

# 2026 REQUEST FOR QUALIFICATIONS

**RFQP No. 26-02-01**  
**Bakersfield City School District**  
**Facility Master Planning Services**

**Prepared By:**



**integrated designs**  
by SOMAM, Inc.

**Due Date: March 6th 2026 2:00pm**  
**# OF PAGES: 32**

# TABLE OF CONTENTS

COVER	
TABLE OF CONTENTS	1
COVER LETTER	1
BUSINESS INFORMATION	4
PROJECT APPROACH AND FIRM QUALIFICATIONS	7
RELEVANT EXPERIENCE AND REFERENCES	6
TEAM SUMMARY AND QUALIFICATIONS	9
LITIGATION HISTORY	1
FEES	2



**MARK T. OBA**  
Architect

**SHARON E. ASHIDA, CID**  
Interior Designer

**CURTIS FLYNN**  
Architect

**FELIPE CEBALLOS**  
Architect

**CHARLENE HAUGEN**  
Architect

**MARK HAROLD**  
Architect

**LISA LUM, PE**  
Mechanical Engineer

**EFRAIN GAETA**  
Project Coordinator

**SEAN K. PARKER**  
Project Coordinator

**CHRISTINA EHGALI**  
Business Manager

March 4, 2026

Mr. Jason Sutton  
Bakersfield City School District  
1501 Feliz Drive  
Bakersfield, CA 93307

Tab 1 – Cover Letter

Subject: Letter of Introduction

Dear Mr. Sutton,

Integrated Designs by SOMAM, Inc. is pleased to submit our architectural and engineering services for your consideration in response to the Bakersfield City School District Request for Qualifications and Proposals (RFQ/P No. 26-02-10) for the Master Plan Consultant.

We are a licensed architectural/engineering firm located in Fresno, California with over 70 years of experience delivering high-quality services to our educational clients.

Notably, for over 15 years, we have collaborated with your administration to complete not only the Martin Luther King Jr. Elementary School in 2020, but other essential projects throughout your district. We feel privileged to have fostered an enduring partnership with Bakersfield City School District.

We have partnered with various school districts, and County Offices of Educations, to deliver services for their facility master planning needs. We propose collaborating with your consultants to provide the following scope of services:

- Site Plan Inventory – Building Data (Teaching Stations and Ancillary Facilities)
- Cost Estimating
- Final Master Plan Document Collaboration with District Consultants

Curtis Flynn, Project Architect, is the authorized agent to speak on behalf of Integrated Designs during your evaluation process and would like the opportunity to further discuss the Agreement for Architectural Services in Addendum 01.

Integrated Designs by SOMAM, inc. has the extensive experience, a dedicated team, and unwavering commitment to BCSD. We, stand ready to assist the district and your consultants to prepare your Facility Master Plan.

We look forward to the opportunity to discuss how we can assist Bakersfield City School District.

Sincerely,  
Integrated Designs by SOMAM, Inc.

Curtis Flynn, *Vice President/Project Architect*

# BUSINESS INFORMATION

Company Name	Integrated Designs by SOMAM Inc
Firm Address	6011 N Fresno Street, Suite 130, Fresno, CA 93710
Phone No.	(559) 436-0881 Fax: (559) 436-0887
Federal Tax Id #	94-2625576
Main Contact	Curtis Flynn
Email	<a href="mailto:CFlynn@SOMAM.com">CFlynn@SOMAM.com</a>
Website Address	<a href="http://www.integrateddesigns.com">www.integrateddesigns.com</a>
Firm Type	Registered California Corporation

## **INTEGRATED DESIGNS BY SOMAM INC. OPERATES AS AN IN-HOUSE ARCHITECTURAL, ENGINEERING, PROJECT MANAGEMENT AND INTERIOR DESIGN FIRM**

### SHAREHOLDERS AND LICENSES

The following is a list of licensed professionals of the firm. All licenses are current and have not been suspended or revoked at any time.

Sharon Ashida, President	Interior Design No 3140
Mark T. Oba, Vice President	Architect No. C6908
Curtis Flynn, Vice President	Architect No. C28966
Felipe Ceballos, Vice President	Architect No C12834
Charlene Haugen	Architect No. C24041
Mark Harold	Architect No. C10301
Lisa Lum	Mechanical Engineer No. M32712
Scott Dewey	Architect No. C32094

Established in 1956; servicing clients for over 70 years; currently with 21 employees.

Organized with four shareholders, five associates and twelve staff members.

Our experience includes working with over 60 school districts as well as military, corporate, private, city and county entities.

Location of services will be performed at 6011 N. Fresno Street, Suite 130, Fresno, CA 93710

### **SERVICES PROVIDED:**

- Architectural Design
- Interior Design
- Mechanical Design
- Plumbing Design
- Programming
- Project Management
- Project Closeout
- Budget Control
- Bid Evaluation
- Contract Administration
- Cost Estimating
- Value Engineering
- Progress Payment Validation
- OPSC Assistance
- CDE Assistance
- 3D Visualization
- Constructability Review
- Quality Assurance
- Field Inspection

## **INTEGRATED DESIGNS...**

is proud to maintain an excellent track record, having never been involved in any litigation related to school construction projects. This reflects our commitment to delivering high quality work while adhering to all project requirements and maintain strong, positive relationships with our clients and partners.





# PROJECT APPROACH AND FIRM QUALIFICATIONS

For over 70 years, Integrated Designs by SOMAM, Inc. has provided School Districts with professional services on a wide variety of projects that fall into the following categories: master planning, new construction, additions, modernizations, career tech, TK/K, facility hardships, and extreme hardships. Our continued success is largely attributable to continuous communication and team commitment that is established between the design professional and the client's key personnel. Our goal in developing a master plan is to strategize with each client to obtain the **maximum amount of funding from the state.**

## PROPOSED SCOPE OF SERVICES

Integrated Designs will work closely with the district to help analyze the needs and solutions prior to preparing the facilities master plan. Once the scope has been determined the schedule will be determined.

The District to provide:

1. As-built drawings as required for each campus
2. CBEDs for each school
3. Deferred Maintenance Plan & Five-Year Plan

Integrated Designs' proposed scope includes the following:

1. Preparation of the site plan inventory for each school including the following information
  - a. The year each building at the school that is currently used for instruction was constructed and square footage.
  - b. The year each building that is currently used for instruction was modernized, if applicable.
  - c. The pupil capacity of each school.
  - d. The age and number of portables at each school.
  - e. Whether the school has a cafeteria, kitchen, multipurpose or hybrid multipurpose, library, gym or hybrid gym, auditorium/performing arts, athletic facilities, pool, stadium, career tech facilities.
2. Preparation of related estimated construction costs.

The District's consultants' proposed scope includes the following:

1. Determining the school district's eligibility – new construction, modernization, facility hardship
2. Projected enrollment
3. District financing – local, state, other funding sources
4. Determining the District's Assessed Value

## DESIGNING 21<sup>st</sup> CENTURY LEARNING FACILITIES

Designing the 21<sup>st</sup> century learning facilities involves creating flexible, technology-rich environments that leverage data to personalized instruction and media enhanced engagement. The goals are also based upon the needs of each student and will incorporate the following:

1. Architectural and Physical Design (Flexible Spaces)
  - a. Flexible Seating
  - b. Interactive whiteboards, touch-screen walls that allow students to display, share and edit their work.
  - c. Creative Zones (Maker Spaces) for hands-on, project-based learning
  - d. Active Pods – small, quiet, areas for focused, individual work, allowing for both collaborative and solitary activities.
2. Infrastructure for Data and Media
  - a. Robust Connectivity – ensure high-speed, reliable wireless coverage throughout
  - b. Ubiquitous Power – install numerous outlets and charging stations in furniture and walls to support multiple devices
  - c. Equip rooms with data/power outlets to accommodate built-in projectors, cameras for recording presentations.

## **APPROACH TO COST ESTIMATING**

We have extensive experience preparing estimates generated for

- Initial budgetary evaluation
- OPSC funding and application process using their established/approved cost allowances. We have regularly scheduled meetings with the OPSC analysts to maximize supplemental funding.
- Value engineering prior to bid advertisement

Our team of estimators maintains up-to-date information by

- Tracking on-going bid results from past and current projects
- Contact local contractors for pricing
- Referring to latest Saylor and R.S. Means estimating manuals

### Cost Estimating Procedures

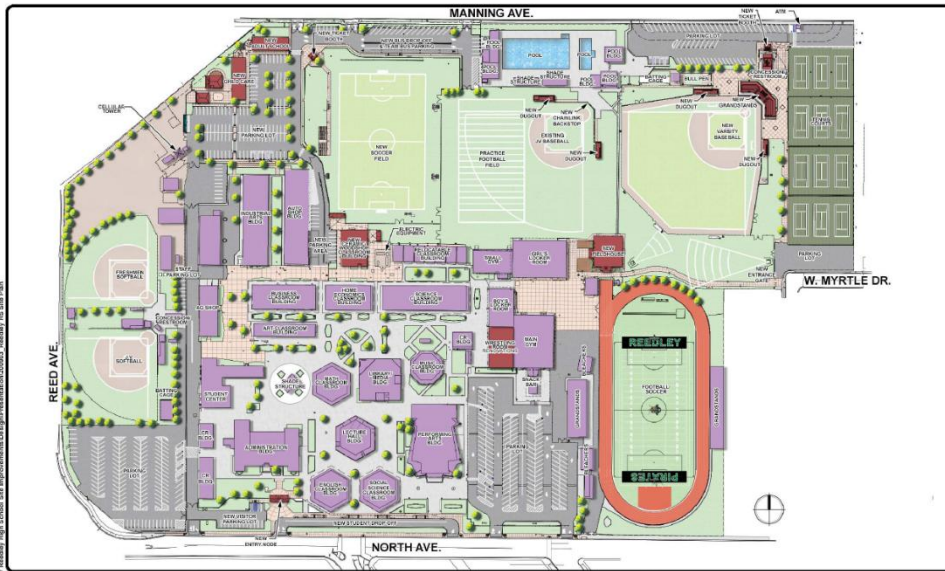
- Itemized take off of projects by the most current estimating software systems allows us to make quick and accurate budget/value cost engineering revisions based on the current construction costs in today's ever-changing market place.
- Itemized take off and Cost estimating programs are used in conjunction with the CAD programs to maintain a realistic and accurate vision of construction costs prior to going to public bid.
- Electronic Cost estimating is performed on projects as they are being designed and developed allowing the Architect to show an estimated cost that relate accurate costs in current time and market climates allowing the owner to see how best to budget their monies to get the most value for the dollar.

- Electronic estimating of Changes and Revisions to drawings allows changes and revisions to be processed in less time which allows for more accurate cost evaluations for the owner without costly time delays.

During the construction phase, we are able to manage and maintain tight control over the base cost of the project and all revisions/changes allowing the owner to have a clear over-all view on a current time line as the project develops

**TWO EXAMPLES OF FACILITY MASTER PLANS:**

**KINGS CANYON UNIFIED SCHOOL DISTRICT  
REEDLEY HIGH SCHOOL MASTER PLAN**



**WASHINGTON UNIFIED SCHOOL DISTRICT  
WASHINGTON UNION HIGH SCHOOL MASTER PLAN**



## **APPROACH TO QUALITY CONTROL / ASSURANCE PROCEDURES**

At Integrated Designs, our approach is straightforward and efficient. During the construction document review by DSA, we swiftly transmit a review set to both the District and each consultant for their comprehensive evaluation. Prior to the final DSA approval, our in-house team conducts rigorous quality control measures, including a constructability review, to ensure compliance with codes, standards and project requirements. This proactive approach minimizes revisions and expedites the certification process, facilitating seamless project delivery and upholding our commitment to excellence.

## **APPROACH TO DSA PERMITTING AND DSA FINAL CERTIFICATION**

We have a proven track record of success in navigating the DSA approval process and working within their guidelines. We have established relationships with the review team when aggressive deadlines need to be satisfied (ie. state funding deadlines).

We also work closely with the closeout staff, facilitating streamlined communications in order to expedite the close out certification processes. Our dedicated team follows each project, maintaining constant communication to ensure compliance with regulatory requirements are satisfied.

## **APPROACH TO COMPLIANCE WITH PROGRAM REQUIREMENTS**

For 70 years, Integrated Designs has provided School Districts with professional services on a wide variety of projects including master planning, new construction, modernizations, career technical educations, joint use, facility hardship, just to name a few. Our continued success to comply with each school district's program requirements is largely attributable to the continuous communication and team commitment that is established between the design professional and the client's key personnel.

Prior to commencing with your project, we will work closely with the district to help analyze the needs and solutions, prepare projected timelines, educational specifications, and to establish the scope and budget. The team will reconvene through multiple phases in order to ensure the master plans satisfy the district's goals and requirements.

Our 70 years of school experience clearly demonstrates our DSA (State)/Federal experience and when necessary, we have satisfied all City of Bakersfield (Local) requirements in order to move your projects forward through the construction phase and close out of each project.

## **USE OF ENERGY SAVING DESIGN**

We are mandated by current DSA energy regulations. DSA mandates a certain amount of energy saving designs in their current code requirements; which all school facilities must now incorporate. Items include higher performing insulation, window glazing, framing, energy efficient HVAC units, etc.

In addition, DSA also evaluates building square footage vs. the addition of solar panels and/or batteries which must be incorporated into each project.

## **APPROACH TO MODERNIZATION PROJECTS vs. NEW CONSTRUCTION PROJECTS**

### **Modernization Approach**

#### **Design Phase**

- Determine the number of eligible teaching stations, nonessential facilities and preliminary state and district funding.
- Request as-built drawings from the District.
- Determine scope of work from Facilities Master Plan – replace finishes, reconfigure space, upgrade utilities, etc. Prepare milestone schedule for SD, DD, CD and construction.
- Meet regularly with KCUSD facilities staff to discuss scope/budget and design alternatives.
- Compare to supplemental funding categories to maximize the state's funding (ie. 50+ year old buildings, fire alarm, handicap upgrades).
- Request asbestos reports and testing if required by the scope of work.
- Prepare schematic floor plans, interior elevations, site plan for KCUSD review & comment.
- Estimate OPSC's project allowance, hard costs and soft costs (if eligible for state funding).
- Assemble KCUSD facilities and plant ops to discuss the project with design team.
- Prepare educational specifications for review and comment. Incorporate KCUSD building standards, furniture and equipment and engineering systems.
- Prepare interior color board and review with facilities staff and school principal for approval.
- Finalize the design package: floor plan, interior and exterior elevations, site plan, specifications and probable construction costs for KCUSD review, comment and approval of scope relative to budget.

#### **Construction Document Phase**

- Prepare plans and specifications (architectural, civil, structural, mechanical, electrical, landscape design and technology systems). Continue regular meetings with facilities staff.
- Schedule progress meetings with KCUSD and engineering consultants 30% and 60% through completion of the construction documents.
- Submit 50% and 90% complete construction documents for facilities and plant ops review.
- Coordinate front end specifications and bidding procedures with KCUSD.

#### **Secure Various Agency Approvals**

- Submit completed construction documents to the Division of the State Architect, Department of Education and local fire marshal.
- If applicable, the construction documents will also be submitted to the respective City or County agency having jurisdiction.

### **New Construction Approach.**

#### **Design Phase**

- Determine unhoused student eligibility and obtain concurrence from OPSC.
- Determine scope of the project
- Should KCUSD wish to reuse plans from one of our previous projects, a tour of the facilities will be scheduled.

- If the construction manager/project manager has been selected, we encourage their input from the design phase.
- Prepare schematic floor plans, interior elevations, site plan for KCUSD review and comment.
- Estimate OPSC's project allowance, hard costs and soft costs.
- Assemble KCUSD CM and engineering representatives to discuss the project.
- Discuss requirements from City, County and utility companies.
- Coordinate CEQA requirements with the Department of Education.
- Prepare educational specifications for review and comment. Incorporate KCUSD building standards, furniture and equipment and engineering systems.
- Finalize the design package: floor plan, interior and exterior elevations, site plan and probably construction cost for KCUSD sign off.

### **Construction Document Phase**

- Prepare plans and specifications (architectural, civil, structural, mechanical, electrical, landscape design and technology systems). Incorporate CM input.
- Schedule progress meetings with KCUSD and engineering consultants 30% and 60% through completion of the construction documents.
- Coordinate front end specifications with KCUSD.

### **Secure Various Agency Approvals**

- Submit completed construction documents to the Division of the State Architect, Department of Education and local fire marshal.

If applicable, the construction documents will also be submitted to the respective City or County agency having jurisdiction

## **FLEXIBILITY TO ADAPTING TO THE CHANGING NEEDS AND PRIORITIES OF A TK-MIDDLE SCHOOL/JUNIOR HIGH SCHOOL DISTRICT**

The demand for educational space constantly changes, and buildings should evolve along with those programs. By anticipating the design of our school buildings, we can ensure they have the capacity and quality to support our students' no matter what grade level will be assigned to accommodate their respective diverse and dynamic needs.

One option is to incorporate 1,200 square foot TK/K classrooms that can be converted into middle school labs that also require 1,200 square feet within the campus. Incorporating modular cabinetry, abundant power and data throughout classroom will ensure a flexible teaching environment.

## **EXPERIENCE WORKING WITH DSA AND WORKING WITHIN THE DSA PROCESSES.**

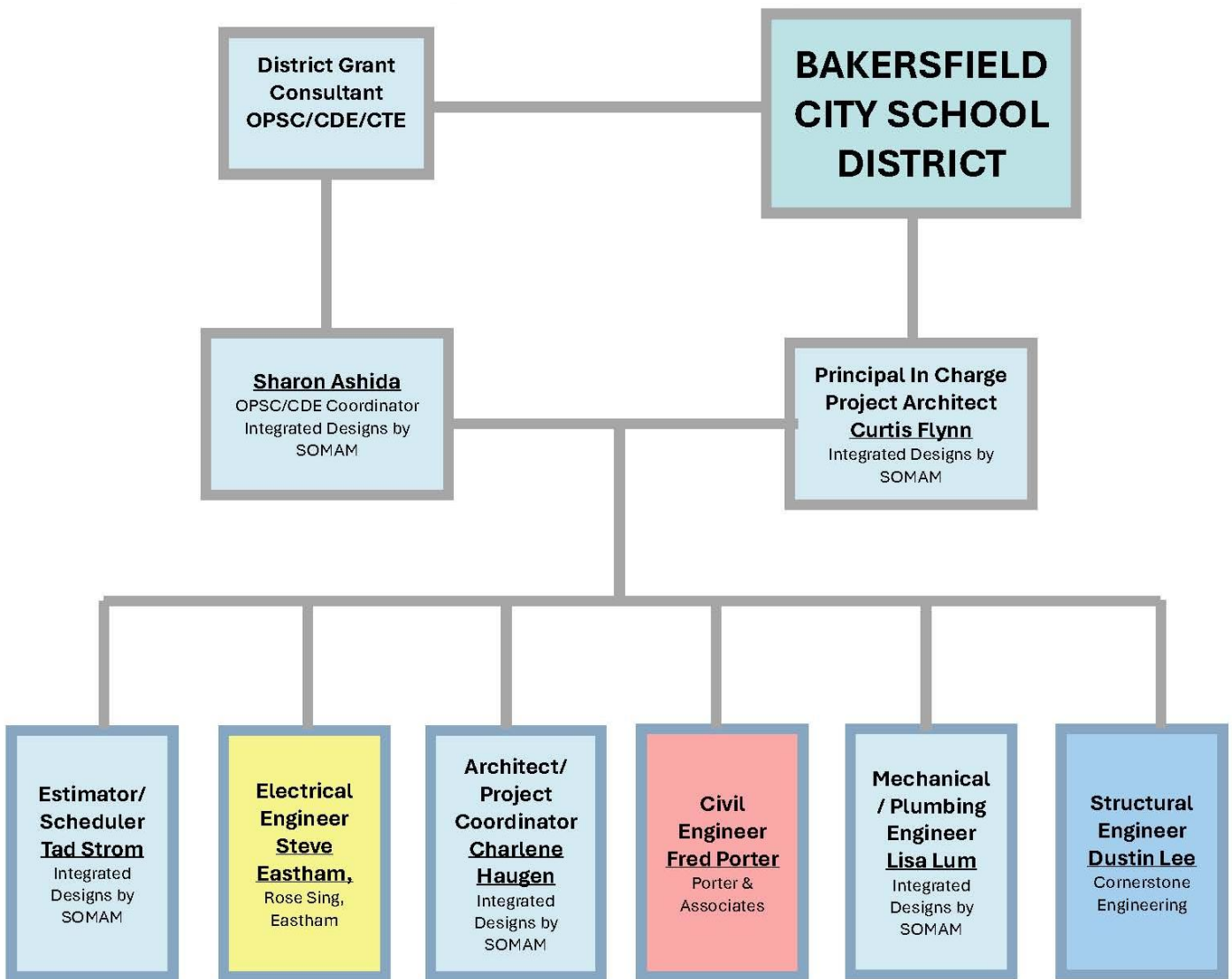
We have extensive experience working with the administration and staff at DSA in order to keep your projects moving forward. The key supervisors and Regional Manager are available and willing to assist when reviews need to be expedited due to funding deadlines and other special requests.

We are also very familiar with the complicated processes and forms that need to be submitted in order to move your projects from initial submission to close out.

## METHODS TO SUCCESSFULLY MEET COMPLETION DEADLINES

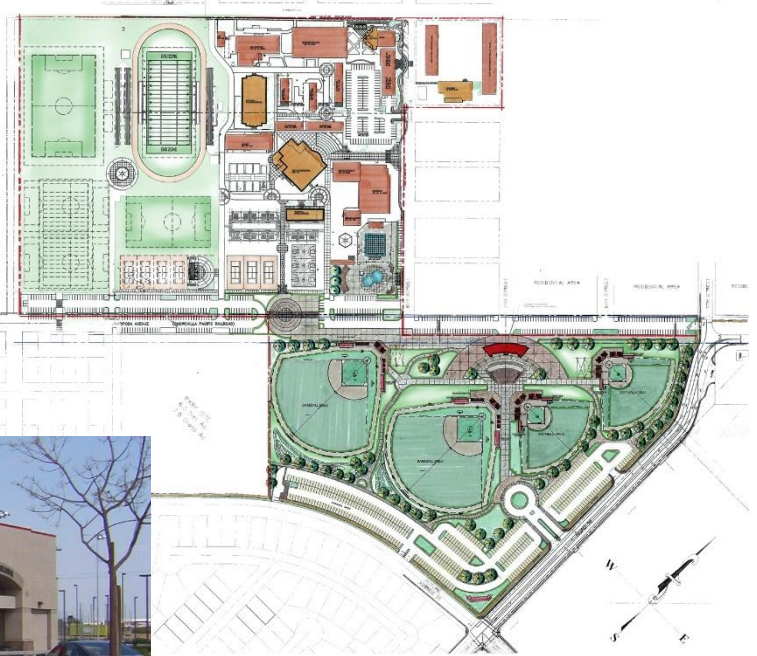
At Integrated Designs by SOMAM Inc., we recognize the critical importance of meeting aggressive completion schedules to align with our clients' needs and project timelines. Our firm has a proven track record of successfully developing and executing ambitious schedules tailored to meet the specific requirements of each project, including those dictated by the district. We approach aggressive completion schedule with a proactive mindset, employing strategic planning, resource allocation, and efficient project management techniques to optimize workflow and ensure timely delivery. Through effective communication, collaboration, and a relentless commitment to excellence, we consistently exceed expectations in meeting aggressive completion schedules. Our experience demonstrates our ability to thrive under pressure while maintaining the highest standards of quality and professionalism.

## SUBCONSULTANTS ANTICIPATED TO BE USED FOR THE MASTERPLAN SERVICES



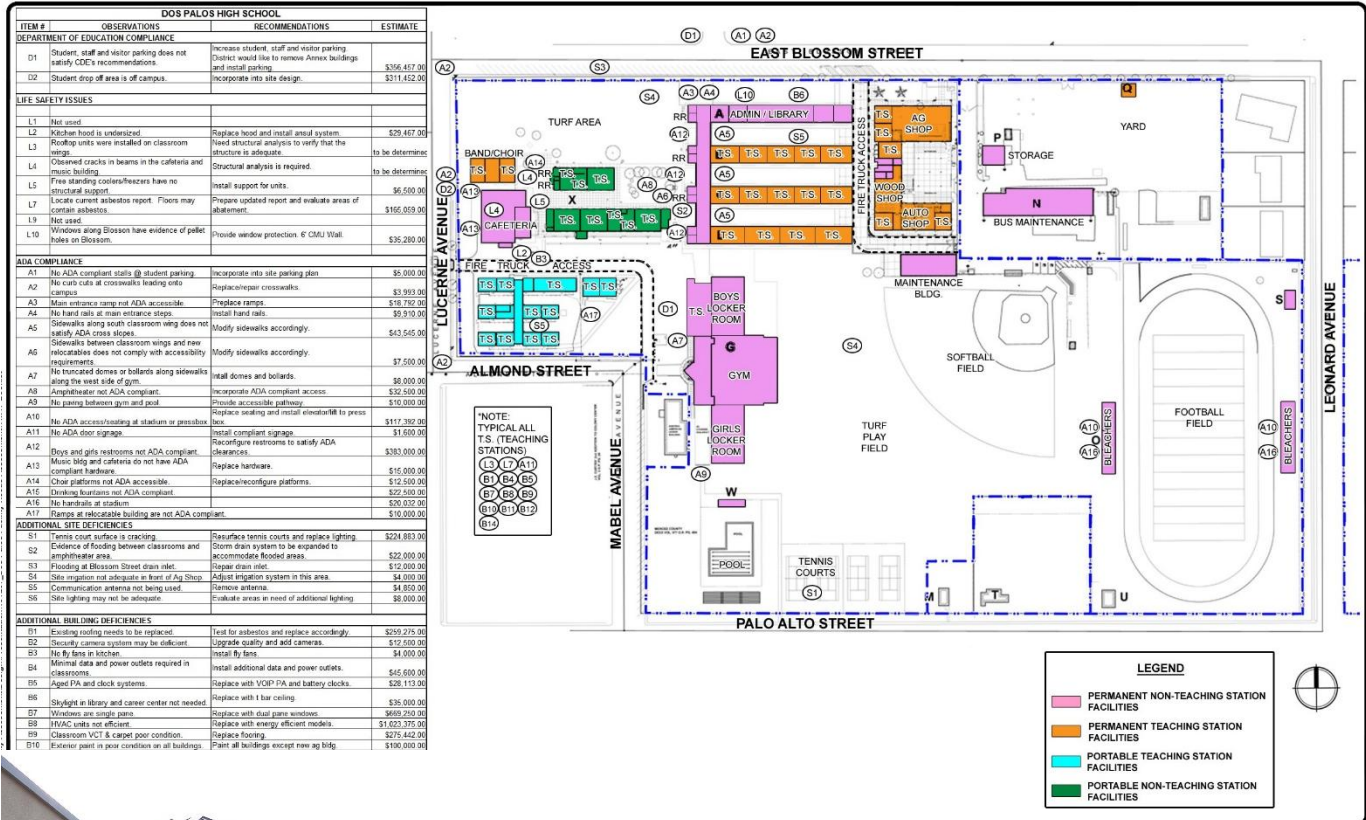
# RELEVANT PROJECT EXPERIENCE

## CHOWCHILLA UNION HIGH SCHOOL DISTRICT MASTER PLAN



# RELEVANT PROJECT EXPERIENCE

## DOS PALOS ORO LOMA JUSD MASTER PLAN



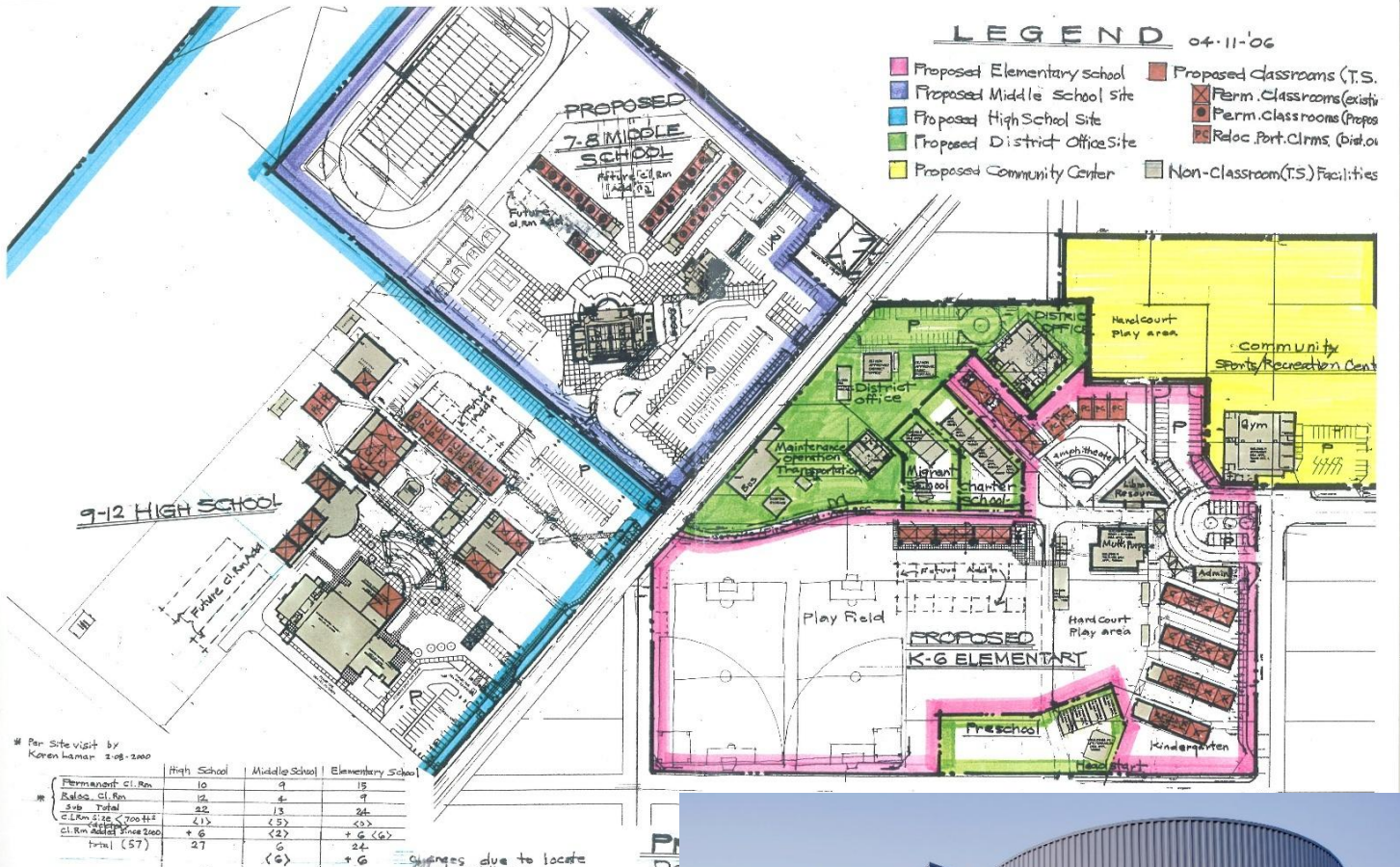
# RELEVANT PROJECT EXPERIENCE

## KINGSBURG JOINT UNION HIGH SCHOOL DISTRICT



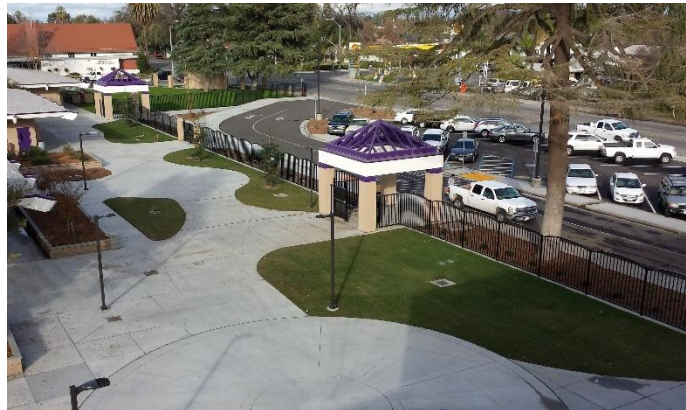
# RELEVANT PROJECT EXPERIENCE

## DENAIR UNIFEID SCHOOL DISTRICT MASTER PLAN



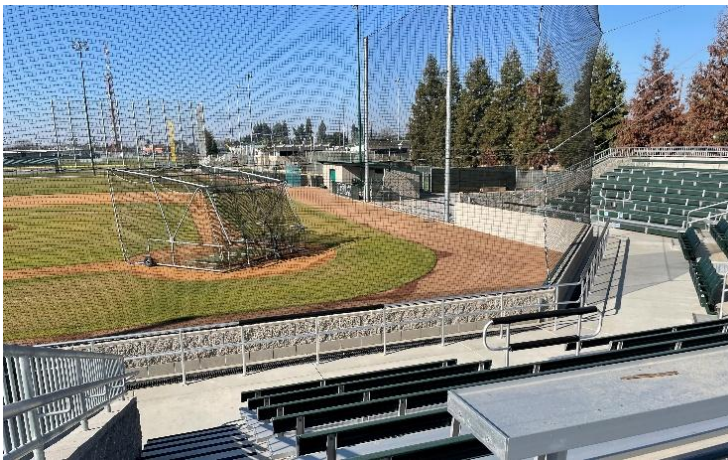
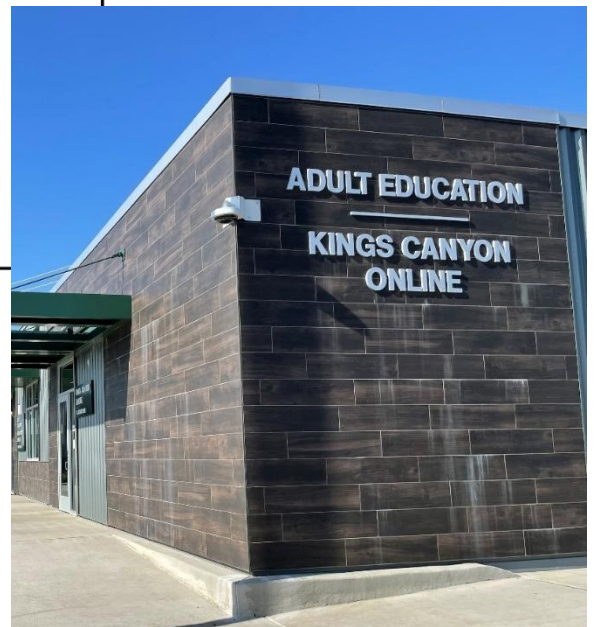
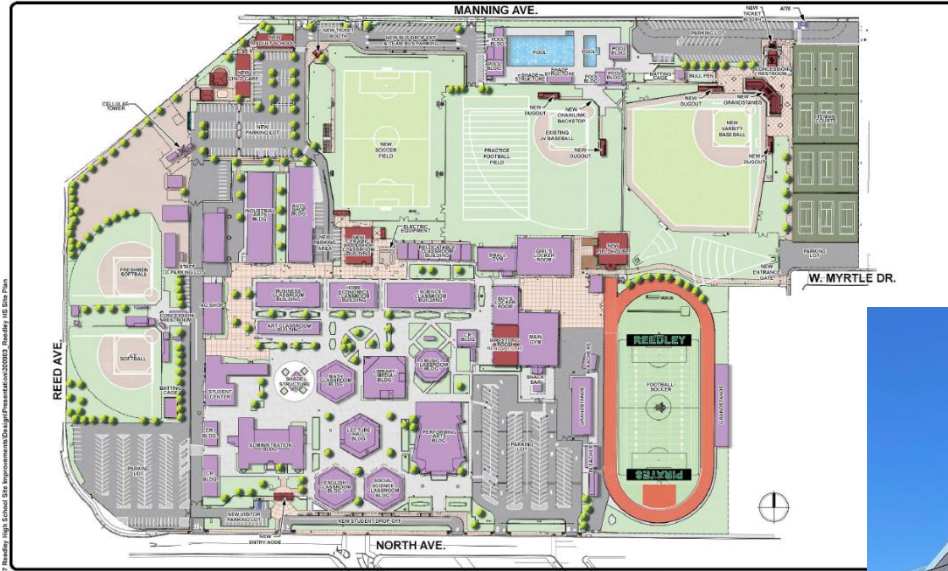
# RELEVANT PROJECT EXPERIENCE

## WASHINGTON UNIFIED SCHOOL DISTRICT WASHINGTON UNION HIGH SCHOOL



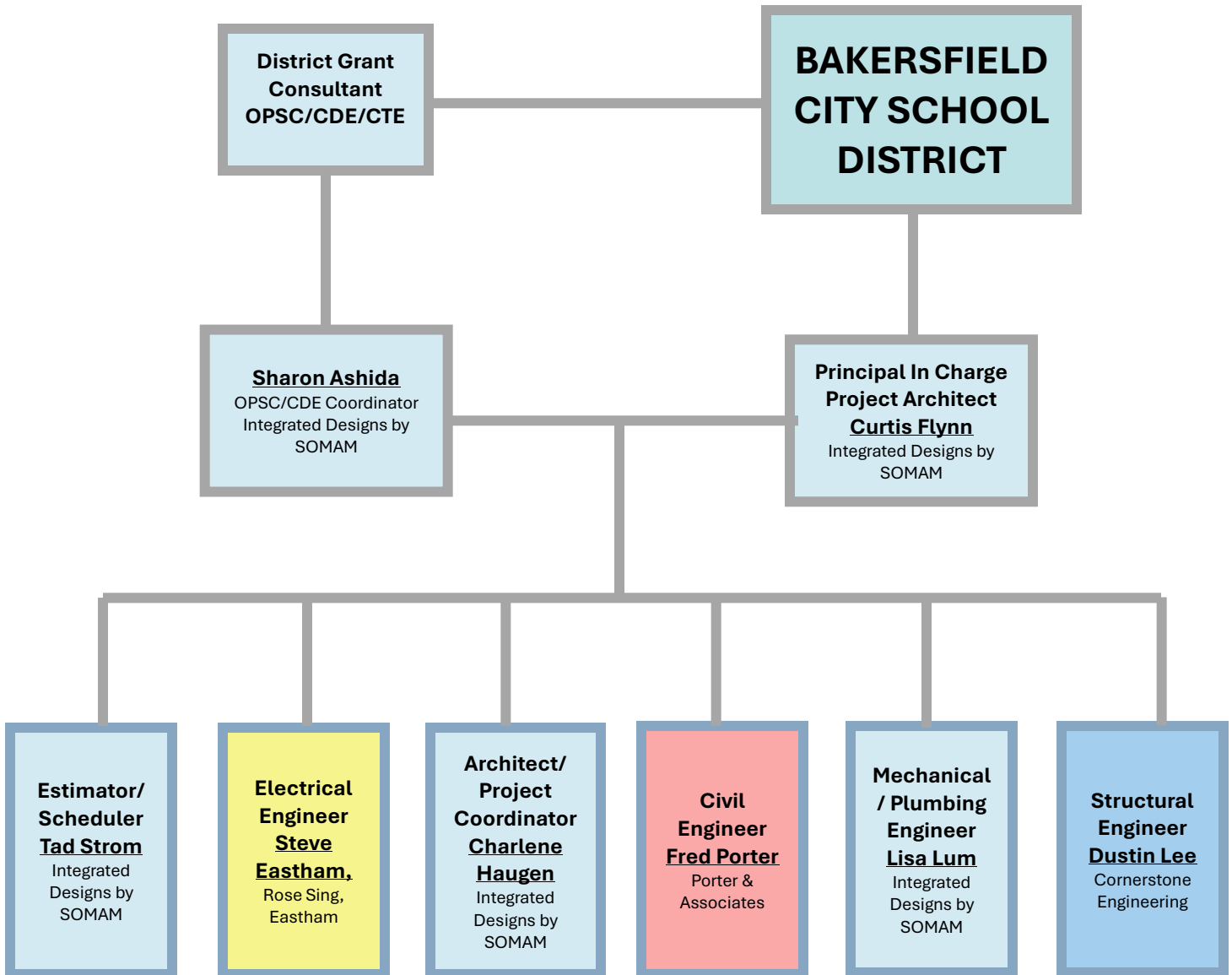
# RELEVANT PROJECT EXPERIENCE

## KINGS CANYON UNIFIED SCHOOL DISTRICT REEDLEY HIGH SCHOOL MASTER PLAN



# TEAM SUMMARY AND QUALIFICATIONS

Integrated Designs by SOMAM, inc. offers in-house design, architectural, civil, mechanical and plumbing engineering, and construction contract administration. We have worked with many firms and will consult with Fresno County Superintendent of Schools prior to the final selections.



# TEAM SUMMARY AND QUALIFICATIONS

## SHARON ASHIDA

President

**Function:** Direct Grant Consultant  
**Years with Firm:** 40  
**Prior Experience on Public School Projects:** YES

### Related Experience

---

Ms. Ashida joined Integrated Designs in 1984 as an Electrical Designer and is now filling the role as a Project Manager. She provides the coordination necessary between the Project Architect and the Client to keep projects moving forward from design through construction. If required, Ms. Ashida has also assisted clients with their lighting, interior design and color coordination for their respective educational, governmental, commercial and industrial projects.

Past projects in which interior design and/or project management services were provided include:

- Convention Center & Visitors Center Exhibit Hall
- Fresno County Law Library Remodel and ADA Accommodations
- McClatchy Newspaper Printing Center Expansion
- Fresno City College Allied Health Building and Library Addition
- Fresno Air National Guard Building Additions
- Cesar Chavez Adult Education Center
- Union Bank of California – branches throughout California
- Chawanakee Unified School District – Hillside Elementary School
- Washington Unified School District – Washington Union High School, West Fresno Elementary Additions and Modernizations
- Fowler Unified School District – Fowler High School, Marshall Elementary, Malaga Elementary, Fremont Elementary Additions and Modernizations

# TEAM SUMMARY AND QUALIFICATIONS

## CURTIS FLYNN

Principal In Charge

**Function:** Project Architect  
**Years with Firm:** 26  
**Prior Experience on Public School Projects:** YES

### Related Experience

---

Mr Flynn, a valued member of Integrated Designs since 1998, has consistently collaborated closely with district personal, particularly concerning educational facilities encompassing additions, modernizations, and the establishment of new campuses. Presented below are sample projects reflective of his expertise:

#### **Bakersfield City School District**

- Martin Luther King Jr. Elem School Campus
- Mt. Vernon Elem School Kitchen Addition
- Frank West Elem School Kitchen Addition
- Wayside Elem School Additions
- Evergreen Elem School Additions
- Munsey Elem School Additions
- Fremont Magnet Elem Relocatable Classrooms
- College Heights Elem Relocatable Classrooms

#### **Chawanee Unified School District**

- New Hillside Elem School

#### **Fresno Unified School District**

- Calwa and King Elem School Portables
- Pyle Elem School Portables
- Bullard Talent K-8 Site Security Improvements
- Viking Elem School Portables
- Cambridge High School Portables
- Computech Middle School Site Security and 2 Relocatable Classrooms
- Jackson Elem School Multi-Purpose Building
- Kratt Elem School Storage to Restom Alt
- Bullard High Building
- Ayer Elem School 2 Portable Classrooms
- Aynesworth Elem School 2 Portable Classrooms

#### **Kings Canyon Unified School District**

- Reedley Middle College High School
- Orange Cover High School Stadium
- Silas Bartsch Elem School
- TL Reed Elem School
- Citrus Middle School
- Reedley High School Library
- Grant Middle School Gym
- District Office Facilities
- Central Valley Transportation Center

#### **Dos Palos Oro Loma Jt Unified School District**

- Dos Palos High School Swimming Pool Complex
- Modernization at 5 Campuses
- Extreme Hardship High School Gym Addition

#### **Merced City School District**

- Chenoweth Elem School Modernization, Multi-Purpose Building and Classroom Addition
- Tenaya Middle School Modernization, Multi-Purpose Building and Classroom Addition & Music Complex
- Franklin Elem School Modernization
- Muir Elem School Modernization
- Fremont Elem School Modernization
- Givens Elem School Modernization
- Burbank Elem School Modernization

#### **Kern County Superintendent of School**

- Kern County SOS Aurora Learning Center
- Kern County SOS Chase Building TI
- Kern County SOS Access Center TI
- Kern County SOS City Center



# TEAM SUMMARY AND QUALIFICATIONS

## TAD STROM

Estimator/Contract Administrator

**Function:** Project Coordinator  
**Years with Firm:** 10  
**Prior Experience on Public School Projects:** YES

### Related Experience

---

Tad Strom has worked with Integrated Designs for over 17 years as an estimator and contract administrator. He has the experience both in the office with estimation, with the on-going construction documents and on-site construction experience to promptly and accurately resolve any issues that should arise during construction.

Tad works very closely with various school district staff and contractors to make sure school projects are completed per the specifications.

His experience in Estimation and Contract Administration include:

#### **Merced County Office of Education**

- Los Banos Valley Community School
- Merced Calley Community School Additions
- Delhi Special Education
- Miano Special Education

#### **Coarsegold Union Elementary School District**

- Multi-purpose Joint Use Addition
- Classroom Additions
- Modernization

#### **Bass Lake Jt Elementary School District**

- Oakhurst Elementary Joint Use Multi Purpose
- Oakhurst Elementary School Modernization
- Wasuma Elementary School Modernization
- Oak Creek Intermediate Multi Purpose Addition

#### **Dos Palos Oro Loma Jt Unified School District**

- Extreme Hardship High School Gym Addition
- Modernizations at 5 campuses
- Swimming Pool Complex

#### **Yosemite Union High School District**

- Music Building Addition
- Twenty Three Classroom Addition
- Swimming Pool Complex
- Performing Arts Complex
- Modernization

#### **Madera County Office of Education**

- Oak Creek Intermediate Special Ed
- Chowchilla High School

#### **Columbia Union School District**

- 19 Classroom Addition
- Joint Use Gymnasium

# TEAM SUMMARY AND QUALIFICATIONS

## STEVE EASTHAM

ELECTRICAL ENGINEER

**Function:** Electrical Engineer Consultant

**Prior Experience on Public School Projects:** YES

### Related Experience

---

Mr. Eastham obtained his Bachelors of Science in Electrical Engineering from the University of the Pacific located in Stockton, CA. Mr. Eastham pursued engineering in the industrial setting of Frito-Lay in Modesto, CA, directly out of college, where he managed numerous plant capital improvement projects. Upon returning to the southern central valley, Mr. Eastham began working for an electrical engineering consulting firm specializing in new and remodel construction throughout the state of California, with an emphasis on Airport Facility projects. During this time, Mr. Eastham gained invaluable experience in the design, bidding, procurement, and construction industry. Lastly, Mr. Eastham worked as the engineering manager for Guardian Glass, an industrial manufacturer of flat glass, where Mr. Eastham managed a team of engineers to improve and maintain the efficiency throughout the facility. Mr. Eastham holds a professional engineering license from the State of California and has provided electrical designs for a number of different industries including airports, healthcare facilities, school districts, religious facilities, public parks, lift stations, solar (residential and commercial), industrial, business offices, and residential homes. Mr. Eastham is intimately familiar with the code compliant issues and jurisdictions governing the proper design and construction of these varied projects.

### Experiences

President of Rose • Sing • Eastham & Associates	4 yrs.
President of Eastham Engineering, Inc.	8 yrs.
Engineering Manager Guardian Glass	3 yrs.
Electrical Engineer for Gurcinas & Associates	7 yrs.
Project Engineer for Frito-Lay, Inc.	4 yrs.

### Membership & Certificates:

Registered Professional Engineer - California #E-18786  
Registered Professional Engineer – Idaho #18682  
Illuminating Engineering Society of North America  
National Fire Protection Agency



**integrated designs**  
by SOMAM, Inc.

# TEAM SUMMARY AND QUALIFICATIONS

## Charlene Haugen

Architect

**Function:** Project Coordinator  
**Years with Firm:** 10  
**Prior Experience on Public School Projects:** YES

### Related Experience

---

Charlene, a member of Integrated Designs since 2016, brings a wealth of experience in architectural designs, project coordination and contract administration across diverse sectors, including both private and public domains.

The projects she has contributed to are outlined below:

#### **Bakersfield City School District – Martin Luther King Jr. Elementary School**

#### **Fresno Unified School District – Jackson Elementary School**

- New Multipurpose Building
- Interim Dining Facilities

#### **Kings Canyon Unified School District – Reedley High School Additions Phases I & II**

- Woodshop/Ceramics Building & Café
- Adult Education 7 Childcare Center
- Field House
- Baseball & Soccer Complex Improvements
- Reedley High School Additions

#### **Fresno Convention Center**

- Selland Arena
- Saroyan Theatre
- Valdez Hall

#### **Manchester Center Exterior Renovation, Fresno, CA – Phase II-V**

# TEAM SUMMARY AND QUALIFICATIONS

**FRED W. PORTER II,**  
Civil Engineer

**Project Assignment:**  
**Professional Registration:**  
**Education:**

**Company:**

Related Experience

---

Mr. Porter has over 40 years of experience in the area of land planning, improvement plan development, architectural engineering, structural engineering, sewer treatment facilities, water pumping facilities, surveying, traffic studies, air quality reports, environmental documents, and project management. He has worked on numerous projects for Kern County, Bakersfield, and surrounding areas, including the following:

Martin Luther King Jr. New Wellness Center, Bakersfield  
Martin Luther King Jr. New Parent Center, Bakersfield  
Dr. Martin Luther King Jr. Elementary School new Campus  
Kern County Superintendent of Schools Service Center Retaining Wall  
Kern High School District Support Facilities Expansion  
Aurora Program School New Campus

# TEAM SUMMARY AND QUALIFICATIONS

## **Lisa Lum**

P.E., LEED Accredited Professional

**Function:** Plumbing Engineer Consultant  
**Years with Firm:** 15  
**Prior Experience on Public School Projects:** YES

### Related Experience

---

Lisa became a part of Integrated Designs in 2011. Throughout her tenure, she has fostered close collaborations with district personnel, particularly in the realm of educational facilities, additions, modernizations, and the establishment of new campuses.

Presented below are sample projects indicative of her contributions:

- Frank West Elementary School Kitchen Dry Storage Addition – Bakersfield City School District
- Mt. Vernon Elementary School Kitchen Dry Storage Addition – Bakersfield City School District
- Hillside Elementary School – New Campus – Chawankee Unified School District
- West Fresno Elementary School Administration Remodel and Addition – Washington Unified School District
- Washington Union High School Modernization and Football Stadium, Washington Unified School District
- Raisin City Elementary School Event Center, Modernization and Football Stadium – Raisin City Unified School District
- Ducor Union Elementary School Multi-Purpose Building – Fresno Unified School District
- Bullard High School Building V – Fresno Unified School District
- Reedley Middle College High School, New Campus – Kings Canyon Unified School District
- Computech Middle School Site Security and 2 Relocatable Classrooms – Fresno Unified School District
- Kratt Elementary School Storage to Restroom Alteration – Fresno Unified School District
- Viking Elementary School Portables – Fresno Unified School District
- King Elementary School Portables – Fresno Unified School District
- Pyle Elementary School Portables – Fresno Unified School District
- Cambridge High School Portables – Fresno Unified School District

# TEAM SUMMARY AND QUALIFICATIONS

## DUSTIN G. LEE

Senior Engineer

<b>Project Assignment:</b>	Structural Engineer
<b>Professional Registration:</b>	California Structural License Registration No. S6623
<b>Education:</b>	Bachelor of Civil Engineering California Polytechnic State Univ, Berkeley
<b>Company:</b>	Cornerstone Structural Engineering Group 986 W. Alluvial Ave, Ste 201 Fresno, CA 93711 (559) 320-3200

### Related Experience

---

Mr. Lee has over nine years of professional engineering design and project management experience with Cornerstone Structural Engineering Group and has worked on numerous projects including school kitchen renovation projects, new schools construction and modernization, fire stations, seismic assessments and retrofits, and bridges.

### Project Experience

West Fresno Elementary School Kitchen, Fresno  
Fremont Elementary School Modernization, Fowler  
Jackson Elementary School Multi-Purpose Building, Fresno  
Laton Elementary School Kitchen Equipment Replacement, Laton  
Laton High School Kitchen Equipment Replacement, Laton  
El Nido Elementary School Kitchen & Multi-Purpose Building, Merced  
Reedley High School Baseball Field Complex, Reedley  
Fowler Unified School District Transportation Center, Fowler  
Neutra Elementary School Kindergarten Buildings, Lemoore  
Longfellow Elementary School Exit Balcony, San Francisco  
Lorenzo Manor Elementary School, San Lorenzo  
Los Altos School District Portables Retaining Walls, Los Altos Hills  
Lowell High School, San Francisco  
Marin Horizon Day School, Mill Valley  
Miraloma Elementary School, San Francisco  
Monta Vista School District Site Work, Cupertino  
Monterey High School Science Building, Monterey  
Lemoore Paul Revere Elementary School, San Francisco  
Pittsburg High School Dance Portable Modifications, Pittsburg  
Louis Stevenson Elementary School, San Francisco  
Tule Elk Park Early Education, San Francisco  
U.C. Berkeley Haviland Hall, Berkeley  
UCSC JBEB 287 Lab, Santa Cruz  
Walden School, Berkeley



# LITIGATION HISTORY

Designs by SOMAM, Inc, has never been involved in any litigation. We maintain a steadfast commitment to professionalism and integrity in all our endeavors, providing our clients with reliable and trustworthy services.



# FEES

## (1) Hourly Rates/Time and Material Basis

Principal:	\$185.00/hour
Professional:	\$150.00/hour
Sub-Professional:	\$90.00/hour
Clerical:	\$60.00/hour

### Reimbursable Expenses:

Automobile Travel for DSA Review/Approval at rates allowed by the IRS

Reproduction Costs SOMAM Inc cost-in House Reproduction Costs:

Prints:	\$1.00/sheet
Photocopies:	\$0.08/copy
Colored Photocopies:	\$2.50/copy

Change Order Fees: To be negotiated depending on the source: contractor, owner, or architect and if the value has been added to the project.

## (2) Modernization/Rehabilitation at Existing Sites:

Option "A" Flat fee based on defined scope of work.

Option "B" A reduced fee will be negotiated with the District if:

The scope of work is basically cosmetic (paint, carpet, hardware replacement, etc)

There is minimal structural, mechanical or electrical engineering involved.

The scope of work includes replacement of qualified portable teaching stations.

Option "C" or else, the anticipated fees may be based upon the OPSC Sliding Scale:

First \$500,000	12%
Next \$500,000	11.5%
Next \$1,000,000	11%
Next \$4,000,000	10%
Next \$4,000,000	9%

(3) **New Construction:** Architectural and Engineering fees (A/E Fees) are typically on the summation of the A/E fee for the base grant, additional supplemental grant (site development) and additional services requested by the District.

Fee based on the base grant (to determine the base grant cost, subtract a total eligible site development cost approved by OPSC from the total award for construction contract.)

Option "A" Flat fee based on defined scope of work.

Option "B": Plans will be prepared based on A/E's full services with the fee determined based on the allowable sliding scale development by OPSC.

First \$500,000	12%
Next \$500,000	11.5%
Next \$500,000	11%
Next \$4,000,000	10%
Next \$4,000,000	9%

Option "C": Re-use of plans previously approved by the Division of the State Architect (DSA). A reduction in A/E fee will be negotiated based on the degree of changes and modifications to the DSA approved plans/ The architect is responsible to complying with the current administrative codes and obtaining approval by DSA and the California Department of Education.

<b>Construction Cost</b>	<b>30% Reduction in A/E Fees</b>	<b>20% Reduction in A/E Fees</b>	<b>10% Reduction in A/E fees</b>
First \$500,000	6.3%	7.2%	8.1%
Next \$500,000	5.95%	6.8%	7.65%
Next \$1,000,000	5.6%	6.4%	7.2%
Next \$4,000,000	4.9%	5.6%	6.3%

Allowable modifications within the footprint of the DSA approved plans:

some changes allowed

Arch Floor Plans	Minor changes allowed	Minor changes allowed	Some changes allowed
Elevations	No changes allowed	Minor changes allowed	Some changes allowed
Struct Roof Structure	No changes allowed	No changes allowed	Some changes allowed
Footing Design	Minor changes allowed	Minor changes allowed	Some changes allowed
Mechanical Plans	No changes allowed	Minor changes allowed	Some changes allowed
Plumbing Plans	No changes allowed	Minor changes allowed	Some changes allowed
Elec. Power/Light	No changes allowed	Minor changes allowed	Some changes allowed
Data/Com, Fire Alarm	Minor changes allowed	Minor changes allowed	Some changes allowed

(4) Fee based on Supplemental Grants IE site development: In order to provide the School District with additional grants, the A/E fee is based on an 8% of eligible service site, off site and utility development costs as approved by the OPSC's Plan Review Team and the SAB.