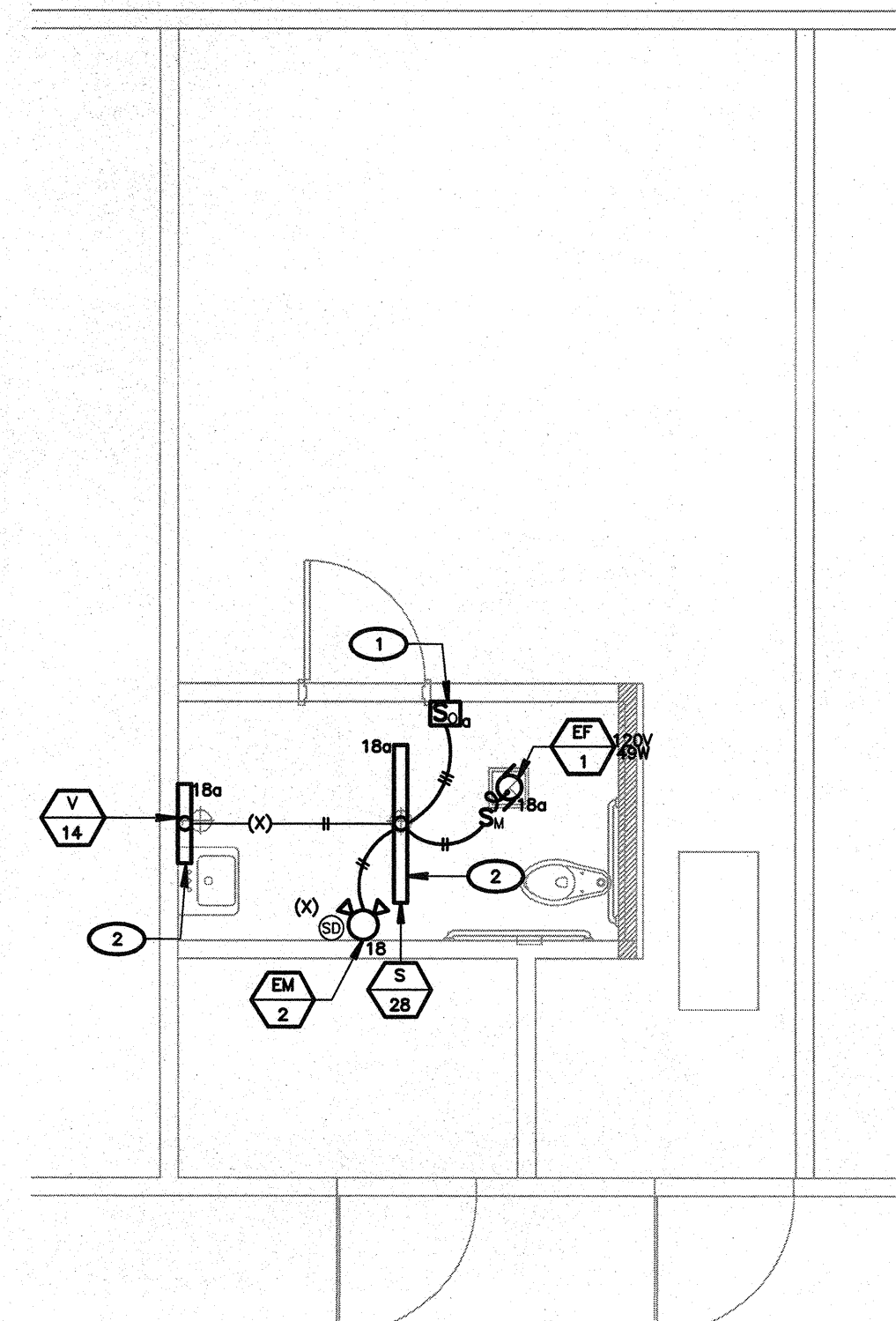
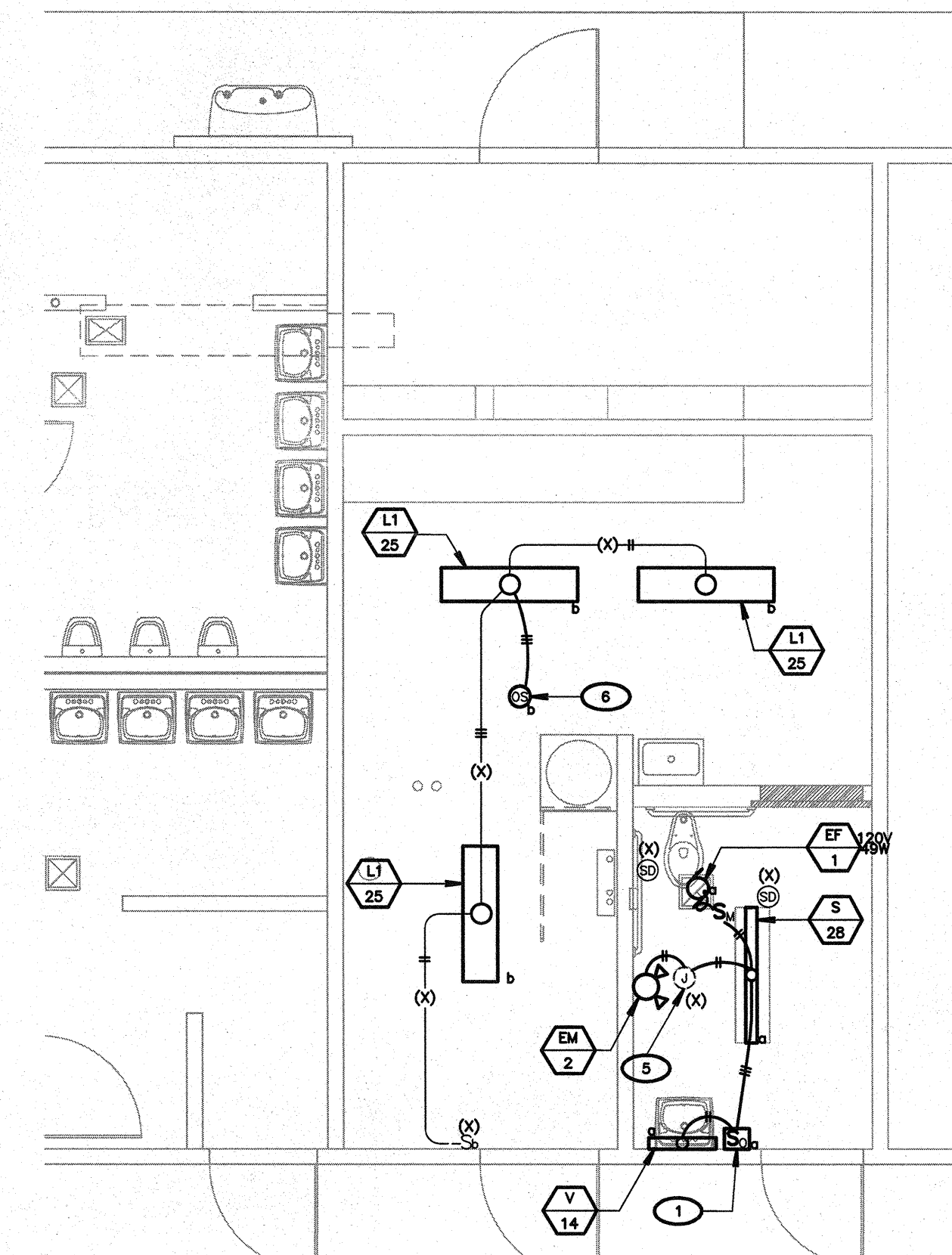


1 LIGHTING PLAN
 BLDG. C, ROOM 108 - BOYS
 BLDG. C, ROOM 109 - GIRLS
 SCALE: 1/4"=1'-0"
 NORTH



2 LIGHTING PLAN
 BLDG. C, ROOM 103 WOMEN
 SCALE: 1/4"=1'-0"
 NORTH

NOTE: CONTRACTOR SHALL PROVIDE ALL NECESSARY WORK & MATERIALS IN ORDER TO PATCH & REPAIR (X) CEILING SYSTEMS AFTER NEW LIGHTING FIXTURES, CEILING SENSORS, & EXHAUST FANS ARE INSTALLED.



3 LIGHTING PLAN
 BLDG. D, ROOM 104 - MEN
 SCALE: 1/4"=1'-0"
 NORTH

LIGHTING SHEET NOTES

- CONTRACTOR SHALL VERIFY LOCATION, CEILING TYPE, TRIM, AND REQUIREMENTS OF ALL LIGHT FIXTURES AND CONTROL PRIOR TO BID PROPOSAL, ROUGH-IN AND FINISH INSTALLATION.
- CONTRACTOR SHALL, IN ROUTING ALL CIRCUITS, INCREASE CONDUCTOR & CONDUIT SIZE TO ALLOW FOR VOLTAGE DROP. SHOULD THE CONTRACTOR EXCEED ROUTING INDICATED ON DRAWINGS, ENGINEER OF RECORD MUST BE NOTIFIED PRIOR TO ANY DEVIATIONS FROM APPROVED PLAN CHECK (PERMIT SET) DRAWINGS.
- CONTRACTOR SHALL FURNISH AND INSTALL PULL BOXES AS REQUIRED TO INSTALL CONDUCTORS PER CONDUIT MANUFACTURERS RECOMMENDATIONS, PER THE NATIONAL ELECTRICAL CODE AND PER LOCAL AUTHORITIES HAVING JURISDICTION.
- 3/4" CONDUIT MINIMUM, UNLESS OTHERWISE NOTED.
- ALL LIGHTING DEVICES SHALL BE SECONDARILY SUPPORTED WITH SAFETY CABLES, PROVIDED BY CONTRACTOR.
- VERIFY LOCATION OF ALL DEVICES ON ARCHITECTURAL PLANS.
- MAINTAIN A MAXIMUM 2% VOLTAGE DROP ON ALL LIGHTING RANGES.
- ALL EXIT SIGNS ARE +12" TO CENTER LINE OF FIXTURE ABOVE DOOR FRAME UNLESS OTHERWISE NOTED.
- CONTRACTOR SHALL PROVIDE ALL BACKING BRACKETS, SUPPORTS AND MOUNTING HARDWARE NECESSARY TO PROPERLY INSTALL LIGHTING FIXTURES.
- VERIFY THE EXACT ROUTING OF ALL EXPOSED CONDUIT WITH OWNER PRIOR TO INSTALLATION.
- COORDINATE WORK WITH OTHER TRADES. OBTAIN ALL DRAWINGS THAT WILL REQUIRE COORDINATION AND PROVIDE ALL ELECTRICAL CONNECTIONS, DEVICES, AND WIRING REQUIRED WHETHER SHOWN ON THE ELECTRICAL DRAWINGS OR NOT.
- PROVIDE CODE SIZED EQUIPMENT GROUNDING CONDUCTOR IN ALL LIGHTING SYSTEM CONDUITS.
- GRAPHICS / SIGNAGE: VERIFY & PROVIDE CONNECTION TO SIGNAGE PER VENDOR'S SHOP DRAWINGS. VERIFY SIGN LOCATION, MOUNTING ELEVATION AND BRANCH CIRCUIT REQUIREMENTS PRIOR TO ROUGH-IN.
- ALL LIGHTING FIXTURES, EXCEPT EMERGENCY, SHALL BE CONTROLLED BY CONTRACTOR PROVIDED AUTOMATIC LIGHTING CONTROL SYSTEM AS REQUIRED BY STATE OF CALIFORNIA TITLE 24 REGULATIONS.
- PROVIDE ALL REQUIRED DEVICE COVER PLATES.

LIGHTING PLAN KEY NOTES
 (NOTE: THESE NOTES MAY NOT APPEAR ON ALL SHEETS)

- PROVIDE ULTRASONIC WALL SWITCH OCCUPANCY SENSOR, #W-100-W, BY WATSTOPPER OR EQUAL. SET FOR MANUAL-ON OPERATION. SET SENSITIVITY TO MAXIMUM & TIME DELAY TO 30 MINUTES. VERIFY COLOR W/ARCHITECT PRIOR TO ORDERING.
- PROVIDE ALL NECESSARY WORK & MATERIALS IN ORDER TO CONNECT NEW LIGHT FIXTURE TO (X) BRANCH CIRCUIT.
- PROVIDE CEILING MOUNT, LINE VOLTAGE, ULTRASONIC OCCUPANCY SENSOR, #UT-255-1, BY WATSTOPPER. PROVIDE COSMETIC ADAPTER, #CA-1. SET SENSITIVITY TO MAXIMUM & TIME DELAY TO 30 MINUTES. VERIFY COLOR W/ARCHITECT PRIOR TO ORDERING.
- LOCATE CEILING MOUNT SENSOR OVER EXISTING CEILING MOUNTED #50V.
- INTERCEPT EXISTING BRANCH CIRCUIT AT EXISTING #50V & EXTEND AS SHOWN. PROVIDE BLANK COUPLER. COORDINATE COLOR W/ARCHITECT.
- PROVIDE CEILING MOUNT, LINE VOLTAGE, ULTRASONIC OCCUPANCY SENSOR, #UT-255-2, BY WATSTOPPER. PROVIDE COSMETIC ADAPTER, #CA-1. SET SENSITIVITY TO MAXIMUM & TIME DELAY TO 30 MINUTES. VERIFY COLOR W/ARCHITECT PRIOR TO ORDERING.

MARK	DATE	REVISIONS
△		
△		
△		

CHECK AND VERIFY ALL DIMENSIONS BEFORE PROCEEDING WITH THE WORK. REPORT DISCREPANCIES TO THE ARCHITECT. ALL CONSTRUCTION SHALL CONFORM TO THE C.B.C.

SITE IMPROVEMENTS FOR MODULAR CLASSROOM
ROOSEVELT ELEMENTARY SCHOOL
 2324 VERDE STREET
 FOR
 BAKERSFIELD CITY SCHOOL DISTRICT
 BAKERSFIELD, KERN COUNTY, CALIFORNIA, 93306

IDENTIFICATION STAMP
 DIV. OF THE STATE ARCHITECT
 OFFICE OF REGULATION SERVICES
 APR. 03-168799
 15-6
 AC: [Signature]
 DATE: 2/12/16
 PTN: 63321-204

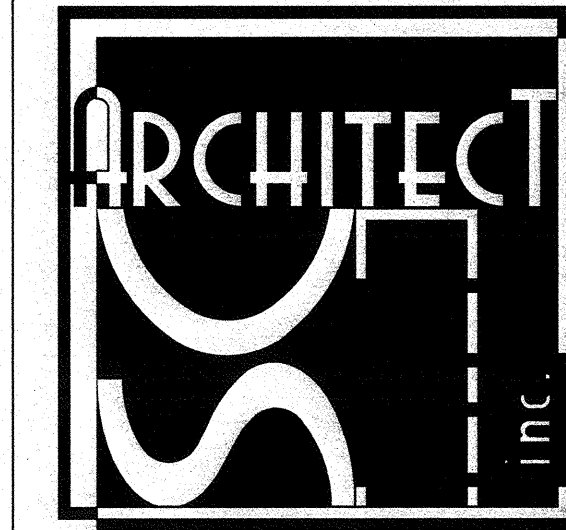
LIGHT FIXTURE SCHEDULE										
WATTS	TYPE	LAMPS		VOLTS		MOUNTING		MANUFACTURER	DESCRIPTION	REMARKS
		No.	TYPE	120	277	REC.	REC.			
L1	LED							LUMINAIRE	CLF7-4-29W-3500K-120-277-CP-XXX-DAMP	1
V	LED							PRUDENTIAL	P40-LED35-MD-2'-2" TMW-SAL-01-SC-LINK-IN-MD	2' LED VANITY 3
S	LED							PRUDENTIAL	P40-LED35-MD-4'-4" TMW-SAL-DT-SC-LINK-SURF-KIND	4' LED SURFACE 1
EM 2	LED							DUAL LITE	EY-4-1-02L	EMERGENCY LIGHT MOUNTED AT 7.5' AFF. 2

- LIGHTING FIXTURE SCHEDULE KEY NOTES**
 (NOTE: THESE NOTES MAY NOT APPEAR ON ALL SHEETS)
- CONTRACTOR SHALL COORDINATE COLOR/FINISH WITH ARCHITECT/OWNER PRIOR TO ORDERING.
 - MOUNT AT 7.5' AFF.
 - MOUNT ABOVE MIRROR ON WALL. CONTRACTOR IS FULLY RESPONSIBLE TO PROVIDE ALL MOUNTING BRACKETS TO FIT CEILING CONDITIONS AT NO EXTRA CHARGE TO THE OWNER.
- FIXTURE SCHEDULE NOTES:**
- CONTRACTOR SHALL BE RESPONSIBLE FOR ORDERING PROPER TYPES OF TRIMS FOR ALL RECESSED FLUORESCENT FIXTURES TO FIT THE CEILING BEING INSTALLED.
 - ALL BALLASTS SHALL BE ELECTRONIC SOLID STATE.
 - FIXTURES TYPE IN CONTACT WITH INSULATION SHALL HAVE ULL LISTED THERMAL BARRIERS.
 - CONTRACTOR SHALL VERIFY THE TYPE OF CEILING BEFORE ORDERING NEW FIXTURES. CONTRACTOR IS FULLY RESPONSIBLE TO PROVIDE ALL MOUNTING BRACKETS TO FIT CEILING CONDITIONS AT NO EXTRA CHARGE TO THE OWNER.
 - REFER TO ARCHITECTURAL REFLECTED CEILING PLAN FOR EXACT LOCATION OF LIGHTING FIXTURES.
 - SEE ARCHITECTURAL PLANS FOR EXACT DIMENSIONS, CEILING CONFIGURATION AND LIGHTING PLACEMENT.



Know what's below.
 Call before you dig.
FERRANTI ENGINEERING
 CONSULTING ELECTRICAL ENGINEERS
 1211 MARICOPA HWY, SUITE 250
 OJAI, CA 93023
 (805) 705-4772
 DALE.FERRANTI@LYVE.COM

PERMIT SUBMITTAL



1601 NEW STINE ROAD, SUITE 280
 BAKERSFIELD, CA 93309
 PH: (661) 397-4377
 FAX: (661) 397-4378
 WWW.SCARCHITECT.COM

REGISTERED ARCHITECT
 STEPHEN J. GARCIA
 No. C-18789
 State of California
 [Signature]
 STEPHEN J. GARCIA, N.CARB, AIA, LEED-AP BD+C

REGISTERED PROFESSIONAL ENGINEER
 DALE FERRANTI
 No. E-17524
 State of California
 [Signature]
 DALE FERRANTI, P.E.

RESTROOM LIGHTING PLANS

JOB NO.

DRAWN:	G.GARCIA
CHECKED:	D.FERRANTI
DATE:	2/12/2016

E
 4.1
 OF SHEETS