

MARK	DATE	REVISIONS
△		
△		
△		

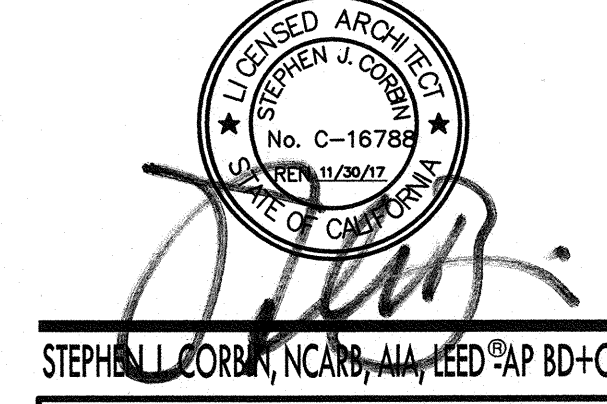
CHECK AND VERIFY ALL DIMENSIONS BEFORE PROCEEDING WITH THE WORK. REPORT DISCREPANCIES TO THE ARCHITECT. ALL CONSTRUCTION SHALL CONFORM TO THE C.B.C.

ROOSEVELT ELEMENTARY SCHOOL
SITE IMPROVEMENTS FOR MODULAR CLASSROOM
 2324 VERDE STREET, BAKERSFIELD, CALIFORNIA
 FOR
 BAKERSFIELD CITY SCHOOL DISTRICT
 BAKERSFIELD, KERN COUNTY, CALIFORNIA, 93304

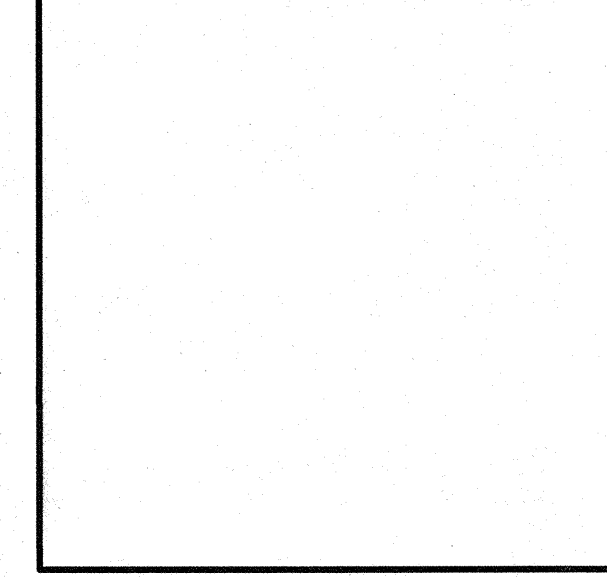
IDENTIFICATION STAMP
 DIV. OF THE STATE ARCHITECT
 OFFICE OF REGULATION SERVICES
 APR. 03 - 110979
 FILE 15-6
 AC: [initials] RLS: [initials] MS: [initials] SS: [initials]
 DATE: 4/13/16
 PTN: 63321-204



1601 NEW STINE ROAD, SUITE 280
 BAKERSFIELD, CA 93309
 PH: (661) 397-4377
 FAX: (661) 397-4378
 WWW.SCARCHITECT.COM



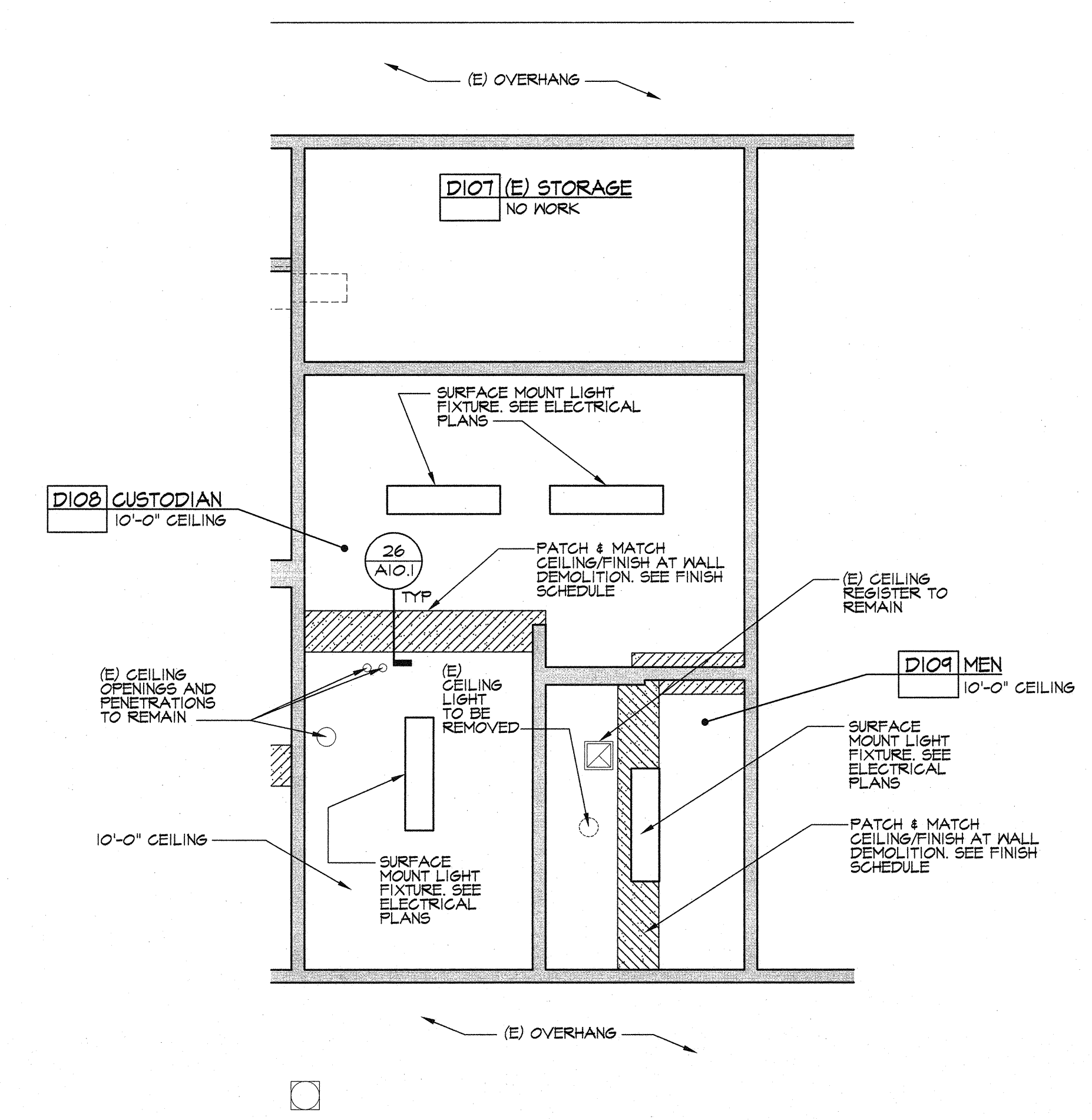
STEPHEN L. CORBIN, N.C.A.S., AIA, LEED® AP BD+C



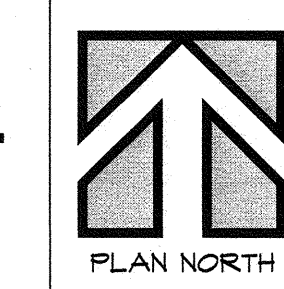
REFLECTED CEILING PARTIAL PLANS

JOB NO.
1216
 DRAWN:
 CHECKED:
 DATE: 4/13/2016

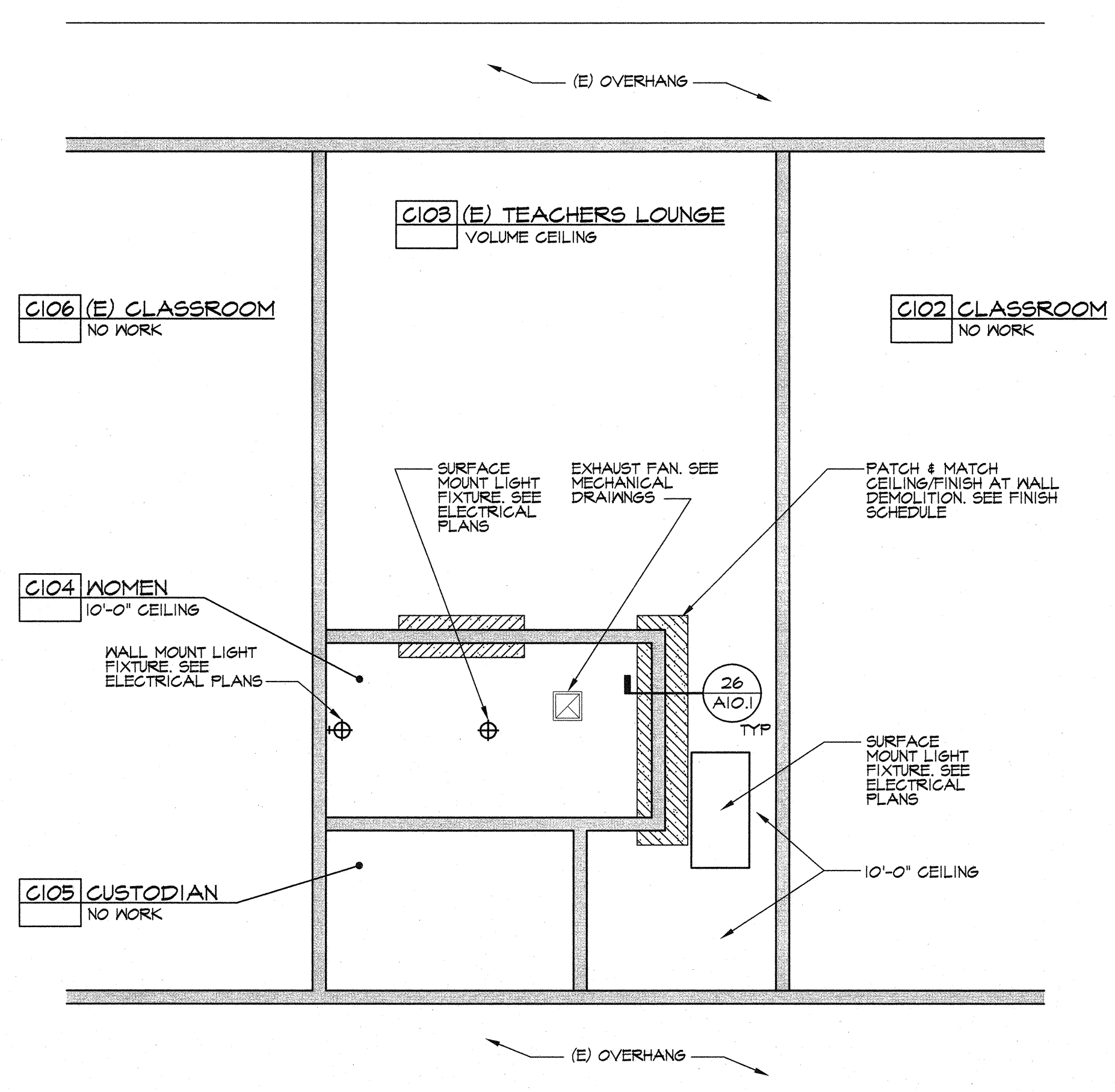
4.0
OF SHEETS



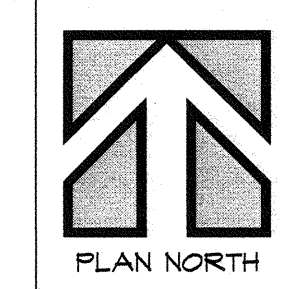
1. PARTIAL REFLECTED CEILING PLAN
BUILDING D, ROOM 109 - MEN
BUILDING D, ROOM 108 - CUSTODIAN



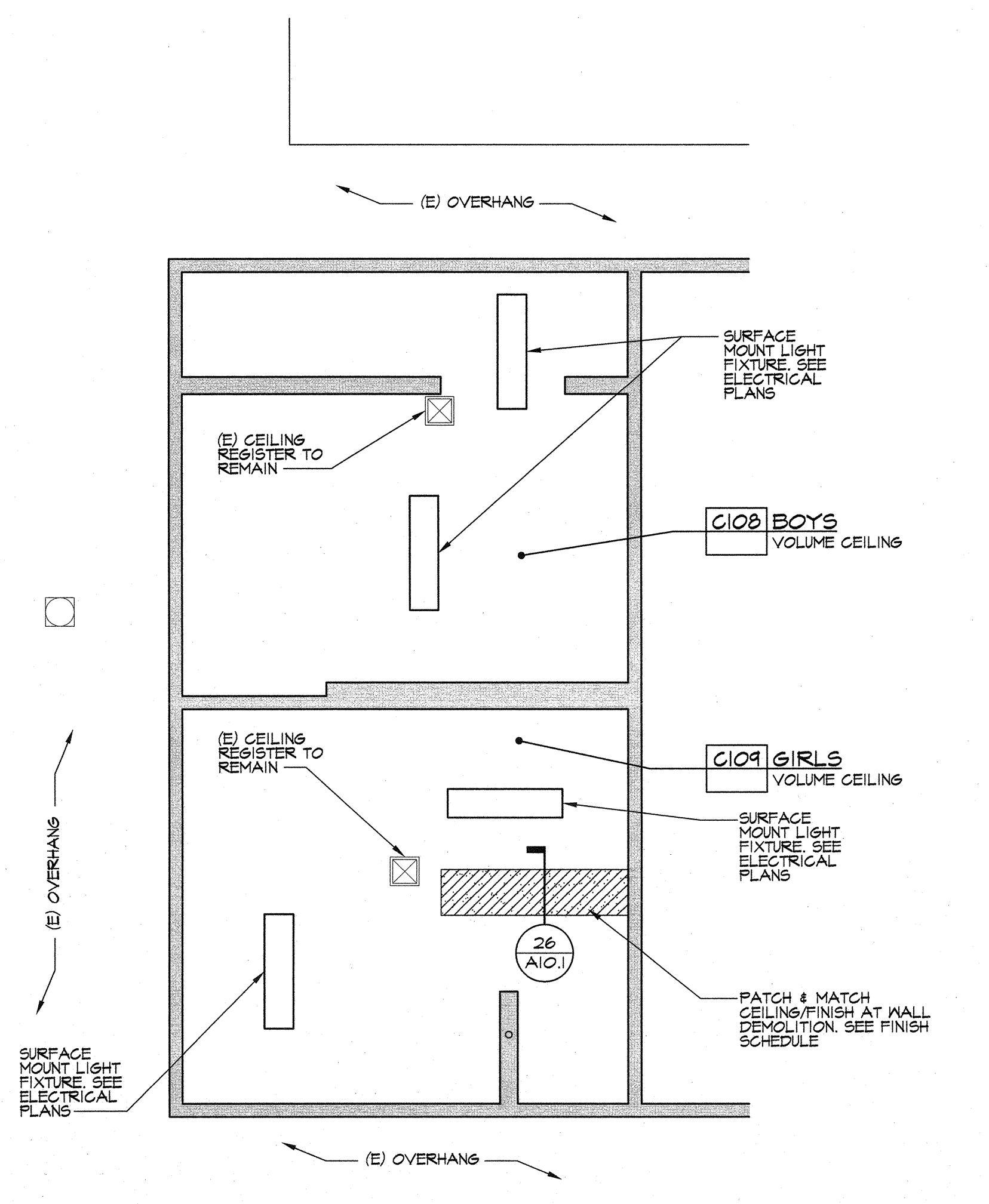
PLAN NORTH



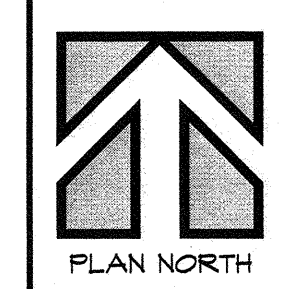
1. PARTIAL REFLECTED CEILING PLAN
BUILDING C, ROOM 104 - WOMEN
BUILDING C, ROOM 103 - TEACHERS LOUNGE



PLAN NORTH



1. PARTIAL REFLECTED CEILING PLAN
BUILDING C, ROOM 108 - BOYS
BUILDING C, ROOM 109 - GIRLS



PLAN NORTH

REFLECTED CEILING PLAN NOTES:

- SEE ROOM FINISH SCHEDULE FOR CEILING FINISHES.
- SEE MECHANICAL AND ELECTRICAL FOR ADDITIONAL INFORMATION.
- HORIZONTAL LATH & PLASTER AT ALL EXTERIOR SOFFITS SEE DETAIL.

REFLECTED CEILING LEGEND

- (E) CEILING REGISTERS - SEE MECHANICAL PLANS
- (E) 1'-0" x 4'-0" RECESSED NTP LIGHT FIXTURE SEE ELECTRICAL PLANS
- (E) 2'-0" x 4'-0" RECESSED NTP LIGHT FIXTURE SEE ELECTRICAL PLANS
- (E) MTD. LIGHT FIXTURE SEE ELECTRICAL PLANS
- 5/8" GYP W/ 1/2" VENEER PLASTER CEILING, UNO