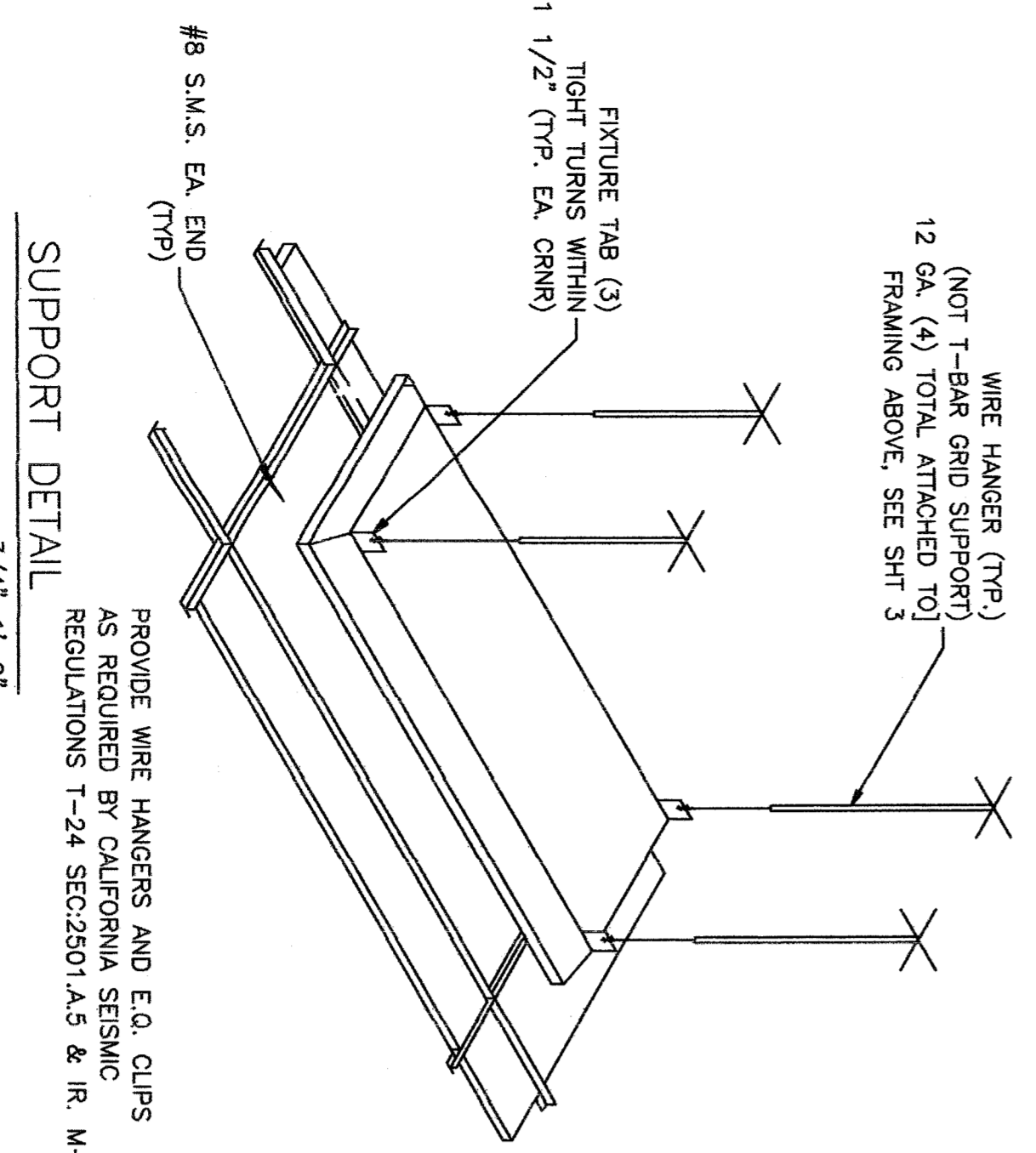
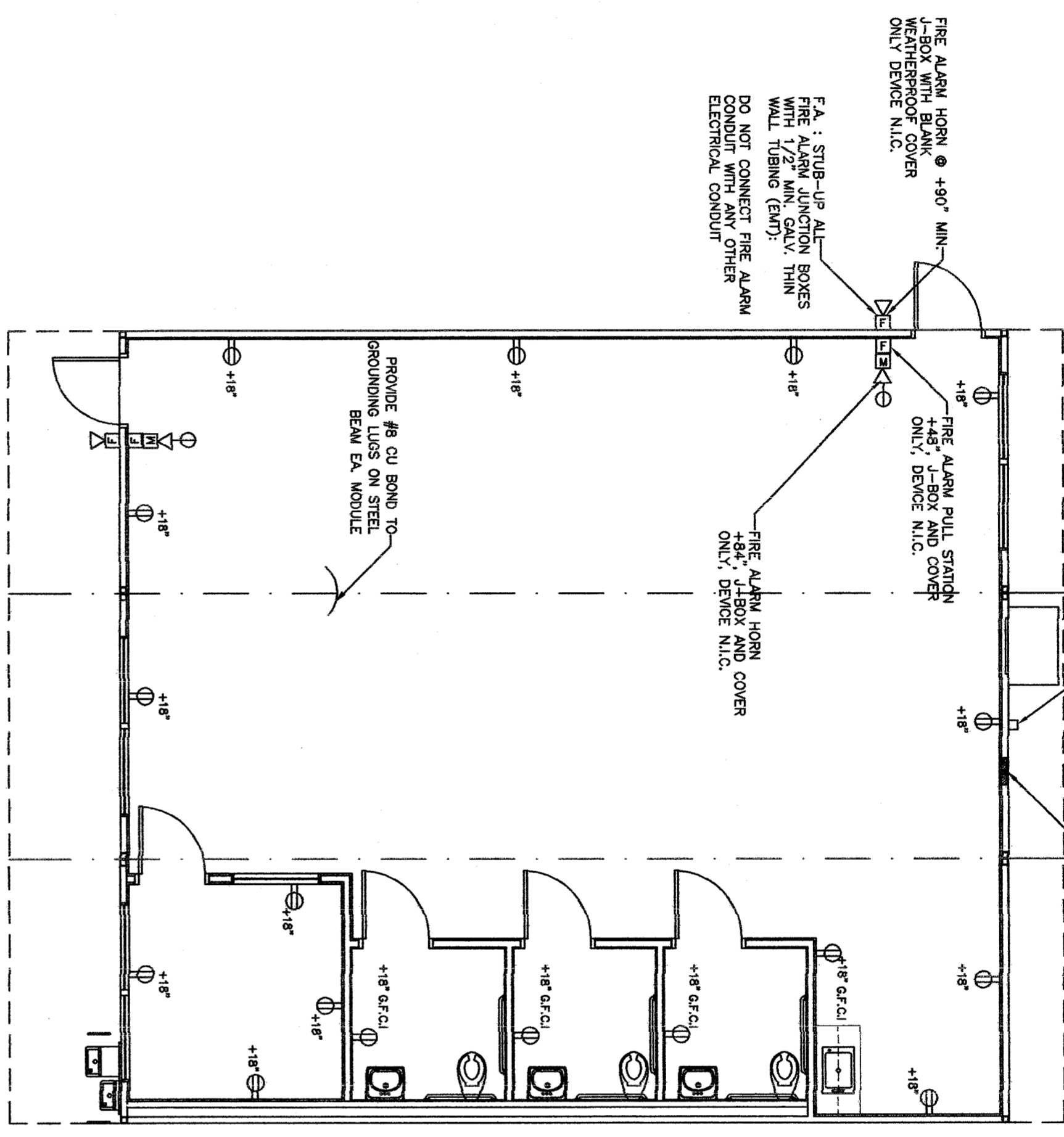


NOTE:
TYPICAL ELECTRICAL
NOTES FOR BOTH
ROOSEVELT AND
EVERGREEN.

1 LIGHT FIXTURES
SCALE: 3/16"=1'-0"

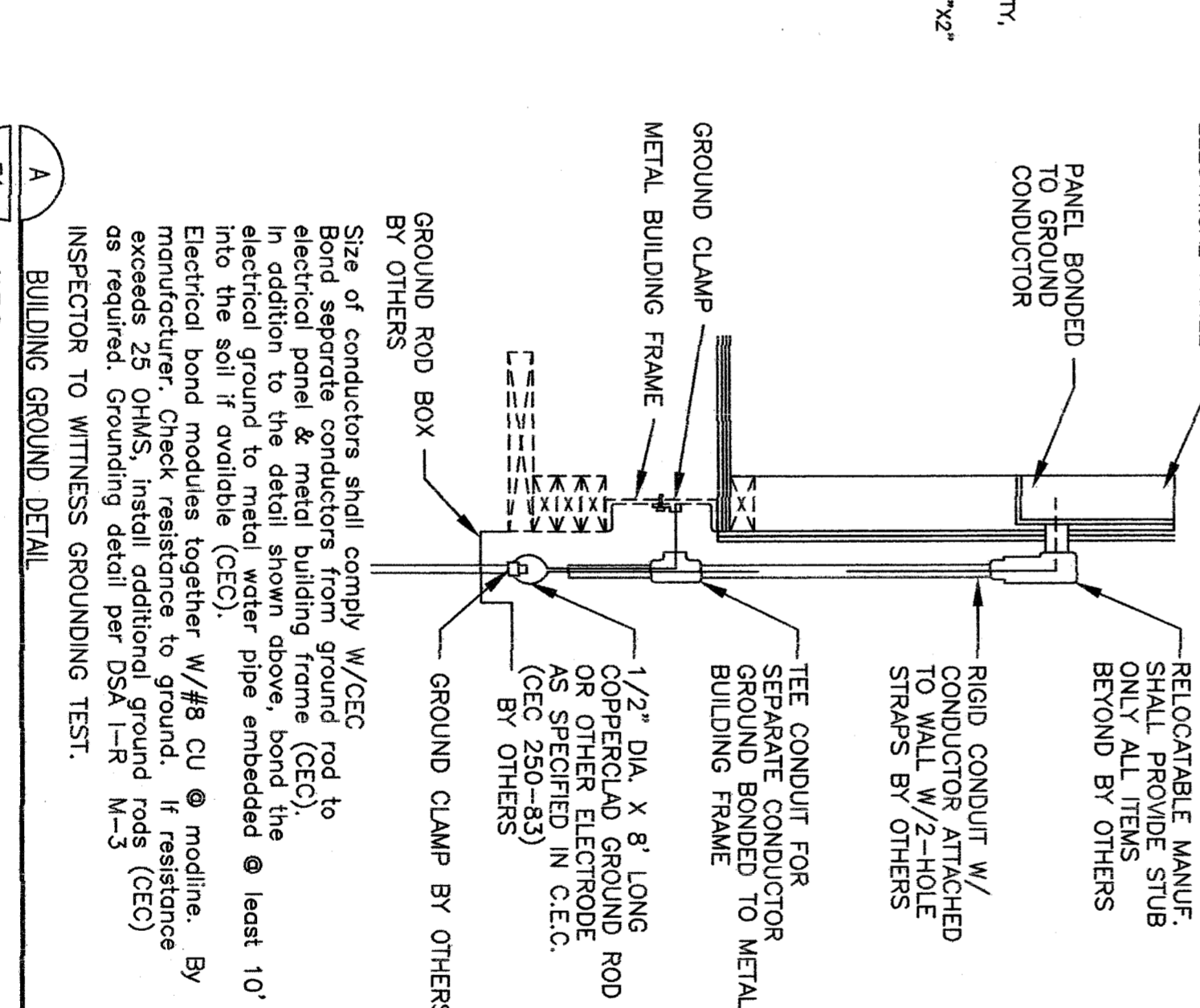


- WIRE HANGER (TYP) (NOT T-BAR GRID SUPPORT)
- 12 GA. (4) TOTAL ATTACHED TO FRAMING ABOVE, SEE SH-1.3
- FIGURE TAB (3) TIGHT TURNS WITHIN 1 1/2" (TYP. EA. CRNR)
- #8 S.M.S. EA. END (TYP)
- PROVIDE WIRE HANGERS AND E.O. CLIPS AS REQUIRED BY CALIFORNIA SEISMIC REGULATIONS T-24, SEC.2501.A.5 & IR. M-3
- Site of conductors shall comply W/CEC



2 ELECTRICAL PLAN
SCALE: 3/16"=1'-0"

- STANDARD ELECTRICAL SYMBOLS
- FLUORESCENT LIGHTING FIXTURE - SURFACE MOUNTED.
 - FLUORESCENT LIGHTING FIXTURE - RECESSED.
 - INCANDESCENT LIGHTING FIXTURE - WALL MOUNTED (EXTERIOR).
 - INCANDESCENT LIGHTING FIXTURE - WALL MOUNTED (INTERIOR).
 - DUPLEX WALL CONVENIENCE OUTLETS +18" TO CENTER LINE.
 - SINGLE POLE LIGHT SWITCHES +48" HUBBELL PREMIUM, BRYANT HEAVY DUTY, OR LEVITON SPECIFICATIONS GROUP.
 - ELECTRICAL CROSSOVER - 4-BOXES ABOVE T-BAR CEILING #1-4"x1", #22-4"x2".
 - WALL CLOCK OUTLET WITH POWER OUTLET -48".
 - SWITCH SUBSCEPTS - 4-DEVICE CONTROLLED.
 - 15 AMP DUPLEX RECEPTACLE +18" TO CENTER LINE.
 - JUNCTION BOX - SIZE AND TYPE AS REQUIRED.
 - PANELBOARD - SEE SCHEDULE.
 - TERMINAL CABINET - SIZE AND TYPE AS NOTED.
 - CONDUIT CONCEALED IN CEILING OR WALL.
 - CONDUIT CONCEALED BELOW FLOOR OR GRADE.
 - HORIZONTAL TO RESPECTIVE PANEL TO TERMINAL.
 - INDICATES #12 (GREEN) GROUND WIRE. OTHER SIZES AS INDICATED.
 - BRANCH CIRCUIT WITHOUT FURTHER DESIGNATION IS A 20/12 WIRE CIRCUIT. FOR MORE THAN 20/12 WIRES AS FOLLOWS: 3#12, 4#12 ETC. FOR OTHER SIZES AS FOLLOWS: 3#10, 4#6 ETC.
 - FIGURE IDENTIFICATION - LETTER INDICATES TYPE.
 - N.I.E.S. ABBREVI. FOR NOT IN ELECTRICAL SECTION OF THESE PLANS AND SPECS.
 - FUSED DISCONNECT SWITCH SIZE AS REQUIRED. PROVIDE FUSES AS RECOMMENDED BY EQUIPMENT SUPPLIER.
 - WALL MOUNTED EXHAUST FAN N.I.E.S. CONNECT AS REQUIRED.
 - 50 AMP 250 VOLT RANGE RECEPTACLE.
 - FIRE ALARM STATION - OUTLET ONLY. 4" SQ. BOX W/ SINGLE DEVICE RING AND COVER +48"
 - FIRE ALARM HORN - OUTLET ONLY. 4" SQ. BOX W/ SINGLE DEVICE RING AND COVER +48"
 - FIRE ALARM HORN - OUTLET ONLY. 4" SQ. BOX W/ SINGLE DEVICE RING AND COVER +48"
 - INTERCOM TELEPHONE - OUTLET ONLY. 4" SQ. BOX W/ SINGLE DEVICE RING AND COVER +48"
 - FIRE ALARM VISUAL ALARM - OUTLET ONLY - 4" SQ. BOX W/ SINGLE DEVICE RING AND COVER BOTTOM +60". A.I.F. BUT NO GREATER THAN +96".



- ELECTRICAL PANEL
- RELOCATABLE MANUF. SHALL PROVIDE STUB ONLY ALL ITEMS BEYOND BY OTHERS
 - PANEL BONDED TO GROUND CONDUCTOR
 - RIGID CONDUIT W/ CONDUCTOR ATTACHED TO WALL W/ 2-HOLE STRAPS BY OTHERS
 - SEPARATE CONDUCTOR FOR GROUND BONDED TO METAL BUILDING FRAME
 - TEE CONDUIT FOR SEPARATE CONDUCTOR TO METAL BUILDING FRAME
 - 1 1/2" DIA. X 8' LONG COPPER-BOND GROUND AS SPECIFIED IN C.E.C. BY OTHERS
 - GROUND CLAMP BY OTHERS
 - GROUND ROD BOX
 - Size of conductors shall comply W/CEC
 - Bond separate conductors from ground rod to electrical panel & metal building frame (CEC).
 - In addition to the detail shown above, bond the electrical ground to metal water pipe embedded @ least 10' into the soil if available (CEC).
 - Electrical bond modules together W/#8 CU @ module. By manufacturer. Check resistance to ground. If resistance exceeds 25 OHMS, install additional ground rods (CEC) as required. Grounding detail per DSA I-4 (M-3) INSPECTOR TO WITNESS GROUNDING TEST.

3 ELECTRICAL PANEL - A
SCALE: 3/16"=1'-0"

VOLTS:	120/240 SINGLE PHASE			FEED: EXTERIOR LB	
	MAIN:	200 AMP MAIN BRK	WATTS	LOCATION: INTERIOR	MOUNTING: FLUSH
LOAD	A	B	C	BRK	A
LIGHTS, FLUORESCENT	570	15 1 1 1	2,290	7810	
LIGHTS, FLUORESCENT	100	15 1 5	4,290	7810	
EXTERIOR LIGHT & CLOCK	720	15 1 7	10		
DUPLEX RECEPT.	720	15 1 1 7	10		
LIGHTS, FLUORESCENT	570	15 1 1 1	12		
DUPLEX RECEPT.	720	15 1 1 3	14		
DUPLEX RECEPT.	720	15 1 1 5	16		
NAC Reverse SUPPLY	18	17	18		
SPACE	19	19	20		
SPACE	21	21	22		
PHASE WATTAGE	2110/2580			7810/2810	
TOTAL WATTS: 20310	85			TOTAL WATTS: 200AMP BUS.	
TOTAL WATTS: 20310	85			TOTAL WATTS: 120/240V SINGLE PHASE	

FEEDERS TO BE RUN BY THE DISTRICT EITHER UNDERGROUND OR OVERHEAD. SEE SITE ELEC. PLAN.

SYMBOL	DESCRIPTION	WATTS	MANUFACTURER
2 X 4	FLUORESCENT DROP IN FIXTURE, ACRYLIC PRISMATIC LENS, T-8 ELECTRONIC BALLASTS (3)35 WATT TUBES, WT. 27 LBS.	SP41 32 W	CRESCENT MASTER 24GP33ZFS411KOVU1 SLAVE 24GP33ZFS411XXXV6
⊗	FLUORESCENT SURFACE MOUNTED EXTERIOR LIGHT WITH IMPACT RESISTANT ENCLOSURE. 1.25 THICK CLEAR PRISMATIC ONE PIECE LENS W/ NEOPRENE GASKET & "POSSIGRIP" STAINLESS STEEL SOREMS.	(2) 7W OR 2700 K OR EQUAL	ENERTRON 70268-1

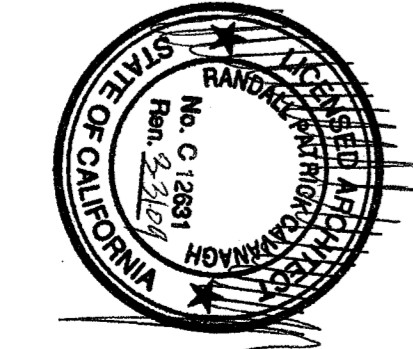
- FOR GROUNDING BLDG. FRAME & PANEL W/ #8 WIRE SEE GROUNDING DETAIL PER I.R. 8-1 STUB OUT FITTING FOR UNDERGROUND OR OVERHEAD SERVICE BY OTHERS. SEE ELECTRICAL NOTE #2.
- SEE TYPICAL CLASSROOM LAYOUT FOR LOCATIONS OF ALL DEVICES. FEATURE MOUNTING SHALL COMPLY WITH CALIFORNIA SEISMIC REGULATIONS. THE LIGHTS FOR EACH ROOM OVER 250 SQUARE FEET SHALL BE CONTROLLED BY ULTRASONIC OCCUPANCY SENSOR, WATT STOPPER W-500A, W-1000A, OR W-2000A (OR EQUAL) BASED ON THE ROOM SIZE. IN CONJUNCTION WITH BI-LEVEL SWITCHING.
- 120/208 VOLT IN COMING POWER IS ACCEPTABLE.
- FIRE ALARM SYSTEM
- THE FIRE ALARM SYSTEM SHALL CONFORM TO THE CALIFORNIA ELECTRICAL CODE. THE SYSTEM SHALL NOT BE INSTALLED UNTIL DETAILED PLANS AND SPECIFICATIONS, INCLUDING CALIFORNIA STATE FIRE MARSHAL LISTING NUMBERS FOR EACH COMPONENT OF THE SYSTEM HAVE BEEN APPROVED BY THE DIVISION OF THE STATE ARCHITECT.
 - UPON COMPLETION OF THE INSTALLATION OF THE FIRE ALARM SYSTEM, A SATISFACTORY TEST OF THE ENTIRE SYSTEM SHALL BE MADE IN THE PRESENCE OF THE DIVISION OF THE STATE ARCHITECT.
 - VISUAL ALARMS IN TOILET ROOMS.
- GENERAL NOTES
- GROUNDING ELECTRODE CONDUCTOR SIZED PER CEC
 - PROVIDE BONDS TO BLDG. STEEL & PANEL (#8 CU)
 - PANEL TO LISTED FOR USE AS SERVICE EQUIPMENT.

NOTE: THE PROJECT ARCHITECT SHALL BE RESPONSIBLE FOR THE LOCATION OF HEAT AND SMOKE DETECTORS WHEN THE SITE SPECIFIC PROJECT IS REQUIRED TO MEET THE PROVISIONS OF SB 575

NOTE: STUB OUT LOCATIONS FOR ELECTRICAL PANEL, FIRE ALARM, AND DATA BOXES. LOCATIONS SHOWN ARE DIAGNOSTIC ONLY. FEET CONDUCTOR CONTACT AMERICAN MODULAR SYSTEMS FOR EXACT LOCATIONS. POINT OF CONNECTION WILL BE AT FACE OF BUILDING.

IDENTIFICATION STAMP
DIV. OF THE STATE ARCHITECT
APPROX 11 06 94
AC FLS. SS
DATE JUN 15 2002

IDENTIFICATION STAMP
DIV. OF THE STATE ARCHITECT
APPROX 11 06 95
AC FLS. SS
DATE



36X40 PC
RELOCATABLE
CLASSROOM

ZMIS
American Modular Systems Inc.
727 Sepulveda Ave. Menlo Park, CA 94025
(415) 325-1921 Fax: (415) 325-7018
americanmodular.com

CUSTOMER:
BAKERSFIELD CITY SCHOOLS

ELECTRICAL PLAN, DETAILS & NOTES

NO.	DATE	DESCRIPTION

DATE: 05/28/2007
SCALE: NONE
DRAWN BY: DM
CHECKED BY:
SERIAL NO.

PROJECT NO.
SHEET NO. E1