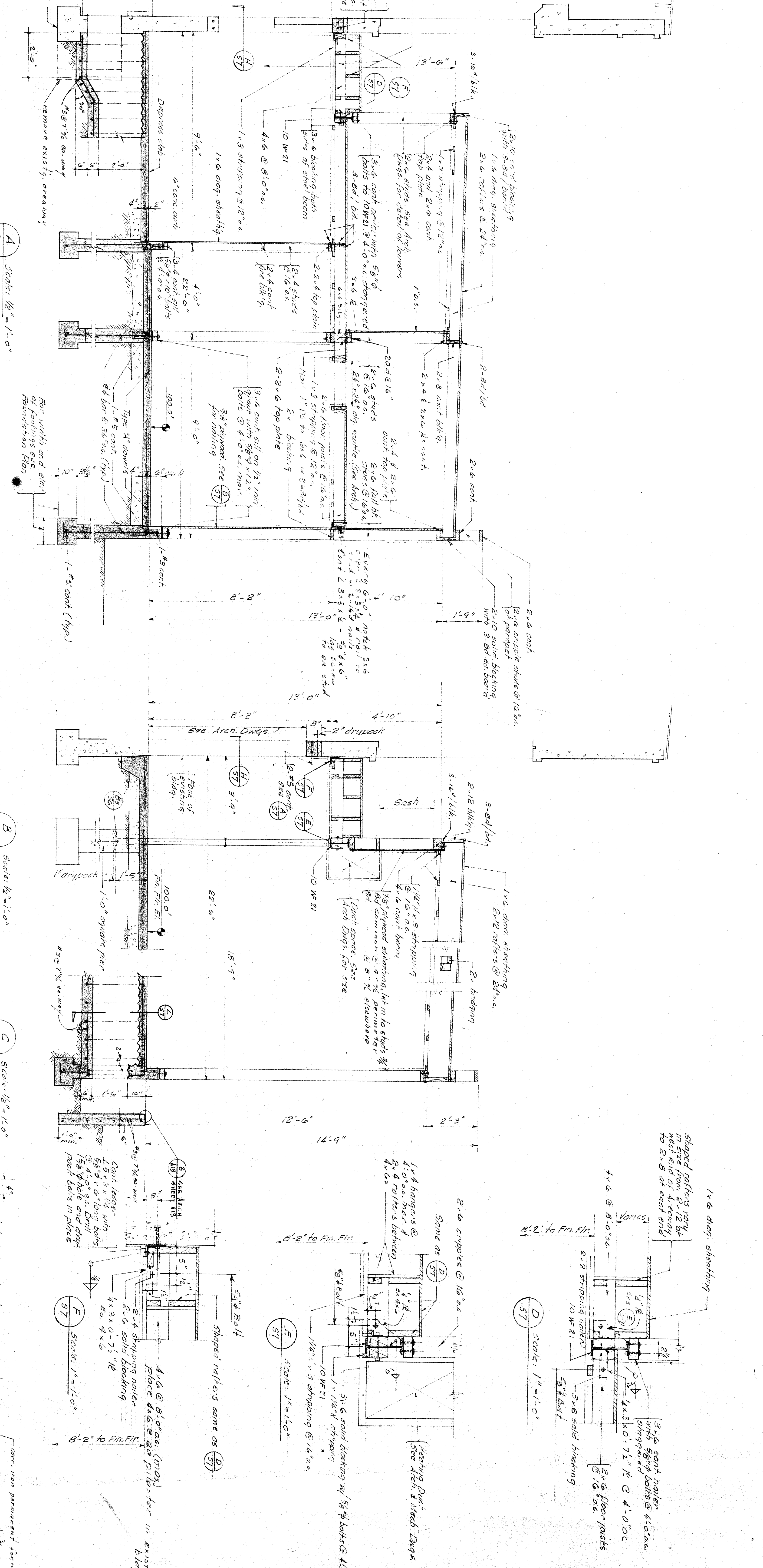
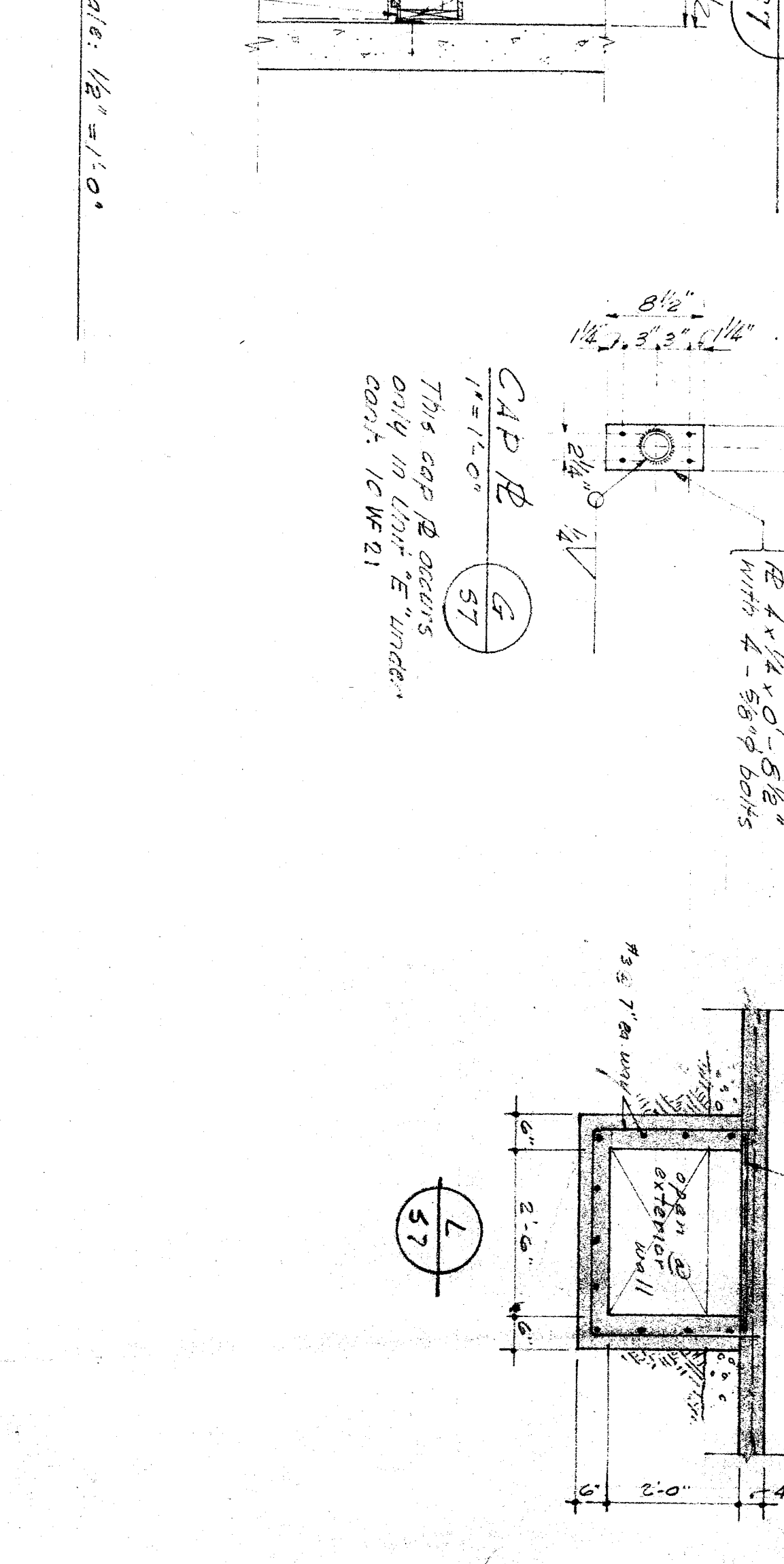
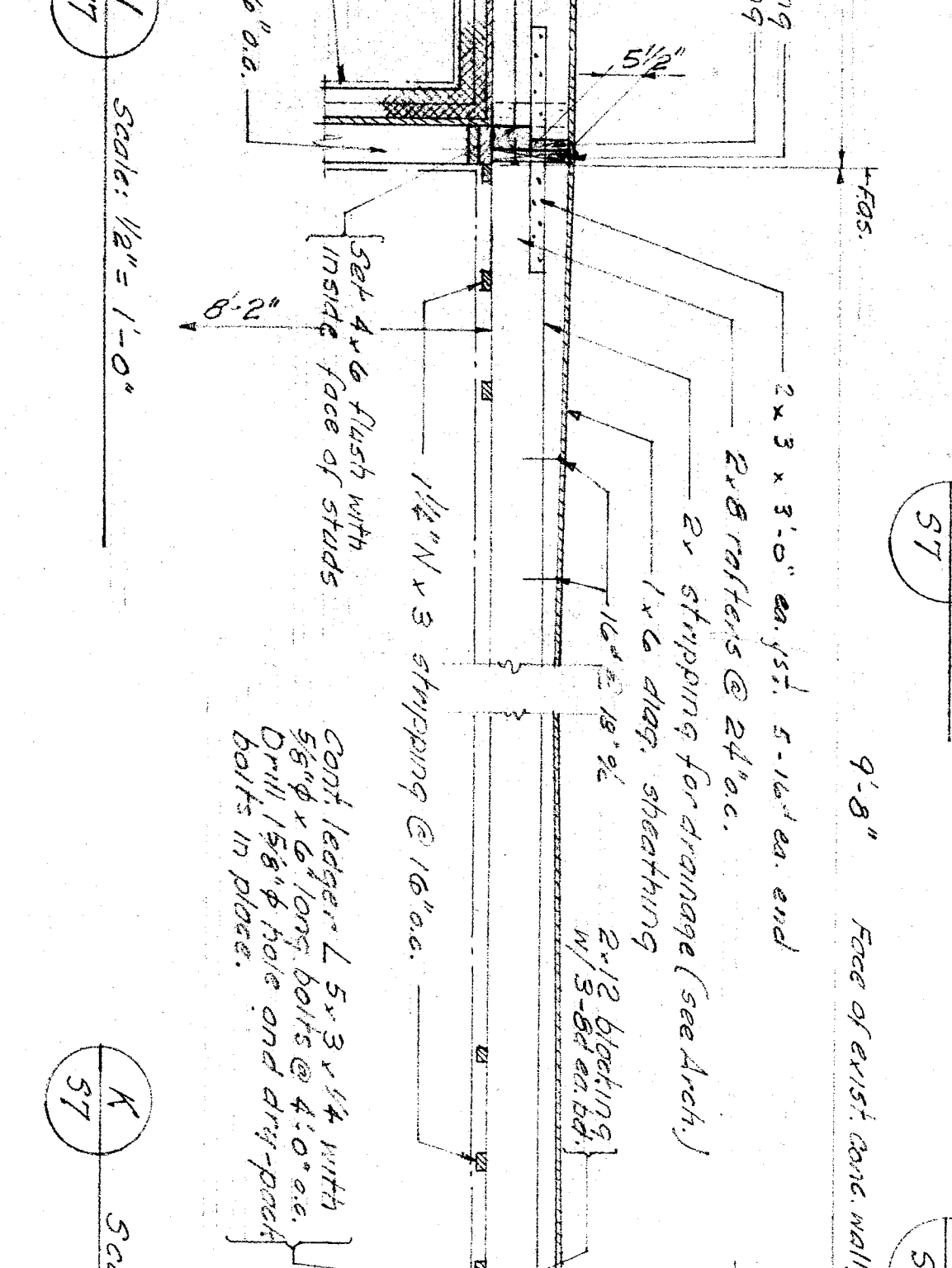
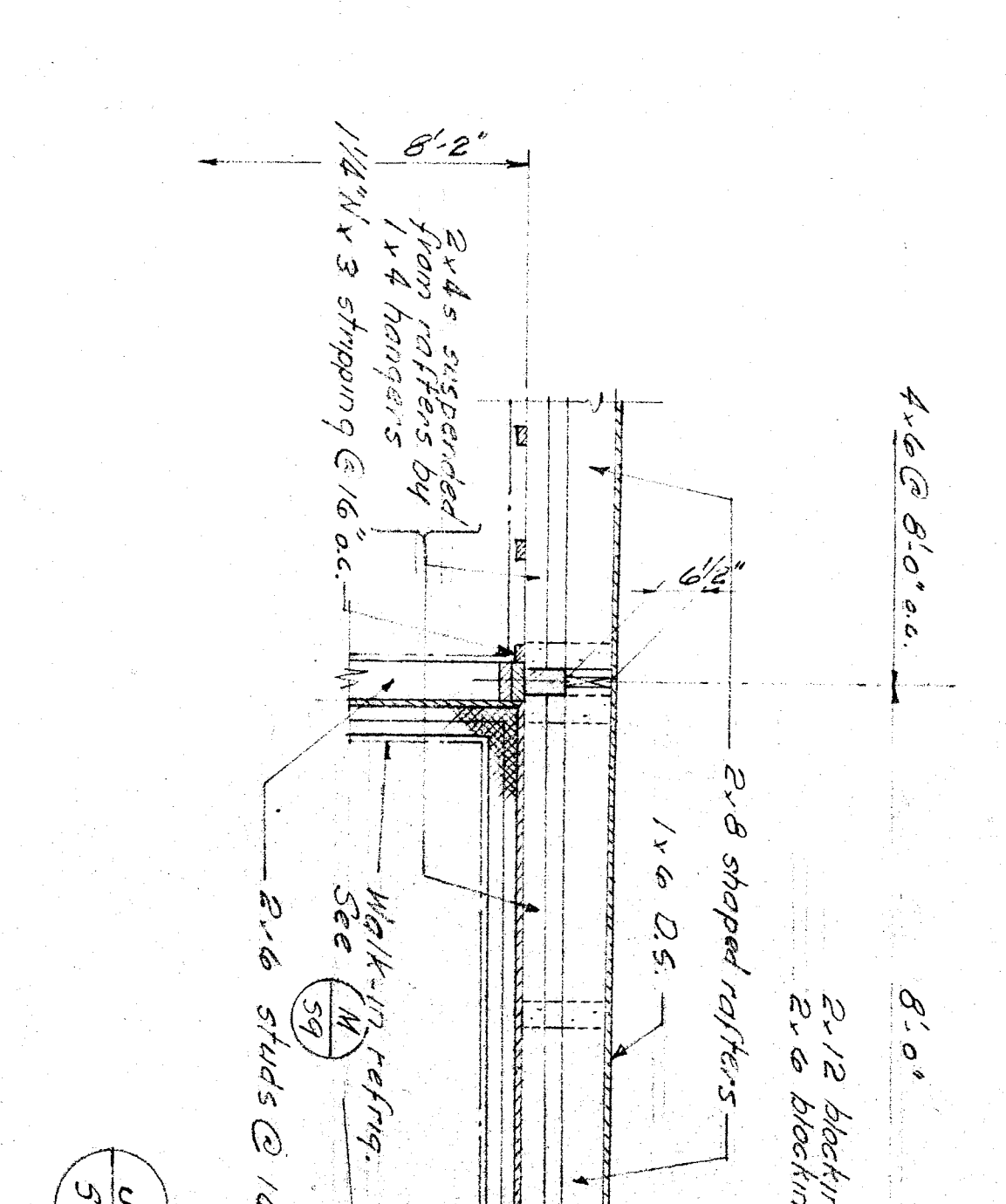
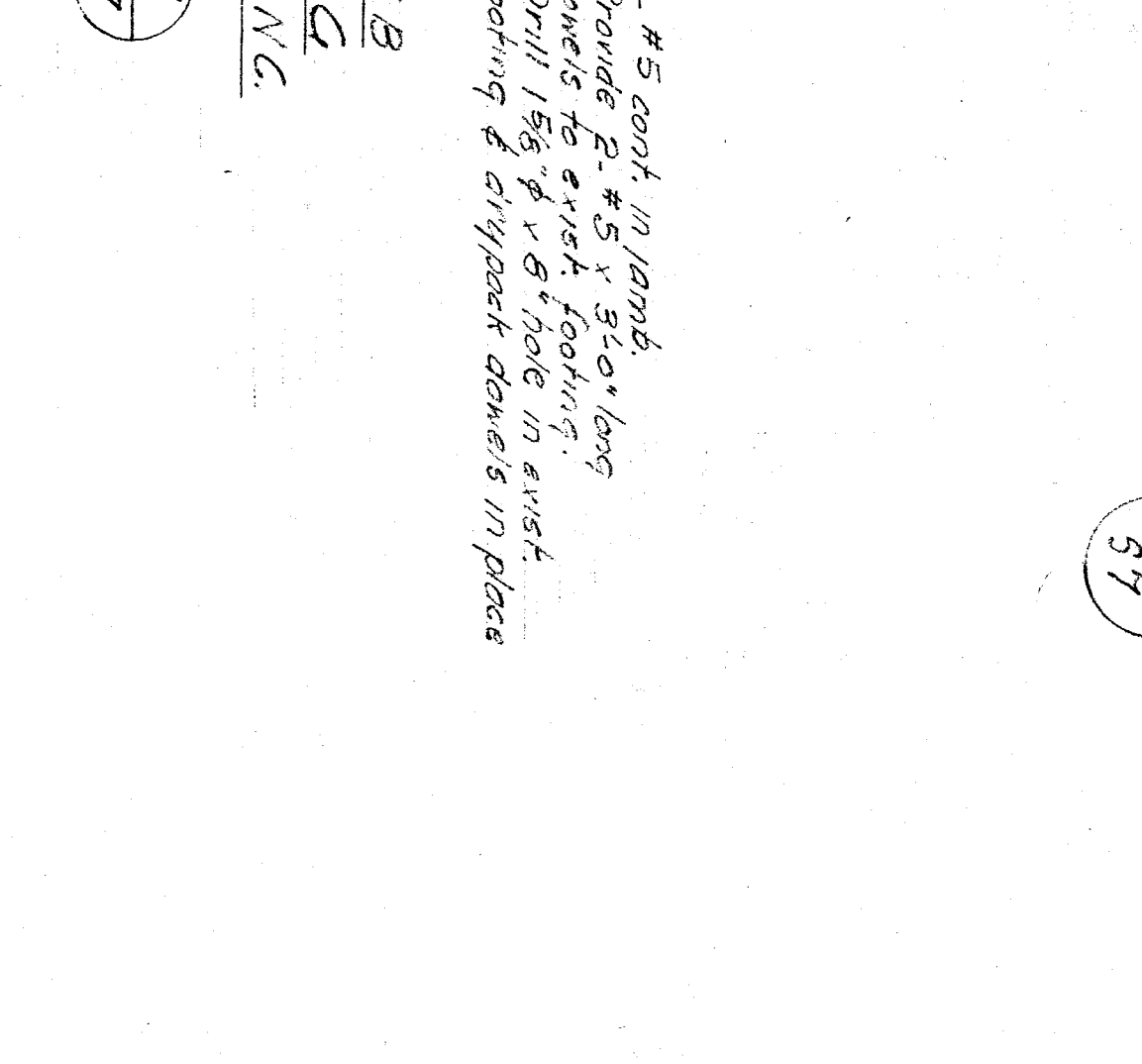


**DETAIL OF JAMB
AT NEW OPENING
IN EXISTING CONC.
WALL**

SECTION H
Scale: 1/2" = 1'-0"



SECTIONS & DETAILS - UNIT E

HILLMAN & NOWELL
STRUCTURAL ENGINEERS
1150 L STREET, SUITE 100
OAKLAND, CALIFORNIA 94612
DATE: 11/15/53

OFFICE OF SUPERINTENDENT OF SCHOOLS
STATE OF CALIFORNIA
DEPARTMENT OF PUBLIC WORKS
DIVISION OF ARCHITECTURE
APPROVED: [Signature] DATE: 11/15/53

STATE OF CALIFORNIA
DEPARTMENT OF PUBLIC WORKS
APPROVED: [Signature] DATE: 11/15/53
OFFICIAL SEAL

BAKERFIELD CITY SCHOOLS
1500 K. ST. BAKERFIELD, CALIFORNIA
BOARD OF EDUCATION
APPROVED: [Signature] DATE: May 12, 1953
OFFICIAL SEAL

ROOSEVELT ELEM. SCHOOL ADDITION
BAKERFIELD CITY SCHOOL DISTRICT
2324 VERDE ST.
BAKERFIELD, CALIFORNIA
APPROVED: [Signature] DATE: May 12, 1953
OFFICIAL SEAL

ERNEST L. MCCOY A.I.A. ARCHITECT
BANKERS BUILDING
SAN FRANCISCO, CALIFORNIA
DATE: 11/10/53
JOB NO. 25-22
DRAWN BY: [Signature]
CHECKED BY: [Signature]
SCALE: AS SHOWN

SHEET NO. 10
OF 1 SHEETS