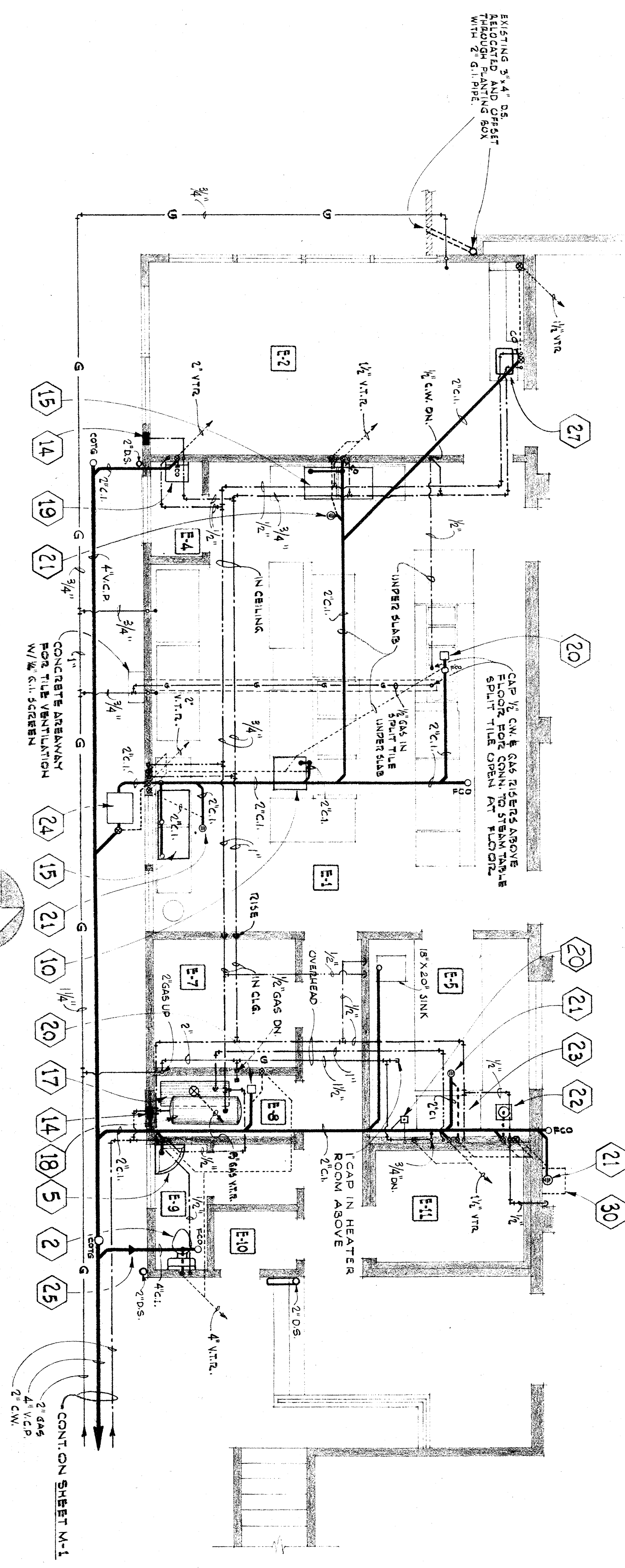
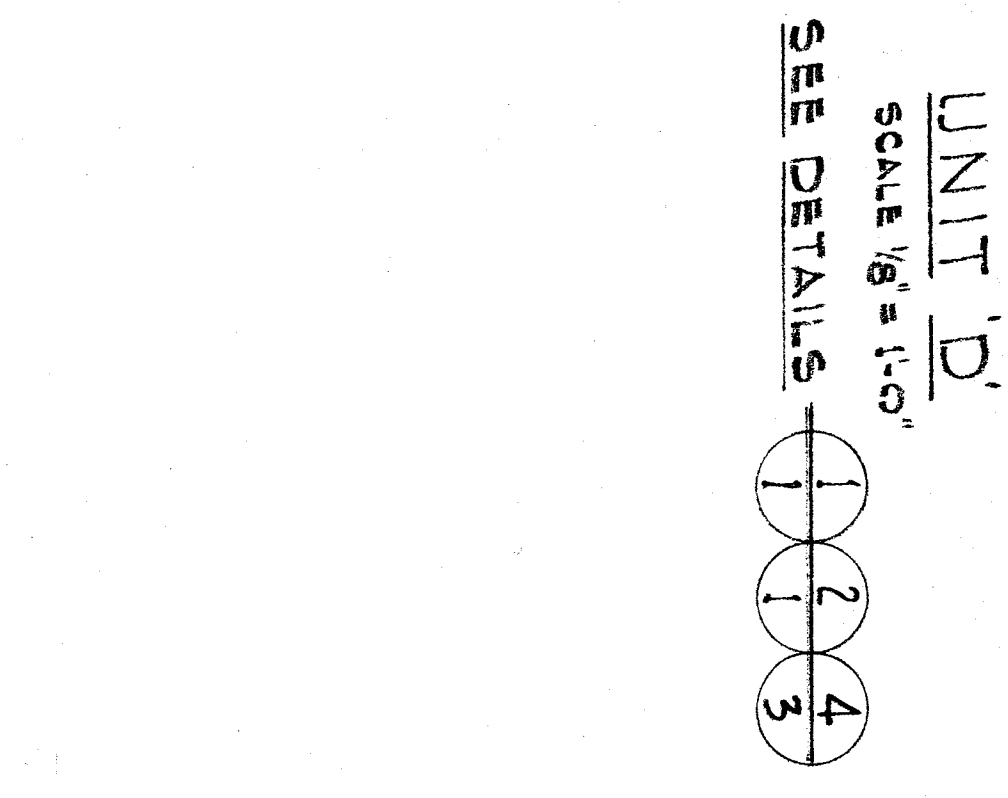
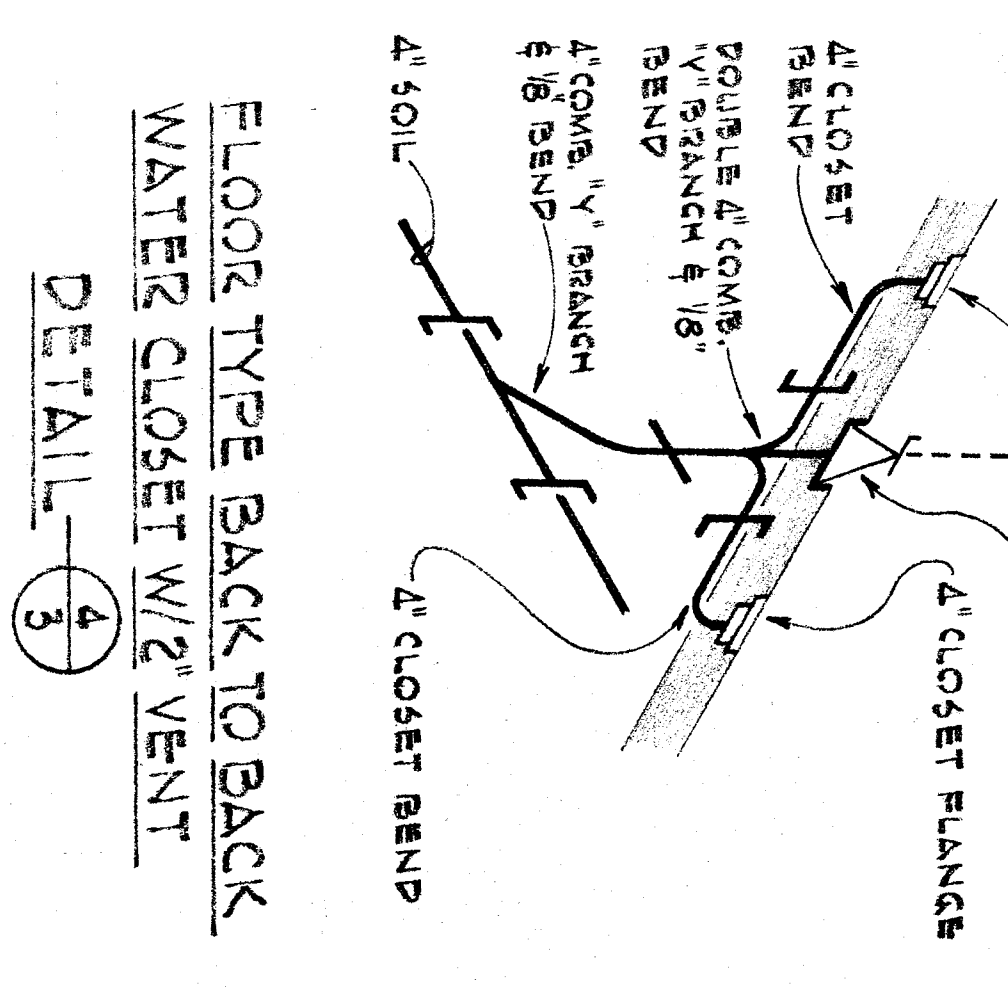
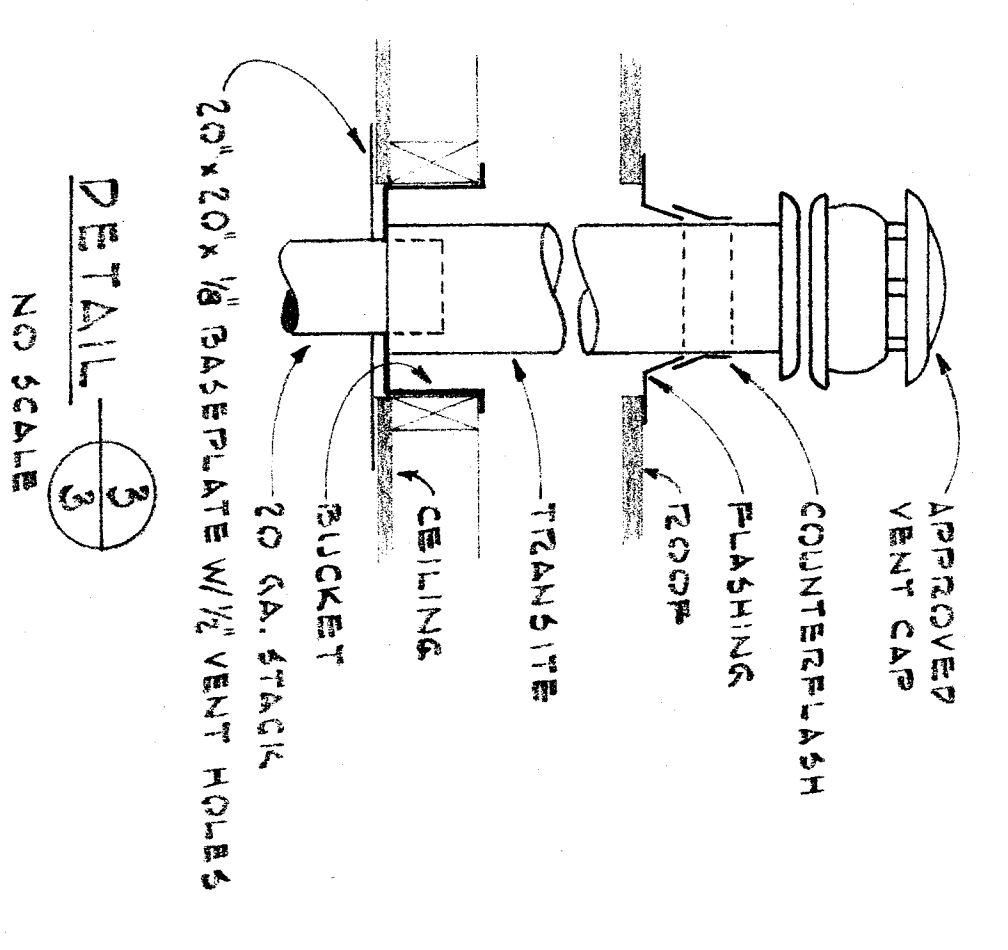
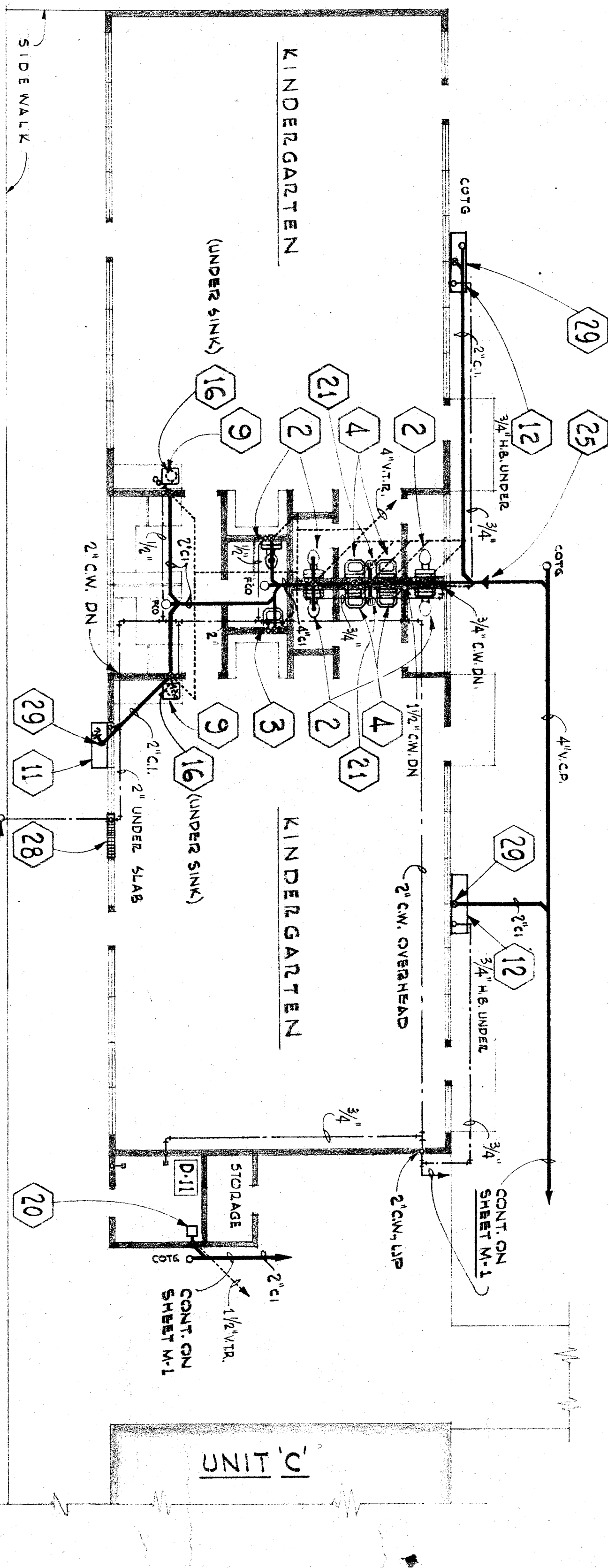
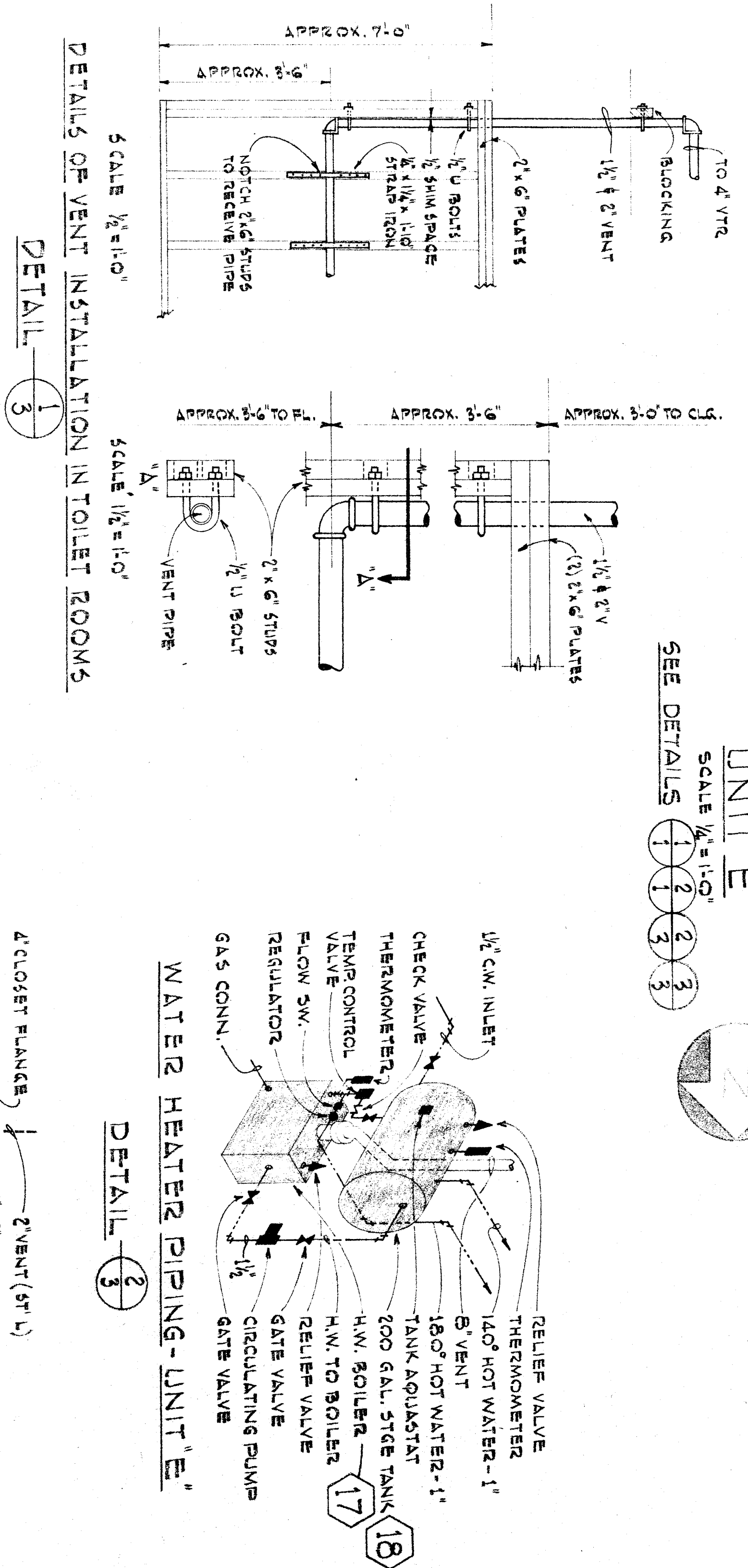


EXISTING BUILDING



SYMBOL	DESCRIPTION	C/W	H/W	TRAP	VENT	REMARKS
1	WATER CLOSET	1/2"	1/2"	4"	2"	1" F.L.S.H. VALVE
2	WATER CLOSET	1/2"	1/2"	4"	2"	1" FLUSH TANK
3	LAVATORY	1/2"	1/2"	2"	1/2"	
4	LAVATORY	1/2"	1/2"	2"	1/2"	
5	LAVATORY	1/2"	1/2"	2"	1/2"	
6	WASH SINK	3/4"	3/4"	2"	1/2"	3/4" FLUSH VALVE
7	WASH SINK	3/4"	3/4"	2"	1/2"	(4) C.W. FAUCETS
8	SINK, FLAT RIM, 24" X 18"	1/2"	1/2"	2"	1/2"	
9	SINK, FLAT RIM, 24" X 18"	1/2"	1/2"	2"	1/2"	
10	SINK, FLAT RIM, 24" X 18"	1/2"	1/2"	2"	1/2"	
11	DRINKING FOUNTAIN	3/4"	3/4"	2"	1/2"	
12	DRINKING FOUNTAIN	3/4"	3/4"	2"	1/2"	
13	DRINKING FOUNTAIN	3/4"	3/4"	2"	1/2"	
14	WALL HYDRANT	3/4"	3/4"	2"	1/2"	
15	SKULLERY SINK	1/2"	1/2"	2"	1/2"	2 DRAINBOARDS
16	WATER HEATER (ELECT.)	1/2"	1/2"	224.000	570/INP.	750 WATTS
17	WATER HEATER (GAS)	1/2"	1/2"	200 GAL.	PIPE SUPPORTS	1/2" HP CIRC. PUMPER
18	STORAGE TANK	1/2"	1/2"			
19	SERVICE SINK	1/2"	1/2"	3"	3"	2"
20	FLOOR SINK	1/2"	1/2"	3"	3"	2"
21	FLOOR DRAIN	1/2"	1/2"			W/ TRAP PRIMER (AUTO.)
22	GARBAGE DISPOSAL	1/2"	1/2"			W/ TRAP PRIMER (AUTO.)
23	WASHER	3/4"	3/4"	2"	1/2"	1/2" HP MOTOR, 12XIT C.I. SINK
24	GREASE TRAP	3/4"	3/4"	2"	1/2"	BY OWNER-CONNECT UP
25	INCREASER, C.I.	1/2"	1/2"			40 LB. CAP.
26	VALVE BOX, CONC.	1/2"	1/2"			C.I. TO V.C.P.
27	SINK, FLAT RIM, 18" X 12"	1/2"	1/2"	2"	1/2"	SERVICE CONSPICUOUSLY MARKED
28	FIRE HOSE CABINET	2"	2"			2 1/2 GAL. FIRE EXTINGUISHER
29	DRUM TRAP	2"	2"			OWNER PROVIDED-CONNECT UP
30	WATER COOLER	1/4"	1/4"			

UNIT 'E'



PLUMBING

OFFICE OF SUPERINTENDENT OF SCHOOLS  
 STATE OF CALIFORNIA  
 DEPARTMENT OF PUBLIC WORKS  
 DIVISION OF ARCHITECTURE

STATE OF CALIFORNIA - DEPARTMENT OF PUBLIC WORKS  
 DIVISION OF ARCHITECTURE  
 APPROVED: [Signature]  
 DATE: MAY 12 1953

BAKERSFIELD CITY SCHOOLS  
 1600 K ST. BAKERSFIELD CALIFORNIA  
 BOARD OF EDUCATION

ROOSEVELT ELEM. SCHOOL ADDITION  
 BAKERSFIELD CITY SCHOOL DISTRICT  
 2324 VEASE STREET  
 CALIFORNIA

ERNEST L. MCCOY A. I. A. ARCHITECT  
 2811 H STREET  
 BAKERSFIELD

CASE No. 53-22  
 DRAWN BY: [Signature]  
 CHECKED BY: [Signature]  
 DATE: [ ]