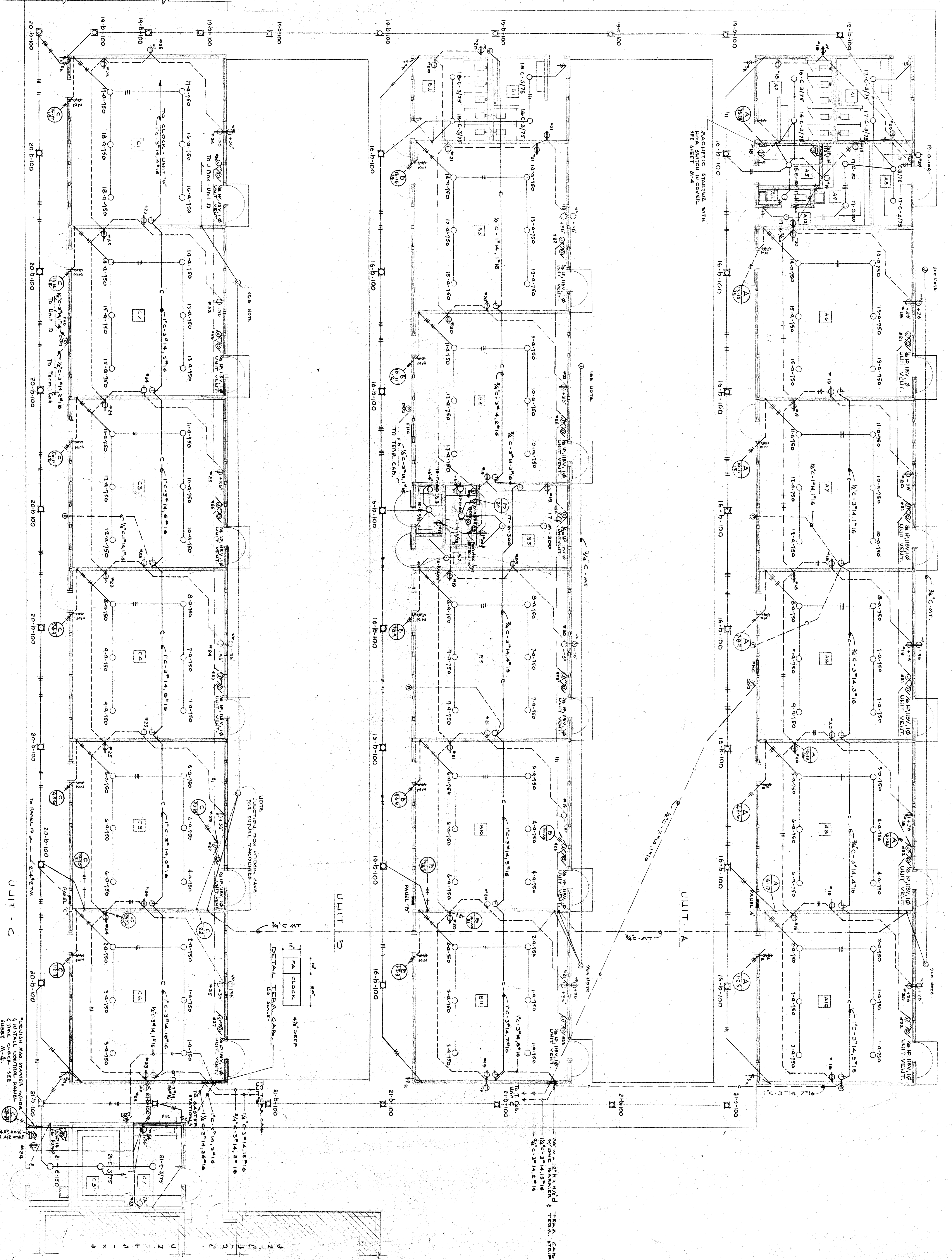


PANEL - A				TYPE	QUANTITY	LOCATION
NO.	DESCRIPTION	LOAD	IN WATTS	ΦA	ΦB	ΦC
1	200 WATT LIGHTS	200	200			
2	1500 WATT LIGHTS	1500	1500			
3	1500 WATT LIGHTS	1500	1500			
4	1500 WATT LIGHTS	1500	1500			
5	1500 WATT LIGHTS	1500	1500			
6	1500 WATT LIGHTS	1500	1500			
7	1500 WATT LIGHTS	1500	1500			
8	1500 WATT LIGHTS	1500	1500			
9	1500 WATT LIGHTS	1500	1500			
10	1500 WATT LIGHTS	1500	1500			
11	1500 WATT LIGHTS	1500	1500			
12	1500 WATT LIGHTS	1500	1500			
13	1500 WATT LIGHTS	1500	1500			
14	1500 WATT LIGHTS	1500	1500			
15	1500 WATT LIGHTS	1500	1500			
16	1500 WATT LIGHTS	1500	1500			
17	1500 WATT LIGHTS	1500	1500			
18	1500 WATT LIGHTS	1500	1500			
19	1500 WATT LIGHTS	1500	1500			
20	1500 WATT LIGHTS	1500	1500			
21	1500 WATT LIGHTS	1500	1500			
22	1500 WATT LIGHTS	1500	1500			
23	1500 WATT LIGHTS	1500	1500			
24	1500 WATT LIGHTS	1500	1500			
25	1500 WATT LIGHTS	1500	1500			
26	1500 WATT LIGHTS	1500	1500			
27	1500 WATT LIGHTS	1500	1500			
28	1500 WATT LIGHTS	1500	1500			
29	1500 WATT LIGHTS	1500	1500			
TOTAL		12350	11840	10600		

PANEL - B				TYPE	QUANTITY	LOCATION
NO.	DESCRIPTION	LOAD	IN WATTS	ΦA	ΦB	ΦC
1	200 WATT LIGHTS	200	200			
2	1500 WATT LIGHTS	1500	1500			
3	1500 WATT LIGHTS	1500	1500			
4	1500 WATT LIGHTS	1500	1500			
5	1500 WATT LIGHTS	1500	1500			
6	1500 WATT LIGHTS	1500	1500			
7	1500 WATT LIGHTS	1500	1500			
8	1500 WATT LIGHTS	1500	1500			
9	1500 WATT LIGHTS	1500	1500			
10	1500 WATT LIGHTS	1500	1500			
11	1500 WATT LIGHTS	1500	1500			
12	1500 WATT LIGHTS	1500	1500			
13	1500 WATT LIGHTS	1500	1500			
14	1500 WATT LIGHTS	1500	1500			
15	1500 WATT LIGHTS	1500	1500			
16	1500 WATT LIGHTS	1500	1500			
17	1500 WATT LIGHTS	1500	1500			
18	1500 WATT LIGHTS	1500	1500			
19	1500 WATT LIGHTS	1500	1500			
20	1500 WATT LIGHTS	1500	1500			
21	1500 WATT LIGHTS	1500	1500			
22	1500 WATT LIGHTS	1500	1500			
23	1500 WATT LIGHTS	1500	1500			
24	1500 WATT LIGHTS	1500	1500			
25	1500 WATT LIGHTS	1500	1500			
26	1500 WATT LIGHTS	1500	1500			
27	1500 WATT LIGHTS	1500	1500			
28	1500 WATT LIGHTS	1500	1500			
29	1500 WATT LIGHTS	1500	1500			
TOTAL		12160	12210	11450		

TYPE	DESCRIPTION	WATTAGE	ATG	SKETCH
a	3000 WATT HALLWAY	750	3000	
b	3000 WATT HALLWAY	750	3000	
c	3000 WATT HALLWAY	750	3000	
d	3000 WATT HALLWAY	750	3000	
e	3000 WATT HALLWAY	750	3000	
f	3000 WATT HALLWAY	750	3000	
g	3000 WATT HALLWAY	750	3000	
h	3000 WATT HALLWAY	750	3000	
i	3000 WATT HALLWAY	750	3000	
j	3000 WATT HALLWAY	750	3000	
k	3000 WATT HALLWAY	750	3000	
l	3000 WATT HALLWAY	750	3000	
m	3000 WATT HALLWAY	750	3000	
n	3000 WATT HALLWAY	750	3000	
o	3000 WATT HALLWAY	750	3000	



EDWARD COVE ENGINEER  
 1000 PAVAN AVENUE  
 CALIFORNIA

OFFICE OF SUPERINTENDENT OF SCHOOLS  
 DEPARTMENT OF PUBLIC WORKS  
 DIVISION OF ARCHITECTURE

STATE OF CALIFORNIA  
 DIVISION OF ARCHITECTURE  
 APPROVED NOV 2 1933  
 ARCHITECT

BAKERSFIELD CITY SCHOOLS  
 1600 N ST BAKERSFIELD CALIFORNIA  
 BOARD OF EDUCATION

ROOSEVELT ELEM SCHOOL ADDITION  
 BAKERSFIELD CITY SCHOOL DISTRICT  
 2324 VERMONT STREET  
 BAKERSFIELD CALIFORNIA

ERNEST L. MCCOY A.A.A. ARCHITECT  
 2311 H STREET  
 BAKERSFIELD CALIFORNIA

DATE: 11-1-33  
 DRAWN: J.M.  
 CHECKED: J.M.  
 SHEET NO. 2 OF 2 SHEETS

NOTE: JUNCTION BOX UNDER SLAB FOR FUTURE WARDEN'S OFFICE

DETAIL: TYPICAL CABINETS

SCALE: 1/8" = 1'-0"

FLOOR PLAN OF UNIT A, B, & C