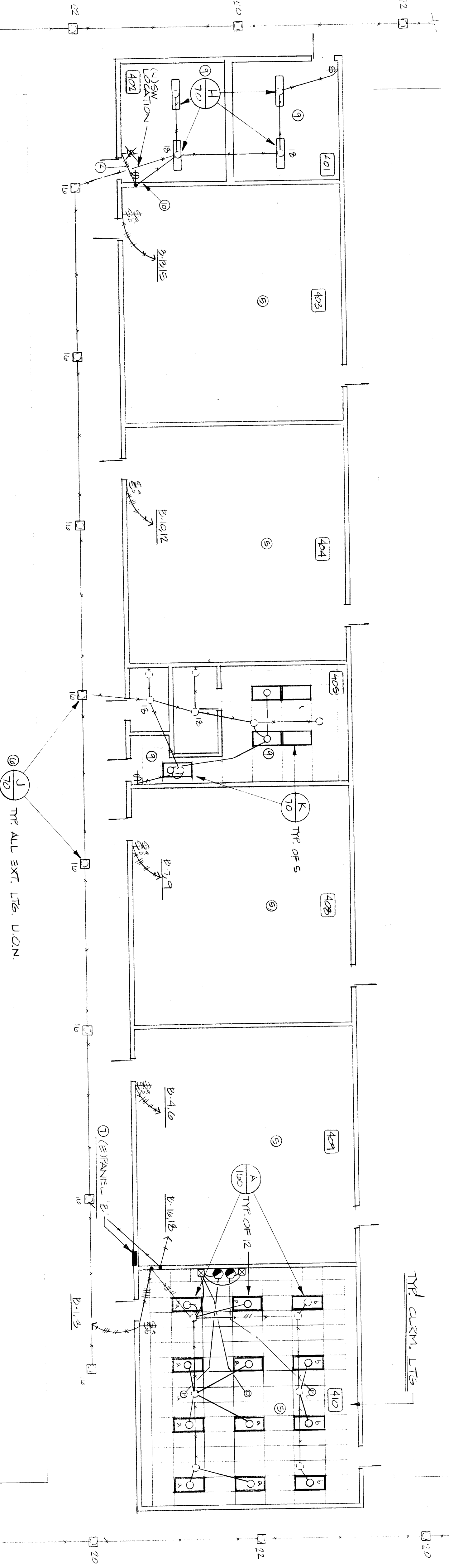


**BLDG. 400
POWER & SIGNAL FLOOR PLAN**
1/8" = 1'-0"



**BLDG. 400
LIGHTING FLOOR PLAN**
1/8" = 1'-0"

- REFERENCE NOTES: THIS SHEET ONLY:
- 1 EXTEND EXISTING OUTLET WITH WIREMEND, 45751 BOX AND INSTALL NEW SURFACE MOUNTED RECEPTACLE WITH ALL ACCESSORIES NECESSARY FOR PROPER INSTALLATION TO NEW SURFACE MOUNTED OUTLET (BOX #5747) AS SHOWN. RACEWAY TO BE PAINTED TO MATCH WALL. TYPICAL EACH CLASSROOM.
 - 2 USE EXISTING A/C CIRCUIT FOR NEW UNIT VENTILATOR AS SHOWN. TYPICAL EACH CLASSROOM.
 - 3 INTERCEPT EXISTING RACEWAY AND INSTALL NEW HOLEDRUM AS SHOWN.
 - 4 EXISTING RACEWAY TO BE DISCONNECTED AND ABANDONED.
 - 5 REMOVE EXISTING CLASS ROOM LIGHTING AND INSTALL NEW LIGHTING, SENSING AND CONTROL AS SHOWN. CONNECT NEW LIGHTING TO EXISTING CIRCUITS AS TO SHOWN. TYPICAL EACH CLASSROOM. OLD FIXTURES SHALL BE TURNED OVER TO OWNER. **INSTALL NEW SWITCHES.**
 - 6 RETROFIT CORRIDOR LIGHTING WITH NEW FIXTURES SHOWN. RECONNECT TO EXISTING SWITCHES.
 - 7 EXISTING PANEL REFINISHED. INSTALL NEW BUS BARS, CIRCUIT BREAKERS, MAIN BREAKER, ETC., IN EXISTING CAB.
 - 8 INSTALL NEW FIXTURES ON EXISTING CAB.
 - 9 INSTALL NEW LIGHT FIXTURES AND CONNECT TO EXISTING WIRING. REMOVE EXISTING FIXTURES AND DEMO OFF OUTLETS. INSTALL NEW LIGHT SWITCHES.
 - 10 CUT AND PATCH EXISTING WALLS TO CONCEAL ELECTRICAL WORK WHERE REQUIRED FOR INSTALLATION OF NEW DEVICES.
 - 11 REUSE EXISTING WIRING WHERE POSSIBLE.
 - 12 REPLACE EXISTING DUPLEX OUTLET WITH NEW GFCI TYPE DUPLEX AND COVER PLATE.

(E) PANEL 2				TYPE (E)					
CIRCUIT	WIRING	USE	LOAD TYPE (A)	LOAD TYPE (B)	USE	CIRCUIT	WIRING		
NO.	TYPE		AMPS	VA		NO.	TYPE		
1	4/0	SM. 4/0	3	4	SM. 4/0	1	4/0		
2	4/0	SM. 4/0	3	4	SM. 4/0	2	4/0		
3	4/0	SM. 4/0	3	4	SM. 4/0	3	4/0		
4	4/0	SM. 4/0	3	4	SM. 4/0	4	4/0		
5	4/0	SM. 4/0	3	4	SM. 4/0	5	4/0		
6	4/0	SM. 4/0	3	4	SM. 4/0	6	4/0		
7	4/0	SM. 4/0	3	4	SM. 4/0	7	4/0		
8	4/0	SM. 4/0	3	4	SM. 4/0	8	4/0		
9	4/0	SM. 4/0	3	4	SM. 4/0	9	4/0		
10	4/0	SM. 4/0	3	4	SM. 4/0	10	4/0		
11	4/0	SM. 4/0	3	4	SM. 4/0	11	4/0		
12	4/0	SM. 4/0	3	4	SM. 4/0	12	4/0		
13	4/0	SM. 4/0	3	4	SM. 4/0	13	4/0		
14	4/0	SM. 4/0	3	4	SM. 4/0	14	4/0		
15	4/0	SM. 4/0	3	4	SM. 4/0	15	4/0		
16	4/0	SM. 4/0	3	4	SM. 4/0	16	4/0		
17	4/0	SM. 4/0	3	4	SM. 4/0	17	4/0		
18	4/0	SM. 4/0	3	4	SM. 4/0	18	4/0		
19	4/0	SM. 4/0	3	4	SM. 4/0	19	4/0		
20	4/0	SM. 4/0	3	4	SM. 4/0	20	4/0		
21	4/0	SM. 4/0	3	4	SM. 4/0	21	4/0		
22	4/0	SM. 4/0	3	4	SM. 4/0	22	4/0		
23	4/0	SM. 4/0	3	4	SM. 4/0	23	4/0		
24	4/0	SM. 4/0	3	4	SM. 4/0	24	4/0		
25	4/0	SM. 4/0	3	4	SM. 4/0	25	4/0		
26	4/0	SM. 4/0	3	4	SM. 4/0	26	4/0		
27	4/0	SM. 4/0	3	4	SM. 4/0	27	4/0		
28	4/0	SM. 4/0	3	4	SM. 4/0	28	4/0		
29	4/0	SM. 4/0	3	4	SM. 4/0	29	4/0		
30	4/0	SM. 4/0	3	4	SM. 4/0	30	4/0		
31	4/0	SM. 4/0	3	4	SM. 4/0	31	4/0		
32	4/0	SM. 4/0	3	4	SM. 4/0	32	4/0		
33	4/0	SM. 4/0	3	4	SM. 4/0	33	4/0		
34	4/0	SM. 4/0	3	4	SM. 4/0	34	4/0		
35	4/0	SM. 4/0	3	4	SM. 4/0	35	4/0		
36	4/0	SM. 4/0	3	4	SM. 4/0	36	4/0		
37	4/0	SM. 4/0	3	4	SM. 4/0	37	4/0		
38	4/0	SM. 4/0	3	4	SM. 4/0	38	4/0		
39	4/0	SM. 4/0	3	4	SM. 4/0	39	4/0		
40	4/0	SM. 4/0	3	4	SM. 4/0	40	4/0		
41	4/0	SM. 4/0	3	4	SM. 4/0	41	4/0		
42	4/0	SM. 4/0	3	4	SM. 4/0	42	4/0		
SUB-TOTAL				120	120	SUB-TOTAL			
TOTAL				120	120	TOTAL			

2.04

Job no. 88-142
date 20 JAN 1989
drawn by RLW
checked by CD
copyright 1989

BUILDING 400

8429-400

DR ARCHITECTS PLANNERS INC.
P.O. box 9698 Bakersfield California 93308-9698
31 South real road 93308 (805) 832 8122

C-3132
C-5564
C-6021
C-8702

ROOSEVELT SCHOOL MODERNIZATION

FOR
BAKERSFIELD CITY SCHOOL DISTRICT

INTERSTATE ENGINEERS, INC.
1111 1/2 STREET BAKERSFIELD CALIFORNIA 93308
C. L. HARRIS, P.E. - FLOOR PLAN

4/14