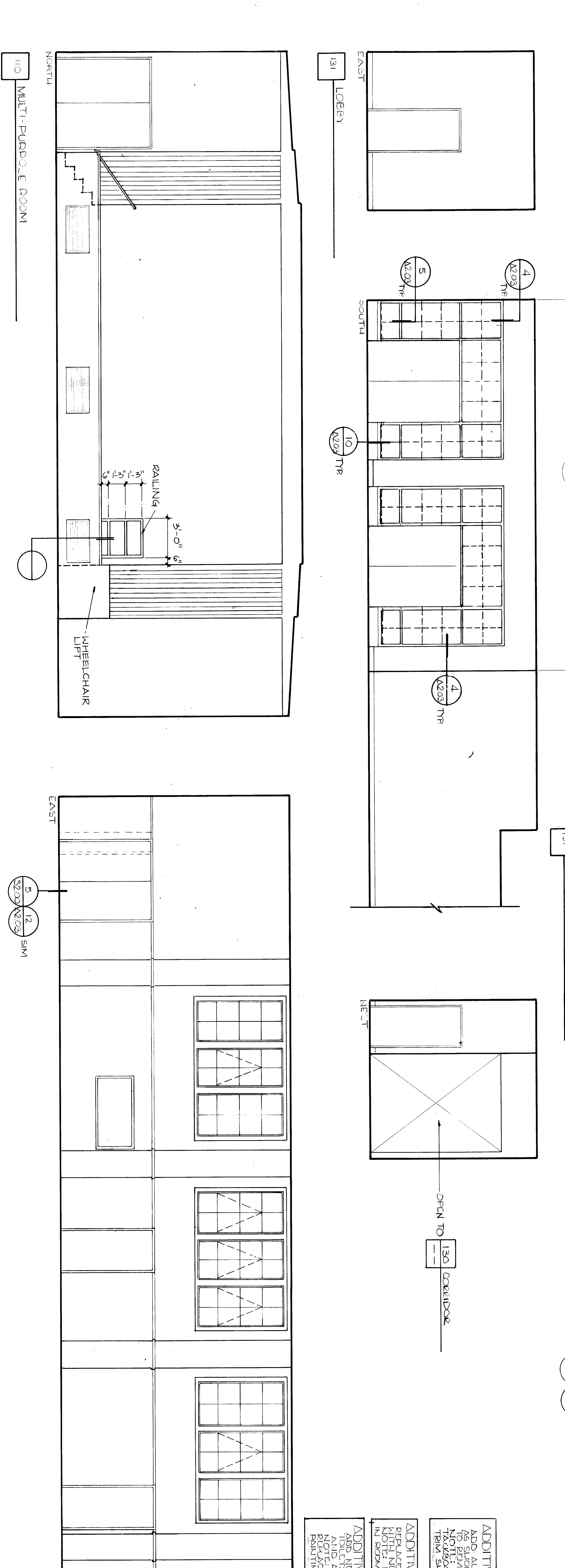
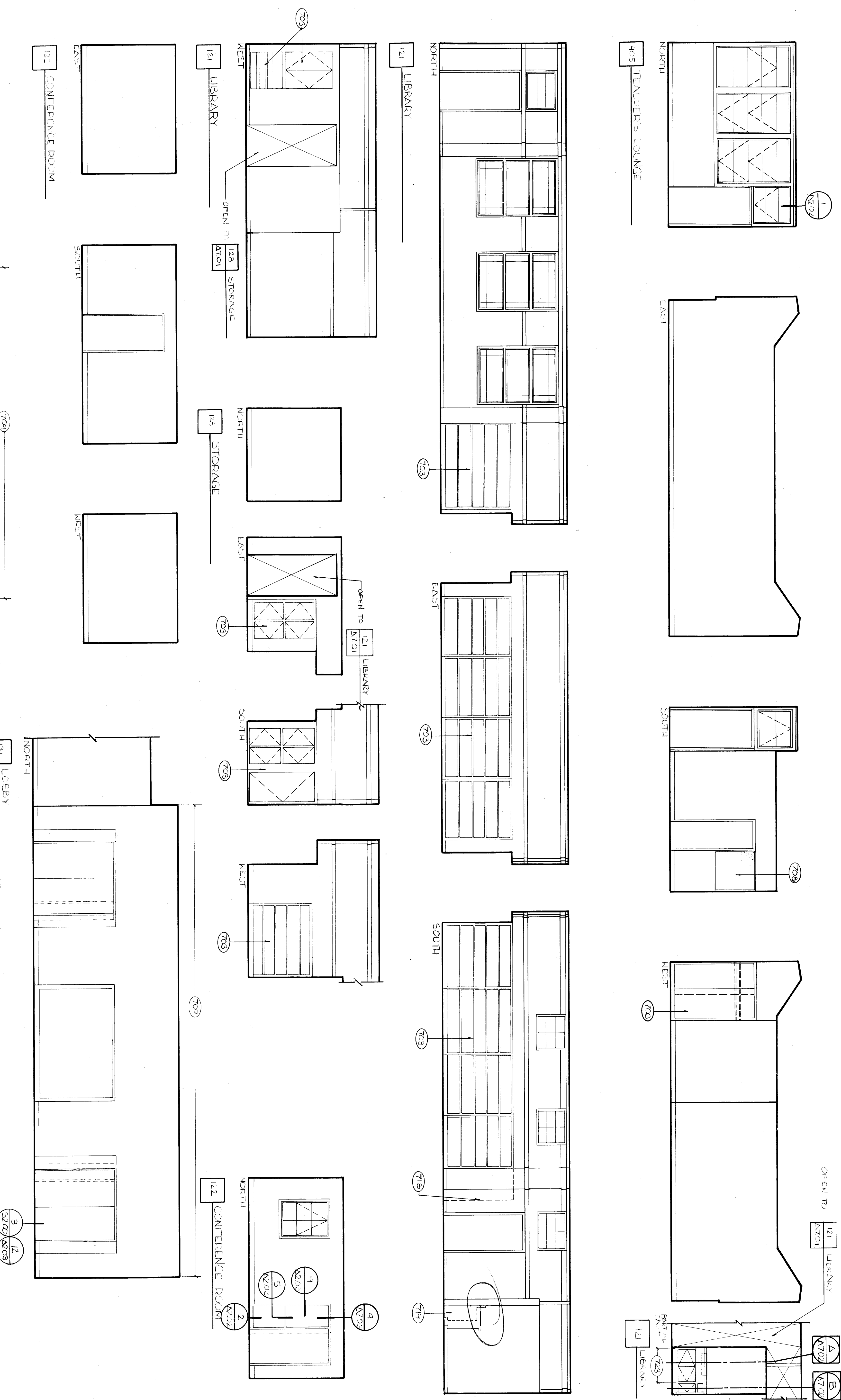


**KEY NOTES**

- A. NOT ALL KEY NOTES ARE BEING SHOWN IN THIS SHEET. SEE OTHER EXISTING SHEETS ALSO.
- B. ALL DAMAGES CAUSED BY REMOVAL WORK SHALL BE REPAIRED TO ORIGINAL CONDITION. MATERIAL, FINISH, TEXTURE AND/OR COLOR OF ORIGINAL SURFACES SHALL BE MATCHED TO ORIGINAL SURFACES.
701. REMOVE (R) EXISTING PARTITION, PLASTER, AND GYPSUM BOARD FROM ROOM TO CALLING TO EXPOSE (E) STUDS.
702. UNIT VENTILATION - SEE MECHANICAL.
703. STRIP (S) FINISH AT CABINET FACE, SHEETS, SINK AND MIRROR (S) FINISH COOKTOP, FRONT OF CABINET ONLY AND SHEETS AS SHOWN.
704. REMOVE (R) EXISTING CABINET UNIT, REMOVE CABINET ONLY AND SHEETS AS SHOWN.
705. CARPENTRY WORK AS FOR MECHANICAL SCHEDULES. CARPENTRY SHALL BE DONE BY LICENSED CARPENTER. REMOVE (R) EXISTING CABINET AS SHOWN.
706. REMOVE (R) MIRROR SCREEN, REMOVE SHEETS AND WALL ADORNMENT.
707. REMOVE (R) GYPSUMBOARD, REPLACE GYPSUMBOARD WITH NEW GYPSUMBOARD AS SHOWN.
708. REMOVE (R) GYPSUMBOARD MIRROR COOKTOP AND REPLACE TACKBOARD AS SHOWN.
709. FINISHER FINISH, FINISH THIS AREA ONLY.
710. TOLLIER PARTITION.
711. LAMINATE EXISTING PAPER TONER DISPENSER AND WASTE RECEPTACLE.
712. REPAIR EXISTING TISSUE WAPER DISPENSER.
713. PARTITION MOUNTED TISSUE WAPER DISPENSER.
714. SURFACE MOUNTED SOAP DISPENSER.
715. GYPSUM BOARD.
716. METAL COYER.
717. 1'-0" X 3'-0" HIDEOUT.
718. REMOVE (R) CABINET SHEETS BOOK SHEETS AND RE-INSTALL (I) BOOK SHEETS ON WALL.
719. REMOVE (R) CABINET SINK WITH CABINET UNIT AS SHOWN.
720. REMOVE (R) GYPSUMBOARD.
721. NO PLASTER WORK (S) MIRROR COOKTOP.
722. CERAMIC TILE.
723. REMOVABLE BASE AT SINK CABINET ONLY 3'-0" HIGH.
724. REMOVE PART OF (S) CABINET AT SINK OR FINISH TO THE HIGHEST VERTICAL STUDS EXPOSED AND PAINT AS SHOWN (S10).
725. MIRROR SCREEN (S10).
726. MAP WALL.
727. GYPSUM BOARD.



**ADDITIVE ALTERNATE NO. 1**  
 ADD ALL TAGS, NOTES AND DIMENSIONS AS SHOWN FOR INTERIOR ELEVATIONS EXISTING. NOTES UNDER THE BASE, SINK AND MIRROR ARE LISTING TO BE REMOVED. FINISH SHALL BE STRIPPED AND PAINTED IN REDS, YELL AND 2X.

**ADDITIVE ALTERNATE NO. 2**  
 REMOVE EXISTING PARTS IN CLASSROOMS. FINISH SHALL BE STRIPPED AND PAINTED IN REDS, YELL AND 2X.

**ADDITIVE ALTERNATE NO. 3**  
 ADD NEW FINISH TO ALL HANDRAILS AND ALL ACCESSORIES. FINISH SHALL BE STRIPPED AND PAINTED IN REDS, YELL AND 2X. REMOVE EXISTING FINISH TO BE STRIPPED AND PAINTED IN REDS, YELL AND 2X.

**ROOSEVELT  
 SCHOOL  
 MODERNIZATION**  
 FOR  
 BAKERSFIELD CITY SCHOOL  
 DISTRICT

**INTERIOR ELEVATIONS**  
 1/4" = 1'-0"

**bfgc architects planners inc.**  
 p.o. box 9898 bakersfield california 93388-9898  
 31 south red road 93309 (805) 832 8122

*DR. ATKINS*  
 C-3132  
 C-8564  
 C-8021  
 C-8702

job no.	88-142
date	20 JAN 1989
drawn by	T. WARREN
chk'd by	SCOTT
copyright	1989

**701**