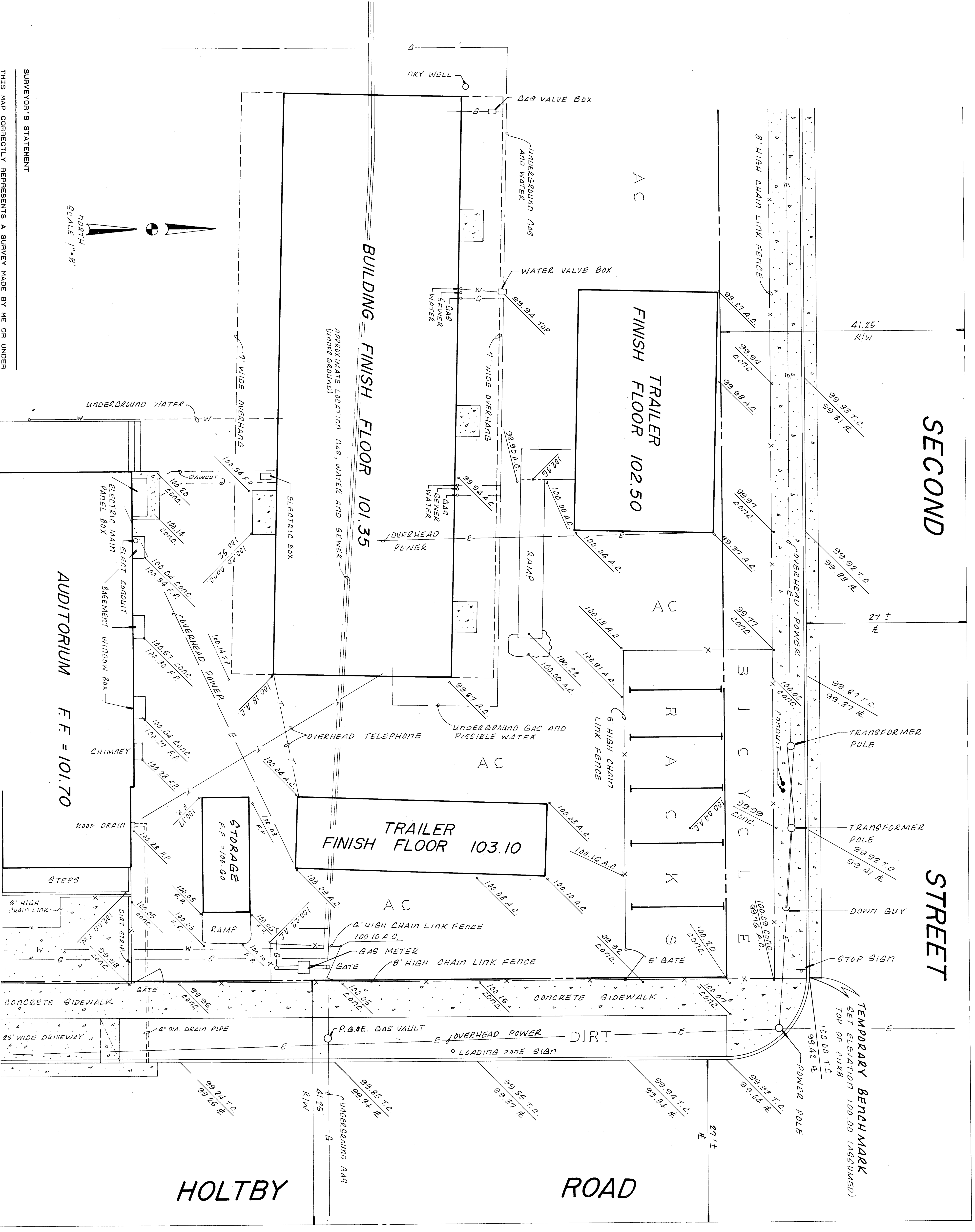


- KEY NOTES**
1. ALL ELEVATIONS ARE BEING USED IN THIS SHEET. SEE OTHER SITE PLANS.
 2. CHAIN LINK FENCE.
 3. TEMPORARY CONSTRUCTION CHAIN LINK FENCE - 6'-0" TALL.
 4. TEMPORARY CONSTRUCTION CHAIN LINK GATE - 6'-0" WIDE.
 5. LINE INDICATES START OF WORK.
 6. CONSTRUCTION STAGING AREA.
 7. TEMPORARY VARIABLE ELEVATIONS LOCATION - PERIOD. NOT PART OF THIS CONTRACT.
 8. MECHANICAL AND ELECTRICAL WELLS - SEE MECHANICAL AND ELECTRICAL DRAWINGS FOR DETAILS.
 9. REQUIRED FOR MECHANICAL AND/OR ELECTRICAL WELLS - SEE MECHANICAL AND ELECTRICAL DRAWINGS FOR DETAILS.
 10. 4" X 4" WELLS, MINIMUM 18" DEEP AT ALL CORNERS AND INTERSECTIONS.
 11. 4" X 4" WELLS, MINIMUM 18" DEEP AT ALL INTERSECTIONS.
 12. 4" X 4" WELLS, MINIMUM 18" DEEP AT ALL INTERSECTIONS.
 13. 4" X 4" WELLS, MINIMUM 18" DEEP AT ALL INTERSECTIONS.
 14. 4" X 4" WELLS, MINIMUM 18" DEEP AT ALL INTERSECTIONS.
 15. 4" X 4" WELLS, MINIMUM 18" DEEP AT ALL INTERSECTIONS.
 16. 4" X 4" WELLS, MINIMUM 18" DEEP AT ALL INTERSECTIONS.
 17. 4" X 4" WELLS, MINIMUM 18" DEEP AT ALL INTERSECTIONS.
 18. 4" X 4" WELLS, MINIMUM 18" DEEP AT ALL INTERSECTIONS.
 19. 4" X 4" WELLS, MINIMUM 18" DEEP AT ALL INTERSECTIONS.
 20. 4" X 4" WELLS, MINIMUM 18" DEEP AT ALL INTERSECTIONS.



SURVEYOR'S STATEMENT

THIS MAP CORRECTLY REPRESENTS A SURVEY MADE BY ME OR UNDER MY DIRECTION IN COMPLIANCE WITH THE REQUIREMENTS OF THE SURVEYING ACT OF 1907 AND THE SURVEYING ACT OF 1933, IN NOVEMBER 1988.

ROGER A. MCINTOSH L.S. 4983 DATE 12-13-88

UNDERGROUND UTILITIES NOTES

NOT ALL UNDERGROUND UTILITIES OR FACILITIES WERE LOCATED OR IDENTIFIED BY ME OR MY ASSISTANTS AND ARE SHOWN ON THIS MAP FROM INFORMATION OBTAINED FROM OUTSIDE SOURCES.

GRADING PLAN

1/8"

Job no.	88-142
date	20 JUN 1989
drawn by	T.W. BIERER
checked by	SCOTT
copyright	1989

dfgc architects planners inc.
 P.O. box 9898 Bakersfield California 93398-9898
 51 South road road 93309 (805) 832 8122

DFGCK
 C-3132 C-4564 C-8021 C-8702

ROOSEVELT SCHOOL MODERNIZATION

FOR
 BAKERSFIELD CITY SCHOOL DISTRICT

GRADING PLAN

114