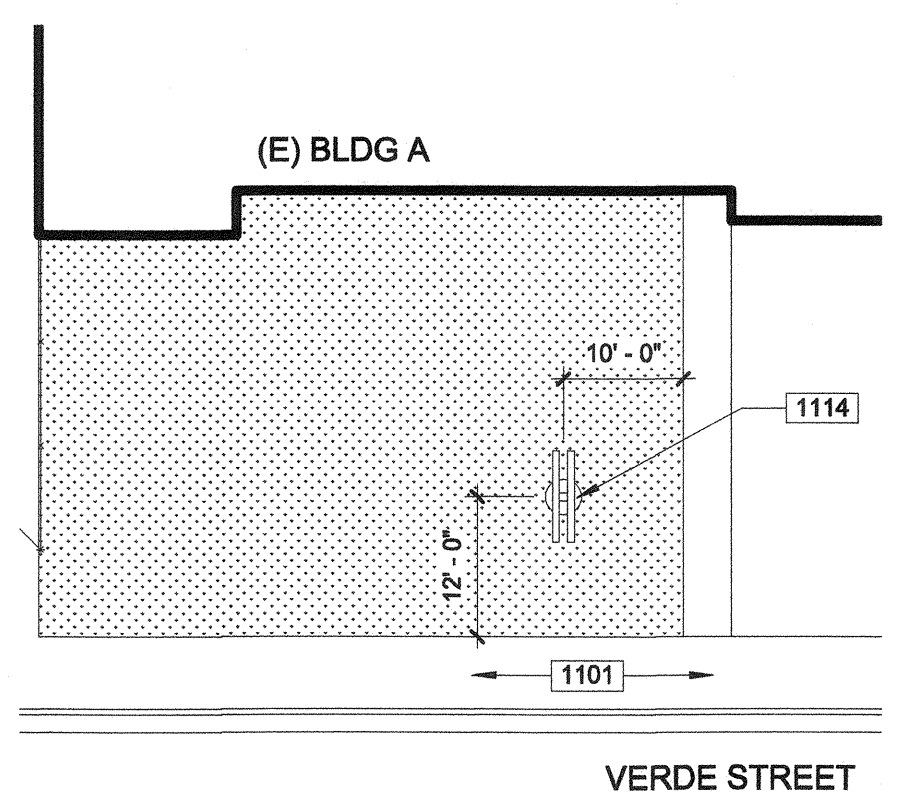


1 OVERALL SITE PLAN - ROOSEVELT ELEMENTARY SCHOOL



2 PARTIAL SITE PLAN

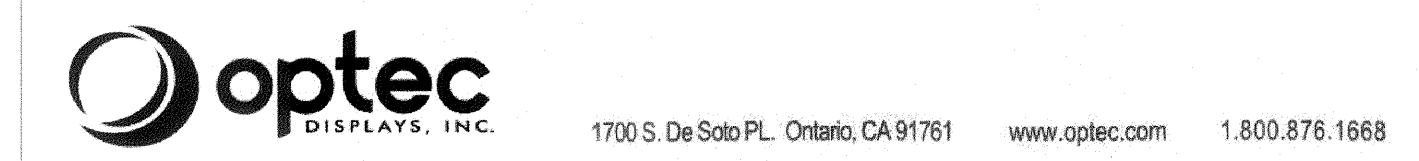
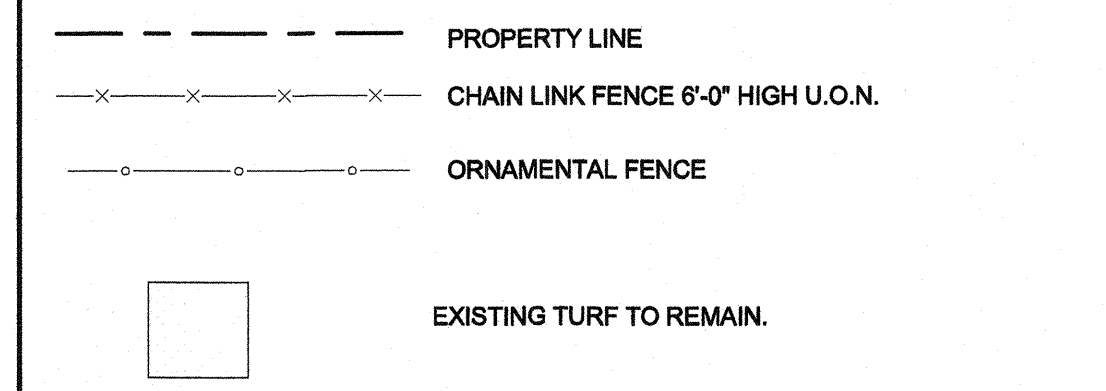
1000-GENERAL NOTES

- REFER TO ELECTRICAL DRAWINGS FOR UNDERGROUND UTILITIES.
- PRIOR TO ANY UNDERGROUND SITE WORK, VERIFY LOCATION OF ALL EXISTING UTILITIES WITH UNDERGROUND SERVICE ALERT (U.S.A.).
- CONTRACTOR SHALL REPLACE IN KIND ANY EXISTING IMPROVEMENTS DAMAGED BY DEMOLITION OR CONSTRUCTION ACTIVITIES.

1100 - KEYNOTES

- 1101 (E) CONCRETE/A.C. WALK TO REMAIN.
- 1114 PROVIDE POLE MOUNTED MARQUEE SIGN. VERIFY WITH DISTRICT FOR EXACT LOCATION AND ORIENTATION. SEE STRUCTURAL DRAWINGS FOR ADDITIONAL INFORMATION.

LEGEND



Date: 06/08/2017

Rusty Taylor
Sign Solutions of California
332 E. Norris Rd Suite 7
Bakersfield CA 93308

Projects:

- Evergreen Elementary - 2600 Rose Marie Dr., Bakersfield, CA
- Stella Hills Elementary - 3800 Jewett Ave., Bakersfield, CA
- Thorner Elementary - 5501 Thorner St., Bakersfield, CA
- Roosevelt Elementary - 2324 Verde St., Bakersfield, CA
- Harris Elementary - 4110 Gamsey Ln, Bakersfield, CA
- William Penn Elementary - 2201 San Emidio St., Bakersfield, CA

The EMC Boards sold for this project are designed and built to 2016 CBC at 150mph w/ 3 sec. gust wind load with an Exposure C.

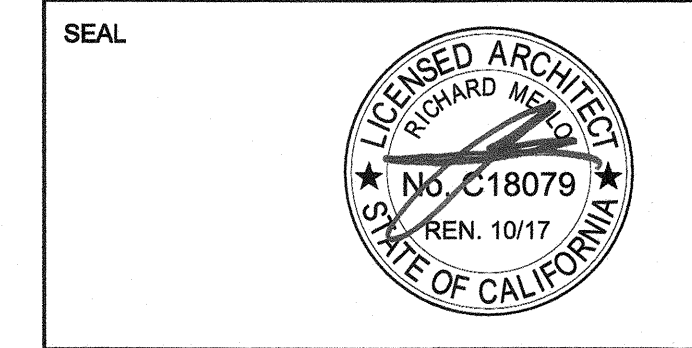
Sincerely

George Lin
Optec Displays Inc.
1700 S De Soto PL
Ontario, CA 91761

PRIME CONSULTANT

ARCHITECTURE PLANNING

IBI San Luis Obispo
4119 Broad Street, Suite 210
San Luis Obispo, CA 93401
805.546.0433 fax: 805.546.0504



COPYRIGHT:
Any reproduction or distribution for any purpose other than authorized by IBI Group is forbidden.

COPYRIGHT 2017 IBI GROUP

REVISIONS

NO.	DATE	APPRD.	DESCRIPTION

CONSULTANT

AGENCY INFORMATION:

AGENCY TRACKING NO. 63321-271
FILE NO. 15-6

IDENTIFICATION STAMP
DIV. OF THE STATE ARCHITECT
OFFICE OF REGULATION SERVICES

03-118198
AC: FR, FL, SS, A
DATE: OCT 25 2017

BAKERSFIELD CITY SCHOOL DISTRICT

ROOSEVELT E.S. - MARQUEE SIGN
2324 VERDE ST., BAKERSFIELD, CA 93304

OPSC or OSHPD PROJ. NO:

PROJECT NO:	17148.000
DRAWN BY:	rRr
CHKD BY:	RM
ISSUE DATE:	10/25/2017

SHEET TITLE

OVERALL & PARTIAL SITE PLANS

SHEET NUMBER

A1100

CONSTRUCTION DOCUMENTS

PLOT DATE: 10/17/2017 10:17:06 AM C:\Users\Ruben.Ruiz\Documents\REV12016\ATV_2017-03-23_ROOSEVELT.V2016_Ruben.Ruiz.rvt