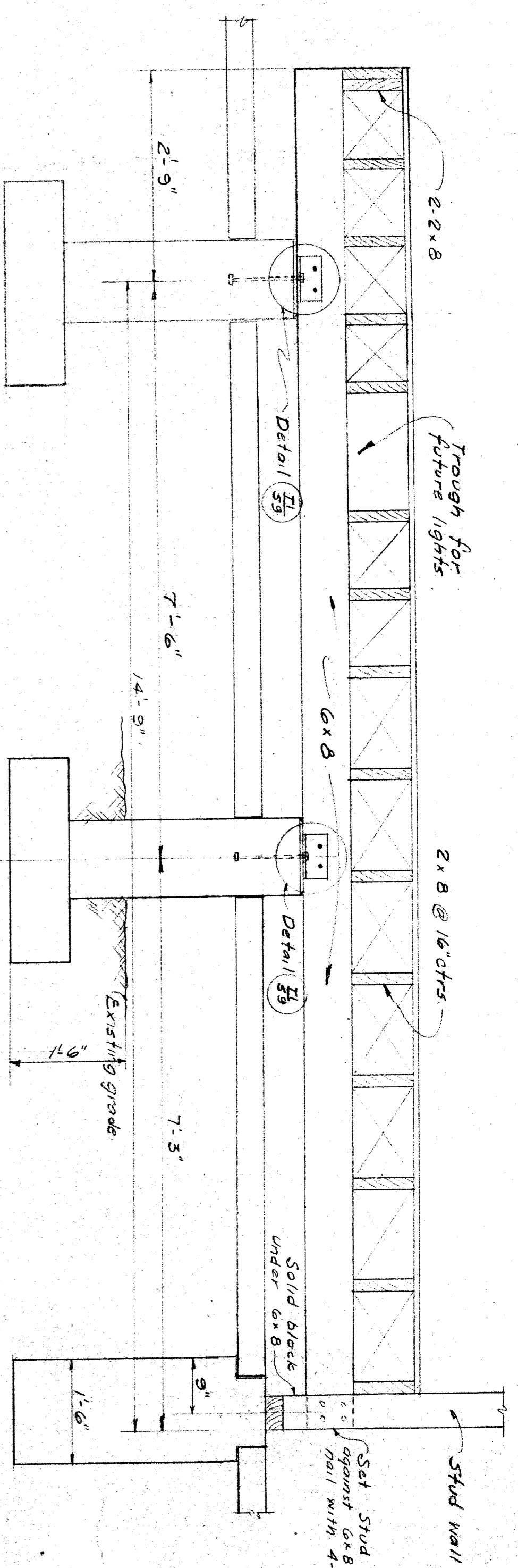
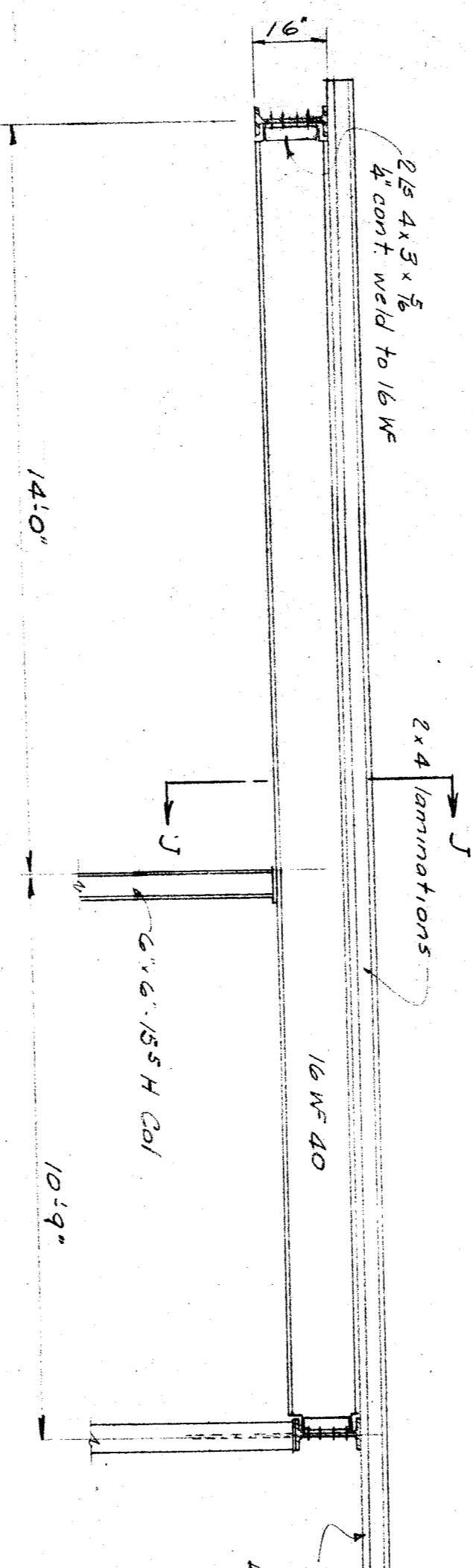


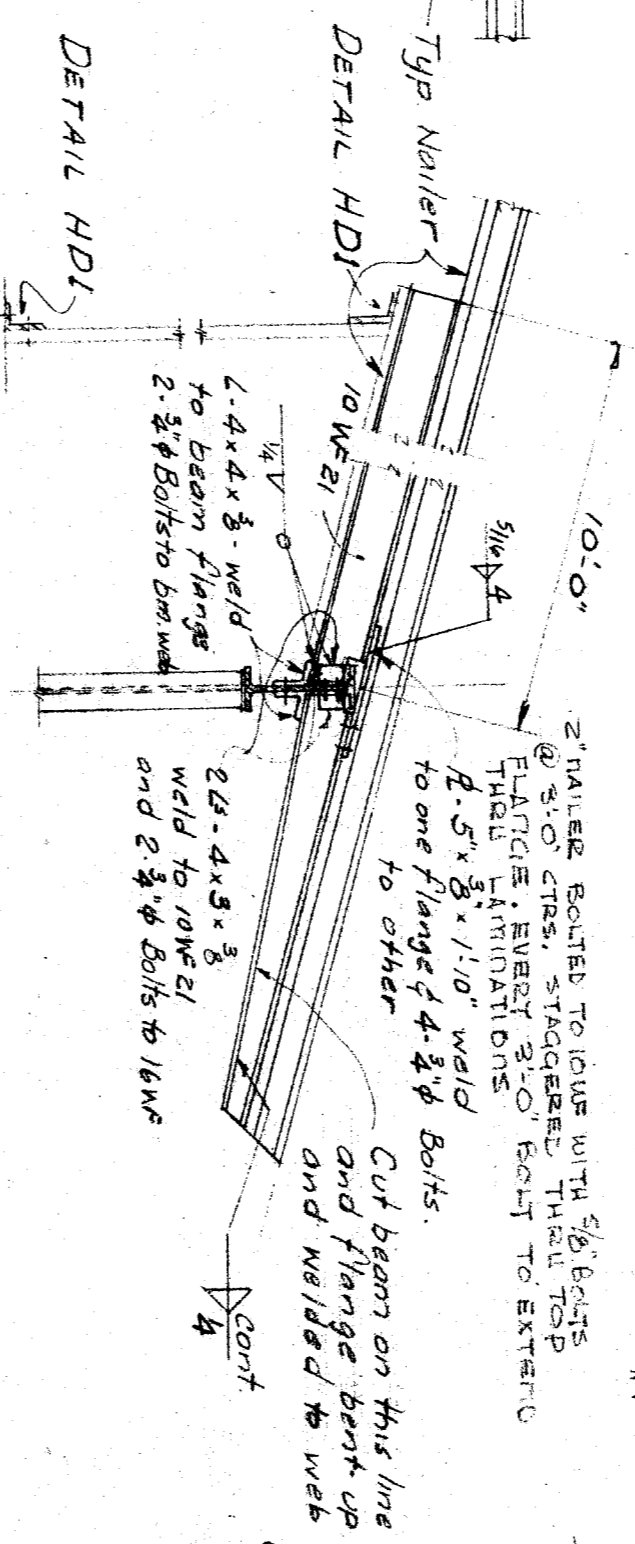
SECTION G-G
Scale: 3/8" = 1'-0"



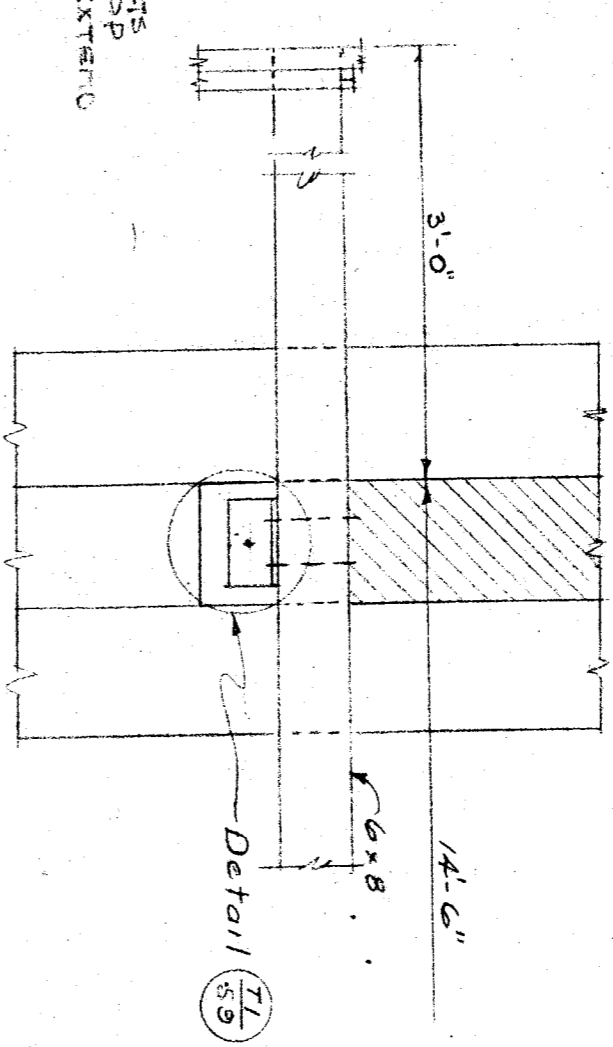
SECTION R-R SEE SH. S-2
Scale: 3/8" = 1'-0"



SECTION H-H
Scale: 3/8" = 1'-0"

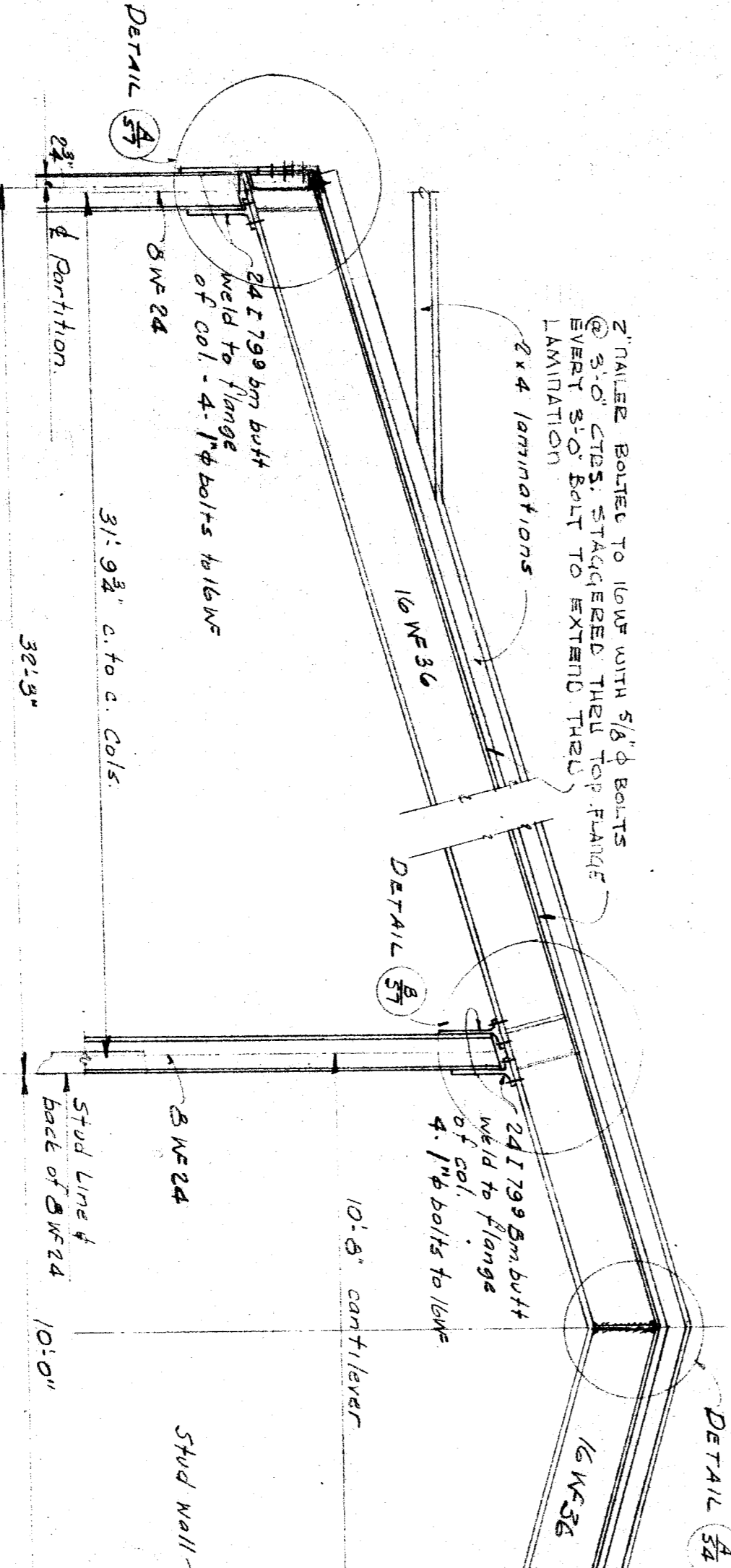
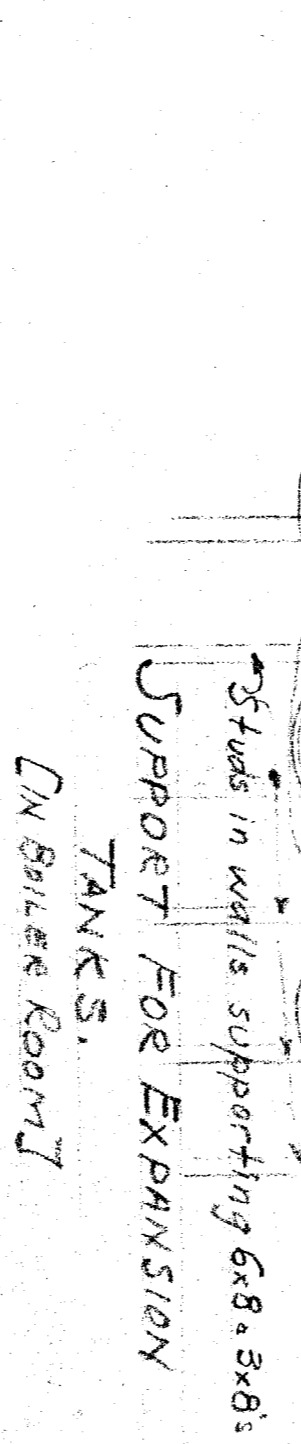


SECTION J-J
Scale: 3/8" = 1'-0"

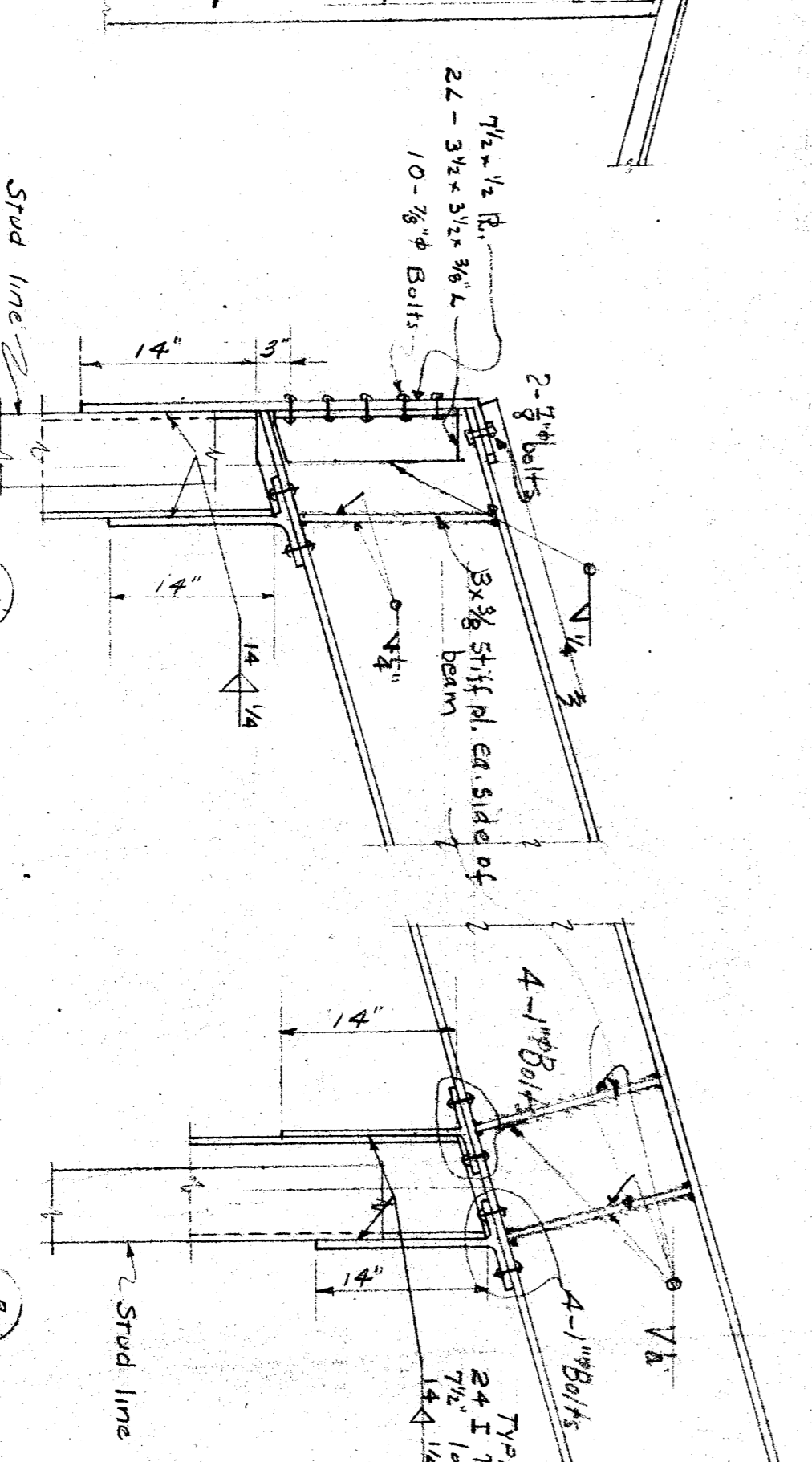


PLAN DETAIL
6x8 Platform Girder @ Brick Wall
Scale 3/8" = 1'-0"

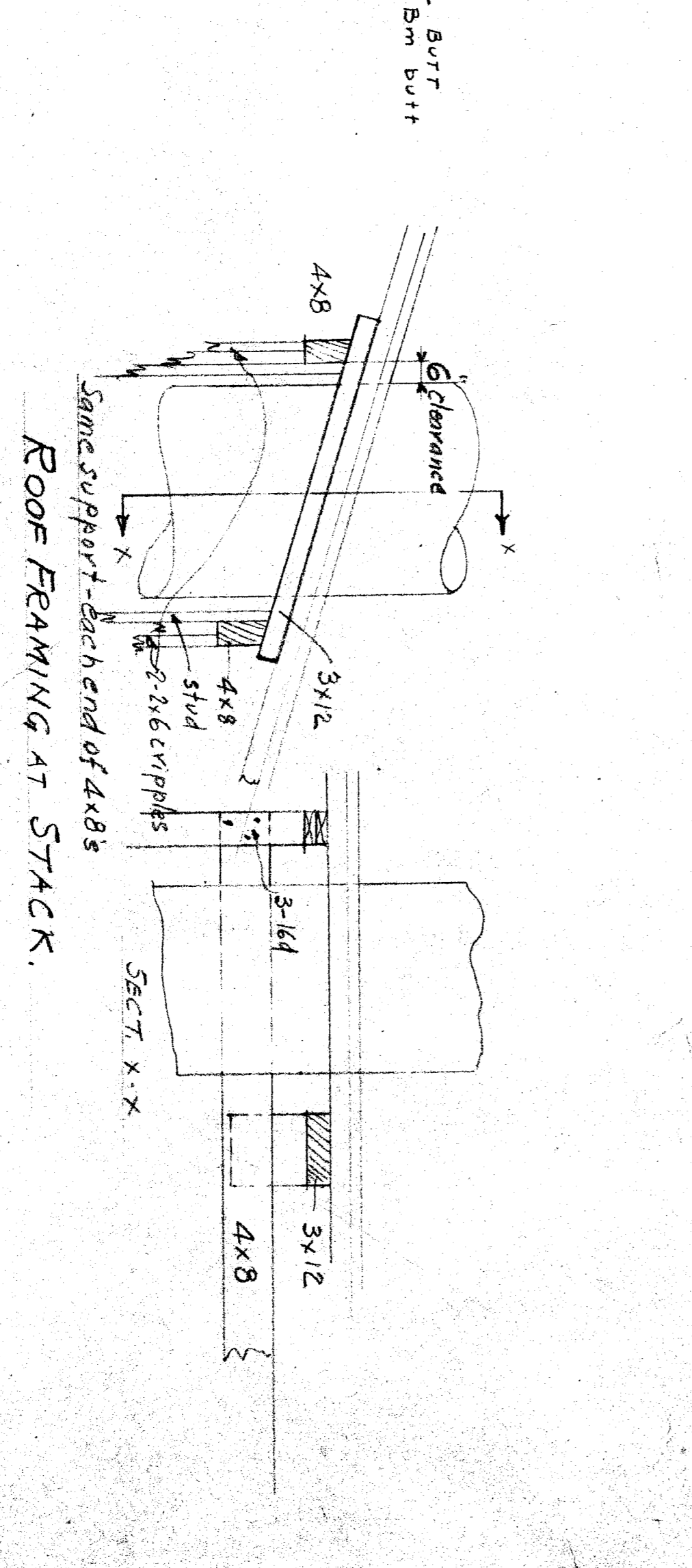
TYPICAL
DETAIL EACH END OF PLATFORM
Scale 3/8" = 1'-0"



SECTION K-K
Scale: 3/8" = 1'-0"



DETAIL A
DETAIL B
Scale: 1/2" = 1'-0"



ROOF FRAMING AT STACK.

PROJECT NO. 2-54 DRAWN BY: _____ CHECKED BY: _____ DATE: 2-23-24 SHEET S7		MEMBER AMERICAN INSTITUTE OF ARCHITECTS 3601 STOCKDALE HIGHWAY BAKERSFIELD, CALIFORNIA 29285 REGISTRATION C-1128		HAROLD B. HANWILL CONSULTING CIVIL ENGINEER 417 MARKET ST. SAN FRANCISCO		HANDED BY: <i>H. B. Hanwille</i> SECTIONS G, H, J, K & R. DETAILS. WILLIAM PERIN SCHOOL.		DIVISION OF ARCHITECTURE 1043 MARKET STREET SAN FRANCISCO, CALIFORNIA		BOARD OF EDUCATION PRES. _____ SEC. _____		531 19 239 3-11-54 <i>Paul R. Campbell</i>	
---	--	---	--	--	--	---	--	---	--	---	--	---	--