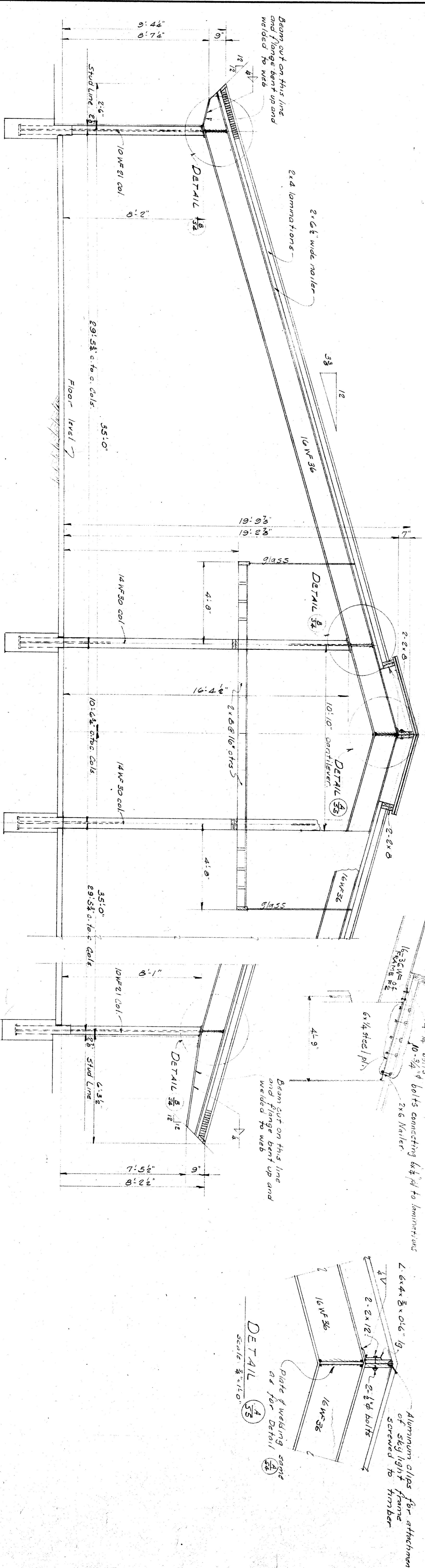


SECTION D - STEEL FRAME F3
 FRAME F3A SAME AS F3
 EXCEPT DETAIL (37) IS SUBSTITUTED FOR (38)

Scale: 3/8" = 1'-0"

SECTION D - STEEL FRAME F4



SECTION C - STEEL FRAME F2

Scale: 3/8" = 1'-0"

STEEL FRAME F2A

FRAME F2A SAME AS F2 EXCEPT OVERHANG IS 6'-3 1/2" INSTEAD OF 2'-6"

5-81 19 3-11-54 Alan K. Campbell	DIVISION OF ARCHITECTURE 1101 CALIFORNIA STREET SAN FRANCISCO 4, CALIF.	BOARD OF EDUCATION DISTRICT 1 SAN FRANCISCO	SECTIONS D & E SECTION C WILLIAM PENN SCHOOL	HAROLD E. HAMMILL CONSULTING CIVIL ENGINEER 491 MARKET ST. SAN FRANCISCO	WHITNEY BIGGAR ARCHITECT MEMBER AMERICAN INSTITUTE OF ARCHITECTS 3601 STOCKDALE HIGHWAY BAKERSFIELD, CALIFORNIA 29285 REGISTRATION C-1128
PROJECT NO. 2-54 DRAWN BY: [Signature] CHECKED BY: [Signature] DATE: 2-23-54 SHEET 55 OF 55					