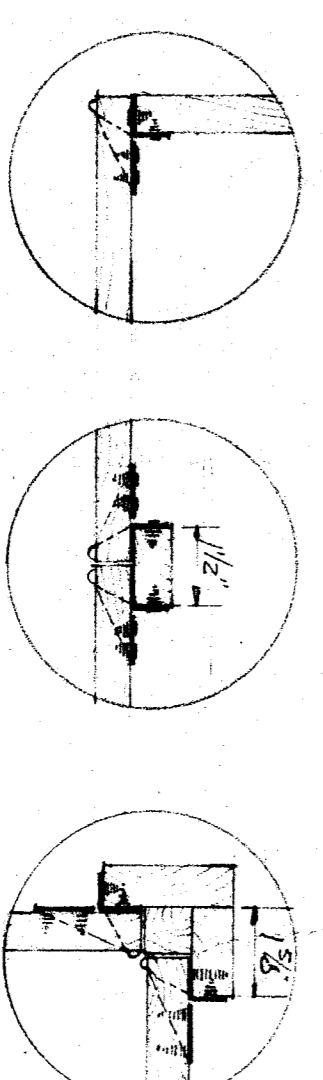
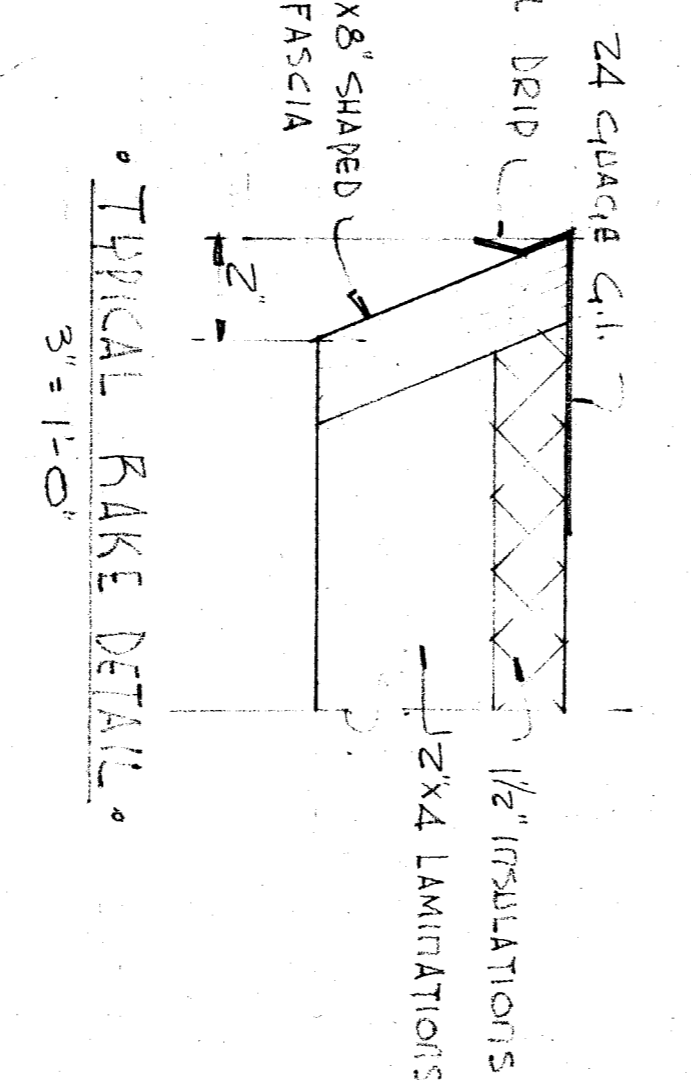
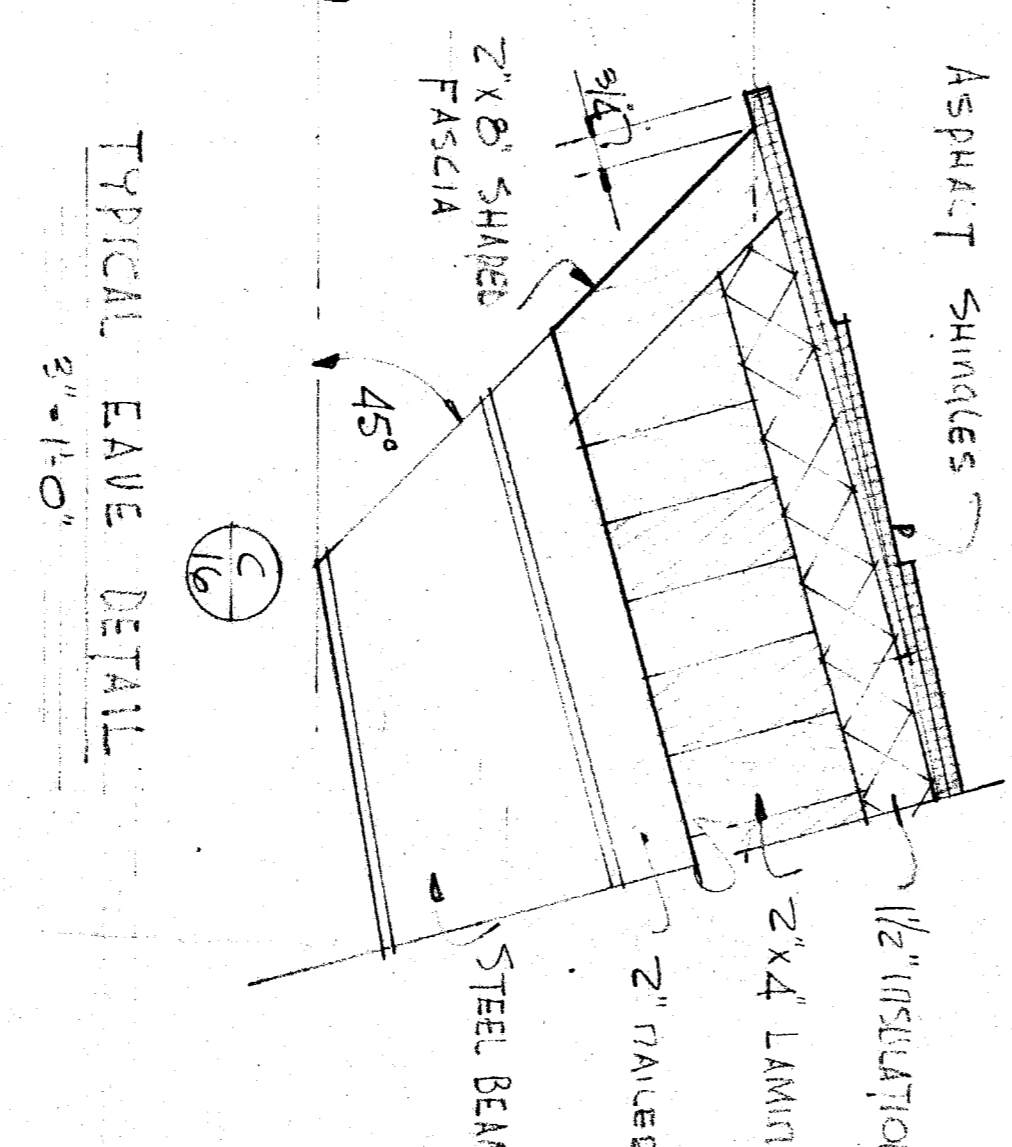


NOTE: THIS IS A TYPICAL OF CLASSROOMS 16, 17, 19, 20, 21, 22, 23, 24, 25 & KINDERGARTEN 41



CABINET JAMB DETAILS TYPICAL FOR ALL CABINET WORK.

S.E.E. SECTION A-A. Assume for TYPICAL LOCATION.

531  
19 3-11-54  
W. La. Biggar

DIVISION OF ARCHITECTURE  
STATE OF CALIFORNIA  
ARCHITECTURAL BOARD  
APPROVED MAY 10 1954  
W. La. Biggar

BOARD OF EDUCATION  
PRES.  
SEC.

CLASS ROOM SECTION A-A  
WILLIAM PENN SCHOOL

W. La. Biggar  
WHITNEY BIGGAR ARCHITECT  
MEMBER AMERICAN INSTITUTE OF ARCHITECTS  
3601 STOCKDALE HIGHWAY  
BAKERSFIELD, CALIFORNIA  
29285 REGISTRATION C-1128

PROJECT NO. 2-54  
DRAWN BY  
CHECKED BY  
DATE 2-18-54  
SHEET  
OF 116