

NOTE:  
COVER PLYWOOD OR FIBERGLASS ON UNDERSIDE OF OVERHANG

DETAIL 1 (S7)  
FASCIA @ OVERHANG

NOTE:  
COLUMN TOP CASTING & SOCKET - SEE SHEET #12 FOR CONNECTION DETAILS

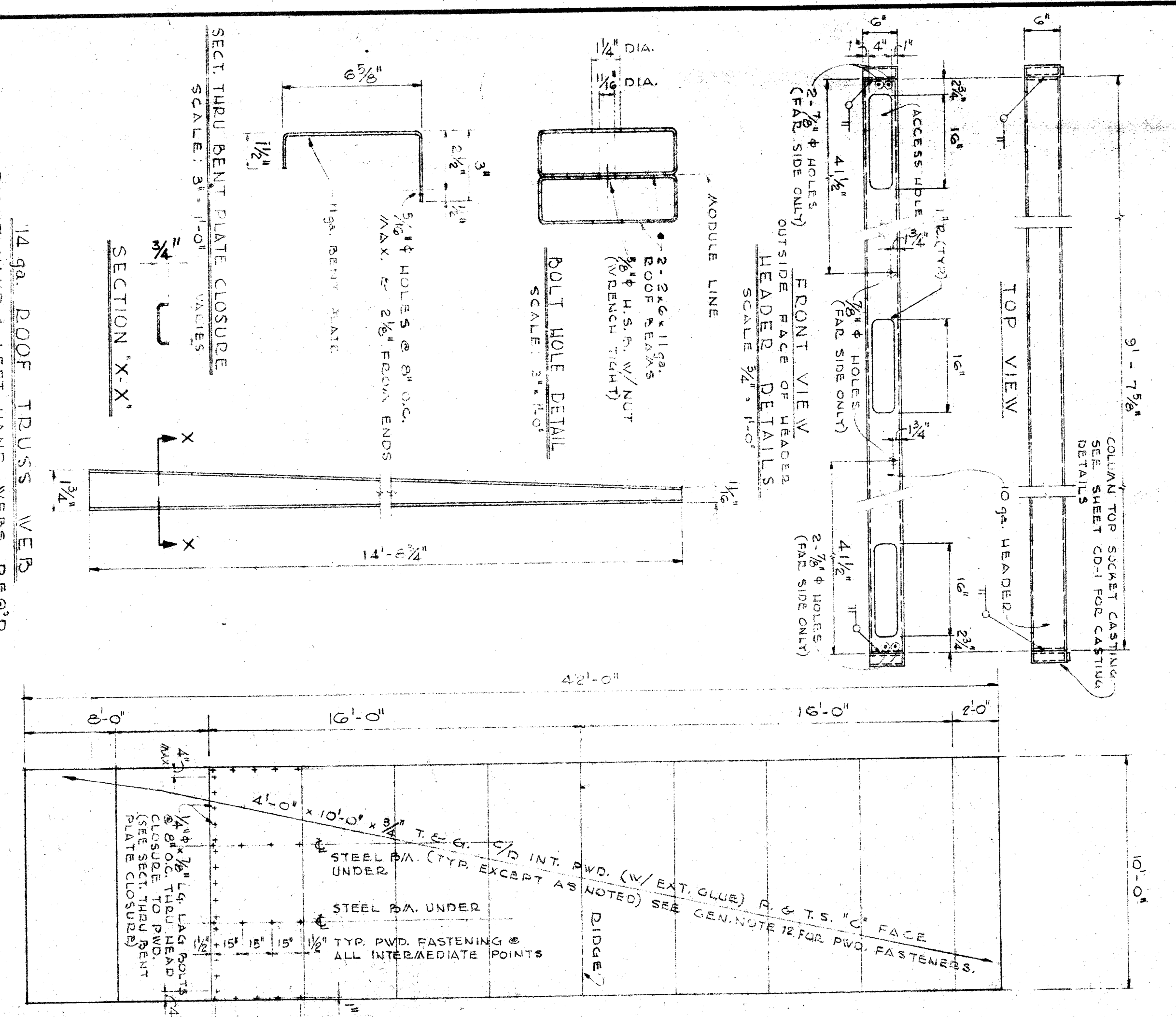
DETAIL 2 (S7)  
ACCESS HOLES TO HAVE 4\"/>

DETAIL 3 (S7)  
HEADER @ INTERMEDIATE ROOF BEAM

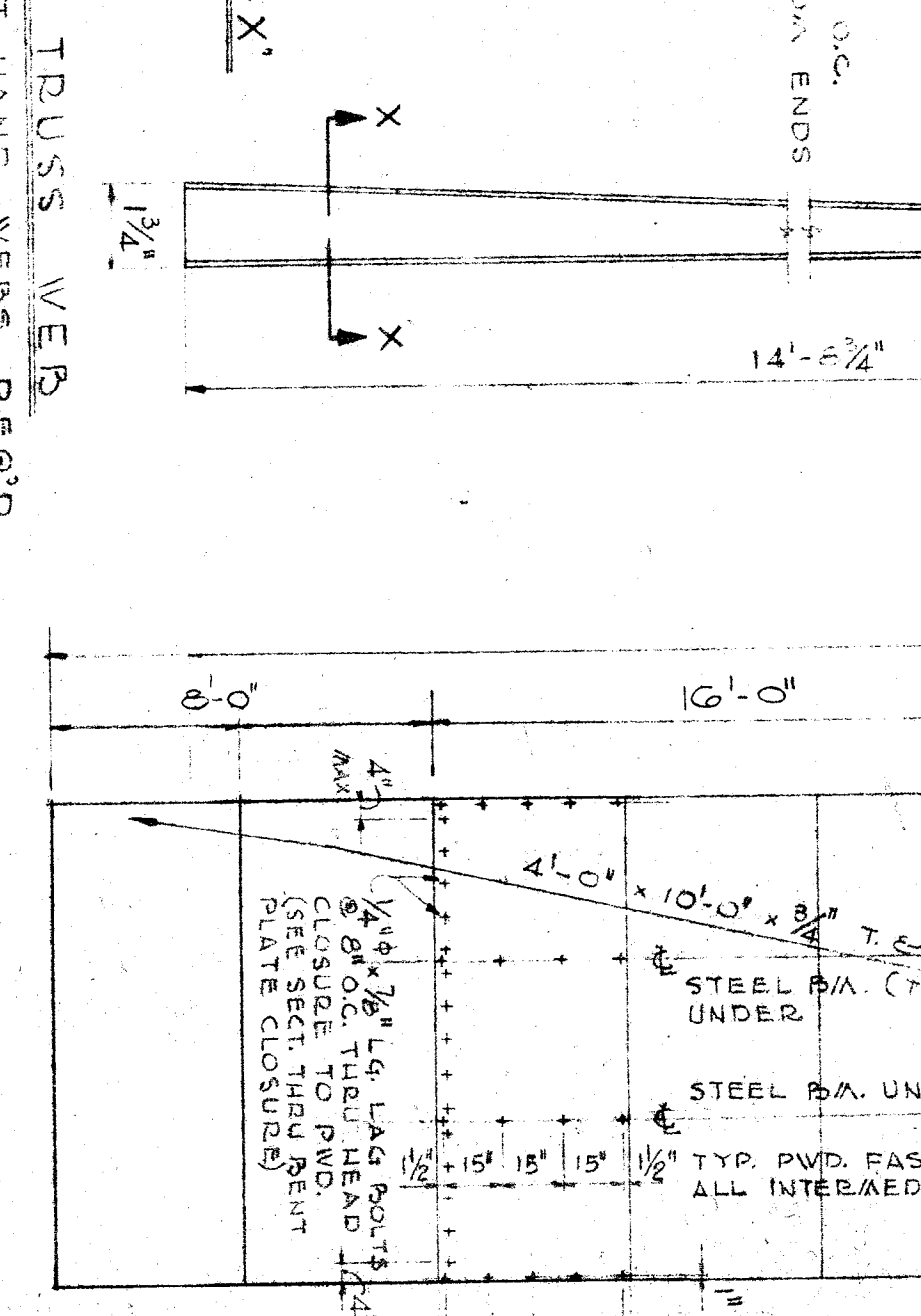
DETAIL 4 (S7)  
ROOF TRUSS WEB @ RIDGE

DETAIL 5 (S7)  
ROOF TRUSS @ MODULE LINE

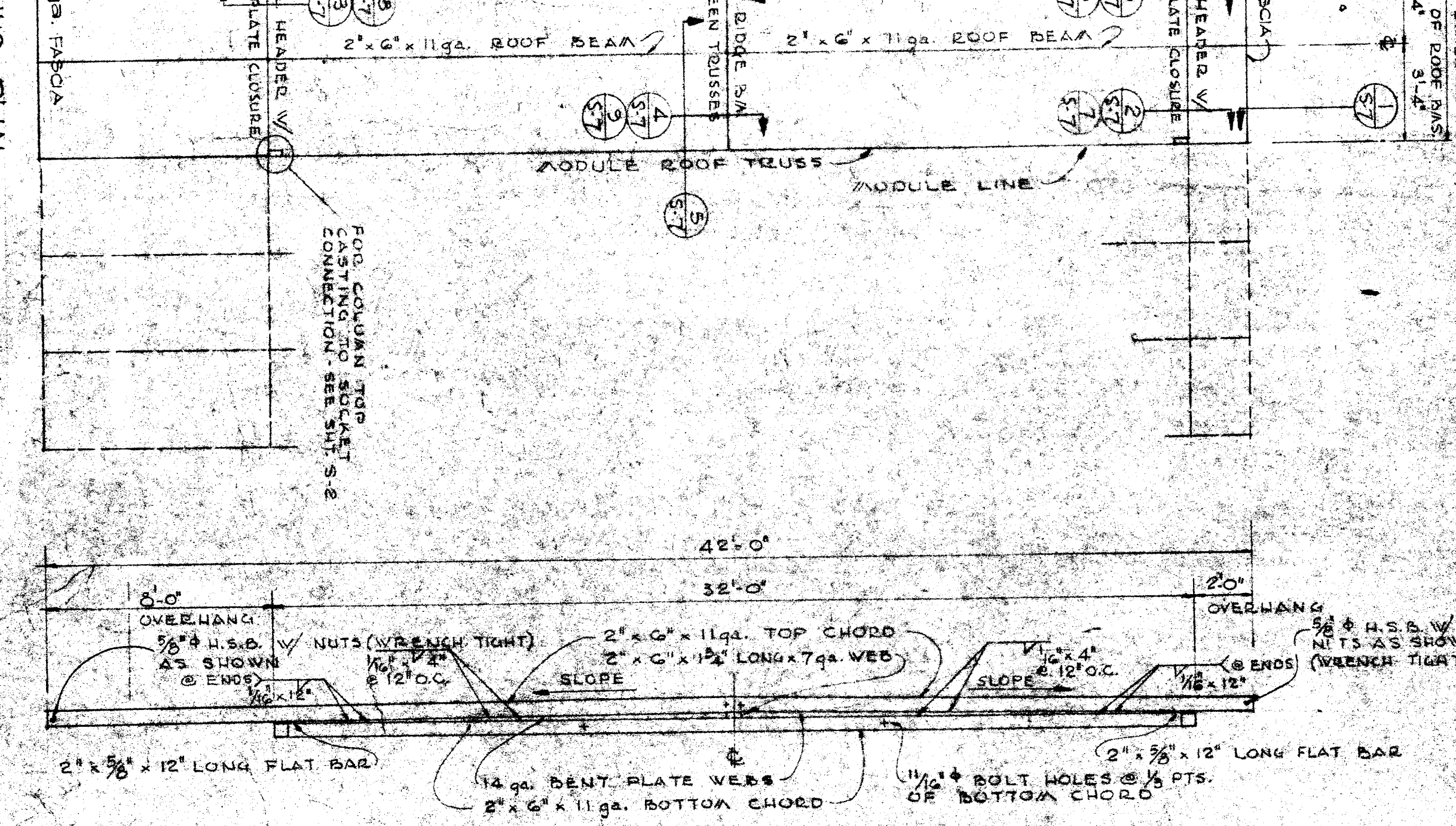
DETAIL 6 (S7)  
ROOF TRUSS @ END MODULE WITH SLOPE



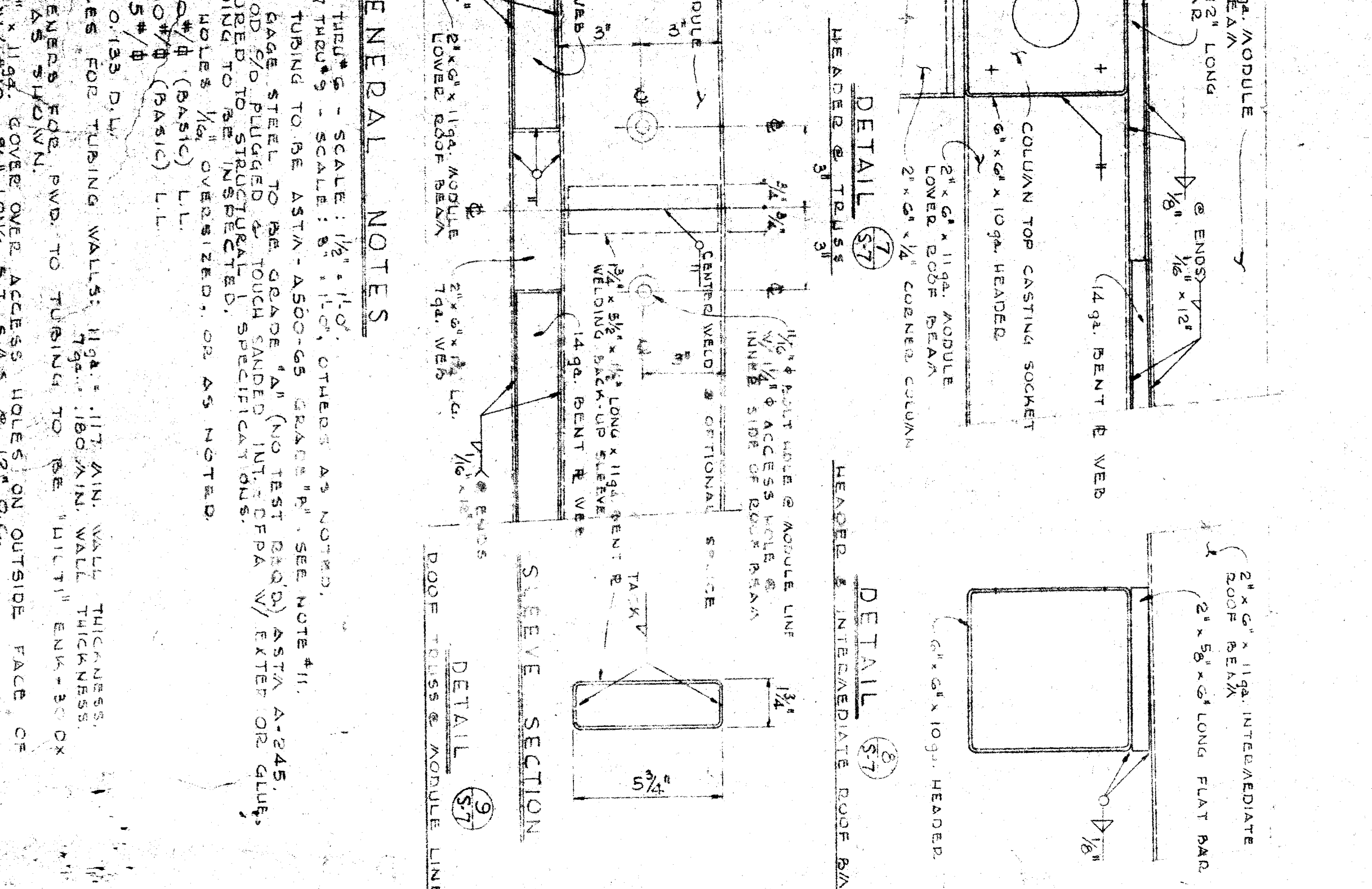
FRONT VIEW W/ OUTSIDE FACE OF HEADER DETAILS  
SCALE: 3/4\"/>



SECTION 'X-X'  
SCALE: NONE  
RIGHT HAND & LEFT HAND WEBS DET'D.



ELEVATION - MODULE ROOF TRUSS  
SCALE: 1/2\"/>



- GENERAL NOTES**  
SCALE: 1/2\"/>
  1. DETAILS #1 THRU #5 - SCALE: 1/2\"/>

REVISIONS		APPROVED BY	STATE FIRE MARSHALL	APPROVED BY	OFFICE OF ARCHITECTURE & CONSTRUCTION
NO.	DESCRIPTION	DATE			

14ga ROOF TRUSS WEB		APPROVED BY	
SCALE: NONE			
ROOF PLYWOOD LAYOUT		APPROVED BY	
SCALE: 1/4\"/>			

14ga ROOF TRUSS WEB		APPROVED BY	
SCALE: NONE			
ROOF PLYWOOD LAYOUT		APPROVED BY	
SCALE: 1/4\"/>			

ROOF FRAMING PLAN		APPROVED BY	
SCALE: 1/4\"/>			

GENERAL NOTES		APPROVED BY	
SCALE: 1/2\"/>			

PROJECT: RELOCATABLE BUILDING		DATE: 12-14-1971	SCALE: AS NOTED
DRAWN BY: CALESTRA		CHECKED BY: CALESTRA	
PROJECT NO. 5022			
DRAWING NO. 5-7			

*Handwritten signature and date: CALESTRA 12/14/71*

ERSLER ELEM. SCHOOL  
WILLIAM PENN. ELEM. SCHOOL  
BAKERSFIELD CITY SCH. DIST.  
BAKERSFIELD CALIFORNIA  
RELOCATABLE BUILDING