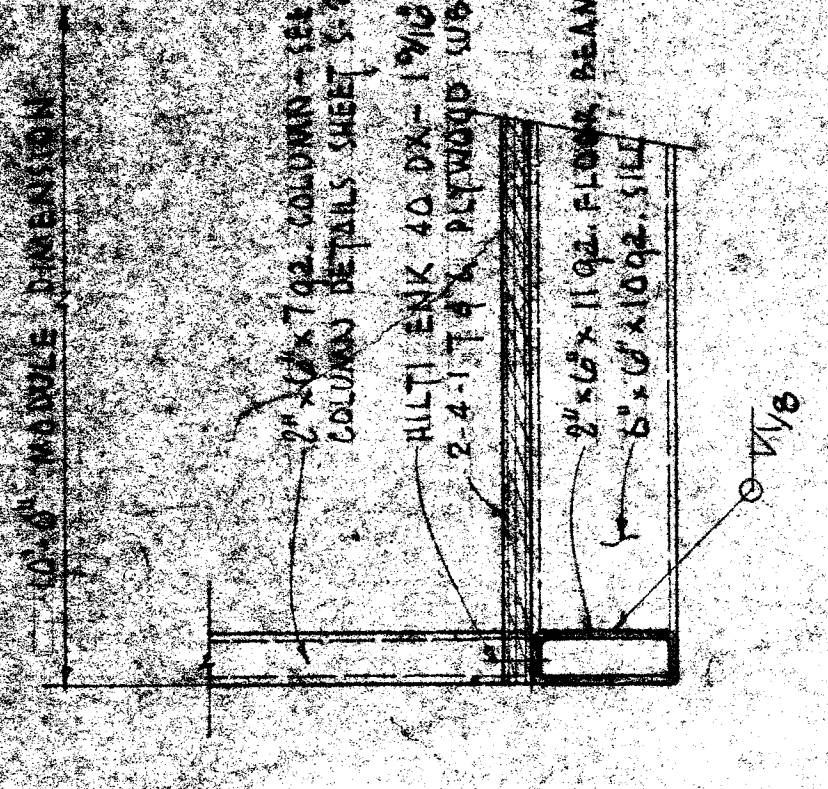
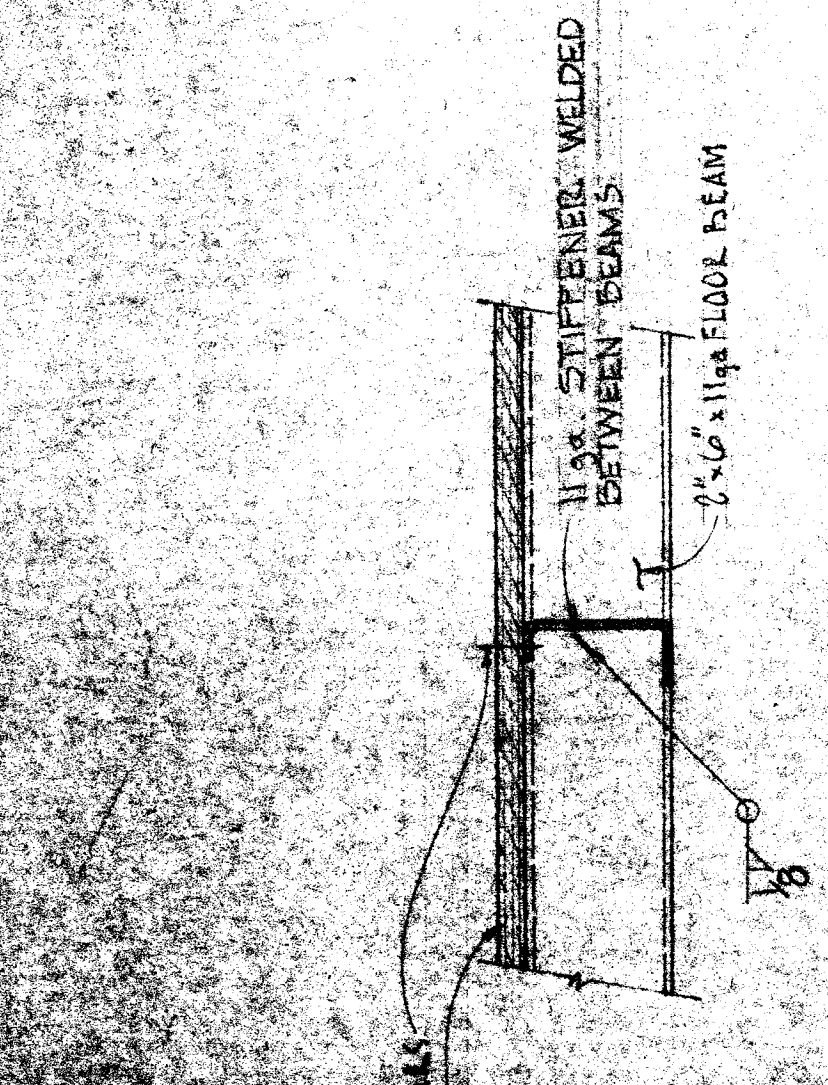


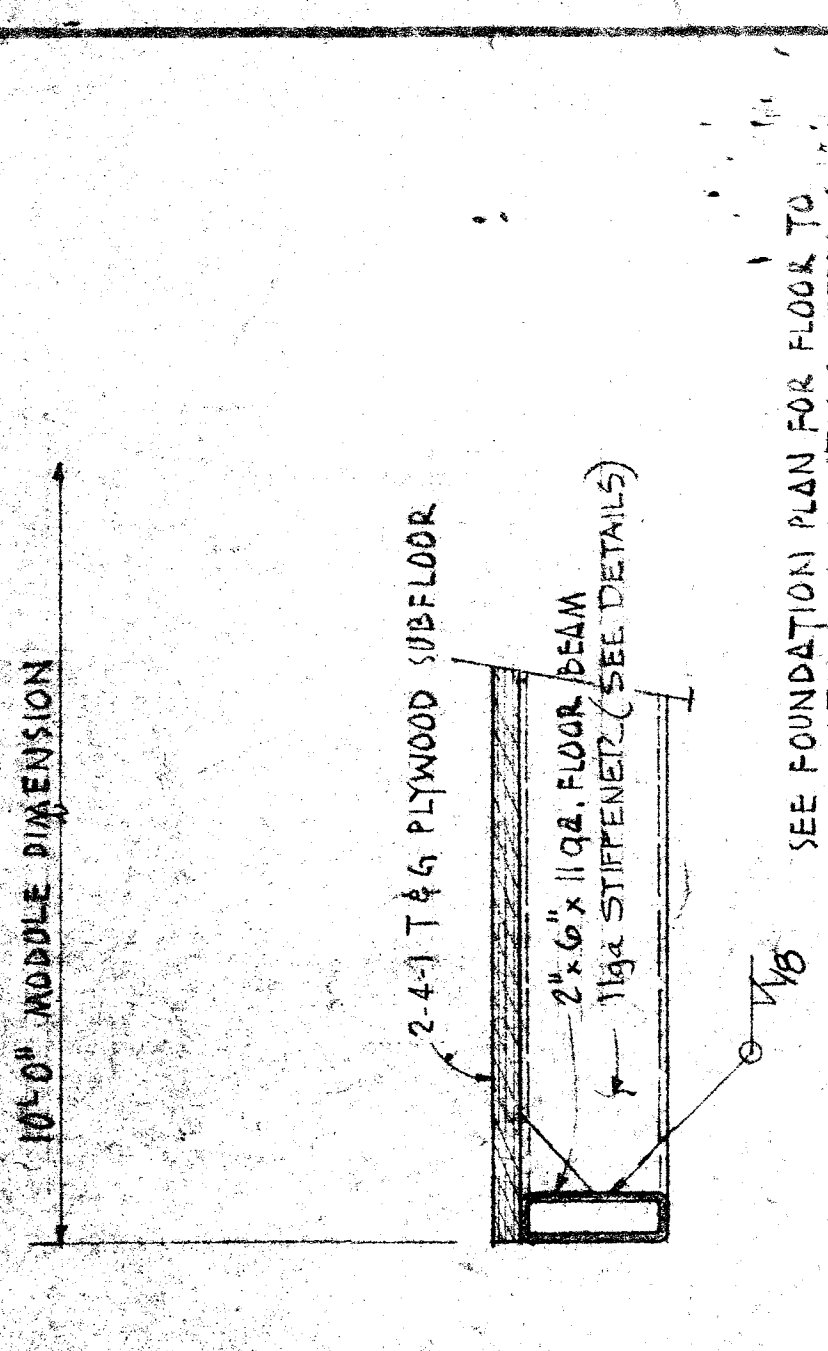
**DETAIL (1/3.3)**  
SILL @ MODULE LINE FLOOR BEAM



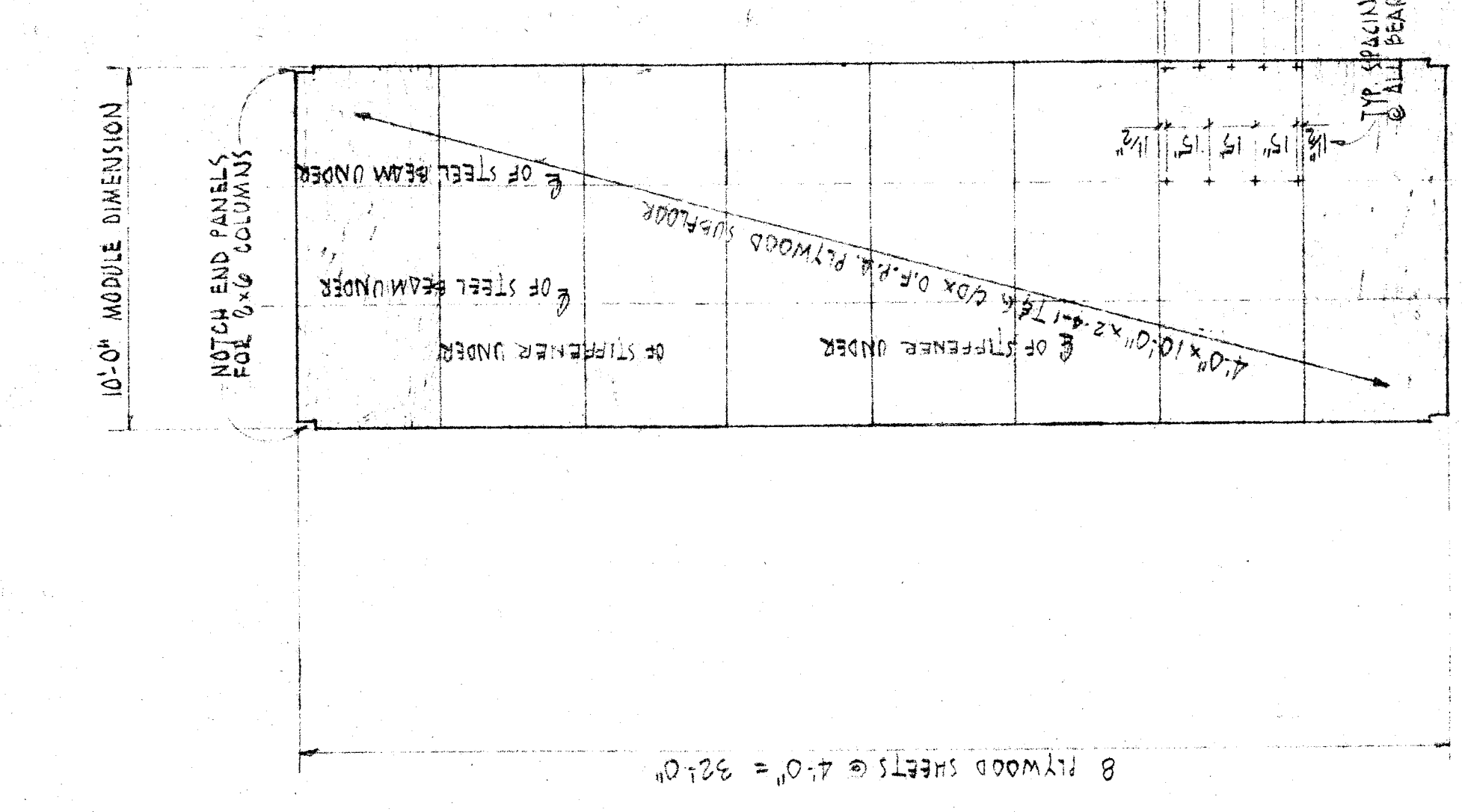
**DETAIL (2/3.3)**  
SILL @ INTERMEDIATE FLOOR BEAM



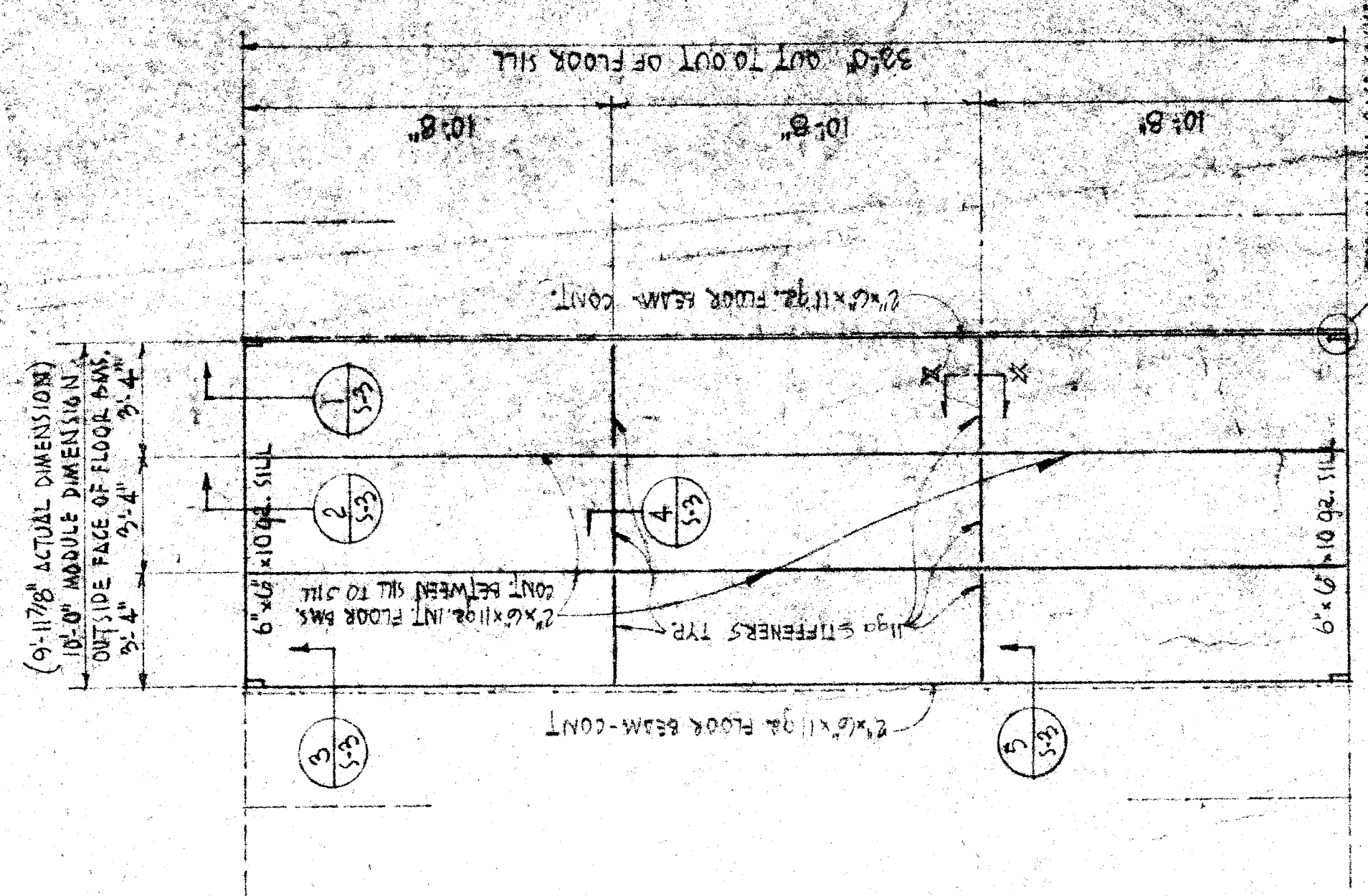
**DETAIL (3/3.3)**  
FLOOR BEAM @ MODULE LINE



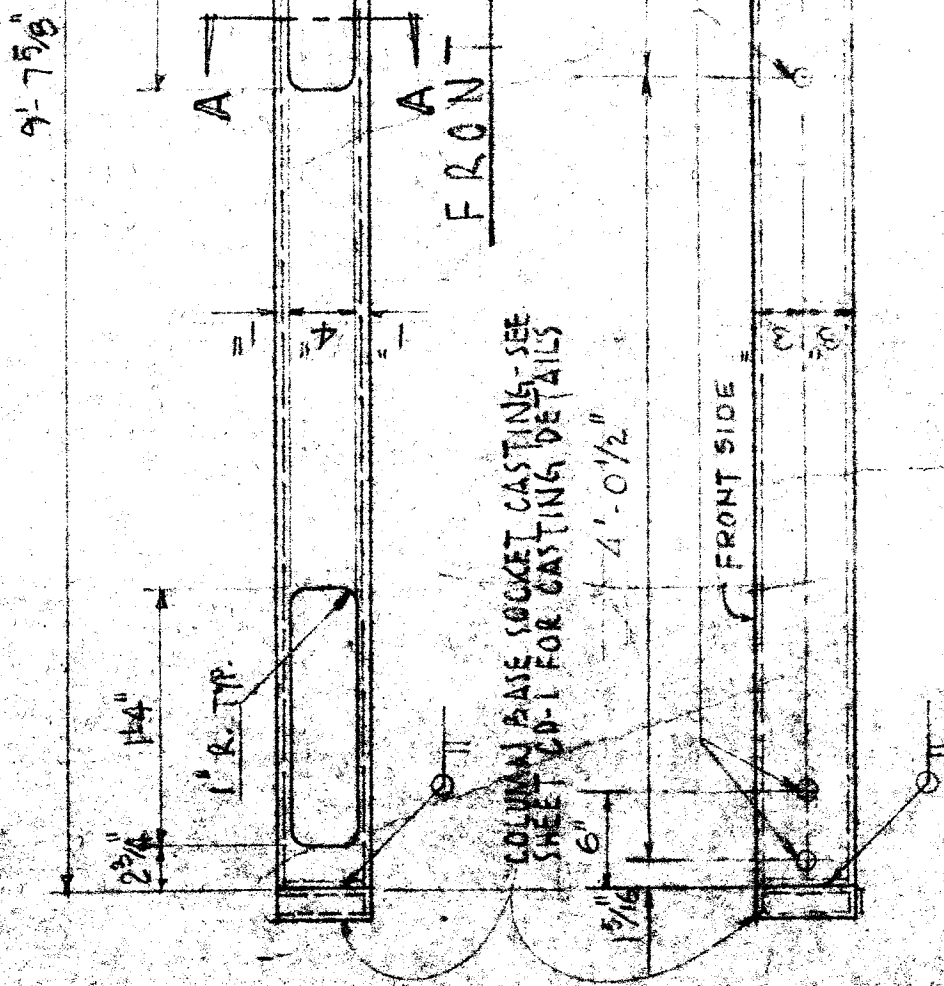
**DETAIL (4/3.3)**  
INT. FLOOR BEAM @ FLOOR STIFFENER



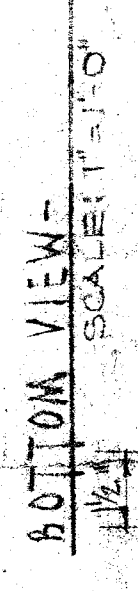
**FLOOR PLYWOOD LAYOUT**  
(W TYPICAL LAG SCREW LOCATIONS)  
10'-0" MODULE  
SCALE: 1/4" = 1'-0"



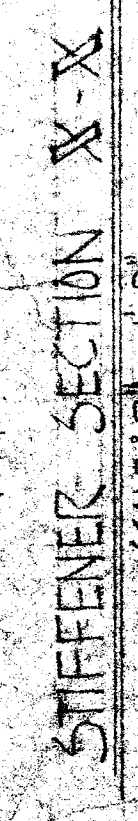
**FLOOR FRAMING PLAN**  
(ADJOINING MODULES SHOWN DOTTED. SEE ARCH. DRAWINGS FOR TOTAL BUILDING LENGTH.)  
10'-0" MODULE  
SCALE: 1/4" = 1'-0"



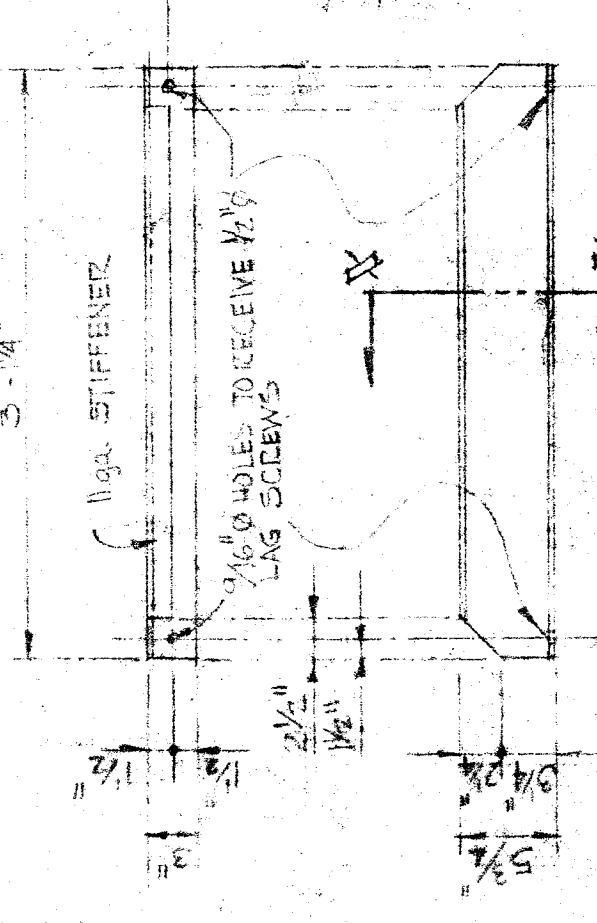
**FRONT VIEW**



**BOTTOM VIEW**



**STIFFENER SECTION X-X**



**TOP VIEW**



**FRONT VIEW**

**STIFFENER DETAILS**

- GENERAL NOTES:**
1. DETAILS #1 THRU #5 - SCALE: 1/4" = 1'-0"
  2. SEE GENERAL NOTES SHEET S-2
  3. ALL PLYWOOD FASTENERS TO BE AS MFG. BY NITI FASTENERS SYSTEM. STUD-ENK 40 BX-1 1/2 LONG - FOR FLOOR PLYWOOD.
  4. ALL BUTT WELDS TO BE FULL PENETRATION

PROJECT NO.	12-14-74
DATE	12-14-74
SCALE	AS NOTED
DRAWN BY	...
CHECKED BY	...
DESIGNED BY	...
APPROVED BY	...
CUSTOMER	BAKER FIELD
LOCATION	BAKER FIELD CALIFORNIA
TITLE	RELOCATABLE BUILDING FLOOR FRAMING PLAN & DETAILS
SCALE	5-3
NO.	...
DATE	...
REVISIONS	...
APPROVED BY	...
SCHOOL DISTRICT	...
STATE FIRE MARSHAL	...
OFFICE OF INSPECTION & CONSTRUCTION	...