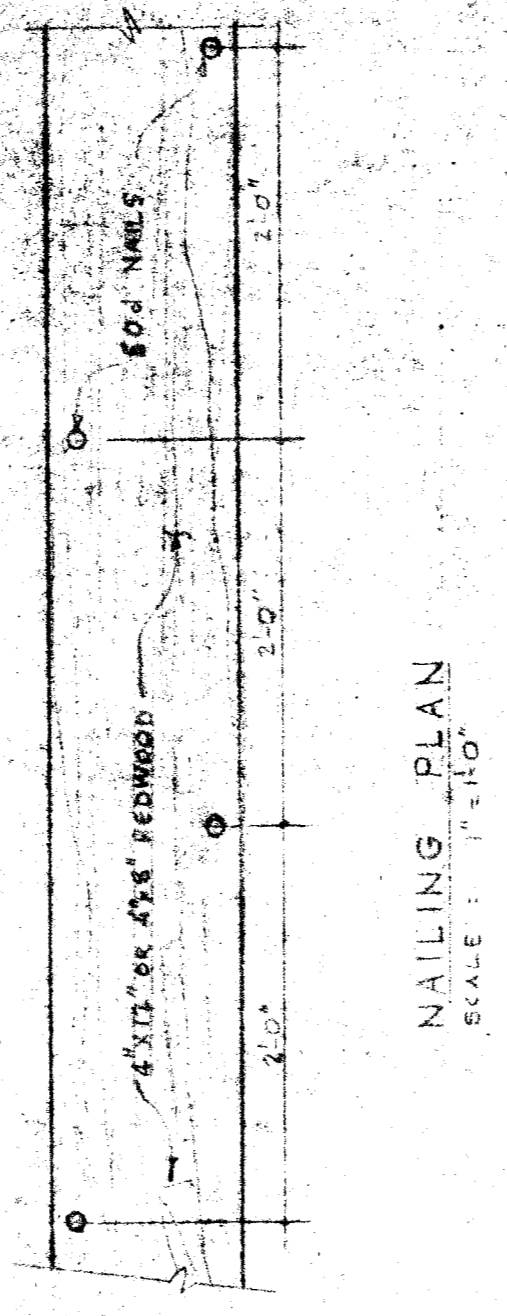


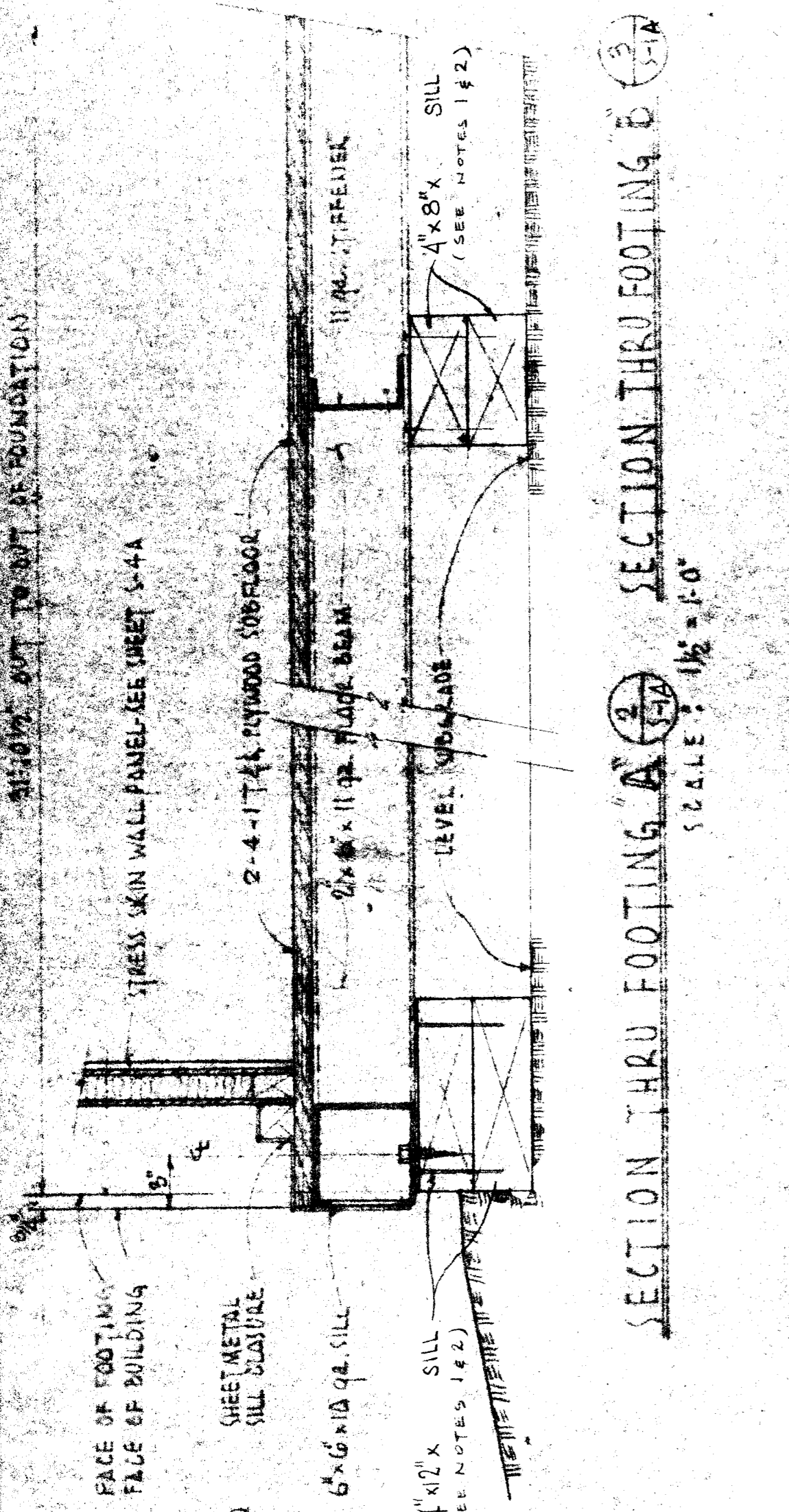
SECTION THRU SILL FOOTING A-A  
SCALE: 5"=1'-0"



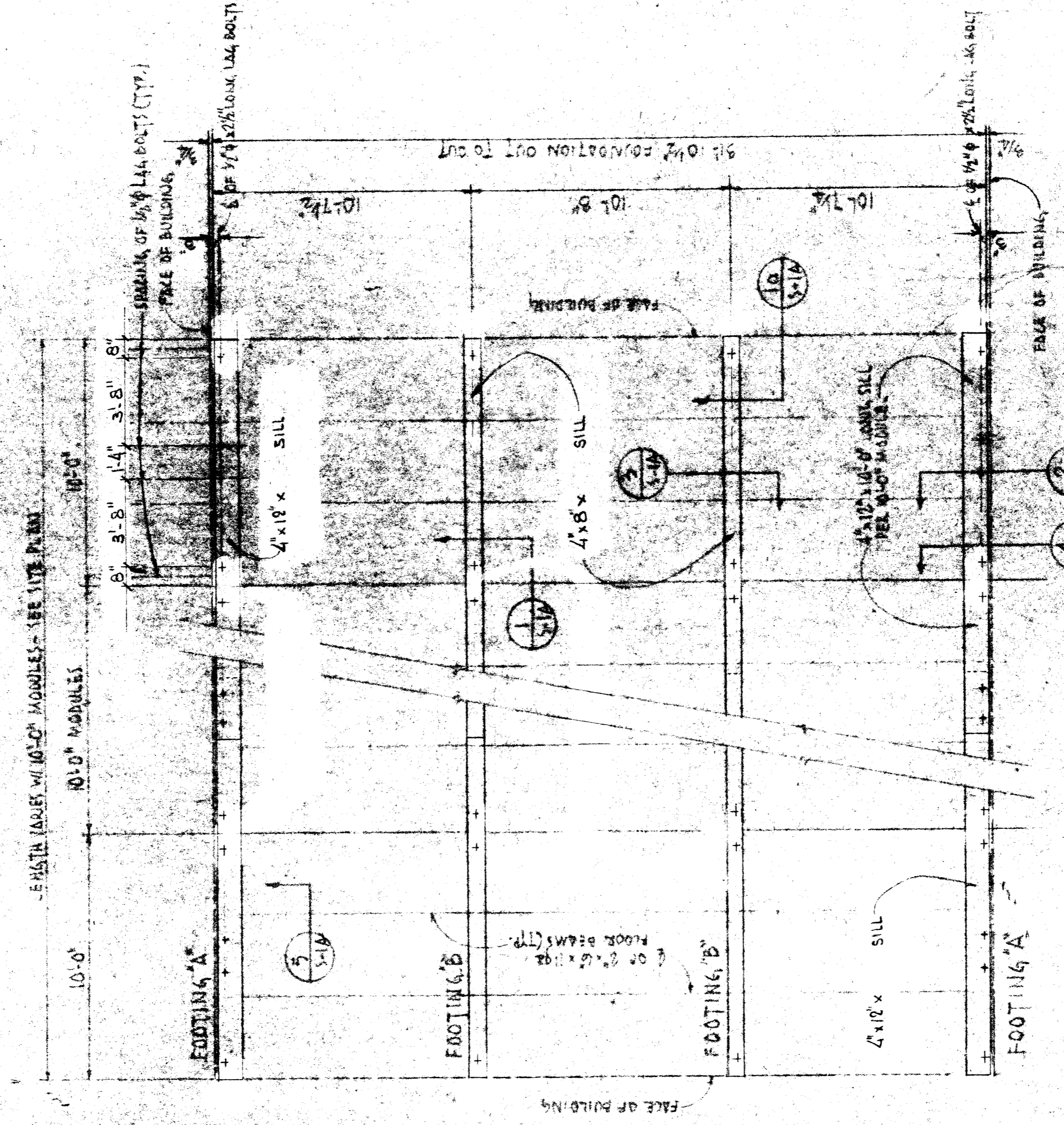
NAILING PLAN  
SCALE: 1"=1'-0"

**GENERAL NOTES:**

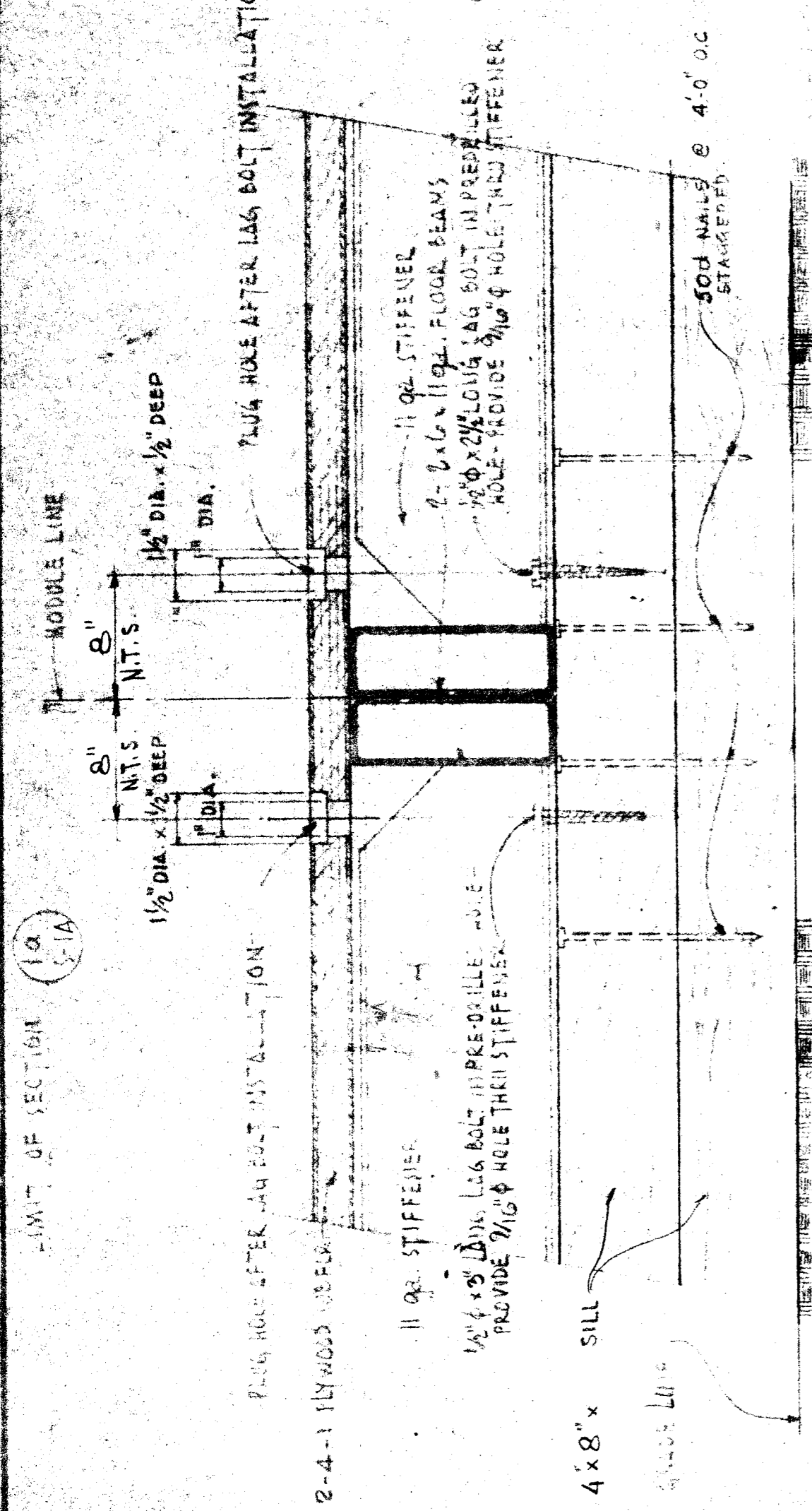
1. DESIGN FOR PRESSURE - 1500 P.S.F.
2. LAG BOLTS TO BE INSTALLED INTO 1/2" HOLES ARE DRILLED INTO SILLS.
3. THE THREADED PORTION OF THE LAG BOLT SHALL BE INSERTED IN ITS LEAD HOLE BY TAPPING WITH A WRENCH, NOT BY BEATING WITH A HAMMER.
4. SILLS SHALL BE EITHER HEAT TREATED INDUSTRIAL GRADE REDWOOD OR D.F. TREATED AS SPECIFIED BY CALIF. ADMIN. CODE TITLE 21.
5. **CAUTION** THIS PLAN IS FOR USE ON A PREVIOUSLY LEVELED SUBGRADE. APPROVED SILLS ARE TO BE PLACED ON THE LEVEL SUBGRADE PRIOR TO SETTING BUILDINGS.



SECTION THRU FOOTING B-B  
SCALE: 1/2"=1'-0"



FOUNDATION PLAN  
(WITH LAG BOLT LOCATIONS)  
SCALE: 1/4"=1'-0"



SECTION THRU MODULE JUNCTION  
SCALE: 5"=1'-0"

**NOTES**

1. USE 16-0" AND 14-0" LONG WOOD PIECES.
2. TWO LAYERS TO BE USED. BOTTOM PLANKS SHALL BE ALWAYS 4"x12" OR 4"x8". TOP PLANKS CAN BE 2"x12" & 2"x8" OR 4"x12" & 4"x8".
3. SEE GEN. NOTE # 6.

APPROVED BY	APPROVED BY	STATE FIRE MARSHAL	DATE	BY
			ARCHITECT c 4699	
APPROVED BY R. D. Galley c 4699		ARCHITECT		
APPROVED BY 		OFFICE OF ARCHITECTURE & CONSTRUCTION		
APPROVED BY 		RELOCATABLE BUILDING FOUNDATION PLAN & DETAILS (WOOD)		
APPROVED BY 		BAKERSFIELD CITY SCH. DIST. CALIFORNIA		
APPROVED BY 		WM. PENN. ELEM. SCHOOL BAKERSFIELD, CALIFORNIA		

modulux  
CALIFORNIA

3-1A

3022