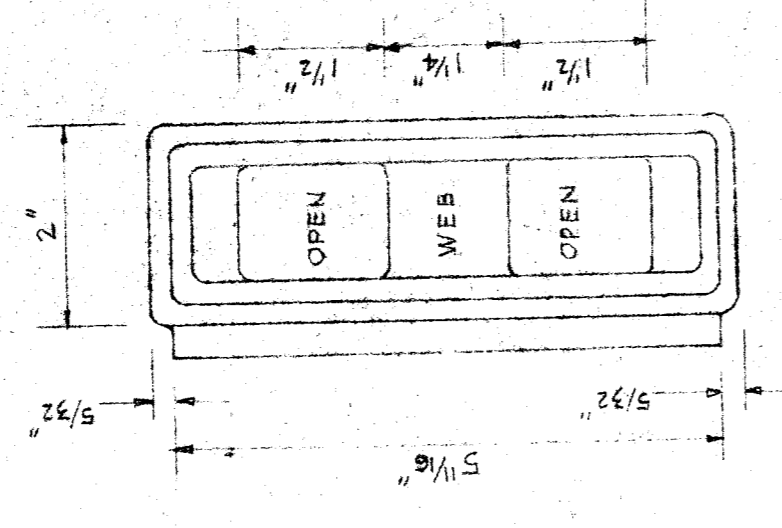
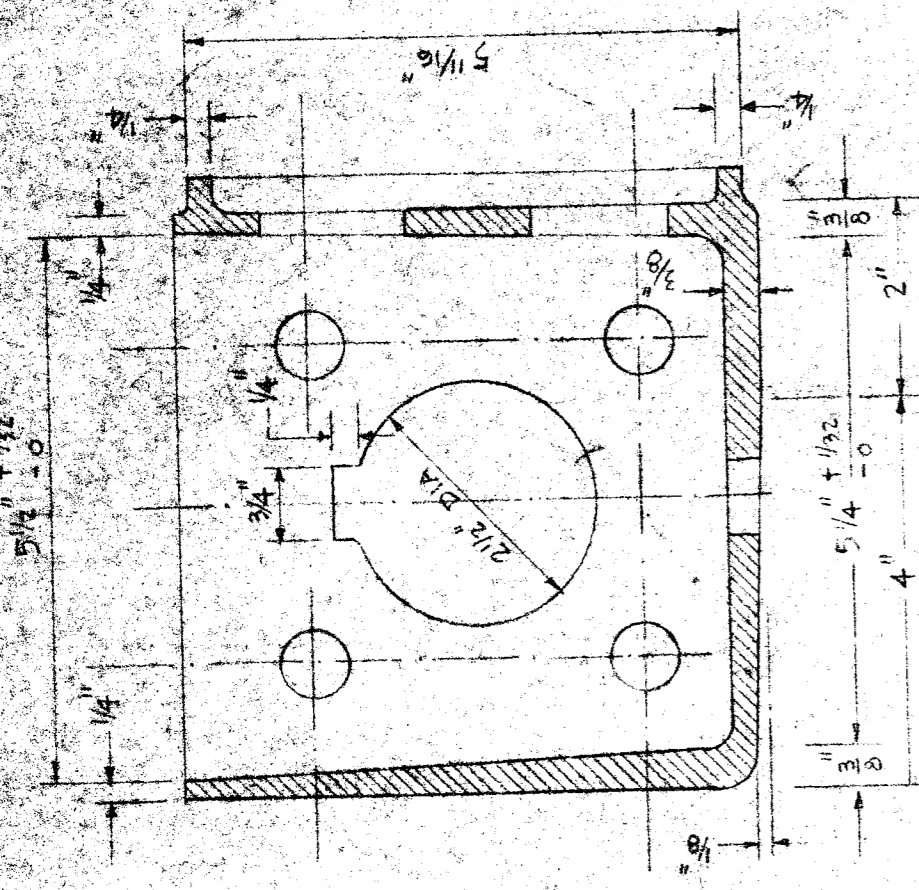


BOSS SIDE VIEW



BOSS END VIEW

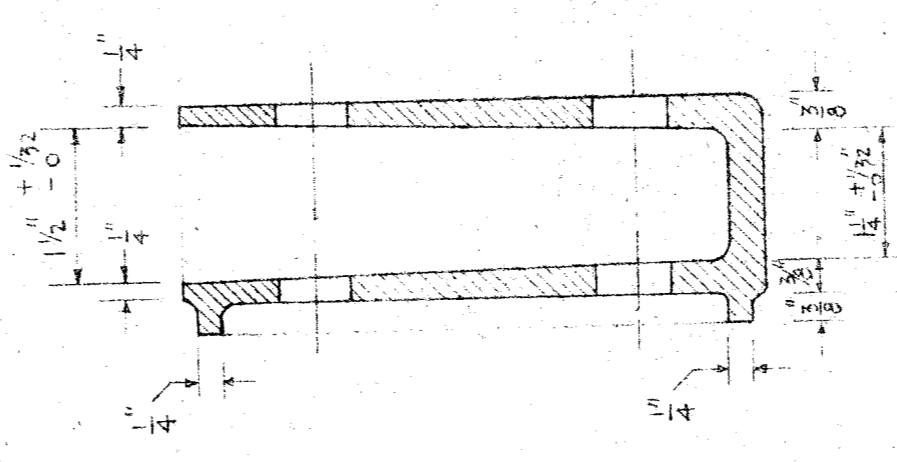


SECTION EE'

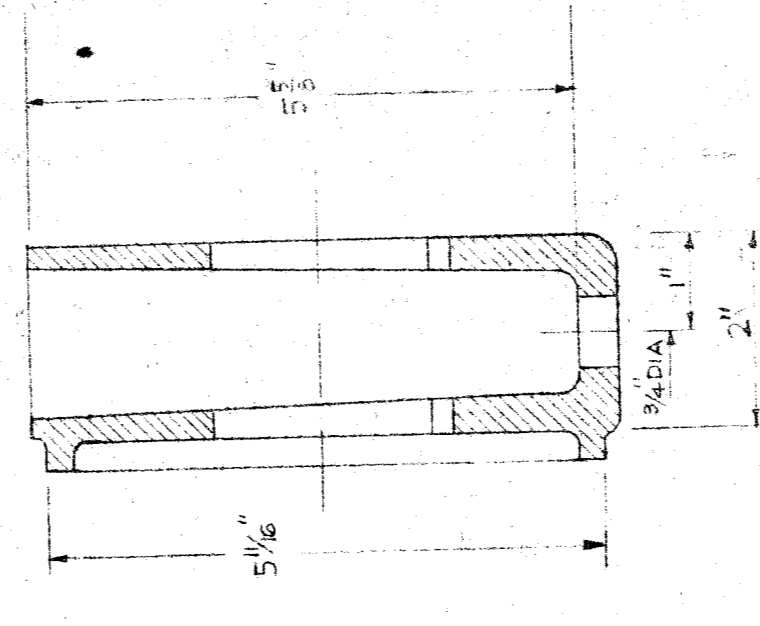
SOCKET CASTING

LEFT SOCKET SHOWN
RIGHT SOCKET OPPOSITE HAND

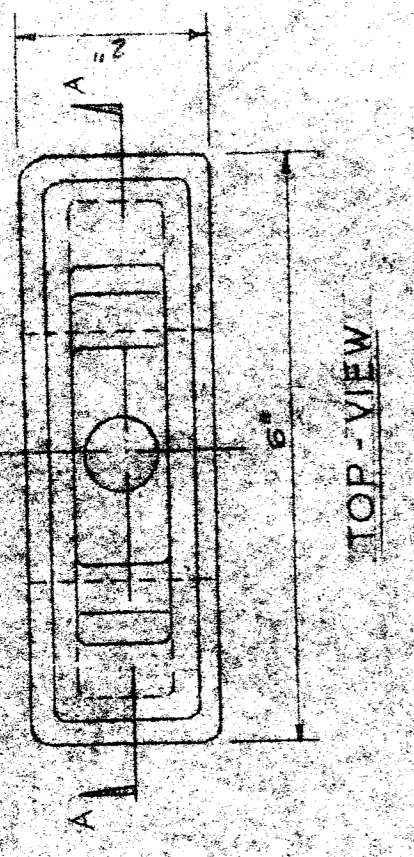
NOTE
ALL HOLES 2 3/32" DIA - EXCEPT AS NOTED
MATERIAL: ASTM A 27-62 - GR 70 40



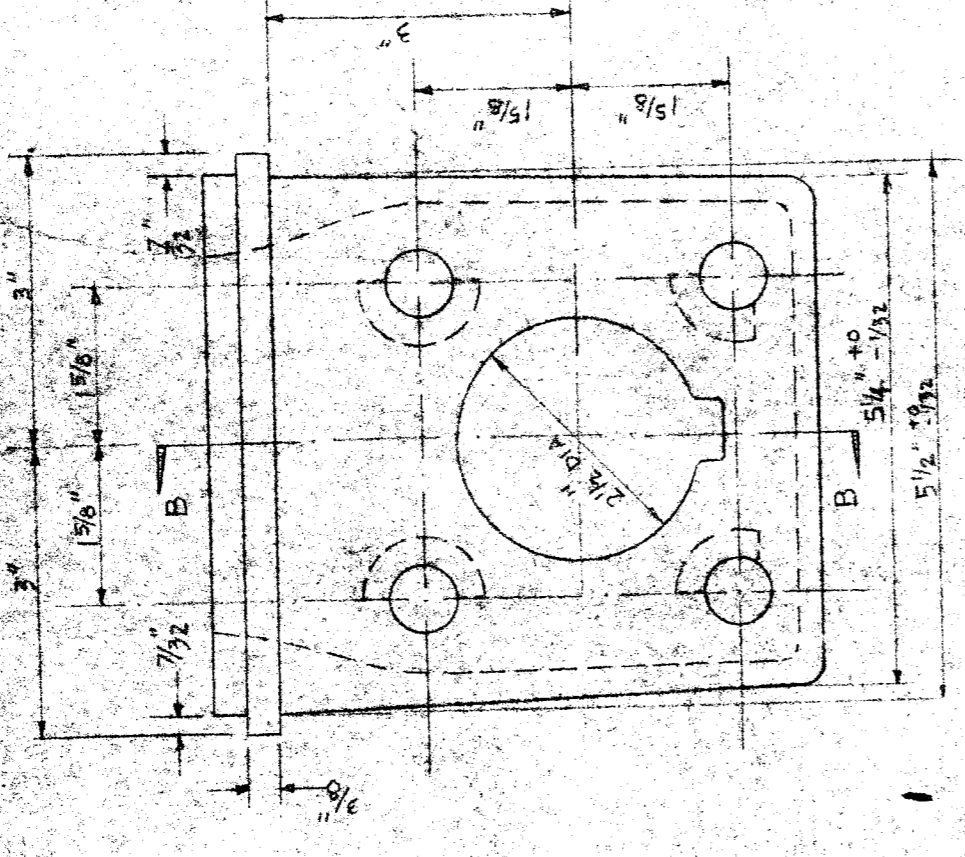
SECTION "CC"



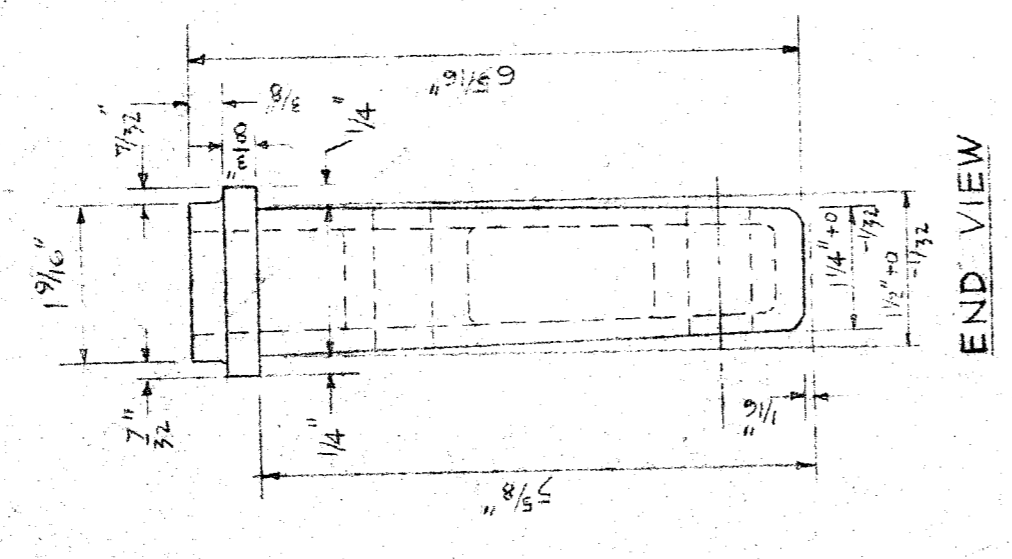
SECTION "DD"



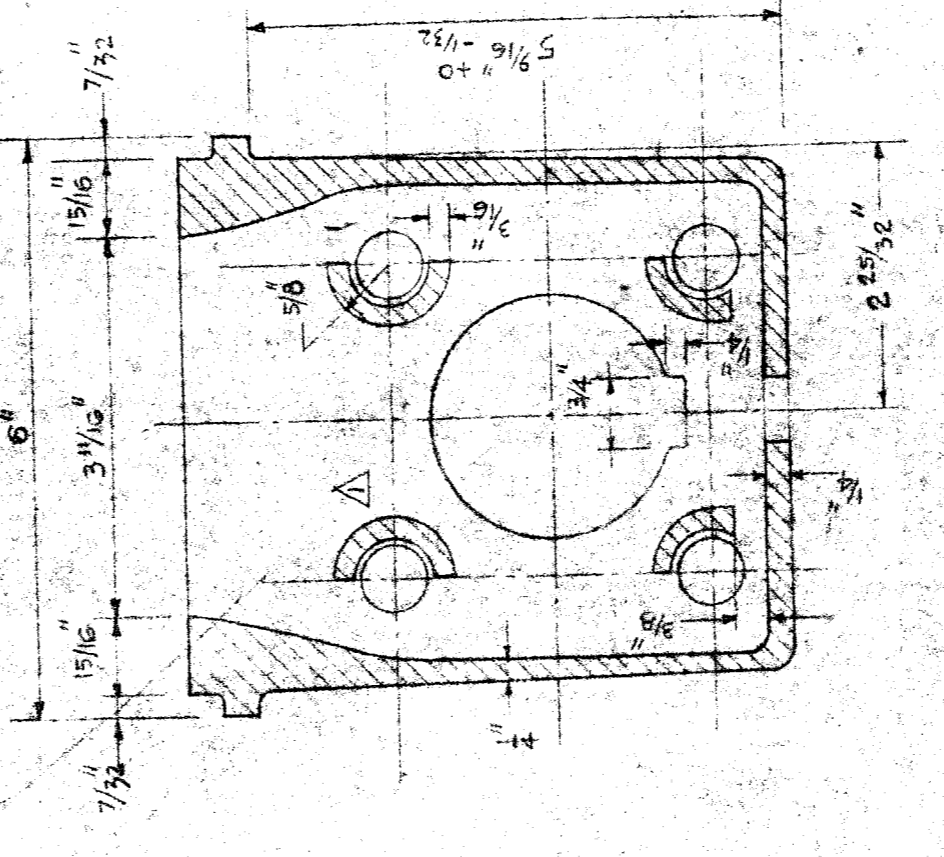
TOP VIEW



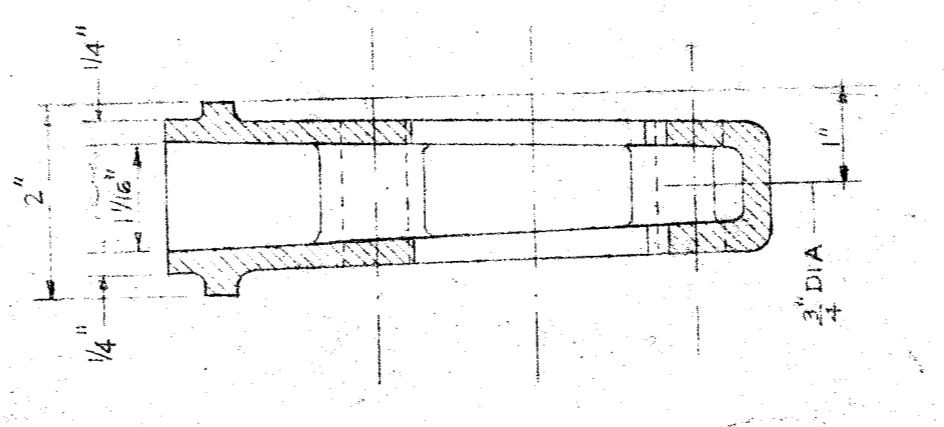
SIDE VIEW



END VIEW



SECTION "AA"



SECTION "BB"

SPADE CASTING

CORE ALL HOLES 2 3/32" DIA
EXCEPT AS NOTED
MATERIAL: ASTM A 27-GR 70 40

NOTE
CASTINGS SHALL BE FORMED BY
THE SHELL MOLDING PROCESS

| NO. | DESCRIPTION | DATE | BY |
|-----|-------------|------|----|
| | | | |
| | | | |
| | | | |
| | | | |
| | | | |
| | | | |
| | | | |
| | | | |
| | | | |

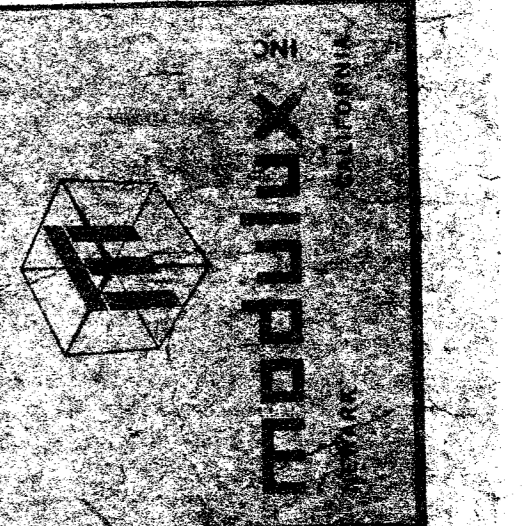
APPROVED BY _____
STATE FIRE MARSHALL

APPROVED BY _____
OFFICE OF ARCHITECTURE & CONSTRUCTION

APPROVED BY _____
STRUCTURAL ENGINEER

APPROVED BY _____
ARCHITECT

APPROVED BY
R. W. Galus
C 4699



BAKERSFIELD CALIFORNIA
RELOCATABLE BUILDING
CASTING DETAILS

DRAWN BY A. G. ...
CHECKED BY M. J. ...
DATE 12-1-57
SCALE 1/2" = 1'-0"
APPROVED BY ...
W. O. ...
CONT NO. 3022
DWG. NO. ...

HISLER ELEM. SCHOOL
WILLIAM PENN ELEM SCHOOL
BAKERSFIELD CITY SCH. DIST.
BAKERSFIELD CALIFORNIA