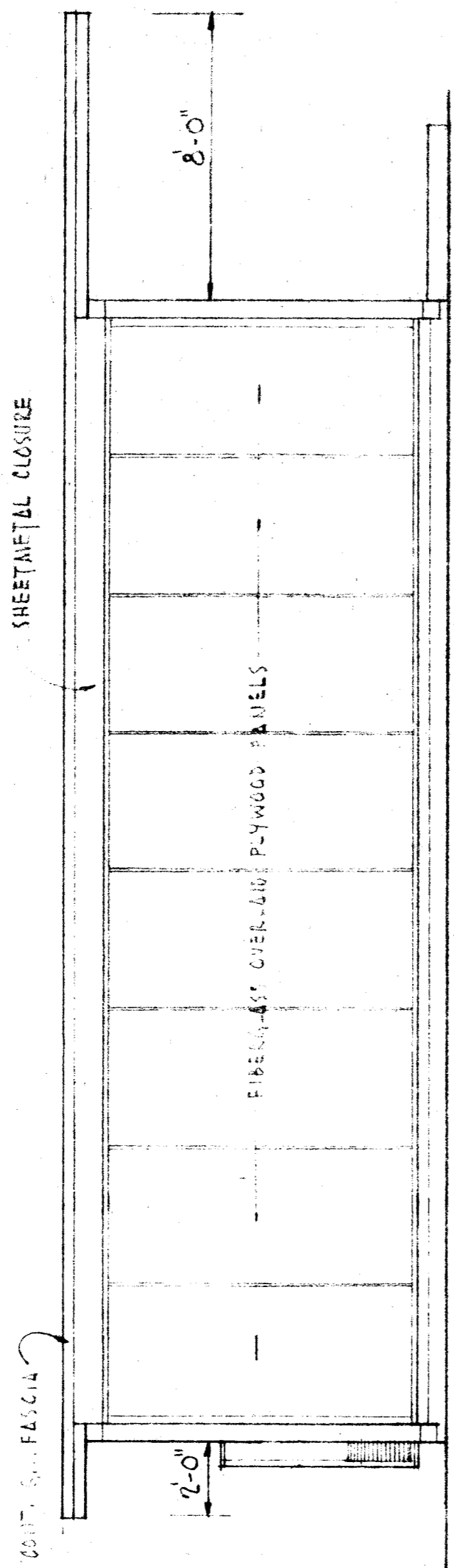
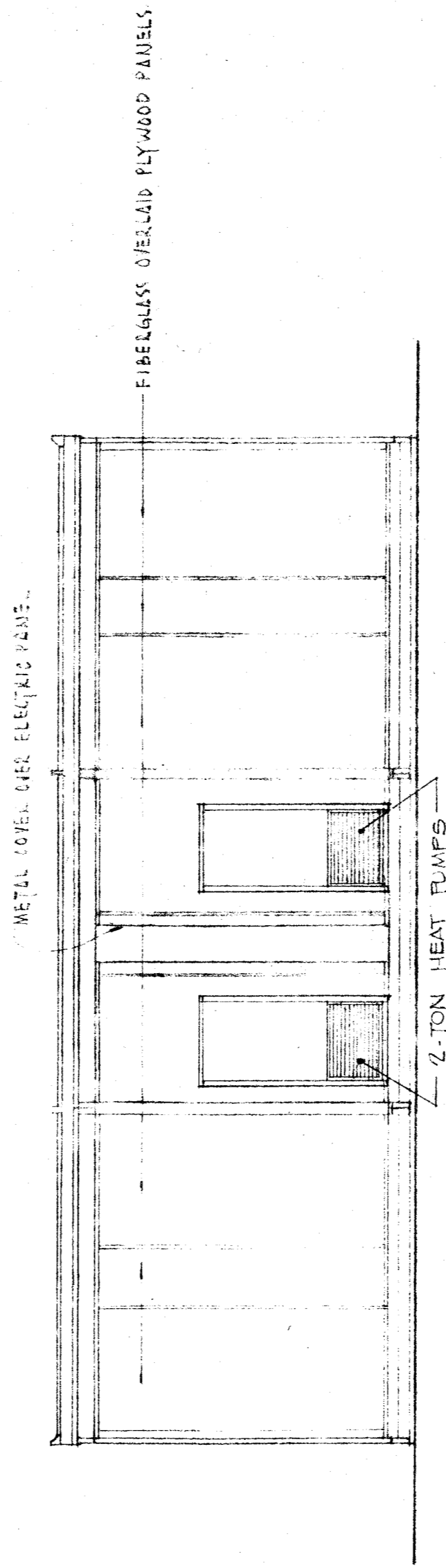


LANDING

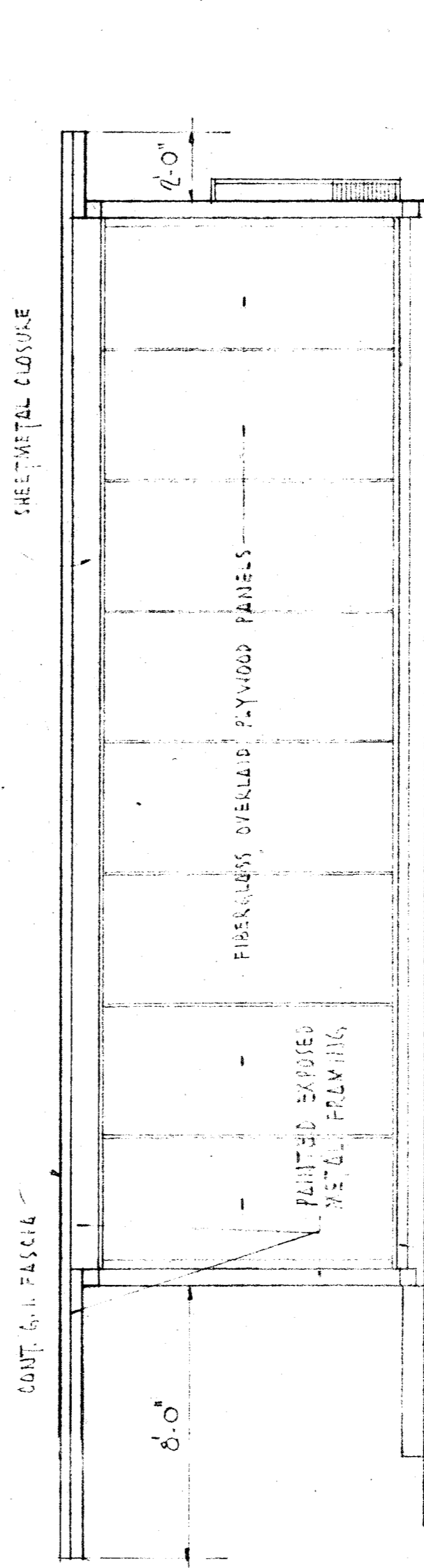
EXTERIOR ELEVATION - 1



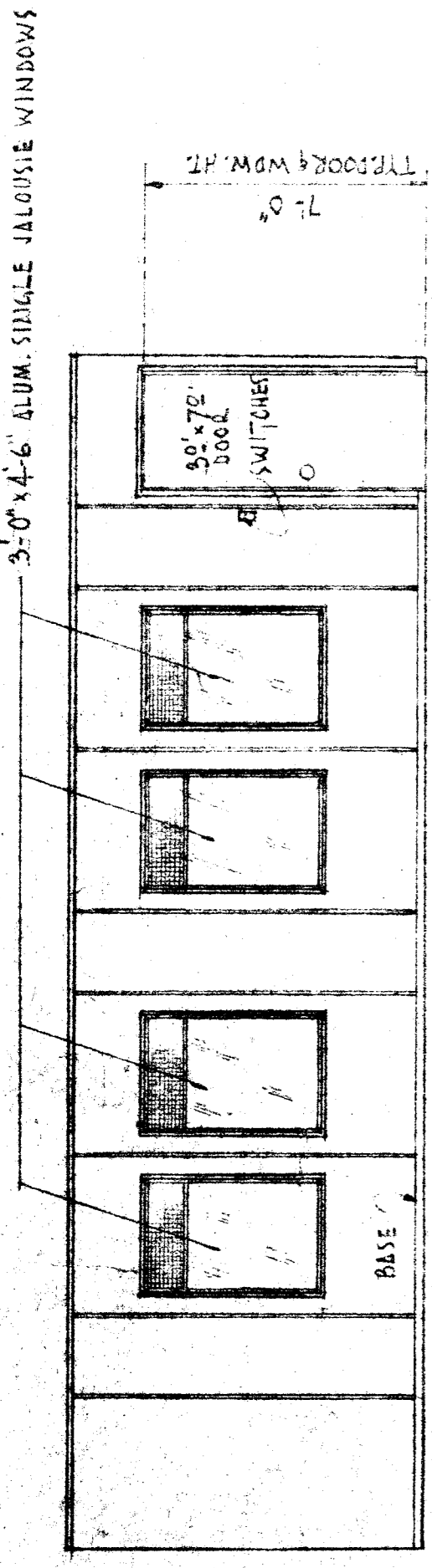
EXTERIOR ELEVATION - 2



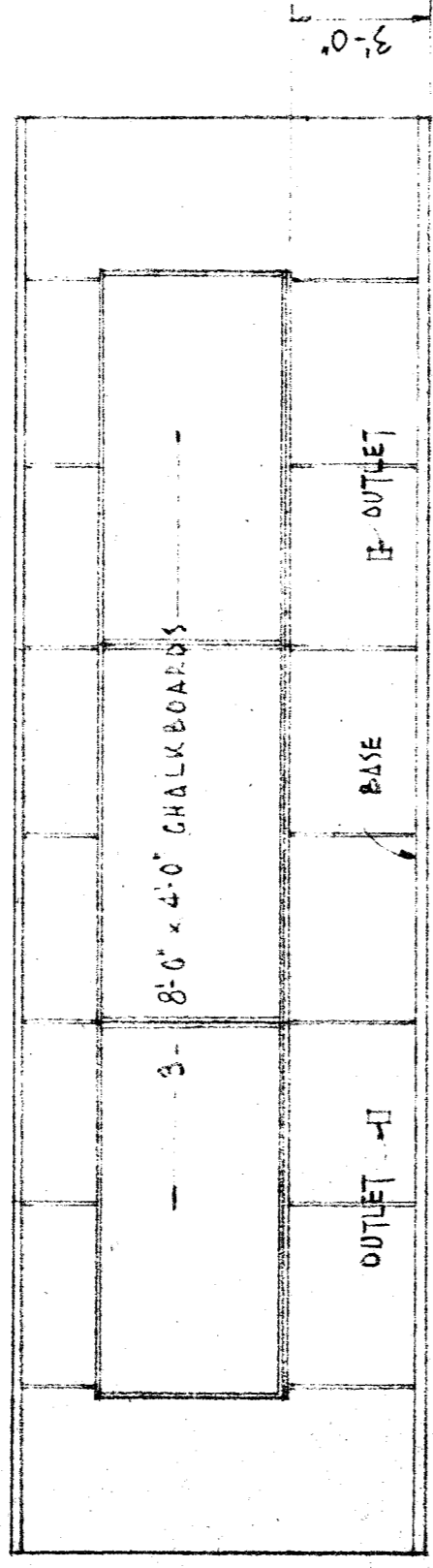
EXTERIOR ELEVATION - 3



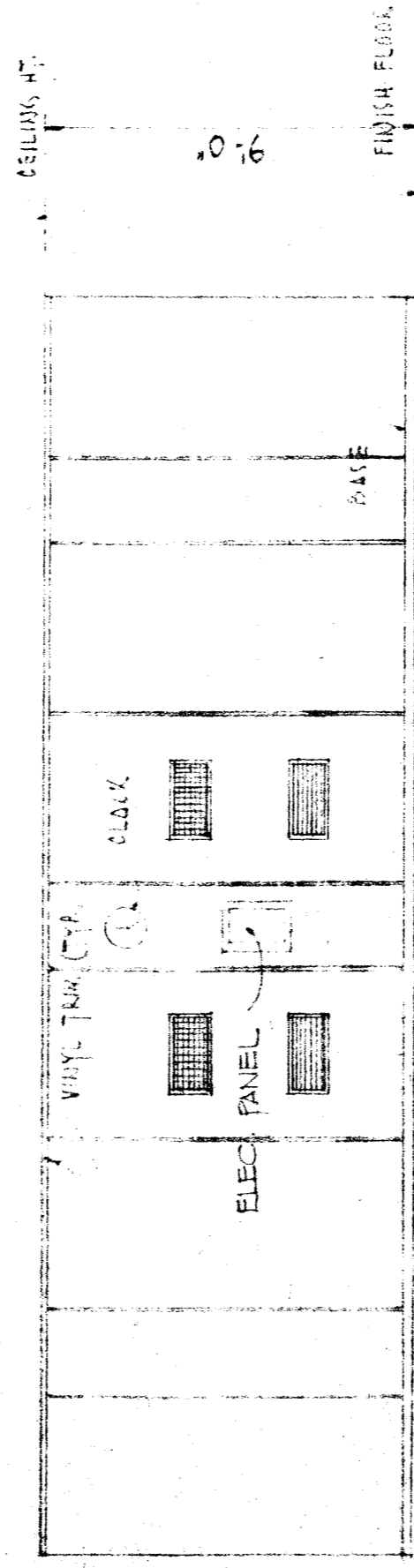
EXTERIOR ELEVATION - 4



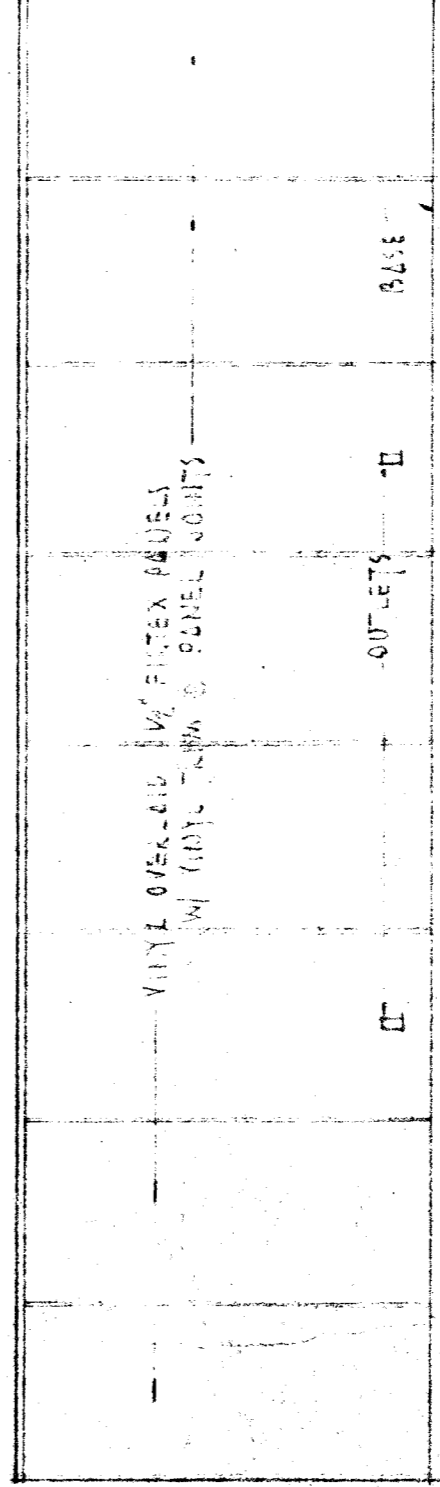
INTERIOR ELEVATION - 5



INTERIOR ELEVATION - 6



INTERIOR ELEVATION - 7



INTERIOR ELEVATION - 8

NO.	DESCRIPTION	DATE	BY

APPROVED BY: STATE FIRE MARSHALL

OFFICE OF ARCHITECTURE & CONSTRUCTION

APPROVED BY: *Robynus* 646997

ARCHITECT

**modulux** NETWORK CALIFORNIA

ESSLER ELEM. SCHOOL  
WILLIAM PENN. ELEM. SCHOOL  
BAKERSFIELD CITY SCH. DIST.

BAKERSFIELD CALIFORNIA

RELOCATABLE BUILDING  
ELEVATIONS - 30'0"

CONTRACT NO. 302L  
DATE: 12-14-61  
SCALE: 1/4" = 1'-0"

DRAWN BY: [Signature]  
CHECKED BY: [Signature]

**A-2**