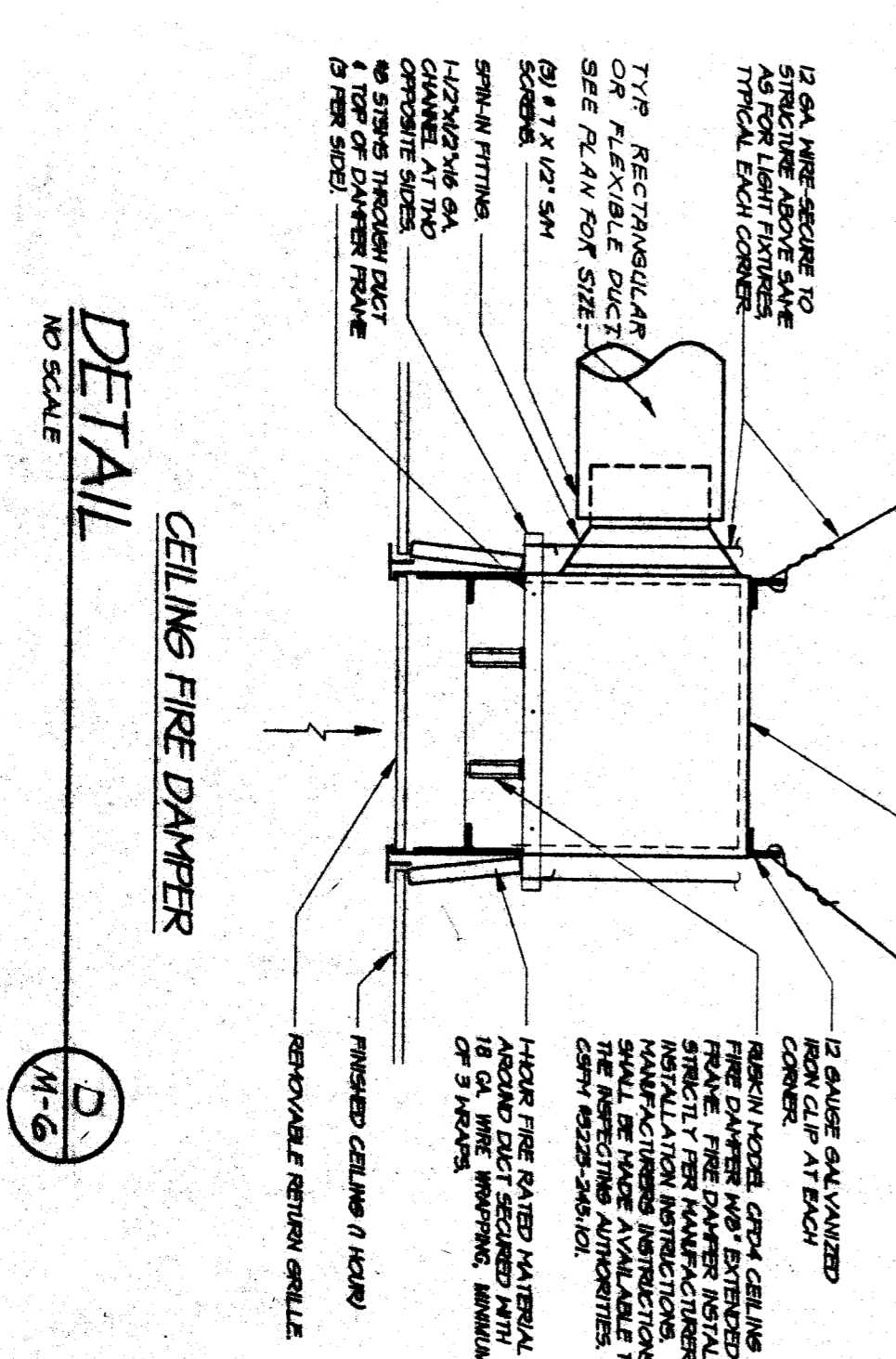
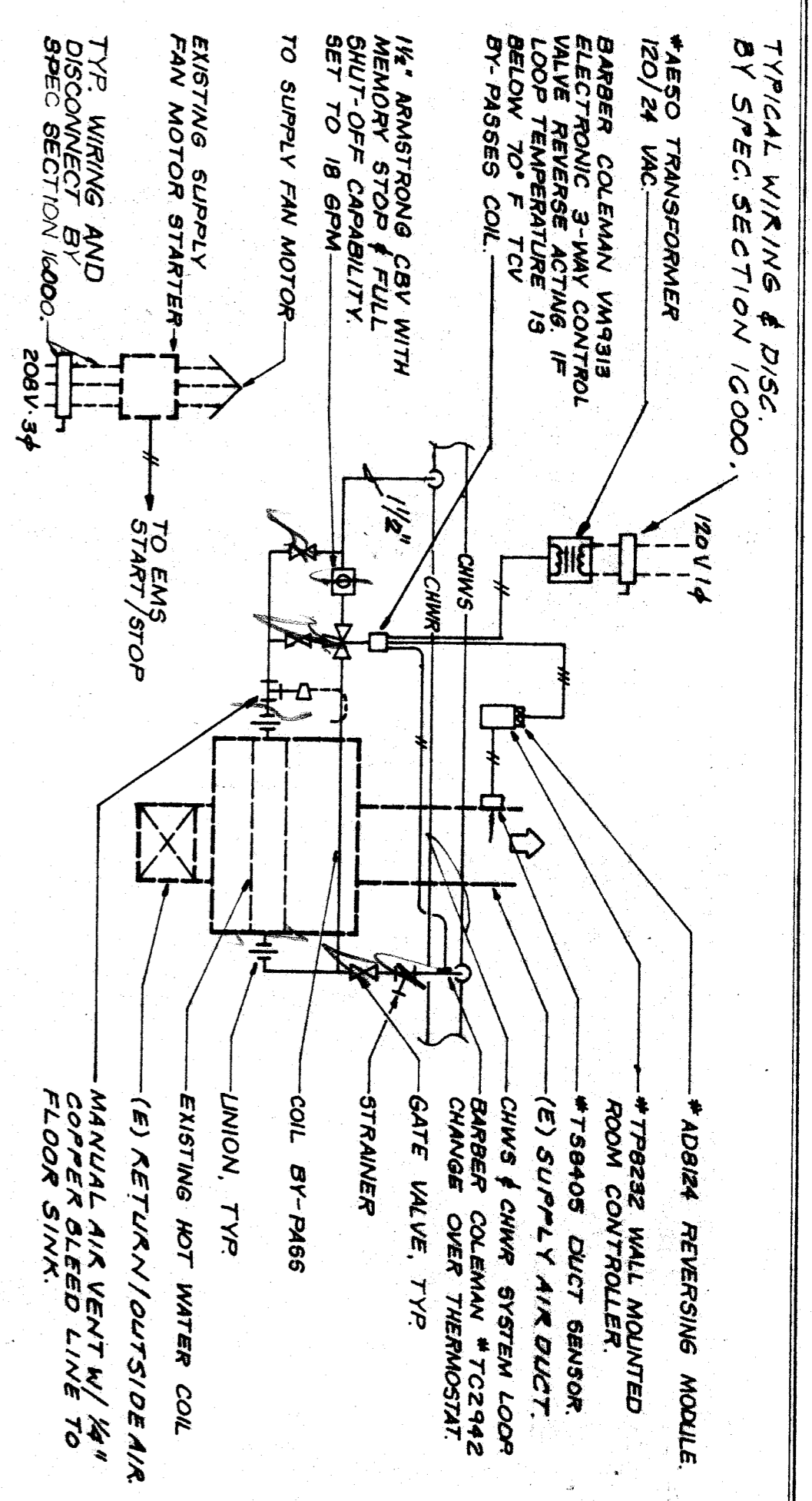


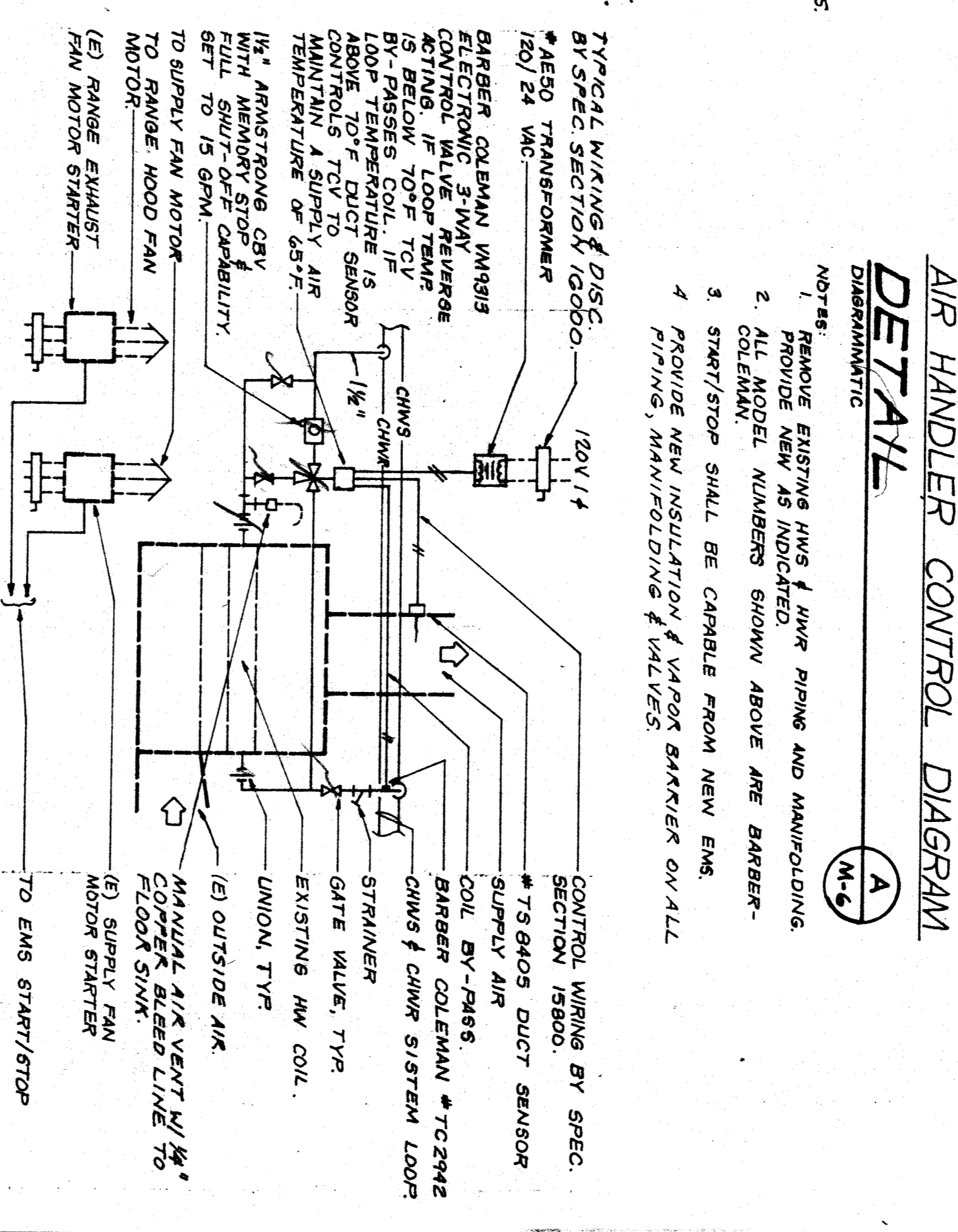
UNIT A3
AIR CONDITIONING PLAN
SCALE: 1/8" = 1'-0"



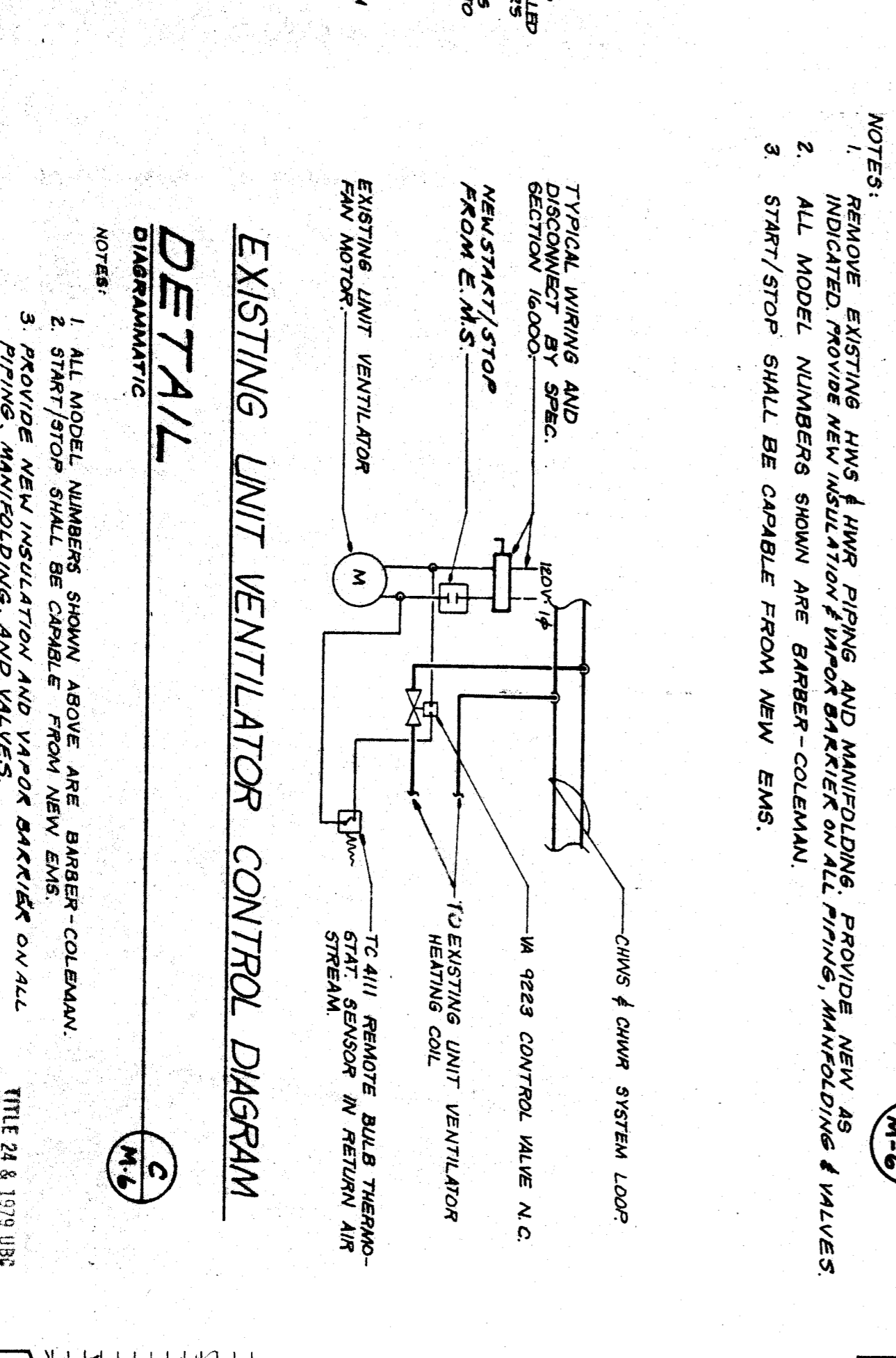
CEILING FIRE DAMPER
DETAIL
NO SCALE



AIR HANDLER CONTROL DIAGRAM
DETAIL
M-6



MAKE-UP AIR UNIT CONTROL DIAGRAM
DETAIL
M-6



EXISTING UNIT VENTILATOR CONTROL DIAGRAM
DETAIL
M-6

- NOTES:
1. REMOVE EXISTING HWS & HWK PIPING AND MANIPULATING. PROVIDE NEW AS INDICATED. MOVE NEW INSTALLATION & WAPOR BARRIER ON ALL PIPING, MANIPULATING & VALVES.
 2. ALL MODEL NUMBERS SHOWN ARE BARBER-COLEMAN.
 3. START/STOP SHALL BE CAPABLE FROM NEW EMS.

- NOTES:
1. ALL MODEL NUMBERS SHOWN ABOVE ARE BARBER-COLEMAN.
 2. START/STOP SHALL BE CAPABLE FROM NEW EMS.
 3. PROVIDE NEW INSULATION AND VAPOR BARRIER ON ALL PIPING, MANIPULATING, AND VALVES.