

24" X 24" 550 CFM SEE TYPICAL DETAIL D/M-6.

ROOF EXHAUST FAN 26" X 26" DUCT THRU ROOF. SEE TYPICAL DETAIL B/M-2.

WALL MOUNTED EMS/CPU-MOUNT ADJACENT TO ELECTRICAL PANEL AND TABLE MOUNTED. EMBEDDED IN CONCRETE. SEE DETAIL B/M-3. CONFIRM EXACT LOCATION IN FIELD WITH ARCHITECT. SEAL NEW PIPE OPENINGS WHERE PIPES PENETRATE FIRE-RATED FAN ROOM WALLS. TYP. SEE SPECIFICATIONS.

CONNECT (E) ADMINISTRATION AIR HANDLER PIPING TO NEW CHWS & CHWR AND MODIFY CONTROLS. SEE DET. A/M-6.

24" X 24" 700 CFM

EXISTING SKYLIGHT. SEE TYP DETAIL D/M-2.

CHWS & CHWR IN ATTIC SPACE. TYP. SEE DETAIL D/M-1.

ROUTE PIPING DOWN FACE OF W/LL. FLANGE THRU TOP OF UNIT VENTILATOR CABINET. FALSE BACK, TYP.

BAROMETRIC RELIEF TYP. SEE DETAIL C/M-5.

SPIN-IN FITTING. SEE DETAIL C/M-2.

24" X 24" 700 CFM. ROOF EXHAUST FAN. 26" X 26" DUCT THRU ROOF. SEE DETAIL B/M-2 FOR SUPPORT.

CHWS & CHWR PIPING BELOW GRADE. FOR CONTINUATION SEE SHEET M-4.

NEW PIPE CHASE. SEE TYP DETAIL B/M-5.

FOR NEW WORK TO BE COMPLETED IN THIS AREA SEE SHEET M-6. FLEXIBLE DUCT. SEE TYP DETAIL C/D/M-2.

24" X 24" 550 CFM

NEW FAN-COIL. SEE DETAIL P/M-7.

1 1/4" X 6" O.A. DUCT ROUTE DIRECTLY UNDER ATHLETIC ROOM CEILING. ELBOW DOWN AND PENETRATE EAST WALL AT 6" ABOVE FINISH FLOOR.

100 CFM O.A.

FAN-COIL BRANCH PIPING TO BE ROLLED ABOVE CEILING UNDER BEAM AND DOWN WALL ADJACENT TO O.A. DUCT.

NEW UNIT VENTILATOR. TYP. SEE DETAIL K/M-7. SET MIN. 0.5 A TO 200 CFM. SEE CONTROL DIAGRAM C/M-3.

SECURE NEW BRANCH PIPING TO EXISTING WALL ABOVE NEW SEALING. SECURE PIPE GUIDE TO WOOD STUD W/ 3/8" X 2 1/2" EMBEDMENT LAG BOLT. TYP. REMOVE (E) 57" X 10 1/2" (NOMINAL) LOUVER AND REPLACE WITH NEW (A) OF SAME SIZE. PROVIDE FACTORY FINISHED BACK COVER, TYP.

CHWS & CHWR BRANCH PIPING TO TERMINAL UNITS TO BE ROLLED DIRECTLY UNDER STEEL BEAM, TYP. SEE DETAIL A/M-5. SEE SEQUENCE OF OPERATION DETAIL C/M-5, TYP.

ROUTE PIPING DOWN FACE OF WALL & BACK THRU UNIT VENTILATOR CABINET. FALSE TYP. SEE PIPE SUPPORT DETAIL D/M-5.

EXISTING SOIL PIPE BELOW GRADE. CONFIRM EXACT LOCATION & DEPTH IN FIELD. OFFSET NEW PIPING TO SUIT.

NEW PIPE CHASE. SEE DETAIL B/M-5.

FOR CONTINUATION OF CHWS & CHWR. SEE SHEET M-1.

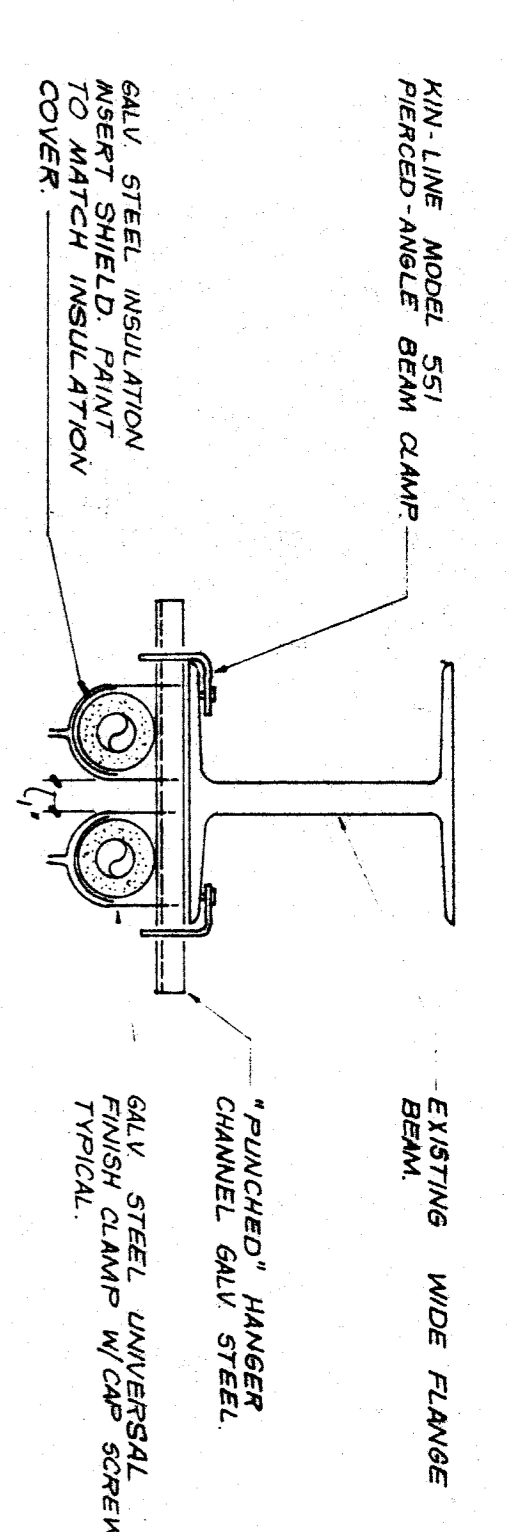
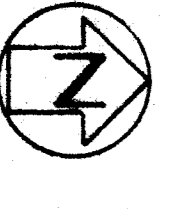
24" X 24" 700 CFM. SEE DETAIL D/M-6. FOR R.A. PLENUM BOX. FOR CONTINUATION OF CHWS & CHWR. SEE SHEET M-6.

UNIT A2

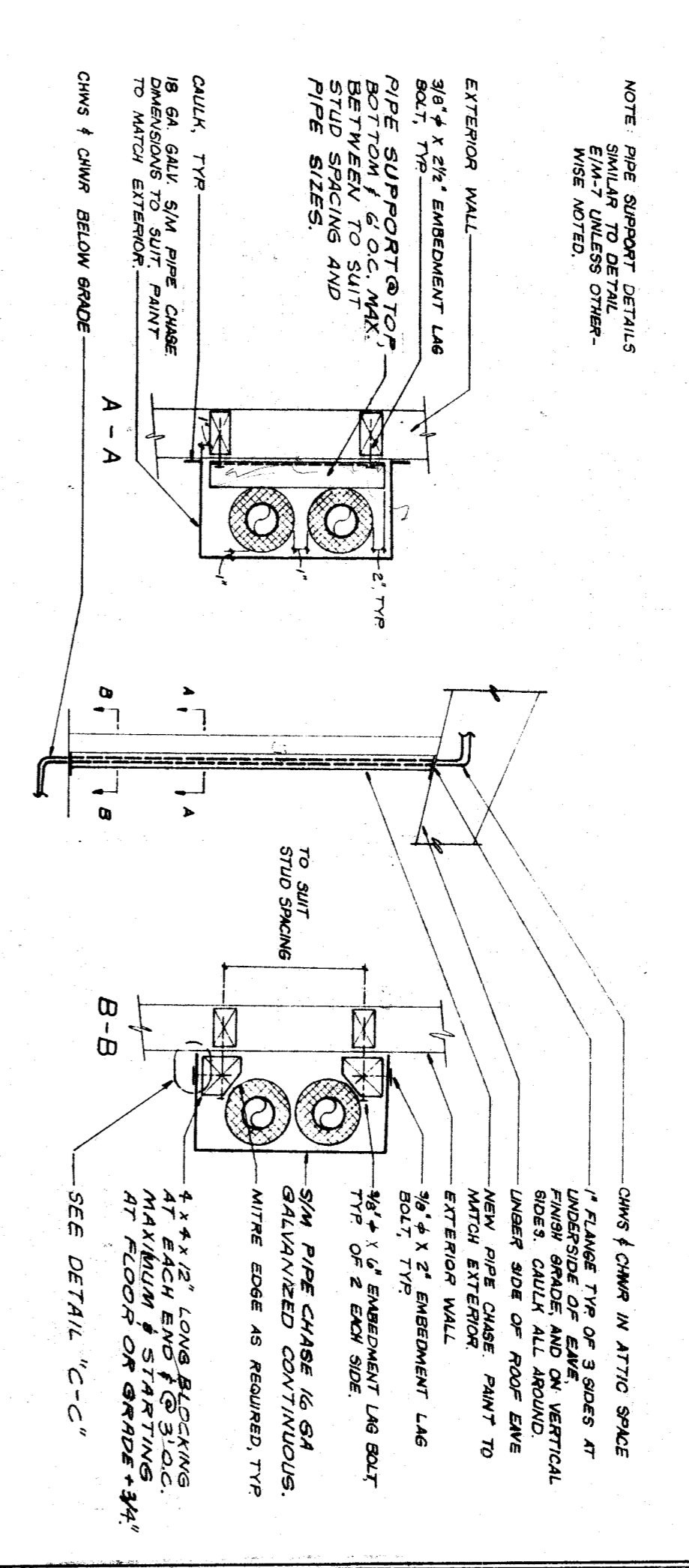
AIR CONDITIONING PLAN

SCALE: 1/8"=1'-0"

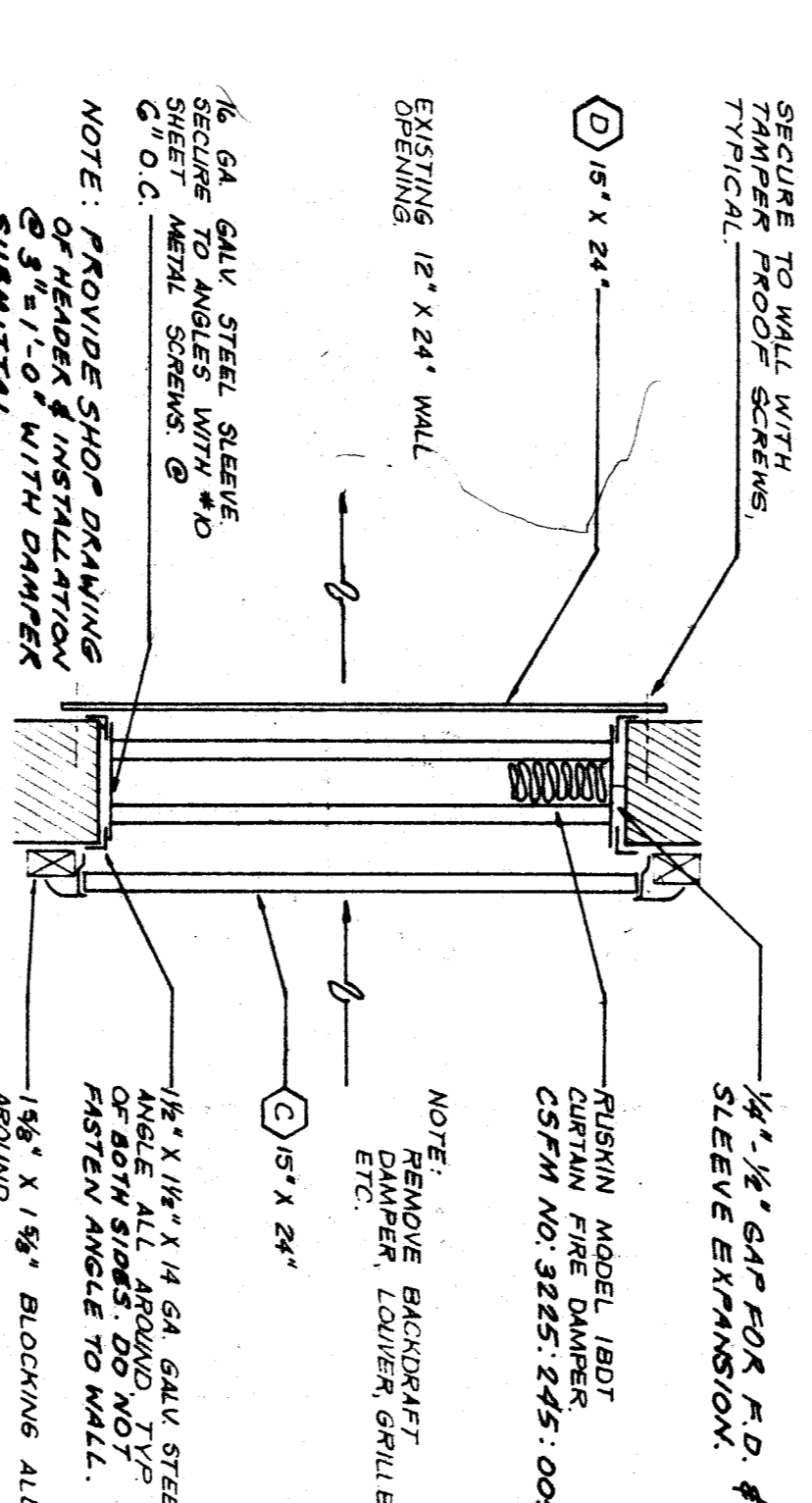
- 1. ALL VISIBLE INSULATED PIPING IN THIS BUILDING SHALL BE COVERED WITH PLASTIC.
2. FOR EQUIPMENT TO BE REMOVED FROM THIS AREA SEE DEMOLITION PLAN, SHEET M-8.



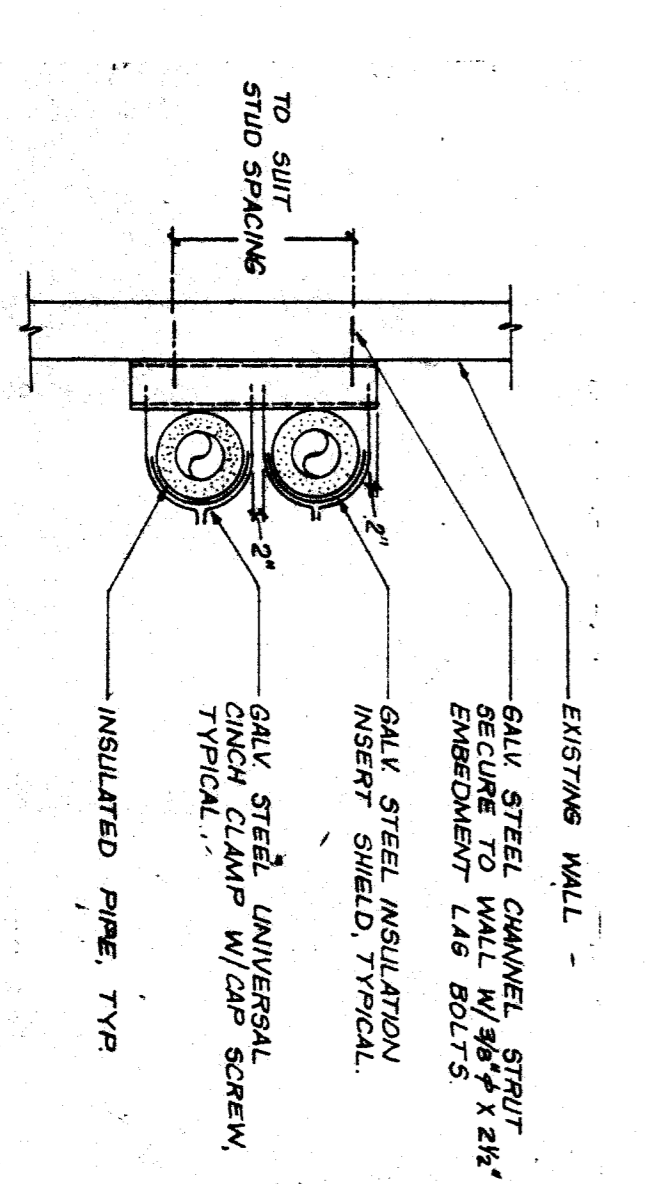
PIPE HANGER DETAIL NO SCALE



VERTICAL PIPE SUPPORT WITH COVER DETAIL NO SCALE



FIRE DAMPER IN RELIEF AIR ASSEMBLY DETAIL NO SCALE



VERTICAL PIPE SUPPORT DETAIL NO SCALE

2-26-90 REVISIONS

JOHN FRANK MITCHELL, INC. CONSULTING MECHANICAL ENGINEERS. 444 WEST BOWLER, SUITE 107, FRESNO, CALIFORNIA 93708. 8738.2

WILLIAM PENN SCHOOL MODERNIZATION. BAKERSFIELD CITY SCHOOL DISTRICT. BAKERSFIELD, CALIFORNIA

Kendrick Design Group architects-planners. 2115 19th Street, Bakersfield, CA 93301. (805) 322-1863.

Job number 2711, Sheet number M-5. Title: UNIT A-2.