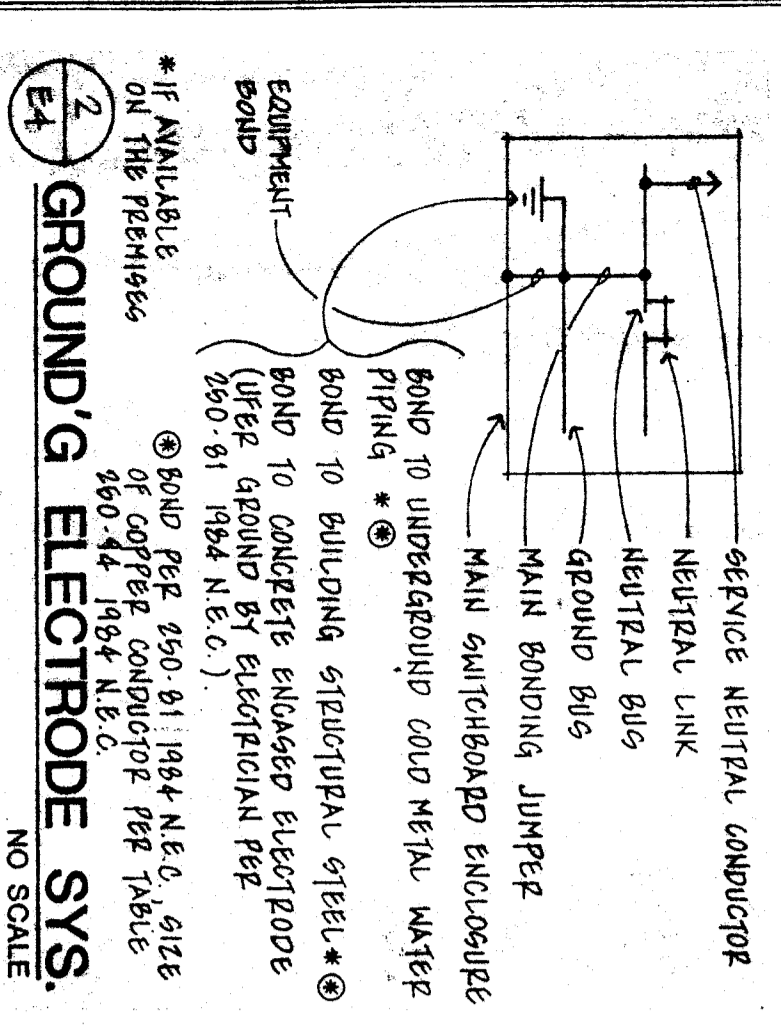


AT EACH PANEL LISTED BELOW REPLACE EXISTING BUS AND BREAKERS WITH NEW BUS AND BREAKERS (SIZE AND QUANTITY AS NOTED). PROVIDE NEW INTERIOR BREAKER COVER. PANEL ENCLOSURE AND DOOR TO REMAIN UNLESS EXISTING DIMENSIONS NOTED AS NOT BEING ACCEPTABLE IN FIELD. RECONNECT EXISTING BRANCH CIRCUITS. #

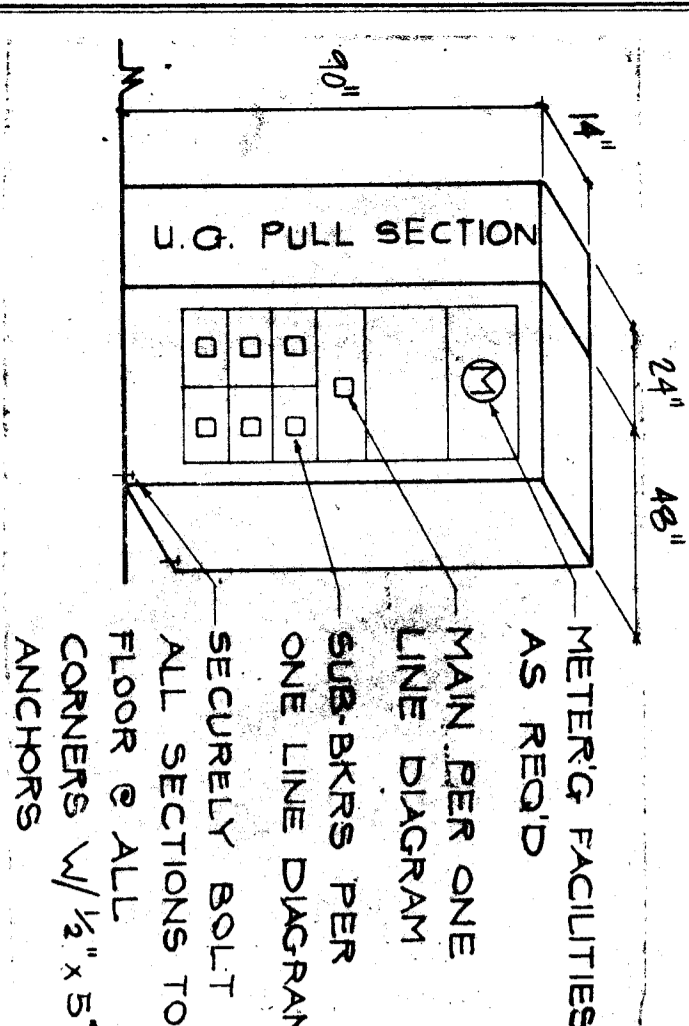
- PANEL "A": 120/208V 3ø 4W, 225 AMP. PROVIDE BREAKERS: 12 - 20/1 (2 ARE SPARE), 9 - 15/1, 5 - 15/3, 225/3 (MAIN). EXISTING ENCLOSURE = 60" H X 20" W.
- PANEL "E": 120/208V 3ø 4W, 100 AMP. PROVIDE BREAKERS: 11 - 20/1 (5 FOR LIGHTS, 6 FOR MECH. EQUIP., 2 ARE SPARE), 2 - 20/3, 3 - 15/1, 20" W.
- PANEL "F": 120/208V 3ø 4W, 225 AMP. PROVIDE BREAKERS: 14 - 20/1 (4 FOR LIGHTS, 2 FOR MECH. EQUIP., 2 ARE SPARE), 5 - 15/1, 225/3 (MAIN). EXISTING ENCLOSURE = 45" H X 20" W.
- PANEL "G": 120/208V 3ø 4W, 100 AMP. PROVIDE BREAKERS: 17 - 20/1 (3 FOR LIGHTS, 2 FOR MECH. EQUIP., 2 ARE SPARE), 5 - 15/1, 100/3 (MAIN). EXISTING ENCLOSURE = 32" H X 20" W.

* PROVIDE NEW TYPEWRITTEN CIRCUIT DIRECTORIES FOR EACH PANEL. ALL PANEL DOORS MUST BE KEYS.

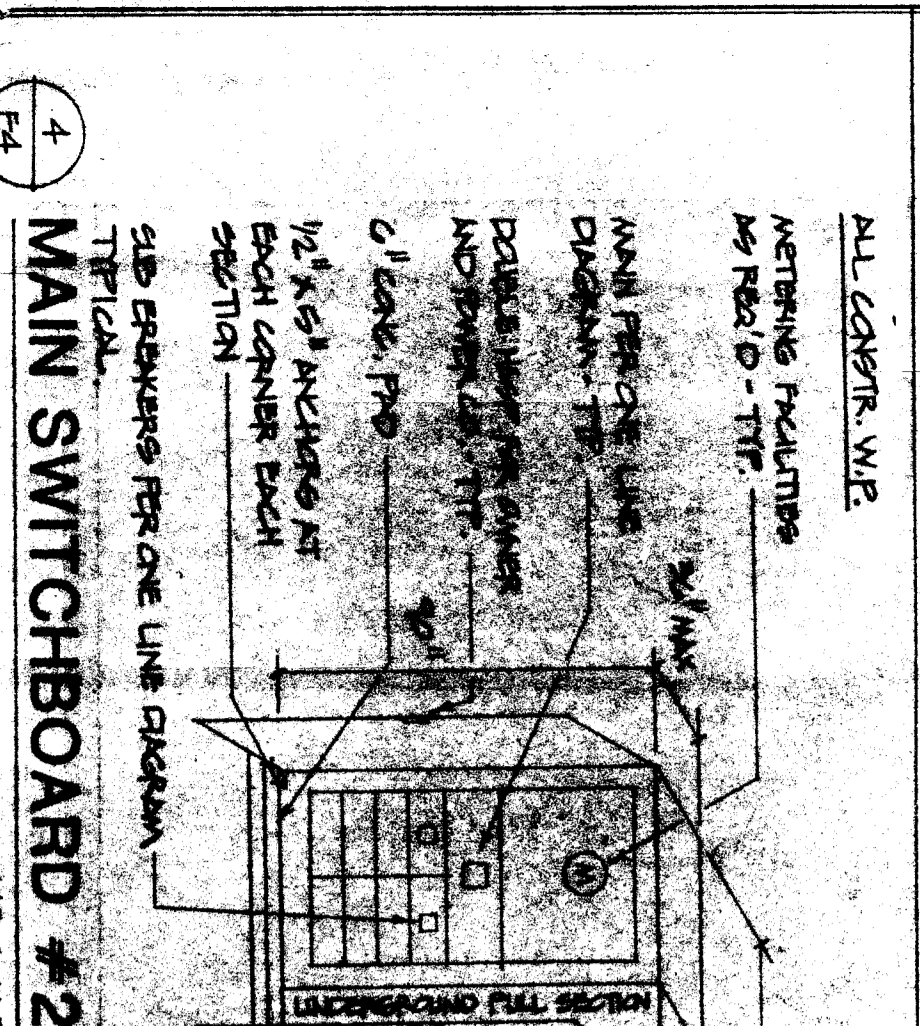
E4 PANEL REPLACEMENT SCH. NO SCALE



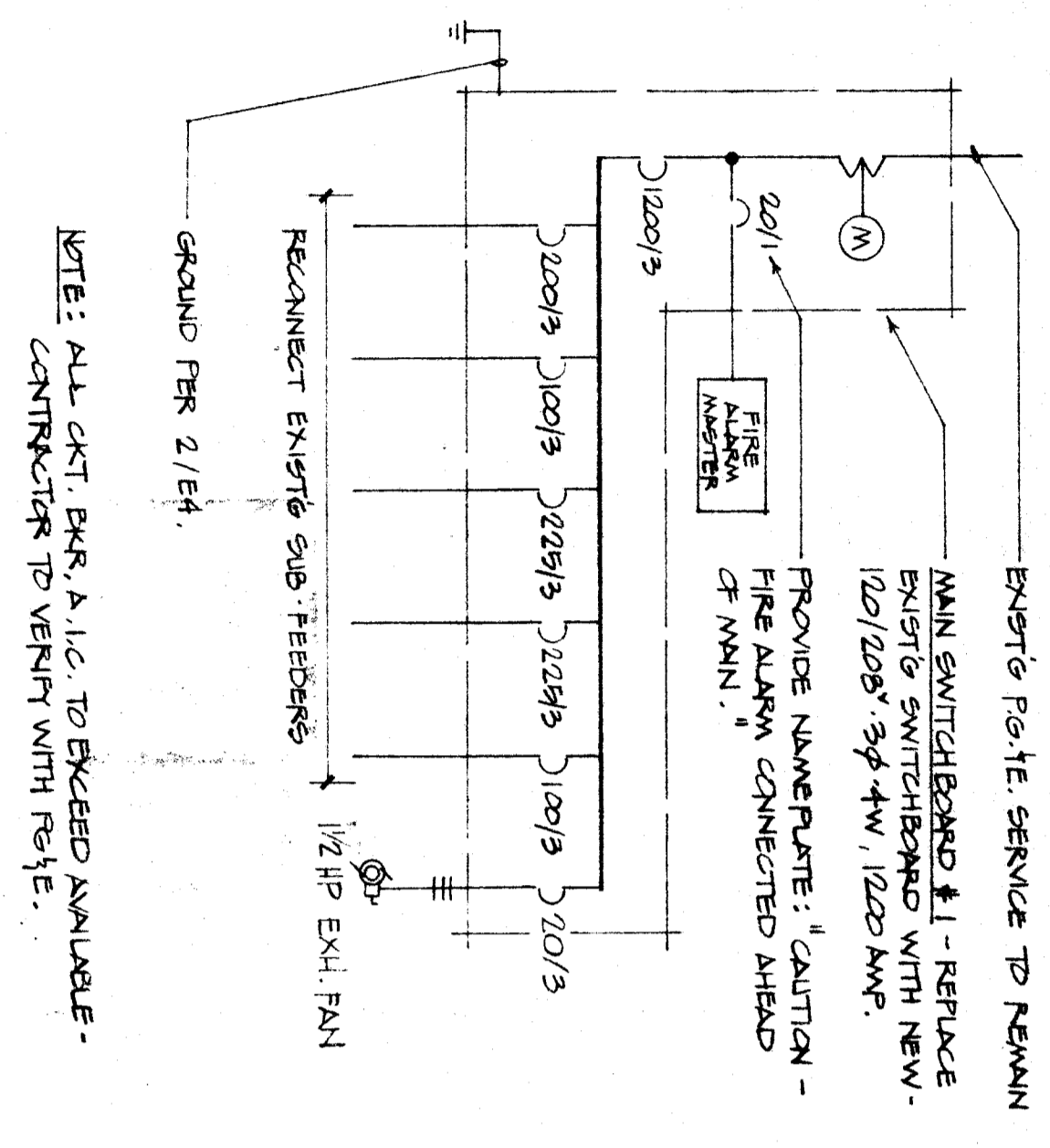
E4 GROUND'G ELECTRODE SYS. NO SCALE



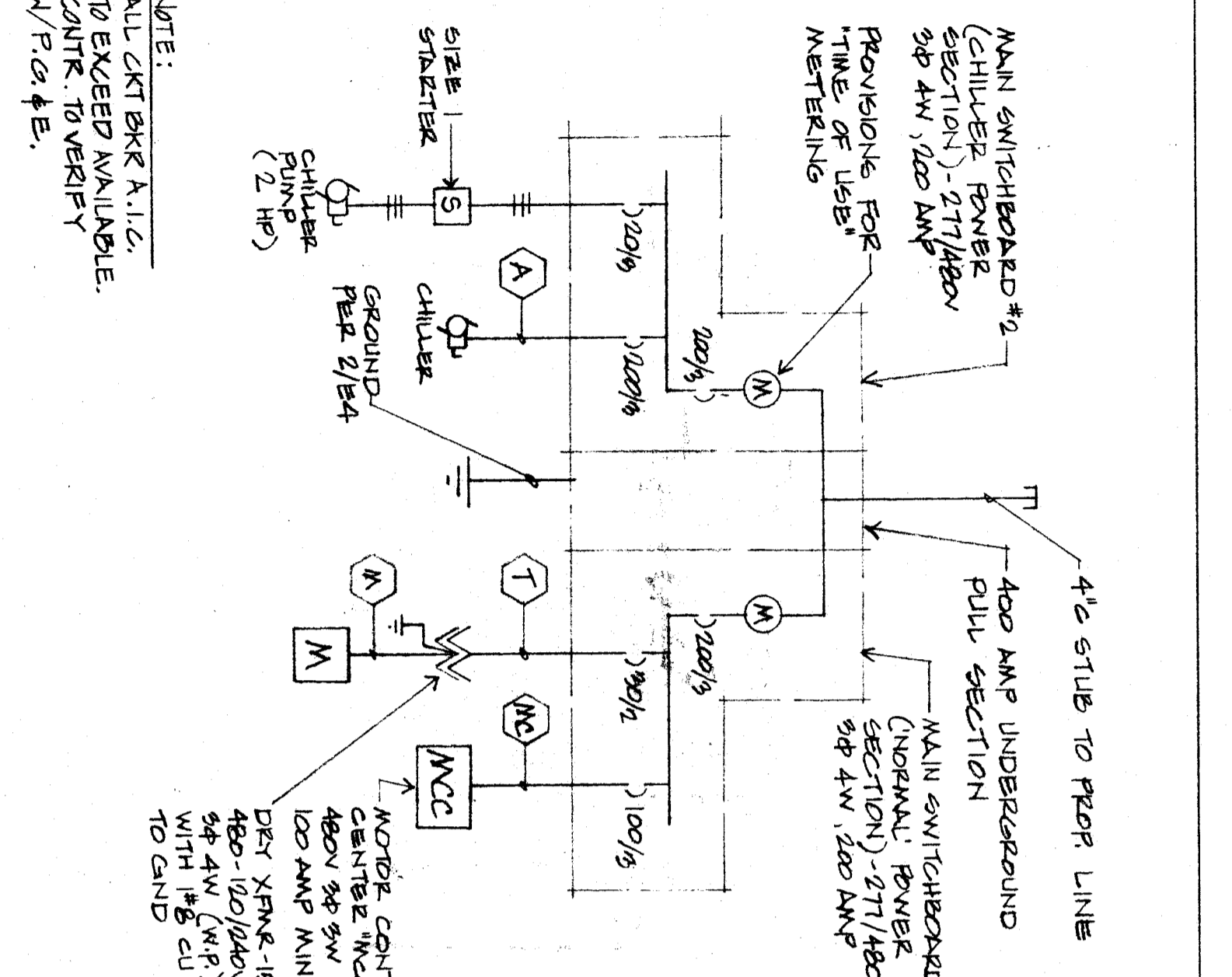
E4 MAIN SWITCHBOARD #1 NO SCALE



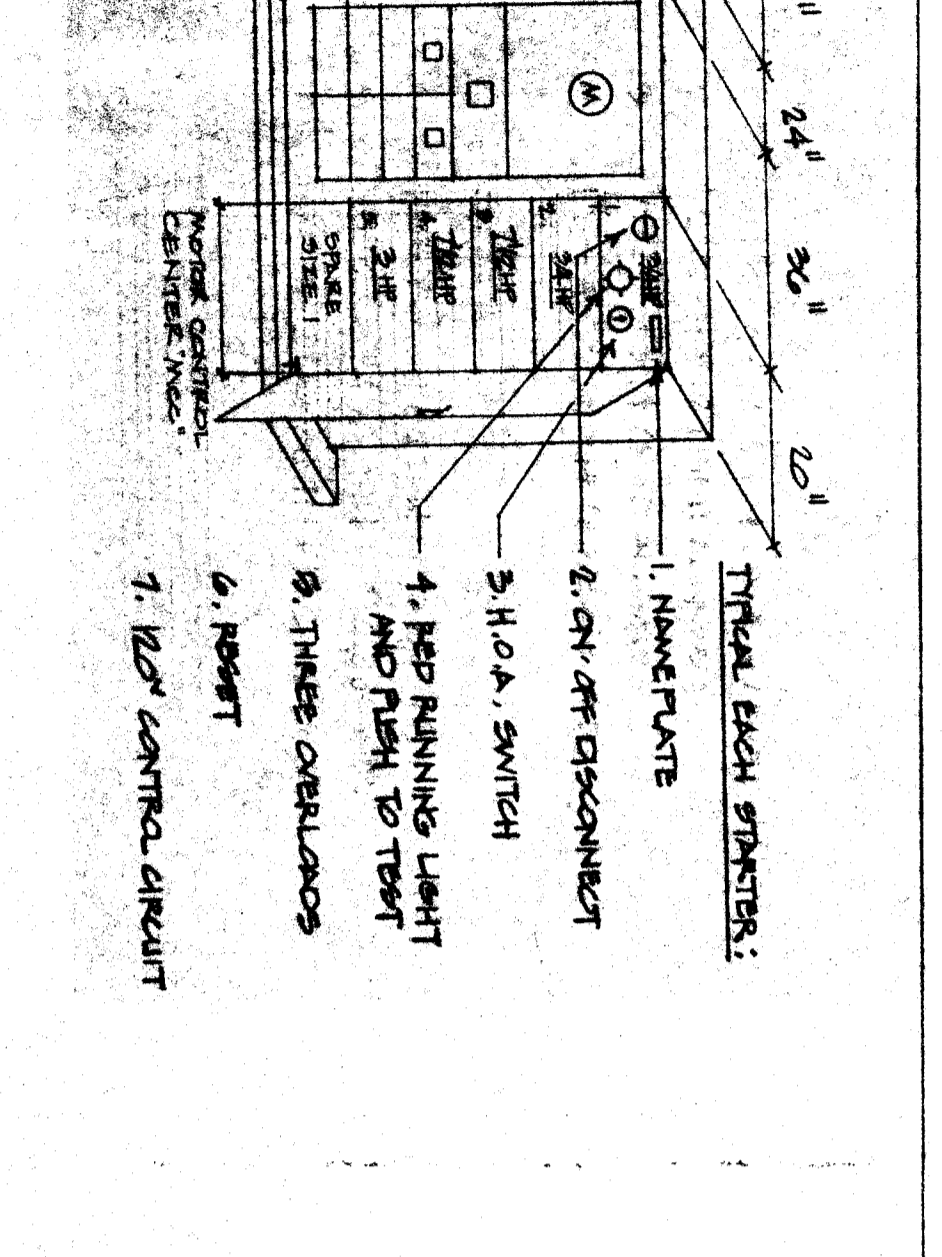
E4 MAIN SWITCHBOARD #2 NO SCALE



E4 ONE LINE DIAGRAM (EXISTING MAIN SWITCHBOARD #1) NO SCALE

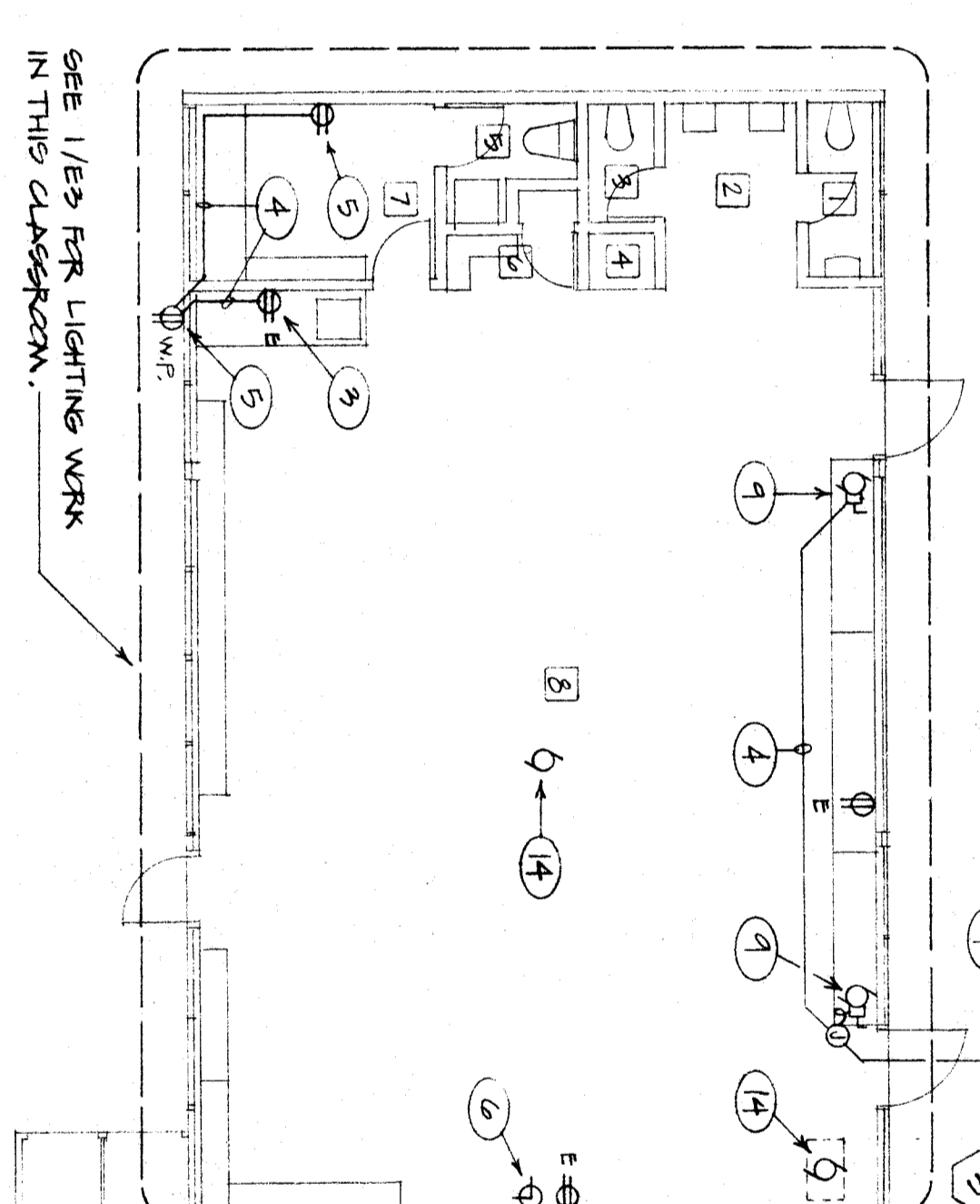


E4 ONE LINE DIAGRAM (NEW MAIN SWITCHBOARD #2) NO SCALE



FEEDER SCHEDULE

NO.	TYPE	SIZE	LENGTH	NOTES
1	1/2" C. 4#12	12'		1/2" C. 4#12
2	1/2" C. 4#12	12'		1/2" C. 4#12
3	1/2" C. 4#12	12'		1/2" C. 4#12
4	1/2" C. 4#12	12'		1/2" C. 4#12

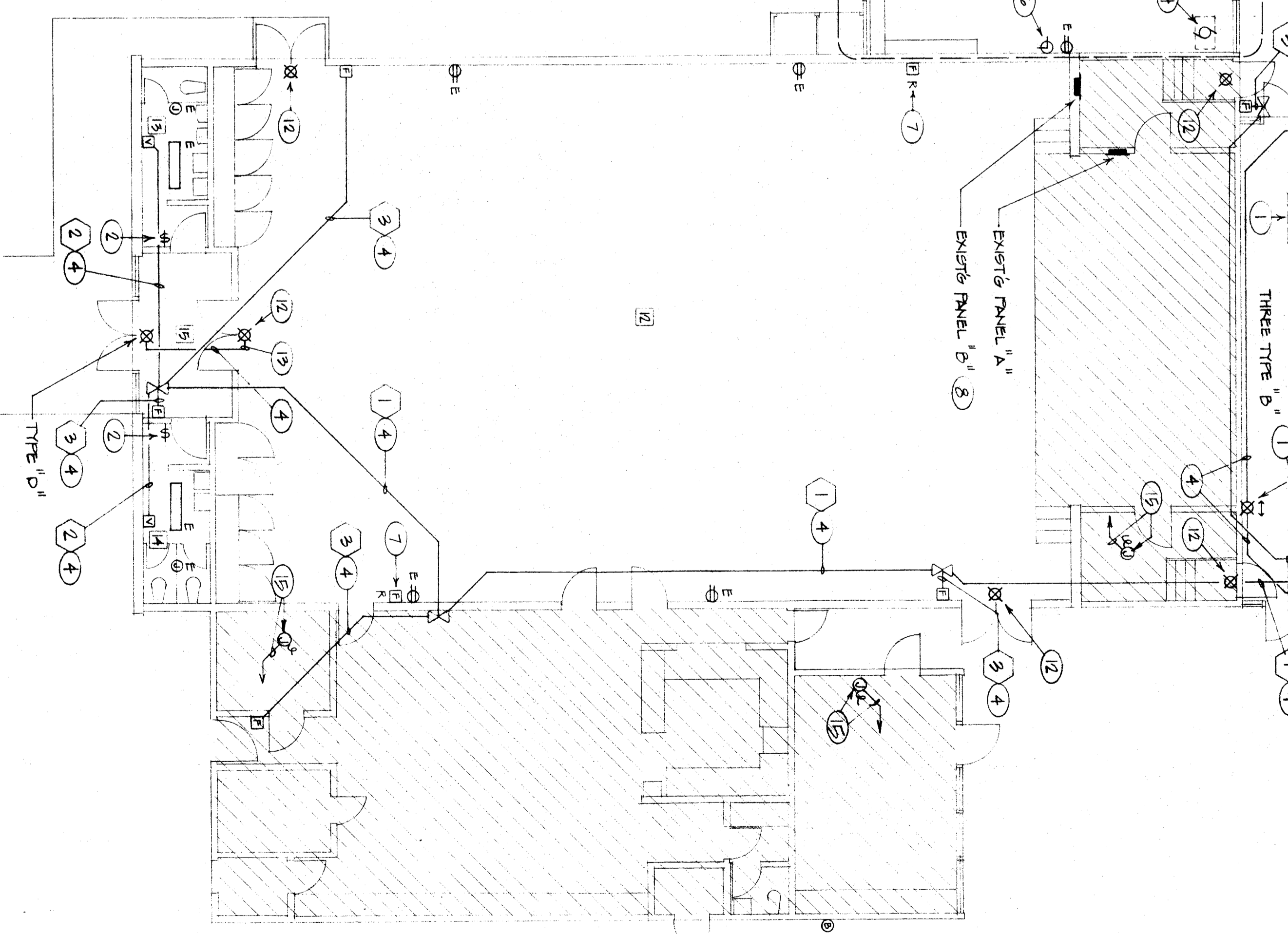


NOTES (THIS SHEET ONLY)

- REMOVE EXISTING SURFACE MOUNTED FLUORESCENT FIXTURE. RE-ROUTE AND RECONNECT ANY FEED-THRU CIRCUITS. PULL OUT ANY IDLE WIRE.
- REPLACE SWITCH(ES) WITH NEW. PROVIDE NEW COVER PLATE.
- EXISTING CONV. OUTLET TO REMAIN. EXTEND EXISTING CIRCUIT TO NEW OUTLET(S) AS SHOWN.
- RUN NEW FEED CONCEALED IN ATTIC/WALLS. WHERE NOT POSSIBLE CONVERT TO SURFACE RACEWAY (MINIMUM #700). PAINT TO MATCH ADJACENT SURFACE.
- NEW CONVENIENCE OUTLET AT +12".
- RELOCATE EXISTING CLOCK TO CLEAR NEW CEILING. PROVIDE CONDUIT, WIRE AND BOX AS REQUIRED (MATCH EXISTING). BLANK OFF EXISTING BOX. CONTRACTOR MAY FLUSH IN DEVICE OR SURFACE MOUNT, WITH CONCEALED CONDUIT TO EXISTING BOX AT CONTRACTOR'S OPTION.
- REMOVE EXISTING FIRE ALARM DEVICE. BLANK OFF BOX. PULL OUT IDLE WIRE. (NOTE: EXISTING WIRING RUNS IN SAME CONDUIT AS CLOCK WIRING. VERIFY ROUTE AT SITE.) REMOVE ANY EXPOSED EMPTY CONDUIT. RE-PULL EXIST'G CONDUCTORS REMAINING AS FEEDS TO 15/1 BREAKERS. OLD LIGHTING CIRCUITS FOR KINDERGARTEN. PROVIDE 3 NEW 20/1 BREAKERS (TWO FOR KINDERGARTEN LIGHTING, ONE FOR NEW MECH. EQUIPMENT.)
- CONNECT UNIT VENTILATOR - SEE MECH. DRAWINGS.
- CONNECT TO ONE NEW 20/1 BREAKER IN EXIST'G PANEL - SEE 2.
- SAVE AS 7) EXHIBIT WIREWOUND #1200 IF RECD.
- REPLACE EXIST'G EXHIBIT LIGHT WITH NEW TYPE "D".
- PICK UP EXIST'G EXHIBIT CIRCUIT AND EXTEND TO NEW FIXTURE.
- DISCONNECT EXIST'G MECH. EQUIP. BEING REMOVED (SEE MECH. PLANS). RE-ROUTE AND RECONNECT ANY FEED-THRU CIRCUITS. PULL OUT ANY IDLE WIRE. REMOVE ANY EXPOSED EMPTY CONDUIT.
- CONNECT NEW CONTROL WIRE (20V) EXIST'G MECH. EQUIP. (SEE MECH. PLANS) FOR LOCATION/REQ'D. CONTRACTOR TO VERIFY LOCATION @ SITE) CONCEAL FEED PER 4.



ELECTRICAL PLAN - BLDG. "A3"



DATE: 6/23/89
REVISIONS

WILLIAM PENN SCHOOL MODERNIZATION
BAKERSFIELD CITY SCHOOL DISTRICT
BAKERSFIELD, CALIFORNIA

APPROVED
Department of General Services
Office of the State Architect
FEB 27 1990
Structural Safety Section
Checked By

CONSULTING ENGINEERING, INC.
Consulting Electrical Engineer
114 W. Main St., Rm. 213-217
Bakersfield, California 93301
Phone: (805) 321-1111
FAX: (805) 321-1112

job number
8711

sheet number
E-4

115 19f
bakersfield, ca 93301 (805) 322-1863