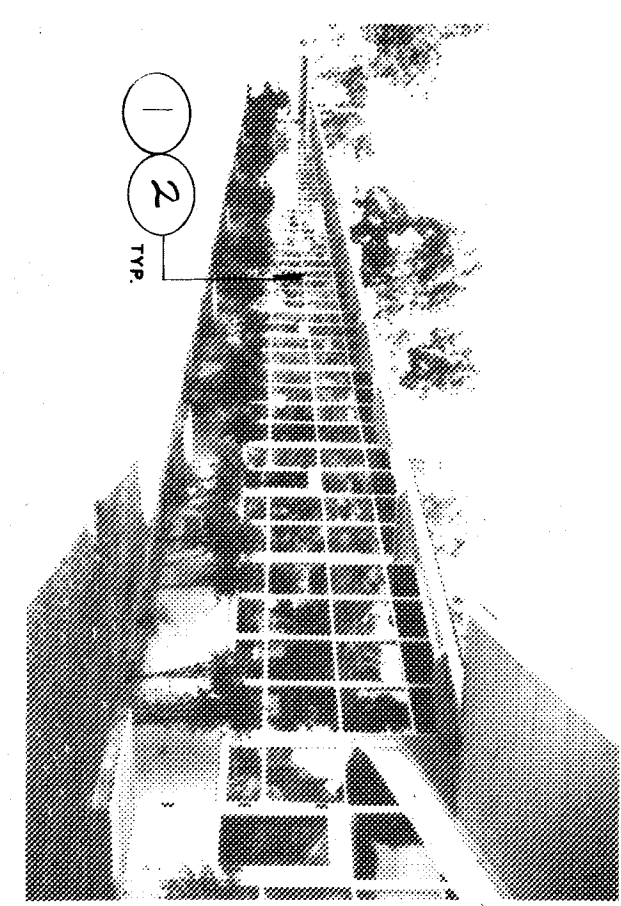


KEY NOTES 6/11 PHOTO

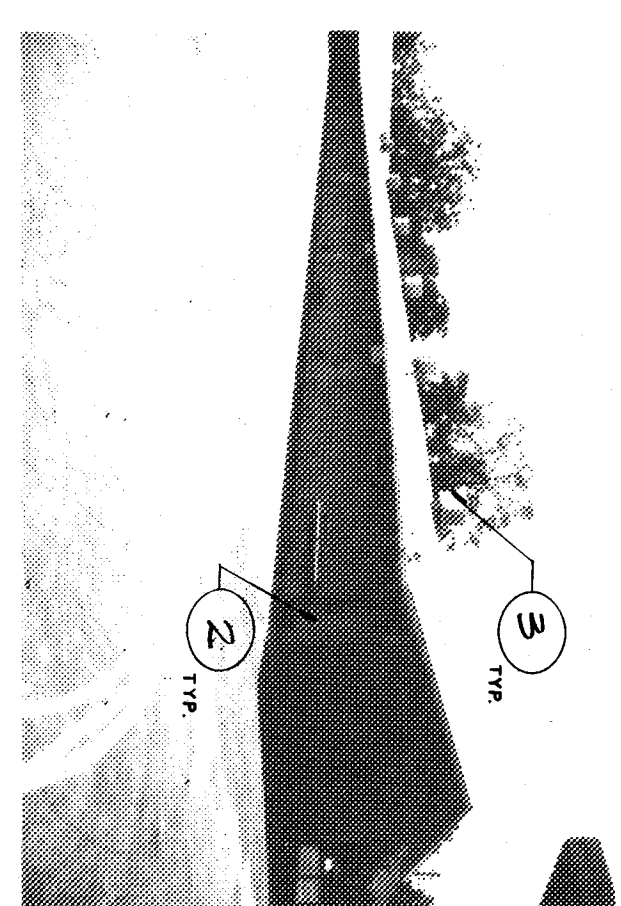
NOTES LISTED IN THIS COLUMN WHICH ARE NOT INDICATED ON THIS SHEET SHALL BE OBSERVED. COMPLETE FINISH AND REPAIR OF WORK SHALL BE THE RESPONSIBILITY OF THE CONTRACTOR. FOR ACTUAL EXISTING CONDITIONS PRIOR TO BEING, FABRICATION ARE TYPICAL UNLESS OTHERWISE INDICATED.

LEGEND

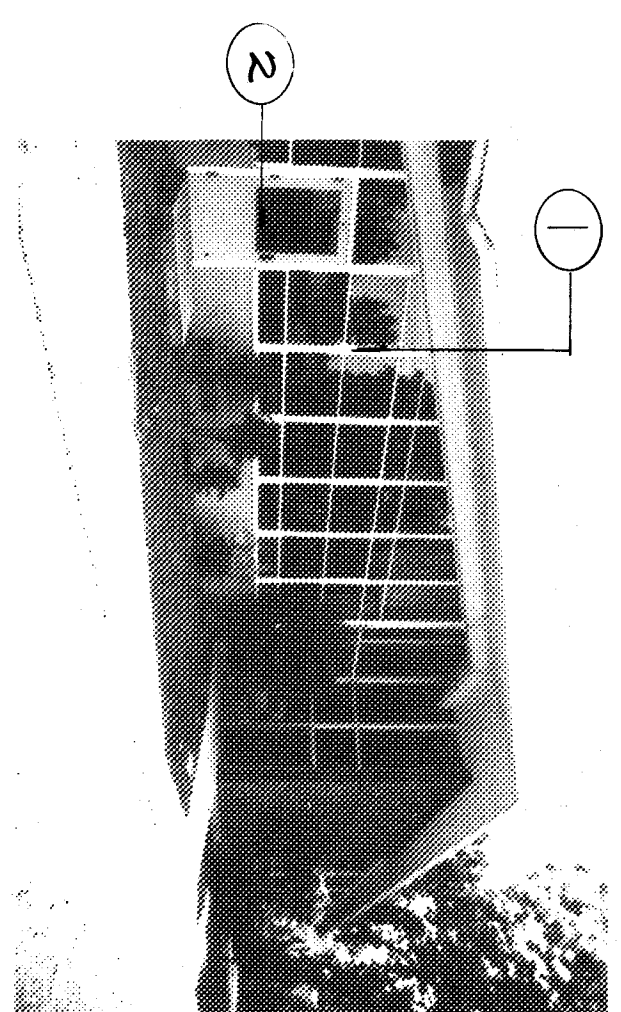
- (N) - NEW
- (R) - REPAIR
- (D) - DEMOLITION
- AS SHOWN, DETAILED SPECIFIED, AND
- 1. (R) GLAZING SYSTEM TO BEAM.
- 2. (R) DOOR REFER TO DOOR SCHEDULE.
- 3. (R) MECHANICAL UNIT REFER TO MECHANICAL PLANS, TO BEAM.
- 4. (R) TO BEAM.



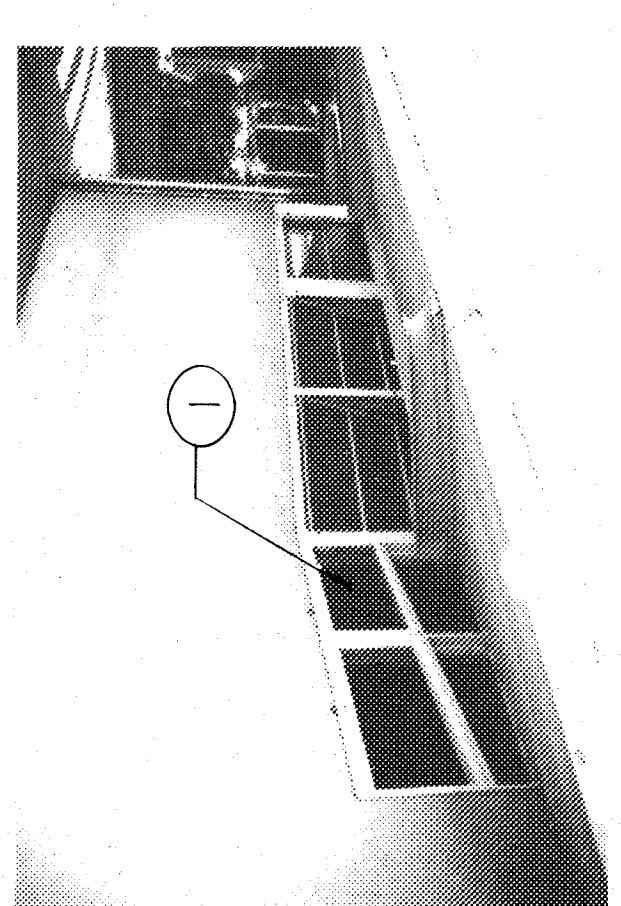
UNIT A1 - NORTH ELEVATION



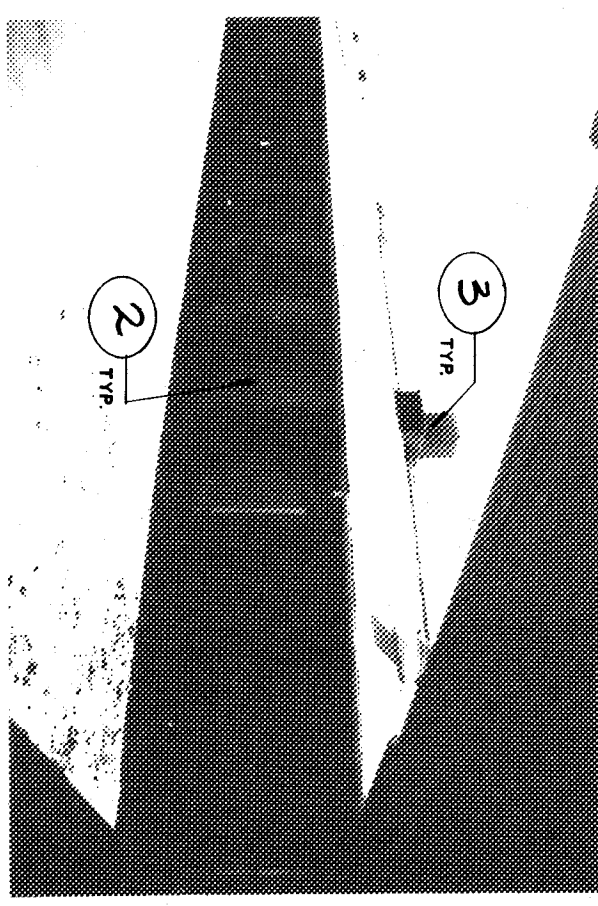
UNIT A1 - EAST & SOUTH ELEVATION



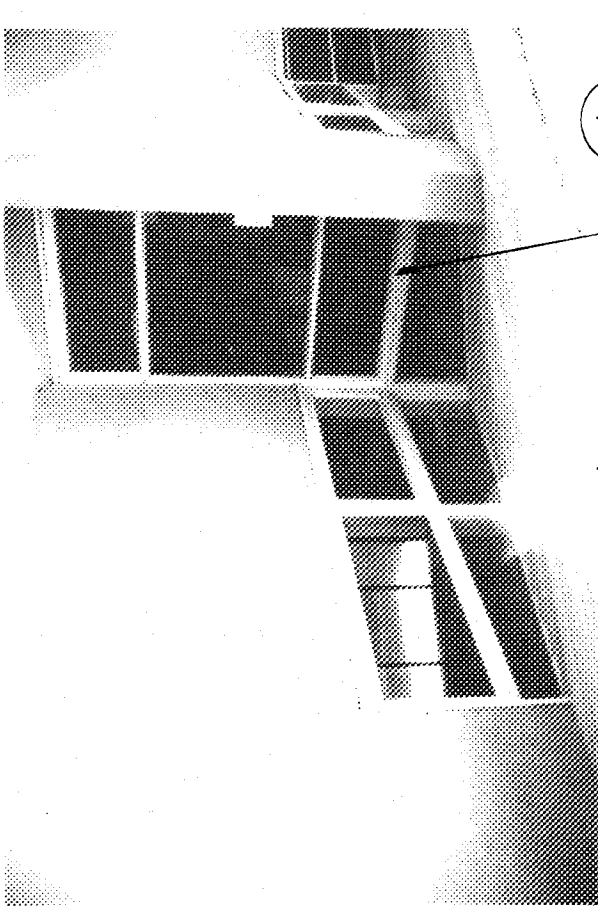
UNIT A2 - NORTH ELEVATION



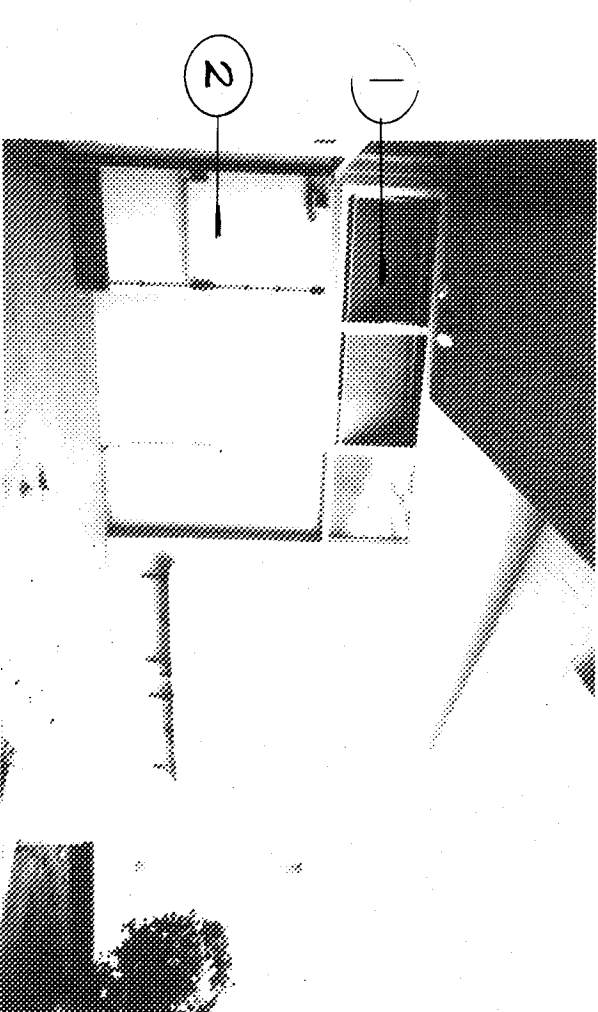
UNIT A2 - EAST ELEVATION (RESTROOMS)



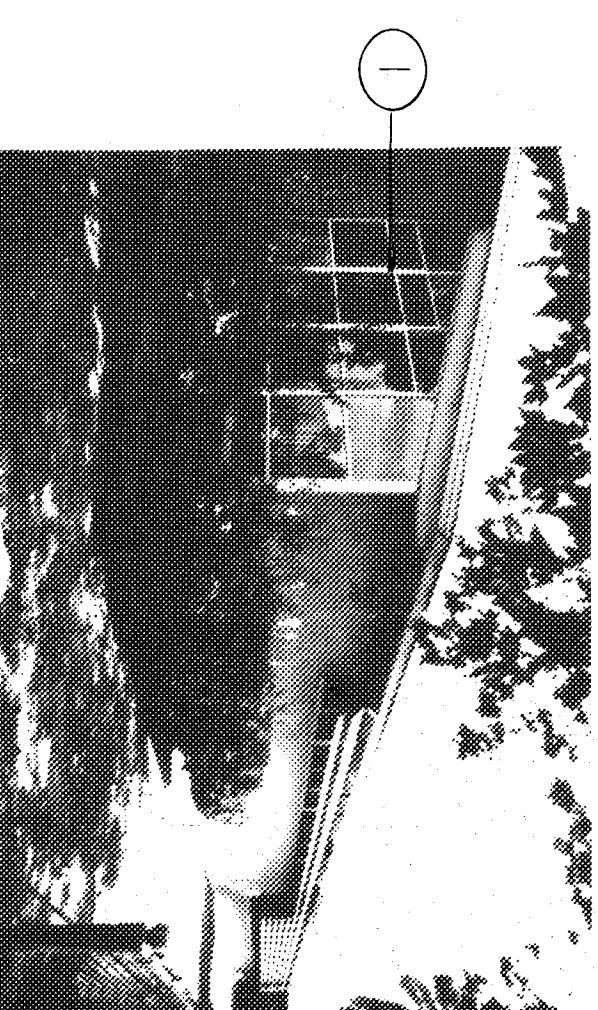
UNIT A2 - EAST ELEVATION



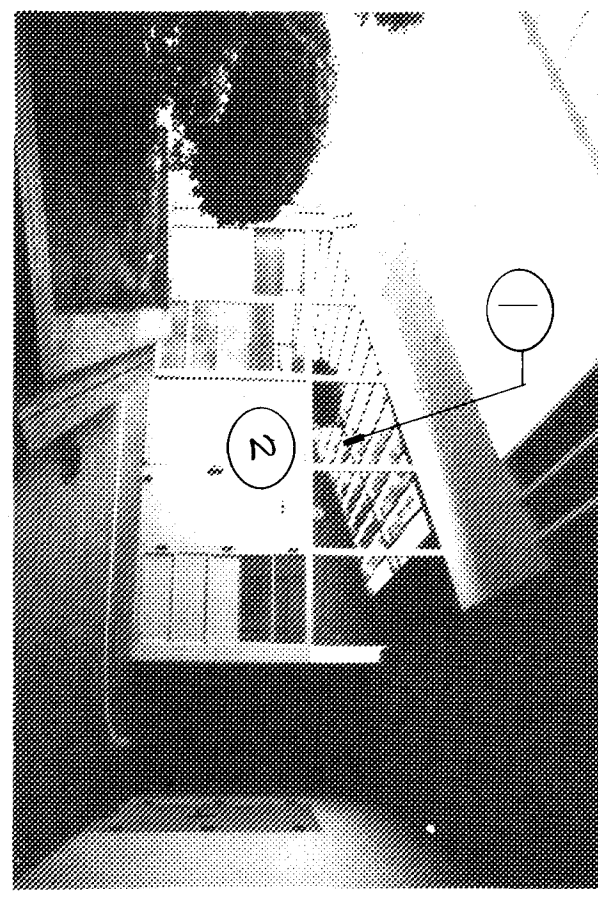
UNIT A2 - EAST ELEVATION (CLASSROOM TYP.)



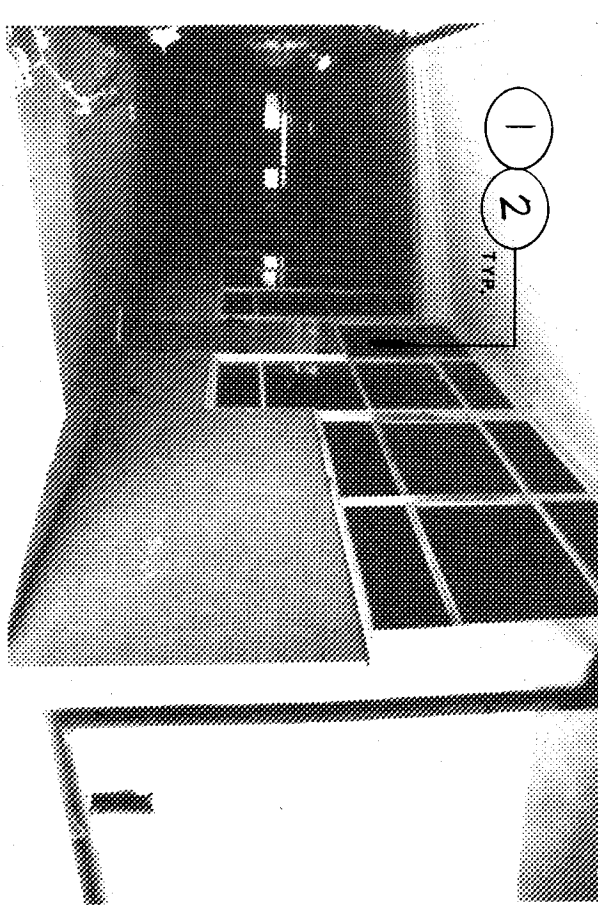
UNIT A2 - SOUTH ELEVATION



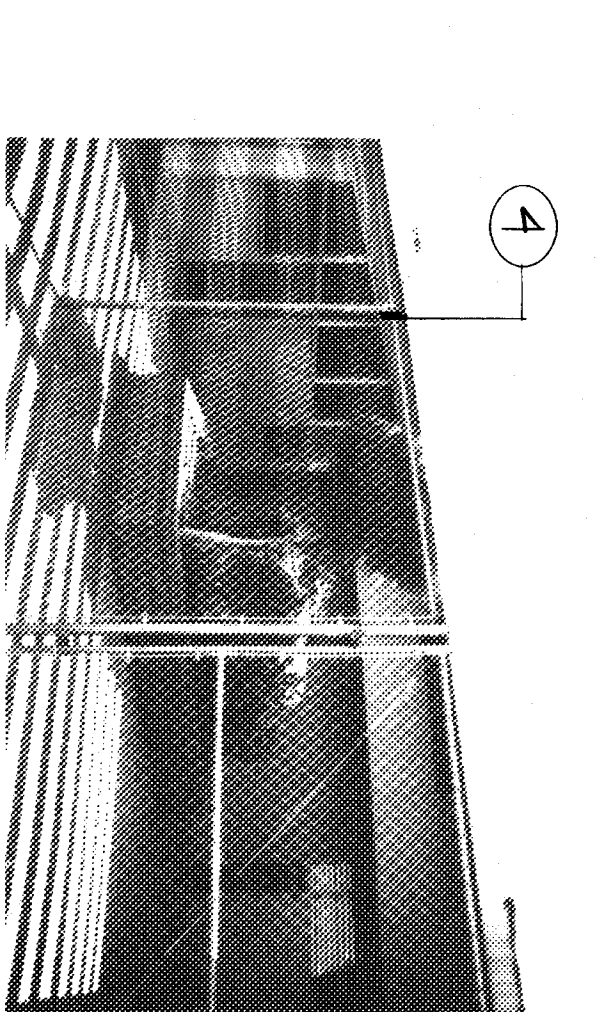
UNIT A2 - WEST ELEVATION



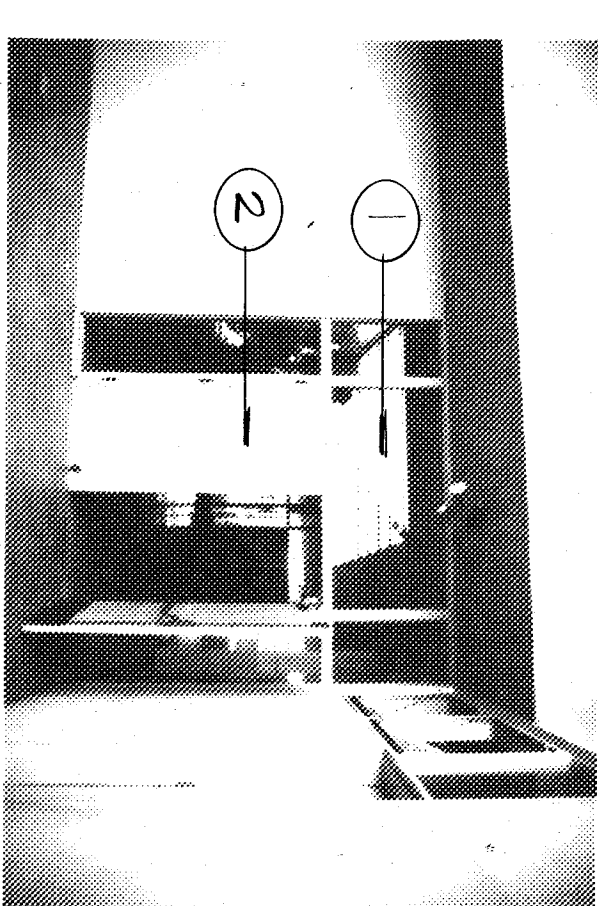
UNIT A3 - NORTH ELEVATION



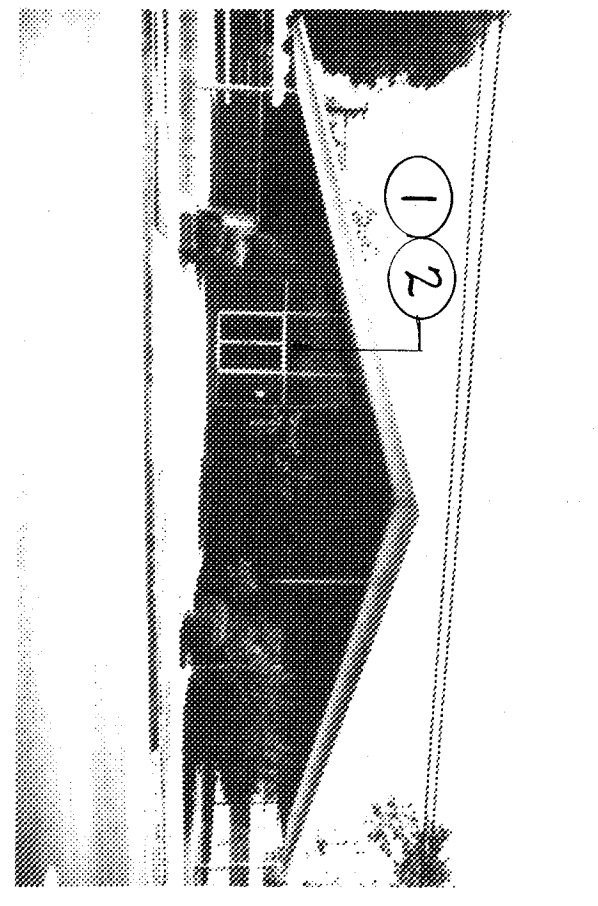
UNIT A3 - NORTH ELEVATION (KINDERGARTEN)



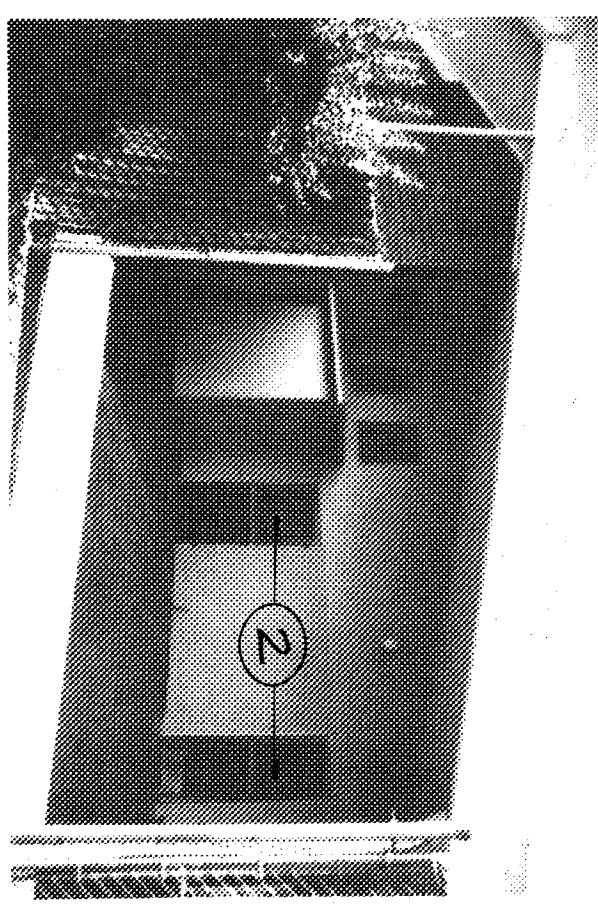
UNIT A3 - EAST ELEVATION



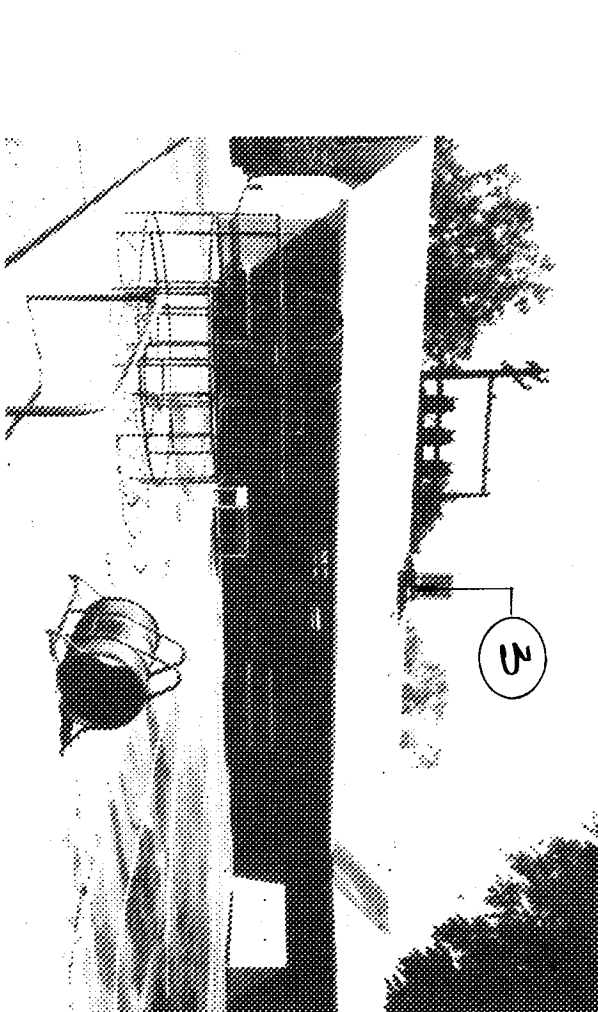
UNIT A3 - EAST ELEVATION



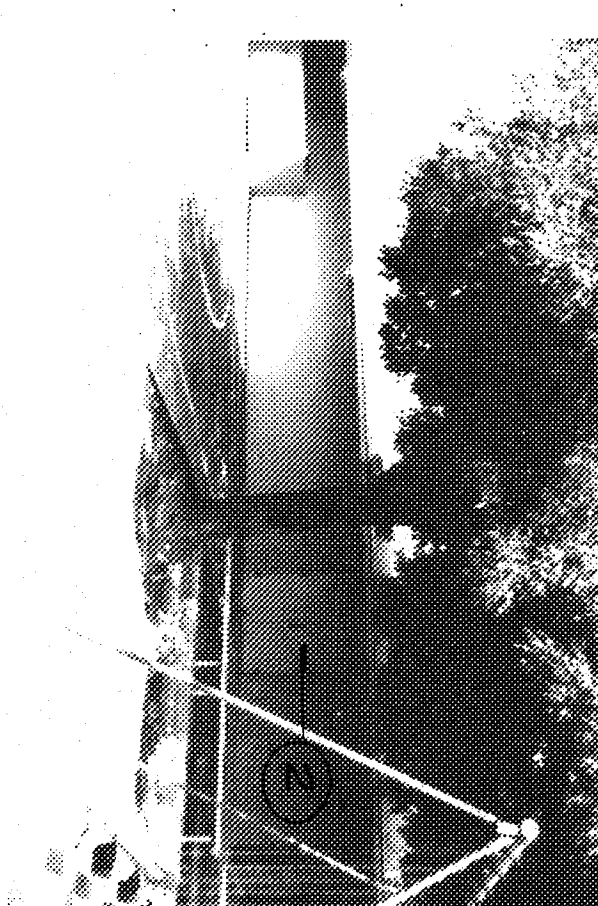
UNIT A3 - SOUTH ELEVATION



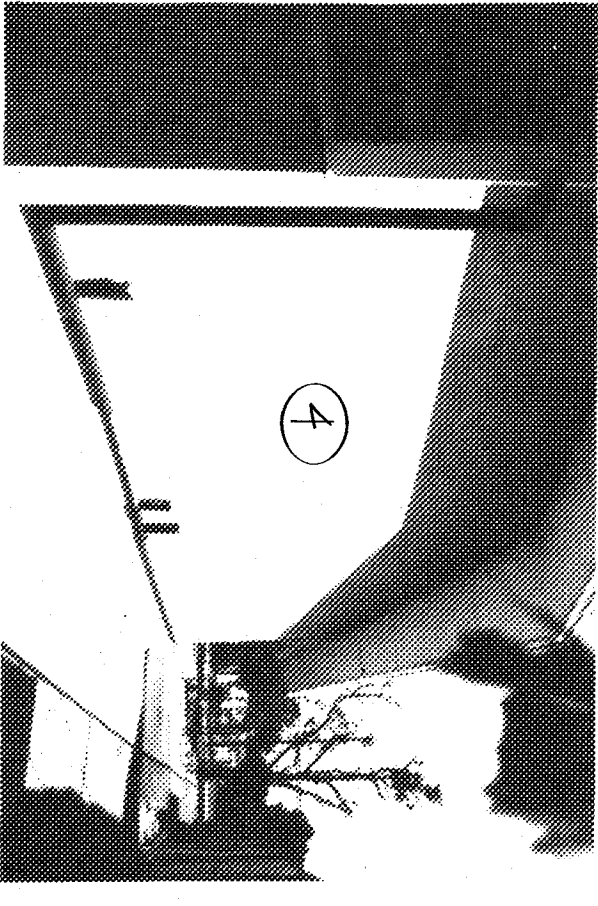
UNIT A3 - SOUTH ELEVATION



UNIT A3 - SOUTH ELEVATION (KINDERGARTEN)



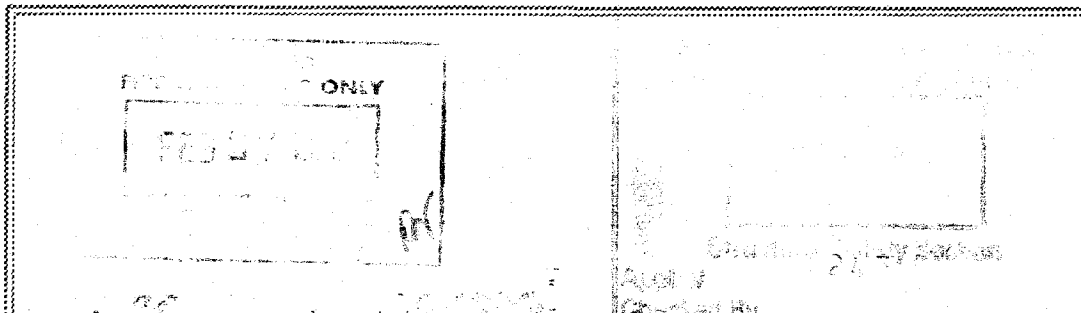
UNIT A3 - WEST ELEVATION



UNIT A3 - WEST ELEVATION (KINDERGARTEN)

DATE 6/23/89 REVISIONS

WILLIAM PENN SCHOOL MODERNIZATION
BAKERSFIELD CITY SCHOOL DISTRICT
BAKERSFIELD, CALIFORNIA



Shirley Wendt ARCHITECT A.P.A.
architects • planners

Kendrick Design Group

job number 8711

sheet number A.19

52439 04/84