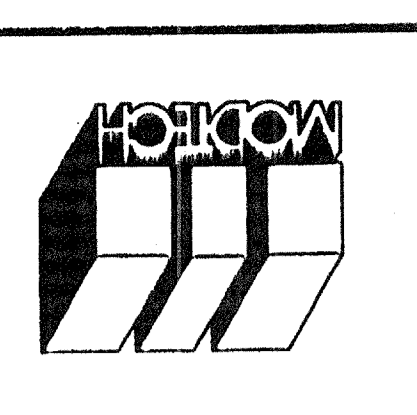


Electrical Engineer's Seal  
 Mechanical Engineer's Seal  
 Structural Engineer's Seal  
 Architect's Seal  
 PROFESSIONAL SEAL  
 S. K. MISRA  
 No. 5342  
 State of California  
 02-08-99

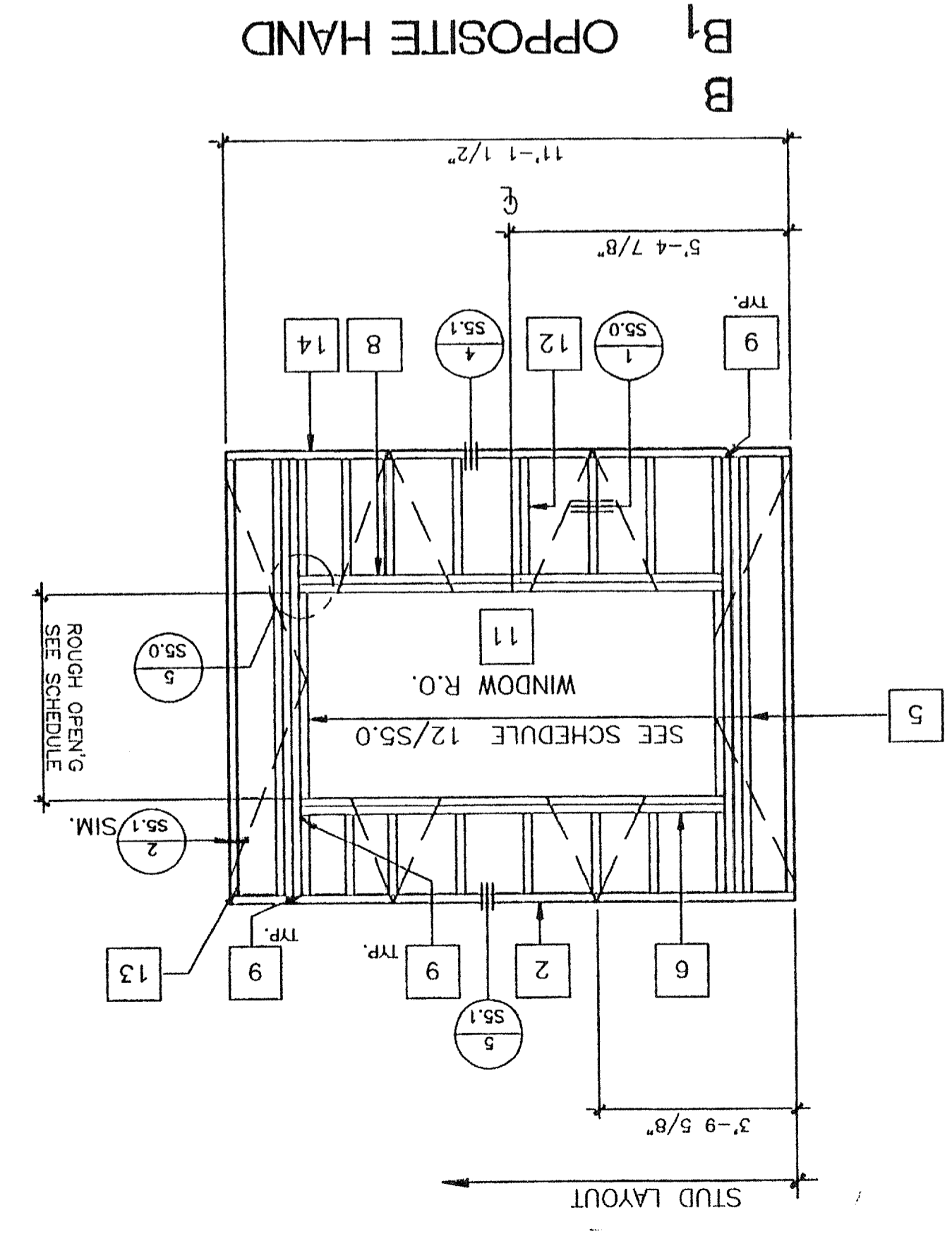
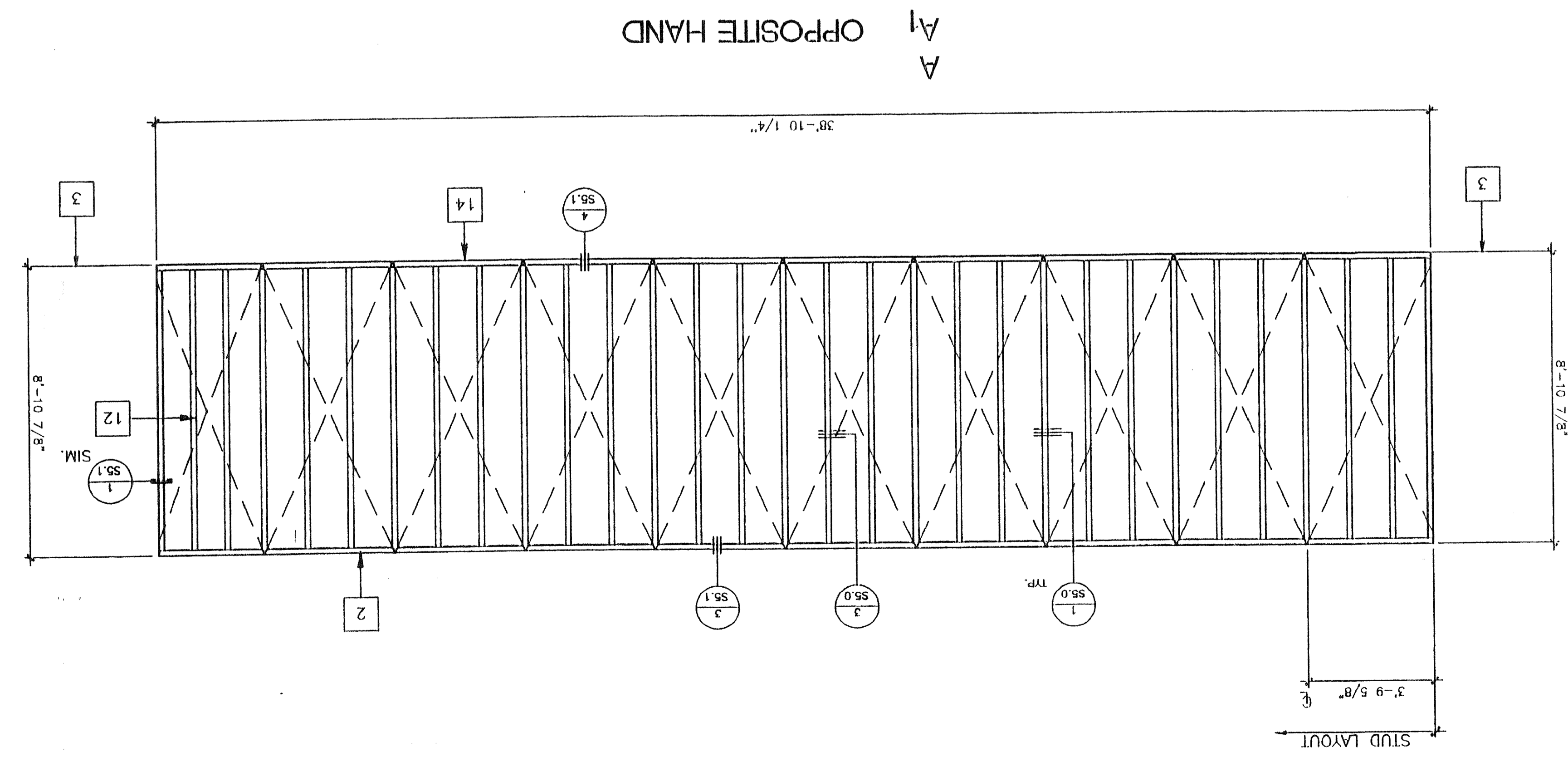
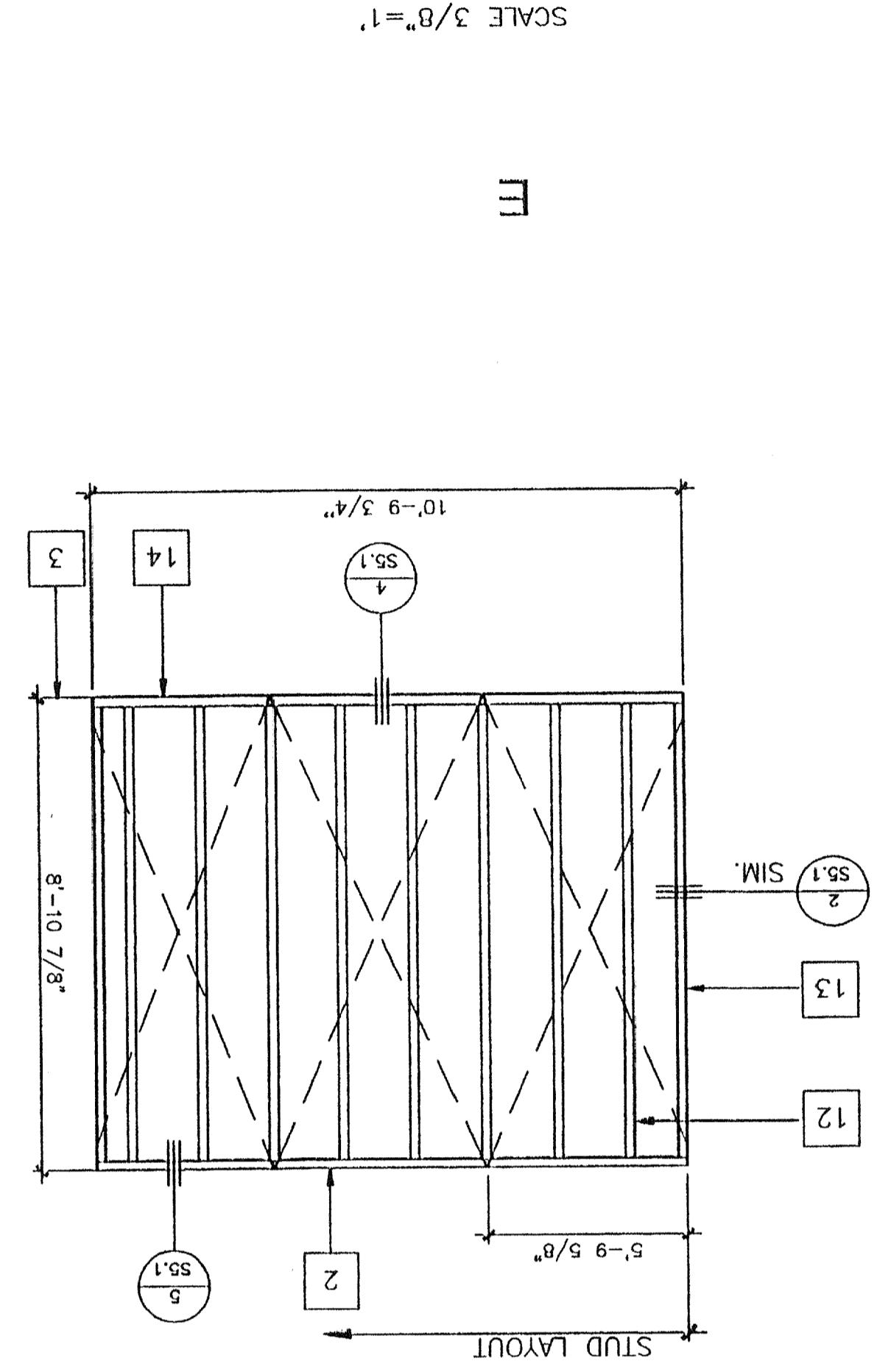
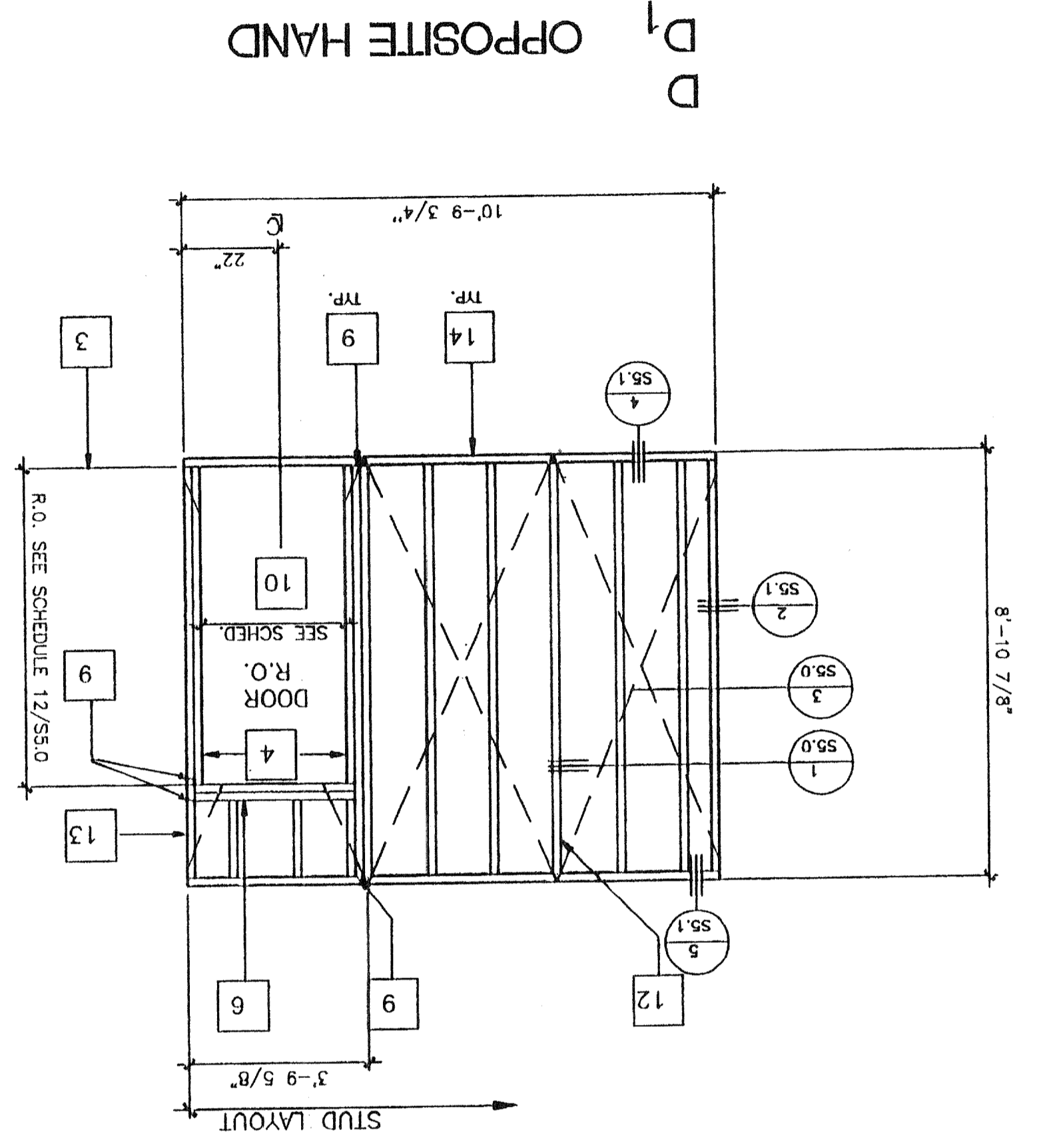
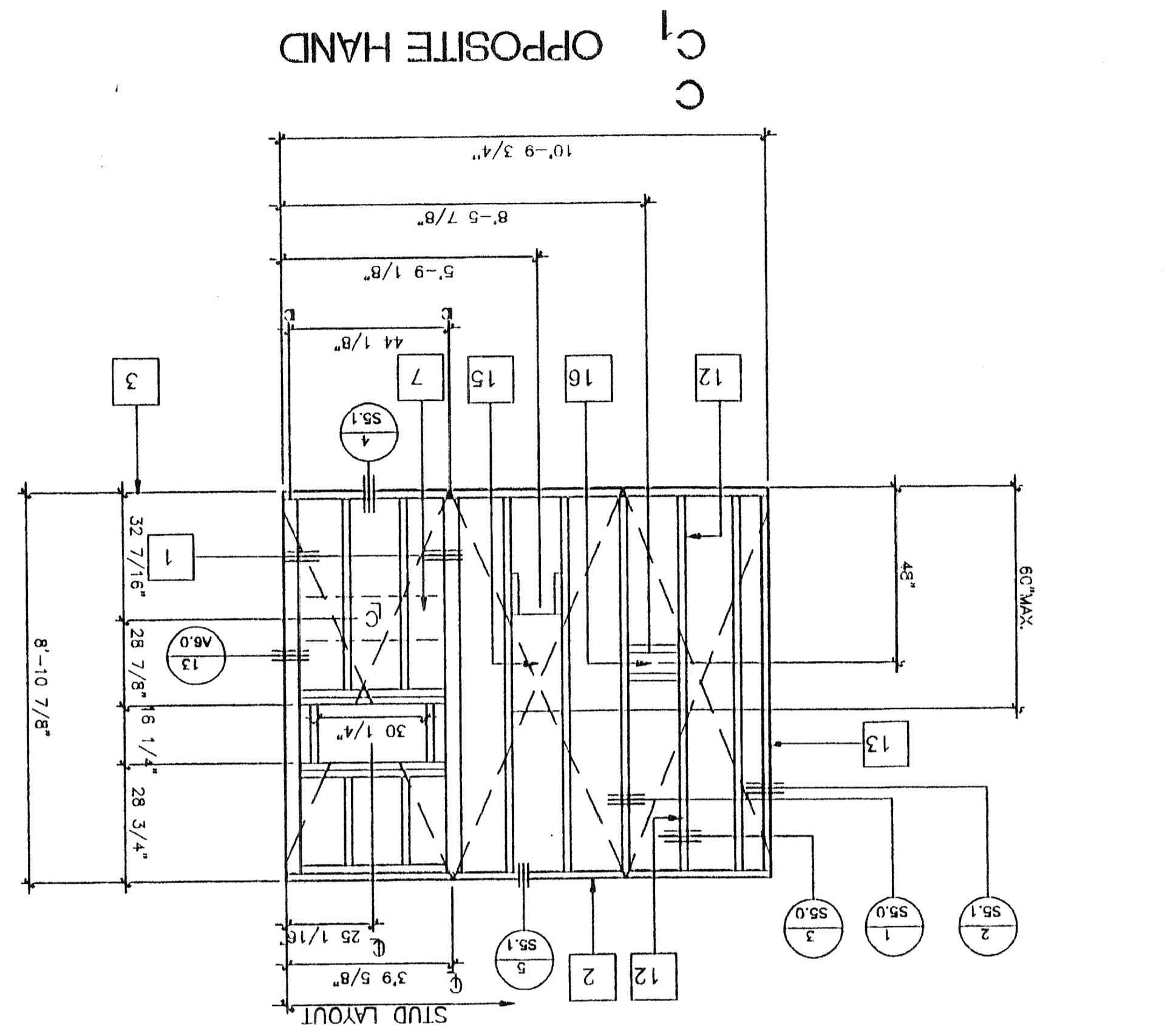
IDENTIFICATION STAMP  
 DIV. OF THE STATE ARCHITECT  
 OFFICE OF REGULATION SERVICES  
 PC-270  
 DATE: FFM-1-9-1999  
 REVISED



**MODTECH INC.**  
 2830 BARRETT AVENUE  
 PERRIS, CALIF. 92572  
 PH (909) 943-4014  
 FAX (909) 940-0427

**WALL FRAMING**  
 PROJECT NUMBER: © MODTECH, INC. 1999

**S4.0**  
 DRAWN BY: RFE  
 CHECKED BY: SS  
 DATE: 2-2-99  
 PROJECT NO.



**KEY NOTES**

- 1 4 X 4 POST ALT. USE 2-2X4 W/FACE NAILING
- 2 2X4 TOP PLATE
- 3 FINISH FLOOR
- 4 (SEE SCHEDULE FOR QUANTITY SHT SS.1) 2X4 FULL HGT. KING STUDS AND 2X4 TRIMMER
- 5 FULL HEIGHT STUDS AND 1-2X4 TRIMMER (SEE WINDOW SCHEDULE FOR JAMB STUDS REQUIRED)
- 6 SHEET SS.0.
- 7 26GA X 4" WIDE STRAP
- 8 WINDOW SILL PLATE (SEE SCHEDULE)
- 9 A 3/4 CLIPS AT HEADER & SILL TO FULL HGT. STUDS AND FULL HGT. STUDS TO TOP AND BOTTOM PLATES. SEE 4/SS.0
- 10 REQUIRED OPENING FOR A 3068 DOOR (SEE DETAIL 7/SS.0)
- 11 REQUIRED OPENING FOR A 8040 WINDOW (SEE DETAIL 6/SS.0)
- 12 2X4 STUD AT 16" O.C. TYPICAL
- 13 2X4 NAILER TYPICAL AT EACH END
- 14 2X4 SILL PLATE
- 15 FRAME FOR ELECTRICAL PANEL
- 16 THERMOSTAT LOCATION 4S BOX

PROJECT NO.

FILE PATH: PC270S4.0.DWG

REVISIONS  
 04 10/19/94  
 DATE: MAY 20 1999  
 04 10/15/27  
 DATE: SEP 07 1999