

PC-270

PROJECT NO.

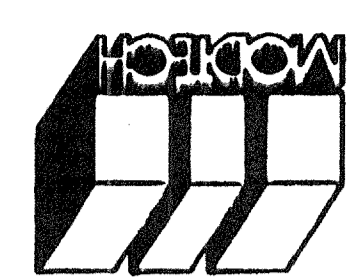
S1.0

MODTECH, INC.  
 PROJECT NO.  
 DRAWN BY: [Signature]  
 CHECKED BY: [Signature]  
 DATE: 2-2-99

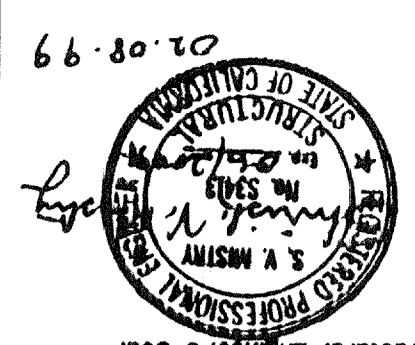
FLOOR FRAMING PLAN

PROJECT NUMBER: [Redacted] MODTECH, INC. 1999

MODTECH INC.  
 2830 BARRETT AVENUE  
 PERRIS, CALIF. 92572  
 PH (909) 943-4014  
 FAX (909) 940-0427



REVISIONS  
 PC-270  
 DATE: FEB 19 1999  
 REVISIONS



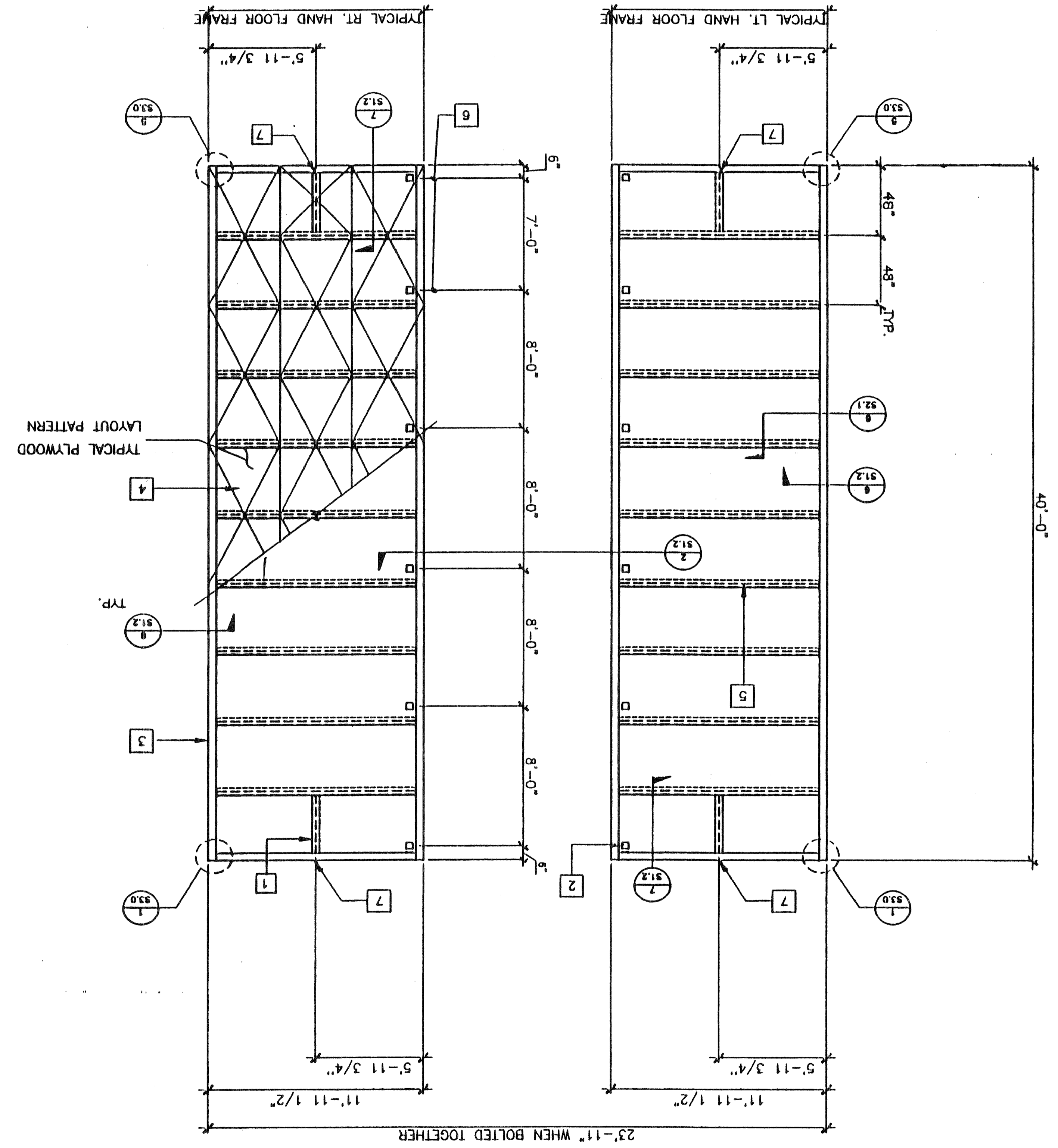
Architect's Seal  
 Structural Engineer's Seal  
 Mechanical Engineer's Seal  
 Electrical Engineer's Seal

REVISIONS

FLOOR FRAMING PLAN

FLOOR LIVE LOAD - 50 PSF

SCALE 1/4"=1'-0"



FLOOR JOIST TABLE	
LIVE LOAD	50 P.S.F.
6 3/8 x 2 1/2 x 12GA	48" O.C.
50+20 P.S.F.	32" O.C.

NOTES

1. FOR L HAND & R HAND FRAME SEE S1.0
2. WELDING FIT-UP: OPENINGS = 1/2" OR 1/4" MIN
- FOR FULL PEN -T- AND -F-
- 1 = BASE METAL THICKNESS

- 1 6 3/8 x 2 1/2 x 12GA. BLOCKING AT MIDSPAN OF FLOOR HDR. TYPICAL
- 5" DIA HAND HOLES AT BOLT BM TO BM (12 PLACES) OPTIONAL 5" SQUARE HOLE
- C 7X9.8 PERIMETER CHANNEL (TYPICAL) SEE 5/S2.1
- PLYWOOD FLOOR SHEATHING: APA PS 1-83 1 1/8" THICK, STURD-I-FLOOR OR EQUAL W/48" O.C. SPAN RATING, ATTACHED W/10 X 1 3/4" SELF-TAPPING FLAT HEAD SCREWS AT 6" O.C. TO PERIMETER FRAME, AEROSMITH AKN 144.0175 DRIVE PINS AT 6" O.C. SUPPORTED EDGES AND 6" O.C. FIELD TO JOIST. (TYPICAL) SEE 10/S2.1
- 6 3/8 x 2 1/2 x 12GA. FLOOR JOIST AT 48" O.C. (SEE 2/S1.2)
- TYPICAL BOLT HOLE LOCATION (SEE 2/S1.2)
- 1" HOLE @ MID-DEPTH FOR HANDLING

KEY NOTES

REVISIONS  
 JUL 1 1999  
 04 101527  
 MAY 20 1999  
 04 101527  
 DATE SEP 2 1999

FILE PATH: PC270S10.DWG