

**KEY NOTES**

- 1 TS 2" x 2" x 14ga
- 2 TS 1 1/2" x 1/2" x 14ga (Fy = 39 KSI)
- 3 TS 1 1/4" x 1 1/4" x 14ga (Fy = 39 KSI)
- 4 TS 1" x 1" x 16ga WHEELCHAIR GUIDE
- 5 2 x 6 PT SILL PLATE
- 6 2 x 2 NAILER W/16d @ 12" OC
- 7 2 x RW HEADER BY DISTRICT.
- 8 6" x 10ga CONTINUOUS PLATE W/ #14 x 2" TEK SCREWS @ 9" OC INTO WOOD OR FOUNDATION BLOCKS OR #14 x 2" TEK SCREWS INTO METAL @ 9" OC
- 9 2" x 4" x 12ga BASE PLATE W/2-1/4" x 1" LAGS
- 10 6" x 10" x 12ga BASE PLATE @ RAMP TOE.
- 11 LOWER LANDING BY DISTRICT
- 12 SKIPPING PLYWOOD TO MATCH BUILDING SIDING. BLOCK FIELD AT EDGE CONNECTION TO U.S. USE #14 x 2" TEK SCREWS @ 6" OC (OPTIONAL)
- 13 12ga METAL DECK. NON-SLIP SURFACE. DESIGN COEFFICIENT OF FRICTION GREATER THAN 0.2. MAINTAINABLE FOR 1 YR. EXISTING BUILDING.
- 14 CAULKING
- 15 26 ga FLASHING
- 16 3/8" dia x 2" LONG MB W/NUT & WASHERS
- 17 PAVE BY DISTRICT.
- 18 RAMP BY MODTECH
- 19 FLUSH TRANSITION
- 20 12" MINIMUM BUILDING SERERATION
- 21 PROVIDE DIVERSION FOR WATER FROM DOWNSPOUT FOR THIS CONDITION BY DISTRICT
- 22 FOR LANDING DETAILS AND RAMP ATTACHMENT SEE 12/R1.0
- 23 FASTEN POSTS W/ 3/8" THRU BOLT. TYPICAL
- 24 2" WARNING STRIPES MAX 1" FROM EVERY STAIR NOSING. USE CONTRASTING COLOR.
- 25 TS 2 1/2" x 1 1/2" x 8ga ASTM A500 GRADE A

**REVISED**

IDENTIFICATION STAMP  
DIV. OF THE STATE ARCHITECTURE  
OFFICE OF REGULATION SERVICES

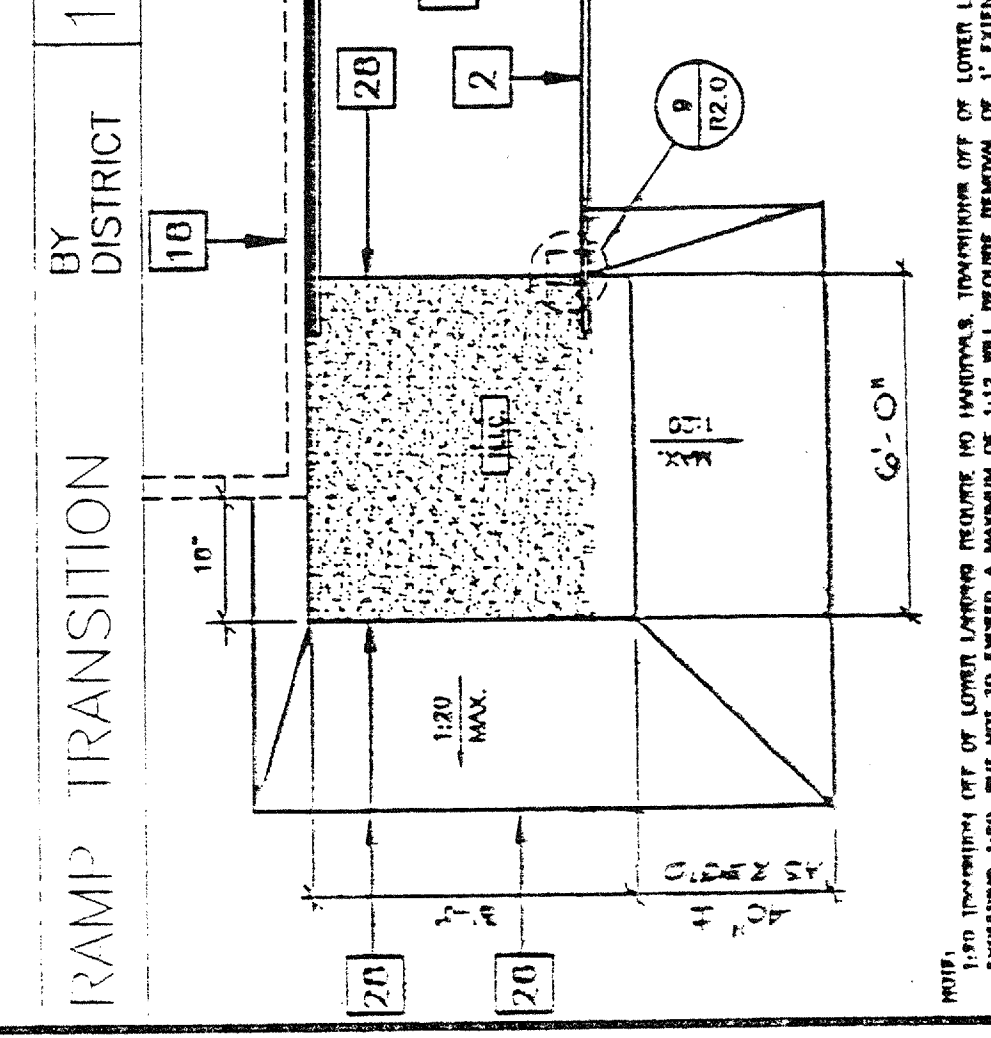
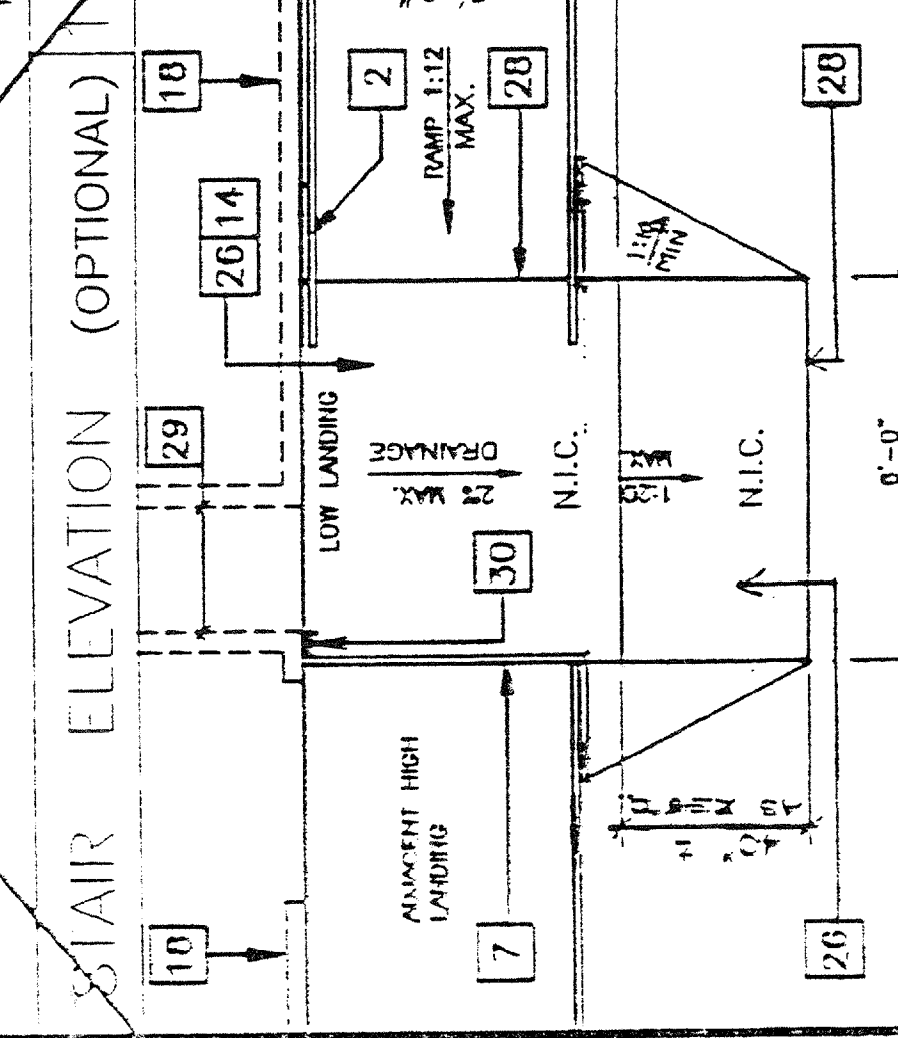
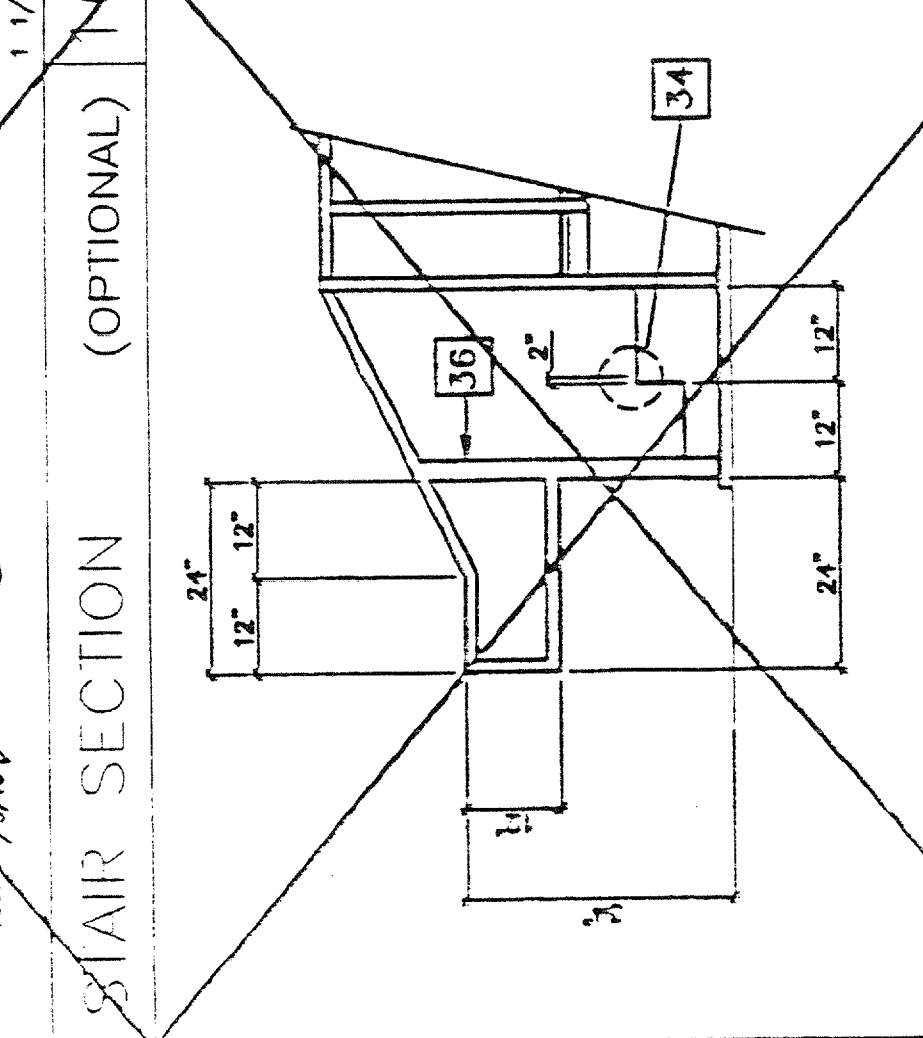
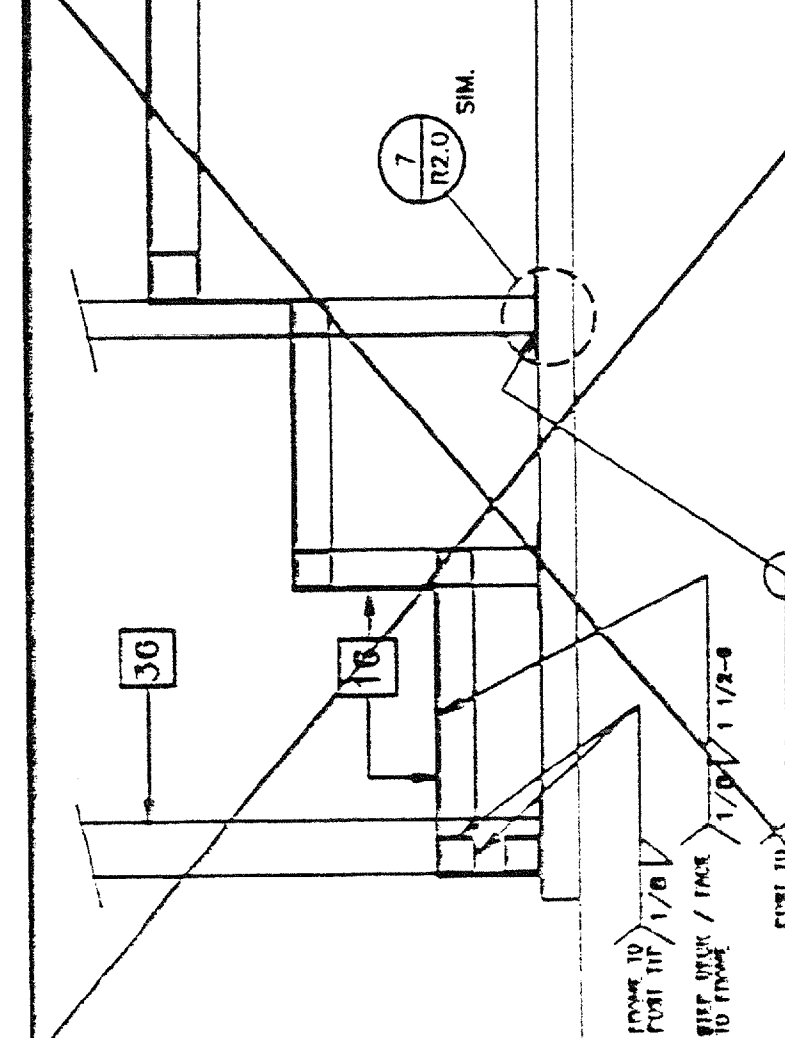
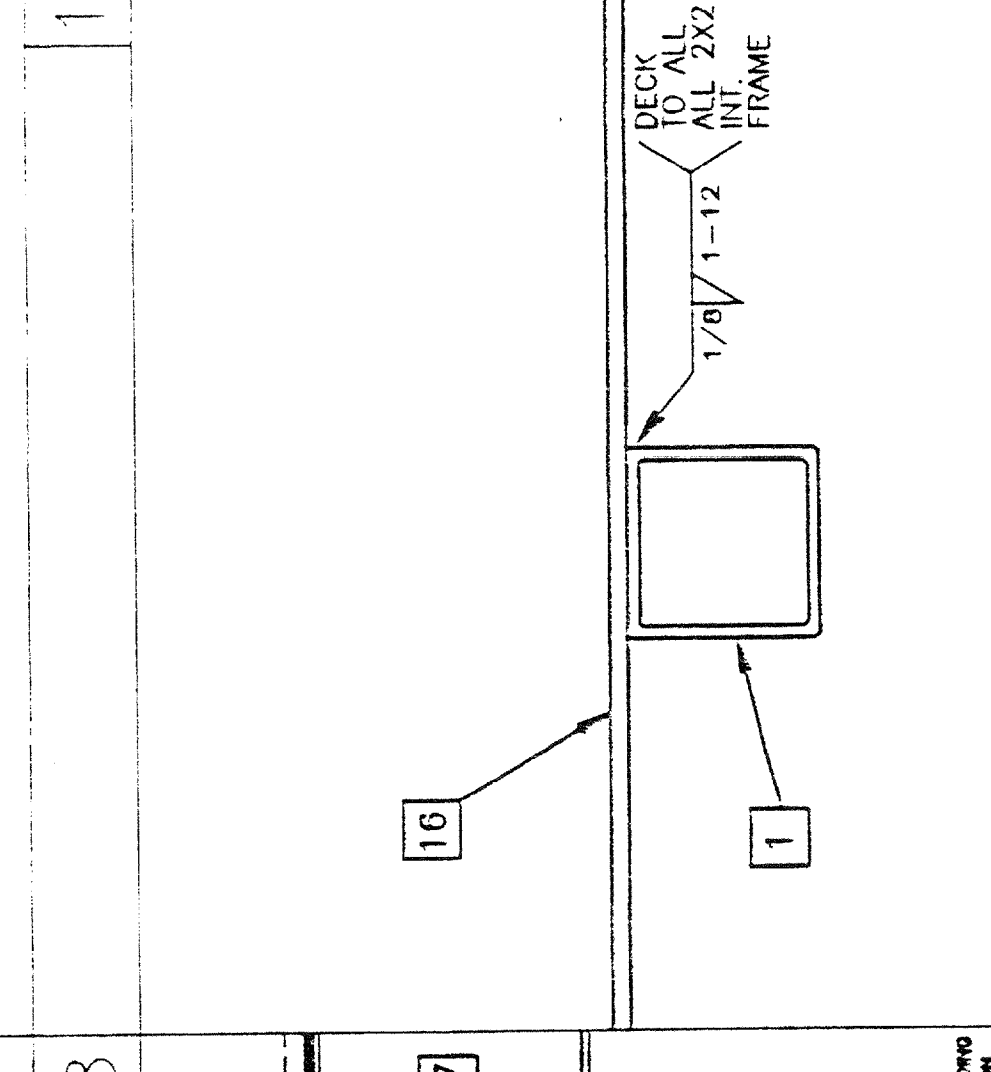
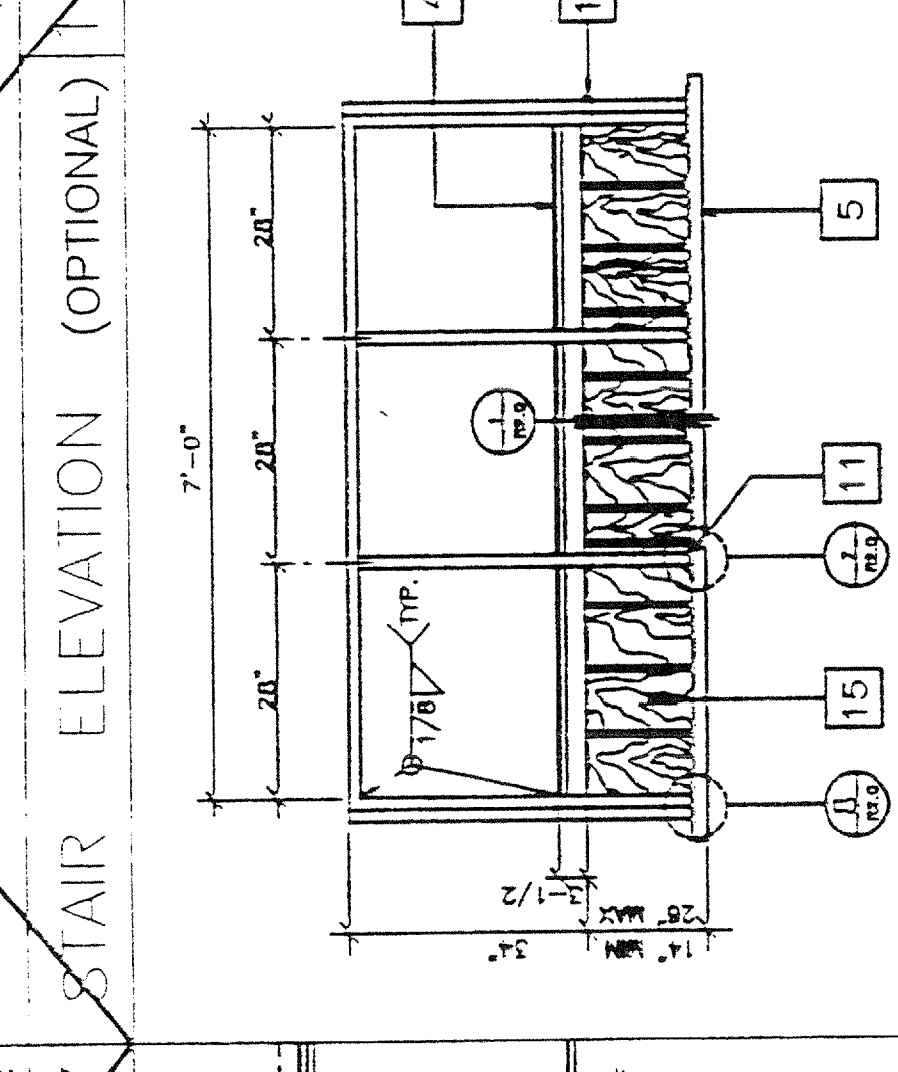
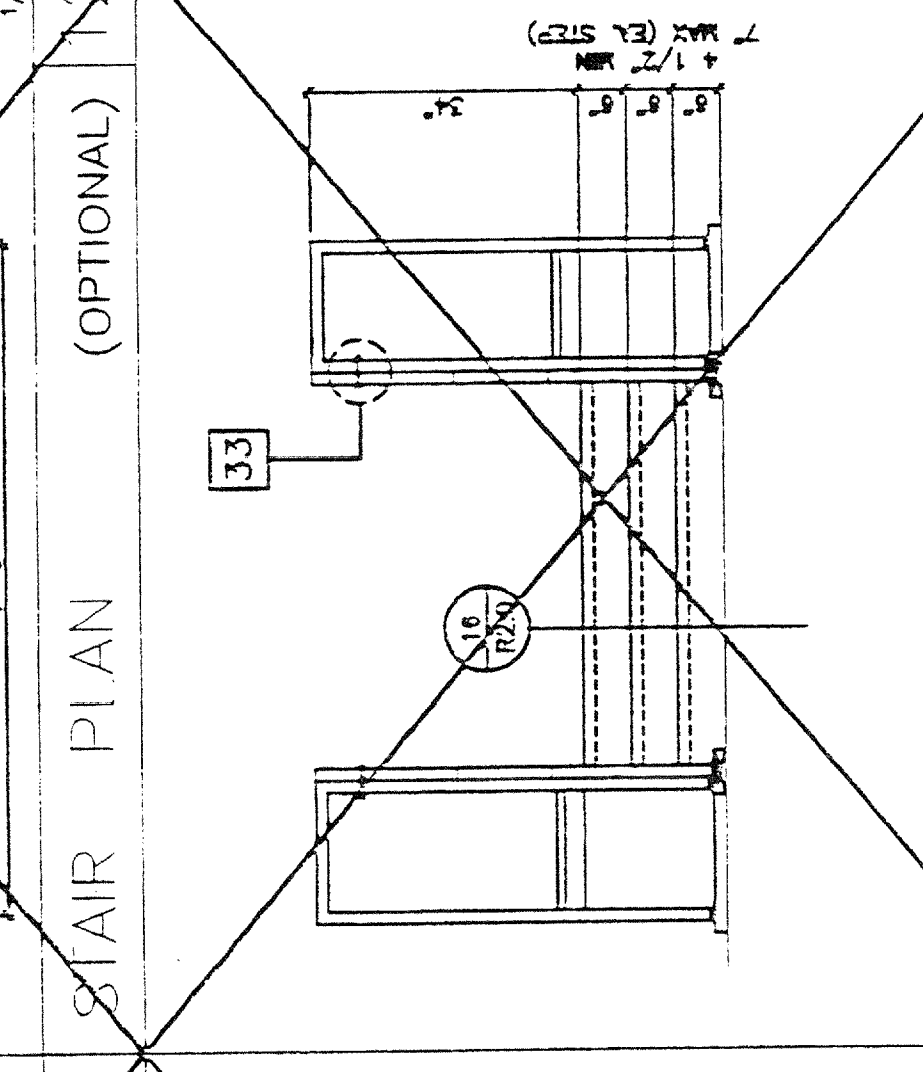
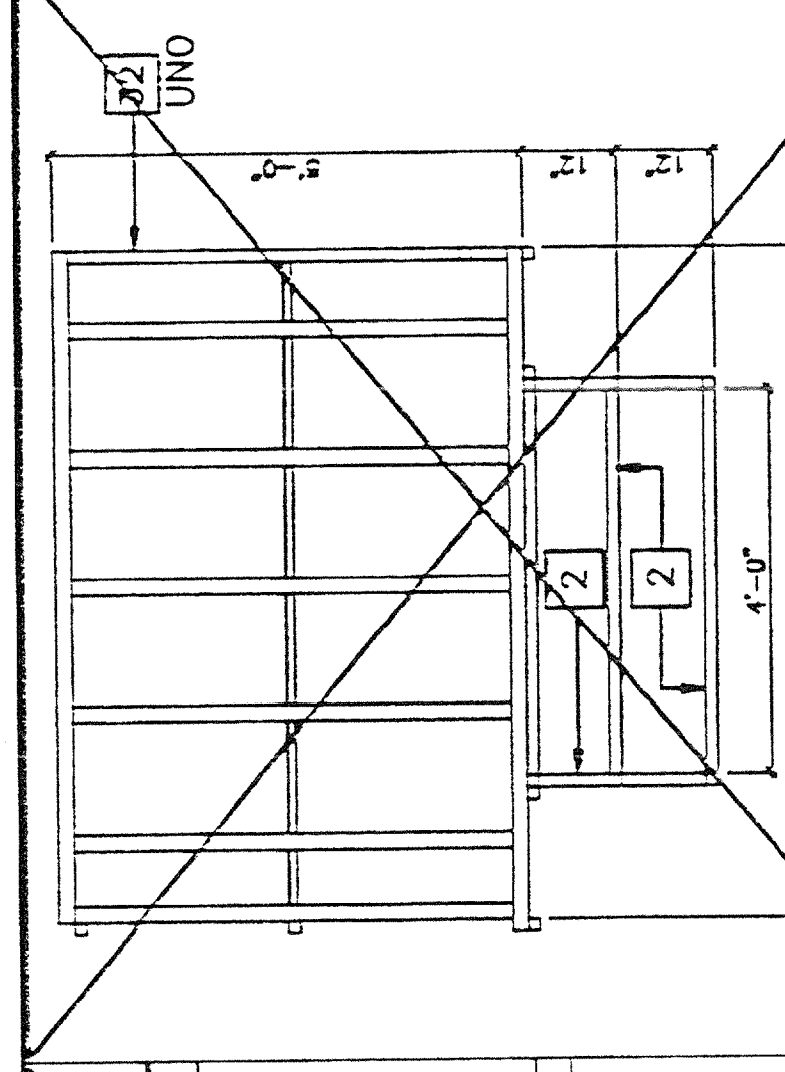
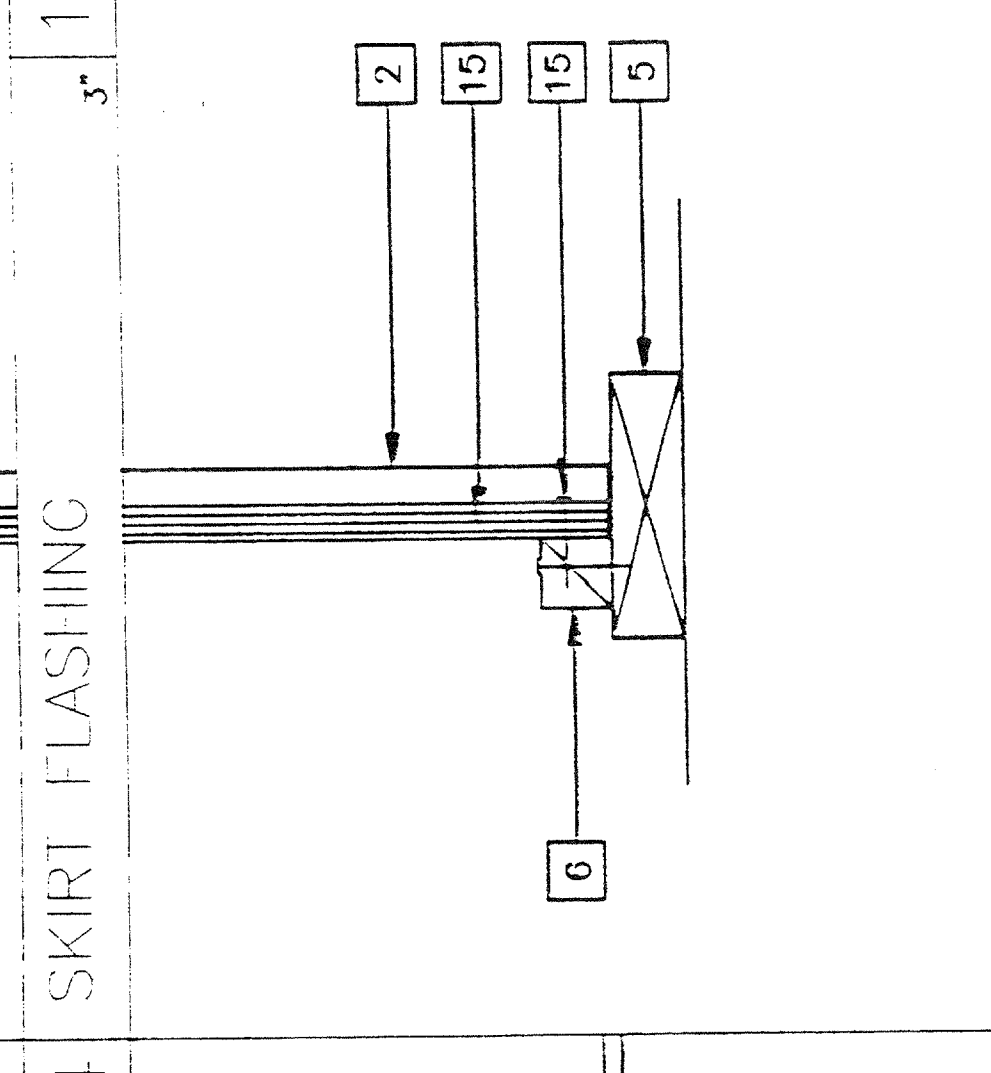
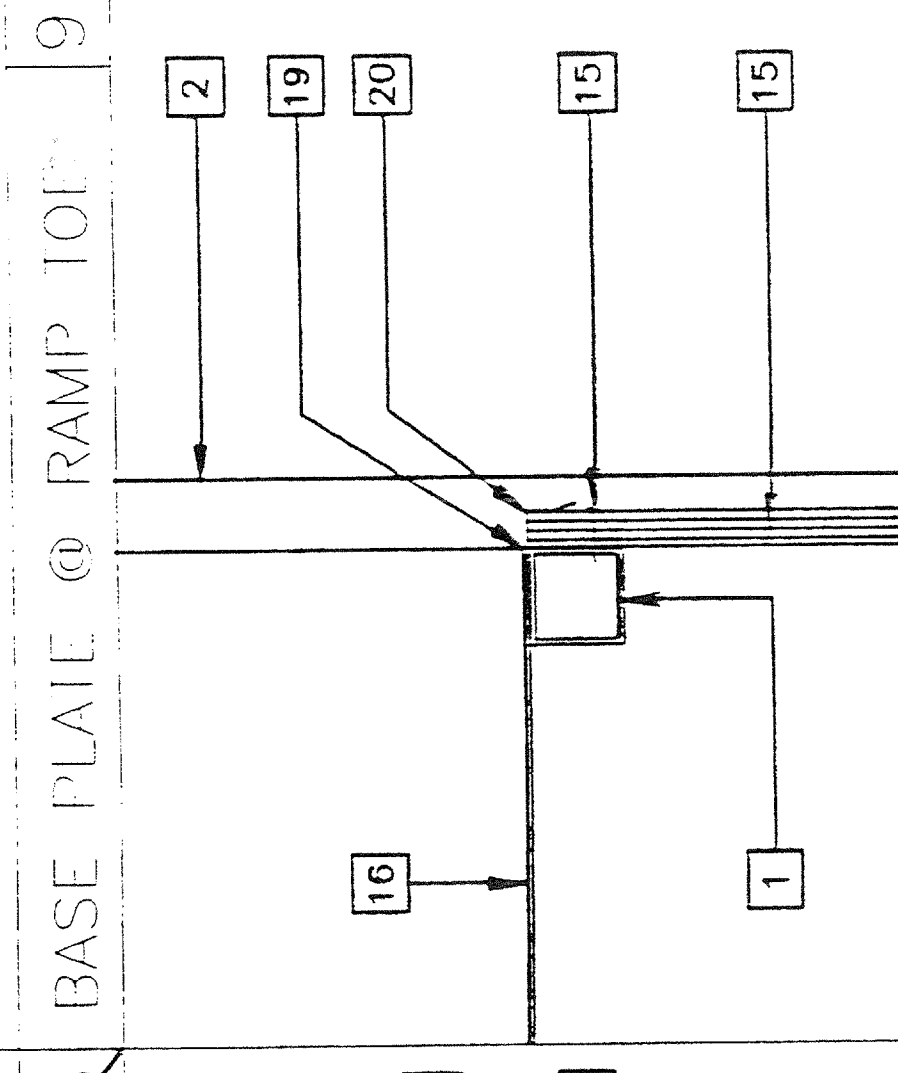
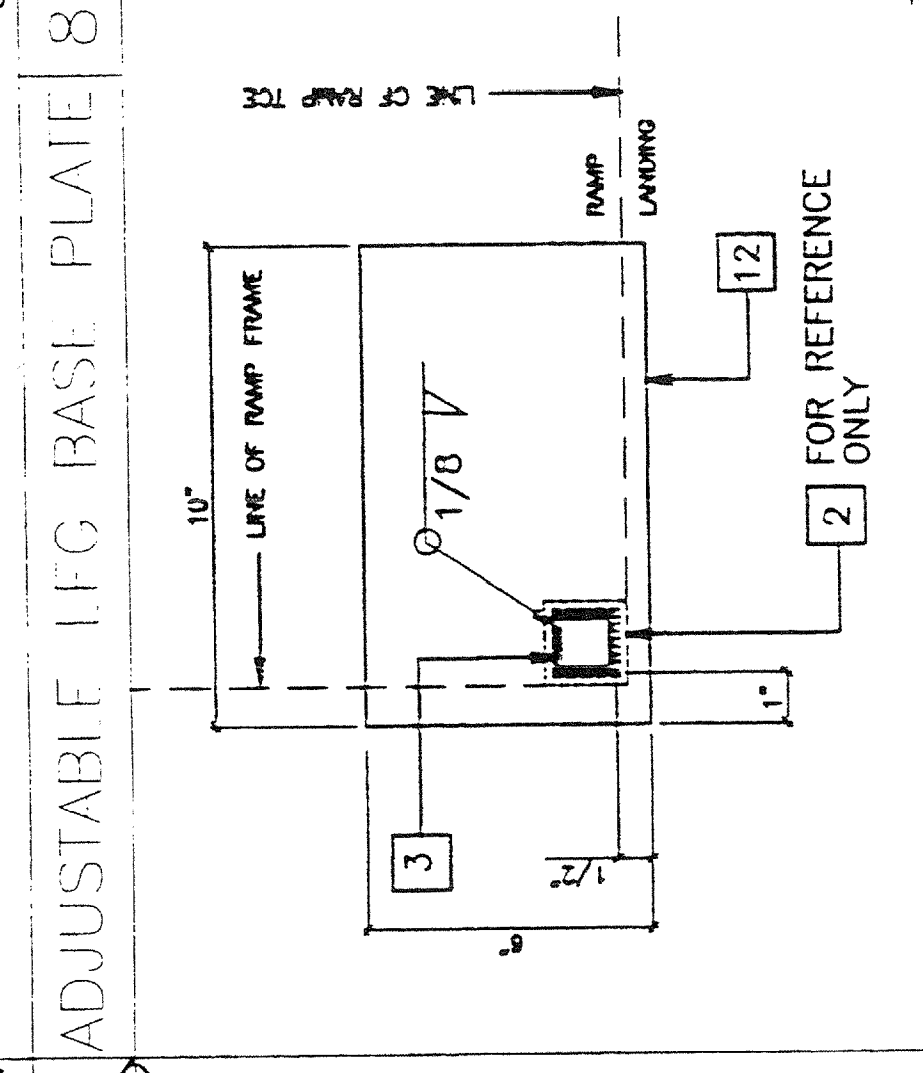
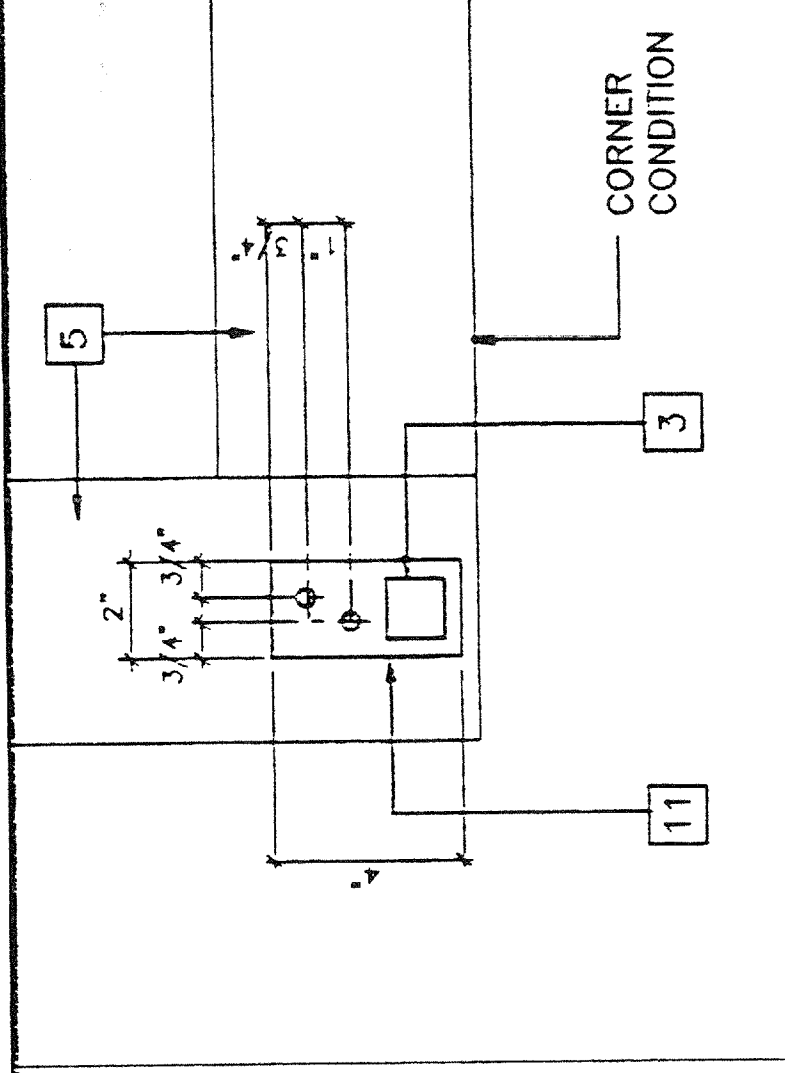
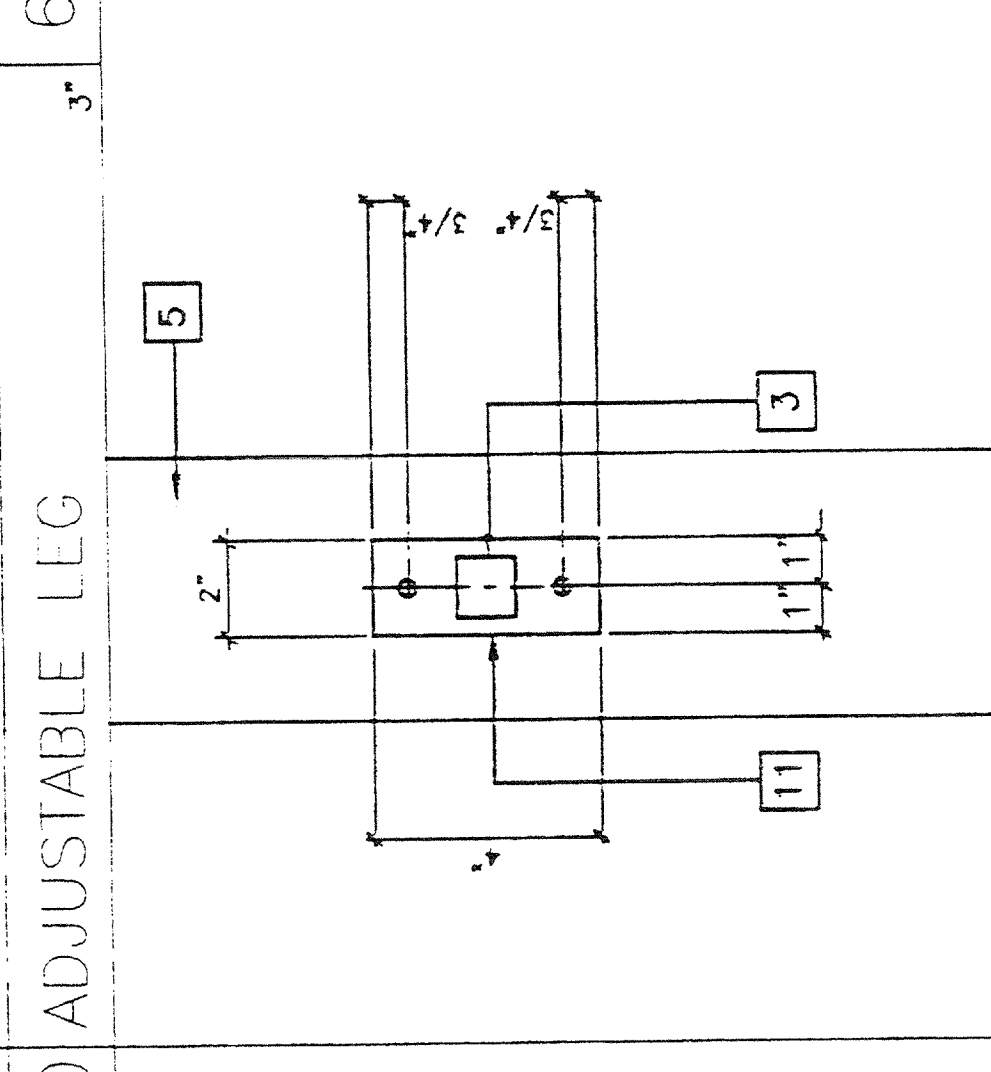
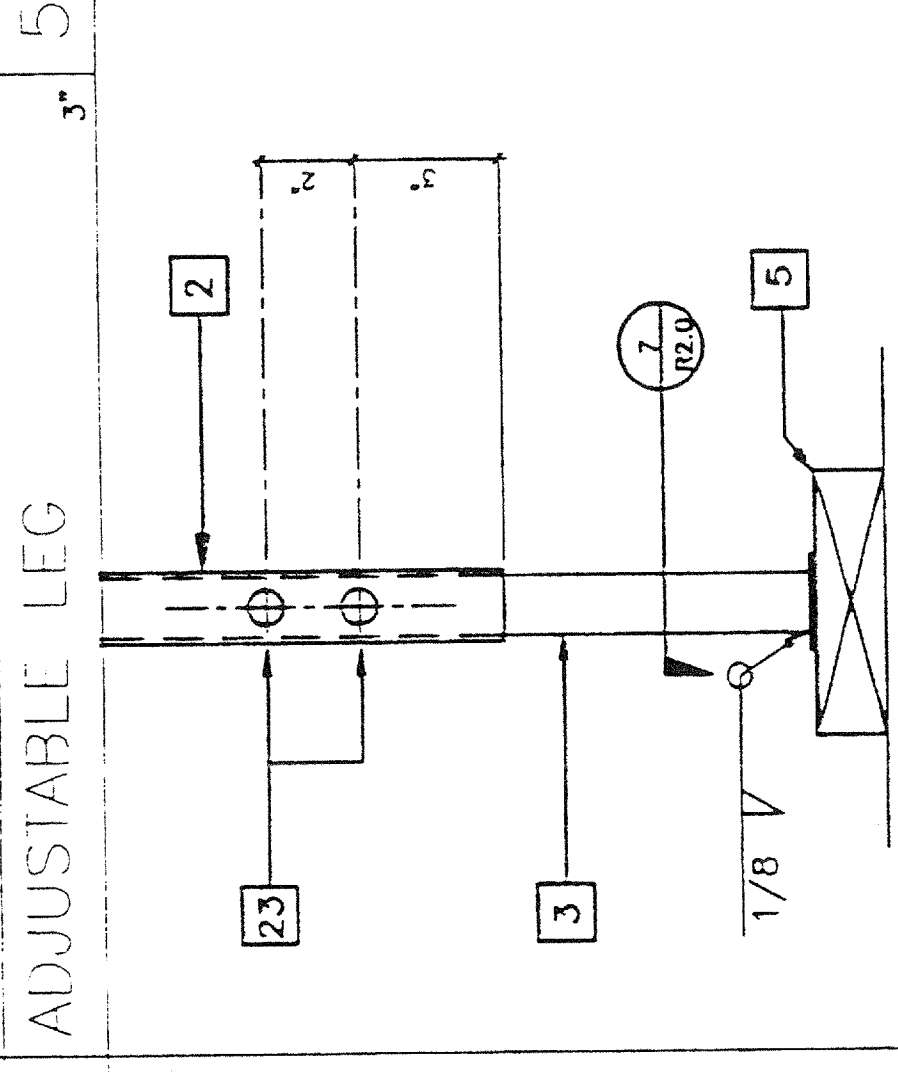
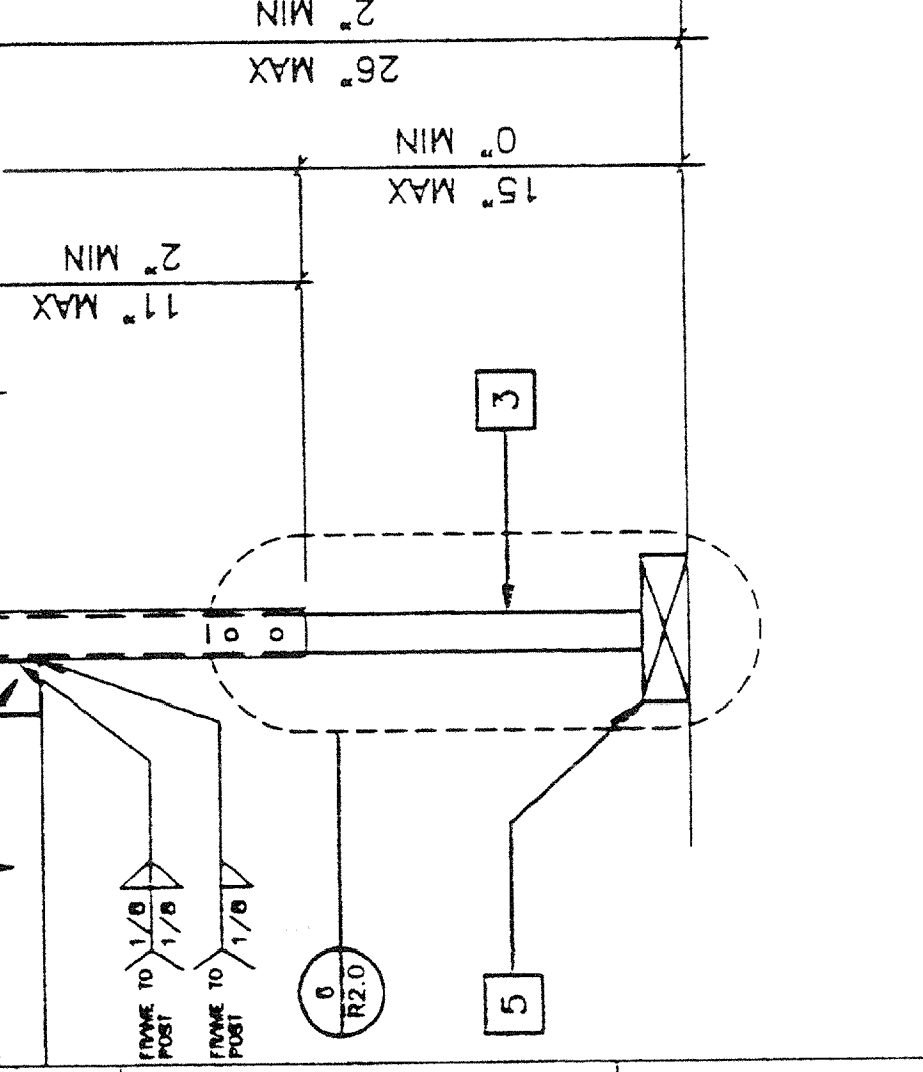
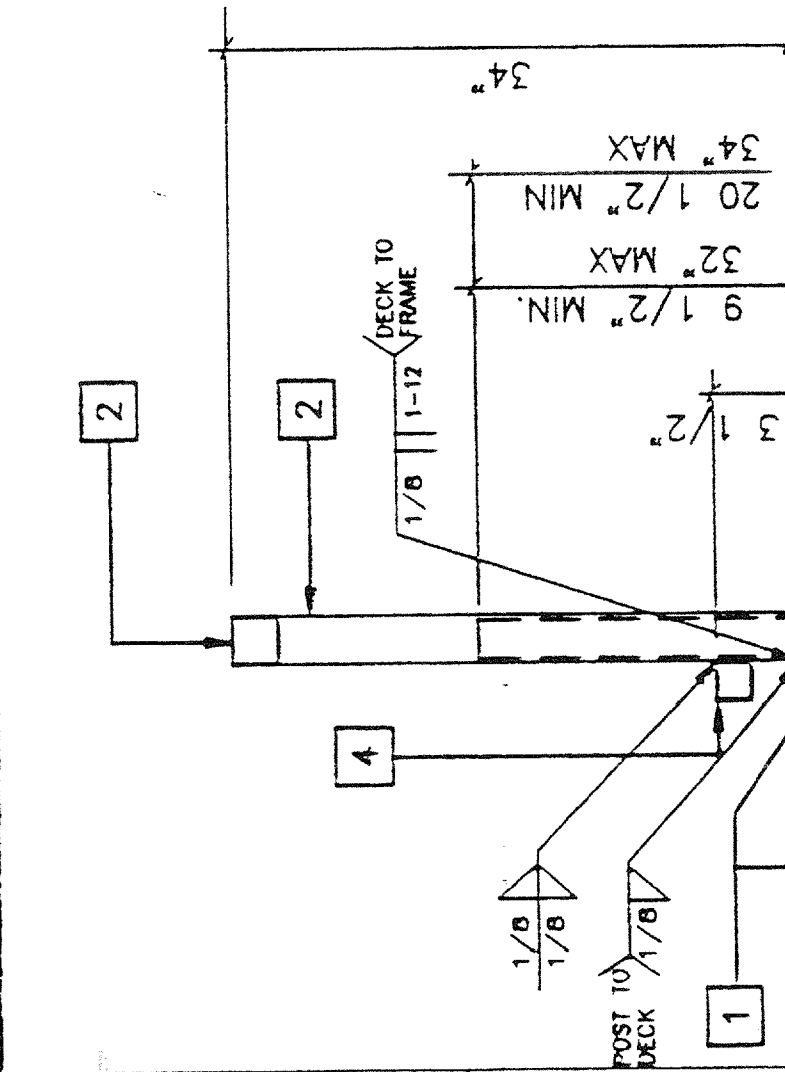
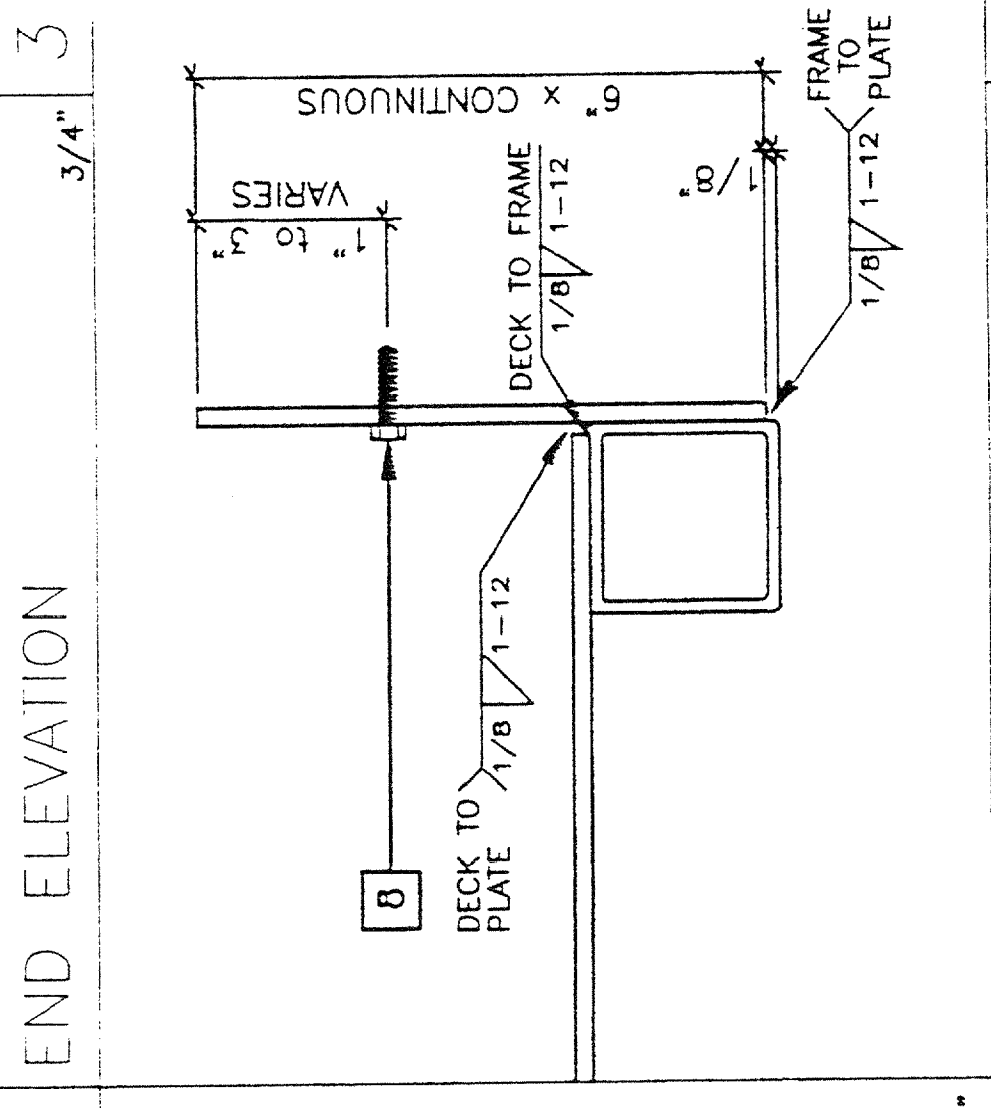
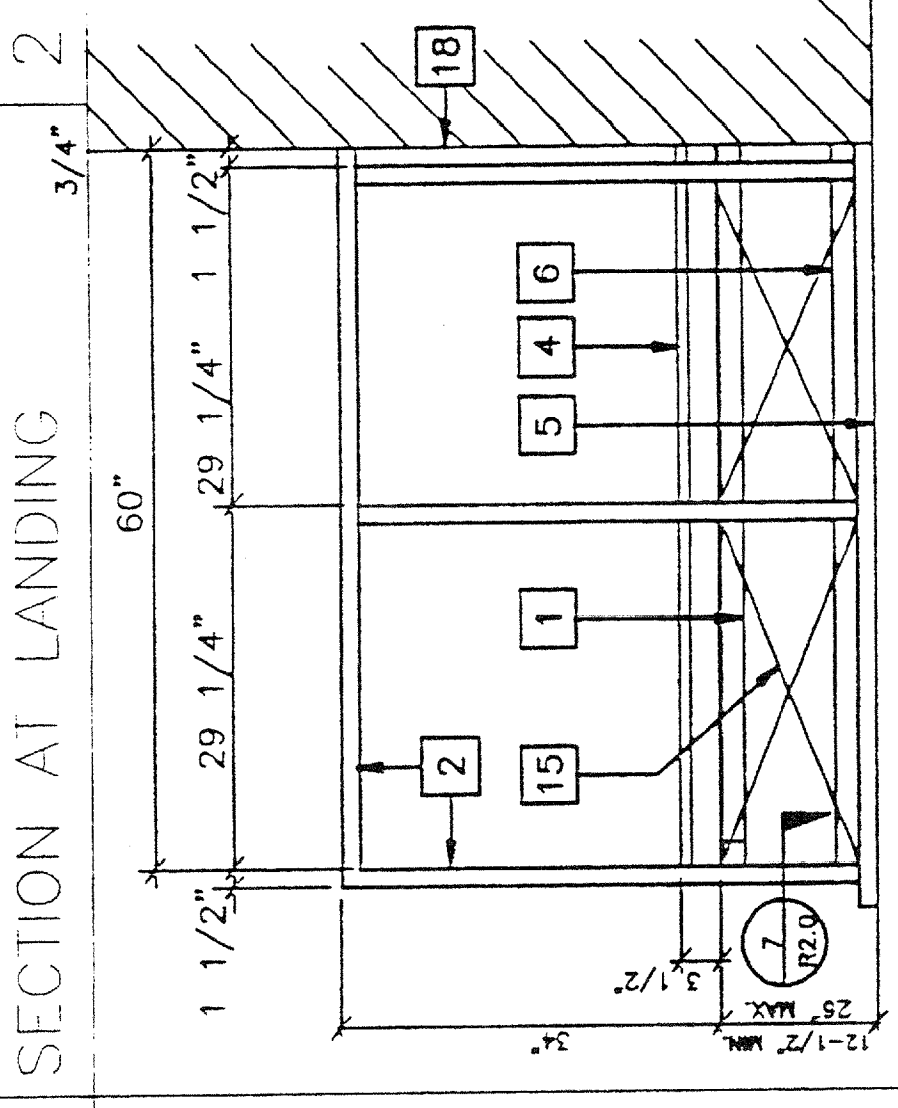
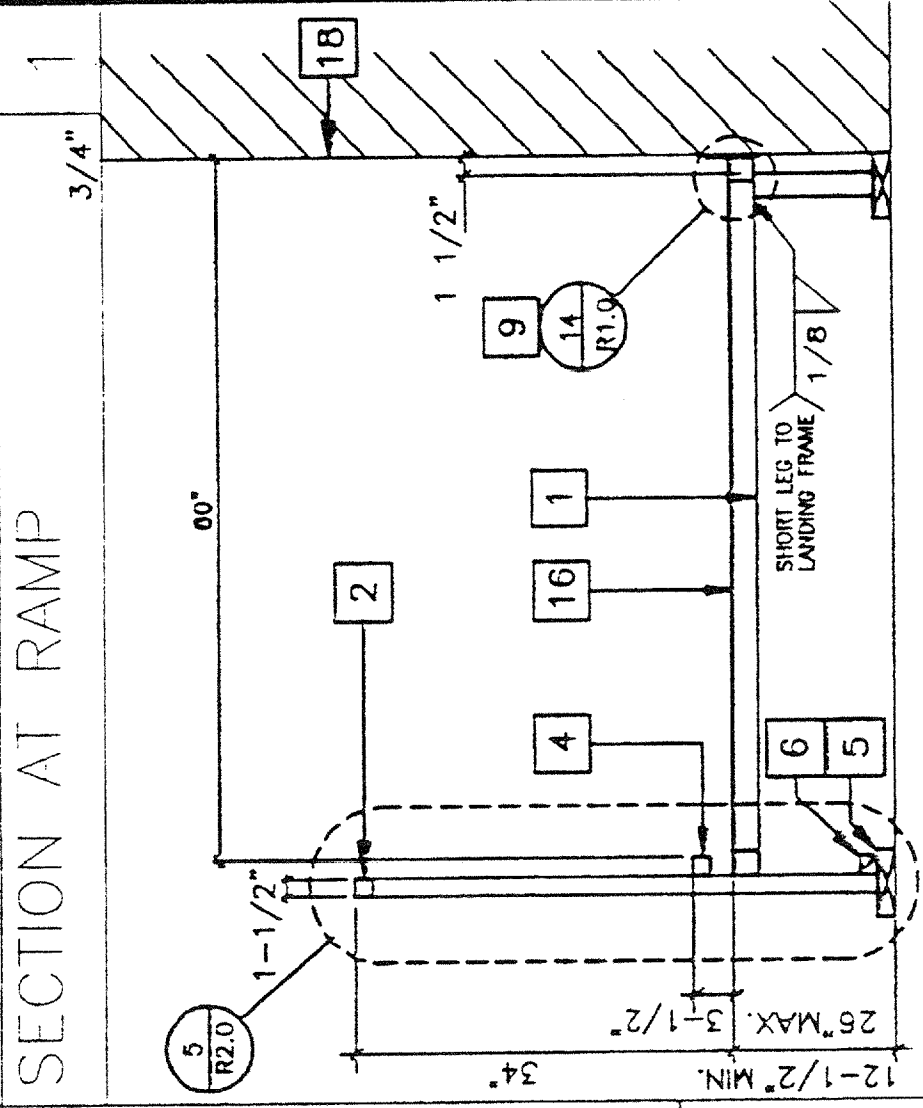
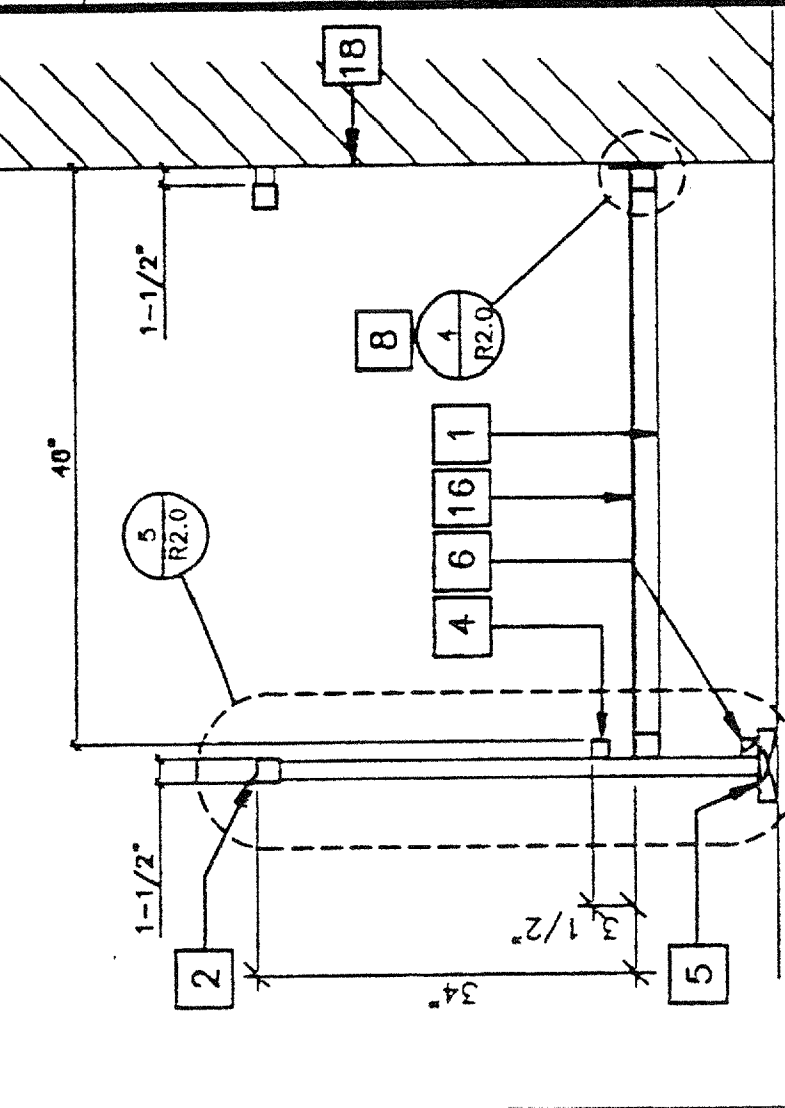
04 101527  
APPROVED FOR THE STATE ARCHITECTURE  
DATE SEP 11 1997

IDENTIFICATION NUMBER  
OFFICE OF REGULATION SERVICES  
04 101527  
AC 6 RLS 33 37  
DATE SEP 11 1997

Project No: PC 270  
drawn by: RVI  
date: 11/90  
checked by: SS  
date:   
Product no:   
MODTECH In-house No. **R2.0**

Job Number: PC 270  
© MODTECH, INC. 1997

**RAMP / STAIR DETAILS**



SECTION @ PLATE

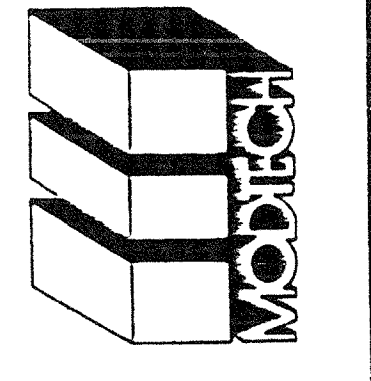
ADJUSTABLE LEG BASE PLATE

SKIRT @ SILL PLATE

SECTION @ INT. FRAME

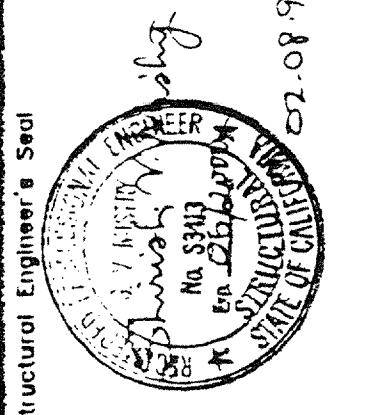
BY DISTRICT

MODTECH INC.  
2830 BARRETT AVENUE  
PERRIS, CALIF. 92572  
FX (909) 843-4014  
FX (909) 940-0427



IDENTIFICATION STAMP  
DIV. OF THE STATE ARCHITECTURE  
OFFICE OF REGULATION SERVICES

PC 270  
DATE FEB 11 1997  
REVISED



Structural Engineer's Seal

Mechanical Engineer's Seal

Electrical Engineer's Seal

REVISIONS

NO.	DESCRIPTION

NOTES: 1. DISTRICT OFFICE OF LOWER LANDING REQUIRE NO IMPROVEMENTS. INVESTIGATE OFF OF LOWER LANDING. 2. DISTRICT OFFICE OF LOWER LANDING REQUIRE NO IMPROVEMENTS. INVESTIGATE OFF OF LOWER LANDING. 3. DISTRICT OFFICE OF LOWER LANDING REQUIRE NO IMPROVEMENTS. INVESTIGATE OFF OF LOWER LANDING. 4. DISTRICT OFFICE OF LOWER LANDING REQUIRE NO IMPROVEMENTS. INVESTIGATE OFF OF LOWER LANDING. 5. DISTRICT OFFICE OF LOWER LANDING REQUIRE NO IMPROVEMENTS. INVESTIGATE OFF OF LOWER LANDING. 6. DISTRICT OFFICE OF LOWER LANDING REQUIRE NO IMPROVEMENTS. INVESTIGATE OFF OF LOWER LANDING. 7. DISTRICT OFFICE OF LOWER LANDING REQUIRE NO IMPROVEMENTS. INVESTIGATE OFF OF LOWER LANDING. 8. DISTRICT OFFICE OF LOWER LANDING REQUIRE NO IMPROVEMENTS. INVESTIGATE OFF OF LOWER LANDING. 9. DISTRICT OFFICE OF LOWER LANDING REQUIRE NO IMPROVEMENTS. INVESTIGATE OFF OF LOWER LANDING. 10. DISTRICT OFFICE OF LOWER LANDING REQUIRE NO IMPROVEMENTS. INVESTIGATE OFF OF LOWER LANDING. 11. DISTRICT OFFICE OF LOWER LANDING REQUIRE NO IMPROVEMENTS. INVESTIGATE OFF OF LOWER LANDING. 12. DISTRICT OFFICE OF LOWER LANDING REQUIRE NO IMPROVEMENTS. INVESTIGATE OFF OF LOWER LANDING. 13. DISTRICT OFFICE OF LOWER LANDING REQUIRE NO IMPROVEMENTS. INVESTIGATE OFF OF LOWER LANDING. 14. DISTRICT OFFICE OF LOWER LANDING REQUIRE NO IMPROVEMENTS. INVESTIGATE OFF OF LOWER LANDING. 15. DISTRICT OFFICE OF LOWER LANDING REQUIRE NO IMPROVEMENTS. INVESTIGATE OFF OF LOWER LANDING. 16. DISTRICT OFFICE OF LOWER LANDING REQUIRE NO IMPROVEMENTS. INVESTIGATE OFF OF LOWER LANDING. 17. DISTRICT OFFICE OF LOWER LANDING REQUIRE NO IMPROVEMENTS. INVESTIGATE OFF OF LOWER LANDING. 18. DISTRICT OFFICE OF LOWER LANDING REQUIRE NO IMPROVEMENTS. INVESTIGATE OFF OF LOWER LANDING. 19. DISTRICT OFFICE OF LOWER LANDING REQUIRE NO IMPROVEMENTS. INVESTIGATE OFF OF LOWER LANDING. 20. DISTRICT OFFICE OF LOWER LANDING REQUIRE NO IMPROVEMENTS. INVESTIGATE OFF OF LOWER LANDING. 21. DISTRICT OFFICE OF LOWER LANDING REQUIRE NO IMPROVEMENTS. INVESTIGATE OFF OF LOWER LANDING. 22. DISTRICT OFFICE OF LOWER LANDING REQUIRE NO IMPROVEMENTS. INVESTIGATE OFF OF LOWER LANDING. 23. DISTRICT OFFICE OF LOWER LANDING REQUIRE NO IMPROVEMENTS. INVESTIGATE OFF OF LOWER LANDING. 24. DISTRICT OFFICE OF LOWER LANDING REQUIRE NO IMPROVEMENTS. INVESTIGATE OFF OF LOWER LANDING. 25. DISTRICT OFFICE OF LOWER LANDING REQUIRE NO IMPROVEMENTS. INVESTIGATE OFF OF LOWER LANDING. 26. DISTRICT OFFICE OF LOWER LANDING REQUIRE NO IMPROVEMENTS. INVESTIGATE OFF OF LOWER LANDING. 27. DISTRICT OFFICE OF LOWER LANDING REQUIRE NO IMPROVEMENTS. INVESTIGATE OFF OF LOWER LANDING. 28. DISTRICT OFFICE OF LOWER LANDING REQUIRE NO IMPROVEMENTS. INVESTIGATE OFF OF LOWER LANDING. 29. DISTRICT OFFICE OF LOWER LANDING REQUIRE NO IMPROVEMENTS. INVESTIGATE OFF OF LOWER LANDING. 30. DISTRICT OFFICE OF LOWER LANDING REQUIRE NO IMPROVEMENTS. INVESTIGATE OFF OF LOWER LANDING. 31. DISTRICT OFFICE OF LOWER LANDING REQUIRE NO IMPROVEMENTS. INVESTIGATE OFF OF LOWER LANDING. 32. DISTRICT OFFICE OF LOWER LANDING REQUIRE NO IMPROVEMENTS. INVESTIGATE OFF OF LOWER LANDING. 33. DISTRICT OFFICE OF LOWER LANDING REQUIRE NO IMPROVEMENTS. INVESTIGATE OFF OF LOWER LANDING. 34. DISTRICT OFFICE OF LOWER LANDING REQUIRE NO IMPROVEMENTS. INVESTIGATE OFF OF LOWER LANDING. 35. DISTRICT OFFICE OF LOWER LANDING REQUIRE NO IMPROVEMENTS. INVESTIGATE OFF OF LOWER LANDING. 36. DISTRICT OFFICE OF LOWER LANDING REQUIRE NO IMPROVEMENTS. INVESTIGATE OFF OF LOWER LANDING.