

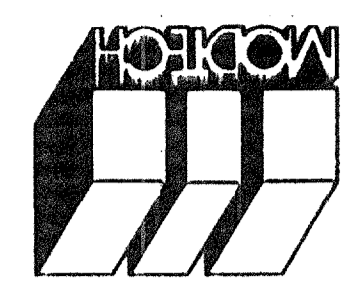
Electrical Engineer's Seal

Mechanical Engineer's Seal

Structural Engineer's Seal

Architect's Seal

Division of the State Architect  
 IDENTIFICATION STAMP  
 OFFICE OF REGULATION SERVICES  
 PC-270  
 REVISED  
 DATE: FEB 19 1999  
 FLS: SS  
 AC: *em*



**MODTECH INC.**  
 2830 BARRETT AVENUE  
 PERRIS, CALIF. 92572  
 PH (909) 943-4014  
 FAX (909) 940-0427

PROJECT NUMBER: © MODTECH, INC. 1999

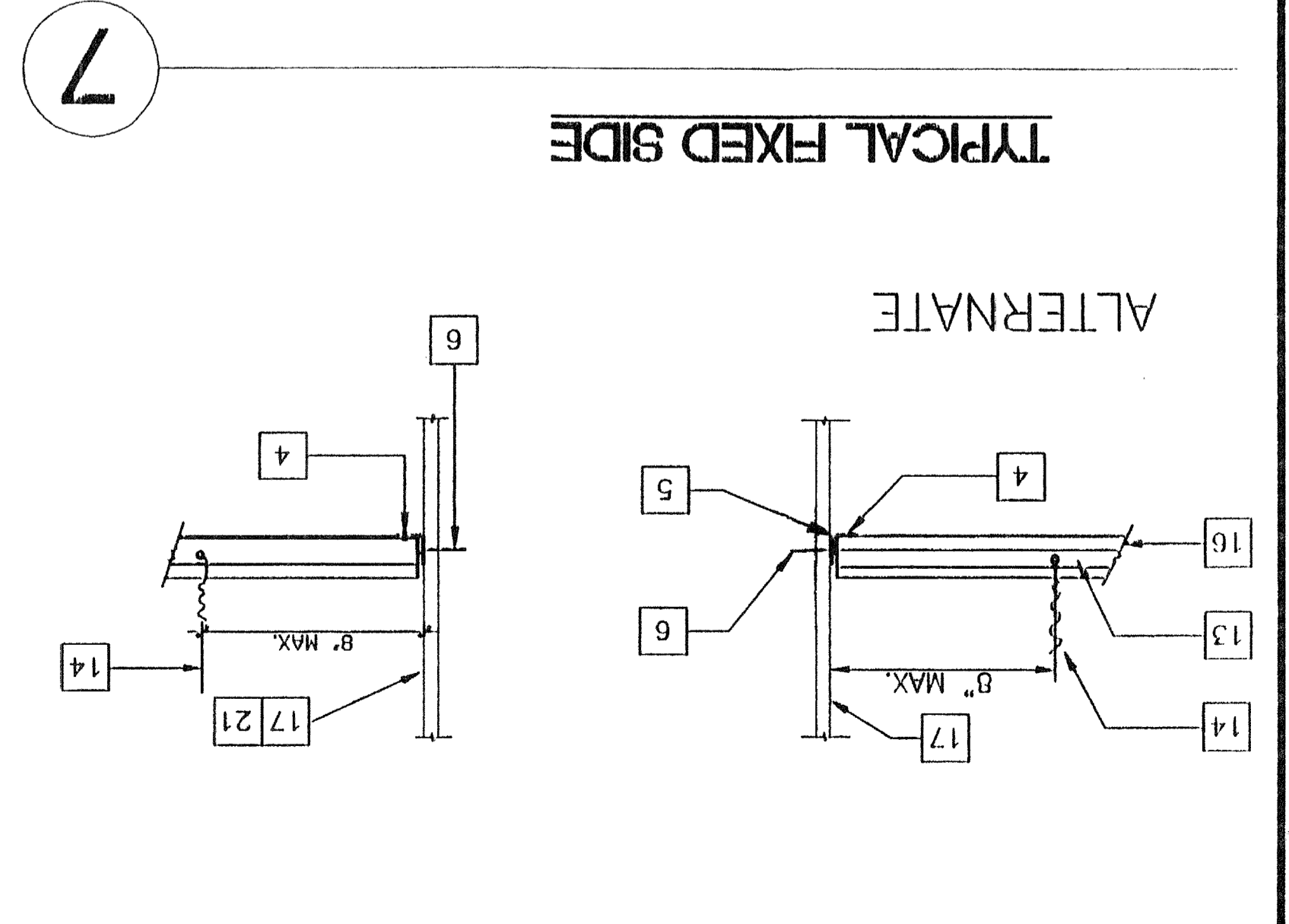
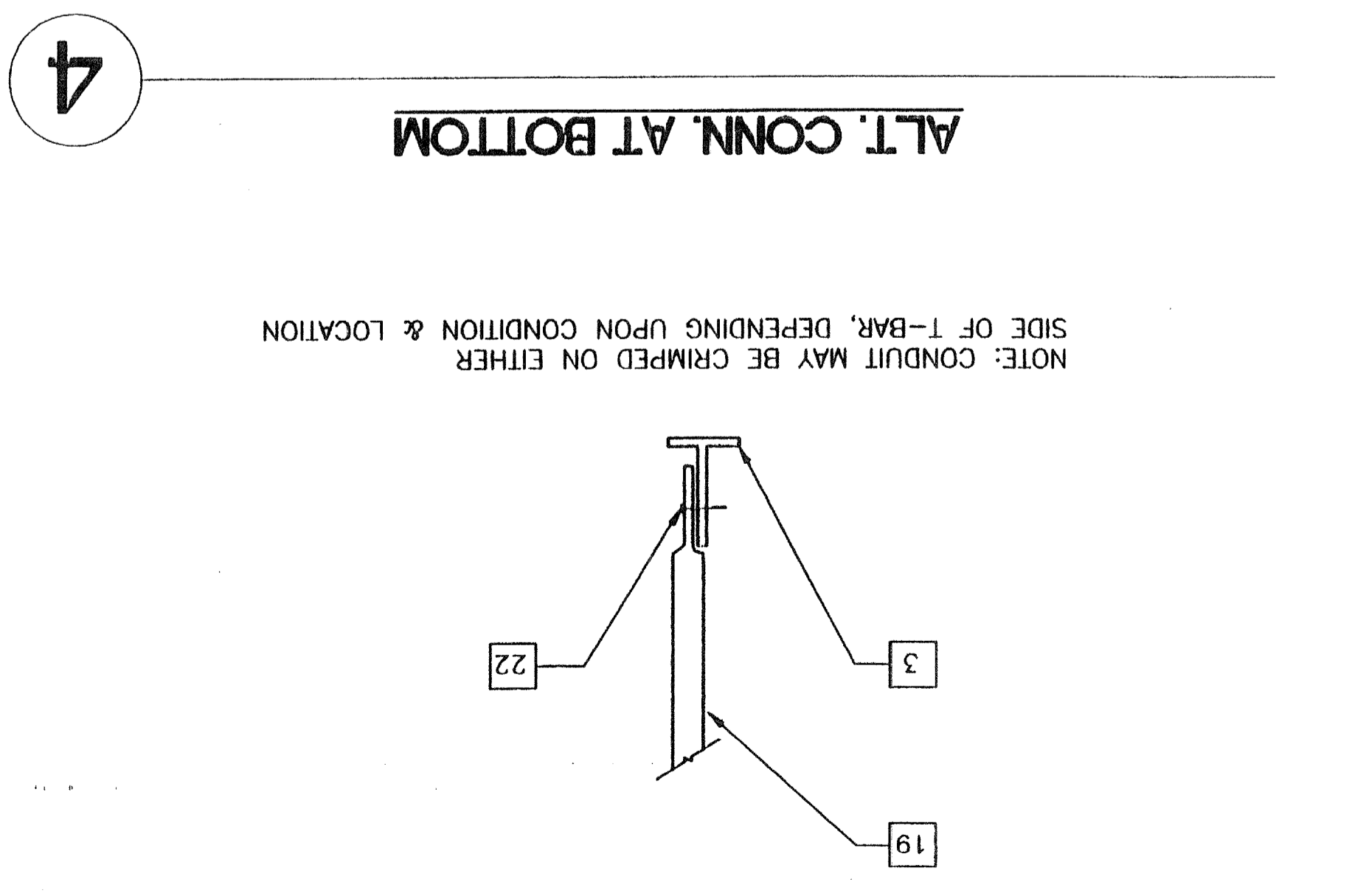
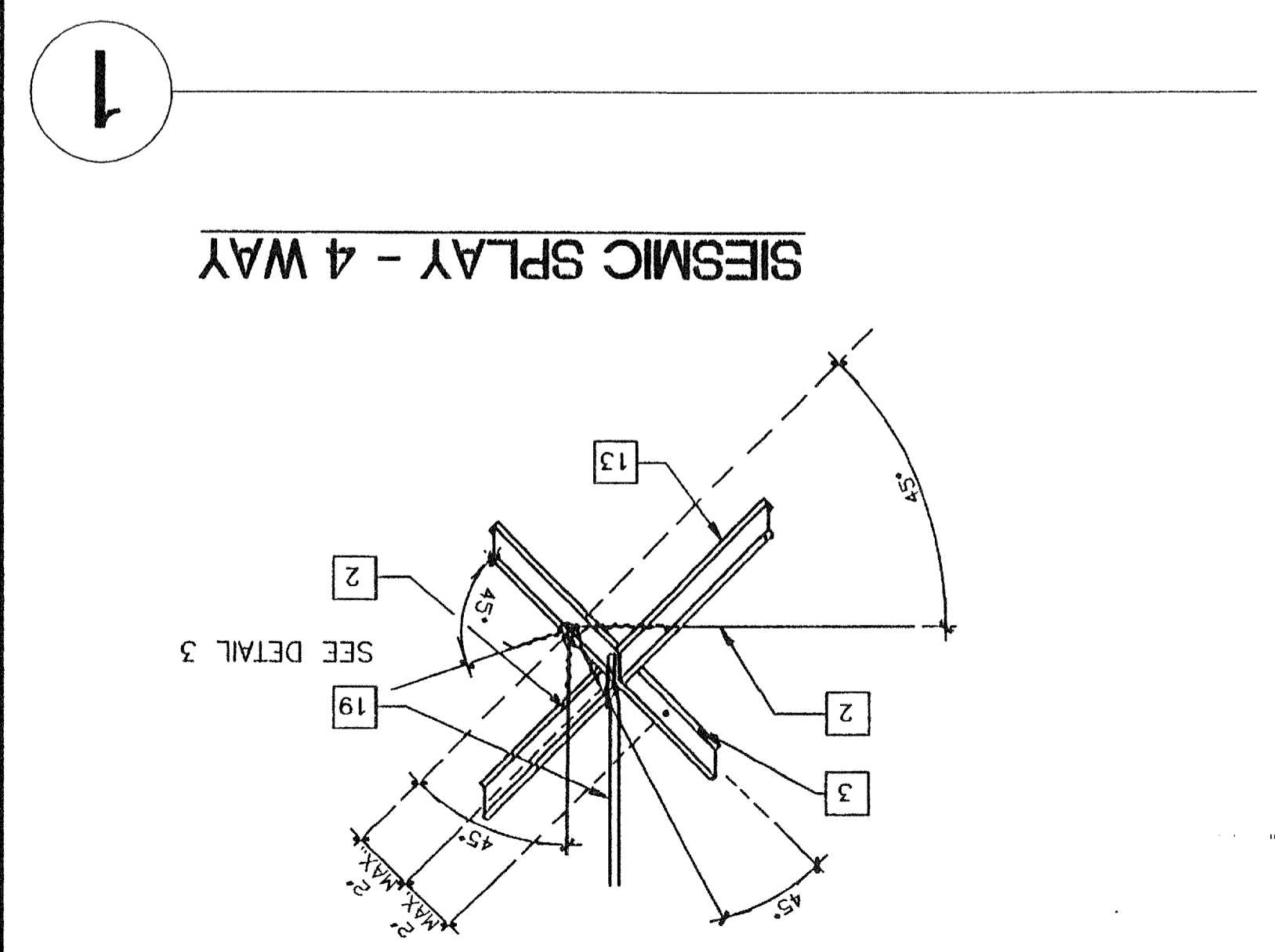
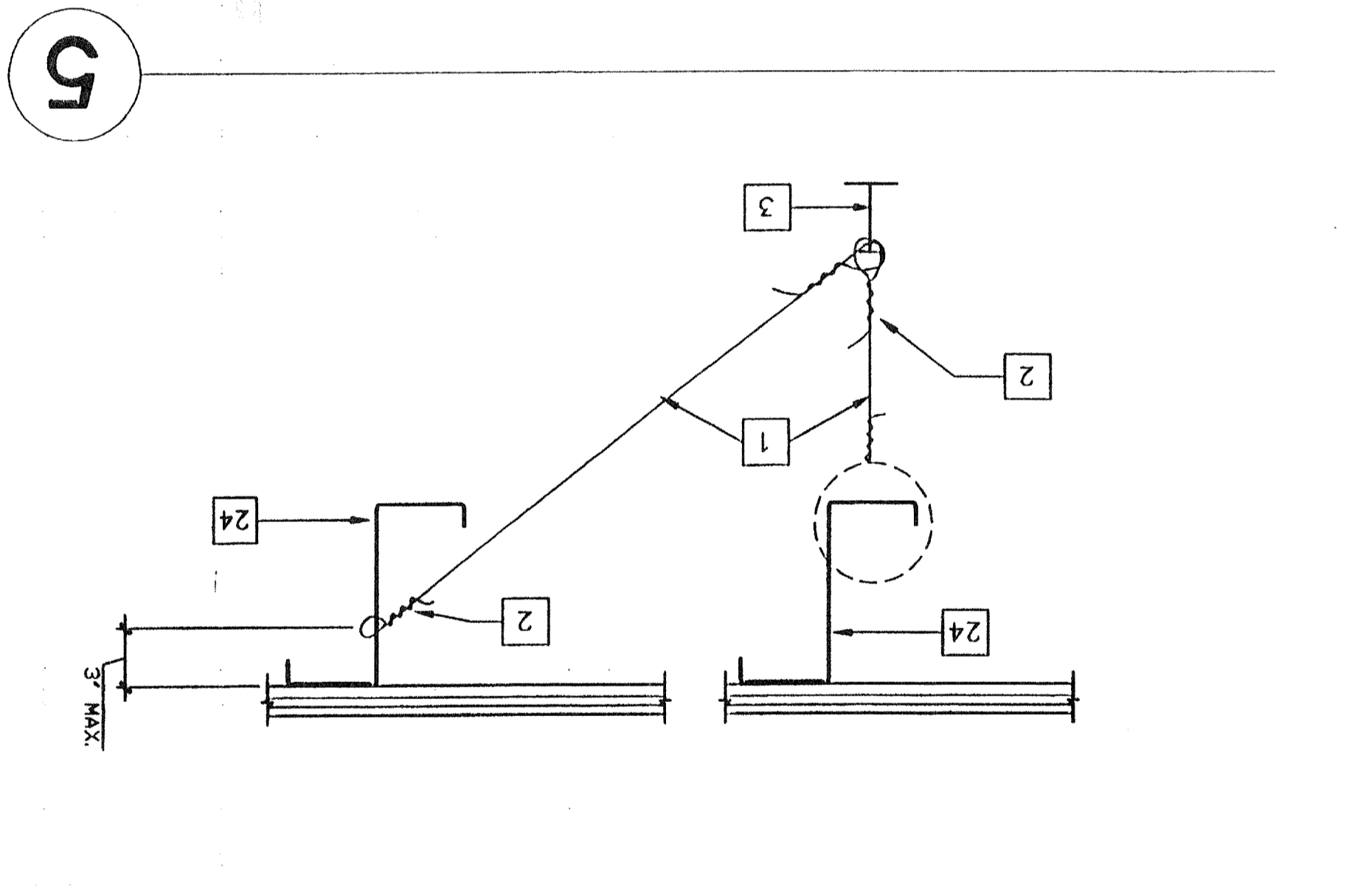
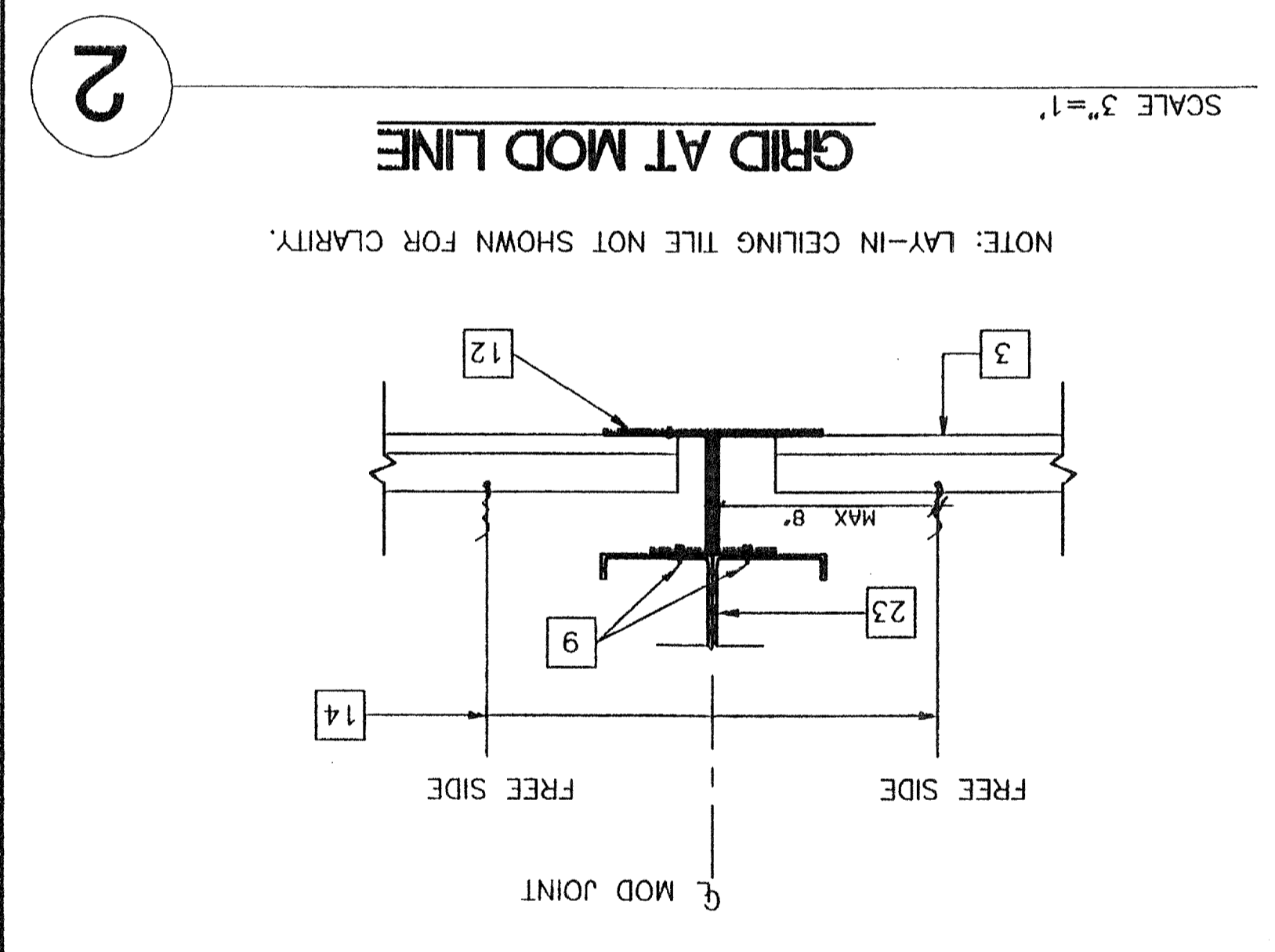
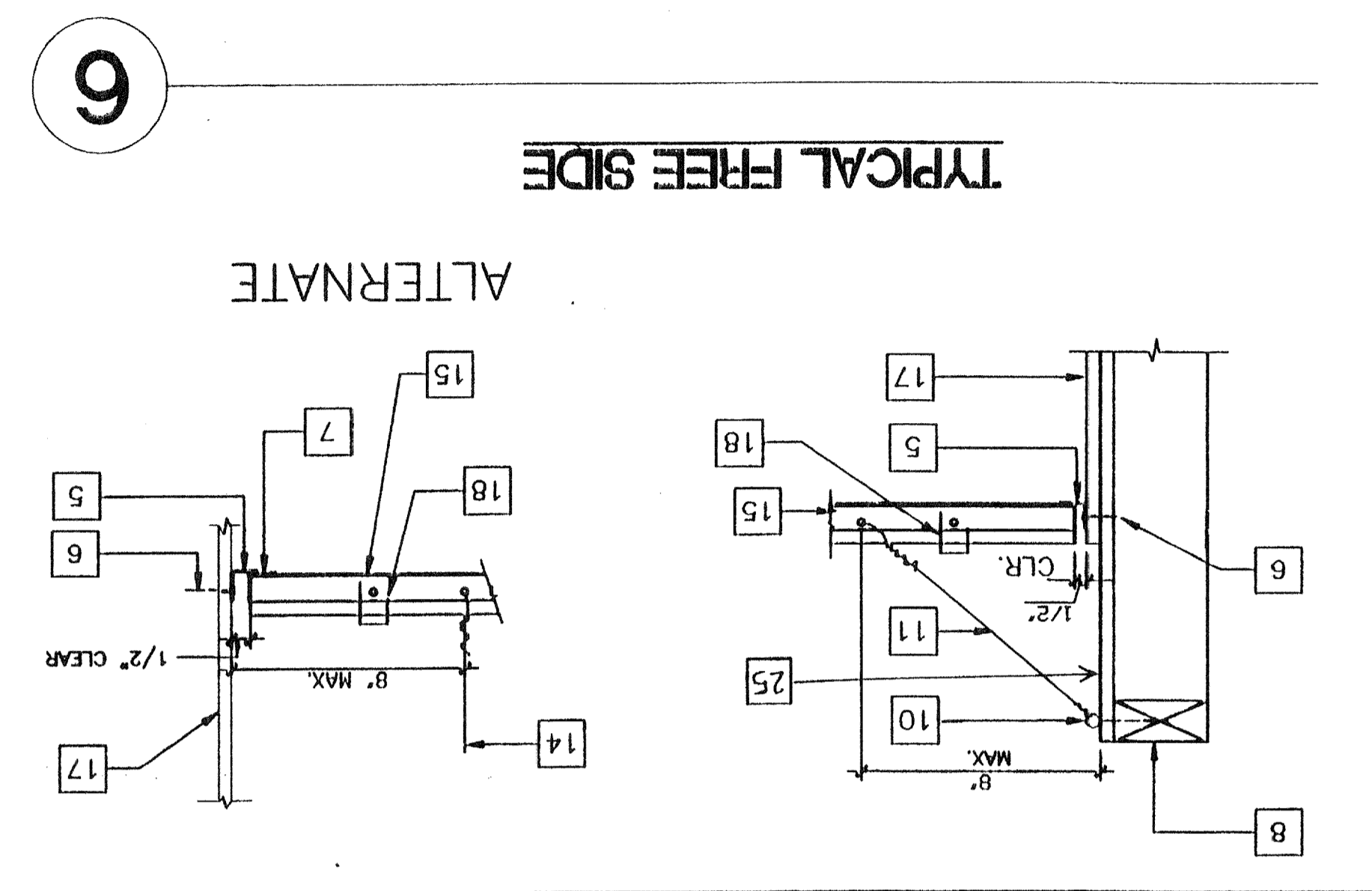
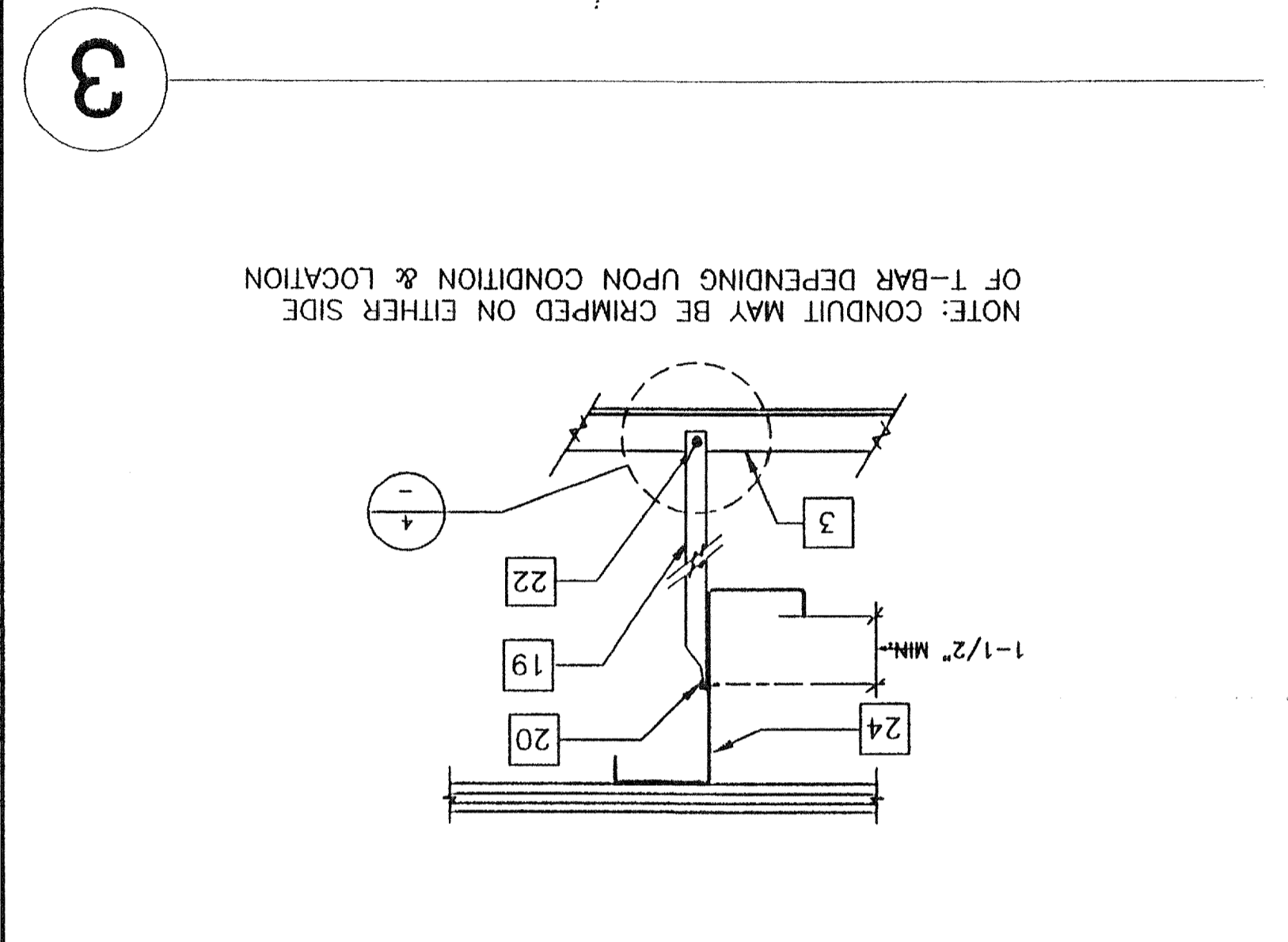
**REFLECTED CEILING DETAILS**

**A7.1**

PROJECT INDEX NO.  
 PROJECT NO.  
 DATE:  
 CHECKED BY:  
 DRAWN BY: RWF  
 DATE: 2-2-99

PROJECT NO. PC-270

FILE PATH: PC270A71.DWG



- KEY NOTES**
- 1 12GA. HANGER OR DIAGONAL SPLAY WIRE IN PUNCHED OR DRILLED HOLE
  - 2 12GA. WIRE WITH 4 WRAPS IN 1 1/2" (TYP.) WIRE TO RUN PERPENDICULAR TO MAIN TEE
  - 3 MAIN RUNNER
  - 4 1/8" Ø POP RIVET TO EACH T-BAR
  - 5 WALL ANGLE
  - 6 6d 16" Ø FRAMING TO WALL STUD
  - 7 #8 S.T.S.M.S. WHEN METAL STUDS ARE USED
  - 8 CONNECTION TO WALL ANGLE
  - 9 TOP PLATE
  - 10 #10 S.T.S.M.S. @ 4" O.C.
  - 11 3" X 1/4" EYED SCREW, 1/8" Ø X 2" JIF-E SCREW WHEN METAL STUDS ARE USED
  - 12 HANGER TO WALL WHERE NO RAFTER ABOVE
  - 13 MAX SLOPE 1" IN 6"
  - 14 28 GA. JETCOAT
  - 15 CROSS TEE
  - 16 12GA. HANGER WIRE AT THE END ON EACH RUNNER MIN. 4 WRAPS IN MAX 1 1/2" - SEE DETAIL #5 FOR WIRE TO PURLIN ATTACHMENT
  - 17 MAIN RUNNERS OR CROSS TEES
  - 18 ACOUSTICAL BOARD
  - 19 FINISH WALL
  - 20 HORIZONTAL STRUTS SHALL RUN CONTINUOUS AT ALL PERIMETERS, NOT POP RIVETED TO THE WALL ANGLE ARMSTRONG #7425 OR #7445 WITH SPRING STEEL SNAP TO RUNNER PER IR 47-4
  - 21 3/4" EMT CONDUIT - MAX 5'-2" (COMPRESSION STRUT)
  - 22 CRIMP CONDUIT AND ATTACH TO RAFTER WITH (2) #8 TEK SCREW
  - 23 PROVIDE SPACE AT ALL MEMBERS AT OPPOSITE WALL
  - 24 CRIMP CONDUIT AND ATTACH TO T-BAR GRID WITH #8 TEK SCREW
  - 25 ROOF BEAM SEE (SM)
  - 26 ROOF PURLIN SEE (SM)
  - 27 CARPET GFR BRD. TO TOP PLATE FOR FIRE BLOCKING.

~~REVISED~~  
 DATE: 10/10/99  
 AC: *em*  
 FLS: SS  
 DATE: 10/15/99  
 AC: *em*  
 FLS: SS