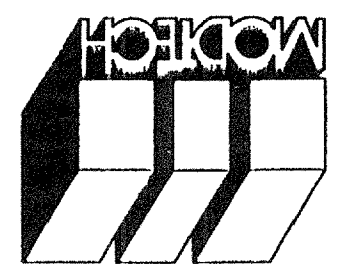


5
4
3
2
1

REVISIONS

Electrical Engineer's Seal
 Mechanical Engineer's Seal
 Structural Engineer's Seal
 Architect's Seal

Division of the State Architect
 IDENTIFICATION STAMP
 OFFICE OF REGULATION SERVICES
 Date: _____
 AC: _____
 FLS: _____
 SS: _____
 Appl. _____



MODTECH INC.
 2830 BARRETT AVENUE
 PERRIS, CALIF. 92572
 PH (909) 943-4014
 FAX (909) 940-0427

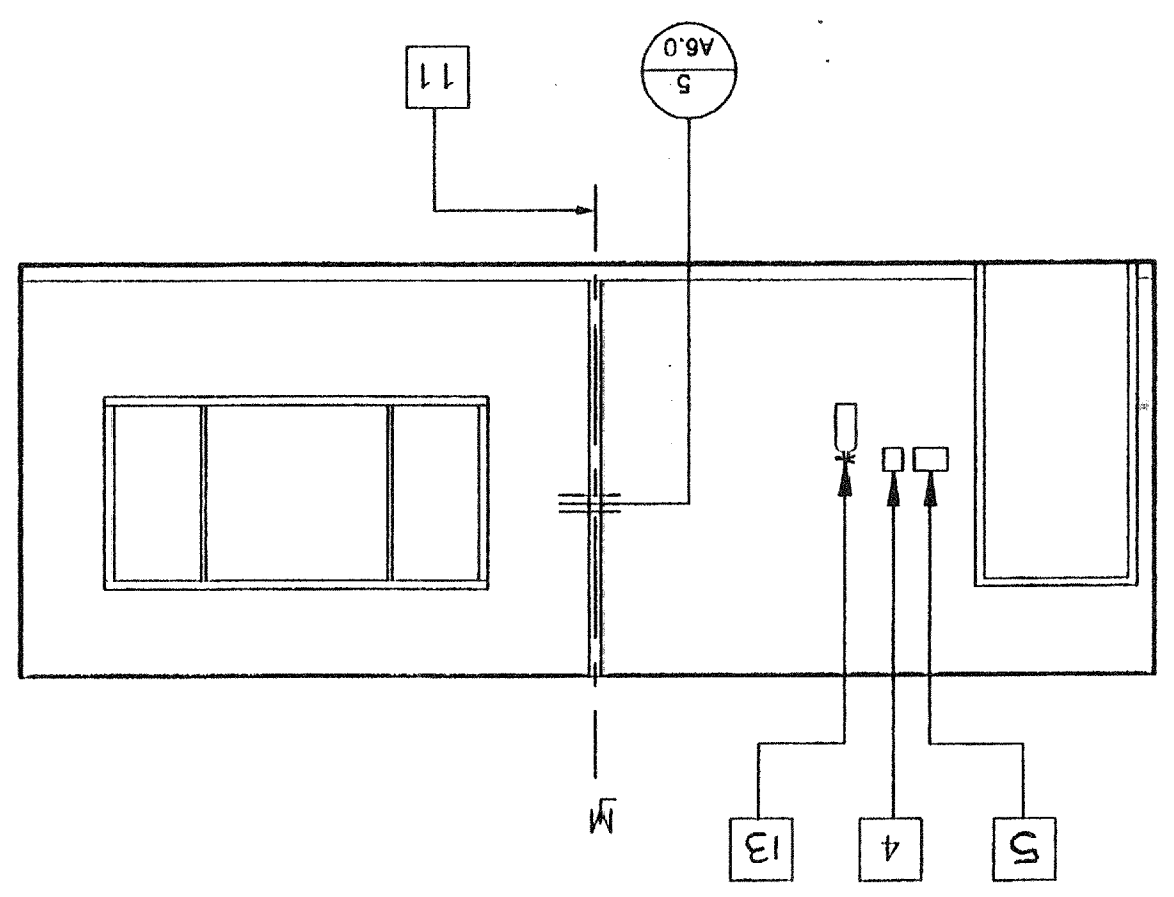
PROJECT NUMBER: _____
 MODTECH, INC. 1998

SCALE 1/4"=1'-0"

INTERIOR ELEVATIONS (24' X 40')

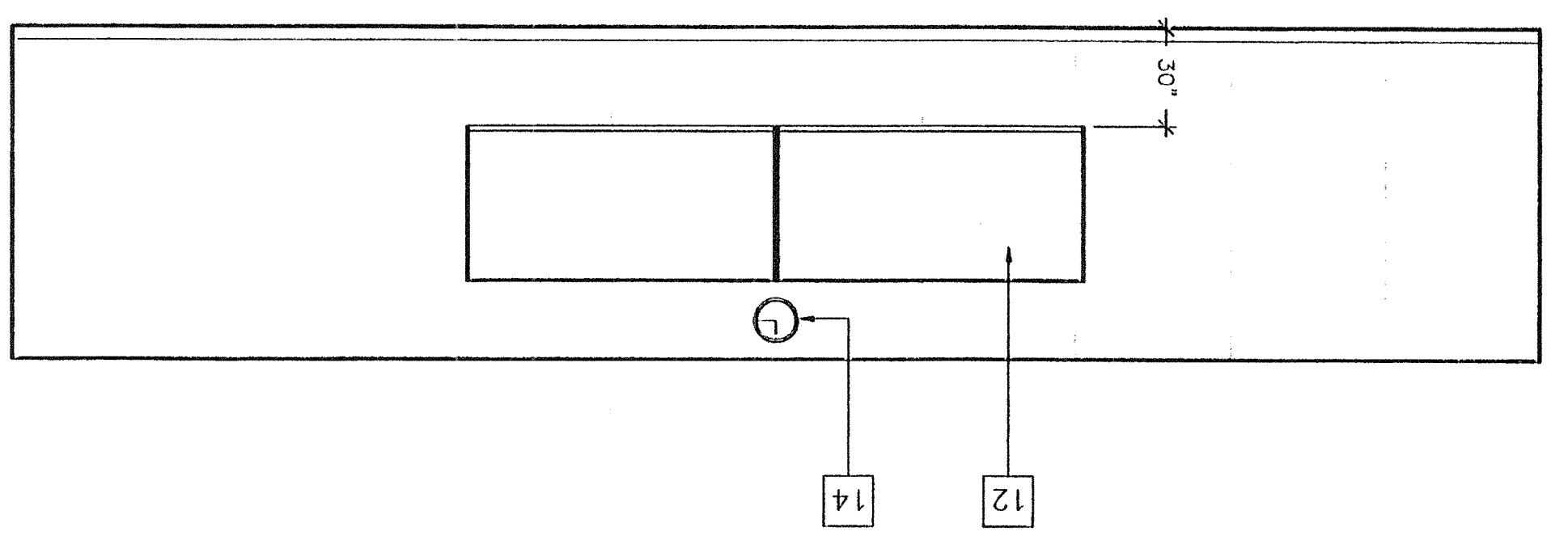
SCALE

FRONT ELEVATION ④



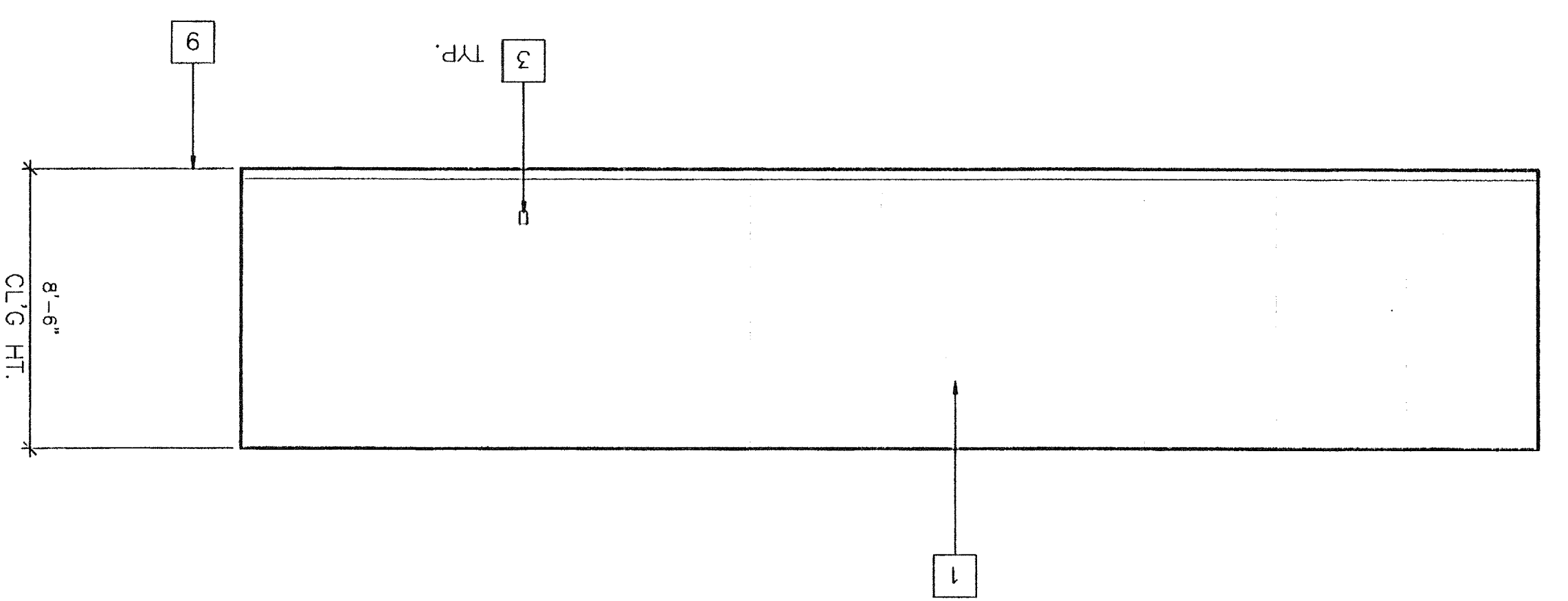
SCALE

RIGHT ELEVATION ③



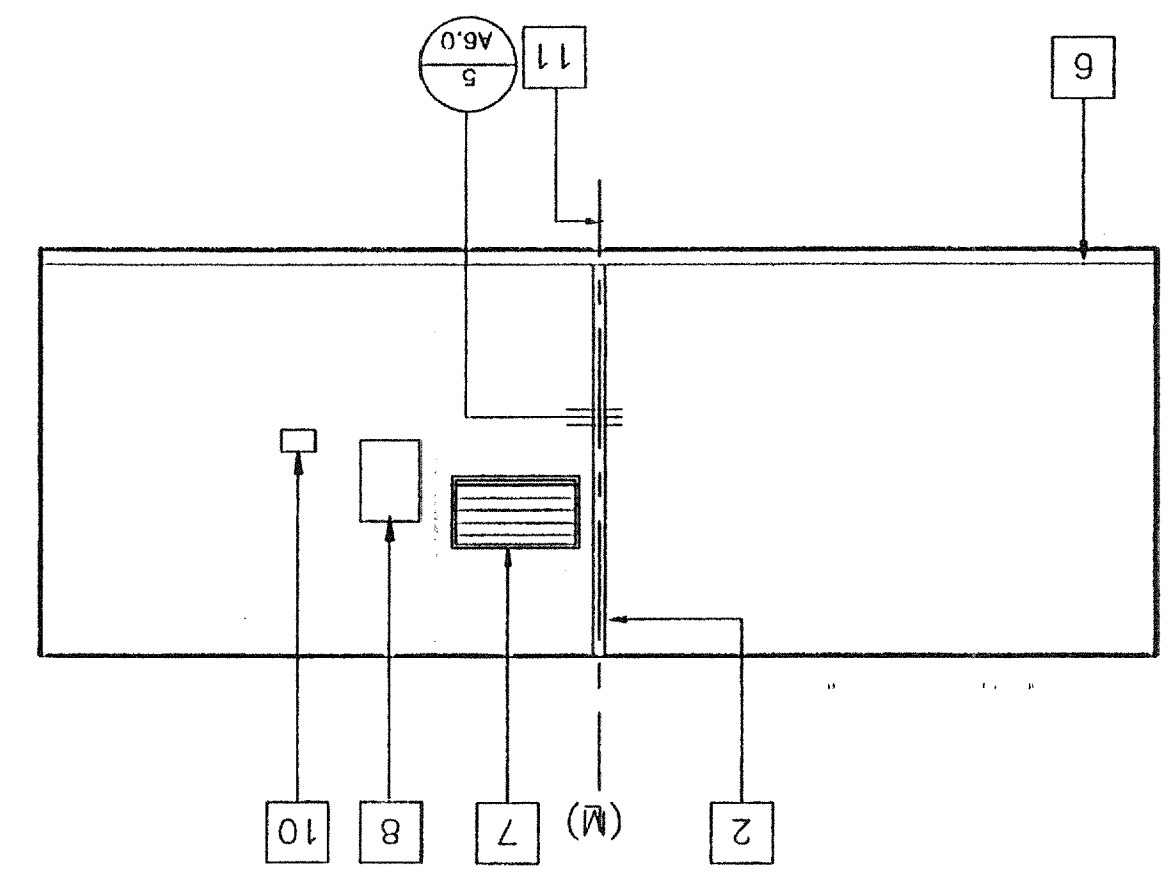
SCALE

LEFT ELEVATION ①



SCALE

REAR ELEVATION ②



KEY NOTES

- ① TYPICAL INTERIOR FINISH (SEE FINISH SCHEDULE SHTAS.0)
- ② CLOSURE AT MODULAR JOINT
- ③ DUPLEX WALL RECEPTACLE [EL]
- ④ FIRE ALARM PULL STATION [EL]
- ⑤ LIGHT SWITCH [EL]
- ⑥ TOP SET BASE (TYPICAL) SEE FINISH SCHED.
- ⑦ RETURN AIR GRILL
- ⑧ ELECTRICAL PANEL [EL]
- ⑨ FINISH FLOOR
- ⑩ THERMOSTAT [HV]
- ⑪ MODULAR JOINT
- ⑫ 8040 MARKBOARD, TYPICAL FOR (2)
- ⑬ FIRE EXTINGUISHER: SLBS, DRY CHEMICAL WITH 2A-10BC U.L. RATING ON WALL MTD.
- ⑭ 12" DIA. ELECTRIC CLOCK [EL]

REVISED
 REC AT [Signature]
 DATE: _____
 PROJECT NO. 101527
 DATE: 02-2-1999
 OFFICE OF REGULATION SERVICES
 DIV. OF THE STATE ARCHITECT

PROJECT NO. _____

FILE PATH: _____

A4.0

MODTECH Index No.
 MODTECH PROJECT NO.
 DATE:
 CHECKED BY:
 DATE:
 DRAWN BY:

PC-