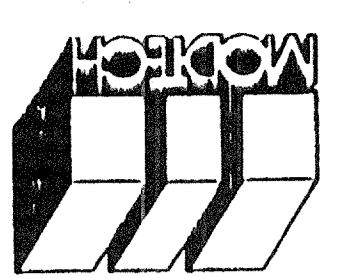


REVISIONS
PC - 270
DATE: APR 19 1999
REVISED



MODTECH INC.
2830 BARRETT AVENUE
PERRIS, CALIF. 92572
PH (909) 943-4014
FAX (909) 940-0427

EXTERIOR ELEVATIONS

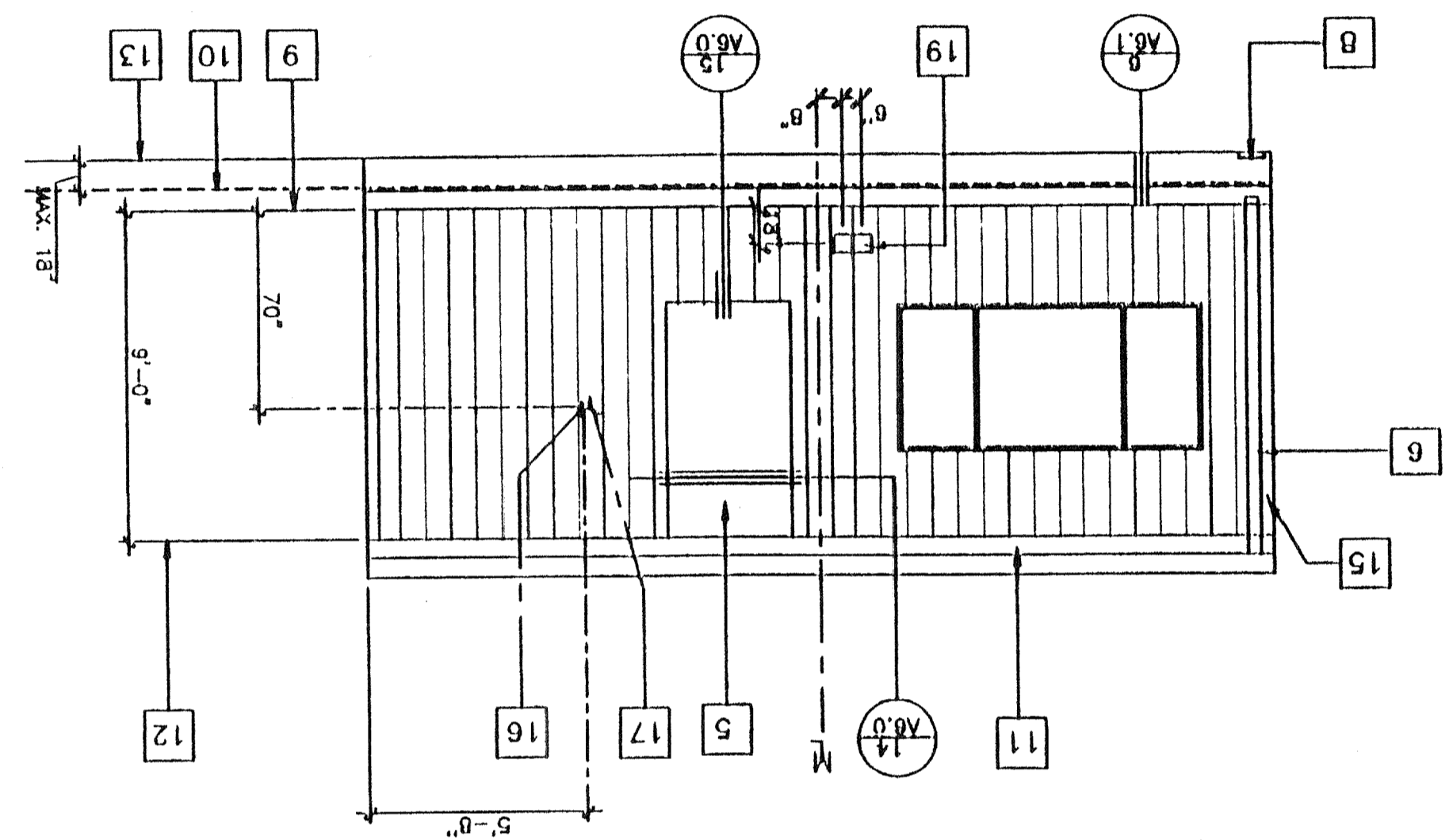
A3.0

PROJECT NUMBER: MODTECH, INC. 1999

DRAWN BY: RNT
DATE: 2-2-99
CHECKED BY: [Signature]
DATE: 2-2-99
PROJECT NO. [Signature]
MODTECH, INC.

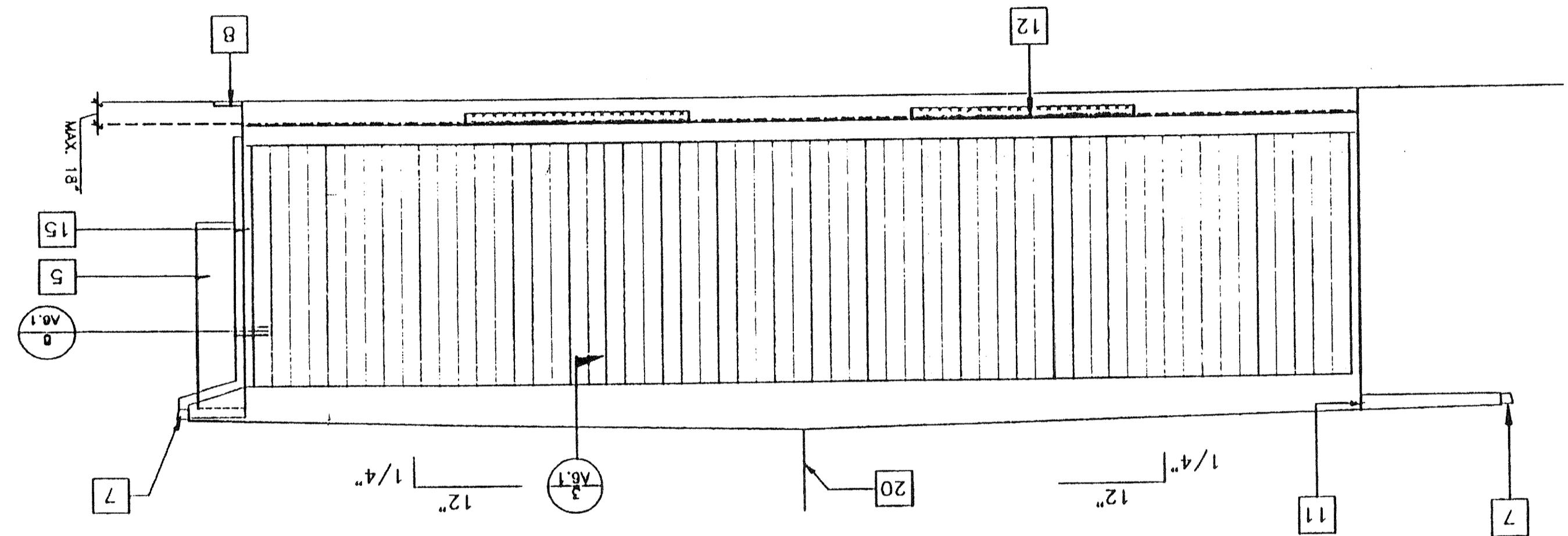
PROJECT NO. PC-270

3 REAR ELEVATION
1/4" = 1'-0"

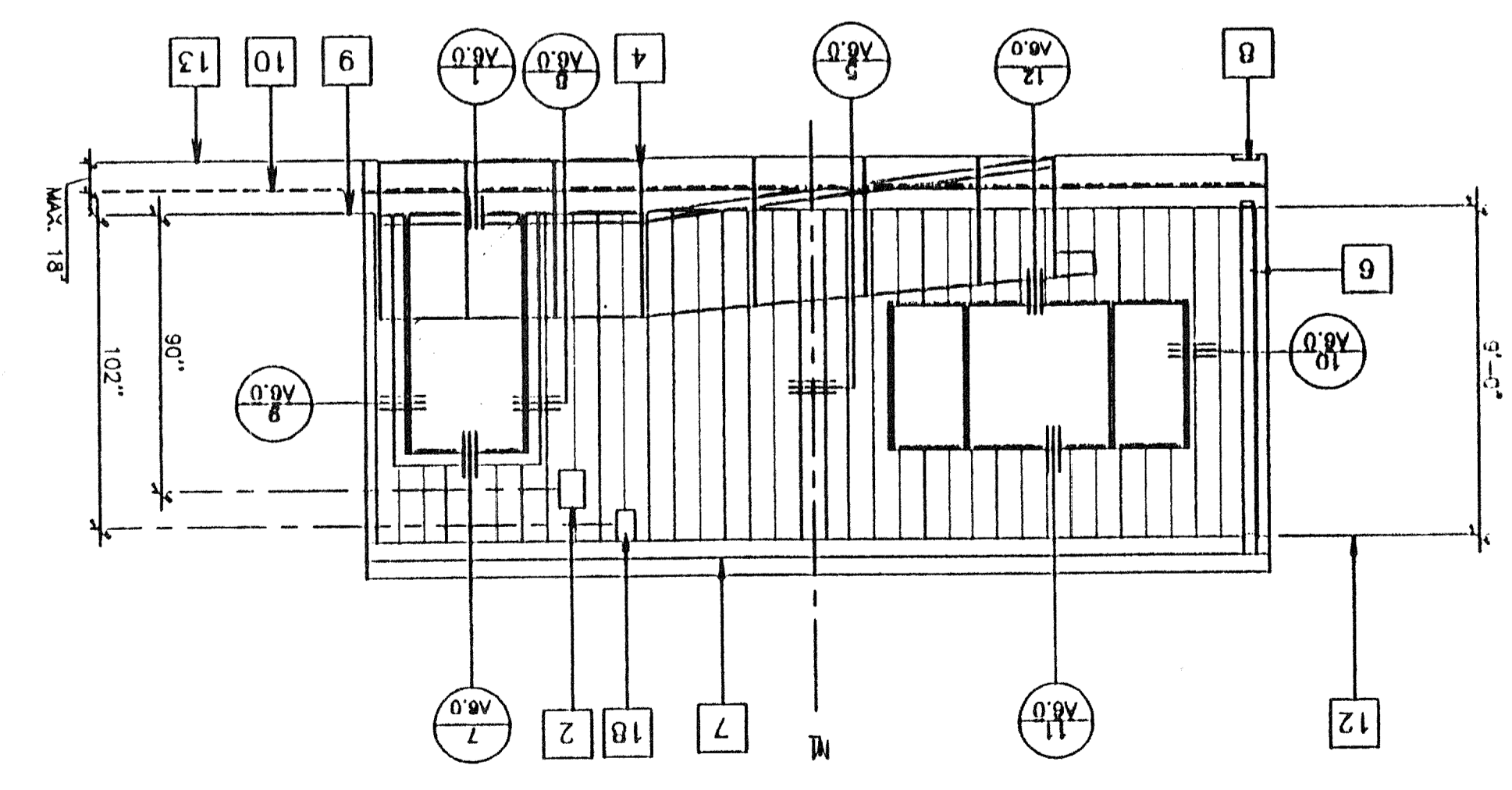


"A" = SHOWN
"B" = OPPOSITE

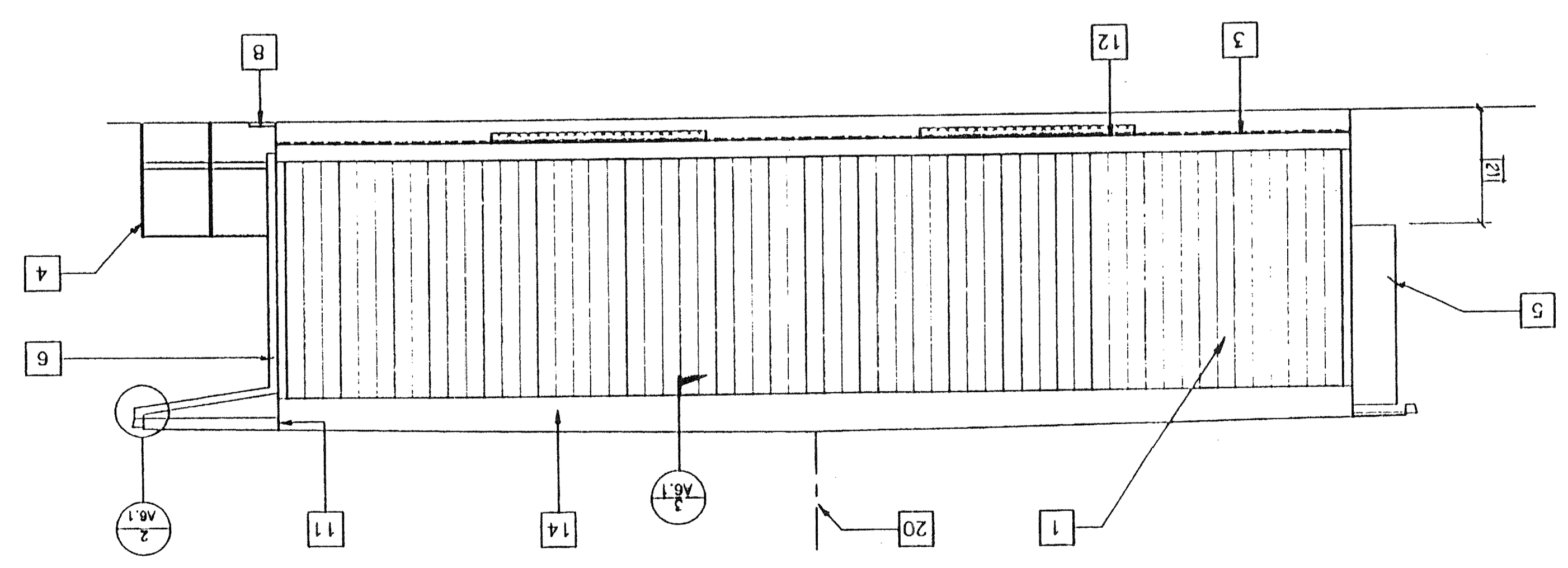
4 RIGHT ELEVATION
1/4" = 1'-0"



1 FRONT ELEVATION
1/4" = 1'-0"



2 LEFT ELEVATION
1/4" = 1'-0"

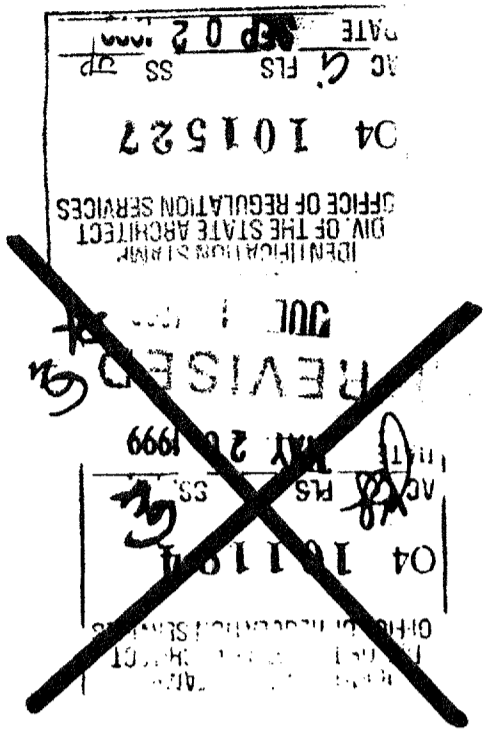


NOTES

1. SEE FOUNDATION PLAN FOR SIZE AND LOCATION OF UNDER FLOOR VENTS.

- 1 TYPICAL EXTERIOR SIDING (SEE A5.0)
- 2 EXTERIOR LIGHT FIXTURE (SEE SPEC'S)
- 3 TOP OF SKIRTING
- 4 RAMP AND LANDING SEE SHT. R-1
- 5 HVAC UNIT. SEE [HV]
- 6 DOWNSPOUT (TYP.) FOR (2). FASTEN TO BLD'G. TYP 3 PLACES (SEE B/A6.1)
- 7 CONTINUOUS GUTTER WITH DOWNSPOUT (LOCATION OF DOWNSPOUT SHOWN ON ROOF PLAN) SEE A2.0
- 8 SPLASH BLOCK (BY OTHERS)
- 9 FINISH FLOOR LINE
- 10 BOTTOM FLANGE OF FLOOR BEAM
- 11 ROOF HEADER
- 12 VENT. SEE FOUNDATION PLAN
- 13 FINISH GRADE
- 14 ROOF BEAM SEE [SIR]
- 15 COLUMN SEE [SIR]
- 16 ELECTRICAL STUB-OUT SEE [EL]
- 17 GROUND STUB-OUT SEE [EL]
- 18 J BOX FOR EXT. FA HORN SEE [EL]
- 19 NEMA 6" X 6" GUTTER BOX SEE [EL]
- 20 RIDGE
- 21 IF UNIT IS LOCATED SO AS TO BE IN ANY PATH OF TRAVEL, PROVIDE PROTECTION TO 27. (BY DISTRICT)

KEY NOTES



FILE PATH: PC270A30.DWG