

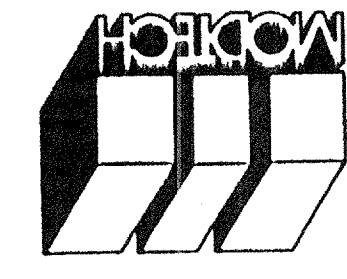
Electrical Engineer's Seal

Mechanical Engineer's Seal

Structural Engineer's Seal

Architect's Seal

IDENTIFICATION STAMP
DIV. OF THE STATE ARCHITECT
OFFICE OF REGULATION SERVICES
APPL
AC: FLS SS
DATE



MODTECH INC.
2830 BARRETT AVENUE
PERRIS, CALIF. 92572
PH (909) 943-4014
FAX (909) 940-0427

FLOOR PLAN

A1.0

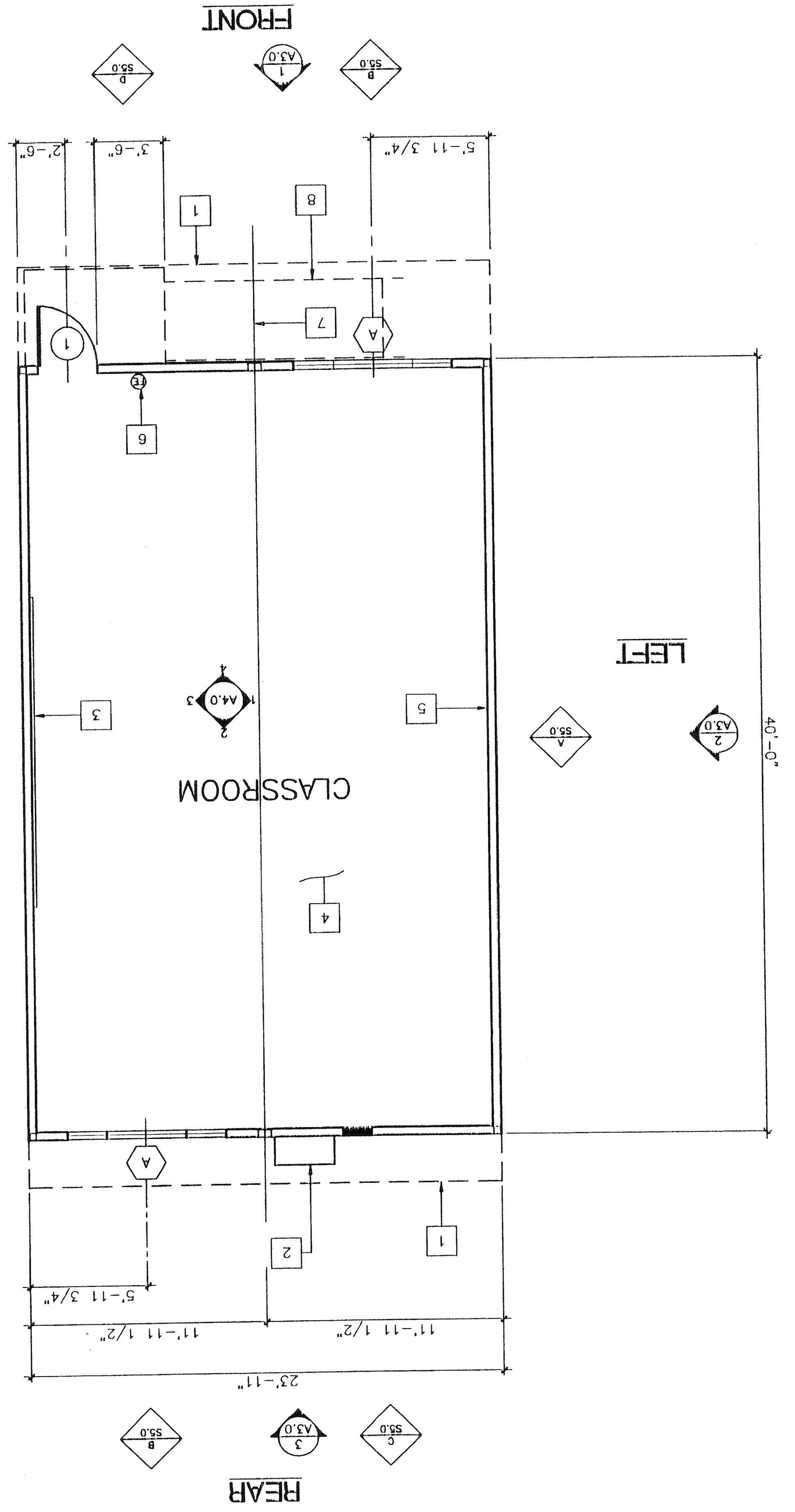
MODTECH Index No.
PROJECT NO: XXXX
DATE:
CHECKED BY:
DATE:
DRAWN BY:

PROJECT NUMBER: XXXX © MODTECH, INC. 1998

BASED ON PC-270

FLOOR PLAN
SCALE: 1/4" = 1'
24' X 40'

A-SHOWN
B-OPPOSITE



KEY NOTES

- 1 ROOF OVERHANG
- 2 HVAC UNIT [HV]
- 3 2- 8'x4' MARKER BOARDS (SEE SPECS. FOR TYPE)
- 4 FINISH FLOORING: (SEE FINISH SCHED.) A5.0
- 5 TYPICAL INTERIOR FINISH (SEE FINISH SCHE-DULE) A5.0
- 6 FIRE EXTINGUISHER - 5 LBS. DRY CHEMICAL WITH 2A-10BC U.L. RATING ON WALL MTD. BRACKET, HANDLE AT 48" A.F.F.
- 7 MODLINE (M. TYPICAL)
- 8 RAMP (SEE R1.0 & R2.0)

NOTES

1. METAL TAG ON ALL MODULES, MECHANICALLY ATTACHED TO REAR EXTERIOR OF BUILDING SHOW D.S.A. APPLICATION NUMBER, MANUFACTURER'S NAME AND SERIAL NUMBER, AND ROOF & FLOOR DESIGN LIVE LOAD, AND DESIGN WIND LOAD.
2. INSULATION MATERIALS INSTALLED WITHIN FLOOR-CEILING ASSEMBLIES, ROOF-CEILING ASSEMBLIES, WALLS, CRAWL SPACES, OR ATTICS SHALL HAVE A FLAME-SPREAD RATING NOT TO EXCEED 25 AND A SMOKE DENSITY NOT TO EXCEED 450. EXCEPTIONS: 1. FOAM PLASTIC INSULATION SHALL COMPLY WITH SEC. 2602.2 WHEN MATERIALS ARE INSTALLED IN CONCEALED SPACES OF TYPES I, II, IV, AND V CONSTRUCTION. THE FLAME SPREAD AND SMOKE-DEVELOPED LIMITATIONS DO NOT APPLY TO FACINGS IF THE FACING IS INSTALLED IN SUBSTANTIAL CONTACT WITH THE UNEXPOSED SURFACE OF THE CEILING, FLOOR OR WALL FINISH. (SEC. 707.3 CBC.)

REVISED

ppk

MAY 1 1999

04 10119

MAY 20 1999

OFFICE OF REGULATION SERVICES

101527

6.6.15 SS SP

PROJECT NO: XXXX

FILE PATH: -A10.DWG