

SHEET NOTES

- CONTRACTOR SHALL CALL UNDERGROUND SERVICE ALERT AT 811 TO LOCATE UNDERGROUND UTILITIES AT LEAST 2 WORKING DAYS PRIOR TO DIGGING. CONTRACTOR SHALL FIELD VERIFY LOCATION AND DEPTH OF EXISTING IMPROVEMENTS PRIOR TO START OF CONSTRUCTION.
- VERIFY LOCATION OF ALL BUILDINGS AND APPENDICES ON ARCHITECTURAL AND CIVIL PLANS.
- FIELD VERIFY LOCATION ON ALL UNDERGROUND UTILITIES PRIOR TO TRENCHING. SCHEDULE AND COORDINATE ALL SITE WORK WITH OWNER PRIOR TO ANY TRENCHING.
- CONTRACTOR SHALL VERIFY LOCATION & REQUIREMENTS OF ALL DEVICES/EQUIPMENT REQUIRING ELECTRICAL CONNECTION PRIOR TO BID PROPOSAL, ROUGH-IN, AND FINISH.
- CONTRACTOR SHALL, IN ROUTING ALL CIRCUITS, INCREASE CONDUCTOR & CONDUIT SIZE TO ALLOW FOR VOLTAGE DROP SHOULD THE CONTRACTOR EXCEED ROUTING INDICATED ON DRAWINGS. ENGINEER OF RECORD MUST BE NOTIFIED PRIOR TO ANY DEVIATIONS FROM APPROVED PLAN CHECK (PERMIT SET) DRAWINGS.
- ALL 90 DEGREE CONDUIT BENDS AND RISERS SHALL BE PVC COATED RIGID STEEL.
- CONTRACTOR SHALL COORDINATE AND PROVIDE ALL SITE ELECTRICAL SERVICE REQUIREMENTS WITH SERVING UTILITY.
- ALL SERVICE ENTRANCE EQUIPMENT SHOP DRAWINGS SHALL BE SUBMITTED TO THE LOCAL UTILITY COMPANY FOR APPROVAL, WITH WRITTEN APPROVAL RECEIVED PRIOR TO SUBMISSION TO ELECTRICAL ENGINEER FOR APPROVAL.
- VERIFY LOCATION OF ALL EQUIPMENT ON ARCHITECTURAL AND CIVIL PLANS.
- MINIMUM CONDUIT BURIAL DEPTH IS 24", 36" MINIMUM BELOW STREETS AND PARKING LOTS, FOR 0-600 VOLT SYSTEMS.
- PROVIDE CODE SIZED EQUIPMENT GROUNDING CONDUCTORS IN ALL OCCUPIED CONDUITS.
- 1" CONDUIT MINIMUM UNDERGROUND.
- COORDINATE WORK WITH OTHER TRADES. OBTAIN ALL DRAWINGS THAT WILL REQUIRE COORDINATION AND PROVIDE ALL ELECTRICAL CONNECTIONS, DEVICES, AND WIRING REQUIRED, WHETHER SHOWN ON THE ELECTRICAL DRAWINGS OR NOT.
- CONTRACTOR SHALL FURNISH AND INSTALL PULL BOXES AS REQUIRED TO INSTALL CONDUCTORS PER CONDUCTOR MANUFACTURERS RECOMMENDATIONS, PER THE NATIONAL ELECTRICAL CODE, AND PER LOCAL AUTHORITIES HAVING JURISDICTION.
- FIELD CONDITIONS GOVERN DEMOLITION AND NEW CONSTRUCTION. CONTRACTOR SHALL VERIFY ACTUAL CONDITIONS PRIOR TO START OF WORK. THE ARCHITECT/ENGINEER SHALL BE NOTIFIED OF POSSIBLE FIELD PROBLEMS PRIOR TO DEMOLITION. CONTRACTOR SHALL NOTIFY DISTRICT REPRESENTATIVE OF WORK BEING PERFORMED. COORDINATE WITH DISTRICT REPRESENTATIVE.
- ALL EMPTY CONDUITS SHALL BE PROVIDED WITH DIMENSIONED NYLON PULL STRING.
- CONTRACTOR SHALL FIELD VERIFY LOCATION OF ALL UNDERGROUND UTILITIES PRIOR TO ANY EXCAVATION OR TRENCHING. CONTRACTOR SHALL PROTECT ALL EXISTING/REMAINING UTILITIES IN PLACE. CONTRACTOR, AT HIS SOLE EXPENSE, SHALL REPAIR ANY UTILITY SYSTEMS DAMAGED DURING CONSTRUCTION.
- VERIFY AND PROVIDE ALL UTILITY SYSTEMS PER SERVING UTILITY STANDARD REQUIREMENTS.
- CONTRACTOR SHALL PROVIDE CONCRETE ENCASEMENT AT ALL VERIZON COMPANY CONDUIT BENDS PER VERIZON COMPANY REQUIREMENTS.

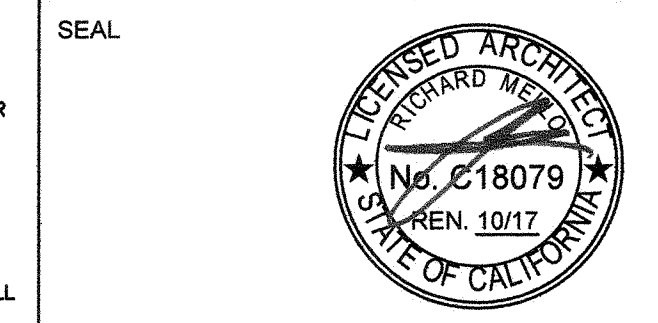
KEY NOTES

- (NOTE: THESE NOTES MAY NOT APPEAR ON ALL SHEETS)
- PROVIDE SAFETY SWITCH CAPABLE OF BEING LOCKED IN THE "ON" AND "OFF" POSITIONS. SAFETY SWITCH SHALL BE PROVIDED WITH FACTORY INSTALLED PROVISIONS FOR LOCK-ON AND FOR LOCK-OFF GUARD KIT. SAFETY SWITCH SHALL OPEN ALL UNGROUND CONDUCTORS SIMULTANEOUSLY. PROVIDE 30A, 240V-SINGLE THROW FUSIBLE SWITCH, 3-WIRE (2 BLADES & FUSE HOLDERS, 1 NEUTRAL), NEMA 3R, #HZZ1NB-LOCK1-SPLD, BY SQUARE D COMPANY.
 - RISE UP INTO POLE MOUNTED MARQUEE SIGN. PROVIDE ALL NECESSARY WORK & MATERIALS TO MAKE ALL REQUIRED POWER CONNECTIONS TO MARQUEE SIGN.

PRIME CONSULTANT

IBI ARCHITECTURE PLANNING

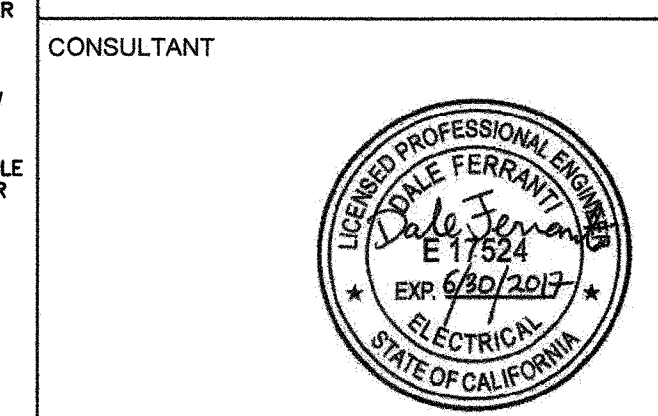
San Luis Obispo
4119 Broad Street, Suite 210
San Luis Obispo, CA 93401
805.546.0433 fax: 805.546.0504
ibigroup.com



COPYRIGHT: Any reproduction or distribution for any purpose other than authorized by IBI Group is forbidden.

COPYRIGHT 2016 IBI GROUP

REVISIONS			
NO.	DATE	APPRD.	DESCRIPTION



AGENCY INFORMATION:

AGENCY TRACKING NO. 63321-220
FILE NO. 15-6

IDENTIFICATION STAMP
DIV OF THE STATE ARCHITECT
OFFICE OF REGULATION SERVICES

03-117333
AC FLS TC SS BY
DATE 01-31-17

BAKERSFIELD CITY SCHOOL DISTRICT

NEW MARQUEE AT FRANKLIN
ELEMENTARY SCHOOL
2400 TRUXTON AVENUE, BAKERSFIELD, CA 93301

OPSC or OSHPD PROJ. NO:
PROJECT NO:
DRAWN BY: VZ
CHKD BY: DF
ISSUE DATE: 1/16/2017
SHEET TITLE

**ENLARGED
MARQUEE
SIGN ELECTRICAL
PLAN**

SHEET NUMBER

E2.1

(X) PANEL "C"

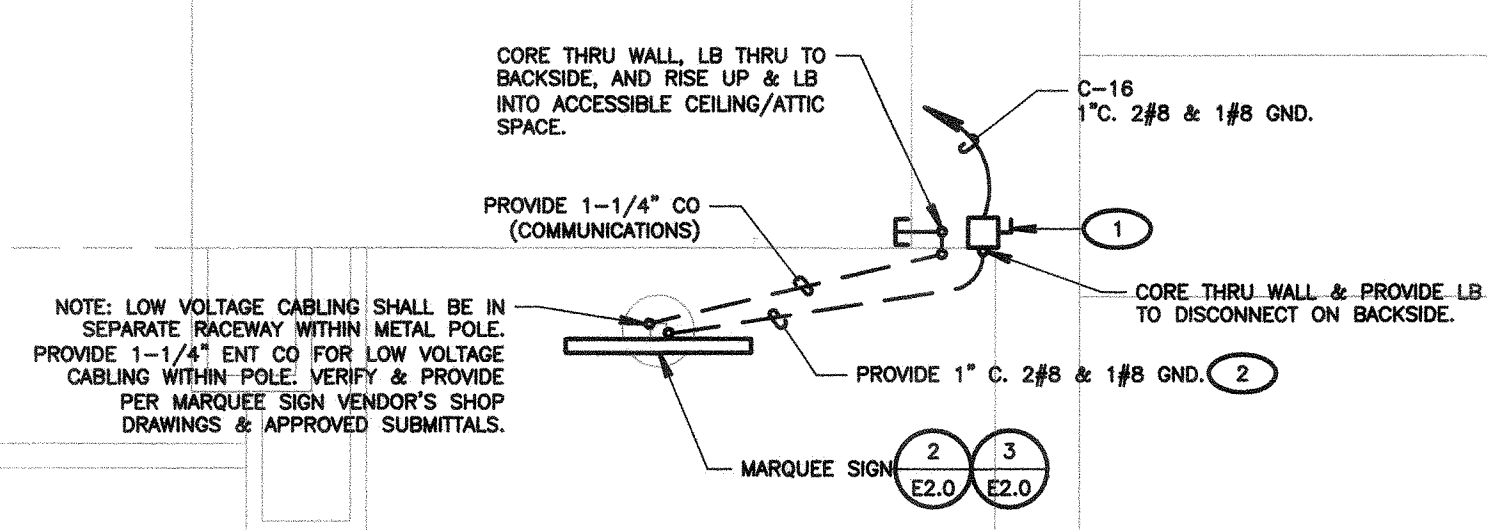
(X) PANEL

PANEL C		VOLTAGE 208Y/ 120V PHASE 3 WIRE 4	MAIN MAIN LUGS ONLY												
SOURCE		A.I.C. 10,000	ENCLOSURE NEMA 3R												
PANEL LOCATION HALLWAY		BUS AMPERE RATING: 225	MOUNTING FLUSH												
C K T	VA LOAD			L C L	OUTLETS	CIRCUIT BREAKER	BUS	CIRCUIT BREAKER	OUTLETS	L C L	LOAD DESCRIPTION	VA LOAD			C K T
	LINE A	LINE B	LINE C									LINE A	LINE B	LINE C	
1															2
3															4
5															6
7															8
9															10
11															12
13															14
15											MARQUEE SIGN	1260			16
17															18
19															20
21															22
23															24
25															26
27															28
29															30
31															32
33															34
35															36
37															38
39															40
41															42
SUBTOTALS												1260			
NOTES:												LINE TOTALS	1,260		
												LCL ADDER			
												TOTAL VA/PH	1,260		
												LINE AMPS	11		

NOTE: LOAD ASSESSED TO BE ADEQUATE FOR SCOPE.

EXISTING PANEL GENERAL NOTES:
1. UON, ALL LOAD DESCRIPTIONS ARE EXISTING.
2. UON, ALL CIRCUIT BREAKERS DESIGNATED IN PANEL SCHEDULE ARE EXISTING.

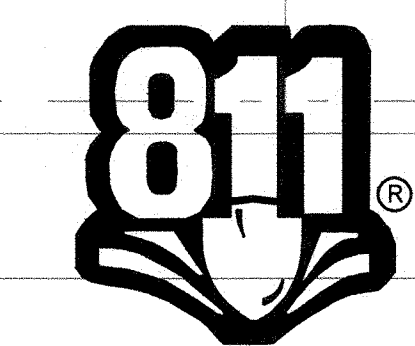
PANEL SCHEDULE WORK LEGEND:
O NEW LOAD CONNECTED TO EXISTING SPARE BRANCH CIRCUIT BREAKER.



NOTE: DISCONNECTING MEANS SHALL COMPLY WITH NEC ARTICLE 600.6.

NOTE: CONTRACTOR SHALL PROVIDE ALL GROUNDING & BONDING PER NEC ARTICLE 600.7, 600.7(B) BONDING. METAL PARTS AND EQUIPMENT OF SIGNS AND OUTLINE LIGHTING SYSTEMS SHALL BE BONDED TOGETHER AND TO THE ASSOCIATED TRANSFORMER OR POWER-SUPPLY EQUIPMENT GROUNDING CONDUCTOR OF THE BRANCH CIRCUIT OR FEEDER SUPPLYING THE SIGN OR OUTLINE LIGHTING SYSTEM AND SHALL MEET THE REQUIREMENTS OF 250.90.

NOTE: REFER TO E2.0 FOR LOCATION OF GROUND LUG AT MARQUEE SIGN FOR GROUNDING AND BONDING PROVISIONS, PER NEC 600.7. PROVIDE BONDING AND GROUNDING CONDUCTORS EQUAL IN SIZE TO THE EQUIPMENT GROUNDING CONDUCTOR AND BOND TO ALL GROUNDING LUGS ASSOCIATED WITH MARQUEE SIGN(S). VERIFY AND PROVIDE PER MARQUEE SIGN VENDOR'S SHOP DRAWINGS AND APPROVED SUBMITTALS.



Know what's below.
Call before you dig.

FERRANTI ENGINEERING
CONSULTING
ELECTRICAL ENGINEERS
1211 MARICOPA HWY,
SUITE 250
OJAI, CA 93023
(805) 705-4772
DALEFERRANTI@LIVE.COM