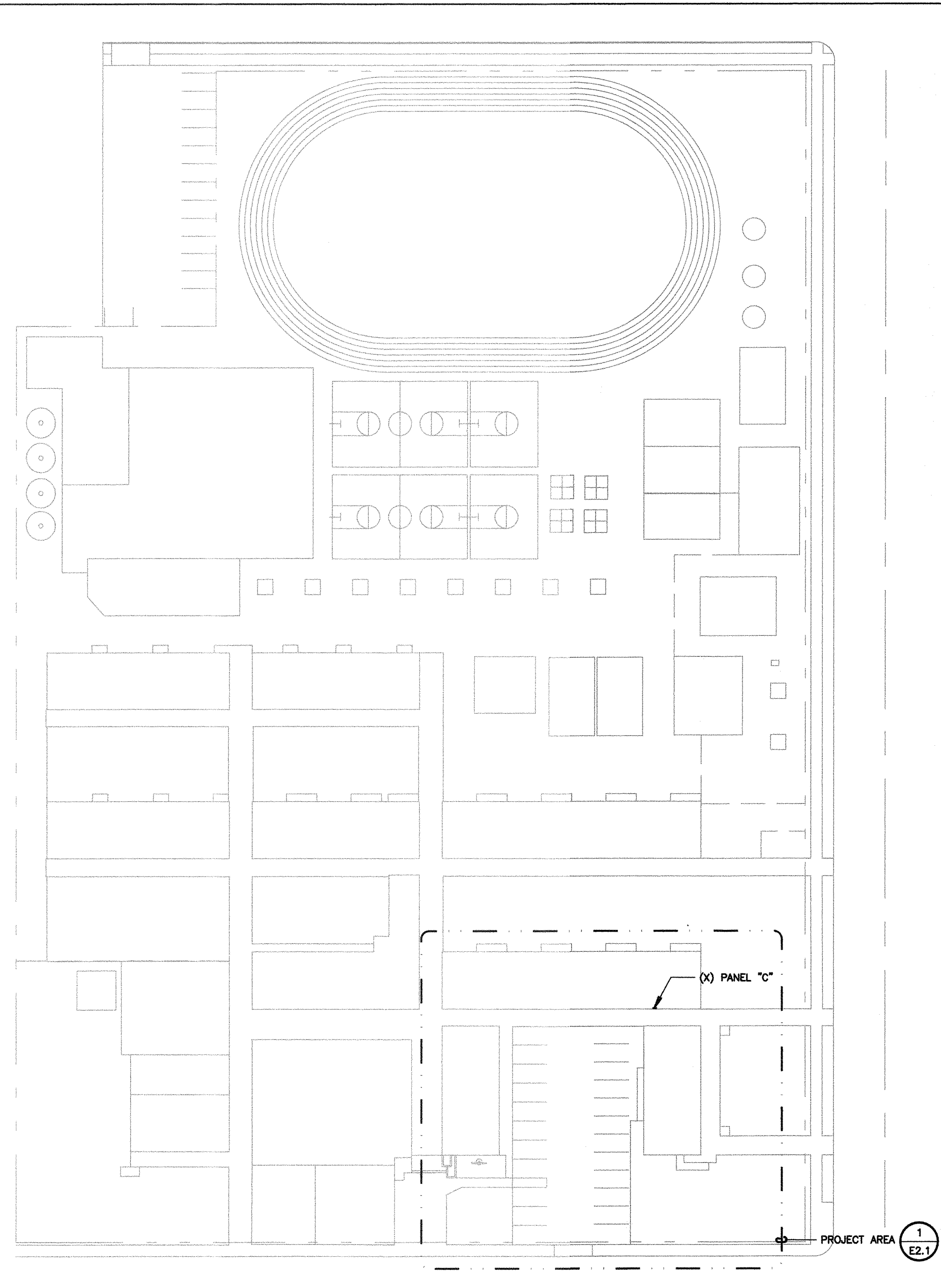
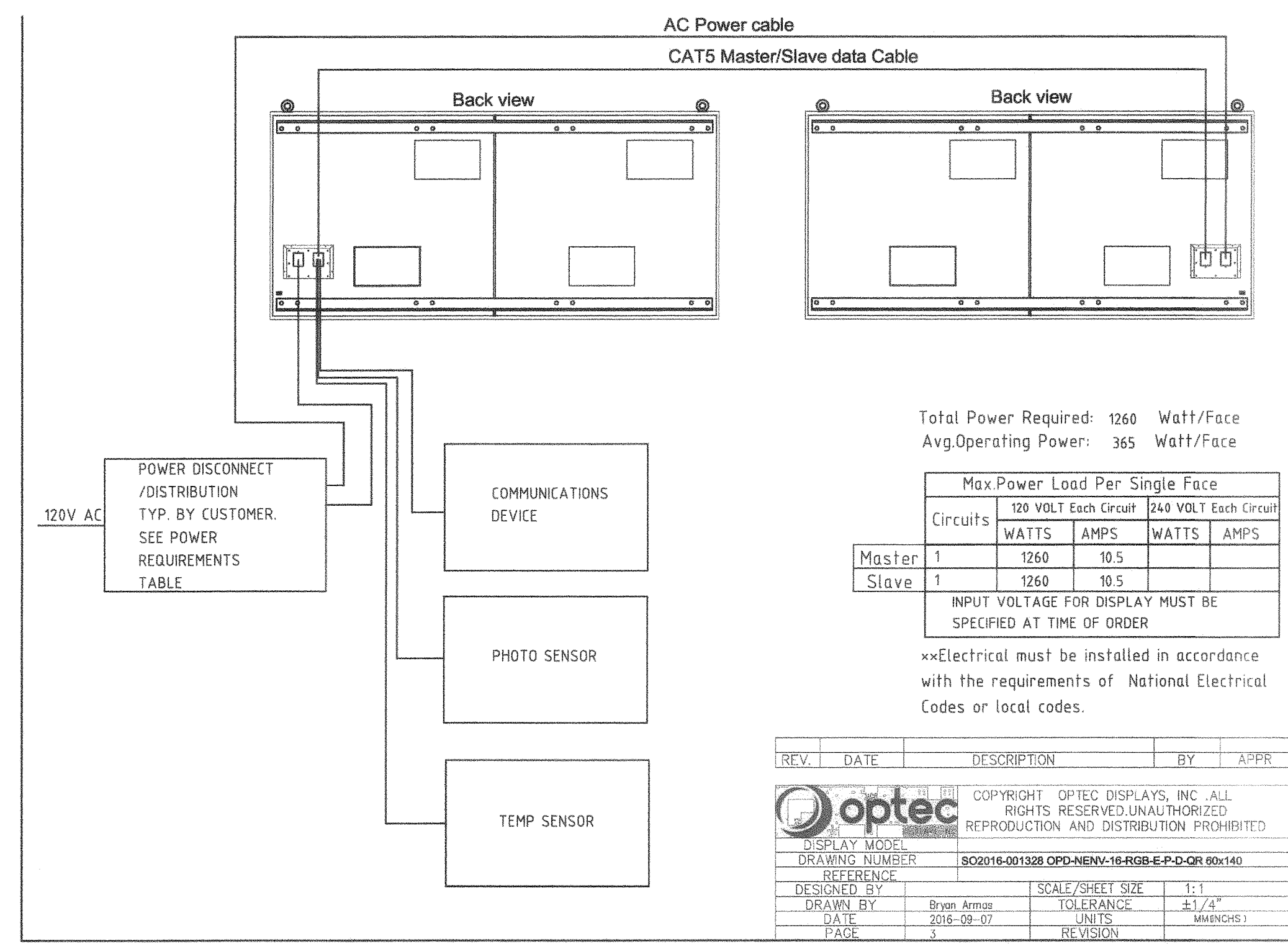


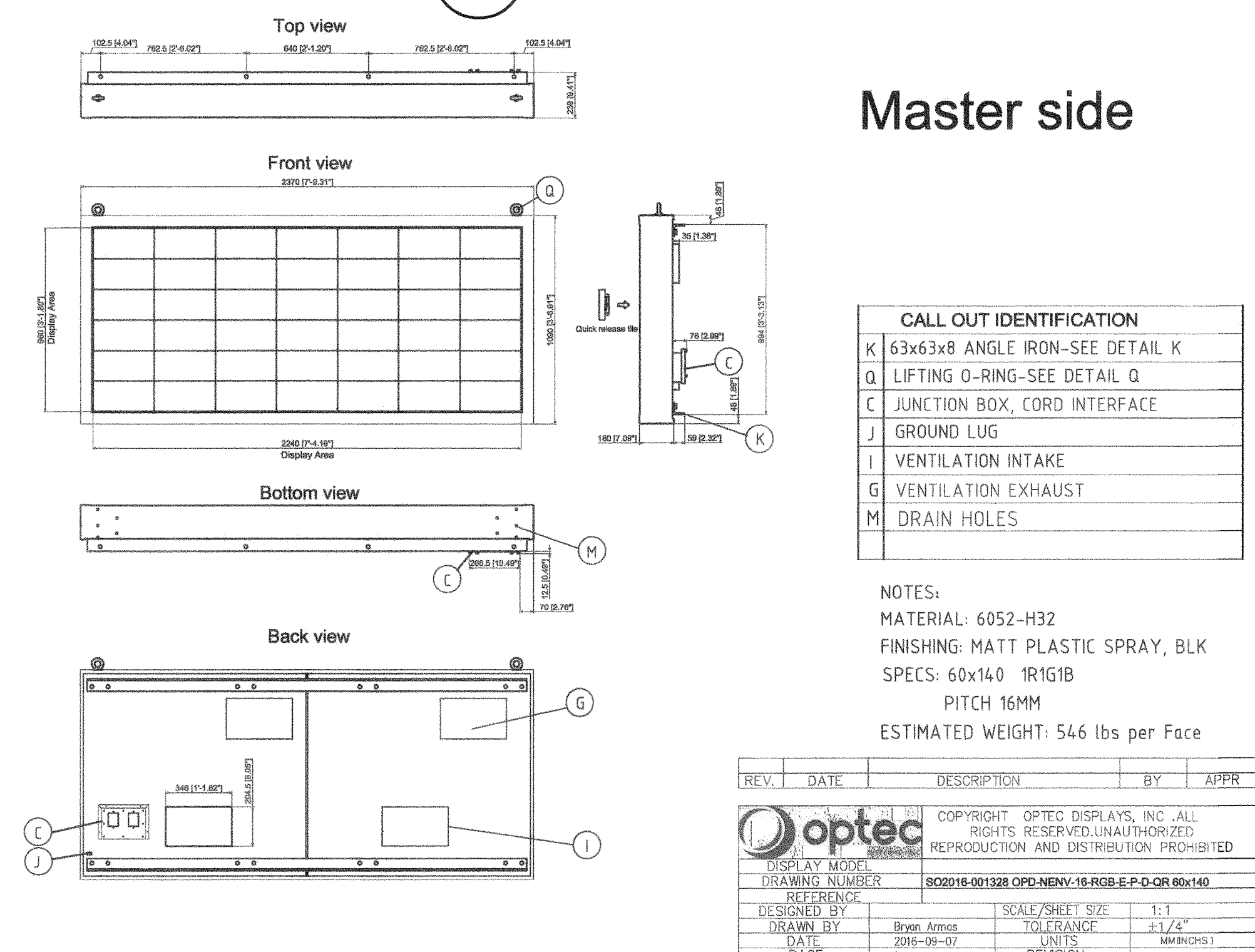
4 PARTIAL SINGLE LINE DIAGRAM
NOT TO SCALE



1 SITE ELECTRICAL PLAN
SCALE: 1"=50'-0"



3 MARQUEE SIGN VENDOR DRAWING
SCALE: NOT TO SCALE



2 MARQUEE SIGN VENDOR DRAWING
SCALE: NOT TO SCALE

SHEET NOTES

- CONTRACTOR SHALL CALL UNDERGROUND SERVICE ALERT AT 811 TO LOCATE UNDERGROUND UTILITIES AT LEAST 2 WORKING DAYS PRIOR TO DIGGING. CONTRACTOR SHALL FIELD VERIFY LOCATION AND DEPTH OF EXISTING IMPROVEMENTS PRIOR TO START OF CONSTRUCTION.
- VERIFY LOCATION OF ALL BUILDINGS AND APPURTENANCES ON ARCHITECTURAL AND CIVIL PLANS.
- FIELD VERIFY LOCATION ON ALL UNDERGROUND UTILITIES PRIOR TO TRENCHING, SCHEDULE AND COORDINATE ALL SITE WORK WITH OWNER PRIOR TO ANY TRENCHING.
- CONTRACTOR SHALL VERIFY LOCATION & REQUIREMENTS OF ALL DEVICES/EQUIPMENT REQUIRING ELECTRICAL CONNECTION PRIOR TO BID PROPOSAL, ROUGH-IN, AND FINISH.
- CONTRACTOR SHALL, IN ROUTING ALL CIRCUITS, INCREASE CONDUCTOR & CONDUIT SIZE TO ALLOW FOR VOLTAGE DROP SHOULD THE CONTRACTOR EXCEED ROUTING INDICATED ON DRAWINGS. ENGINEER OF RECORD MUST BE NOTIFIED PRIOR TO ANY DEVIATIONS FROM APPROVED PLAN CHECK (PERMIT SET) DRAWINGS.
- ALL 90 DEGREE CONDUIT BENDS AND RISERS SHALL BE PVC COATED RIGID STEEL.
- CONTRACTOR SHALL COORDINATE AND PROVIDE ALL SITE ELECTRICAL SERVICE REQUIREMENTS WITH SERVING UTILITY.
- ALL SERVICE ENTRANCE EQUIPMENT SHOP DRAWINGS SHALL BE SUBMITTED TO THE LOCAL UTILITY COMPANY FOR APPROVAL, WITH WRITTEN APPROVAL RECEIVED PRIOR TO SUBMISSION TO ELECTRICAL ENGINEER FOR APPROVAL.
- VERIFY LOCATION OF ALL EQUIPMENT ON ARCHITECTURAL AND CIVIL PLANS.
- MINIMUM CONDUIT BURIAL DEPTH IS 24", 36" MINIMUM BELOW STREETS AND PARKING LOTS, FOR 0-600 VOLT SYSTEMS.
- PROVIDE CODE SIZED EQUIPMENT GROUNDING CONDUCTORS IN ALL OCCUPIED CONDUITS.
- CONDUIT MINIMUM UNDERGROUND.
- COORDINATE WORK WITH OTHER TRADES, OBTAIN ALL DRAWINGS THAT WILL REQUIRE COORDINATION AND PROVIDE ALL ELECTRICAL CONNECTIONS, DEVICES, AND WIRING REQUIRED, WHETHER SHOWN ON THE ELECTRICAL DRAWINGS OR NOT.
- CONTRACTOR SHALL FURNISH AND INSTALL PULL BOXES AS REQUIRED TO INSTALL CONDUCTORS PER CONDUCTOR MANUFACTURERS RECOMMENDATIONS, PER THE NATIONAL ELECTRICAL CODE, AND PER LOCAL AUTHORITIES HAVING JURISDICTION.
- FIELD CONDITIONS GOVERN DEMOLITION AND NEW CONSTRUCTION. CONTRACTOR SHALL VERIFY ACTUAL CONDITIONS PRIOR TO START OF WORK. THE ARCHITECT/ENGINEER SHALL BE NOTIFIED OF POSSIBLE FIELD PROBLEMS PRIOR TO DEMOLITION. CONTRACTOR SHALL NOTIFY DISTRICT REPRESENTATIVE OF WORK BEING PERFORMED. COORDINATE WITH DISTRICT REPRESENTATIVE.
- ALL EMPTY CONDUITS SHALL BE PROVIDED WITH DIMENSIONED NYLON PULL STRING.
- CONTRACTOR SHALL FIELD VERIFY LOCATION OF ALL UNDERGROUND UTILITIES PRIOR TO ANY EXCAVATION OR TRENCHING. CONTRACTOR SHALL PROTECT ALL EXISTING/REMAINING UTILITIES IN PLACE. CONTRACTOR, AT HIS SOLE EXPENSE, SHALL REPAIR ANY UTILITY SYSTEMS DAMAGED DURING CONSTRUCTION.

PRIME CONSULTANT

IBI ARCHITECTURE PLANNING

San Luis Obispo
4119 Broad Street, Suite 210
San Luis Obispo, CA 93401
805.546.0433 fax: 805.546.0504
ibigroup.com

SEAL

COPYRIGHT:
Any reproduction or distribution for any purpose other than authorized by IBI Group is forbidden.

COPYRIGHT 2016 IBI GROUP

REVISIONS

NO.	DATE	APPRD.	DESCRIPTION

AGENCY INFORMATION:

AGENCY TRACKING NO. 63321-220
FILE NO. 15-6

CONSULTANT

IDENTIFICATION STAMP
DIV. OF THE STATE ARCHITECT
OFFICE OF REGULATION SERVICES

03-117333

AC FLS TCS SS BY
DATE 01-31-17

BAKERSFIELD CITY SCHOOL DISTRICT

NEW MARQUEE AT FRANKLIN ELEMENTARY SCHOOL
2400 TRUXTON AVENUE, BAKERSFIELD, CA 93301

OPSC or OSHPD PROJ. NO:
PROJECT NO:
DRAWN BY: VZ
CHKD BY: DF
ISSUE DATE: 1/16/2017
SHEET TITLE

SITE ELECTRICAL PLAN

SHEET NUMBER

E2.0



Know what's below.
Call before you dig.

FERRANTI ENGINEERING CONSULTING
ELECTRICAL ENGINEERS
1211 MARICOPA HWY, SUITE 250
OJAI, CA 93023
(805) 705-4772
DALEFERRANTI@LIVE.COM