

Donald W. Ruffolo, AIA
Mark E. Russell, AIA
Carl G. Elliott, AIA
K. Darrah Huffman, AIA
Kenneth A. Kella, AIA
Jeffery P. Kossatz, AIA
Tommy W. Preston, AIA
Larry G. Wiggins, AIA

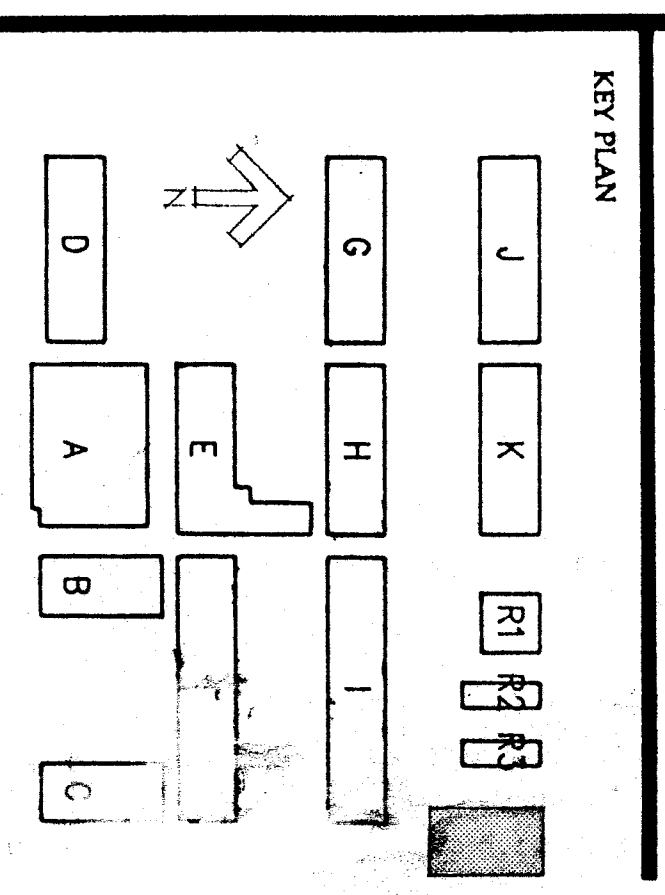
Rentfro-Russell & Associates, Inc.
4000 Sandstone Way, Suite 200, Bakersfield, California 93309 (805) 327-7075

ED CRESWELL
STRUCTURAL ENGINEER
1700 L STREET, S.E. II, (805) 328-2021
BAKERSFIELD, CALIFORNIA 93304
Edward H. Creswell, S.E. 101

PROJECT
BAKERSFIELD CITY SCHOOL DISTRICT

FRANKLIN ELEMENTARY SCHOOL MODERNIZATION

THE ABOVE DRAWINGS AND SPECIFICATIONS AND SHALL BE OPEN TO THE PUBLIC FOR REVIEW AND COMMENT FOR A PERIOD OF 15 DAYS FROM THE DATE OF THE LAST PUBLICATION OF THE DRAWINGS AND SPECIFICATIONS. ANY COMMENTS SHOULD BE SUBMITTED TO THE OFFICE OF THE CITY ENGINEER, BAKERSFIELD, CALIFORNIA, BY THE END OF THE REVIEW PERIOD. THE CITY ENGINEER'S REVIEW IS LIMITED TO TECHNICAL ASPECTS AND DOES NOT CONSTITUTE AN ENDORSEMENT OF THE PROJECT OR A GUARANTEE OF THE ACCURACY OF THE INFORMATION PROVIDED. THE CITY ENGINEER'S REVIEW IS LIMITED TO TECHNICAL ASPECTS AND DOES NOT CONSTITUTE AN ENDORSEMENT OF THE PROJECT OR A GUARANTEE OF THE ACCURACY OF THE INFORMATION PROVIDED.



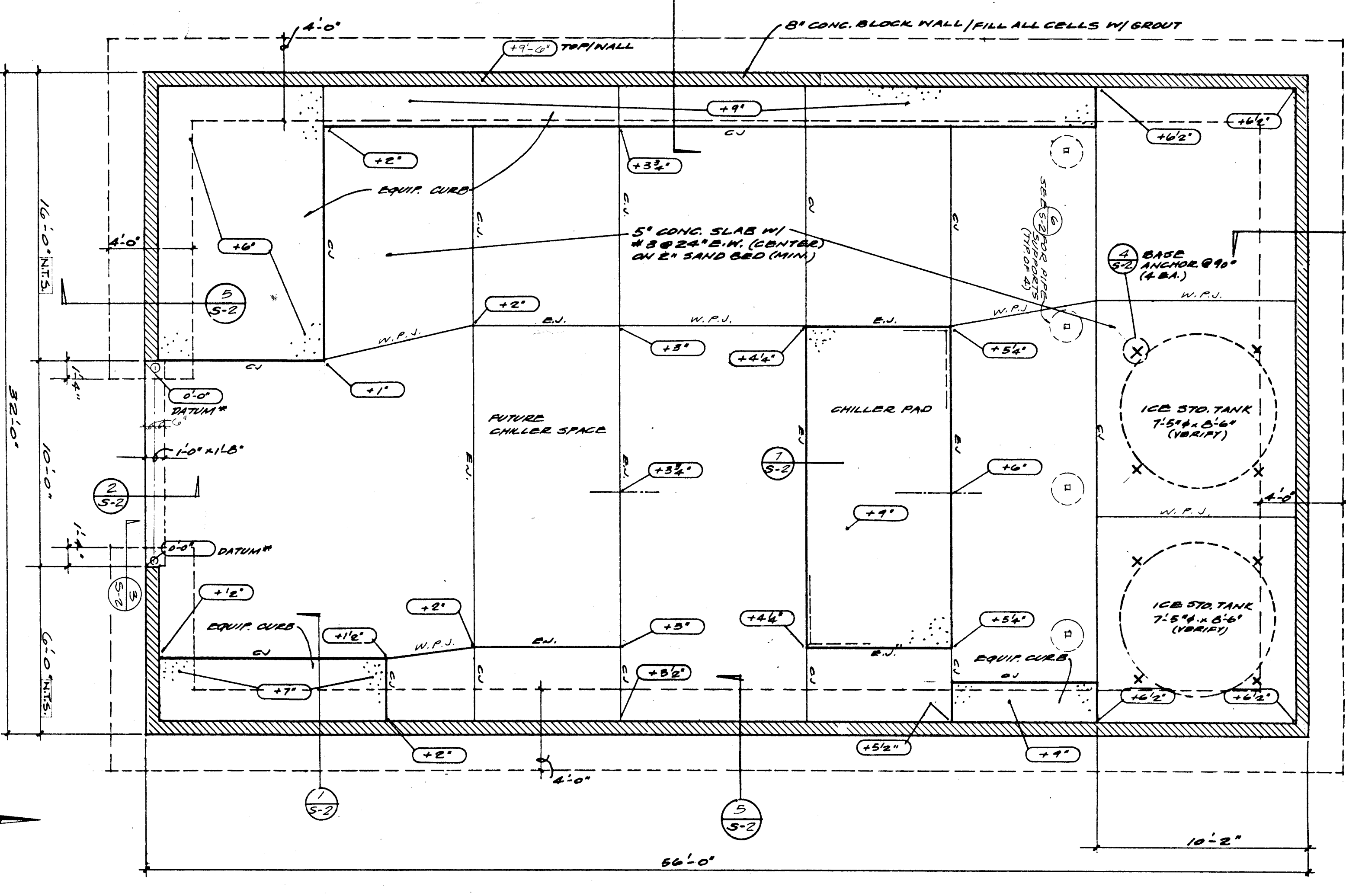
DATE APPROVED _____
DATE _____
DATE _____

DATE	ISSUED FOR	BY
2-10-89	O.S.A. PLAN CHECK	Ed Creswell
4-5-89	Permits	Ed Creswell

SHEET TITLE
MECHANICAL EQUIPMENT ENCLOSURE

APPROVED/ARCHITECT: *Tommy W. Preston*
CHECKED: *Ed Creswell*
DRAWN BY: *Ed Creswell*
DATE: 4/2/89
PROJECT NO. 88-248K

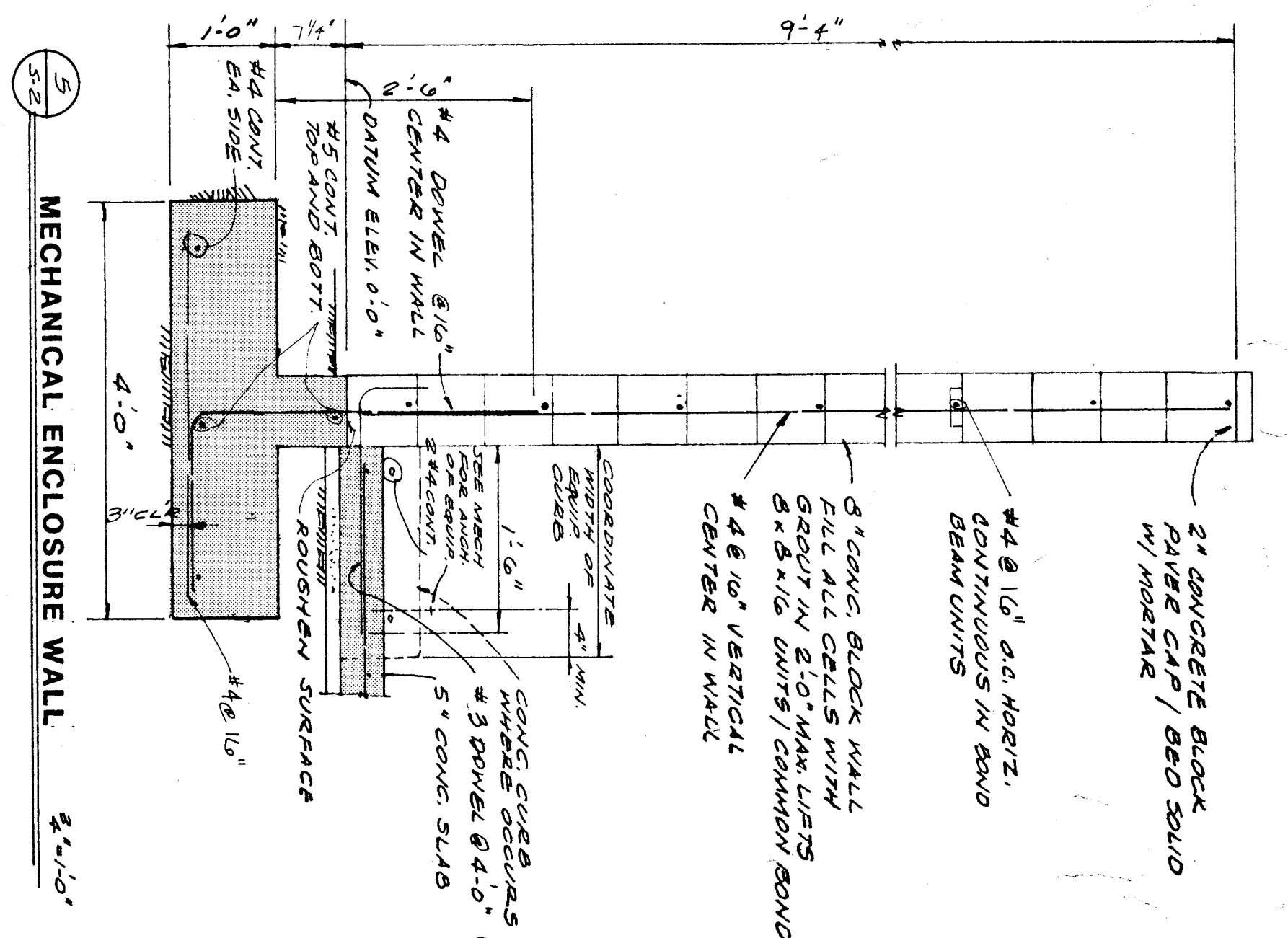
SHEET NUMBER
S-2
2 OF 2 SHEETS



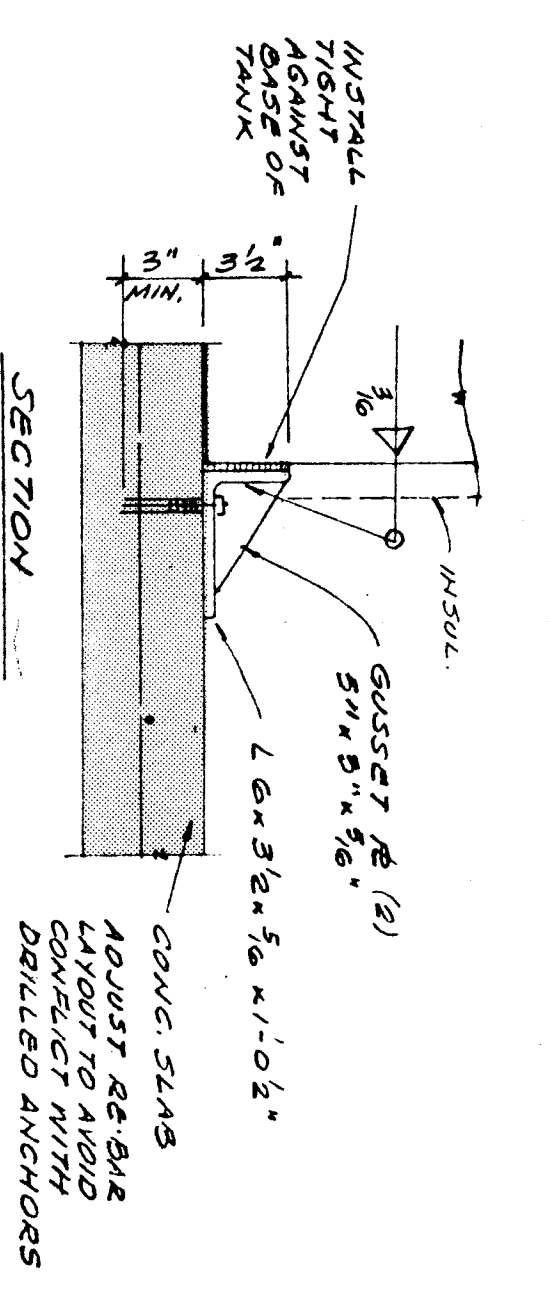
MECHANICAL EQUIPMENT ENCLOSURE AND FOUNDATION PLAN 1/4"=1'-0"

FOUNDATION PLAN NOTES

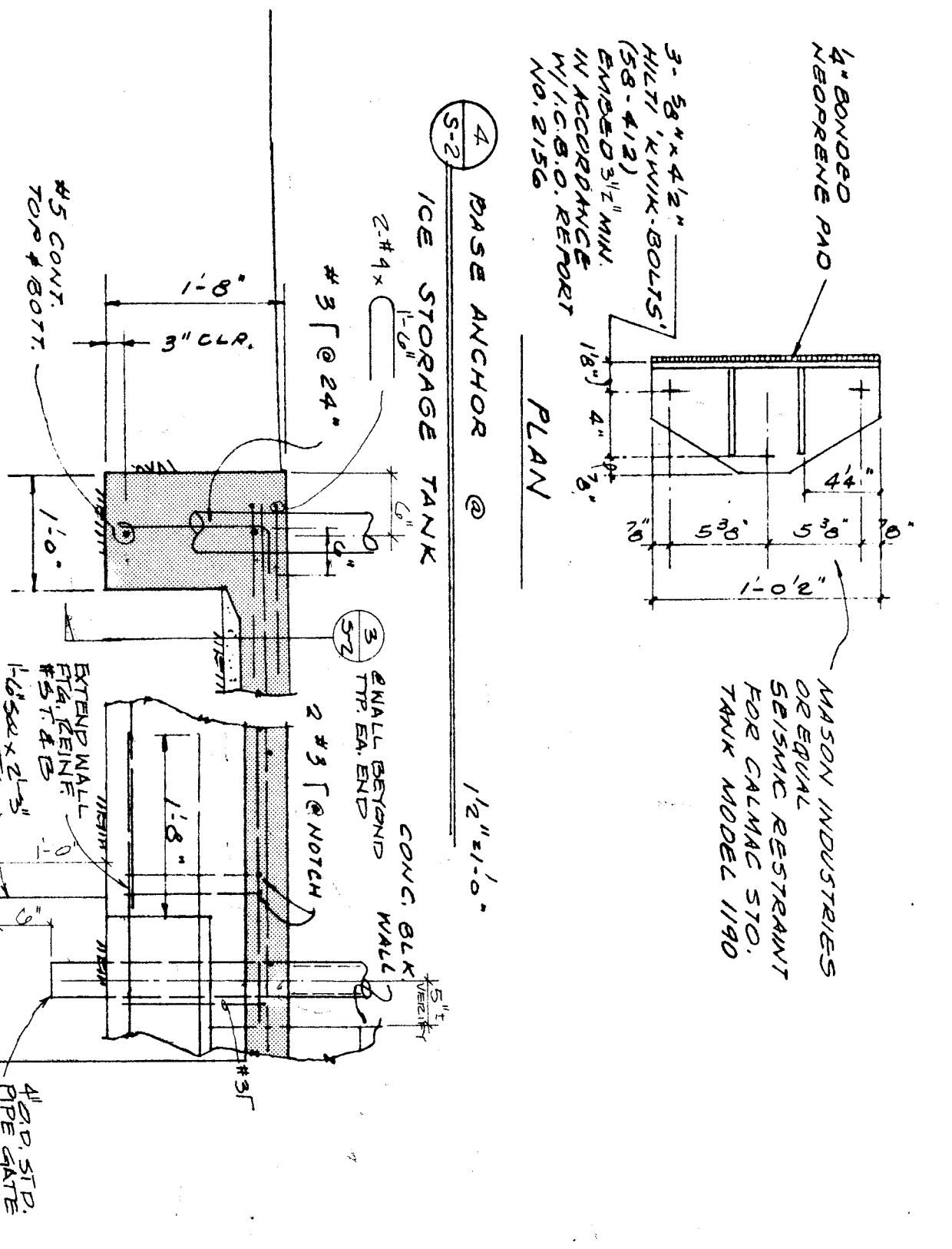
- (XX) INDICATES ELEVATION ABOVE (+) OR DEPTH, BOTTOM OF FOOTING.
- C.-J. CONSTRUCTION OR CONTROL JOINT.
- M.P.-J. MEASURED PLANE JOINT.
- E.-J. EXPANSION JOINT.
- * SEE SITE GRADING PLAN (DRAWING C-1) FOR DRAIN SLAB ELEVATION.
- UNLESS SPECIFICALLY DIMENSIONED OTHERWISE.
- SEE SHEET S-1 FOR GENERAL NOTES AND TYPICAL DETAILS.
- COORDINATE LOCATION AND SIZE OF MECH. & ELEC. EQUIP.
- SEE (S) FOR TYPICAL FOUNDATION NOTES & DETAILS.



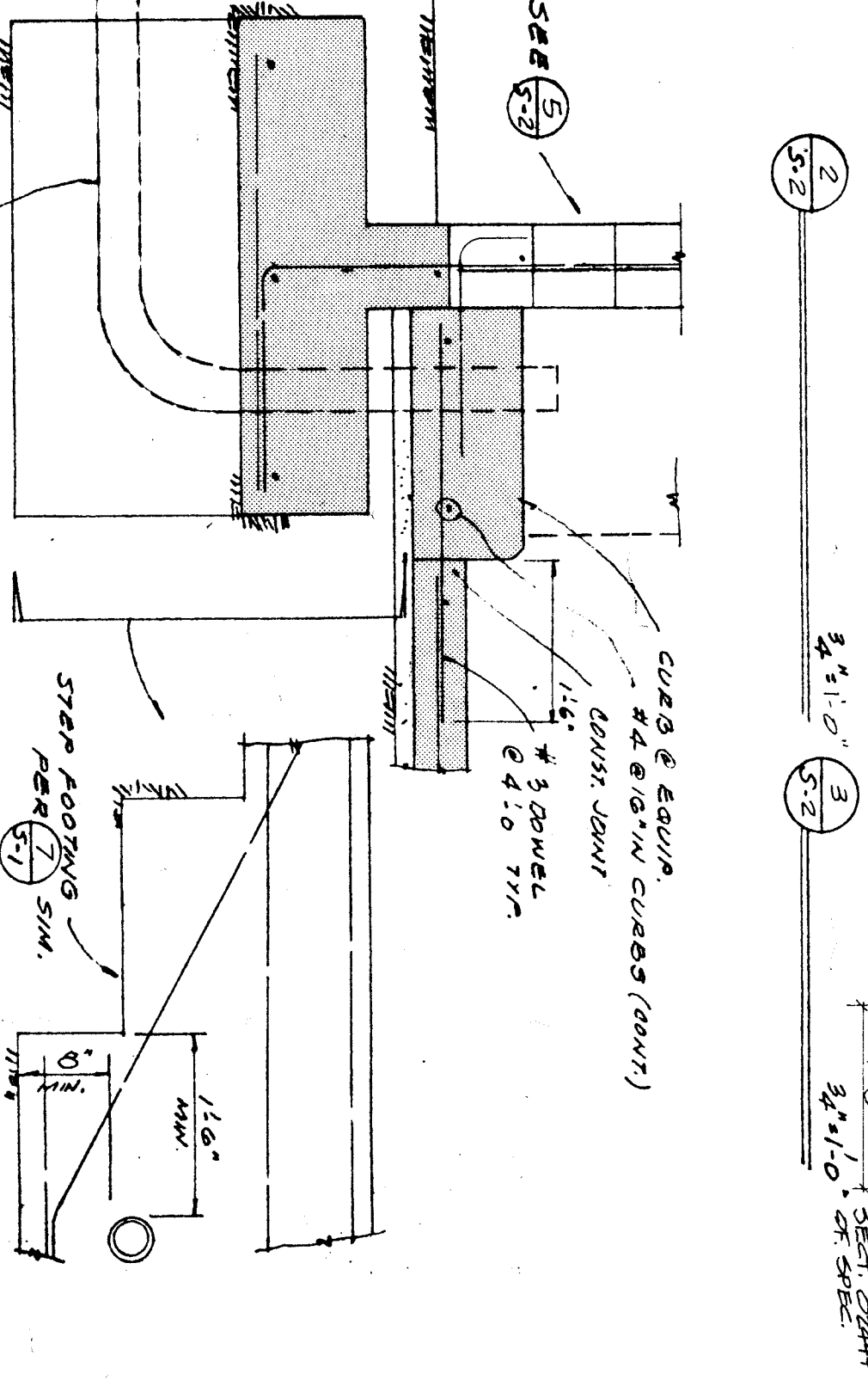
MECHANICAL ENCLOSURE WALL 3/4"=1'-0"



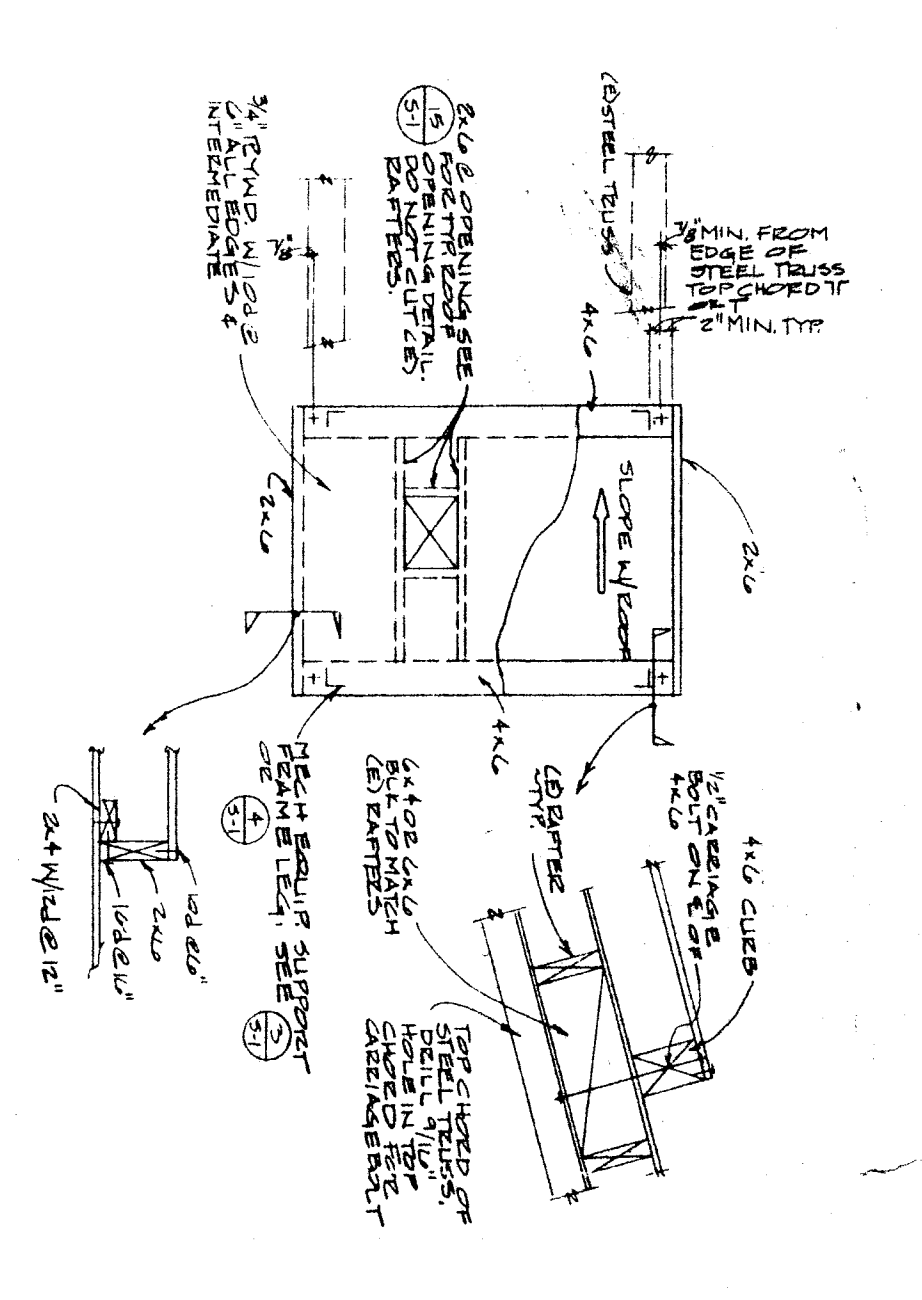
SECTION



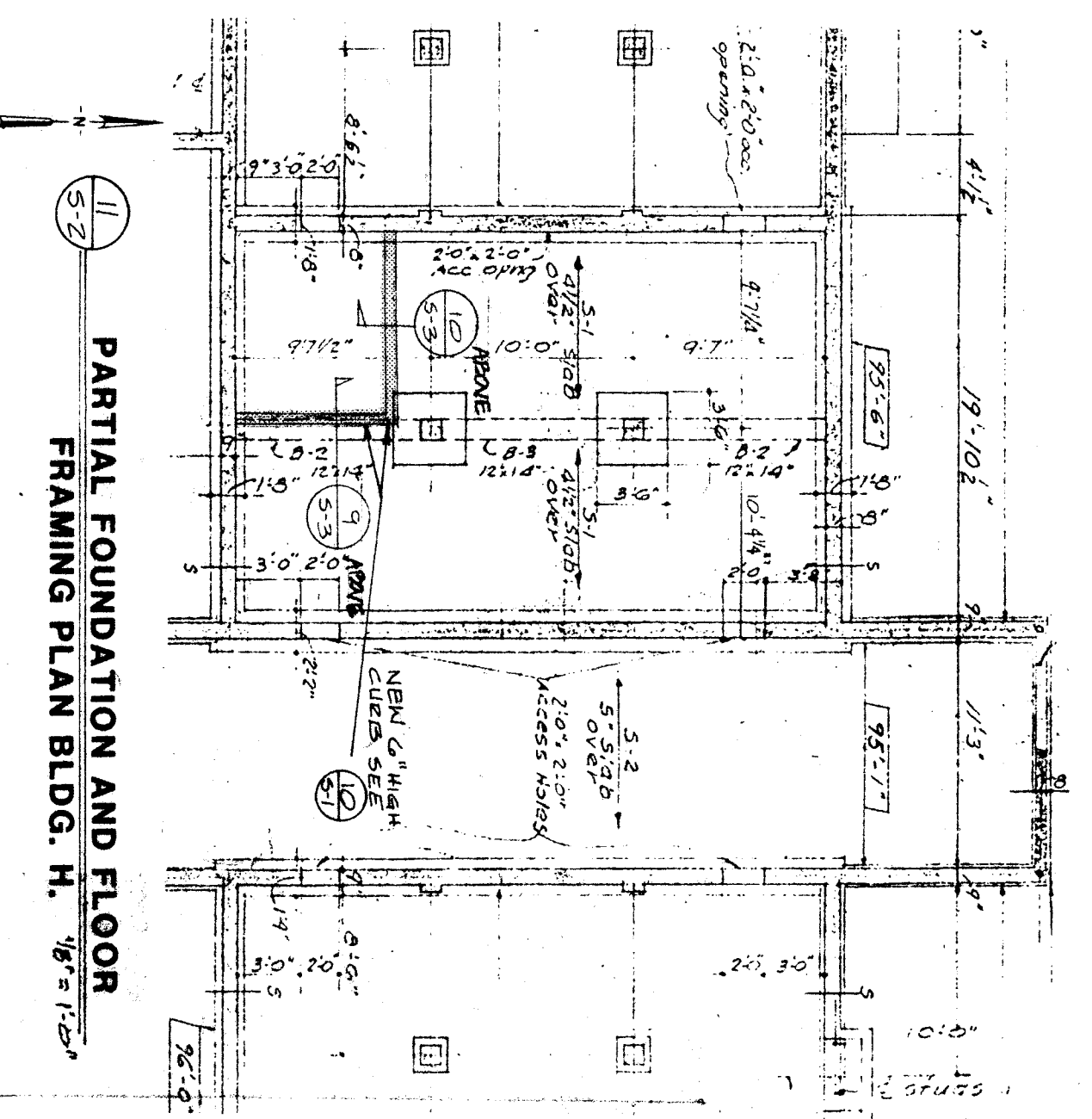
ICE STORAGE TANK PLAN



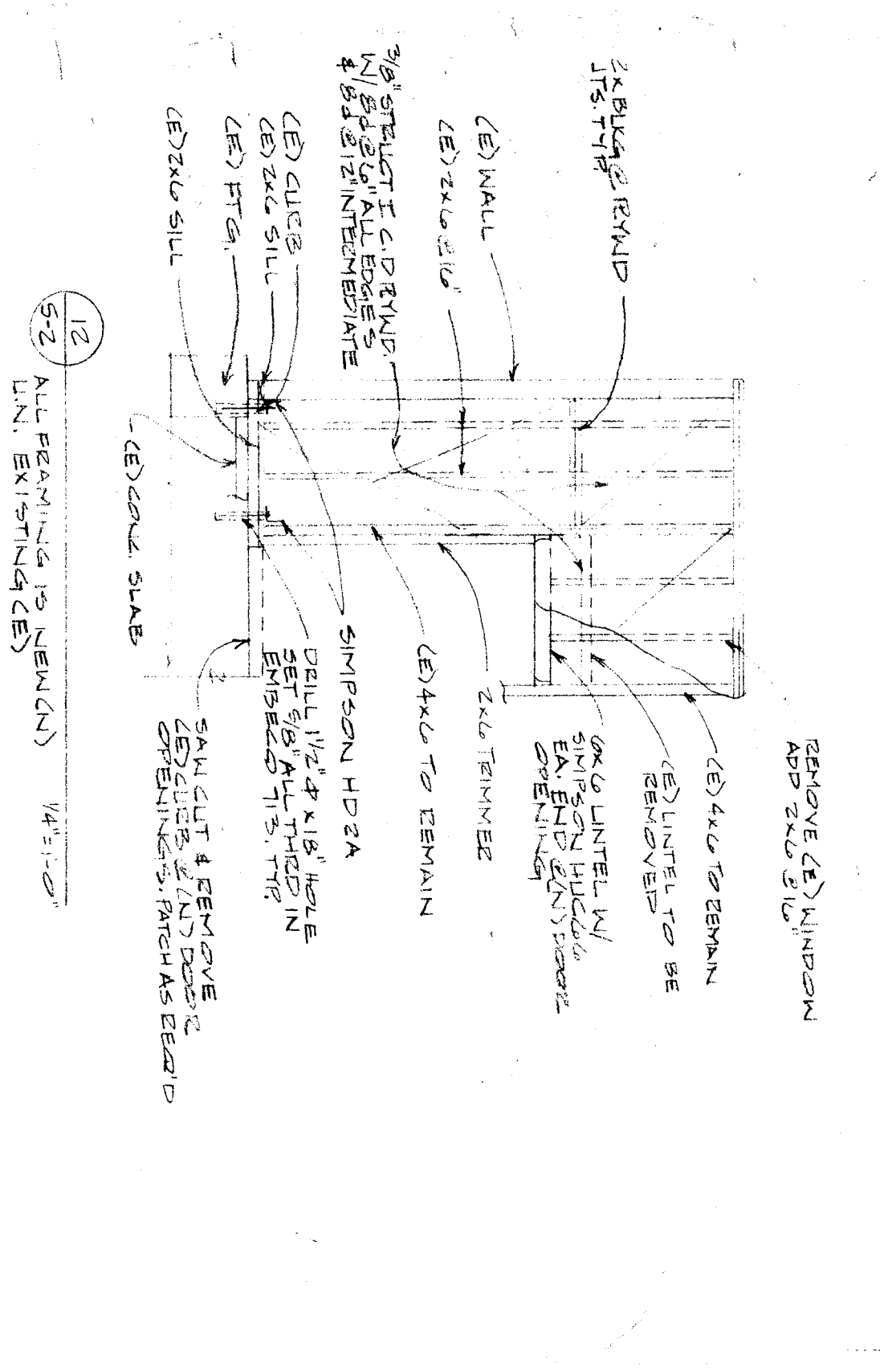
ELEVATION 3/4"=1'-0"



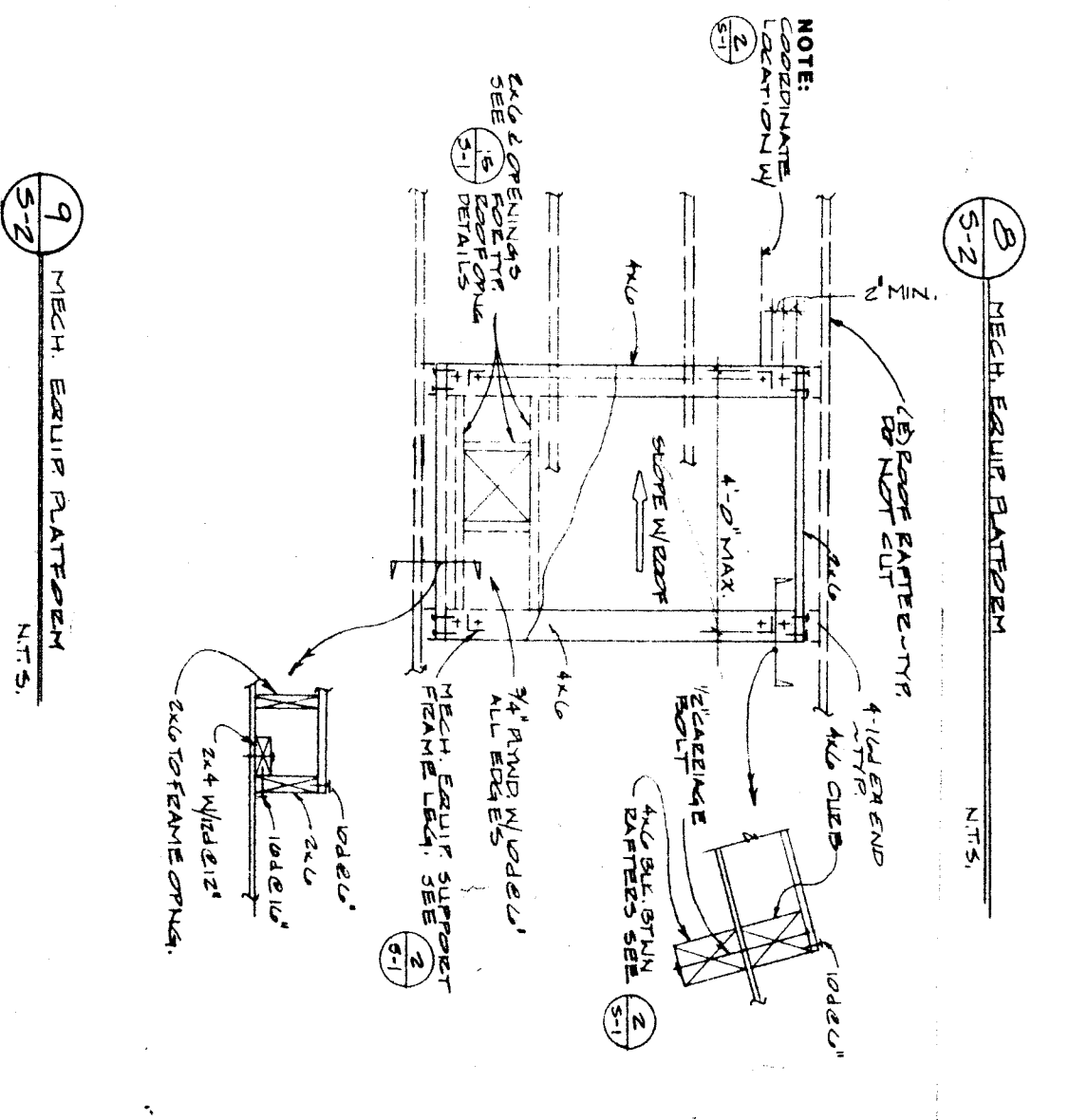
MECH. EQUIP. ANCHORAGE 1/2"=1'-0"



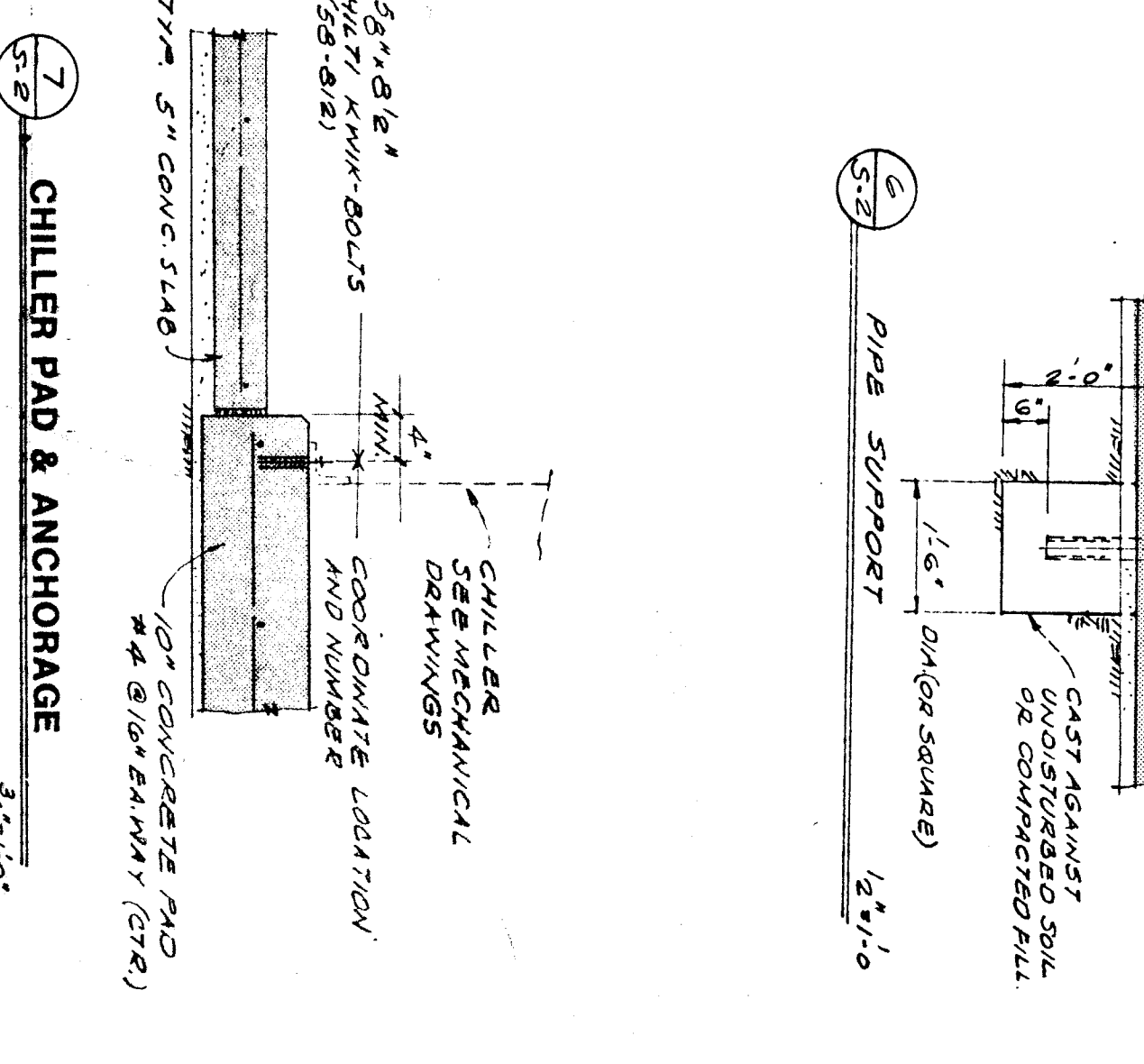
PARTIAL FOUNDATION AND FLOOR FRAMING PLAN BLDG. H. 1/8"=1'-0"



REAR VIEW (E) WINDOW ABOVE 5'-0\"/>



MECH. EQUIP. PLATFORM 1/2"=1'-0"



CHILLER PAD & ANCHORAGE 3/4"=1'-0"