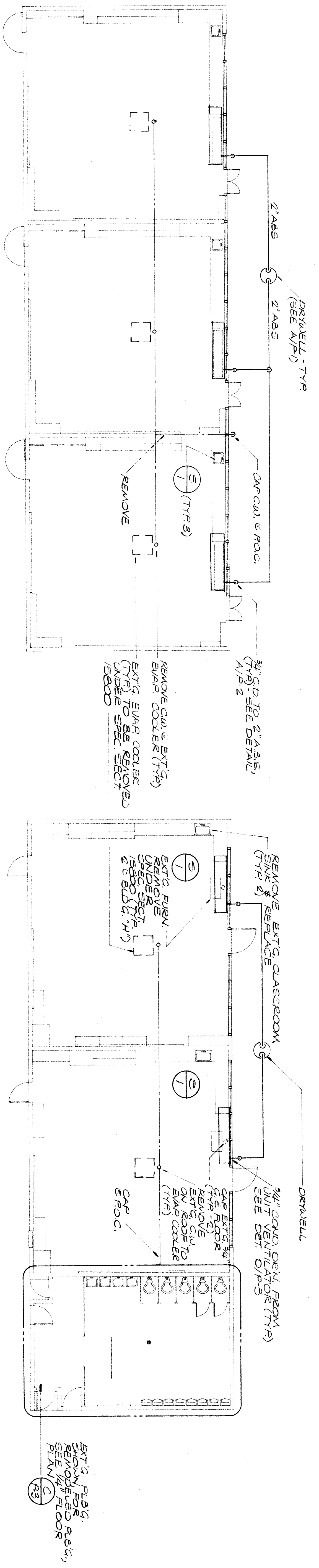


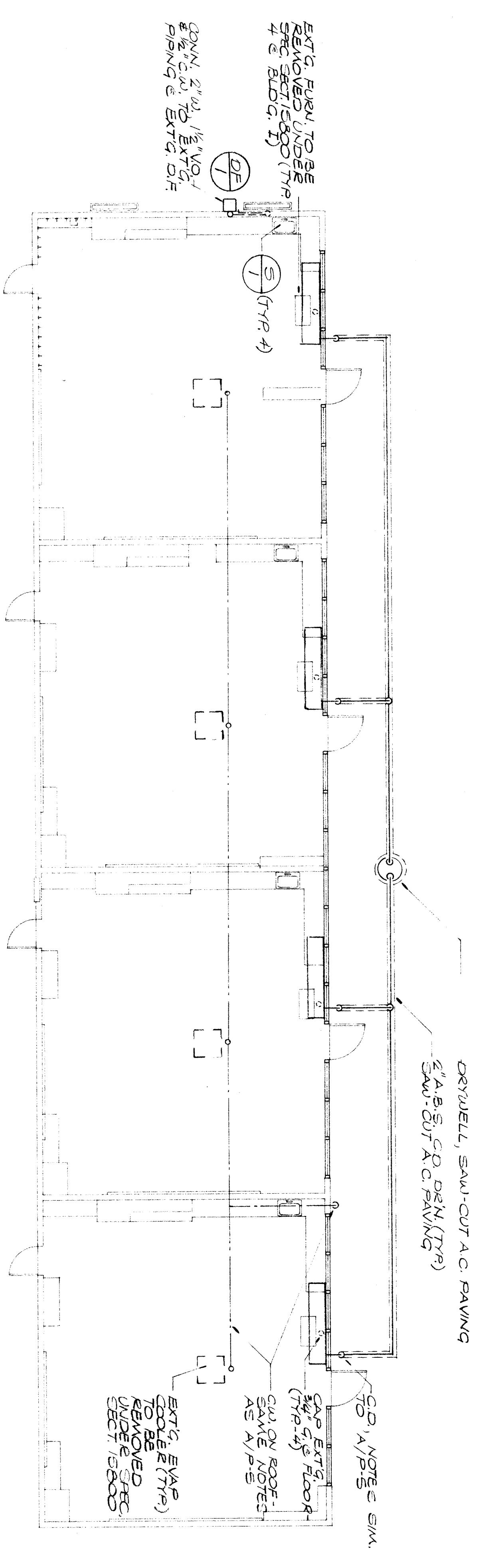
SEE ARCH. DWG'S FOR ADDITIONAL  
CORRECTIONS & DEMOLITION NOTES



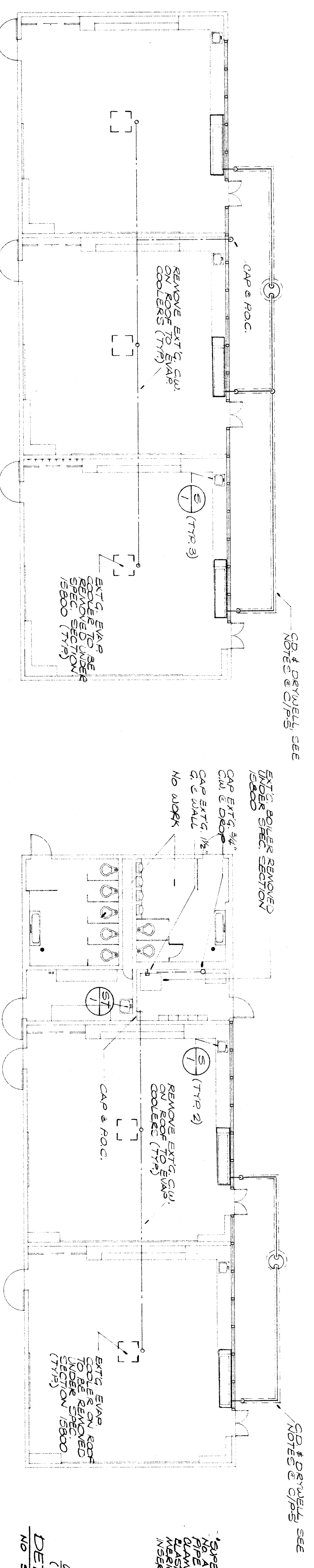
BUILDING G (PLUMBING FLOOR PLAN)  
SCALE: 1/8" = 1'-0"

BUILDING H (PLUMBING FLOOR PLAN)  
SCALE: 1/8" = 1'-0"

BUILDING J (PLUMBING FLOOR PLAN)  
SCALE: 1/8" = 1'-0"

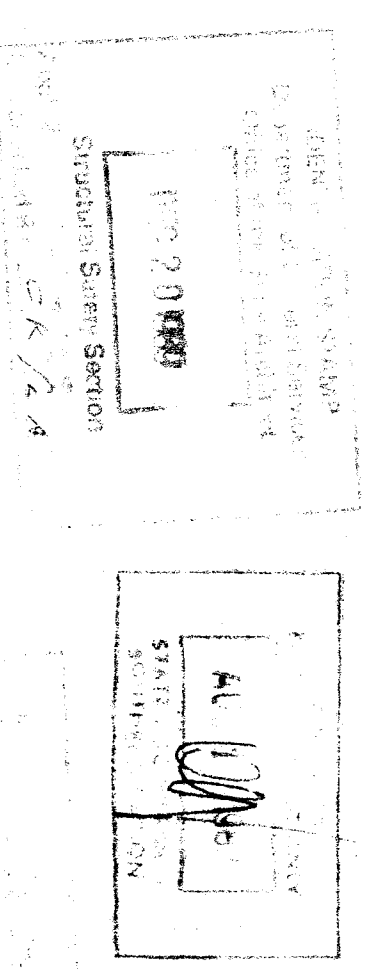
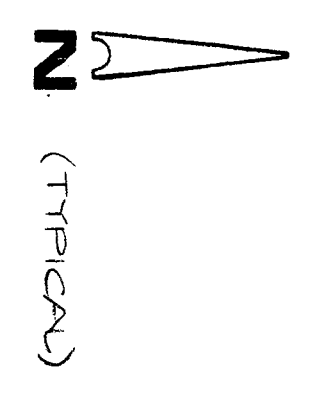
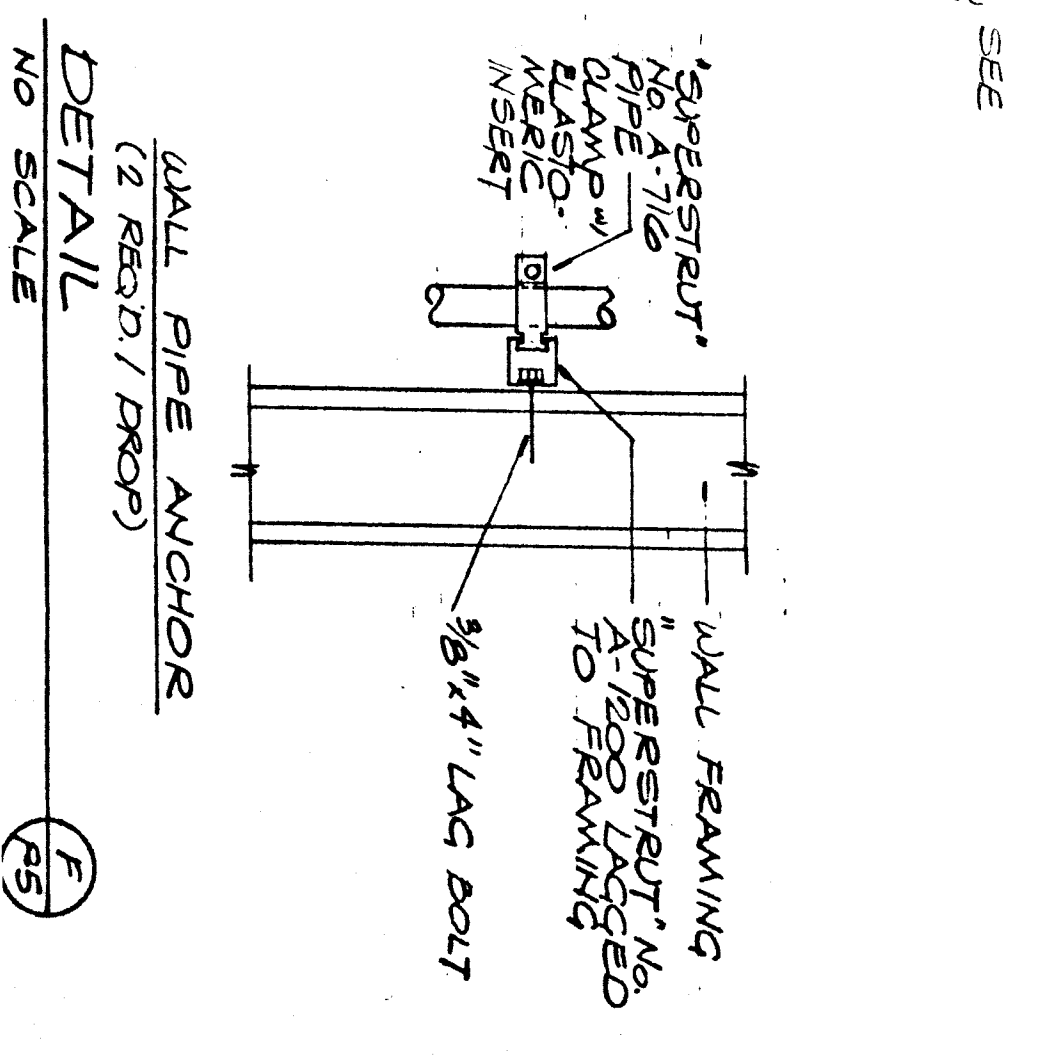


BUILDING I (PLUMBING FLOOR PLAN)  
SCALE: 1/8" = 1'-0"



BUILDING K (PLUMBING FLOOR PLAN)  
SCALE: 1/8" = 1'-0"

BUILDING L (PLUMBING FLOOR PLAN)  
SCALE: 1/8" = 1'-0"

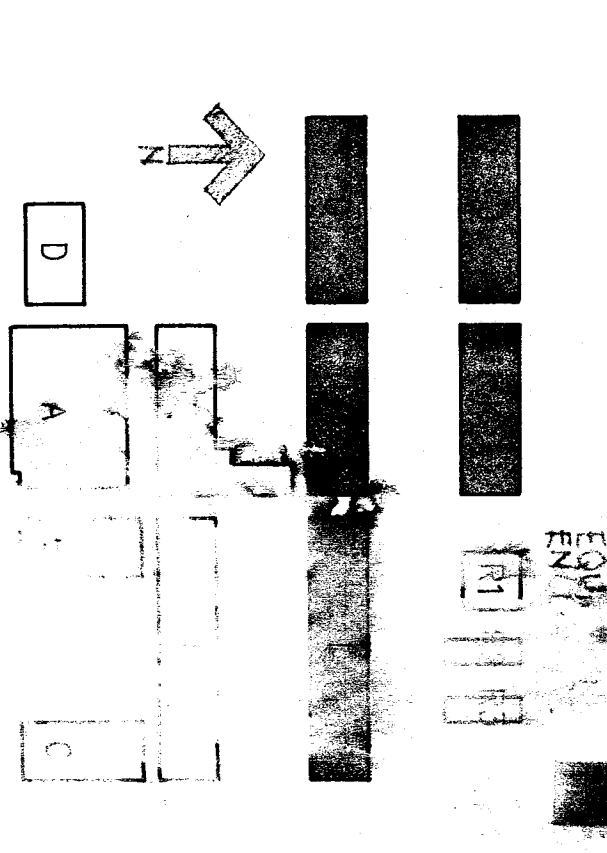


**RENPRO  
RUSSELL &  
ASSOCIATES**  
Architecture • Engineering • Interior Design/Space Planning

4400 Broadway, Suite 204, Berkeley, California 94704  
 Daniel W. Renfro, AIA  
 Mark E. Russell, AIA  
 CONSULTANTS  
 FRANK MITCHELL, REGISTERED ENGINEER  
 JOHN FRANK MITCHELL, INC.  
 CONSULTING MECHANICAL ENGINEERS  
 444 WEST 28TH STREET, SUITE 101  
 BERKELEY, CALIFORNIA 94711

**BAKERSFIELD  
CITY  
SCHOOL  
DISTRICT**  
  
**FRANKLIN  
ELEMENTARY  
SCHOOL  
MODERNIZATION**

THE ABOVE DRAWING AND SPECIFICATIONS AND DATA HEREON, AND ANY INSTRUMENTS REFERRED TO THEREIN, SHALL BE CONSIDERED TO BE THE ENTIRE CONTRACT. THE CONTRACTOR SHALL BE RESPONSIBLE FOR OBTAINING ALL NECESSARY PERMITS AND APPROVALS FROM THE CITY OF BAKERSFIELD AND THE CALIFORNIA DEPARTMENT OF INDUSTRIAL RELATIONS. THE CONTRACTOR SHALL BE RESPONSIBLE FOR OBTAINING ALL NECESSARY PERMITS AND APPROVALS FROM THE CALIFORNIA DEPARTMENT OF INDUSTRIAL RELATIONS. THE CONTRACTOR SHALL BE RESPONSIBLE FOR OBTAINING ALL NECESSARY PERMITS AND APPROVALS FROM THE CALIFORNIA DEPARTMENT OF INDUSTRIAL RELATIONS.



DATE	APPROVED	BY	FOR
1-3-11	ISSUED FOR		
1-3-11	REVISIONS		

SHEET TITLE  
**PLUMBING FLOOR PLANS  
 BLDGS. G & H, H.**

APPROVED ARCHITECT  
 CHECKED J.F.M.  
 DRAWN BY R.S.B.  
 SHEET NUMBER 86216/21996