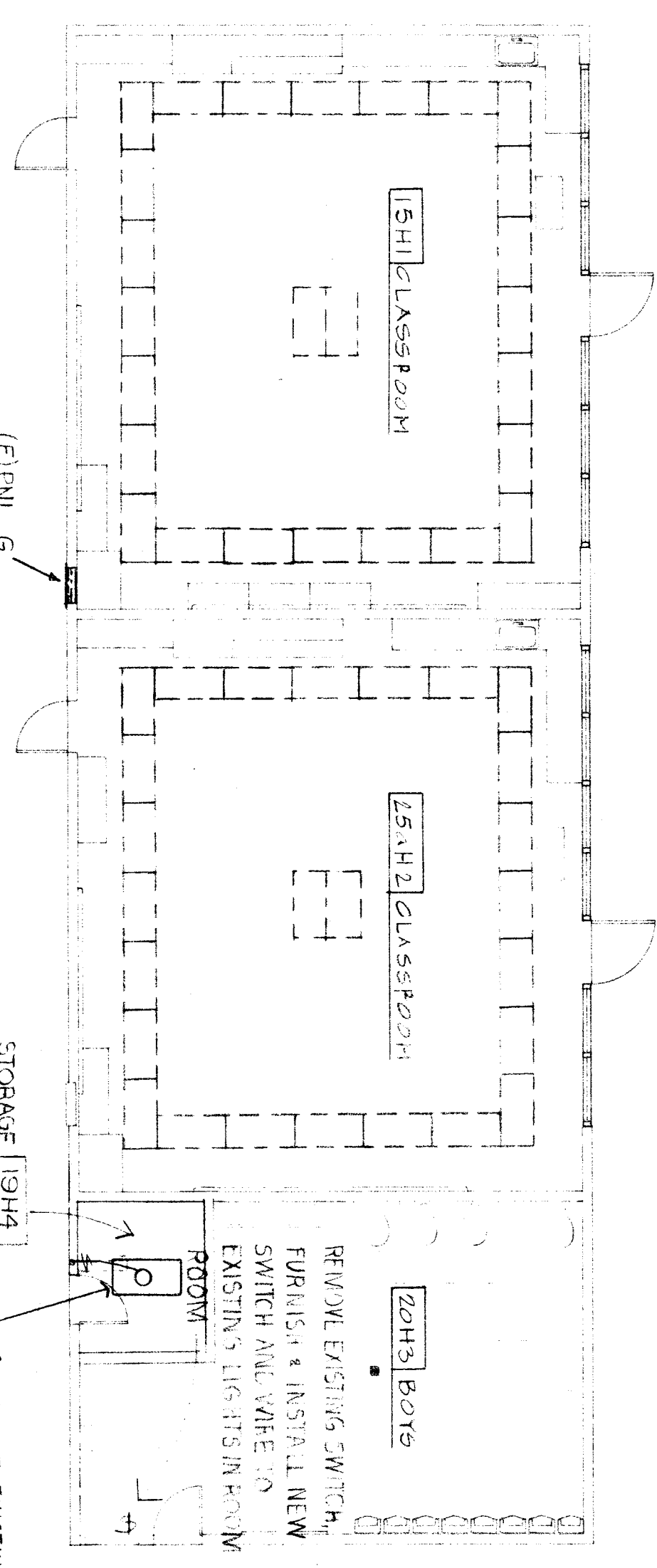


WEATHERSCOPE

ELECT. PANEL-LG		277/480V 3Ø 4W	TYPE F-INSULATED
CIRC. BREAKER NO. AMP POLE	REMARKS	WATT	
1 20	LIGHTING	A 3170	
2 20	SPACE LIGHTING	B 1580	
3 20	SPACE LIGHTING	C 1580	
4 20	SPACE LIGHTING		
5 20	SPACE LIGHTING		
6 20	SPACE LIGHTING		
7 20	SPACE LIGHTING		
8 20	SPACE LIGHTING		
9 20	SPACE LIGHTING		
10 20	SPACE LIGHTING		
11 20	SPACE LIGHTING		
12 20	SPACE LIGHTING		
TOTAL WATT:		3170	1580
TOTAL CONNECTED LOAD - 5KW			
MAINS: 50A/3P CIRC. BRK.			
FEEDER: 1/2" C-41/6 (CU THW)			

RELOCATE EXISTING LIGHT FIXTURE IN NEW LOCATION, WIRE TO EXISTING CIRCUIT, NEW SWITCH.

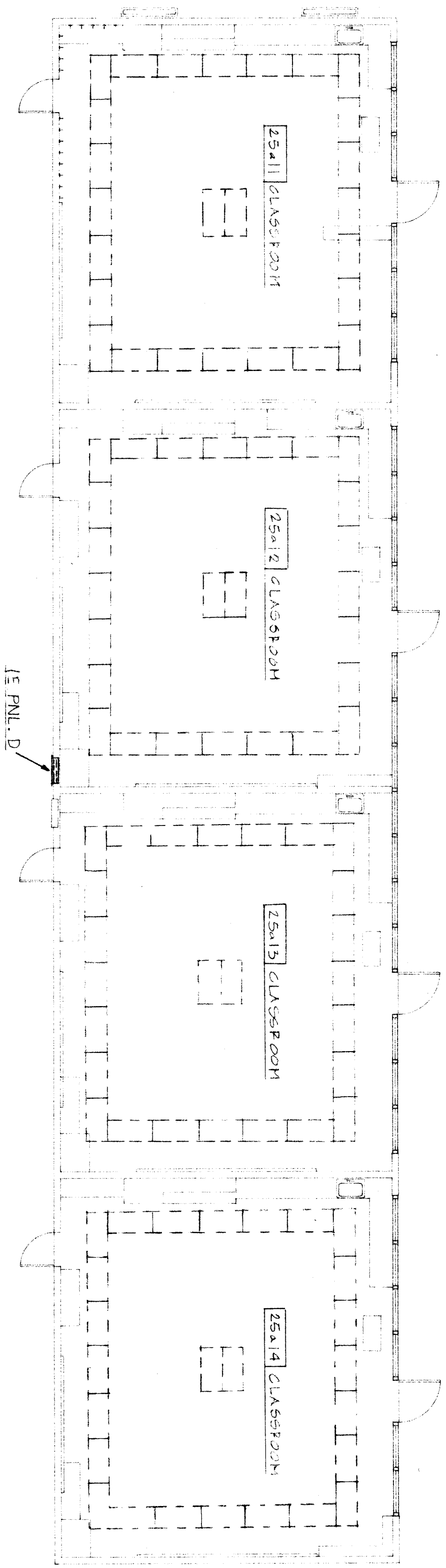


BUILDING G

WEATHERSCOPE

ELECT. PANEL-LK		277/480V 3Ø 4W	TYPE F-INSULATED
CIRC. BREAKER NO. AMP POLE	REMARKS	WATT	
1 20	SPACE LIGHTING	A 1580	
2 20	SPACE LIGHTING	B 3170	
3 20	SPACE LIGHTING	C 3170	
4 20	SPACE LIGHTING		
5 20	SPACE LIGHTING		
6 20	SPACE LIGHTING		
7 20	SPACE LIGHTING		
8 20	SPACE LIGHTING		
9 20	SPACE LIGHTING		
10 20	SPACE LIGHTING		
11 20	SPACE LIGHTING		
12 20	SPACE LIGHTING		
TOTAL WATT:		1580	3170
TOTAL CONNECTED LOAD - 8KW			
MAINS: 75A/3P CIRC. BRK.			
FEEDER: 1/2" C-41/2 (CU THW)			

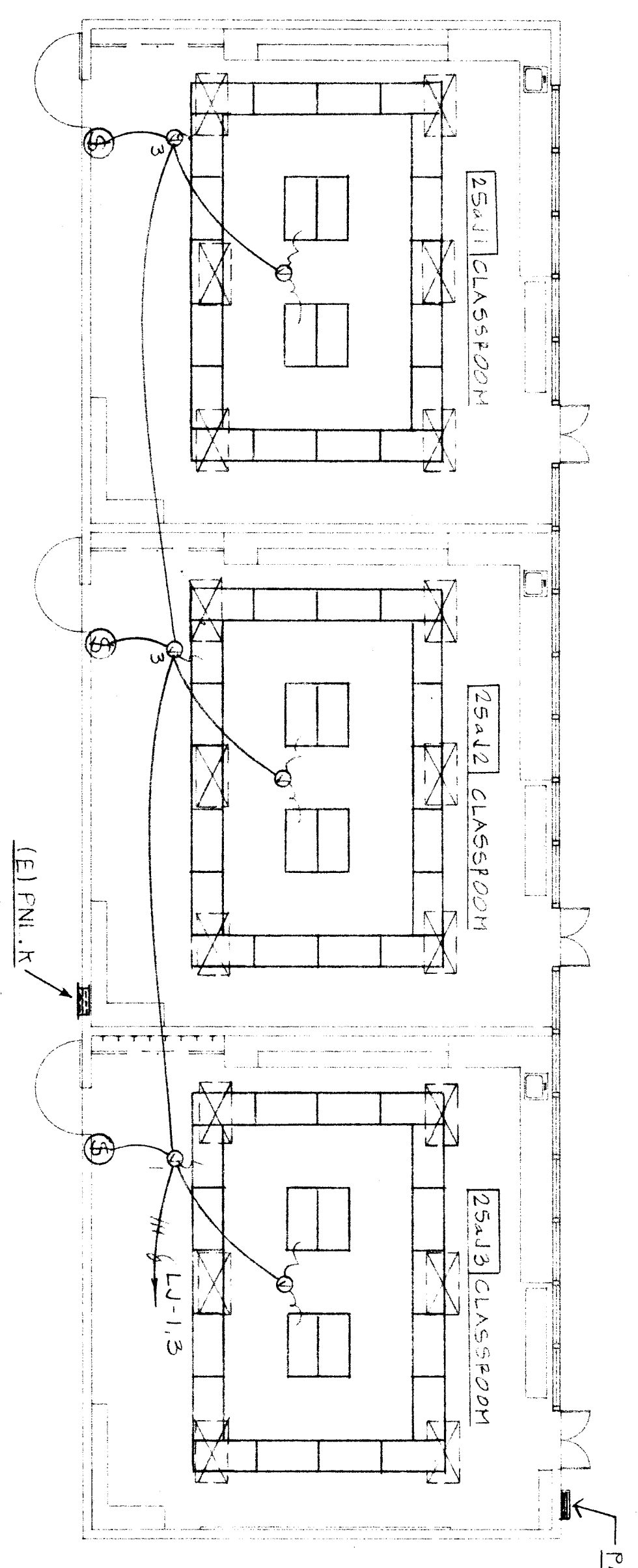
BUILDING H



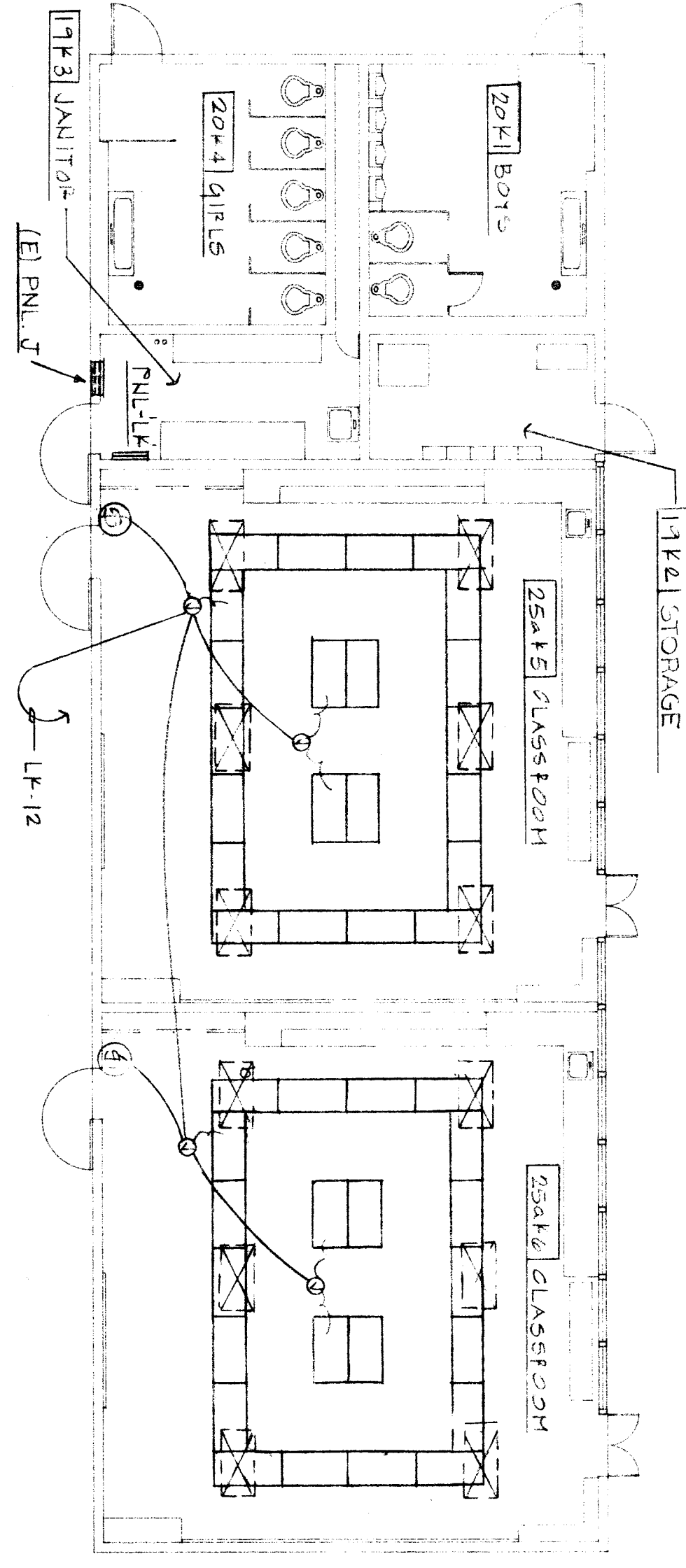
BUILDING I

WEATHERSCOPE

ELECT. PANEL-LJ		277/480V 3Ø 4W	TYPE F-INSULATED
CIRC. BREAKER NO. AMP POLE	REMARKS	WATT	
1 20	LIGHTING	A 1580	
2 20	SPACE LIGHTING	B 3170	
3 20	SPACE LIGHTING	C 3170	
4 20	SPACE LIGHTING		
5 20	SPACE LIGHTING		
6 20	SPACE LIGHTING		
7 20	SPACE LIGHTING		
8 20	SPACE LIGHTING		
9 20	SPACE LIGHTING		
10 20	SPACE LIGHTING		
11 20	SPACE LIGHTING		
12 20	SPACE LIGHTING		
TOTAL WATT:		1580	3170
TOTAL CONNECTED LOAD - 5KW			
MAINS: 50A/3P CIRC. BRK.			
FEEDER: 1/2" C-41/8 (CU THW)			



BUILDING J



BUILDING K

NOTE
 SEE SHEET E-2 FOR LIGHT FIXTURE TYPE.