

SYMBOLS:-

- CEILING LIGHTING OUTLET, FIXTURE NO., WATTAGE, CIRCUIT NO. & CONTROLLING SWITCH LETTER SHOWN.
- BRACKET LIGHTING OUTLET.
- FLUSH SQUARE CEILING FIXTURE & J-BOX.
- BULLSEYE PILOT LIGHT, CONTROLLED FROM SWITCH INSIDE REFRIGERATOR ROOM.
- DUPLEX RECEPTACLE 1/2" UNLESS NOTED. W.P. = WEATHERPROOF.
- DUPLEX RECEPTACLE ON FLOOR STAND. SEE SPECS.
- JUNCTION BOX, STANDARD OUTLET BOX & BLANK PLATE UNLESS NOTED.
- MOTOR OUTLET, AS DESCRIBED ON DRAWINGS.
- MOTOR DISCONNECT 1/2HP & LESS (TRUMBULL TT)
- MOTOR DISCONNECT 1/2HP & MORE (TRUMBULL PT)
- PUSHBUTTON, FOR MOTOR STARTER.
- HAND-OFF-AUTO SWITCH OUTLET, 4" SQUARE BOX WITH PLATE AS REQUIRED BY H&V. CONT.
- PUBLIC TELEPHONE OUTLET, 4" SQUARE BOX & PLATE WITH SINGLE BUSHED OPENING.
- SECONDARY CLOCK OUTLET.
- FIRE ALARM BREAK GLASS STATION 4-6"
- BELL, 6" UNLESS NOTED OTHERWISE.
- SINGLE POLE WALL SWITCH 4-6"
- SINGLE POLE WALL SWITCH WITH SUBSCRIPT 4-6"
- THREE WAY WALL SWITCH.
- SINGLE POLE WALL SWITCH WITH PILOT LIGHT.
- SINGLE POLE WALL SWITCH KEY OPERATED.

- LIGHTING PANELBOARD.
- SIGNAL & FIRE ALARM TERMINAL.

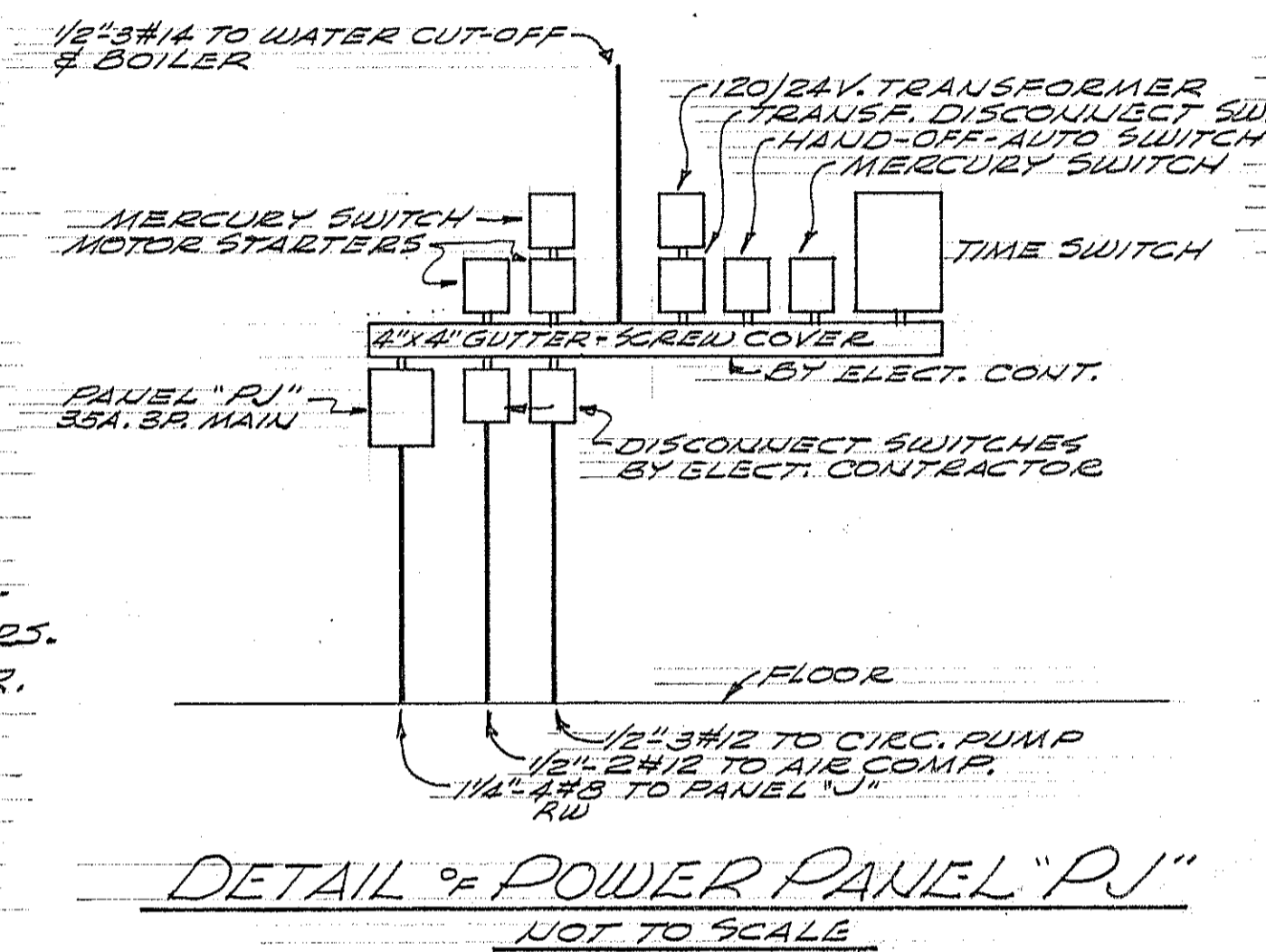
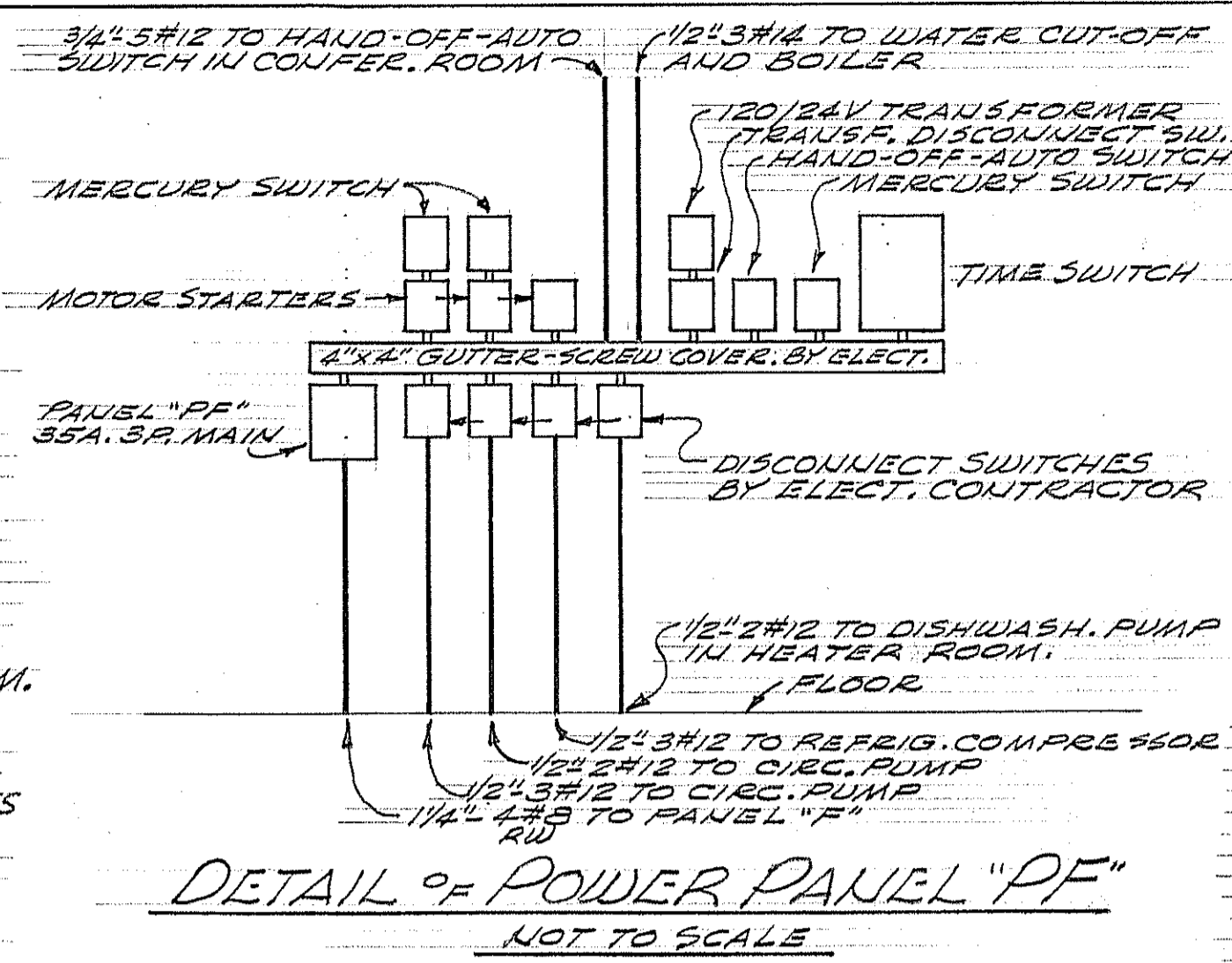
- CONDUIT RUN CONCEALED IN WALLS OR CEILING.
- C.O. = CONDUIT ONLY WITH PULL WIRE.
- CONDUIT RUN CONCEALED UNDER FLOOR, UNDERGROUND OR IN TUNNEL.
- HOMERUN TO CIRCUITS #1-3-5 ON PANEL "F". ALL WIRE SHALL BE #12 UNLESS NOTED OTHERWISE. ALL CONDUIT SHALL CONFORM TO N.E. CODE SIZE UNLESS MARKED LARGER.

FIXTURES:-

- F#1 CONCENTRIC RING INDIRECT FIXTURE WITH SWIVEL HANGER CAUPOY, STEM & 500 WATT SILVER BOWL LAMP. SMOOT-HOLMAN CO. #CX-500-S. ALTER STEM SO THAT FIXTURE LENGTH IS 42" O.A.
- F#2 CONCENTRIC RING INDIRECT FIXTURE WITH SWIVEL HANGER CAUPOY, STEM & 750 WATT SILVER BOWL LAMP. SMOOT-HOLMAN CO. #CX-1000-S. ALTER STEM SO THAT FIXTURE LENGTH IS 42" O.A.
- F#3 FLUSH SQUARE CEILING FIXTURE WITH CORNING PRISMATIC DROP LENS, ATTACHED J-BOX AND 200 OR 300 WATT LAMP AS INDICATED. WAGNER-WOODRUFF CO. #50153/55. STAINLESS STEEL FINISH TRIM.
- F#4 FLUSH SQUARE CEILING FIXTURE WITH CORNING PRISMATIC DROP LENS, ATTACHED J-BOX AND 100 WATT LAMP. WAGNER-WOODRUFF CO. #30153/55 WITH STAINLESS STEEL FINISH TRIM.
- F#5 DRUM SHAPED GLASS FIXTURE WITH 2-50 OR 2-75 WATT LAMPS AS INDICATED. SMOOT-HOLMAN CO. #LH-1110.
- F#6 PORCELAIN KEYLESS RECEPTACLE WITH WATTAGE AS INDICATED. ALABAX #3141.
- F#7 VAPORTIGHT ENCLOSING GLOBE FIXTURE WITH GLOBE AND CAST SCREW GUARD AND 150 WATT LAMP. CROUSE-HINDS CO. #V12009, VC12009 OR VL12009 AS REQUIRED FOR COND. ENTRANCE.
- F#8 VAPORTIGHT ENCLOSING GLOBE FIXTURE, BRACKET TYPE, WITH GLOBE, CAST GUARD & 100 WATT LAMP. CROUSE-HINDS #VGR 216.
- F#9 VAPORTIGHT FIXTURE WITH CROUSE-HINDS #V63 GLASS AND GASKET, ARB-40 ADAPTER, SERIES GUF CONDULET & 100 WATT LAMP.

SWITCHBOARD NOTES:-

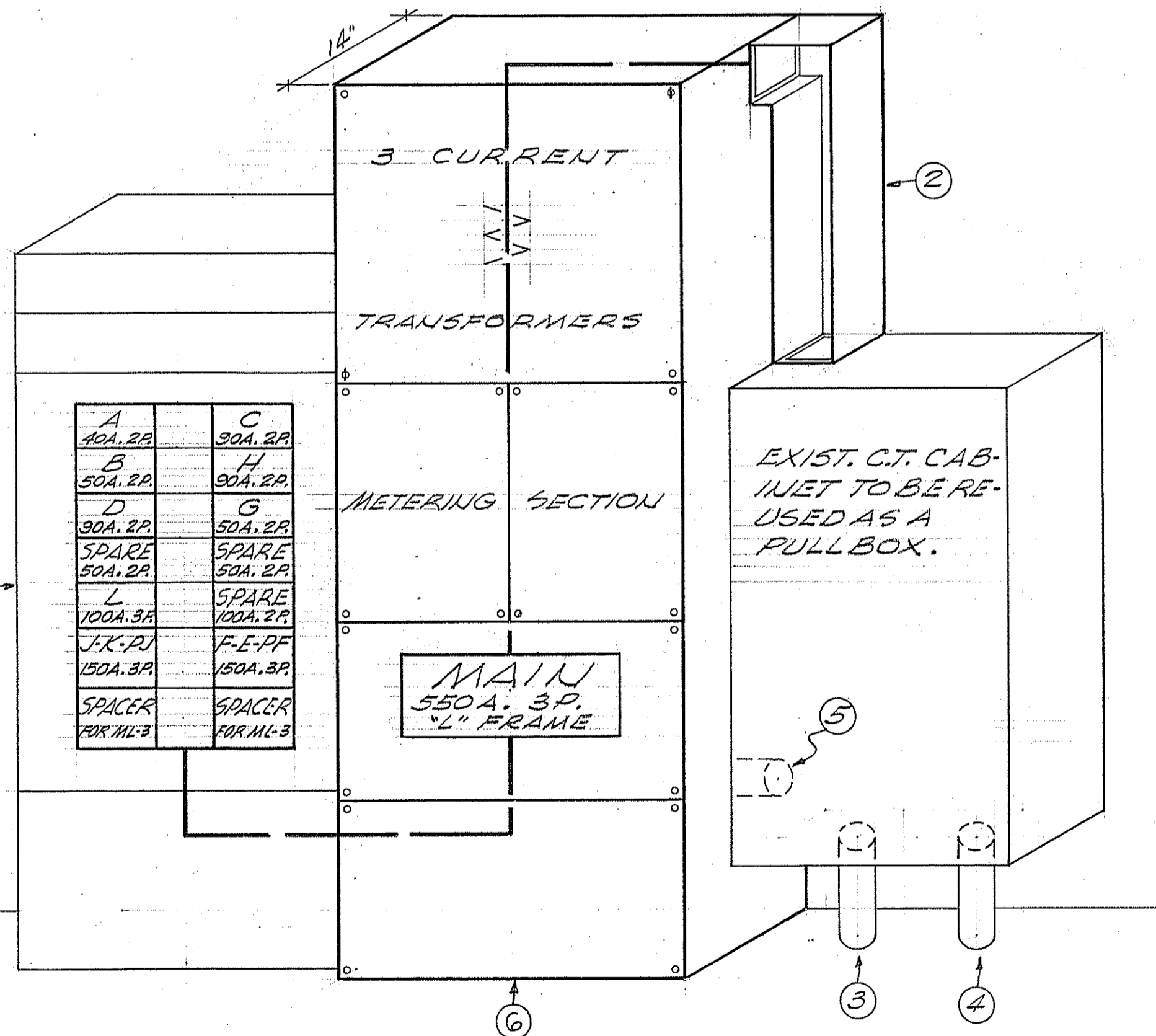
- ① EXIST. MAIN SWITCHBOARD CABINET. REMOVE BREAKERS & BUSING & INSTALL NEW 3φ BUSING & BREAKERS.
- ② NEW 6"x6" GUTTER WITH SEALABLE SCREW COVER.
- ③ EXIST. FEEDER 3"-3-500 MCM. REMOVE EXIST. CABLES & SALVAGE. INSTALL NEW 3-350 MCM-RW & 1#4/6 TW.
- ④ EXIST. 3" C.O. INSTALL NEW 3-350 MCM-RW & 1#4/6 TW.
- ⑤ EXISTING CONDUIT & WIRE TO BE REMOVED.
- ⑥ NEW SERVICE SECTION.



NOTES:- FOR SITE PLAN.

- ① 2-3#2 RW & 1#2 TW.
- ② 1/4"-1#1/4 SIGNAL & FIRE ALARM.
- ③ 2 1/2"-3#3/8 RW & 1#1 TW.
- ④ 3/4"-3#4/8 RW & 1#3/8 TW.
- ⑤ 1" 10#14 SIGNAL & 3/4" 4#1/4 FIRE ALARM.
- ⑥ UNDERGROUND PULL BOX FLUSH IN SIDEWALK. 3'-0" x 3'-0" x 2'-0" WITH WATERTIGHT CAST IRON COVER & FRAME. CONSTRUCT BOX OF 6" REINFORCED CONCRETE WALLS & BOTTOM.
- ⑦ PICK UP 3/4" SIGNAL & FIRE ALARM STUBS AT END OF EXIST. TUNNEL & EXTEND AS INDICATED 5'-0" BEYOND EDGE OF NEW WALK.
- ⑧ 2" C.O. STUB FOR FUTURE FROM PULL BOX. +5'-0"
- ⑨ EXISTING FIRE ALARM J-BOX IN TUNNEL. CONNECT NEW CONDUIT & WIRES.
- ⑩ NEW 8"x8"x3" SIGNAL J-BOX IN TUNNEL WITH TERMINALS.
- ⑪ EXISTING SERVICE CONDUIT & NEW CABLES. SEE SWBD.
- ⑫ EXISTING DISTRIBUTION SWBD. CUT THRU SLAB & OVER INTO TUNNEL TO INSTALL NEW FEEDERS & STUBS.
- ⑬ 3"-3#4/8 RW & 1#3/8 TW, 2 1/2"-3#3/8 RW & 1#3/8 TW AND 2" C.O. 1" C.O. STUB FOR FUTURE +5'-0" BEYOND WALK.
- ⑭ 2 1/2"-3#3/8 RW & 1#3/8 TW.
- ⑮ 2-3#2 RW & 1#4 TW.
- ⑯ EXISTING SERVICE POLE. SEE SPECS FOR MATERIALS & INSTALLATION.
- ⑰ 18"x18"x3" PULL BOX WITH SCREW COVER IN TUNNEL.
- ⑱ SIGNAL J-BOX. SEE 1/4" SCALE PLAN SHEET #E-3.
- ⑲ 1/4" C.O. FOR FUTURE 5'-0" FROM BUILDING.

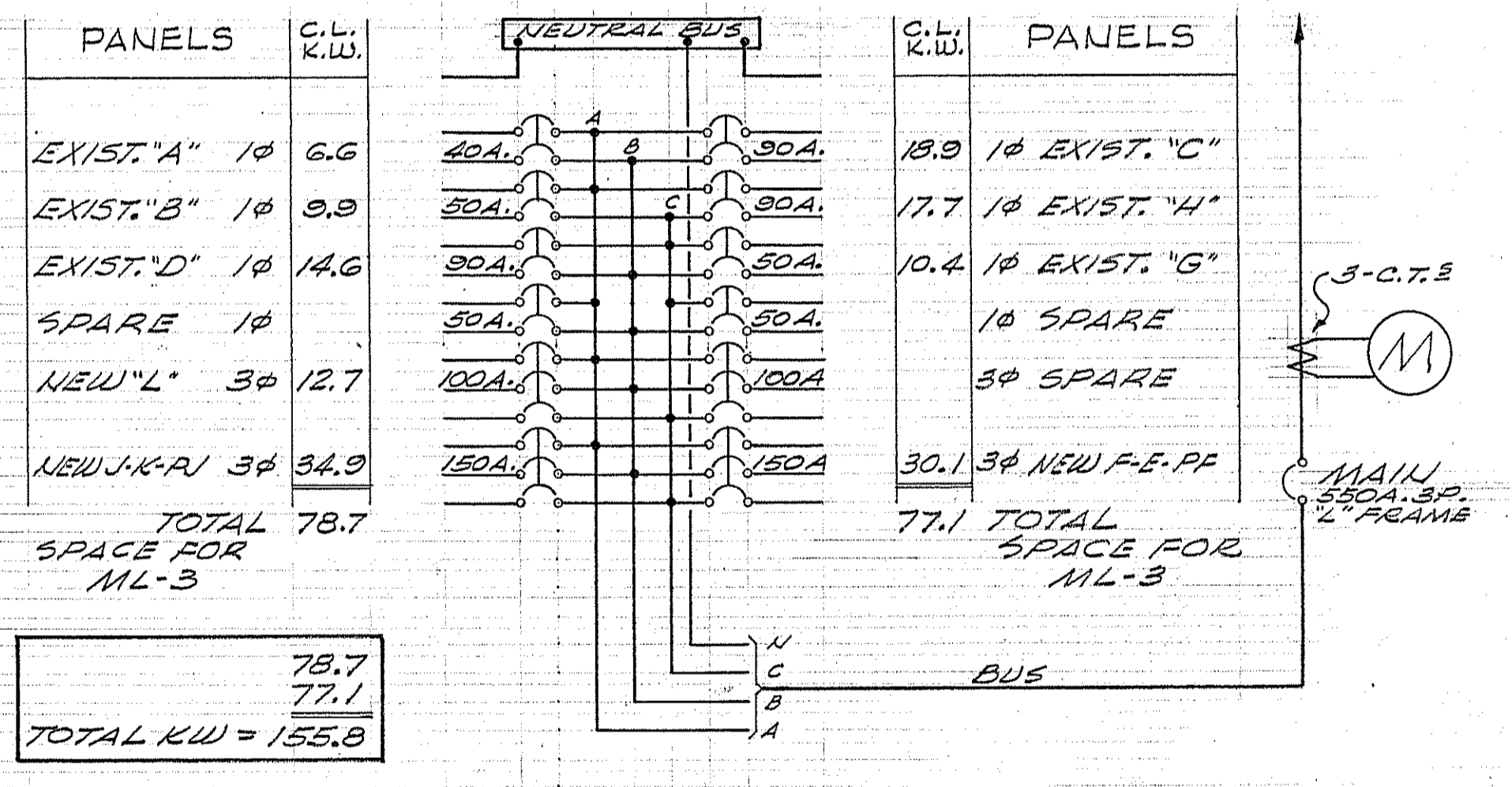
NOTE:
SEAL ALL OPENINGS WHERE CONDUITS ENTER THRU FOOTINGS OF BUILDING OR TUNNEL WALLS.



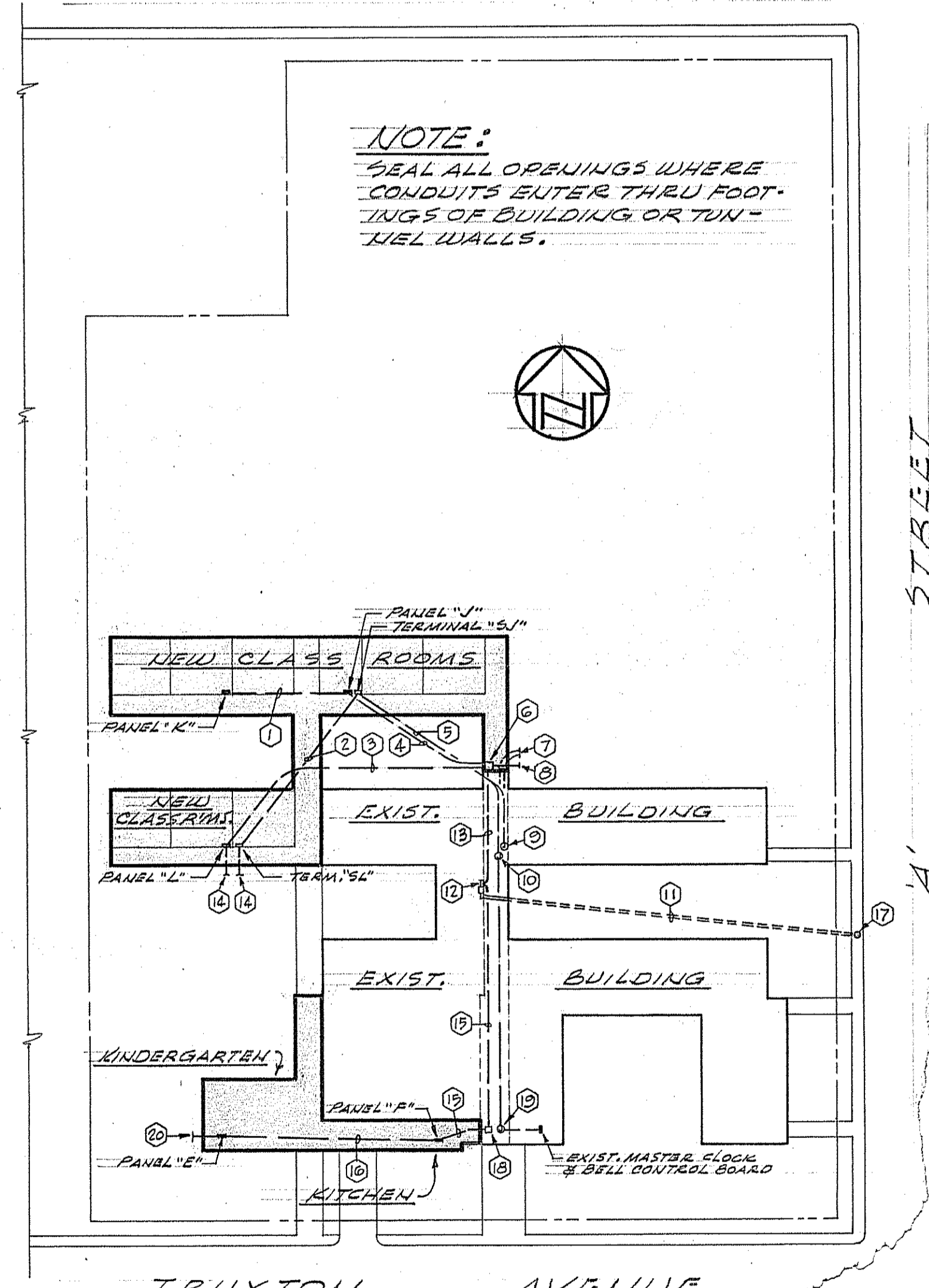
MAIN SWITCHBOARD
SCALE 1"=1'-0"

SERVICE CONDUIT CALCULATIONS

AREA OF 3" CONDUIT	= 7.380 SQ. IN.
USE PERMITTED 40%	= 2.95 SQ. IN.
AREA OF 350 MCM, RW = .7620	
3 x .7620	= 2.286 SQ. IN.
AREA OF 4/6 TW	= .3904 SQ. IN.
TOTAL	= 2.6764 SQ. IN.



MAIN SWITCHBOARD BUSING DIAGRAM
NOT TO SCALE



SITE PLAN
SCALE 1"=60'-0"

NOTE: CONTRACTOR IS TO VERIFY ALL DIMENSIONS ON THE WORK. THIS DRAWING IS THE PROPERTY OF THE ARCHITECT AND MUST BE RETURNED ON COMPLETION OF THE CONTRACT.

ALBERT E BYLER
ELECTRICAL ENGINEER
3704 WEST THIRD STREET
LOS ANGELES 5, CALIFORNIA
DUNKIRK 7-8828
Albert E Byler

DIVISION OF SCHOOL HOUSE PLANNING

STATE OF CALIFORNIA - DEPARTMENT OF PUBLIC WORKS
DIVISION OF ARCHITECTURE
APPROVED NOV 6 - 1953
11380 *Danny M. Bell*
BY ARCHITECTURAL ENGINEER

COUNTY SUPERINTENDENT OF SCHOOLS

BOARD OF TRUSTEES
FINAL APPROVAL
John J. ...
Virginia C. Bellinger

FRANKLIN SCHOOL ADDITION
BAKERSFIELD - CITY SCHOOL DISTRICT
BAKERSFIELD - CALIFORNIA

C. B. ALFORD • ARCHITECT • W. J. THOMAS
602 HABERFELDE BUILDING - PHONE 2-1302
BAKERSFIELD - CALIFORNIA