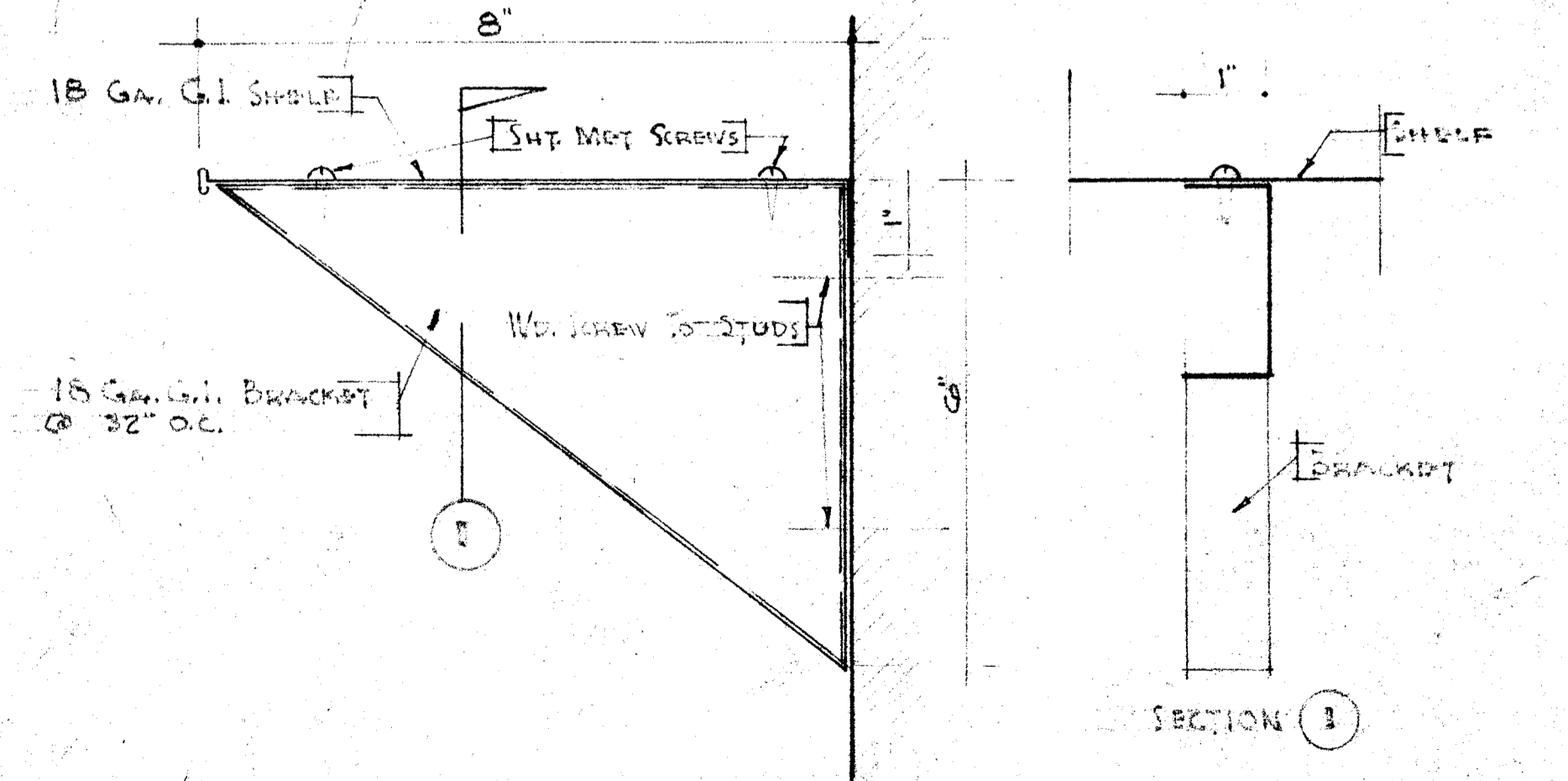
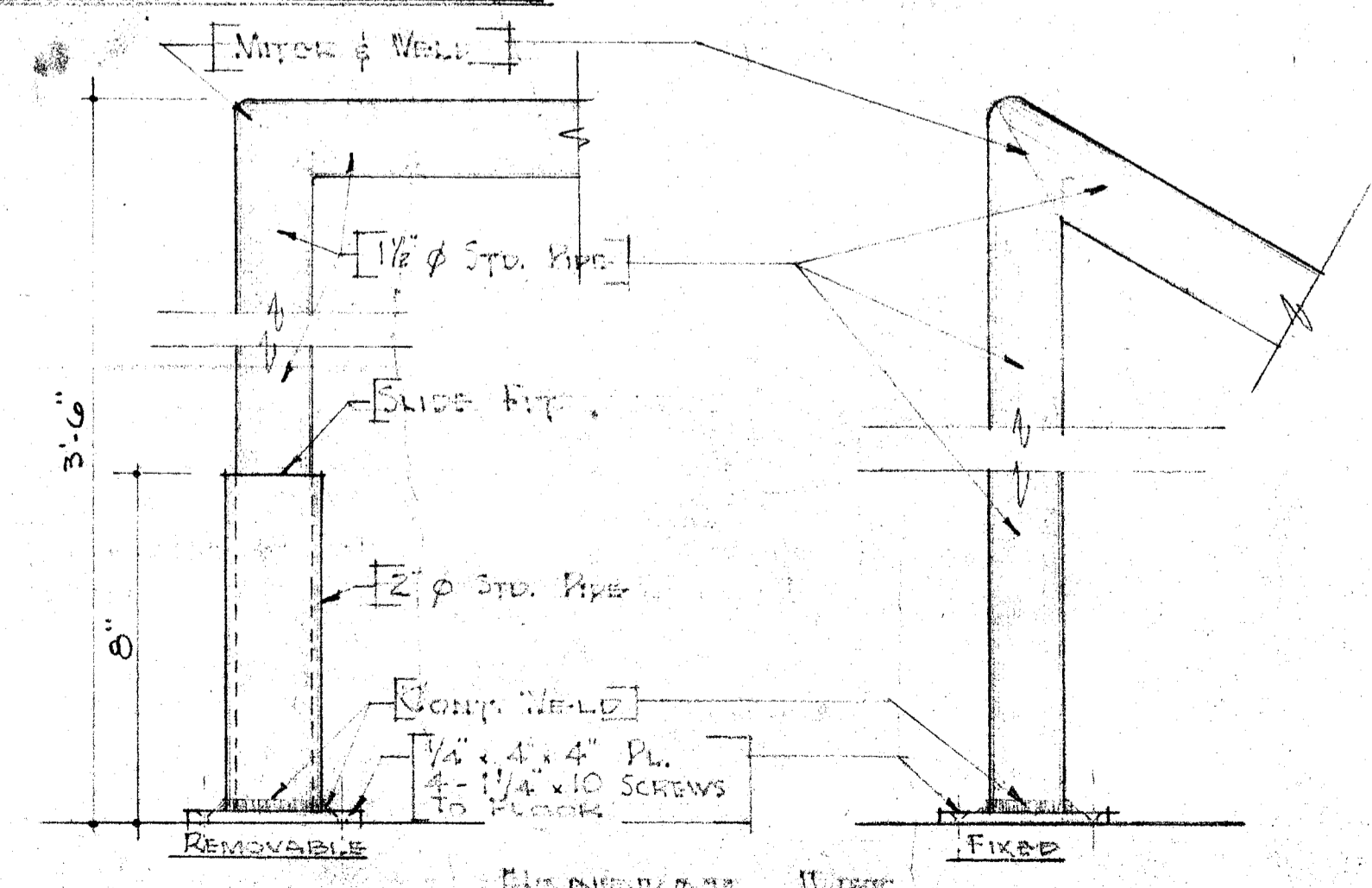
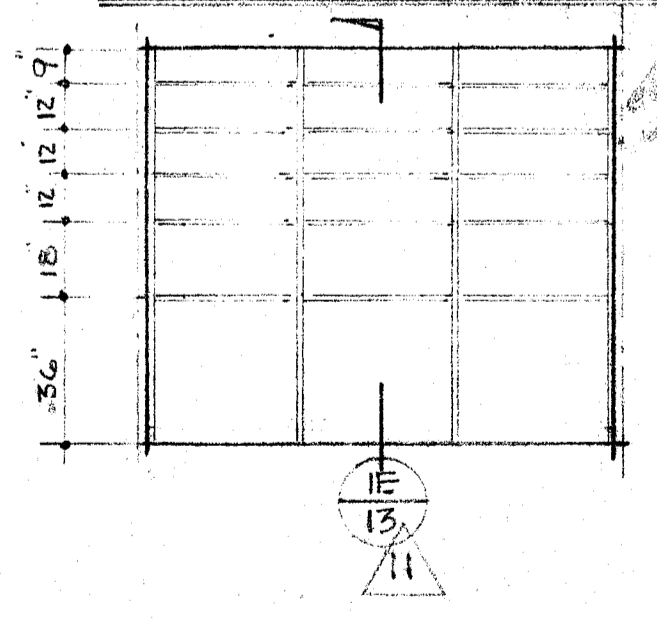
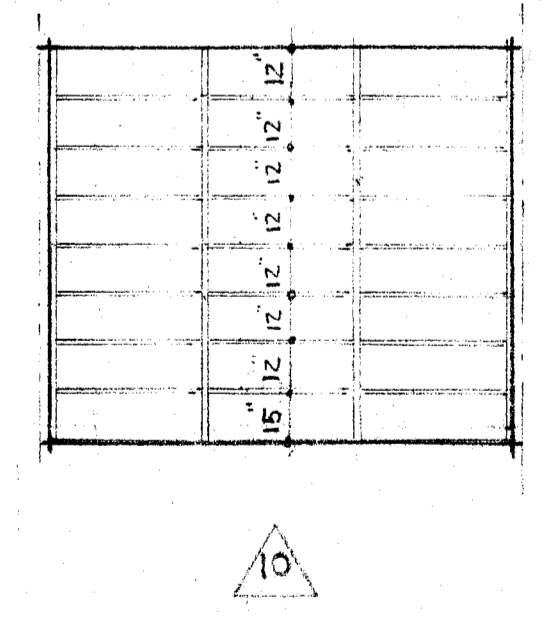
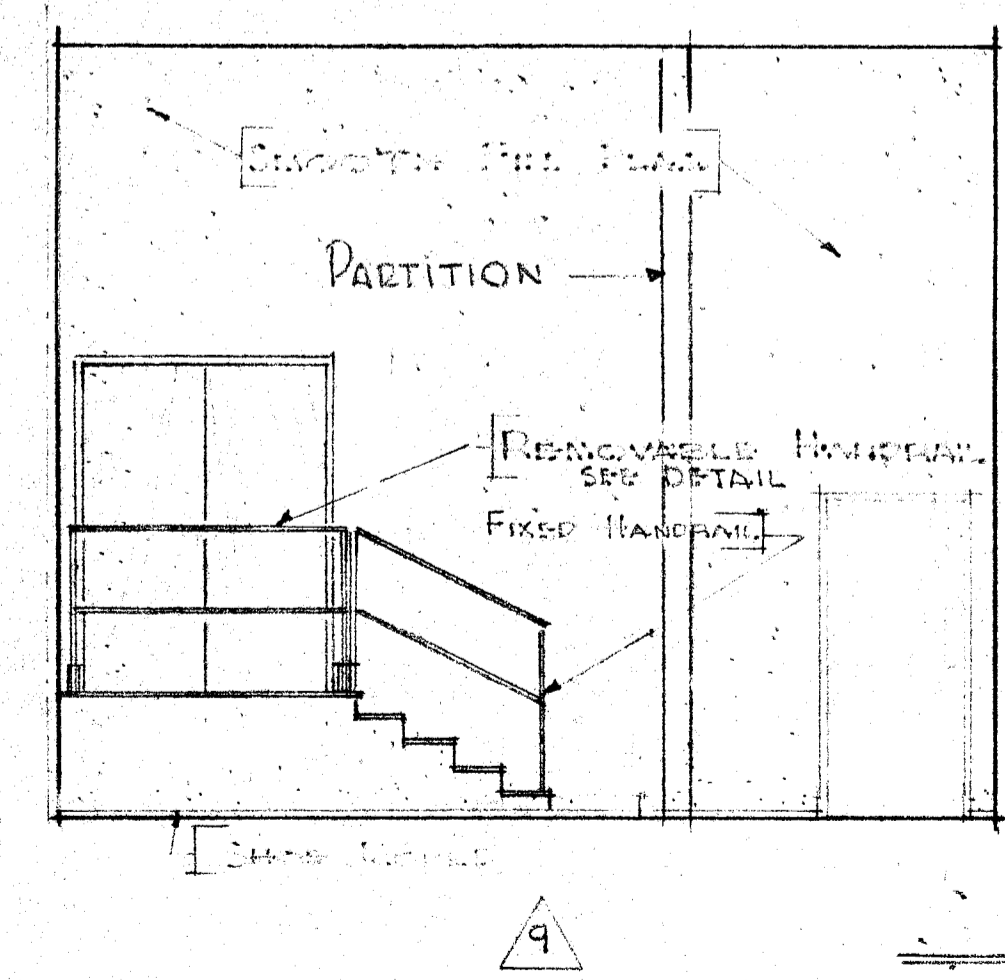
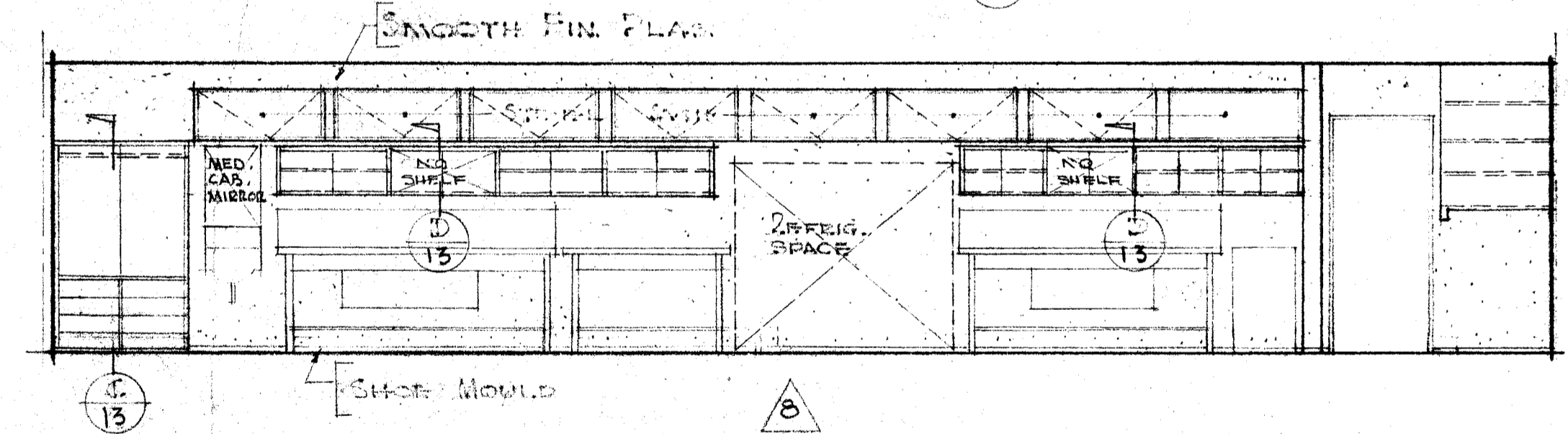
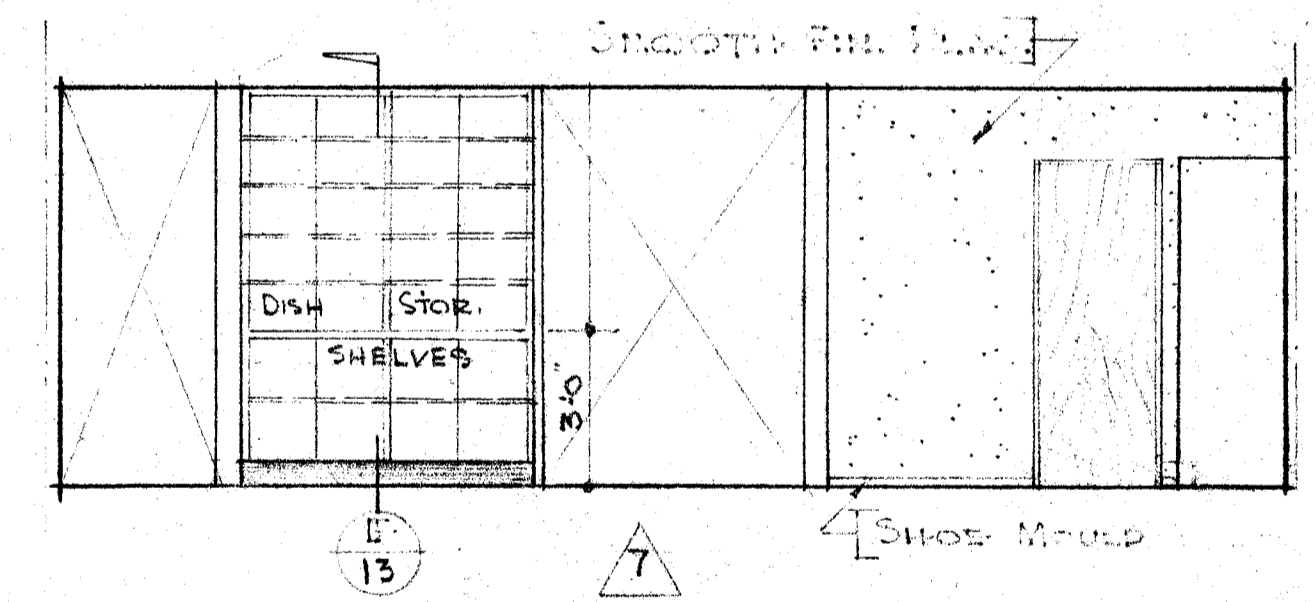
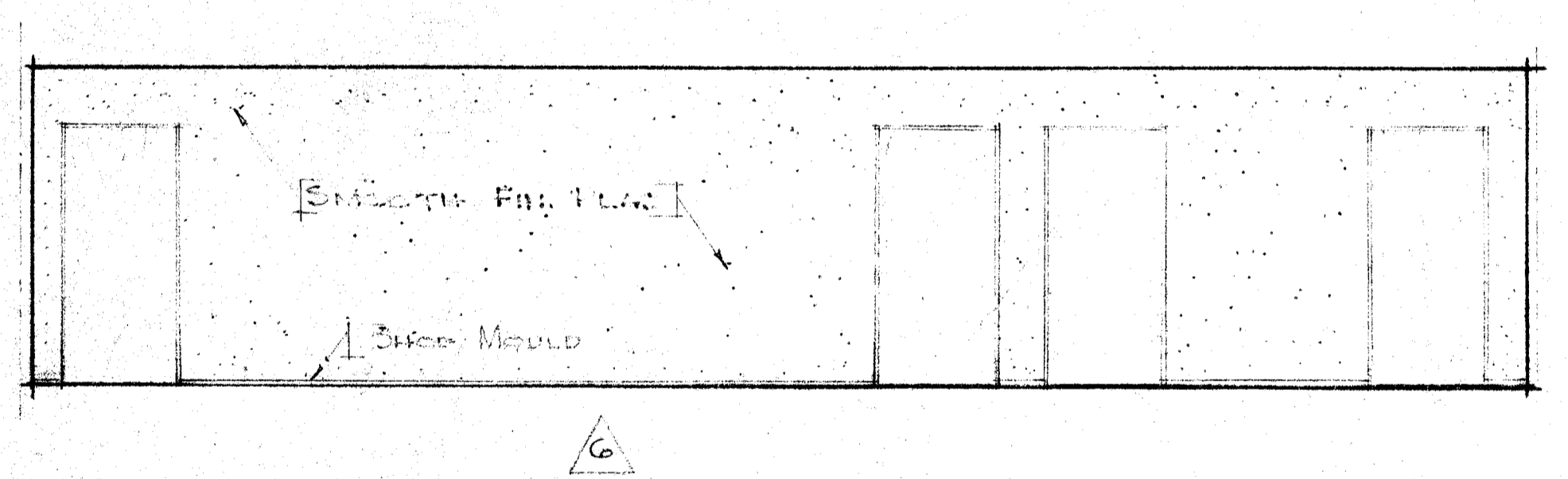
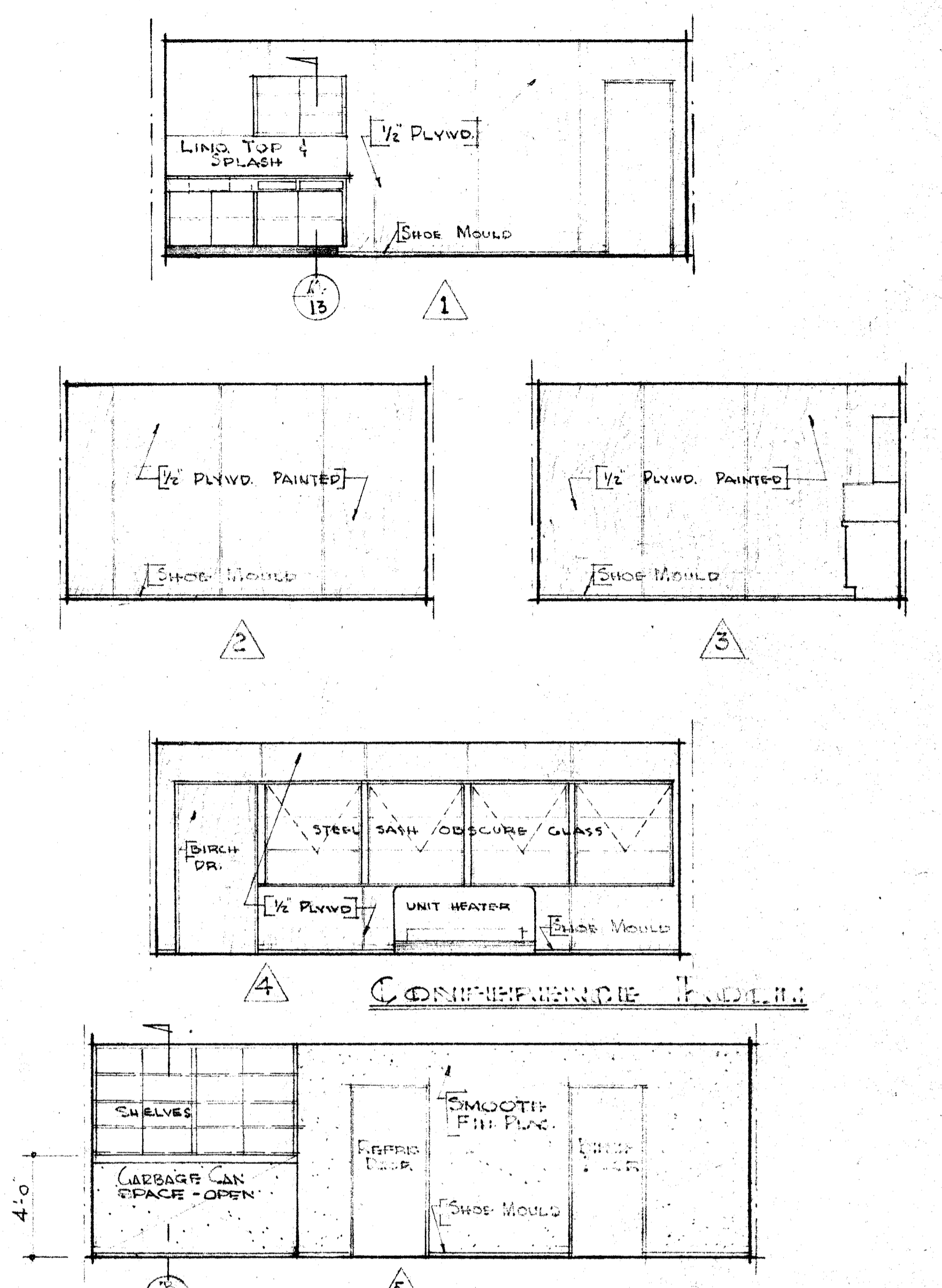


KITCHEN & STORAGE PLAN SCALE 1/4" = 1'-0"



NOTE: CONTRACTOR IS TO VERIFY ALL DIMENSIONS ON THE WORK. THIS DRAWING IS THE PROPERTY OF THE ARCHITECT AND MUST BE RETURNED ON COMPLETION OF THE CONTRACT.

DIVISION OF SCHOOL HOUSE PLANNING

STATE OF CALIFORNIA - DEPARTMENT OF PUBLIC WORKS
 DIVISION OF ARCHITECTURE
 APPROVED NOV 6 - 1953
 11380
Harry W. Clark
 ARCHITECT

COUNTY SUPERINTENDENT OF SCHOOLS

BOARD OF TRUSTEES
 FINAL APPROVAL
W. J. Thomas
 W. J. Thomas
 ARCHITECT

FRANKLIN SCHOOL ADDITION
 BAKERSFIELD CITY SCHOOL DISTRICT
 BAKERSFIELD CALIFORNIA

G. B. ALFORD • ARCHITECT • W. J. THOMAS
 602 HABERFELDE BUILDING - PHONE 2-1302
 BAKERSFIELD CALIFORNIA

SHEET No. 12