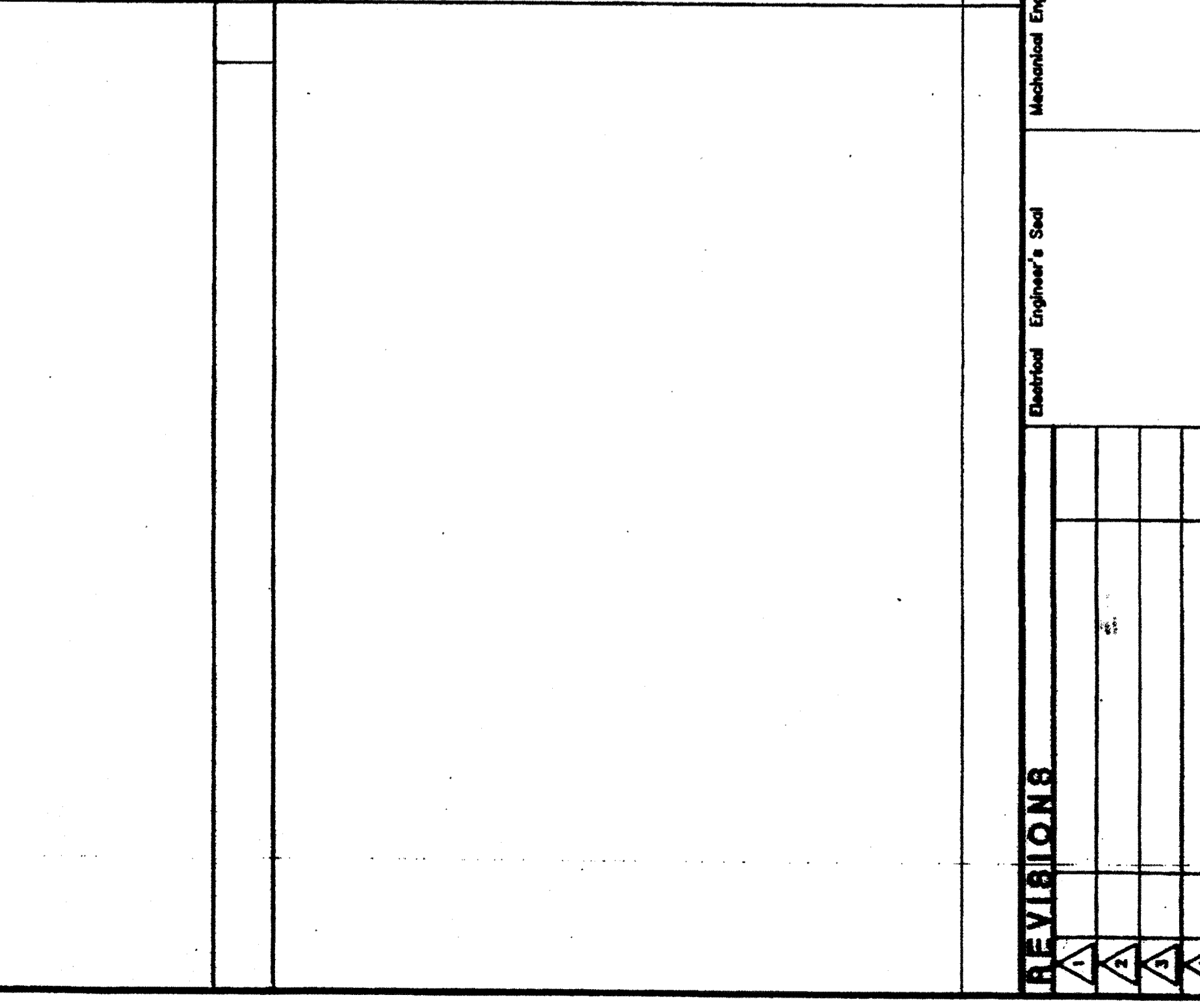
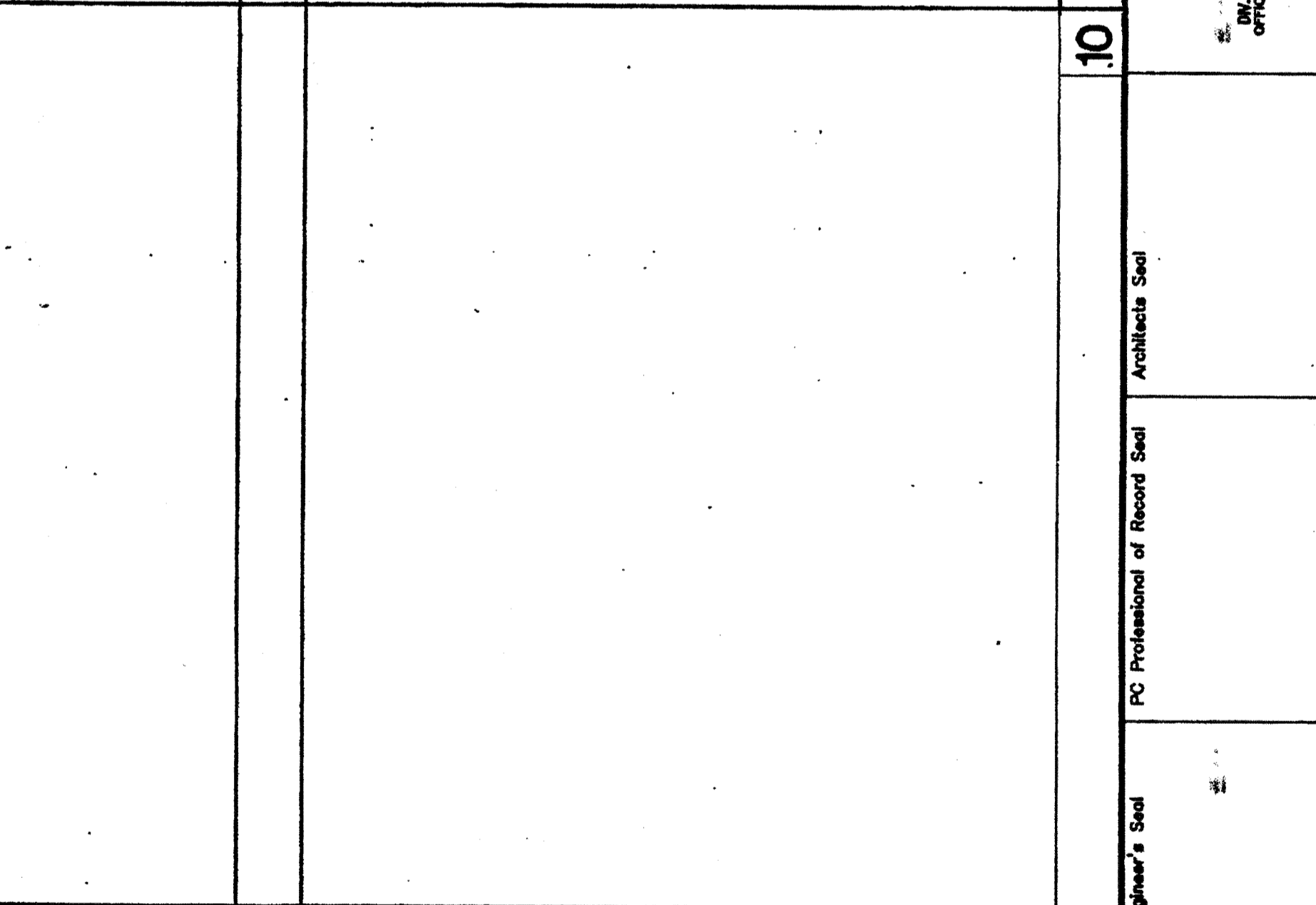
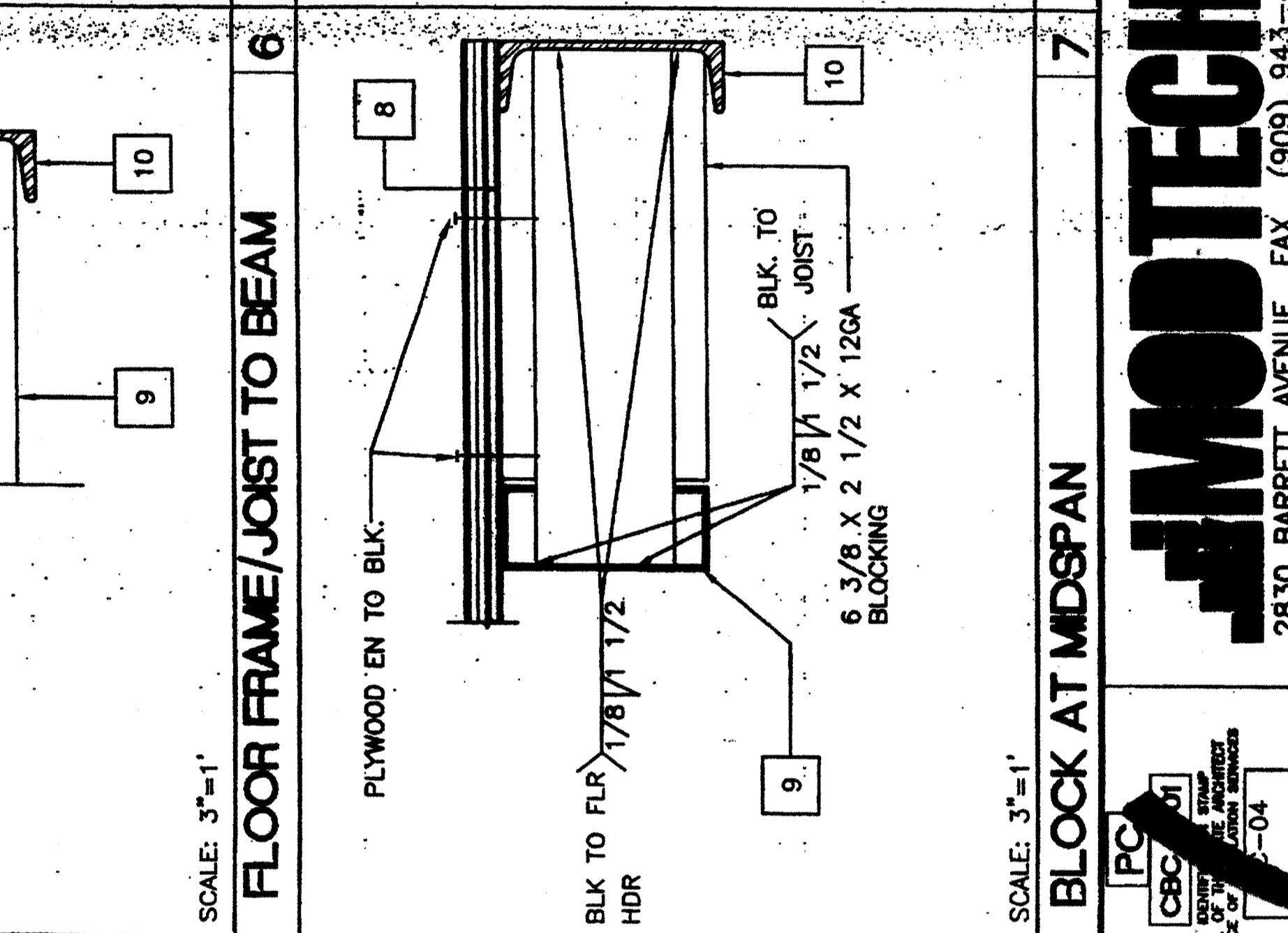
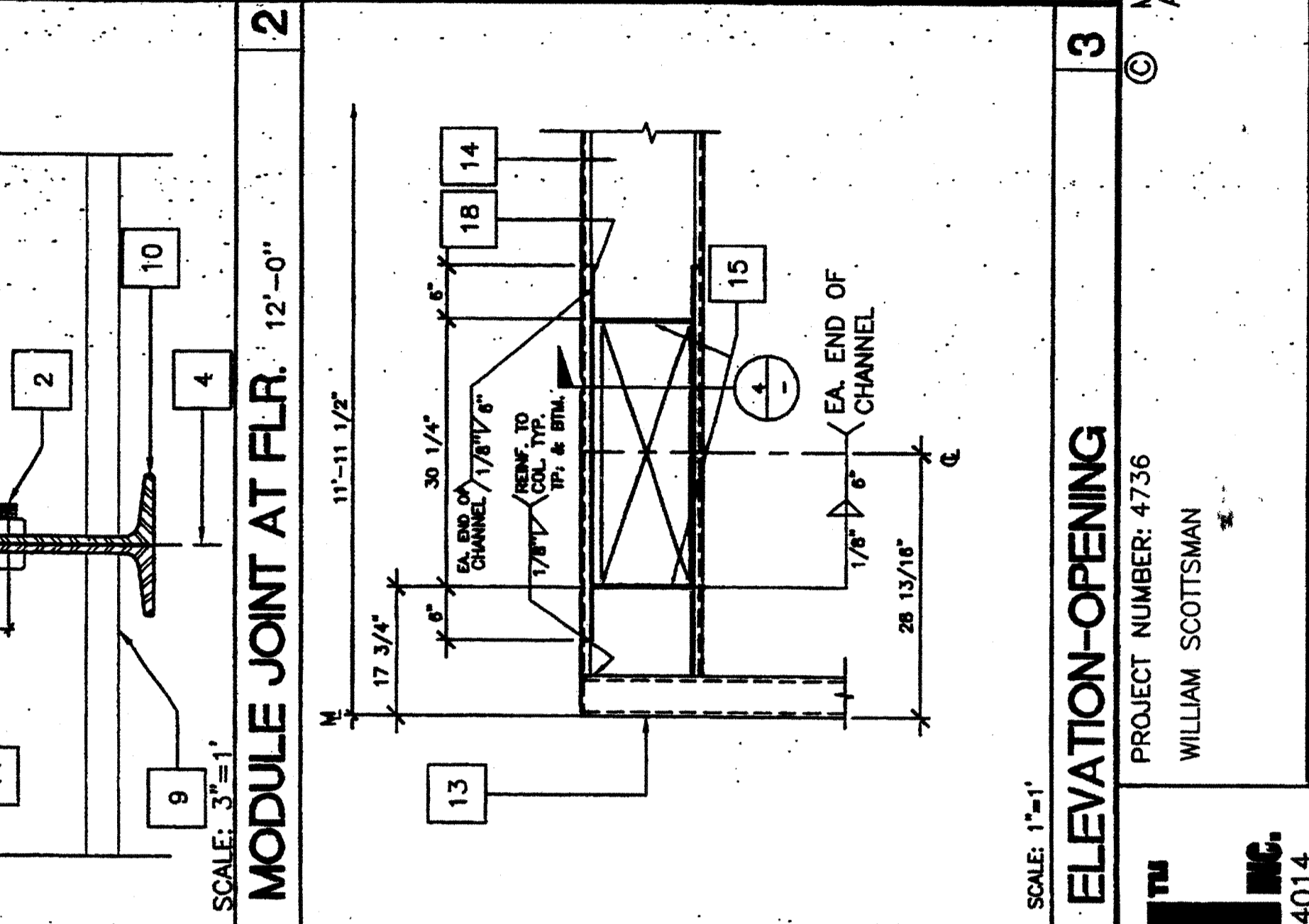
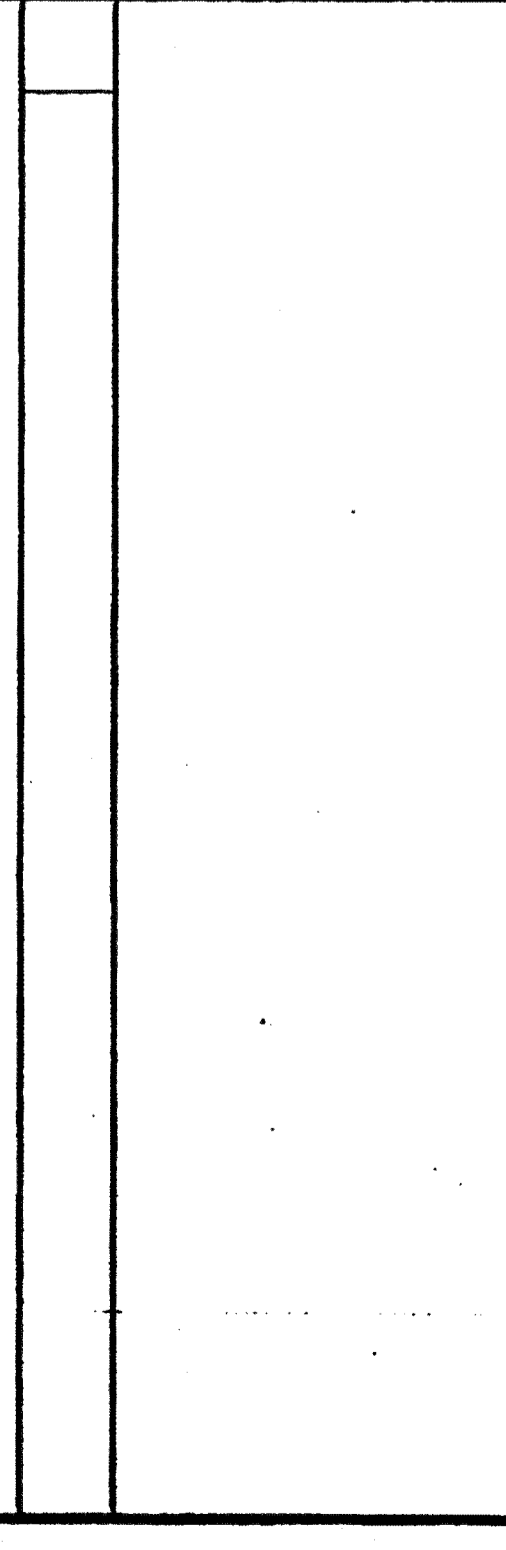
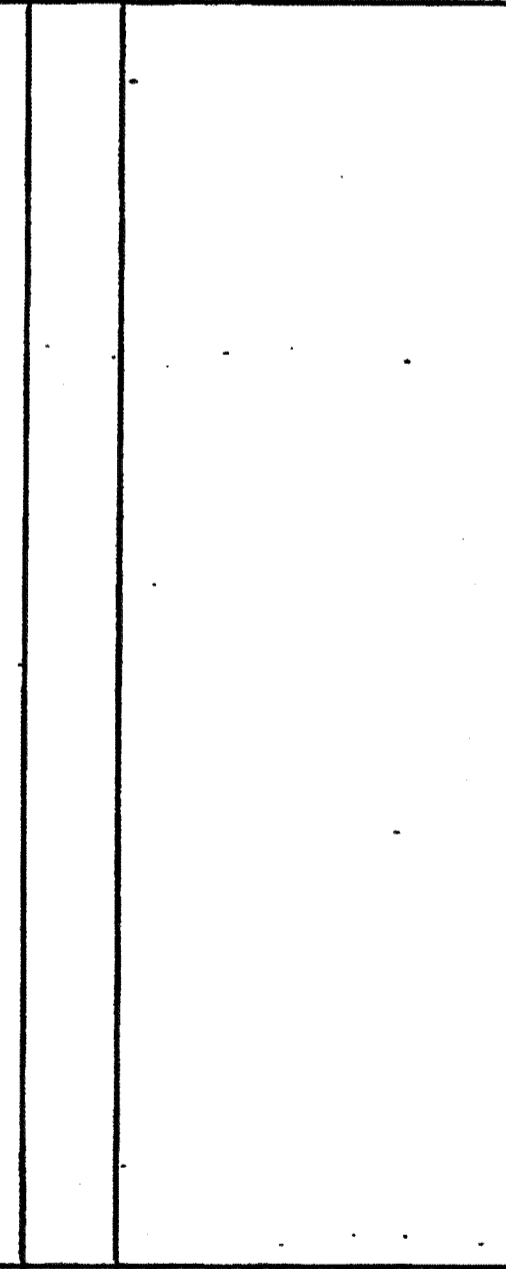
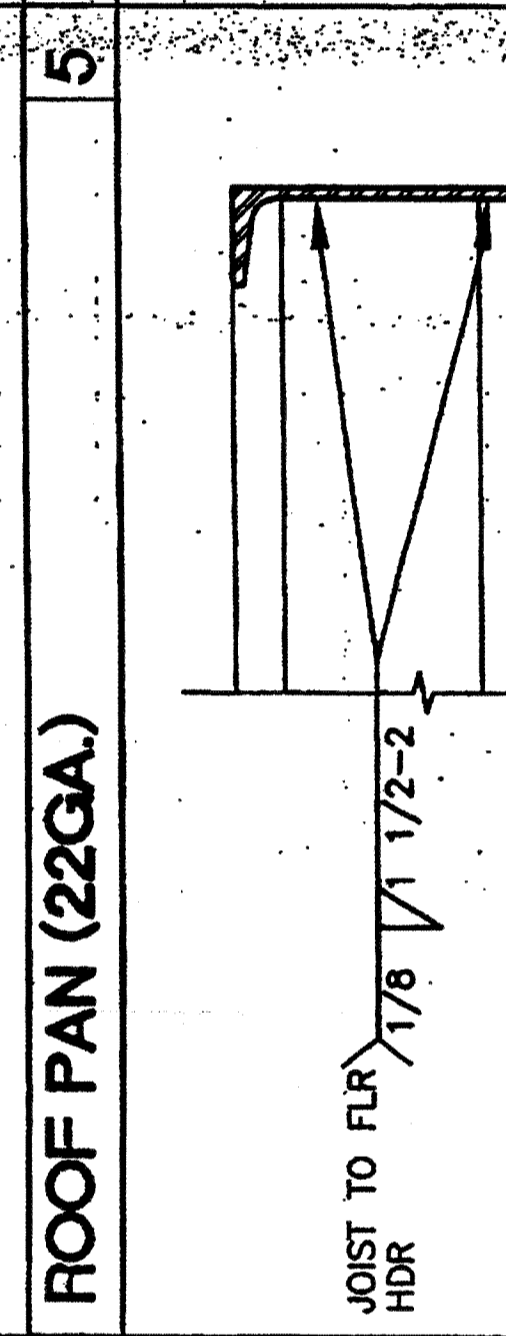
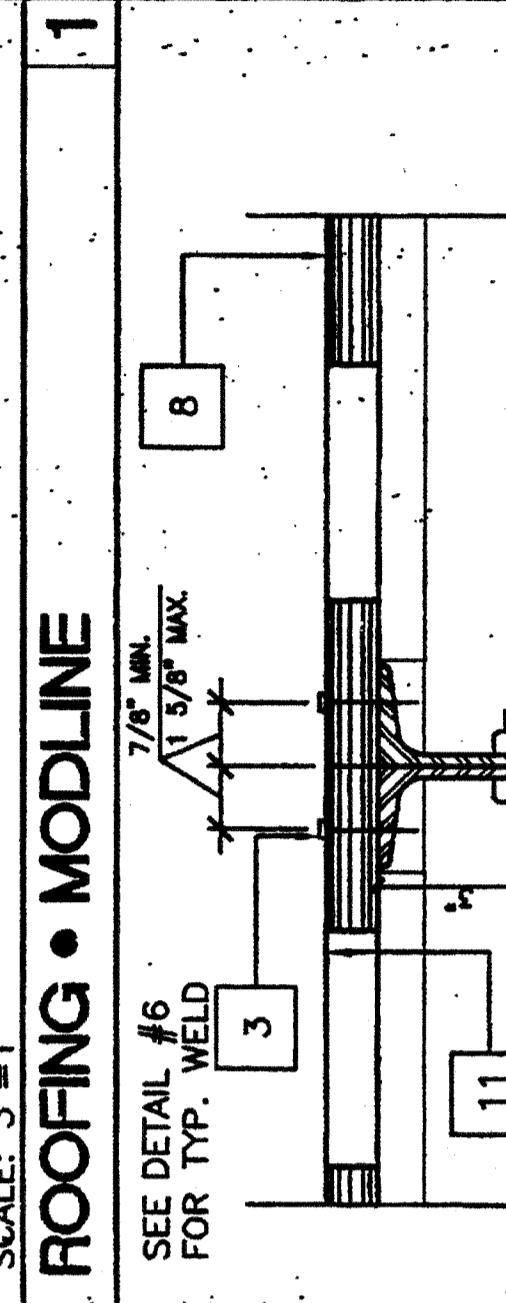
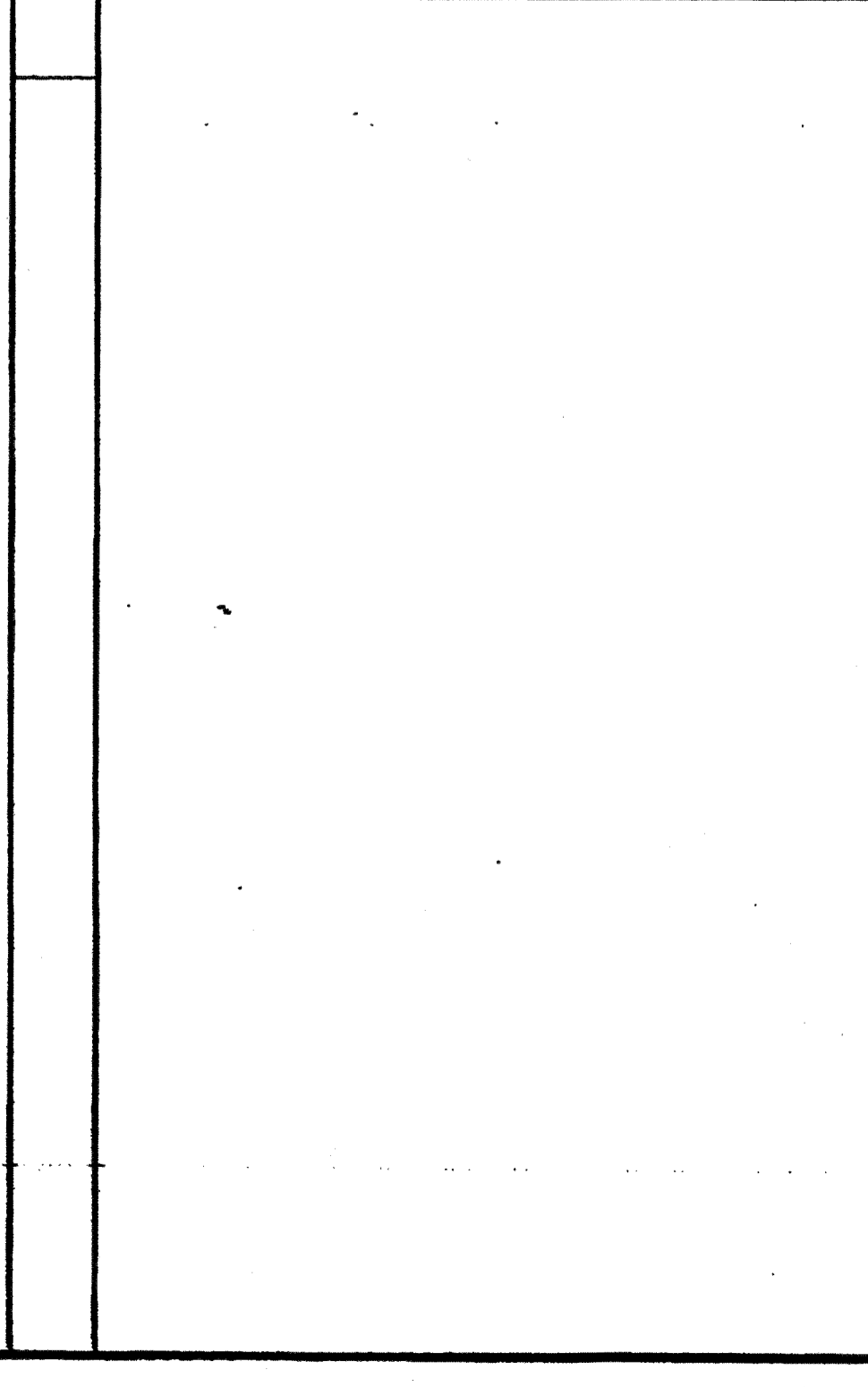
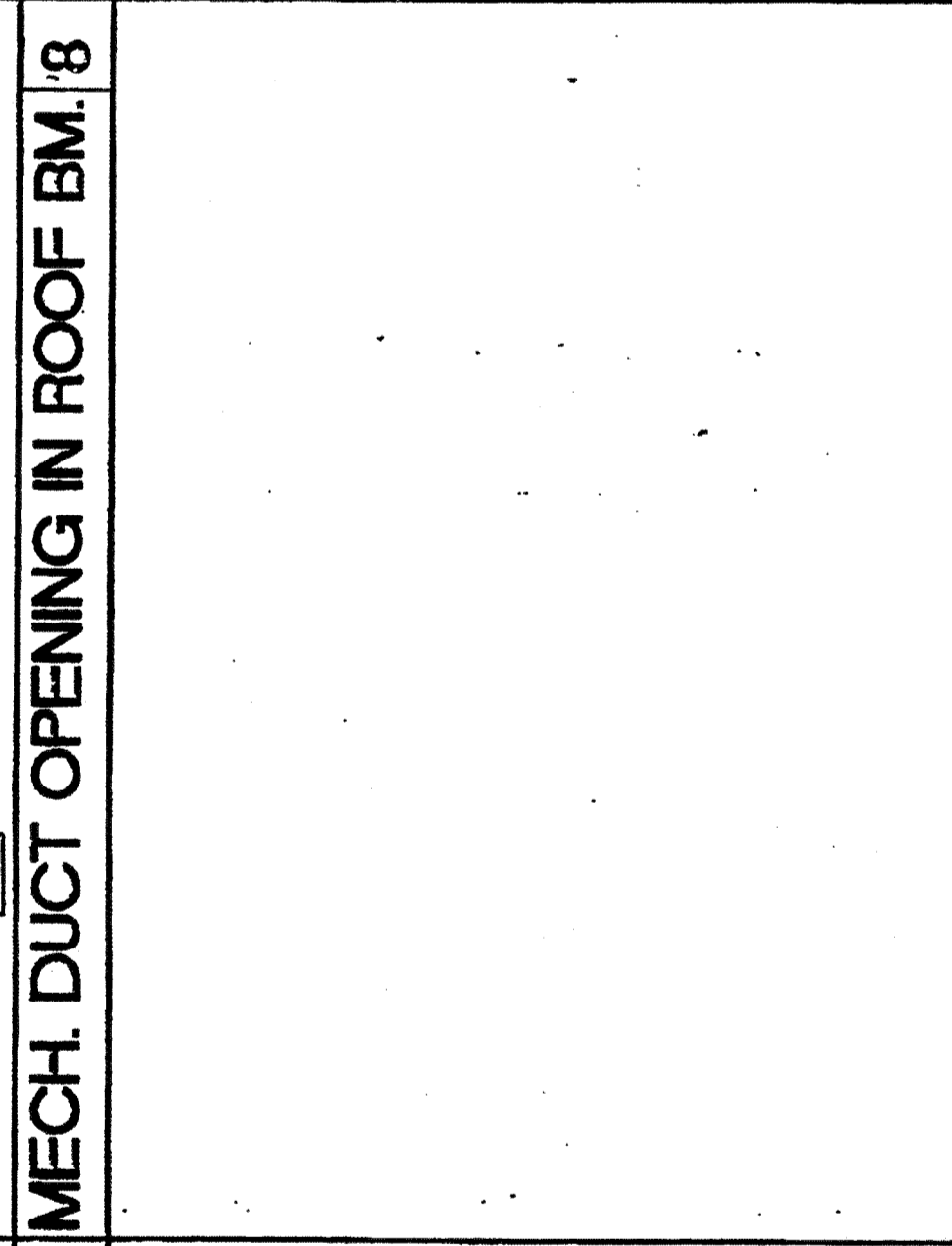
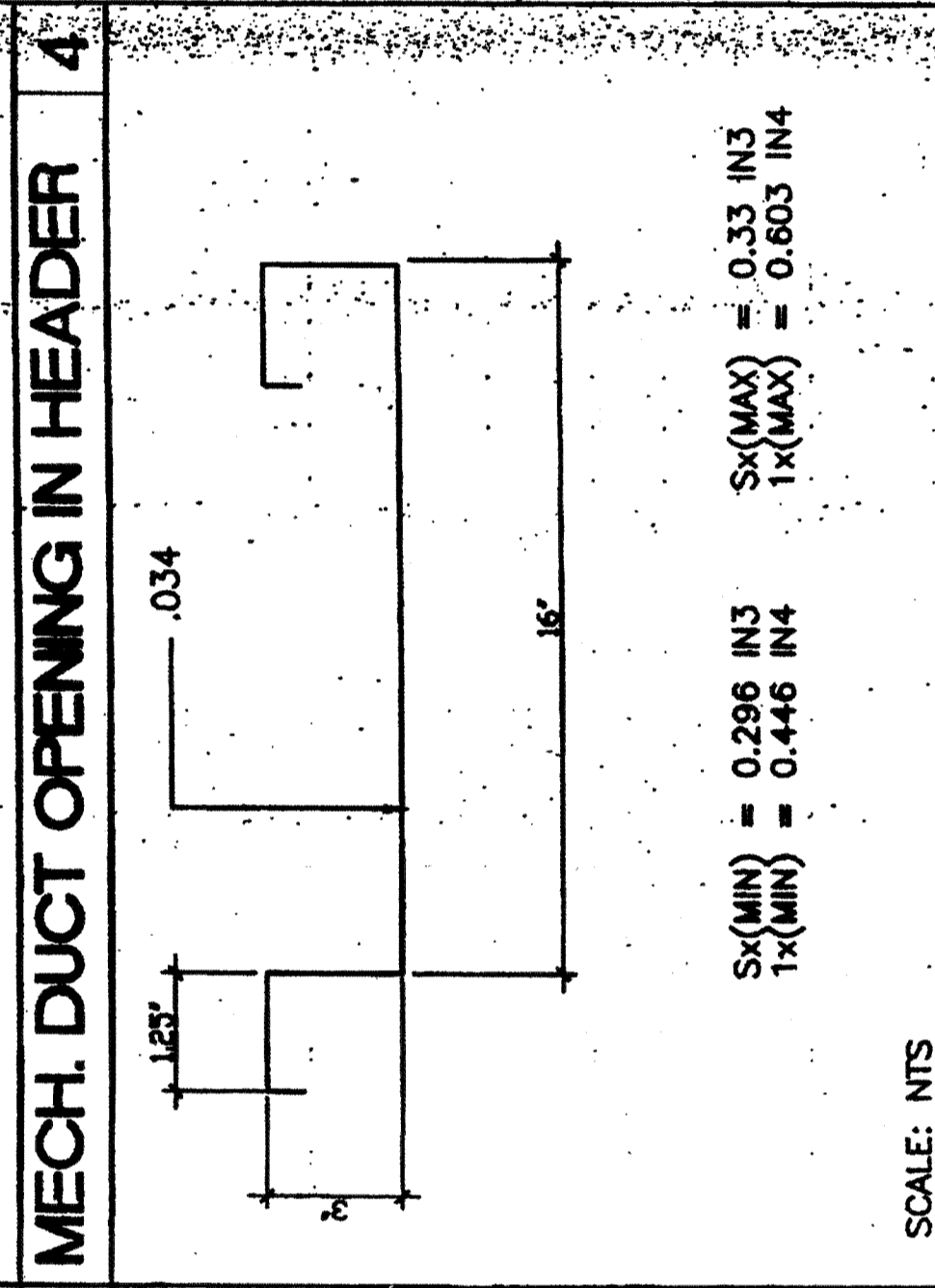
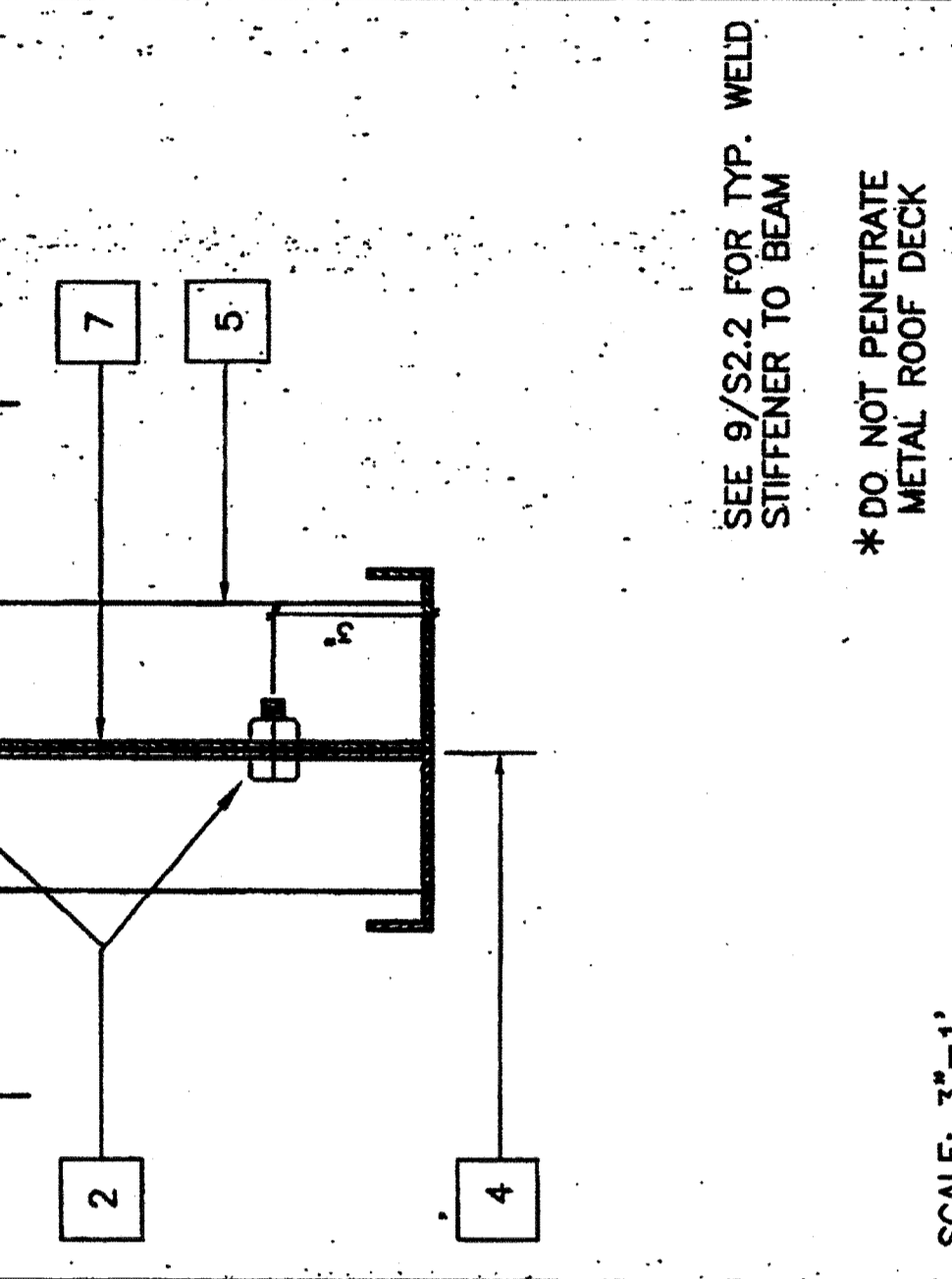
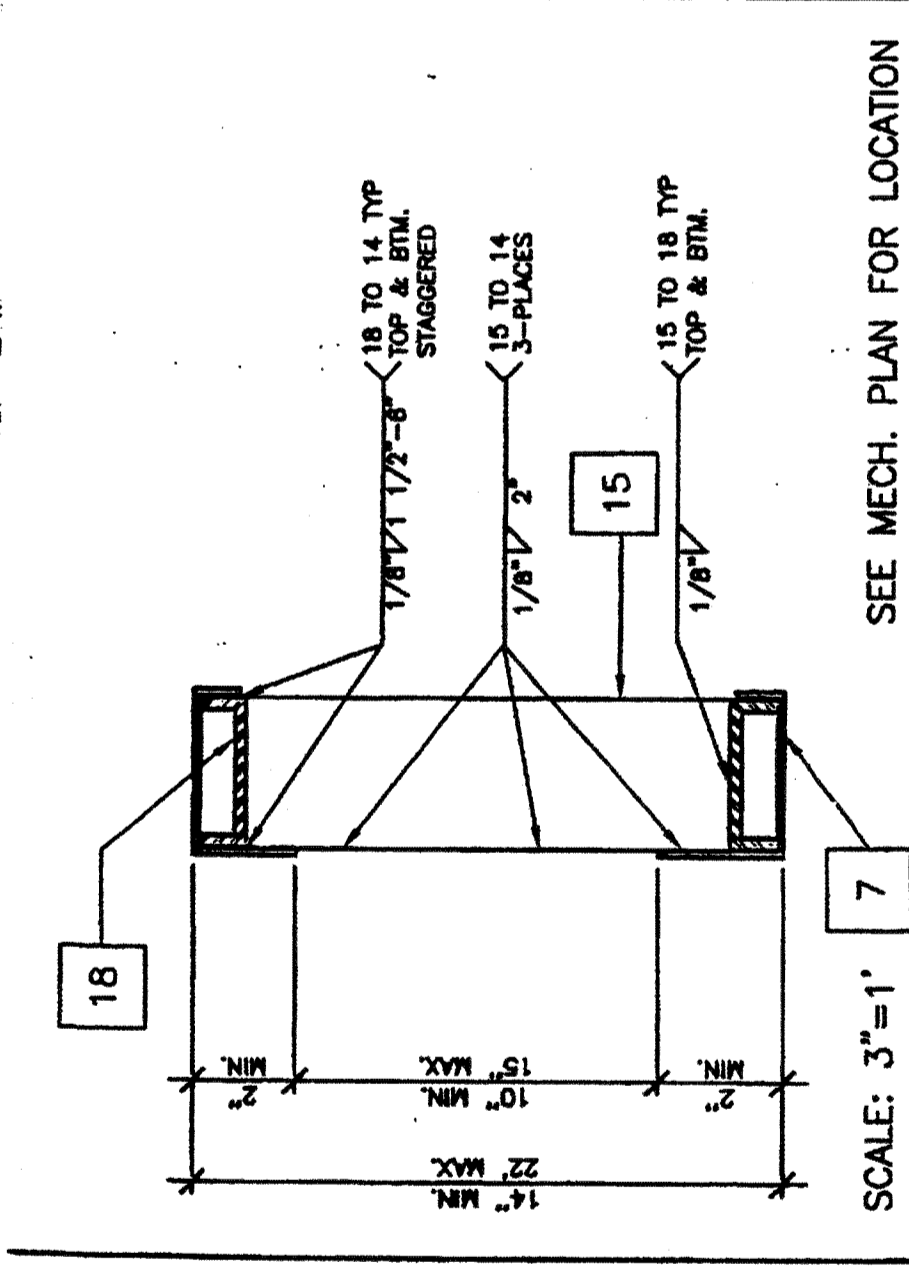
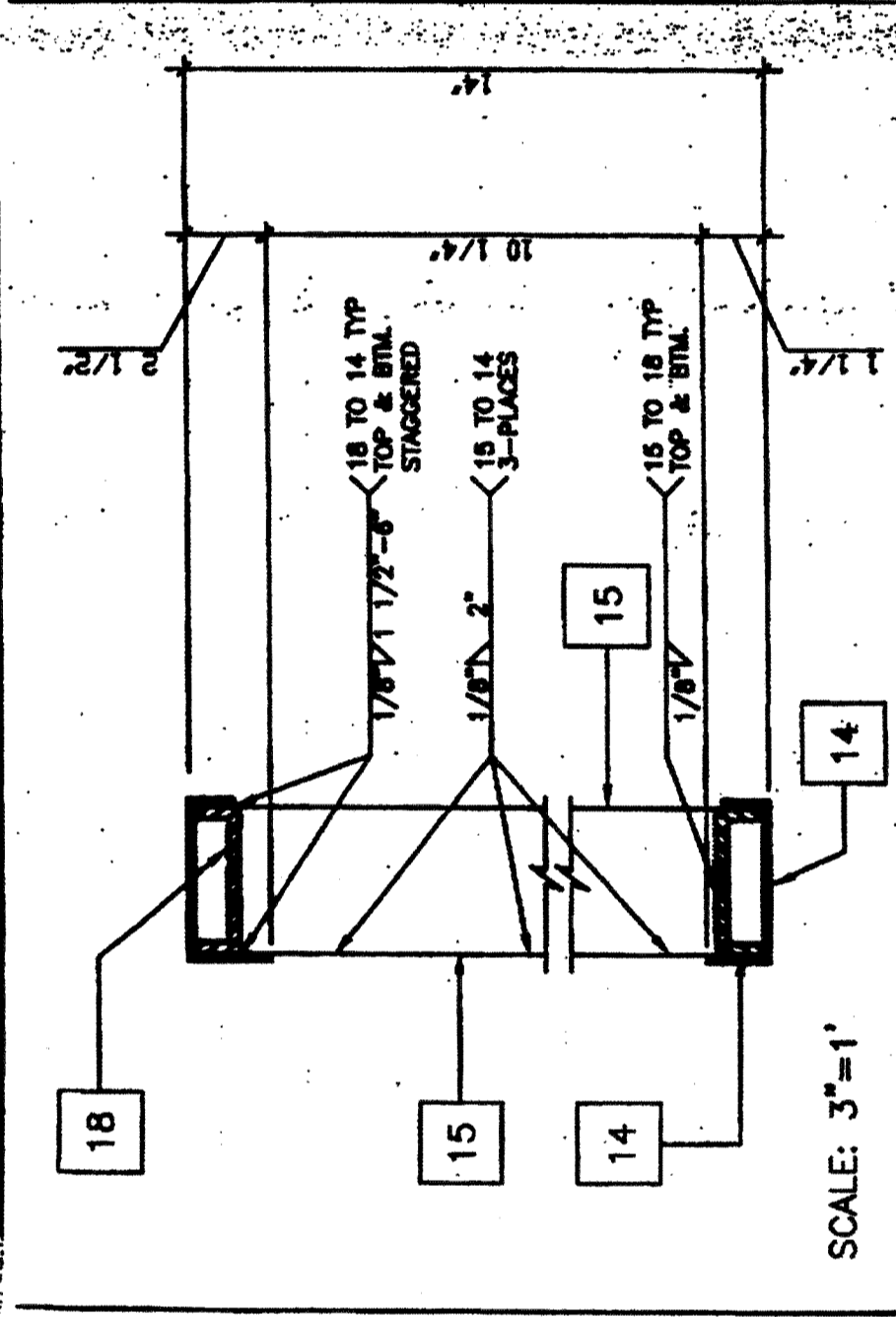
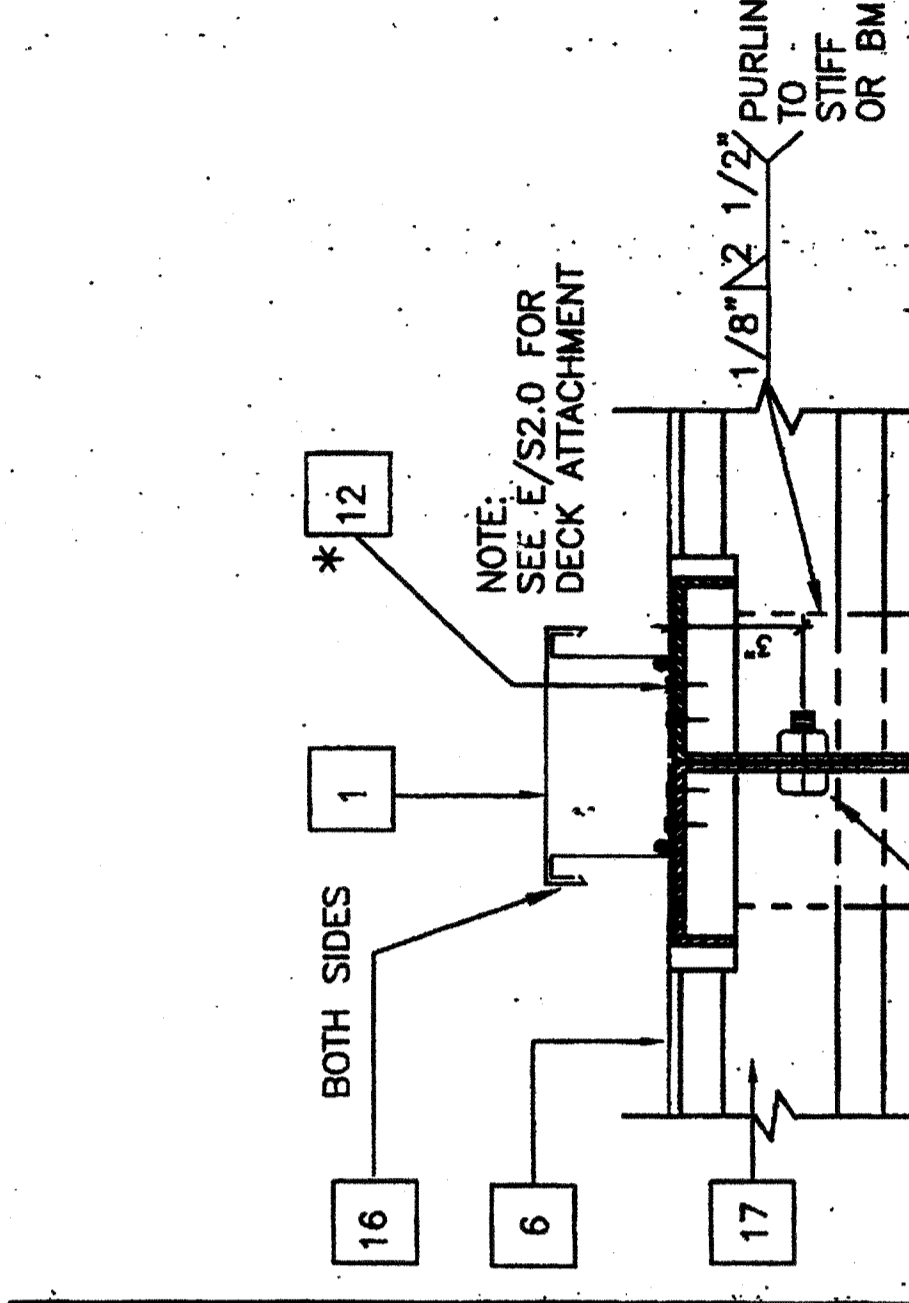


KEY NOTES

- 1 CAP CLOSURE AT RIDGE 28GA. GALV. W/10 TYPE FASTENERS W/NEOPRENE WASHERS TO RIB BOTH SIDES OF MODLINE. SET CAP IN SEALANT. BOTH SIDES.
- 2 5/8" M.B. A307 MODULE JOINT (SEE STRUCTURAL PLAN FOR LOCATION) AT 8" O.C.
- 3 E.N.
- 4 MODULE JOINT
- 5 1/4" THK X 3" FULL DEPTH STIFFENER PLATE AT RIDGE ONLY (SEE 9/S2.2)
- 6 STANDING ROOF SEAM (SEE A2.0)
- 7 ROOF BEAM SEE 1/S2.2 & 7/S2.2
- 8 PLYWOOD FLOOR SHEATHING
- 9 FLOOR JOIST SEE 6/S2.2
- 10 FLOOR BEAM SEE 5/S2.2
- 11 HAND HOLE AT BOLT LOCATION
- 12 #14 STMS.
- 13 3 1/2" X 1/2" X 1/4" STEEL TUBE COLUMN. SEE 12/S2.2
- 14 ROOF HEADER SEE 3/S2.2
- 15 1/4" STIFFENER PLATE SEE 9/S2.2 FOR TYP. WELD
- 16 SEALANT
- 17 ROOF PURLIN SEE 2/S2.2
- 18 3 1/4" X 1" X 45 11/16" LG X 10GA CHANNEL. TOP AND BOTTOM OF OPENING



REVISIONS

MECHANICAL ENGINEER'S SEAL
 ARCHITECT'S SEAL
 RECORD SEAL

PROJECT NUMBER: 4736
 WILLIAM SCOTTSMAN

MODTECH, INC.
 2830 BARRETT AVENUE FAX (909) 943-4014
 PERRIS, CALIF. 92572 FAX (909) 940-0427

STRUCTURAL DETAILS

PROJECT NO. 4736

MODTECH, INC. 2002
 ALL RIGHTS RESERVED

DRAWN BY: GL
 DATE: 07/07/03
 CHECKED BY: DATE:
 MODTECH DRAWING NO. 51.2

IDENTIFICATION STAMP
 DIVISION OF THE STATE ARCHITECT
 117550
 JUL 10 2003