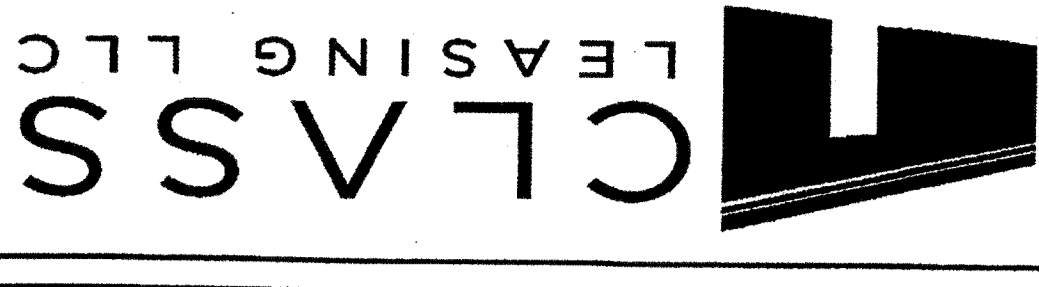


REVISIONS	BY

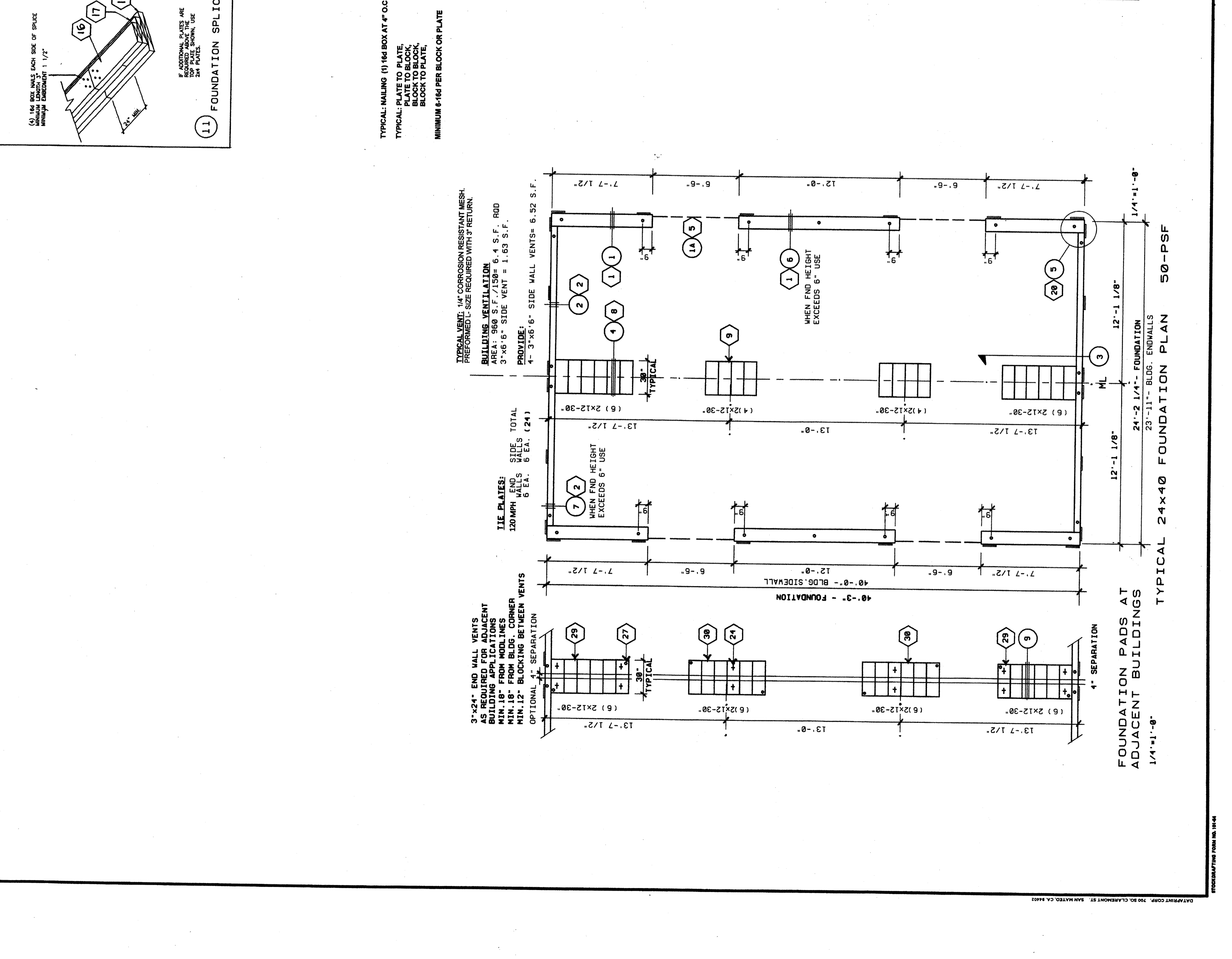
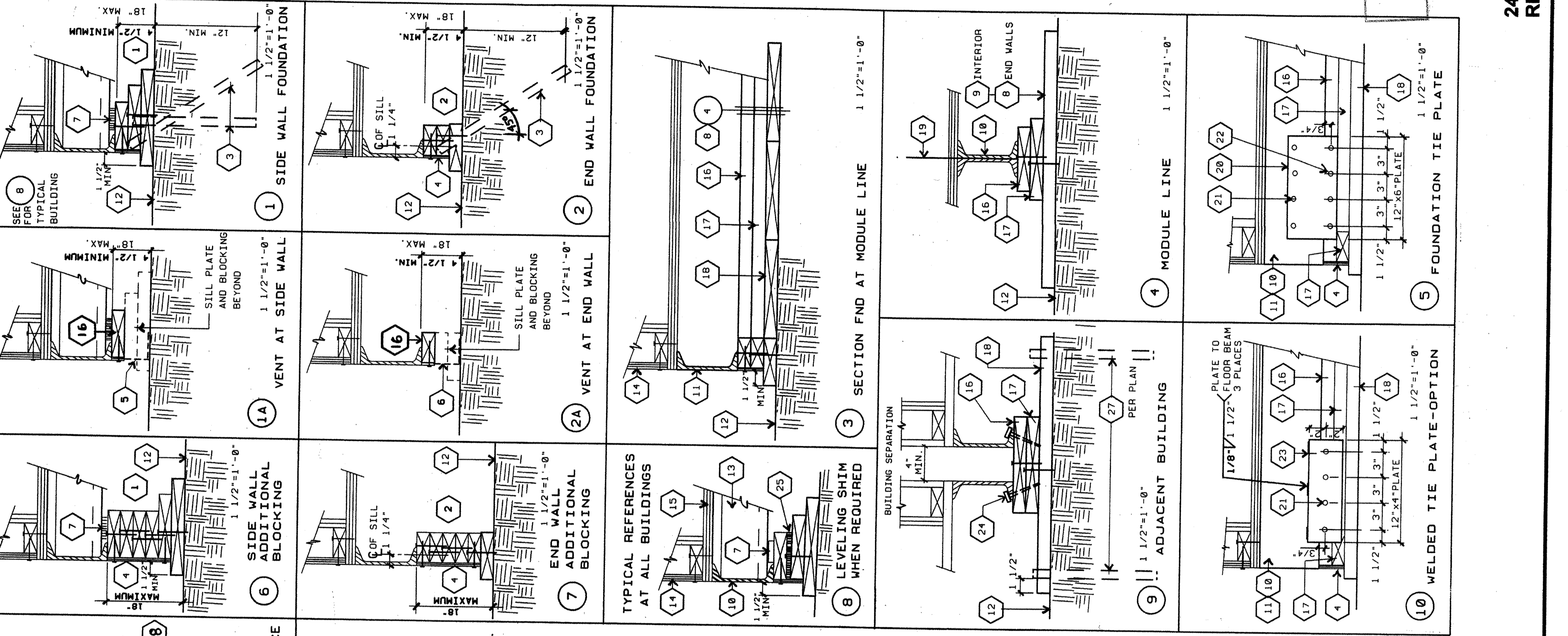


**Class Leasing, LLC**  
 1221 Harley Knox Blvd, Perris, CA 92571-7408  
 VOICE (951)943-1908 FAX (951)943-5768

**CLASS LEASING, INC.**  
**STOCKPILE CLASSROOM**  
**24x40 - 50 PSF RELOCATION**  
**FOUNDATION PLAN & DETAILS**

DATE 08-29-2014  
 SCALE  
 DRAWN LAM-CLS  
 JOB 24x40 50 PSF  
 SHEET **F2.0**

- KEY NOTES 24x40 - 50 PSF FLOOR LOAD**
- FOUNDATION AT SIDE WALL**
- TOP PLATE: 2x8 CONTINUOUS W/ (1) 16d NAIL AT 4" O.C. TO BLOCKING PLATE BELOW. BLOCKING: 2x8 CONTINUOUS W/ (1) 16d NAIL AT 4" O.C. TO BLOCKING OR SILL PLATE BELOW. SILL PLATE: 2x12 (PT) WITH SILL RESTRAINT PER GENERAL NOTE #A.
  - TOP PLATE: 2x4 CONTINUOUS W/ (1) 16d NAIL AT 4" O.C. TO BLOCKING PLATE BELOW. BLOCKING: 2x4 CONTINUOUS W/ (1) 16d NAIL AT 4" O.C. TO BLOCKING OR SILL PLATE BELOW. SILL PLATE: 2x8 (PT) WITH SILL RESTRAINT PER GENERAL NOTE #A.
  - SILL RESTRAINT: PIPE TO GRADE (TYP) SEE GENERAL NOTE #A.
  - SKIRTING: 3/8" PLYWOOD, ATTACH WITH 10d NAILS, EDGE NAILING 4" O.C. AT END WALLS AND 6" O.C. AT SIDE WALLS. FIELD NAILING 12" O.C.
  - SIDEWALL VENT: 3" HIGH BY 6 1/2" LONG, INSTALL UNDER SKIRTING.
  - ENDWALL VENT: 3" HIGH BY 2'-0" LONG, INSTALL UNDER SKIRTING.
  - SHIM: 2x4 CONTINUOUS W/ (1) 16d NAIL AT 4" O.C. TO BLOCKING OR SILL PLATE BELOW. SHIM: 2x4 CONTINUOUS W/ (1) 16d NAIL AT 4" O.C. TO BLOCKING OR SILL PLATE BELOW.
- FOUNDATION AT END WALL**
- TOP PLATE: 2x4 CONTINUOUS W/ (1) 16d NAIL AT 4" O.C. TO BLOCKING PLATE BELOW. BLOCKING: 2x4 CONTINUOUS W/ (1) 16d NAIL AT 4" O.C. TO BLOCKING OR SILL PLATE BELOW. SILL PLATE: 2x8 (PT) WITH SILL RESTRAINT PER GENERAL NOTE #A.
  - TOP PLATE: 2x8 CONTINUOUS W/ (1) 16d NAIL AT 4" O.C. TO BLOCKING PLATE BELOW. BLOCKING: 2x8 CONTINUOUS W/ (1) 16d NAIL AT 4" O.C. TO BLOCKING OR SILL PLATE BELOW. SILL PLATE: 2x12 (PT) WITH SILL RESTRAINT PER GENERAL NOTE #A.
- FOUNDATION AT MOD LINE / INTERIOR WALL**
- TOP PLATE: 2x8 CONTINUOUS W/ (1) 16d NAIL AT 4" O.C. TO BLOCKING PLATE BELOW. BLOCKING: 2x10 CONTINUOUS W/ (1) 16d NAIL AT 4" O.C. TO BLOCKING OR SILL PLATE BELOW. SILL PLATE: (6) 2x12x30 (PT)
  - FLOOR BEAM: C7x 8.8 TYPICAL
  - FLOOR HEADER: C7x 9.8 TYPICAL
  - FINISH GRADE
  - FLOOR JOIST
  - EXTERIOR FINISH
  - PLYWOOD SUB-FLOOR
  - TOP PLATE: CONTINUOUS
  - BLOCKING
  - SILL PLATE
  - MODLINE
  - TIE PLATE: 12" x 6" x 10 GA
  - PLATE ANCHOR: 4" DIA.  $\phi$  S.M.S. (1 1/2" MIN. EMBEDMENT)
  - PLATE ANCHOR: 4" DIA. x 2" LONG LAG SCREWS (1 1/2" MIN. EMBEDMENT)
  - TIE PLATE: 12" x 4" x 10 GA
  - BUILDING ANCHORAGE: 6-5/8" x 4" LAG SCREWS AT EACH BUILDING (FOR LOCATION SEE PLAN AT ADJACENT BUILDINGS)
  - LOCATION OF SHIM PLATES WHERE REQUIRED FOR LEVELING, USE 1/4" 12" OR 3/4" PLYWOOD AT SAME WIDTH AS PLATE. NAIL SHIM TO PLATE WITH (6) 10d BOX NAILS.
  - CUT OUT OF SILL PLATE FOR DRAINAGE. FIELD TO LOCATE AT LOWEST CORNER OF FOUNDATION.
  - 1" PIPE EACH END OF PAD AT ADJACENT BUILDING LINE.
  - THIS VENT TO BE LOCATED UNDER LANDING.
  - PROVIDE EQUAL AREA SCREENED VENTILATION IN LANDING SKIRT.
- FOUNDATION AT BUILDING SEPARATION / END WALL**
- TOP PLATE: 2x12 CONTINUOUS W/ (1) 16d NAIL AT 4" O.C. TO BLOCKING PLATE BELOW. BLOCKING: 2x12 CONTINUOUS W/ (1) 16d NAIL AT 4" O.C. TO BLOCKING OR SILL PLATE BELOW. SILL PLATE: (6) 2x12x30 (PT) WITH SILL RESTRAINT PER PLAN AND NOTE 25.
  - FOUNDATION AT BUILDING SEPARATION / INTERIOR WALL
  - TOP PLATE: 2x12 CONTINUOUS W/ (1) 16d NAIL AT 4" O.C. TO BLOCKING PLATE BELOW. BLOCKING: 2x12 CONTINUOUS W/ (1) 16d NAIL AT 4" O.C. TO BLOCKING OR SILL PLATE BELOW. SILL PLATE: (6) 2x12x30 (PT) WITH SILL RESTRAINT PER PLAN AND NOTE 25.
- GENERAL NOTES**
- SILL RESTRAINT: THE FOUNDATION SHALL BE DESIGNED TO PREVENT SLOTTING ON THE SUPPORTING SURFACE (ASPHALT CONCRETE PAVING OR SOIL OR ON BRIMS OF CONCRETE SLAB ON GRADE) BY ATTACHING THE WOOD FOUNDATION PLATES FOR THE BUILDING, WALLS AND STAIRS TO THE GROUND WITH RESTRAINING DEVICES. USE A ONE-INCH DIAMETER STANDARD WEIGHT (1.315" ACTUAL O.D.) HOT DIPPED GALVANIZED ONE END SPOURED SHIM ROD SPACED AT NOT MORE THAN 10'-0" IN EACH DIRECTION AND A MINIMUM OF TWO PER ROOMS PER UNCONFINED FOUNDATION STRIP. PIPES TO PENETRATE INTO SOIL AND 69 PIPES AT MINIMUM OF 12" MEASURED VERTICALLY. 18'-1/2" LONG PIPE REQUIRED FOR PENETRATION AT 45 DEGREE ANGLE.
  - TO PREVENT WATER FROM PONDING BENEATH THE STRUCTURE VERIFY DRAINAGE WITH DISTRICT ARCHITECT SITE PLANS.
  - A WOOD SILL FOOTING PLATE SHALL BE PRESSURE TREATED HEM FIR OR COUG FIR AND MAY BEAR DIRECTLY ON SOIL OR PAVED SURFACE. GRASS OR TURF SHALL BE CLEARED TO EXPOSE THE SILL FOOTING PLATE AND THE SURFACE AREA OF THE BUILDING (BY DISTRICT). THE WOOD SILL FOOTING PLATE SHALL BE PRESSURE TREATED HEM FIR OR COUG FIR. THE WOODS BLOCKING AND SHEATHING (SKIRT) WHICH NEED NOT BE TREATED. FOUNDATION LUMBER TO BE PRECUT AT FACTORY. LUMBER AND PRESSURE TREATING TO BE VERIFIED BY THE INSPECTOR.
  - FOUNDATION DESIGN FOR 1000 PSF SOIL BEARING PRESSURE.
  - THIS FOUNDATION PLAN HAS 1/4" MOULD AT EACH MODLINE AND 1/8" AT EACH SIDE WALL AND DOES NOT MATCH THE FLOOR PLAN DIMENSIONS. THIS IS REQUIRED FOR GROWTH THAT IS REQUIRED WHEN BETTING MULTIPLE MODULE BUILDINGS.
  - MACHINE APPLIED 16d FASTENERS SHALL HAVE AN EMBEDMENT OF NOT LESS THAN 1 1/2" INTO SECOND MEMBER, AND SHALL BE NOT LESS THAN 3 1/2" IN OVERALL LENGTH.
  - THE ABOVE SHALL ALSO BE ACCEPTABLE FOR HAND NAILING PROVIDED THE REQUIRED EMBEDMENT IS MAINTAINED.
- PRE-CHECK (PG) DOCUMENT  
 A SEPARATE PROJECT APPLICATION FOR CONSTRUCTION IS REQUIRED  
 REGISTERED PROFESSIONAL ARCHITECT  
 STATE OF CALIFORNIA  
 NO. 35632  
 DATE: OCT 08 2014  
 LICENSE EXPIRES 9-30-2016



**24x40 - 50 PSF STOCKPILE CLASSROOM RELOCATION FOUNDATION PLAN & DETAILS**  
 Class Leasing LLC 2014