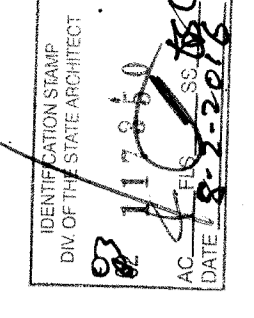
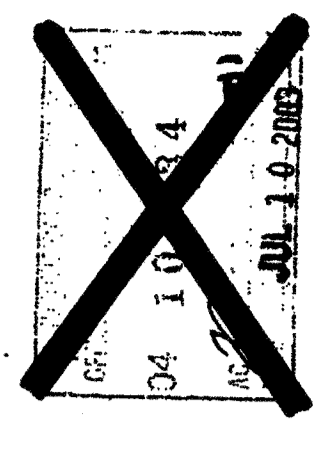
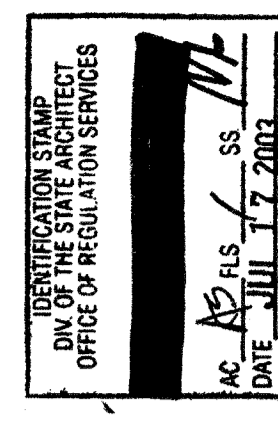


KEY NOTES

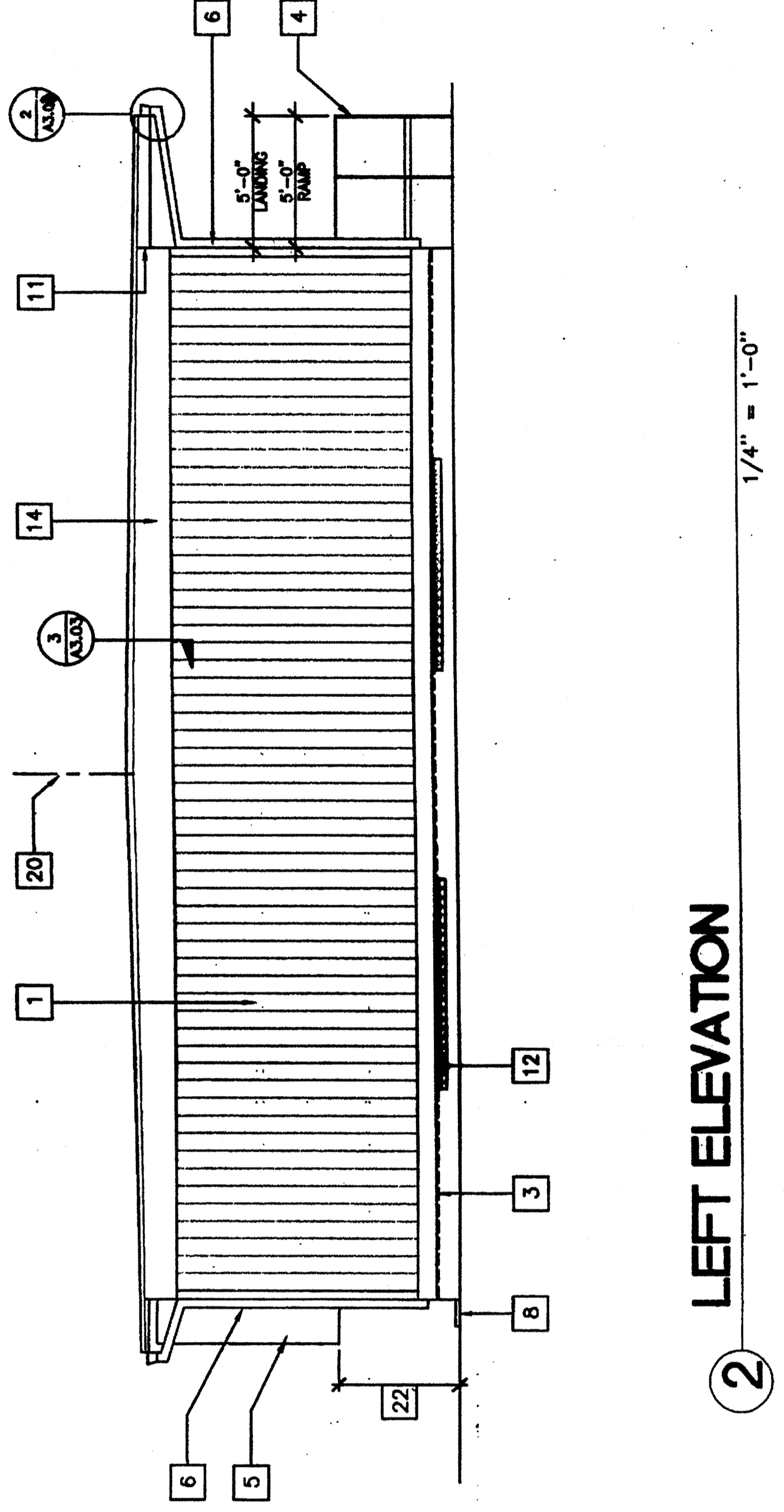
- 1 TYPICAL EXTERIOR SIDING (SEE A6.02)
- 2 EXTERIOR LIGHT FIXTURE (SEE SPEC'S)
- 3 TOP OF SKIRTING
- 4 RAMP AND LANDING (SEE RAMP DRAWINGS)
- 5 HVAC UNIT. SEE (M)
- 6 DOWNSPOUT (TYP.) FOR (2). FASTEN TO BLD'G. TYP 3 PLACES (SEE 16/A4.03)
- 7 CONTINUOUS GUTTER WITH DOWNSPOUT (LOCATION OF DOWNSPOUT SHOWN ON ROOF PLAN) SEE A3.01
- 8 SPLASH BLOCK (BY OTHERS)
- 9 FINISH FLOOR LINE
- 10 BOTTOM FLANGE OF FLOOR BEAM
- 11 ROOF HEADER
- 12 VENT. SEE FOUNDATION PLAN
- 13 FINISH GRADE
- 14 ROOF BEAM SEE (M)
- 15 COLUMN SEE (M)
- 16 ELECTRICAL STUB-OUT SEE (E)
- 17 GROUND STUB-OUT SEE (E)
- 18 J BOX FOR EXT. FA HORN SEE (E)
- 19 NEMA 6" X 6" GUTTER BOX SEE (E)
- 20 RIDGE
- 21 NOT USED
- 22 IF HVAC UNIT IS LOCATED IN ANY PATH OF TRAVEL OR CIRCULATION AREA AND HEIGHT FROM GRADE TO BOTTOM OF UNIT EXCEEDS 27" THEN PROTECTION MUST BE PROVIDED BY DISTRICT PRIOR TO OCCUPANCY
- 23 STORAGE PROVIDED AND INSTALLED BY DISTRICT PRIOR TO OCCUPANCY. SEE SHEET A4.02

NOTES

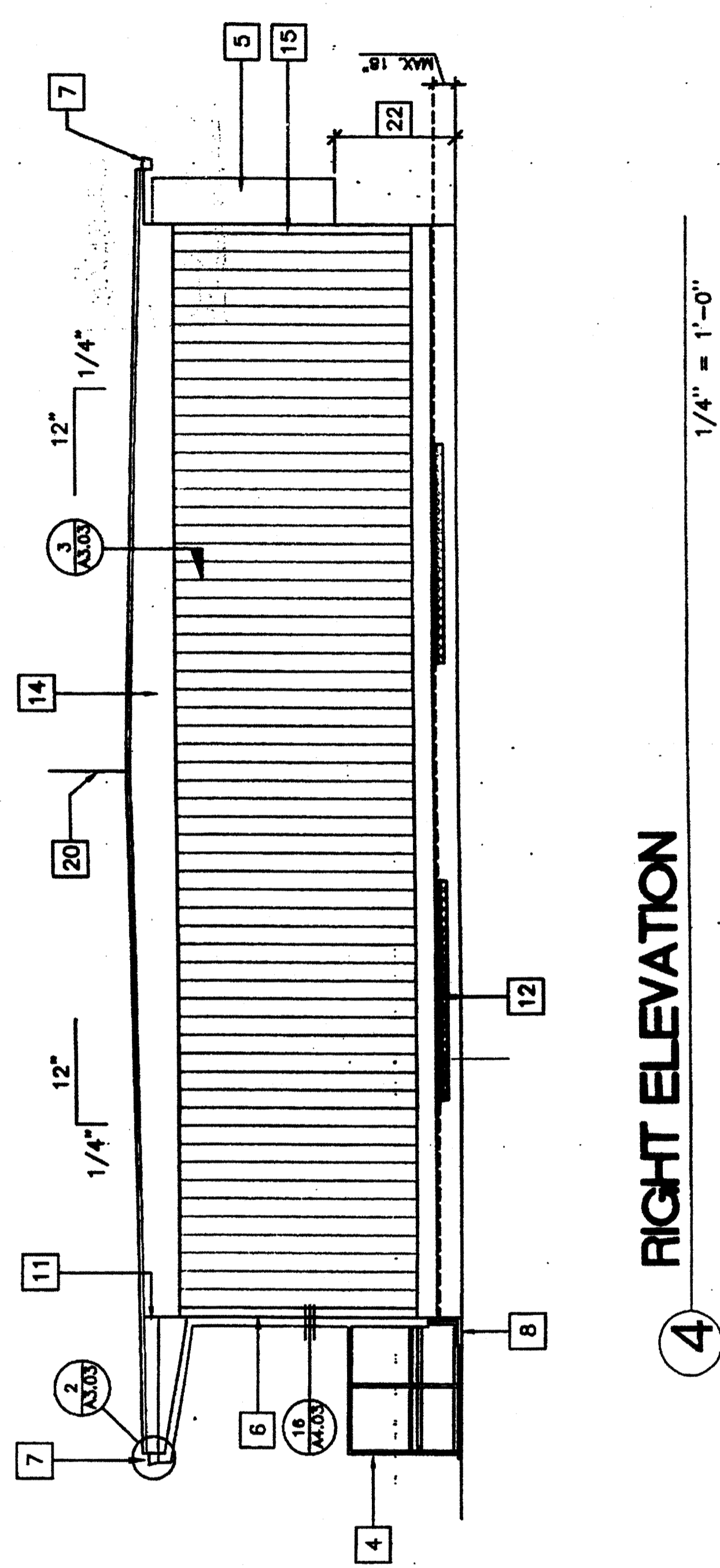
1. SEE FOUNDATION PLAN FOR SIZE AND LOCATION OF UNDER FLOOR VENTS.



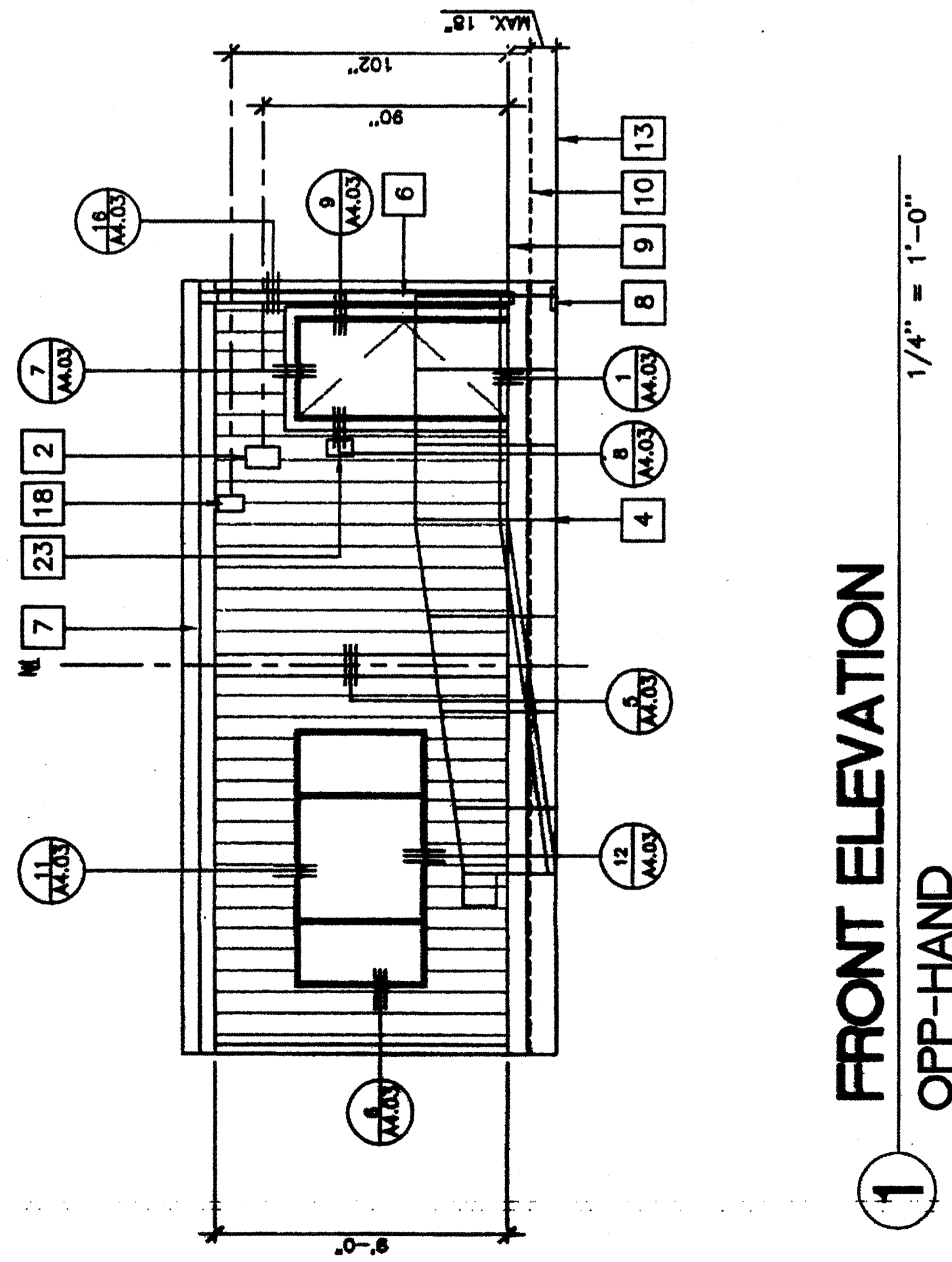
PROJECT NO. 4736
 PROJECT NUMBER: 4736
 MODTECH, INC. 2002
 ALL RIGHTS RESERVED
 DRAWN BY: GL
 DATE: 07/07/03
 CHECKED BY:
 DATE:
A4.01
 EXTERIOR ELEVATIONS W/ FASCIA



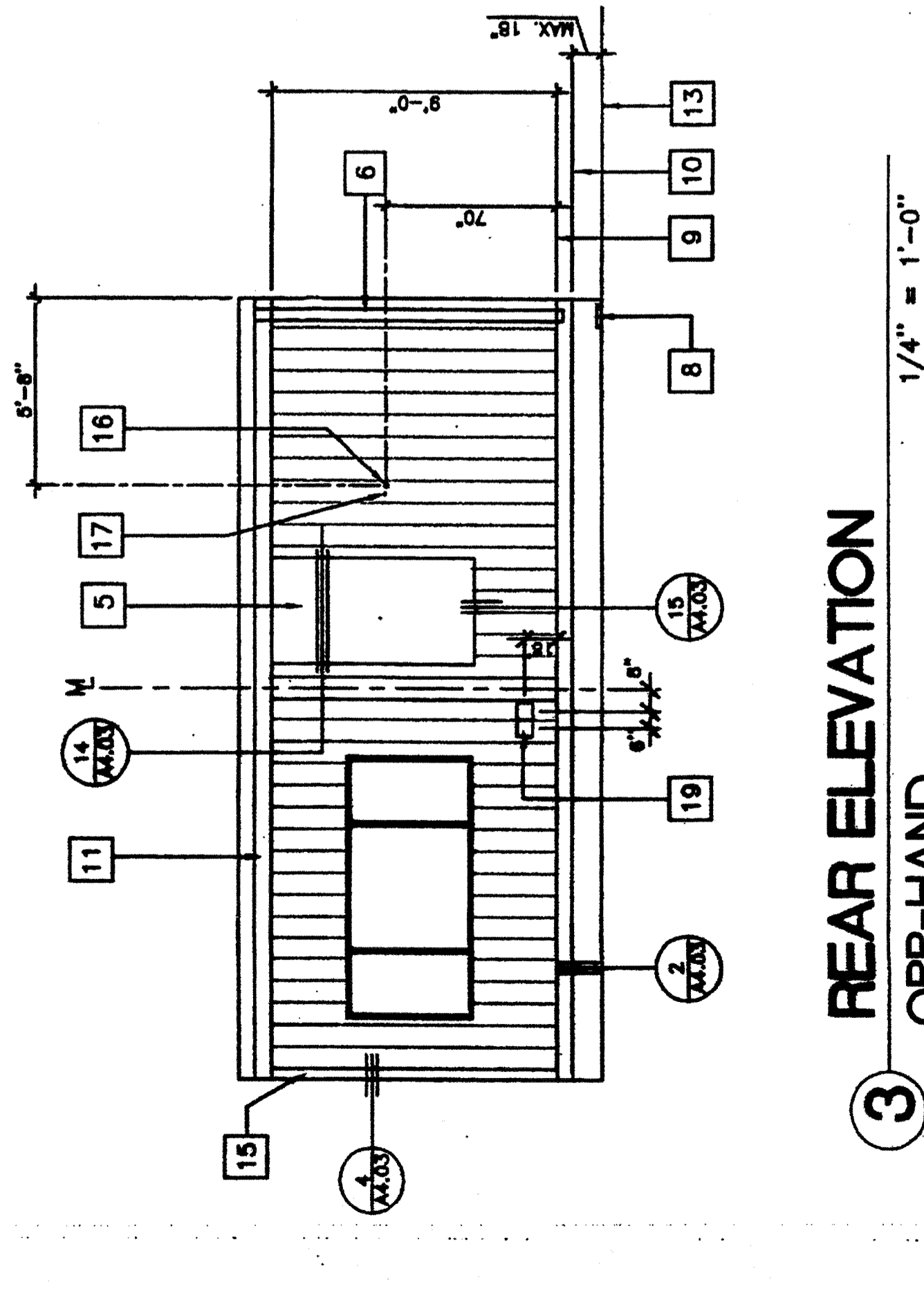
LEFT ELEVATION



RIGHT ELEVATION



**FRONT ELEVATION
OPP-HAND**



**REAR ELEVATION
OPP-HAND**

REVISIONS

Electrical Engineer's Seal
 Mechanical Engineer's Seal
 Architect's Seal
 PC Professional of Record Seal
MODTECH™
 2830 BARRETT AVENUE FAX (909) 943-4014
 PERRIS, CALIF. 92572 FAX (909) 940-0427
 PROJECT NUMBER: 4736
 WILLIAM SCOTTSMAN
 LICENSED TO REGISTERED ARCHITECT
 STATE OF CALIFORNIA
 LICENSE NO. 4736
 EXPIRES 07/07/04
 WILLIAM SCOTTSMAN
 ARCHITECT
 DATE: 07/07/03