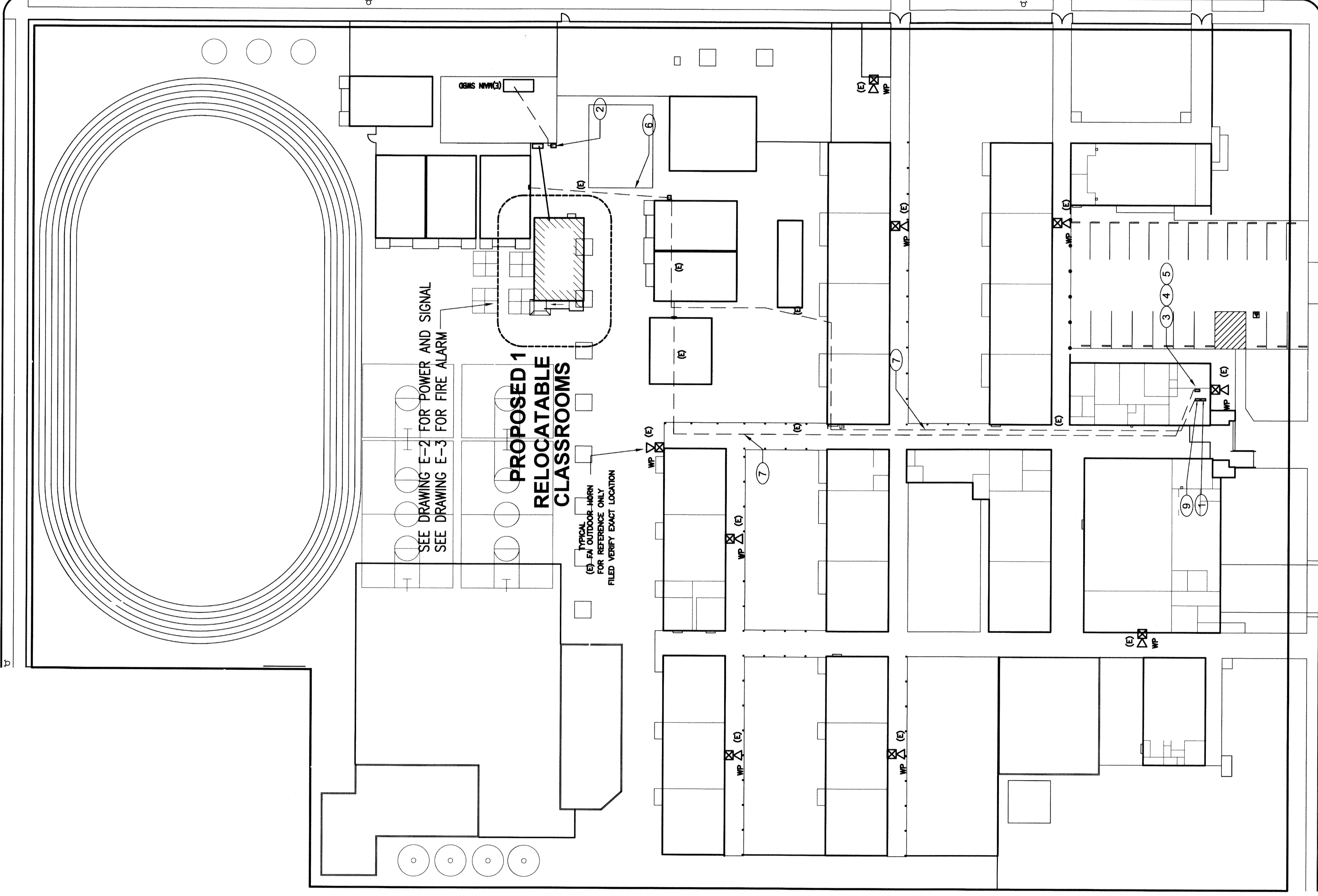


**SITE PLAN - ELECTRICAL**

SCALE : 1" = 30' - 0"



- ### SHEET NOTES
1. APPROXIMATE LOCATION FOR EXISTING ADDRESSABLE FIRE ALARM CONTROL PANELS AND NEW FIRE ALARM CONTROL PANELS SHALL BE SHOWN. PROVIDE CONNECTION TO NEW FIRE ALARM DEVICES PER PLANS. NEW FIRE ZONE MAP AND PROGRAM NEW DEVICES INFORMATION. MEASURE EXISTING AND PROPOSED DEVICES TO EXISTING AND NEW FIRE ZONE COORDINATES AND PROVIDE SAME TO OWNER AND FIRE DEPARTMENT. REPORT TO OWNER AND ENGINEER FOR REVIEW AND PLASTIC LAMINATED ONE COPY INSIDE EACH CABINET DOOR.
  2. APPROXIMATE LOCATION FOR NEW PHO MOUNT TRANSFORMER AND DISTRIBUTION PANEL. PROVIDE NEW CONDUIT, FEEDERS AND POWER DISTRIBUTION PANELS TO NEW RELOCATABLE CLASSROOM BUILDINGS PER PLANS. SEE SINGLE LINE DIAGRAM.
  3. APPROXIMATE LOCATION FOR EXISTING PDU/TELEPHONE EQUIPMENT IN ADMIN OFFICE. PROVIDE NEW CABLE AND CONNECTION FOR NEW SIGNAL DEVICES PER PLANS.
  4. APPROXIMATE LOCATION FOR EXISTING COMPUTER MFP SERVER EQUIPMENT IN ADMIN OFFICE. PROVIDE NEW CABLE AND CONNECTION FOR NEW SIGNAL DEVICES PER PLANS.
  5. APPROXIMATE LOCATION FOR EXISTING MASTER NETWORK ALARM EQUIPMENT IN ADMIN OFFICE. PROVIDE NEW CABLE AND CONNECTION FOR NEW SIGNAL DEVICES PER PLANS.
  6. (E) I/O SIGNAL CONDUITS. FIELD VERIFY LOCATION. PULL IN NEW SIGNAL CONDUITORS PER PLANS. SEE DRAWING E-2 & E-3 FOR MORE INFORMATION.
  7. (E) EIT SURFACE MOUNT SIGNAL CONDUITS. PULL IN NEW SIGNAL CONDUITORS PER PLANS. SEE RESET DIAGRAMS.

(E) --- INDICATE EXISTING CONDUIT AND WORKS. FOR REFERENCE ONLY. FIELD VERIFY AS REQUIRED.

### PROJECT NOTES

1. SOURCE OF POWER HAS BEEN INVESTIGATED AND IS ADEQUATE FOR THE ADDITIONAL LOAD.
2. THE INSPECTOR IS TO WITNESS AND VERIFY GROUNDING.
3. CONTRACTOR TO MONITOR EXISTING FIRE ALARM SYSTEM IF IT IS INTERRUPTED OR DISCONNECTED.

### MEP COMPONENT ANCHORAGE NOTES

ALL MECHANICAL, PLUMBING, AND ELECTRICAL COMPONENTS SHALL BE ANCHORED AND DETAILLED FOR THE DETAILS ON THE PLAN. MECHANICAL AND ELECTRICAL COMPONENTS SHALL BE ANCHORED TO THE STRUCTURE IN ACCORDANCE WITH THE FOLLOWING NOTES:

1. ALL PERMANENT EQUIPMENT AND COMPONENTS.
2. EQUIPMENT OR SERVICE EQUIPMENT THAT IS PERMANENTLY ATTACHED (E.G. HANG) TO THE BUILDING STRUCTURE.
3. SERVICE EQUIPMENT WHICH IS SECURED IN ONE PLACE FOR MORE THAN 6 HOURS AND HEAVIER THAN 40 POUNDS ARE REQUIRED TO BE ANCHORED WITH TEMPORARY ATTACHMENTS.

THE ATTACHMENT OF THE FOLLOWING MECHANICAL AND ELECTRICAL COMPONENTS SHALL BE PERMANENTLY ATTACHED TO THE STRUCTURE. COMPONENTS TO BE PERMANENTLY ATTACHED TO THE STRUCTURE SHALL HAVE FLEXIBLE CONNECTIONS PROVIDED BETWEEN THE COMPONENTS AND THE STRUCTURE.

- A. MECHANICAL COMPONENTS SHALL BE PERMANENTLY ATTACHED TO THE STRUCTURE BY MEANS OF ANCHORS LOCATED 4 FEET OR LESS ABOVE THE ANCHOR POINT ON EACH SIDE OF THE COMPONENT.
- B. COMPONENTS HEAVIER THAN 20 POUNDS OR IN THE CASE OF ANCHORED SYSTEMS, LESS THAN 8 POUNDS PER FOOT, SHALL BE SECURED FROM A POINT OF FORCE OF HANG FROM A WALL.

FOR THESE ELEMENTS THAT DO NOT REQUIRE DETAILS ON THE APPROVED DRAWINGS, THE INSTALLATION SHALL BE SUBJECT TO THE APPROVED DRAWINGS. THE INSTALLATION SHALL BE SUBJECT TO THE APPROVED DRAWINGS. THE INSTALLATION SHALL BE SUBJECT TO THE APPROVED DRAWINGS. THE INSTALLATION SHALL BE SUBJECT TO THE APPROVED DRAWINGS.

### PIPING, DUCTWORK, AND ELECTRICAL DISTRIBUTION SYSTEM BRACING NOTE

PIPING, DUCTWORK, AND ELECTRICAL DISTRIBUTION SYSTEMS SHALL BE BRACED TO COMPLY WITH THE FORCE AND DISPLACEMENTS PRESCRIBED IN ASCE 7-10 SECTION 13.3 AS SHOWN IN ASCE 7-10 SECTION 13.3.3, TABLE 13.3-A, TABLE 13.3-B, SECTION 13.3.4, TABLE 13.3-1, TABLE 13.3-2, TABLE 13.3-3, TABLE 13.3-4, TABLE 13.3-5, TABLE 13.3-6, TABLE 13.3-7, TABLE 13.3-8, TABLE 13.3-9, TABLE 13.3-10, TABLE 13.3-11, TABLE 13.3-12, TABLE 13.3-13, TABLE 13.3-14, TABLE 13.3-15, TABLE 13.3-16, TABLE 13.3-17, TABLE 13.3-18, TABLE 13.3-19, TABLE 13.3-20, TABLE 13.3-21, TABLE 13.3-22, TABLE 13.3-23, TABLE 13.3-24, TABLE 13.3-25, TABLE 13.3-26, TABLE 13.3-27, TABLE 13.3-28, TABLE 13.3-29, TABLE 13.3-30, TABLE 13.3-31, TABLE 13.3-32, TABLE 13.3-33, TABLE 13.3-34, TABLE 13.3-35, TABLE 13.3-36, TABLE 13.3-37, TABLE 13.3-38, TABLE 13.3-39, TABLE 13.3-40, TABLE 13.3-41, TABLE 13.3-42, TABLE 13.3-43, TABLE 13.3-44, TABLE 13.3-45, TABLE 13.3-46, TABLE 13.3-47, TABLE 13.3-48, TABLE 13.3-49, TABLE 13.3-50, TABLE 13.3-51, TABLE 13.3-52, TABLE 13.3-53, TABLE 13.3-54, TABLE 13.3-55, TABLE 13.3-56, TABLE 13.3-57, TABLE 13.3-58, TABLE 13.3-59, TABLE 13.3-60, TABLE 13.3-61, TABLE 13.3-62, TABLE 13.3-63, TABLE 13.3-64, TABLE 13.3-65, TABLE 13.3-66, TABLE 13.3-67, TABLE 13.3-68, TABLE 13.3-69, TABLE 13.3-70, TABLE 13.3-71, TABLE 13.3-72, TABLE 13.3-73, TABLE 13.3-74, TABLE 13.3-75, TABLE 13.3-76, TABLE 13.3-77, TABLE 13.3-78, TABLE 13.3-79, TABLE 13.3-80, TABLE 13.3-81, TABLE 13.3-82, TABLE 13.3-83, TABLE 13.3-84, TABLE 13.3-85, TABLE 13.3-86, TABLE 13.3-87, TABLE 13.3-88, TABLE 13.3-89, TABLE 13.3-90, TABLE 13.3-91, TABLE 13.3-92, TABLE 13.3-93, TABLE 13.3-94, TABLE 13.3-95, TABLE 13.3-96, TABLE 13.3-97, TABLE 13.3-98, TABLE 13.3-99, TABLE 13.3-100.

**Integrated Designs**  
 ARCHITECTURE · ENGINEERING · INTERIOR DESIGN · CONSTRUCTION MANAGEMENT  
 by SOMAM, Inc.

0011 N. Ravens, Suite 130 - Fresno, California 93710  
 Phone (559) 436-0861 Fax (559) 436-0857  
 www.integrateddesigns.com

**1 RELOCATABLE CLASSROOMS**  
 FRANKLIN ELEMENARY SCHOOL  
 BAKERSFIELD CITY SCHOOL DISTRICT  
 2400 TRUXTUN AVE., BAKERSFIELD, CA

SITE PLAN - ELECTRICAL

Issue Date: 00/00/16  
 Date: 7/21/16  
 Designer: J CHONG  
 DR CHONG  
 PO: CUM

Agency Approval Stamp:  
 TRACKING # DSA-TRACKING INC

Job No.: 5229  
 Sheet No.: E-1

Professional Engineer Seal:  
 JOHN S. CHONG  
 E 14419  
 Exp. 4/30/2016  
 2071 E. DEANER AVE. FRESNO CA 93710  
 (559) 305-2299 - FAX 557-2424  
 jchong@esee.com