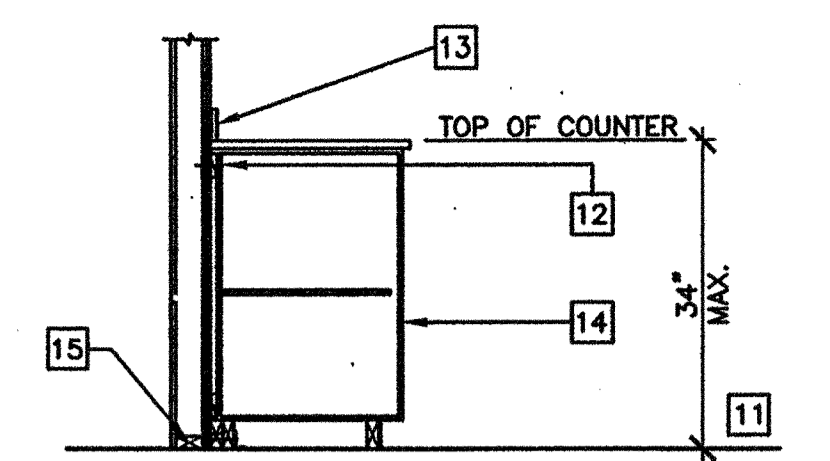
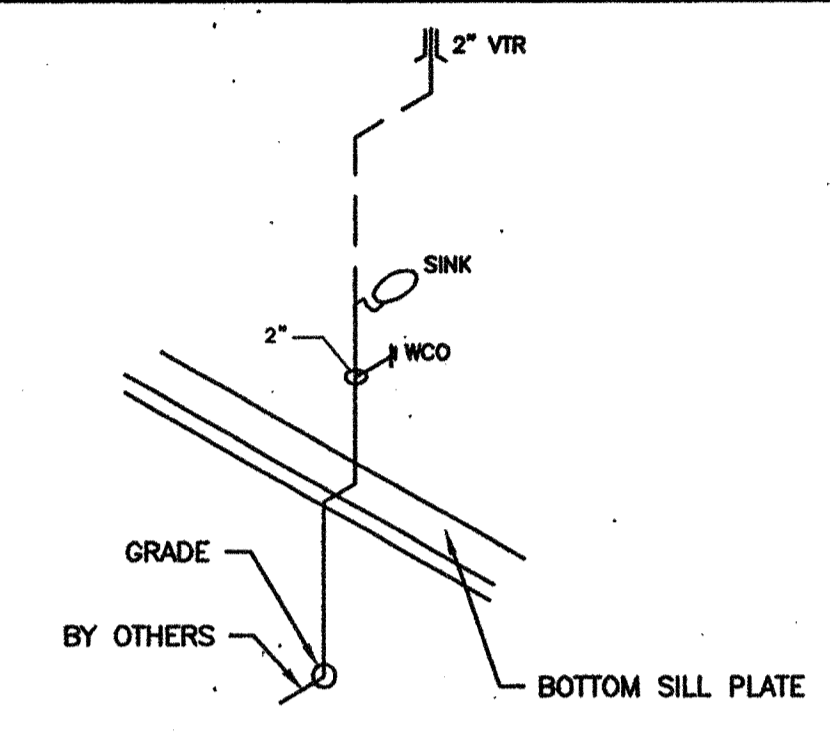


FLOOR PLAN
OPP-HAND
SCALE: 1/4" = 1'-0"

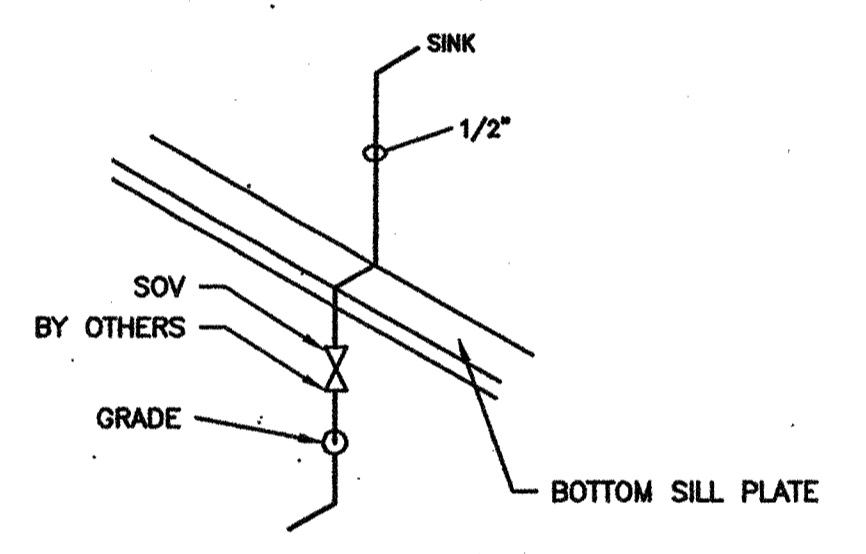


NOTES:
1. SEE PLANS AND ELEVATIONS FOR EACH SPECIFIC DESIGN.
2. REMOVE TOE KICK AND BASE FOR ACCESSIBLE CONDITION
3. PROVIDE U SHAPED WIRE PULLS AT ALL ACCESSIBLE CASEWORK OR EQUAL.

SCALE: NTS (OPTIONAL)
BASE CABINET ANCHORAGE 1



SCALE: NTS (OPTIONAL)
SINK CABINET WASTE 2



SCALE: NTS (OPTIONAL)
SINK CABINET COLD WATER SUPPLY 3

- ### KEY NOTES
- 1 ROOF OVERHANG
 - 2 HVAC UNIT (HV)
 - 3 2 - 8"x4' PORCELAIN STEEL MARKER BOARDS (SEE SPEC'S FOR TYPE)
 - 4 FINISH FLOORING (FIN)
 - 5 INTERIOR FINISH (FIN)
 - 6 FIRE EXTINGUISHER - 5 LBS DRY CHEMICAL WITH 2A-10BC UL RATING WALL MOUNTED BRACKET, HANDLE AT 48" AFF
 - 7 MODLINE (M)
 - 8 ELECTRICAL PANEL
 - 9 RAMP/LANDING (RMP) SEE RAMP DRAWINGS
 - 10 SIGNAGE PROVIDED AND INSTALLED BY DISTRICT PRIOR TO OCCUPANCY, SEE A6.02
 - 11 FINISH FLOOR
 - 12 4"x22 GA CONTINUOUS METAL STRAPS WITH #14 STMS AT 24" OC
 - 13 BACK SPLASH
 - 14 BASE CABINET
 - 15 BOTTOM PLATE
 - 16 COLD WATER P.O.C. SEE DETAIL# 3
 - 17 WASTE P.O.C. SEE DETAIL# 2
 - 18 CLASSROOM SINK, TYP. SEE A5.02
SINK: CRAC-ADA-1725-A-GR
FAUCET: CHICAGO 350. BUBBLER: JSB 10

- ### NOTES
1. METAL TAG ON ALL MODULES. MECHANICALLY ATTACHED TO REAR EXTERIOR OF BUILDING SHOW D.S.A. APPLICATION NUMBER. MANUFACTURER'S NAME AND SERIAL NUMBER.
 2. METAL TAG MIN. 3 1/2"x1 1/2" STAMPED METAL I.D. W/
1. OPSC BUILDING NUMBER
2. DESIGN WIND LOAD
3. DESIGN ROOF LOAD
 3. PROVIDE MIN. 3 1/2"x1 1/2" METAL TAG INSTALLED INSIDE THE ELECTRICAL PANEL SHOWING OPSC NUMBER AND DSA NUMBER.
 3. BLDG. MANUFACTURER TO VERIFY W/ CUSTOMER IF SINK AND CABINET OPTION APPLIES.

IDENTIFICATION STAMP
DIV. OF THE STATE ARCHITECT
OFFICE OF REGULATION SERVICES
04 105455
ADP PLS R SS W/S
DATE JUL 14 2003

~~IDENTIFICATION STAMP
DIV. OF THE STATE ARCHITECT
OFFICE OF REGULATION SERVICES
04 105455
ADP PLS R SS W/S
DATE JUL 14 2003~~

IDENTIFICATION STAMP
DIV. OF THE STATE ARCHITECT
OFFICE OF REGULATION SERVICES
04 105455
ADP PLS R SS W/S
DATE JUL 14 2003

REVISIONS	DESCRIPTION
1	
2	
3	
4	
5	

Desktop Engineer's Seal
Mechanical Engineer's Seal
PC Professional of Record Seal
Architect's Seal

PC
CBC 2001
IDENTIFICATION STAMP
DIV. OF THE STATE ARCHITECT
OFFICE OF REGULATION SERVICES
PC-04
104796
ADP PLS R SS W/S
DATE 6/12/03

MODTECHTM
2830 BARRETT AVENUE FAX (909) 943-4014
PERRIS, CALIF. 92572 FAX (909) 940-0427

PROJECT NUMBER: 4736
WILLIAM SCOTTSMAN
FLOOR PLAN

© MODTECH, INC. 2002
ALL RIGHTS RESERVED

DRAWN BY: GL
DATE: 07/07/03
CHECKED BY:
DATE:
MODTECH Index No.
A1.1

PROJECT NO. 4736