

KEY NOTES

- 1 TS 2"x2"x14 GA
- 2 TS 1 1/2"x1 1/2"x14 GA (Fy = 39KSI), ROUNDED OR BEVELLED AT CORNERS
- 3 TS 1"x1"x10 GA WITH 1/4" CHAMFER
- 4 2"x8" PRESSURE TREATED SILL PLATE
- 5 2"x4"x12 GA BASE PLATE WITH (2) 1/4"x1" LAGS
- 6 SKIRTING: PLYWOOD TO MATCH BUILDING SKING. BLOCK ALL EDGES. ATTACH WITH 8d AT 6" OC LAGS AND 12" OC FIELD. AT EDGE CONNECTION TO TUBE SHELL USE #14x2" TEK SCREWS AT 6" OC
- 7 12 GA METAL DECK: NON-SLIP SURFACE. DESIGN COEFFICIENT OF FRICTION GREATER THAN 0.8. MAINTAINABLE FOR 1 YEAR
- 8 EXISTING BUILDING
- 9 6"x10"x12 GA BASE PLATE AT RAMP IN
- 10 LOWER LANDING BY DISTRICT
- 11 RAMP BY MODTECH
- 12 FLUSH TRANSITION
- 13 6"x12"x10 GA PLATE WITH (2) 1/4"x3" LAGS TO STRUCTURAL FRAME OF BUILDING
- 14 3"x1"x3'-0"x10 GA BENT PLATE
- 15 2"x4"x 1/8" PLATE
- 16 TS 1 1/2"x1 1/2"x14 GA HANDRAIL - CONTINUOUS AND UNINTERRUPTED, ROUNDED OR BEVELLED AT CORNERS
- 17 TS 1"x1"x16 GA RAIL SUPPORT
- 18 LINE OF RAMP/LANDING ABOVE
- 19 RAMP EXTENSION FRAME
- 20 6"x10 GA CONTINUOUS PLATE WITH 1/4"x2" H.K. SCREWS AT 9" OC INTO WOOD OR FOUNDATION BLOCKS OR #14x2" TEK SCREWS INTO STEEL AT 9" OC
- 21 NOTCH BOTTOM PLATE (AND SILL) AS REQUIRED TO CLEAR RAMP TOE. MAX NOTCH 1 1/2"x4'-0" LONG.
- 22 NOTCH BOTTOM PLATE (AND SILL) AS REQUIRED TO CLEAR RAMP TOE. MAX NOTCH 1 1/2"x4'-0" LONG.
- 23 LINE OF STAIR OPTION - 12.15/R1.02

IDENTIFICATION STAMP
 DIV. OF THE STATE ARCHITECT
 OFFICE OF REGULATION SERVICES
 04 104310
 AC 11 FLS 85/202
 DATE JUN 06 2002

IDENTIFICATION STAMP
 DIV. OF THE STATE ARCHITECT
 OFFICE OF REGULATION SERVICES
 04 104082
 AC 11 FLS 85/202
 DATE JUN 06 2002

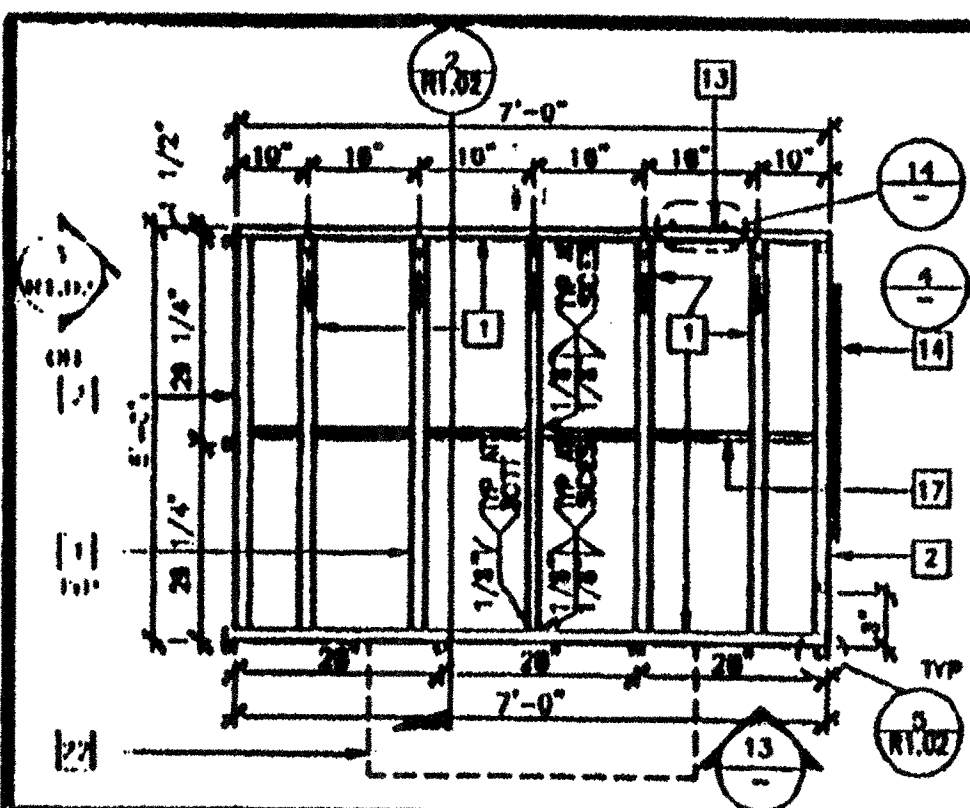
IDENTIFICATION STAMP
 DIV. OF THE STATE ARCHITECT
 OFFICE OF REGULATION SERVICES
 04 104946
 AC 11 FLS 85/202
 DATE MAY 23 2002

IDENTIFICATION STAMP
 DIV. OF THE STATE ARCHITECT
 OFFICE OF REGULATION SERVICES
 04 104082
 AC 11 FLS 85/202
 DATE JUN 06 2002

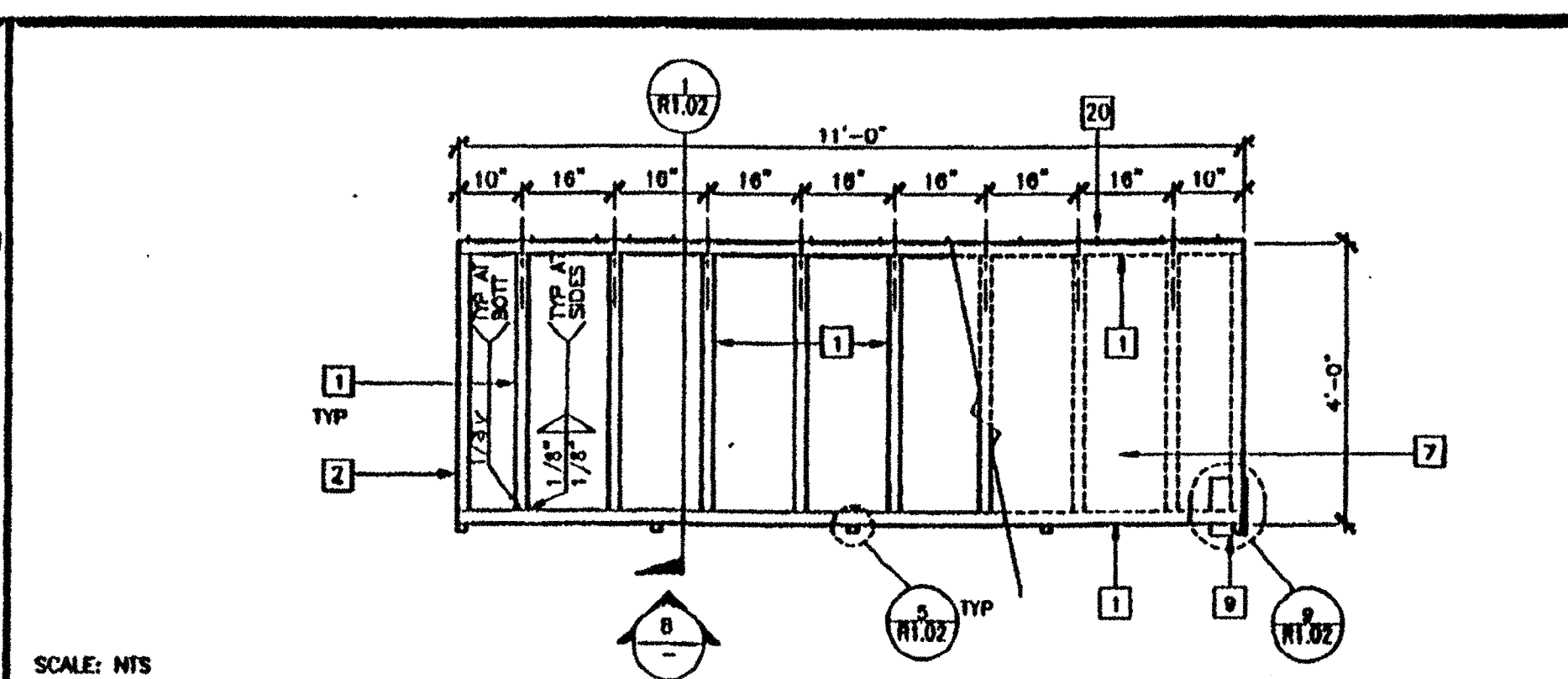
IDENTIFICATION STAMP
 DIV. OF THE STATE ARCHITECT
 OFFICE OF REGULATION SERVICES
 04 101884
 AC 11 FLS 85/202
 DATE MAR 09 2002

NOTES

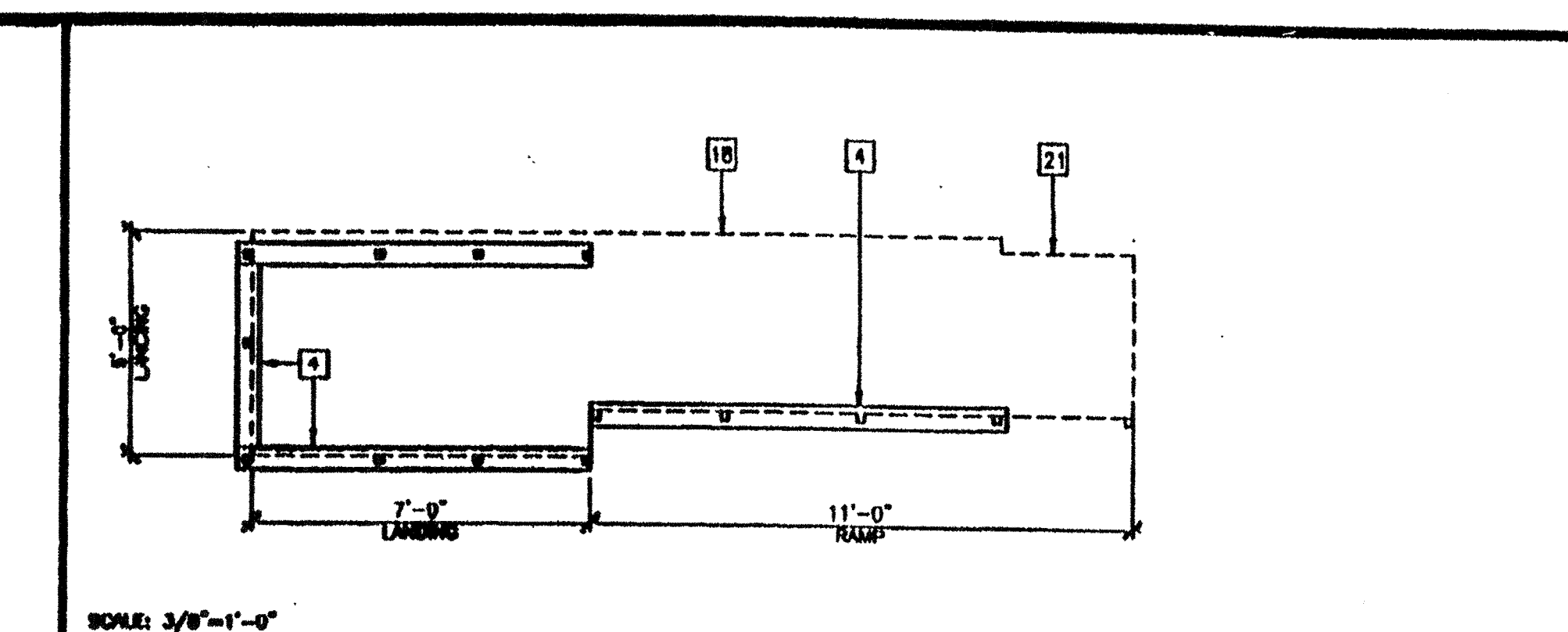
1. RAMPS: RAMPS SHALL NOT SLOPE MORE THAN 1" IN 12"
2. HANDRAILS: HANDRAILS AT BOTH SIDES OF RAMP AT 34" HIGHEST.
3. SURFACE: LANDING & RAMP TO HAVE NON-SLIP SURFACE (AMCOR GRIP II AS MANUFACTURED BY AMERICAN CHEMICAL COMPANY (OR EQUAL))
4. GROUNDING: PROVIDE GROUNDING OF RAMP TO BUILDING FRAME WITH #8 COPPER TO BOTH GROUND LUGS.
5. ARCHITECT SITE/RAMP/LANDING PLANNING: DUE TO VARYING SITE CONDITIONS THE MAXIMUM HEIGHT OF FINISH FLOOR FROM GRADE IS 28". THEREFORE IT IS POSSIBLE THAT THE ACCESS RAMP ATTACHED TO THE BUILDING COULD BE 20'-0" AT A SLOPE OF 1:12. ARCHITECT MUST TAKE INTO ACCOUNT THAT THE RAMP SUPPLIED BY MODTECH INC. IS 11'-0" AT A SLOPE OF 1:12. THEREFORE THE ARCHITECT WILL HAVE TO DESIGN AND PROVIDE DETAILS OF RAMP EXTENSIONS AND BOTTOM LANDING DEPENDING ON PARTICULAR SITE CONDITIONS. IN NO WAY IS MODTECH INC. RESPONSIBLE FOR ANY RAMP EXTENSION EXCEEDING THE ORIGINAL PLAN AS SHOWN ON THIS SHEET
6. ALL 1 1/4" AND 1 1/2" TUBE STEEL TO BE OF ASTM A500 GRADE A STEEL (Fy = 38 KSI) @ 03



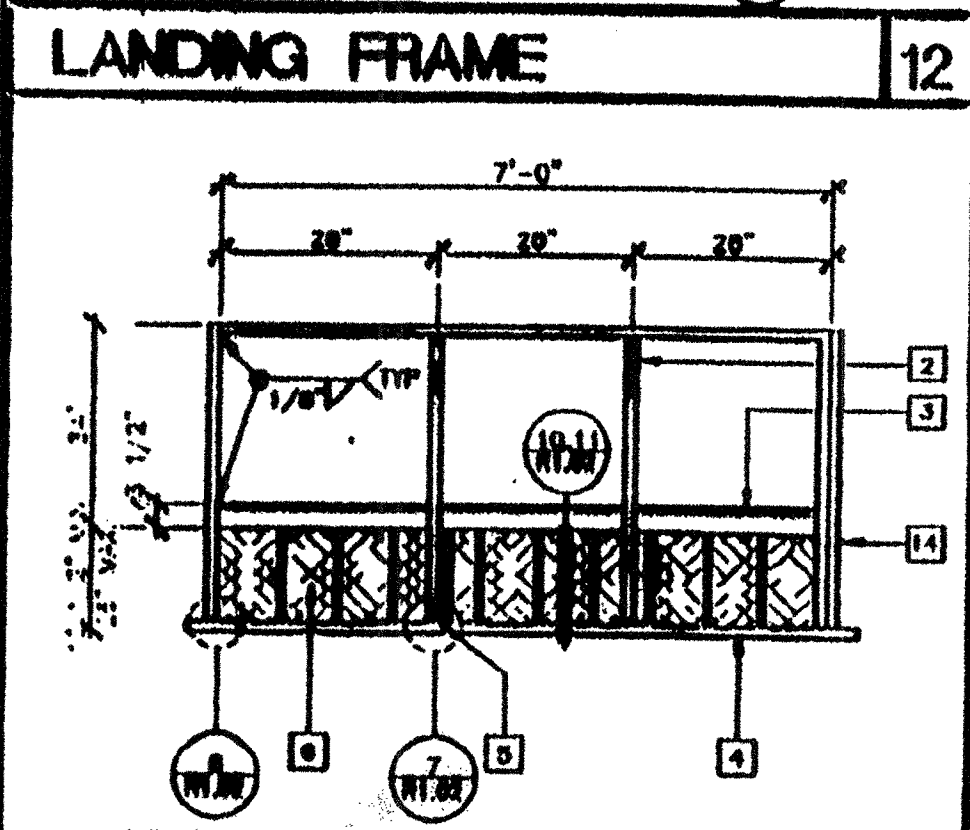
LANDING FRAME 12 SCALE: NTS



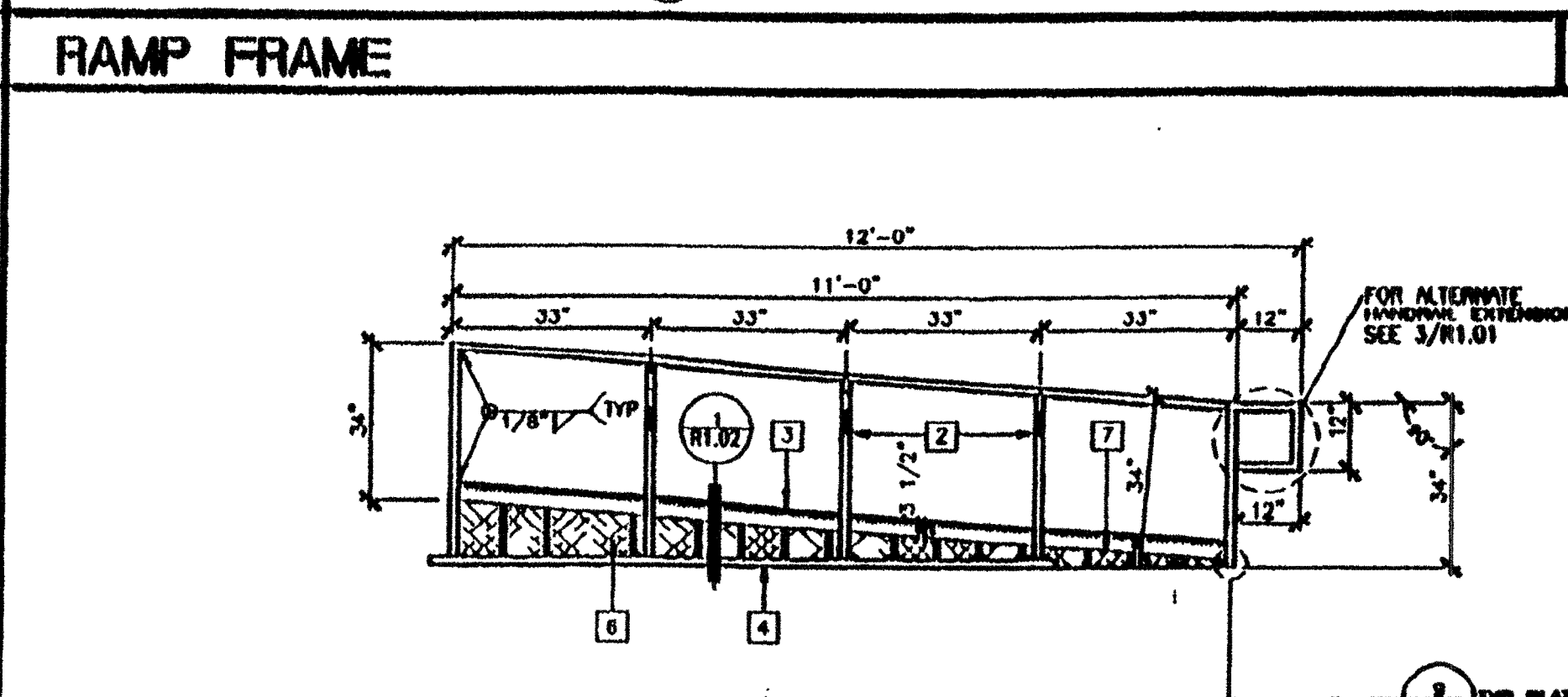
RAMP FRAME 7 SCALE: NTS



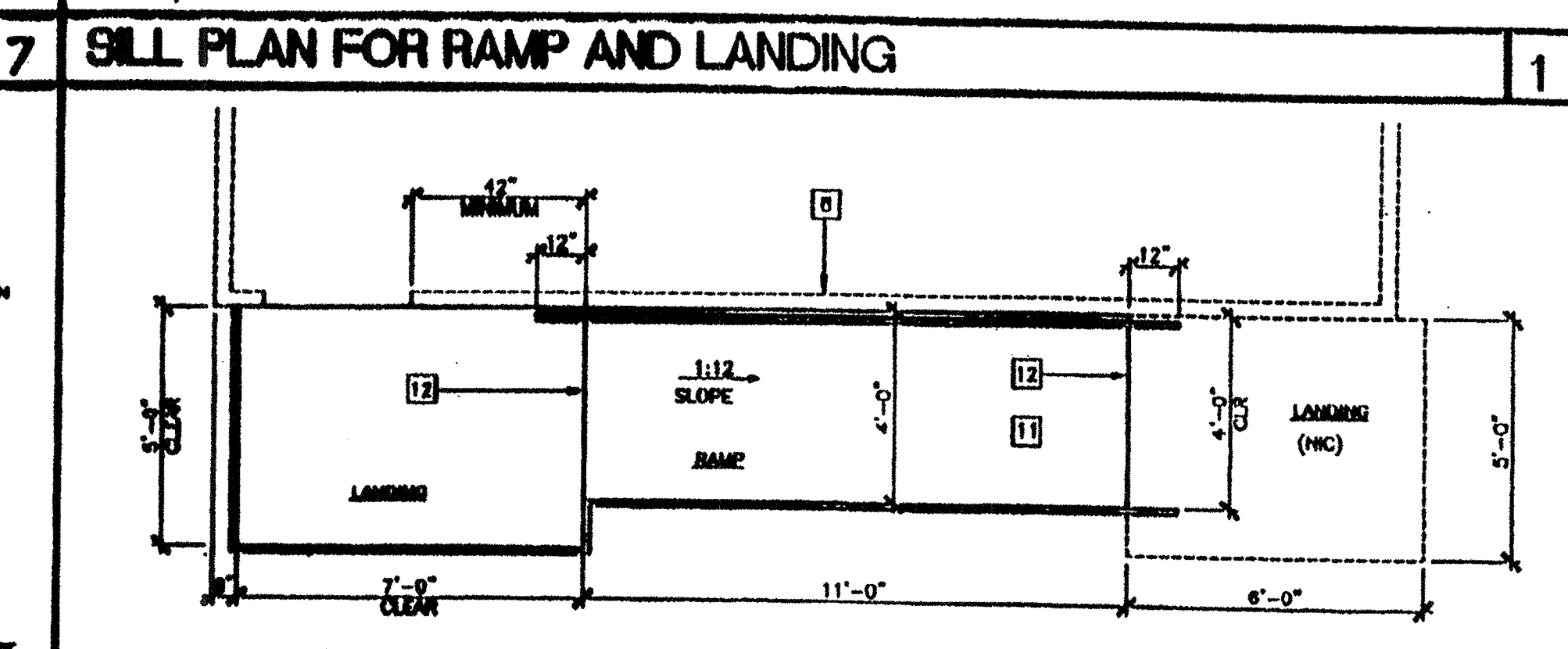
SILL PLAN FOR RAMP AND LANDING 1 SCALE: 3/8"=1'-0"



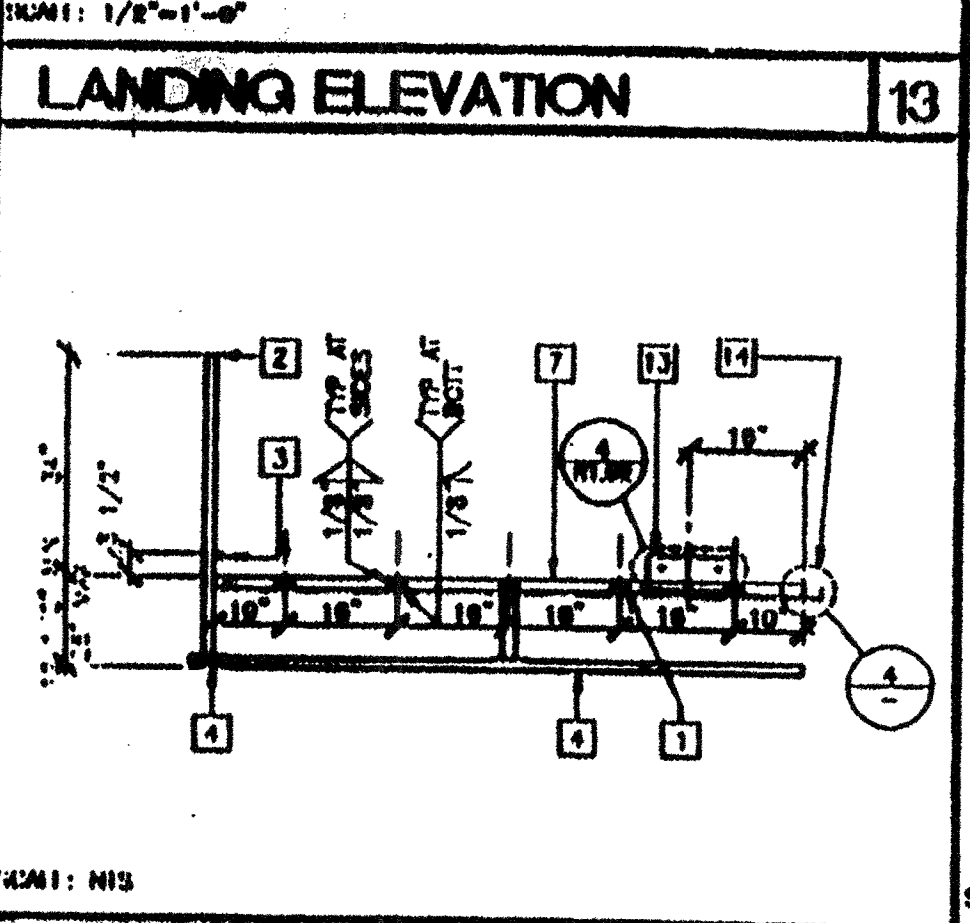
LANDING ELEVATION 13 SCALE: 1/2"=1'-0"



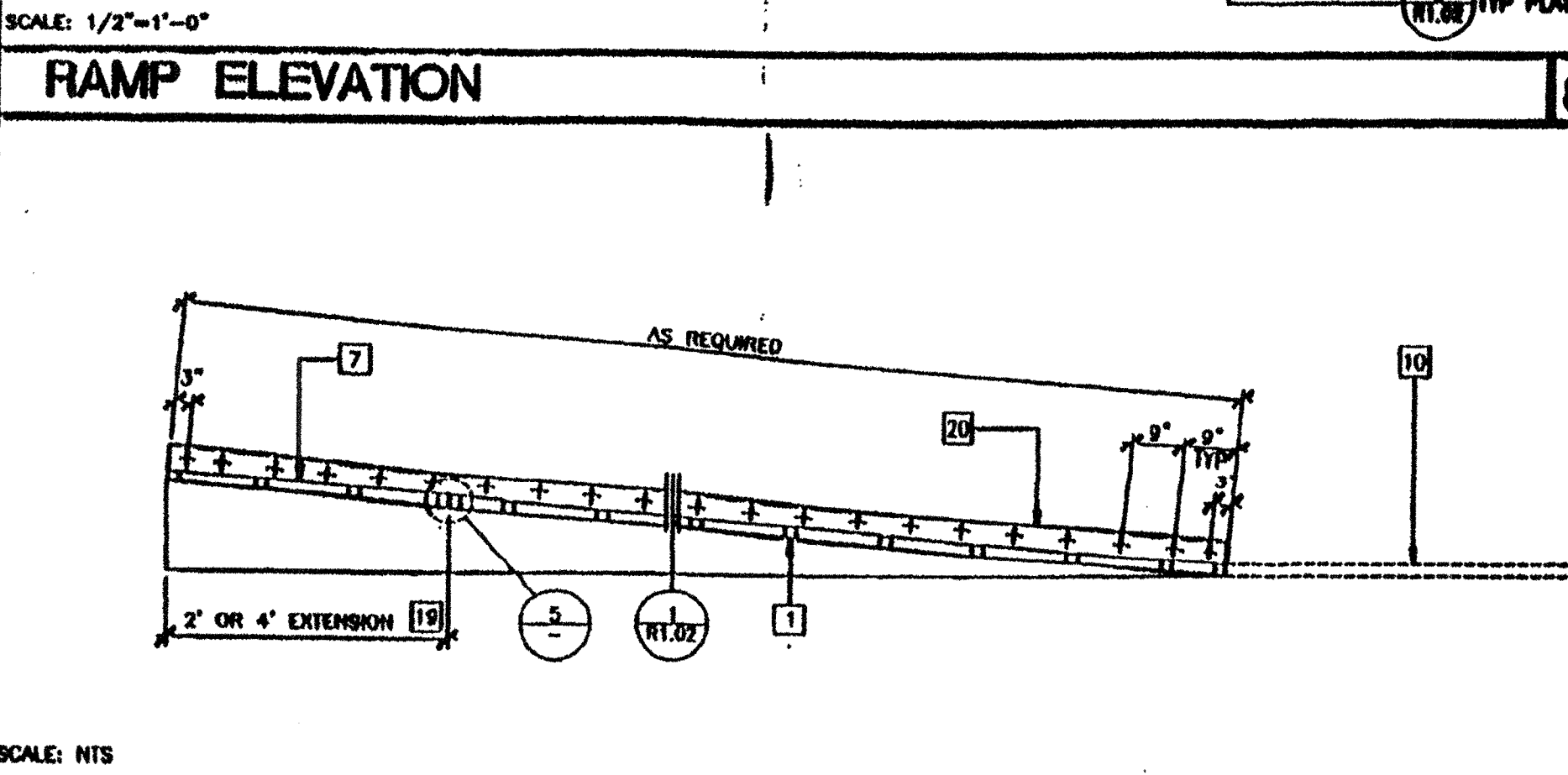
RAMP ELEVATION 8 SCALE: 1/2"=1'-0"



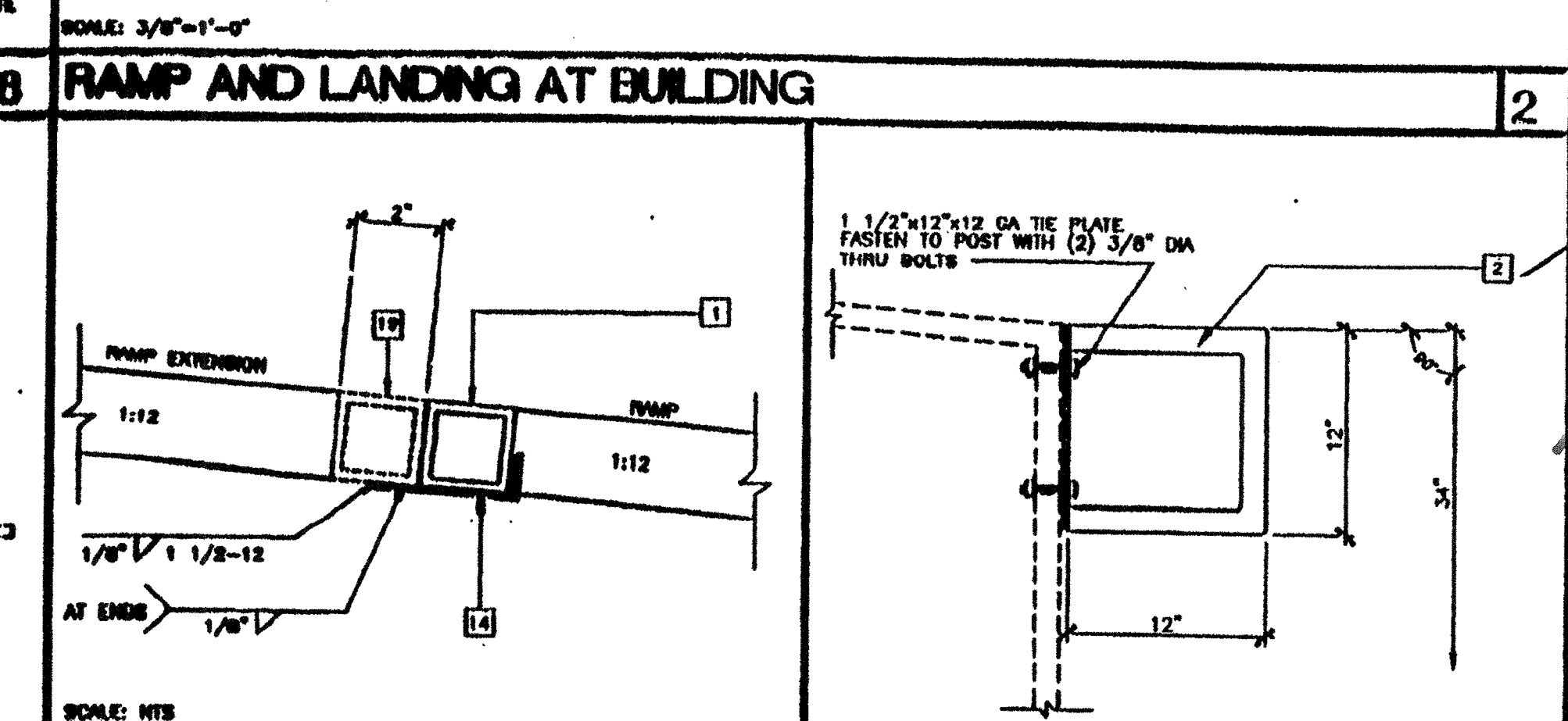
RAMP AND LANDING AT BUILDING 2 SCALE: 3/8"=1'-0"



SECTION AT LANDING 14 SCALE: NTS



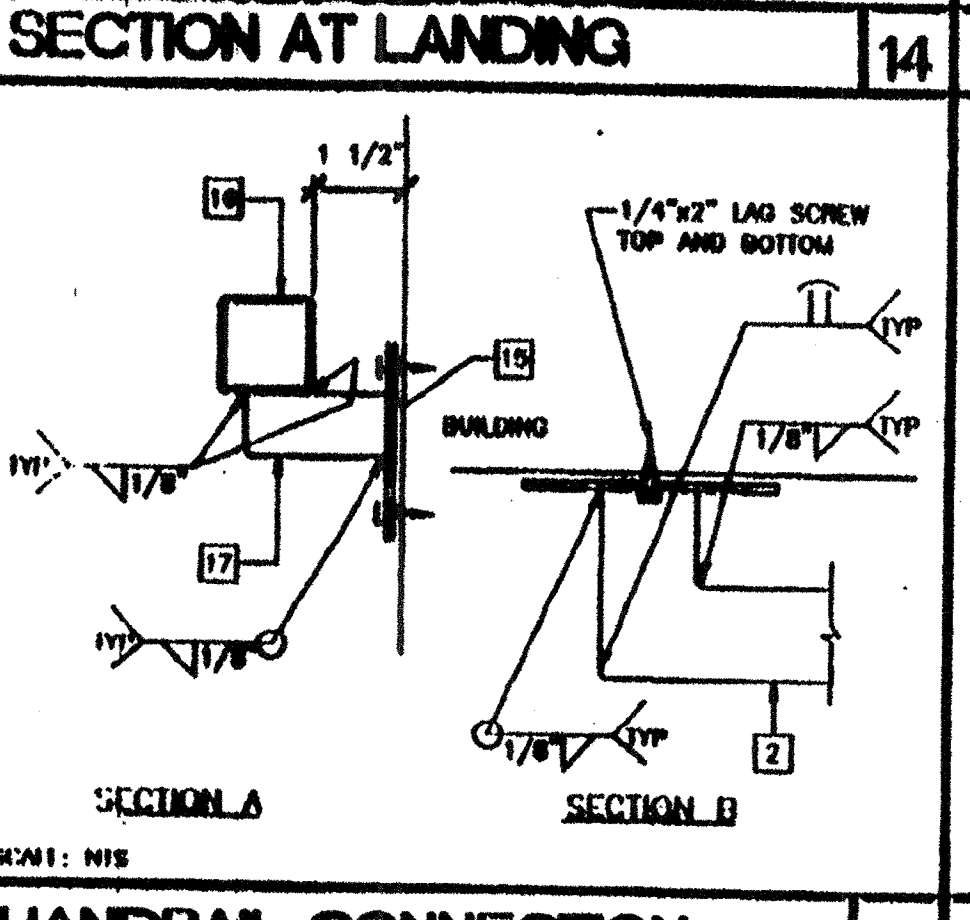
LONGITUDINAL SECTION AT RAMP 9 SCALE: NTS



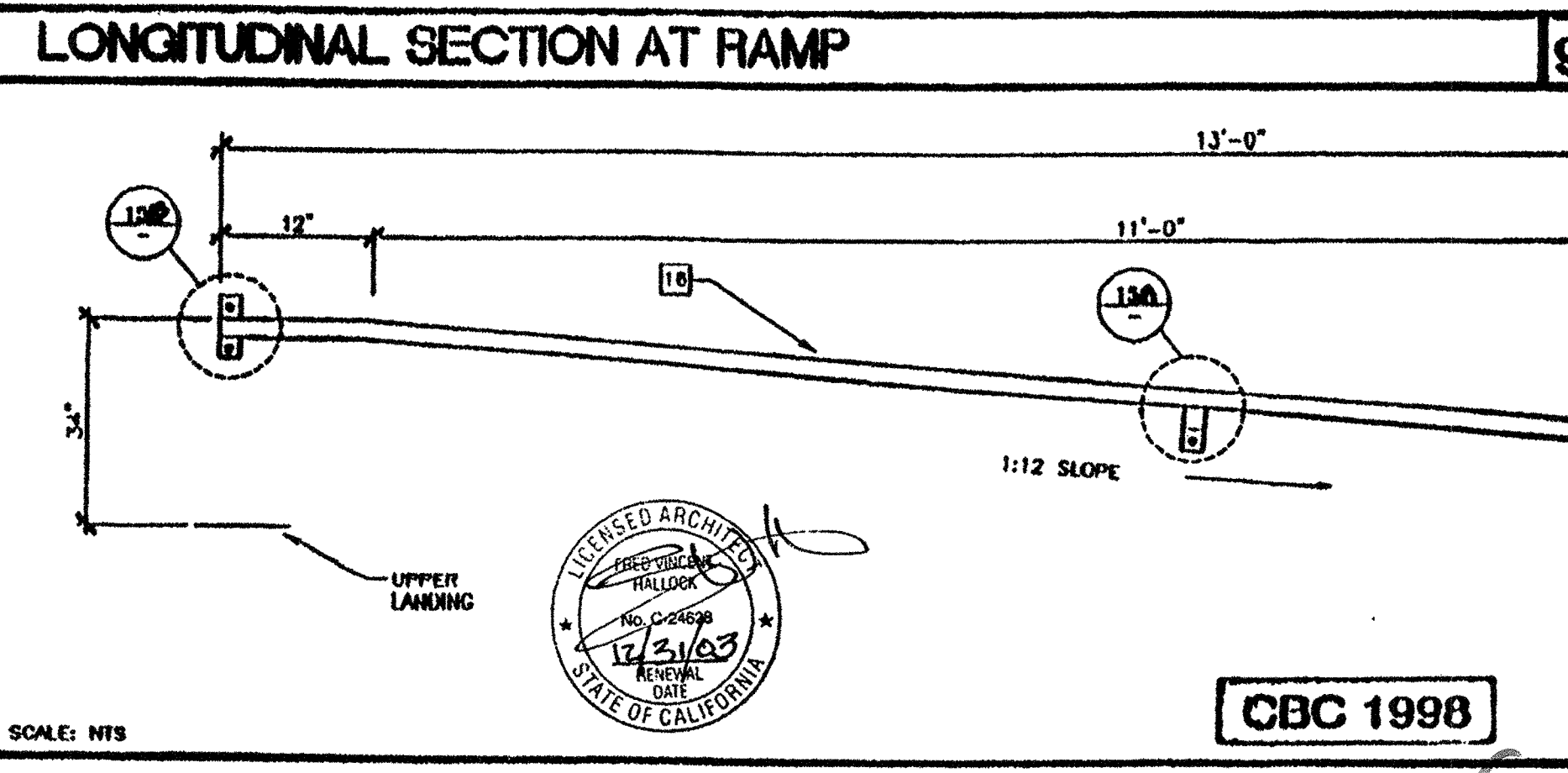
RAMP EXTENSION TO RAMP 5 SCALE: NTS



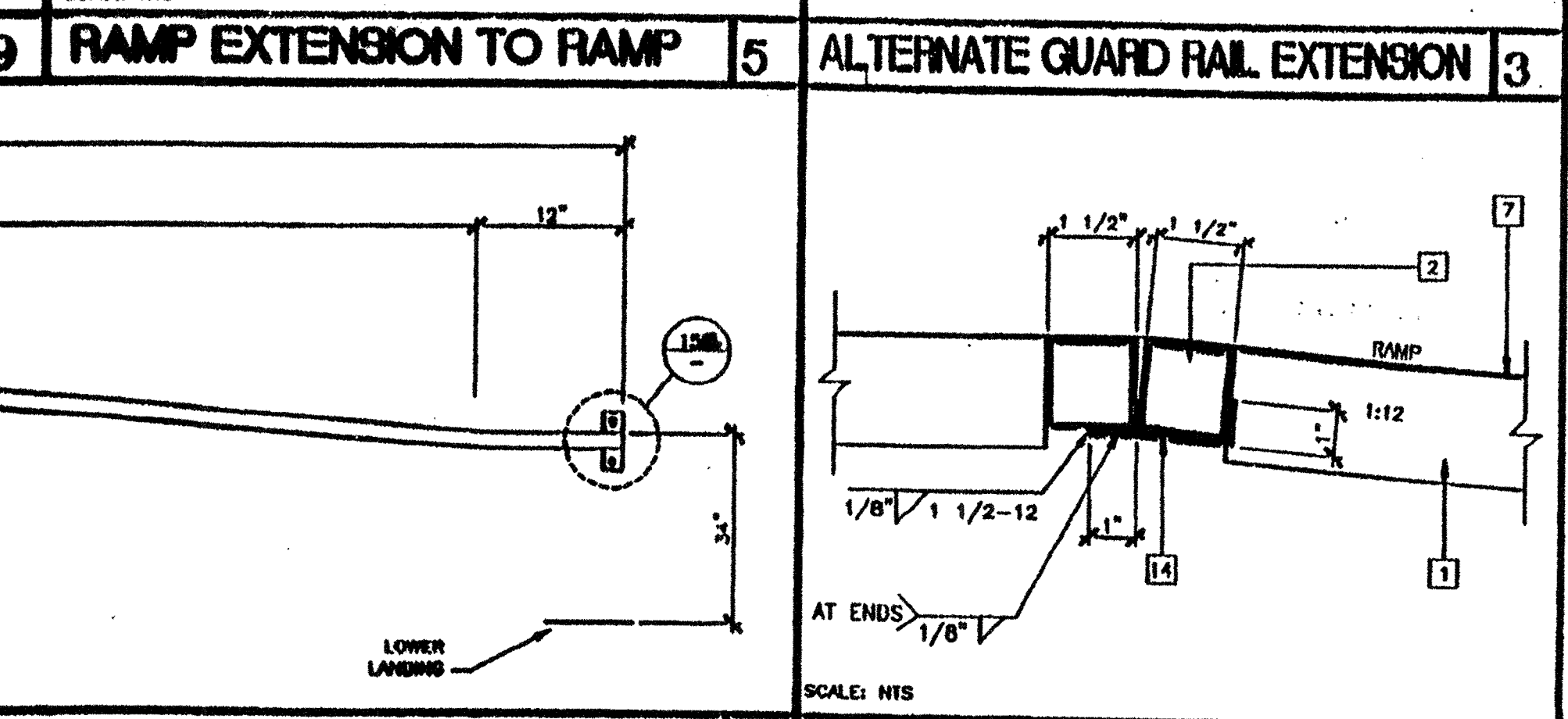
ALTERNATE GUARD RAIL EXTENSION 3 SCALE: NTS



HANDRAIL CONNECTION 15 SCALE: NTS



HANDRAIL ATTACHED TO BUILDING (OPTIONAL) 15 SCALE: NTS



RAMP AT LANDING 4 SCALE: NTS

REVISIONS

NO.	DESCRIPTION	DATE

CBC 1998

REGISTERED ARCHITECT
 STATE OF CALIFORNIA
 No. 25663
 EXPIRES 12/31/03

PC
 DIV. OF THE STATE ARCHITECT
 OFFICE OF REGULATION SERVICES
 101419
 DATE OCT 15 2002

MODTECH INC.
 2830 BARRETT AVENUE
 PERRIS, CALIF. 92572
 PH (909) 943-4014
 FAX (909) 940-0427

PROJECT NUMBER: 4087
 WILLIAMS SCOTSMAN
 © MODTECH, INC. 1999

RAMP/LANDING 11" RAMP

DRAWN BY: WJG
 DATE: 3/0/02
 CHECKED BY:
 DATE:

R1.00