

ELECTRICAL PANEL SCHEDULE

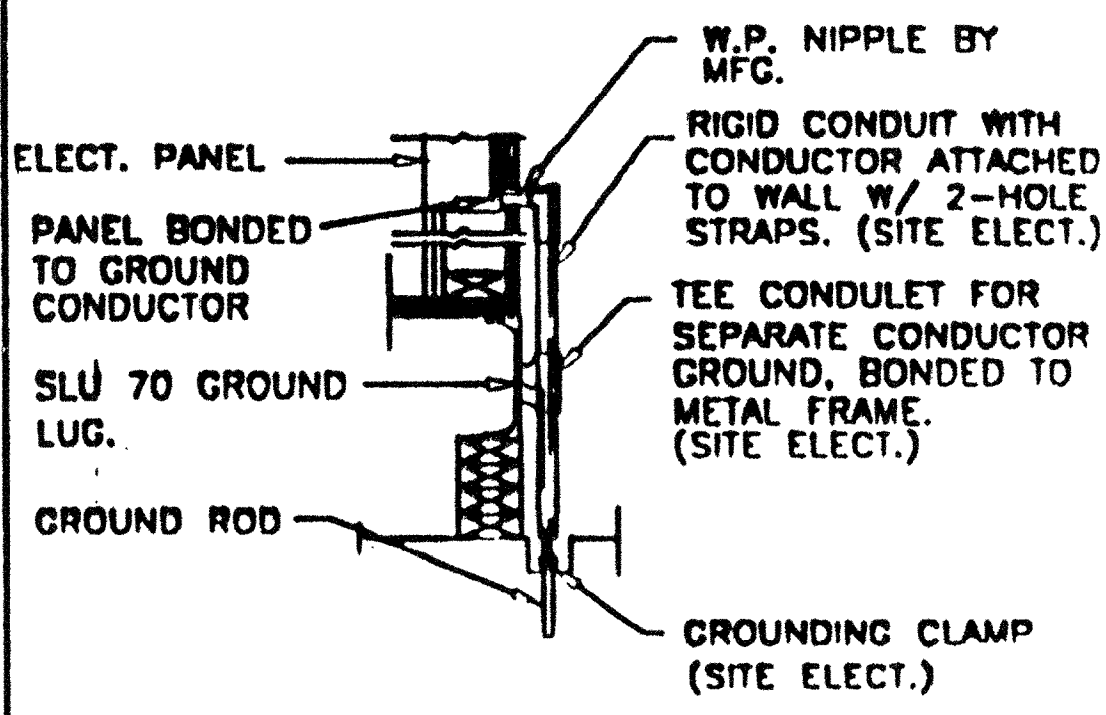
MAIN: 100 AMP		PANEL: A				FEED: REAR	
		LOCATION: REAR/INTERIOR				MOUNTING: FLUSH	
LOAD	WATTS	BREAKER		WATTS		LOAD	
		Am	B#	Am	B#		
RECEPTACLE (4)	720	20	1	2	50	3360 HVAC (3.5T)	
RECEPTACLE/CLOCK (5)	720	20	1	4	-	3360 HVAC (3.5T)	
INT/EXT LIGHTS (13)	900	20	1	6	30	2500 HEAT STRIPS (5KW)	
INTERIOR LIGHTS (12)	840	20	1	8	-	2500 HEAT STRIPS (5KW)	
				10	-		
				11	-		
				12	-	40 FIRE ALARM (DEDICATED)	
WATTS/PHASE	A = 7480	1820	1580			5880 5880 B = 7480 WATTS/PHASE	
TOTAL	15,375 WATTS	85	AMPS	120/240 VOLTS	SINGLE Ø	THREE WIRE	
NCL = 13,200 W							

GENERAL GROUNDING NOTES

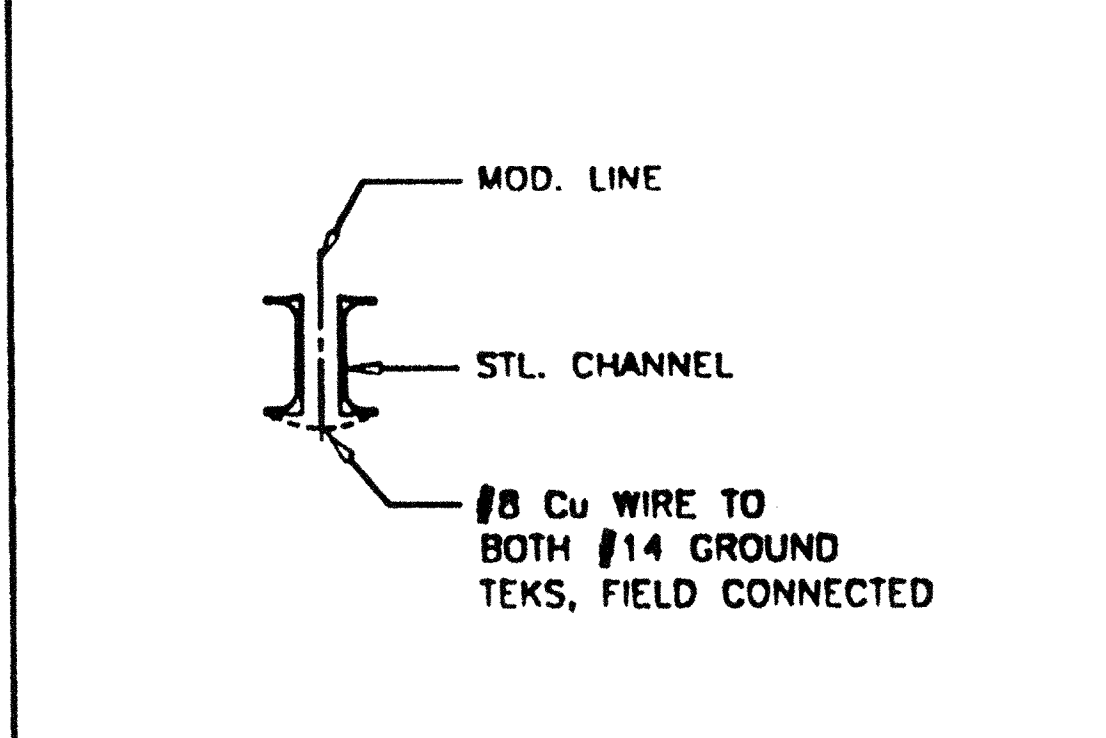
- EACH BUILDING SHALL BE SEPARATELY GROUNDING WITH A 1/2" Ø, # 8 COPPER/CLAD STEEL GROUND ROD, WHERE ROCK BOTTOM IS ENCOUNTERED, ROD SHALL BE DRIVEN AT AN ANGLE NOT TO EXCEED 45 DEGREE'S FROM THE VERTICAL OR SHALL BE BURIED IN A TRENCH THAT IS AT LEAST 30" DEEP. (BY SITE ELECTRICAL)
- TESTING TEST FOR RESISTANCE TO GROUND, IF RESISTANCE EXCEEDS 25 OHMS, INSTALL ADDITIONAL GROUND RODS SEPARATED AT LEAST 6'-0" UNTL RESISTANCE IS REDUCED TO 25 OHMS OR LESS. (BY SITE ELECTRICAL)
- PROVIDE EQUIPMENT ANCHORAGE PER TITLE 24, TABLE 18 J, PART B.
- APPROVAL OF THIS PLAN DOES NOT CONSTITUTE APPROVAL OF THE FIRE ALARM FOR ALL SITES. THE FIRE ALARM SYSTEM AND/OR COMPONENTS MAY BE REQUIRED TO BE CHANGED DUE TO SITE LOCATION, EXISTING CONDITIONS OR INCOMPATIBLE COMPONENTS.
- GROUNDING TEST SHALL BE DONE IN THE PRESENCE OF THE PROJECT INSPECTOR. ALL GROUNDING SHALL BE IN ACCORDANCE WITH C.E.C. ARTICLE 250.

ELECTRICAL LEGEND

- 2'x4' 4 TUBE FLUORESCENT LIGHT FIXTURE
- STANDARD LIGHT FIXTURE AT +93" AFF
- DUPLEX WALL RECEPTACLE 15-A 125-V 3-WIRE AT +18" AFF
- HVAC UNIT [HV]
- 4s J-BOX FOR FIRE ALARM PULL STATION AT +48" AFF, 3/4" CO TO PULLSTRING
- 4s J-BOX FOR FIRE ALARM STROBE AT +80" AFF, 3/4" CO TO PULLSTRING
- 4s J-BOX FOR FIRE ALARM HORN AT +96" AFF 3/4" CO STUB IN ATTIC, PULLSTRING
- WEATHER PROOF GUTTER BOX (8x8x4) AT +18" AFF 3/4 CO STUB IN ATTIC, PULLSTRING
- ELECTRICAL PANEL AT +60" AFF TO CENTERLINE 1 1/4" POWER NIPPLE INCL. GND JUMPER BY SITE ELECT
- SWITCH AT +48" AFF
- CLOCK AT +90" AFF



TYP GROUNDING DETAIL 1



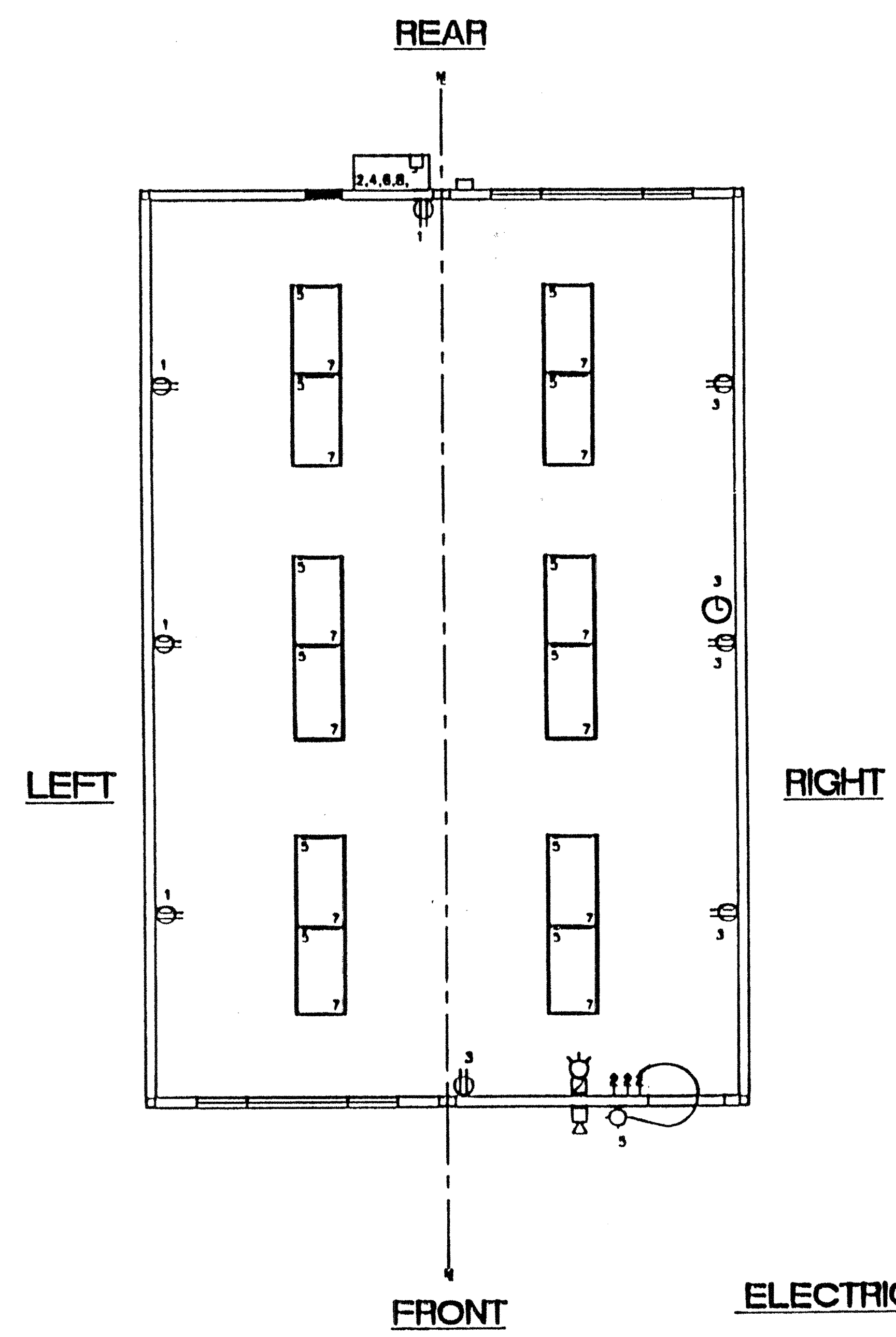
GROUND JUMPER - MOD LINE 2

NOTES

- SCHOOL EQUIPMENT ANCHORAGE
THE FOLLOWING IS FOR THE ARCHITECT'S INFORMATION ONLY:
THE SEISMIC ANCHORAGE OF ELECTRICAL EQUIPMENT SHALL CONFORM TO C.C.R. TITLE 24, SECTION 18300.2 (b) AND TABLE 184-D. ANCHORAGE DETAIL FOR ROOF/FLOOR MOUNTED EQUIP. WEIGHING LESS THAN 400 LBS. & MOUNT EQUIPMENT WEIGHING LESS THAN 20 LBS. MAY BE OMITTED FROM THE PLAN.
FOR ELECTRICAL DRAWINGS:
ALL ELECTRICAL EQUIPMENT SHALL BE BRACED OR ANCHORED TO RESIST A HORIZONTAL FORCE ACTING IN ANY DIRECTION USING THE FOLLOWING CRITERIA:

EQUIPMENT ON GRADE	JOB OF OPERATING WEIGHT
EQUIPMENT ON STRUCTURE	JOB OF OPERATING WEIGHT

FOR FLEXIBLY MOUNTED EQUIPMENT USE 4 X THE ABOVE VALUES, AND FOR SIMULTANEOUS VERTICAL FORCE USE 1/3 X THE HORIZONTAL FORCE.
THE ABOVE VALUES ARE FOR AN IMPORTANCE FACTOR, 1 = 1.0 AND SEISMIC ZONE, 2 = 0.4.
WHERE ANCHORAGE DETAILS ARE NOT SHOWN ON THE DRAWINGS THE FIELD INSTALLATION SHALL BE SUBJECT TO THE APPROVAL OF THE ARCHITECT AND THE FIELD ENGINEER OF THE OFFICE OF THE STATE ARCHITECT.



ELECTRICAL PLAN (24'X40') SCALE: 1/4" = 1'-0"

REVISIONS

Electrical Engineer's Seal	Mechanical Engineer's Seal	Structural Engineer's Seal	Architect's Seal	Division of the State Architect OFFICE OF REGULATION SERVICES APR 27 2000	 MODTECH INC. 2830 BARRETT AVENUE PERRIS, CALIF. 92572 PH (909) 943-4014 FAX (909) 940-0427
----------------------------	----------------------------	----------------------------	------------------	---	---

PROJECT NUMBER: ----	© MODTECH, INC. 1998	DRAWN BY: --- CHECKED BY: --- DATE: --- PROJECT NO: ----
ELECTRICAL PLAN		E1.0

RAC
 STATE OF CALIFORNIA
 LICENSE NO. 101527
 DATE SEP 2 1999