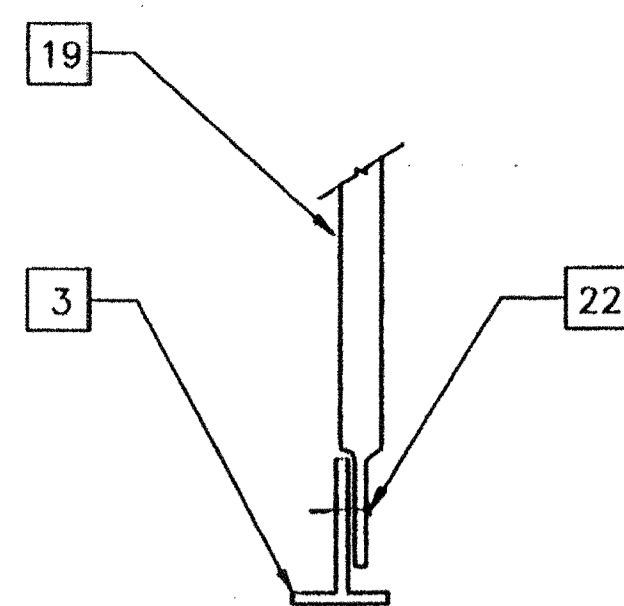


ALTERNATE

TYPICAL FIXED SIDE

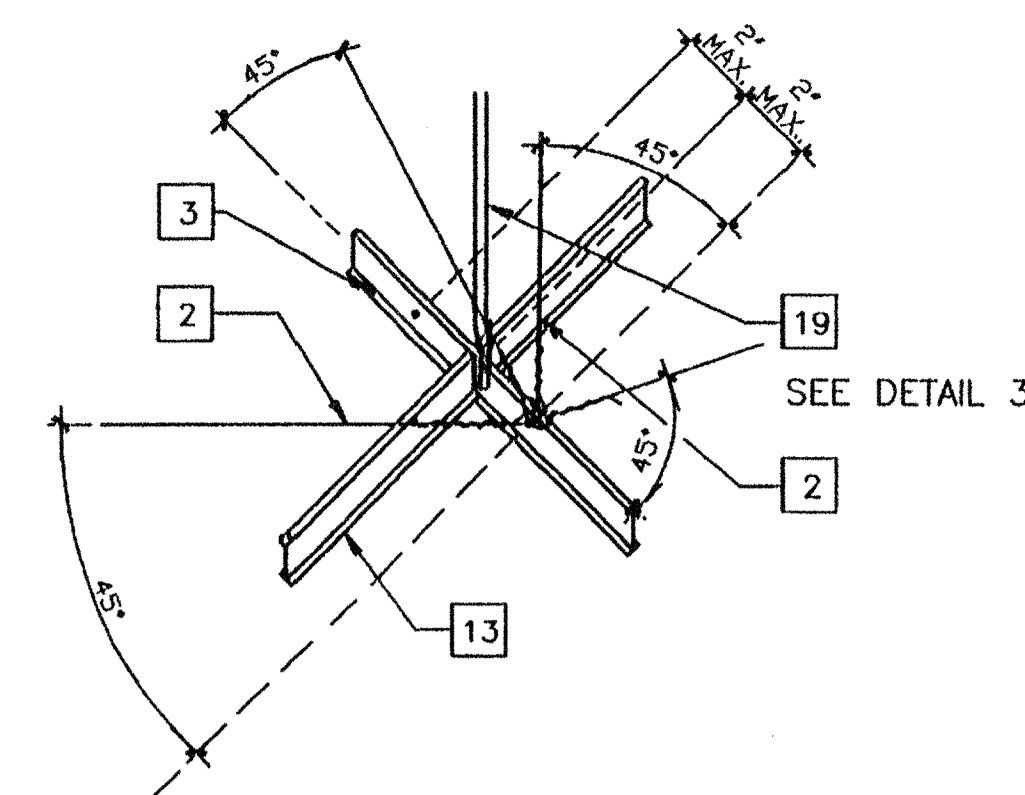
7



NOTE: CONDUIT MAY BE CRIMPED ON EITHER SIDE OF T-BAR, DEPENDING UPON CONDITION & LOCATION

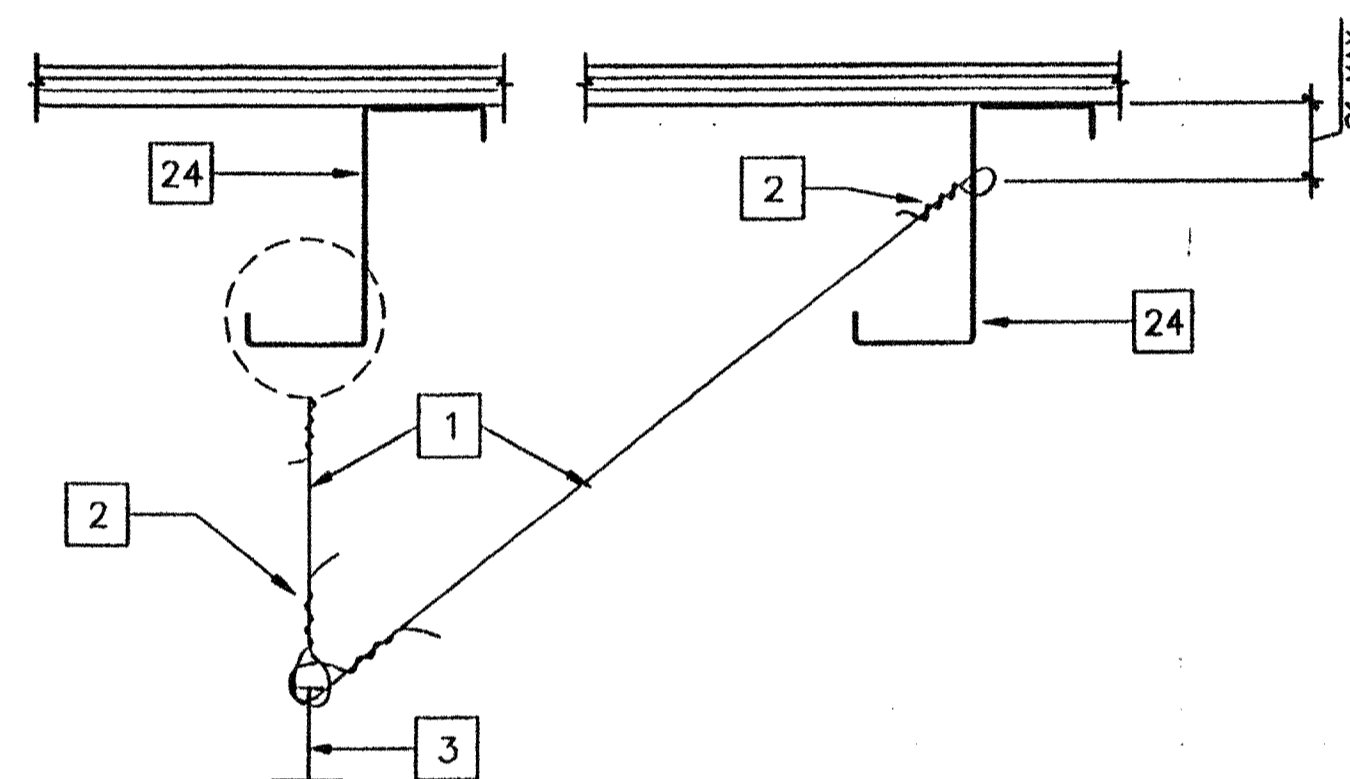
ALT. CONN. AT BOTTOM

4

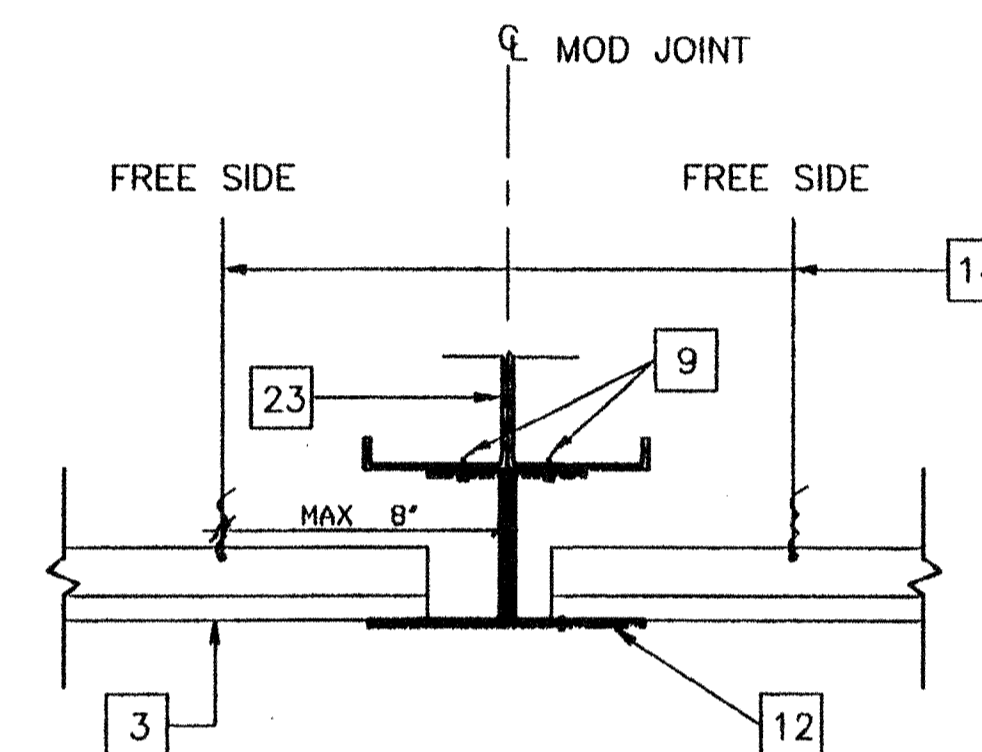


SIESMIC SPLAY - 4 WAY

1



5

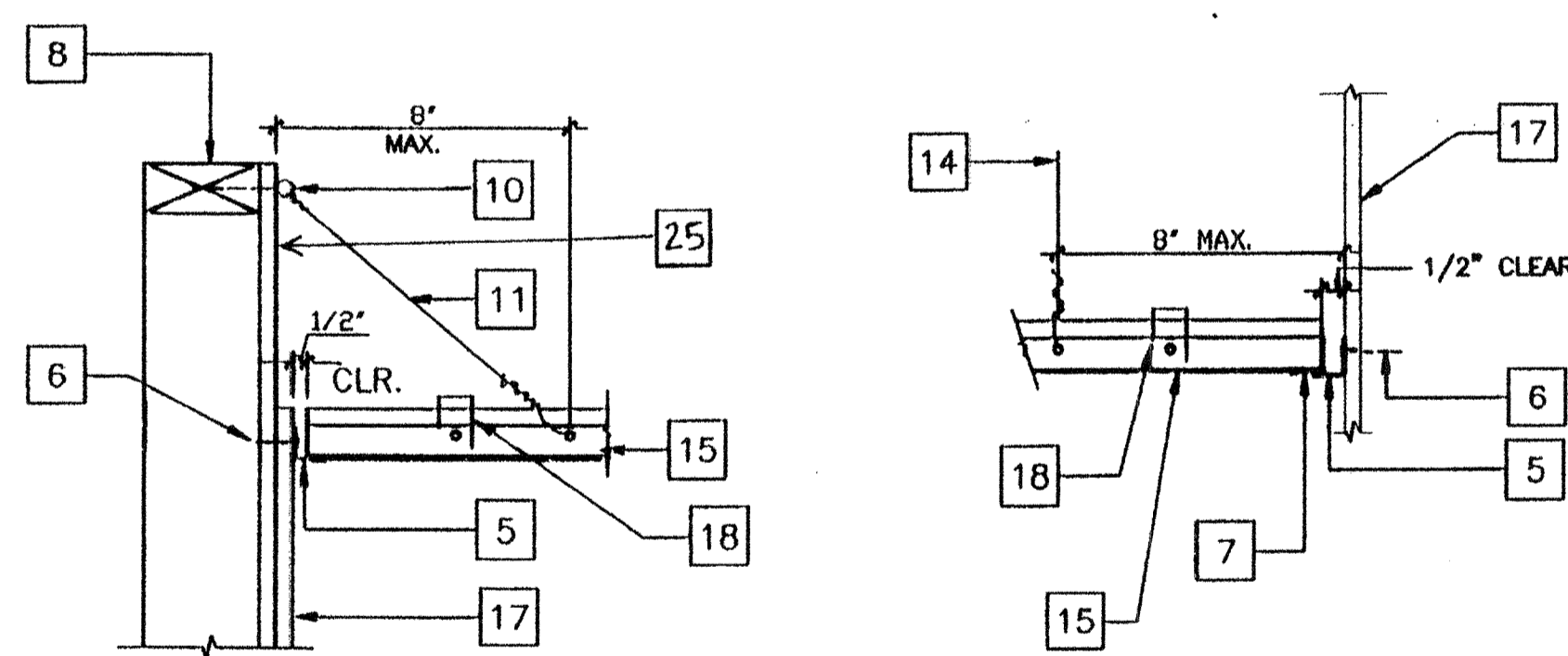


NOTE: LAY-IN CEILING TILE NOT SHOWN FOR CLARITY.

GRID AT MOD LINE

SCALE 3"=1'

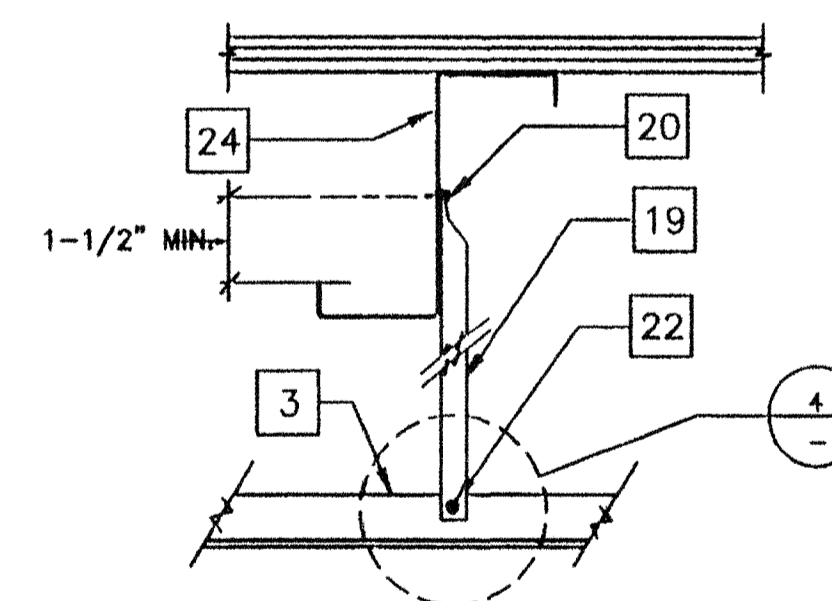
2



ALTERNATE

TYPICAL FREE SIDE

6

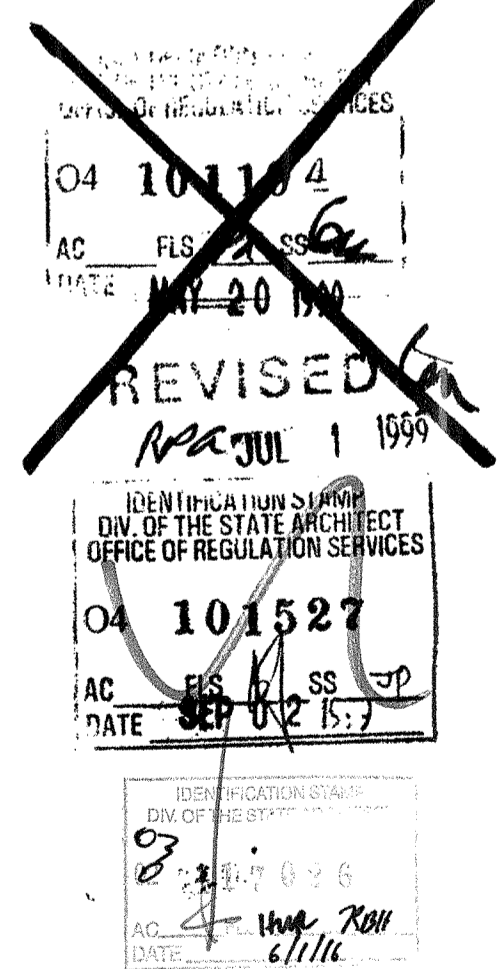


NOTE: CONDUIT MAY BE CRIMPED ON EITHER SIDE OF T-BAR DEPENDING UPON CONDITION & LOCATION

3

KEY NOTES

- 1 12GA. HANGER OR DIAGONAL SPLAY WIRE IN PUNCHED OR DRILLED HOLE
- 2 12GA. WIRE WITH 4 WRAPS IN 1 1/2" (TYP.) WIRE TO RUN PERPENDICULAR TO MAIN TEE
- 3 MAIN RUNNER
- 4 1/8"Ø POP RIVET TO EACH T-BAR
- 5 WALL ANGLE
- 6 6d 16" Ø FRAMING TO WALL STUD #8 S.T.S.M.S. WHEN METAL STUDS ARE USED
- 7 ANGLE WITH 1/8"Ø POP RIVET TO EACH T-BAR NO CONNECTION TO WALL ANGLE
- 8 TOP PLATE
- 9 #10 S.T.S.M.S. @ 4' O.C.
- 10 3" X 1/4" EYED SCREW. 1/8"Ø X 2" JIF-E SCREW WHEN METAL STUDS ARE USED
- 11 HANGER TO WALL WHERE NO RAFTER ABOVE MAX SLOPE 1" IN 6"
- 12 28 GA. JETCOAT
- 13 CROSS TEE
- 14 12GA. HANGER WIRE AT THE END ON EACH RUNNER MIN. 4 WRAPS IN MAX 1 1/2" - SEE DETAIL #5 FOR WIRE TO PURLIN ATTACHMENT
- 15 MAIN RUNNERS OR CROSS TEES
- 16 ACOUSTICAL BOARD
- 17 FINISH WALL
- 18 HORIZONTAL STRUTS SHALL RUN CONTINUOUS AT ALL PERIMETERS, NOT POP RIVETED TO THE WALL ANGLE ARMSTRONG #7425 OR #7445 WITH SPRING STEEL SNAP TO RUNNER PER IR 47-4
- 19 3/4" EMT CONDUIT - MAX 5'-2" (COMPRESSION STRUT)
- 20 CRIMP CONDUIT AND ATTACH TO RAFTER WITH (2) #8 TEK SCREW
- 21 PROVIDE SPACE AT ALL MEMBERS AT OPPOSITE WALL
- 22 CRIMP CONDUIT AND ATTACH TO T-BAR GRID WITH #8 TEK SCREW
- 23 ROOF BEAM SEE (61R)
- 24 ROOF PURLIN SEE (61R)
- 25 CARRY GYP. BRD. TO TOP PLATE FOR FIRE BLOCKING.



REVISIONS	Electrical Engineer's Seal	Mechanical Engineer's Seal	Structural Engineer's Seal	Architects Seal
1				
2				
3				
4				
5				

Electrical Engineer's Seal
Mechanical Engineer's Seal
Structural Engineer's Seal
Architects Seal

Division of the State Architect
REVISED
IDENTIFICATION STAMP
DIV. OF THE STATE ARCHITECT
OFFICE OF REGULATION SERVICES
PC-270
AC: FLS: SS: [Signature]
DATE: FEB 19 1999

MODTECH INC.
2830 BARRETT AVENUE
PERRIS, CALIF. 92572
PH (909) 943-4014
FAX (909) 940-0427

PROJECT NUMBER:
© MODTECH, INC. 1999

DRAWN BY: RYF
DATE: 2-2-99
CHECKED BY: [Signature]
DATE:
MODTECH PROJECT NO:
MODTECH Index No.

A7.1

FILE PATH: PC270A71.DWG

PROJECT NO. PC-270

REFLECTED CEILING DETAILS