

DOOR SCHEDULE												
DOORS					FRAMES							
DOOR NUMBER	FRAME OPENING SIZE	MATERIAL	TYPE	FIRE RATING	HARDWARE SET NO.	QUANTITY	MATERIAL	HEAD DETAIL	JAMB DETAIL	SILL DETAIL	JAMB THROAT	NOTE NO.
1	3'-0" X 6'-8"	HM	A	NA	1		HM	7/A6.0	8/A6.0	1/A6.0	5-1/8"	

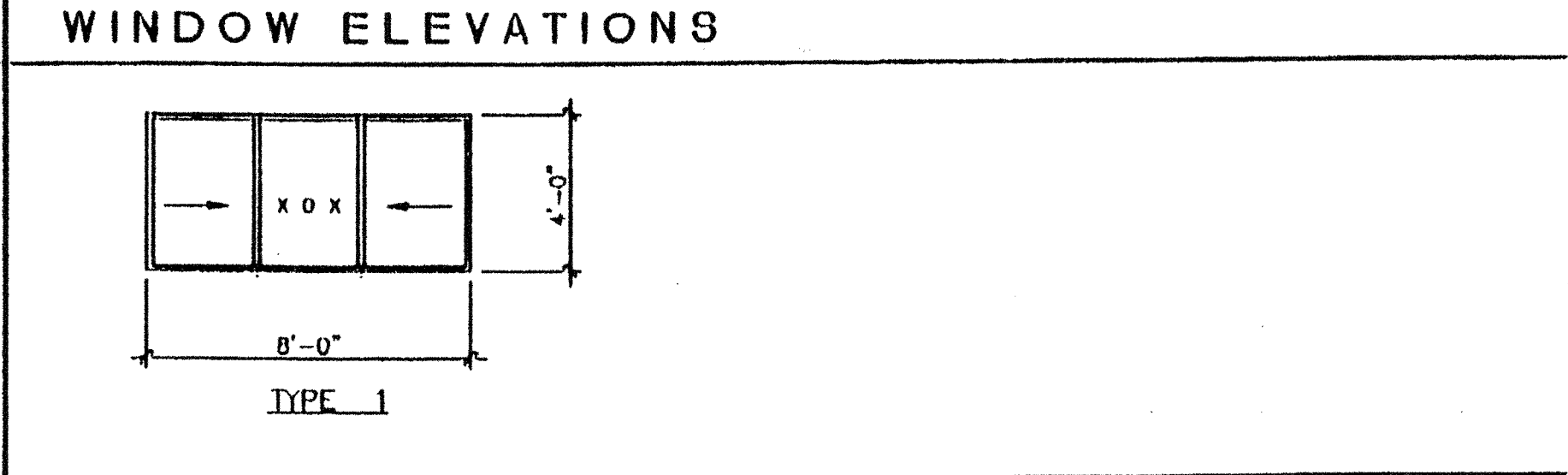
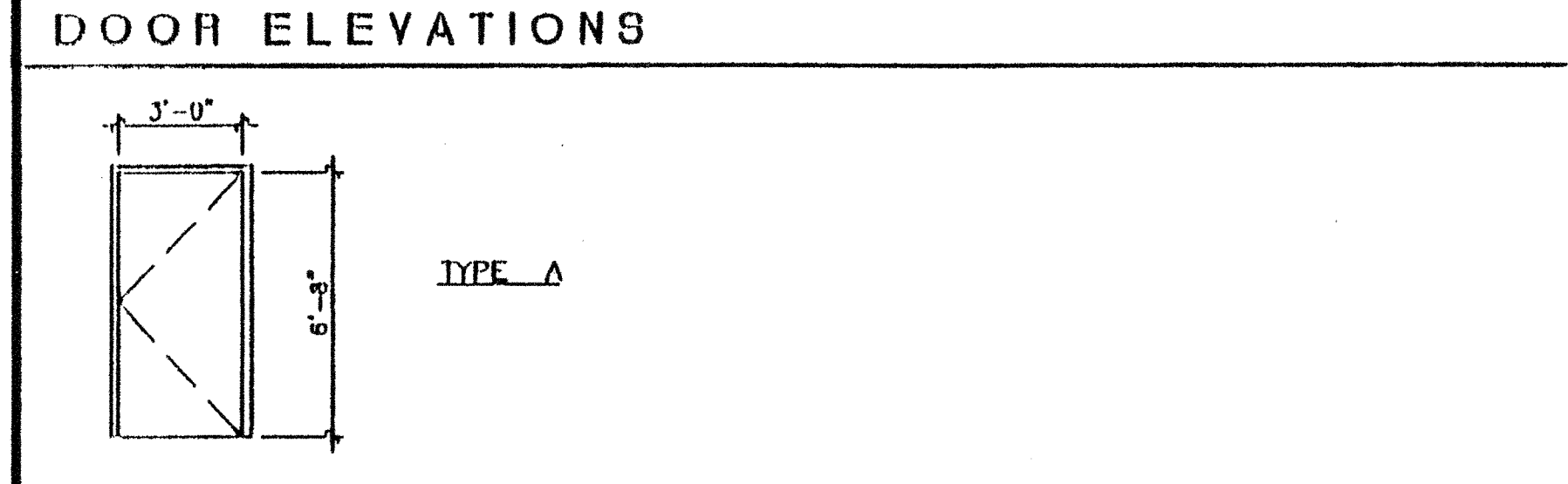
WINDOW SCHEDULE						
AMT.	TYPE	WIDTH	HEIGHT	FINISH	WIN. NO.	GLASS TYPE
2	1	8'-0"	4'-0"	ANODIZED	A	7/32" MIN, SOLAR GRAY 46%, SINGLE GLAZE

ROOM FINISH SCHEDULE										
ROOM NUMBER	ROOM NAME	FLOOR	BASE	FINISHES				REMARKS		
				FRONT WALLS	LEFT	REAR	RIGHT			
1	CLASSROOM	A	D	F	F	F	F	L	8'-6"	SEE SIGNAGE

**NOTES**

- ALL FINISHES SHALL COMPLY WITH C.B.C. CHAPTERS 3.6, 7.8, & 10 & C.F.C. & TITLE 19 C.C.R.
- FOR DOOR AND DOOR FRAME DATA SEE SPECIFICATIONS ON SHEET A8.0.

HM - HOLLOW METAL  
 AL - ALUMINUM  
 SST - STAINLESS STEEL  
 STL - STEEL  
 WWF - WINDOW WALL FRAME  
 SC - SOLID CORE WOOD  
 HC - HOLLOW CORE WOOD  
 SCL - SOLID CORE WOOD W/LAMINATED PLASTIC FACES

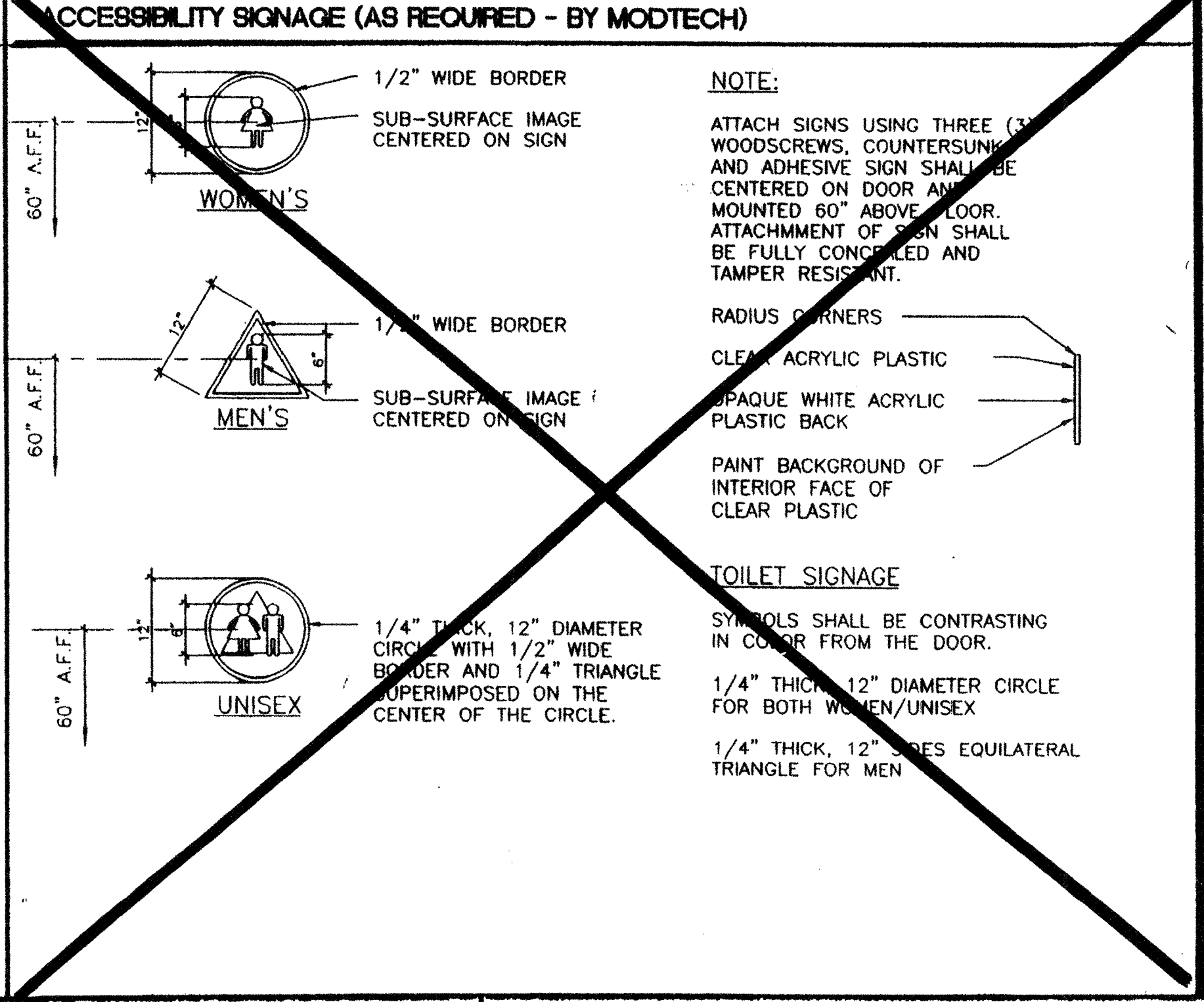
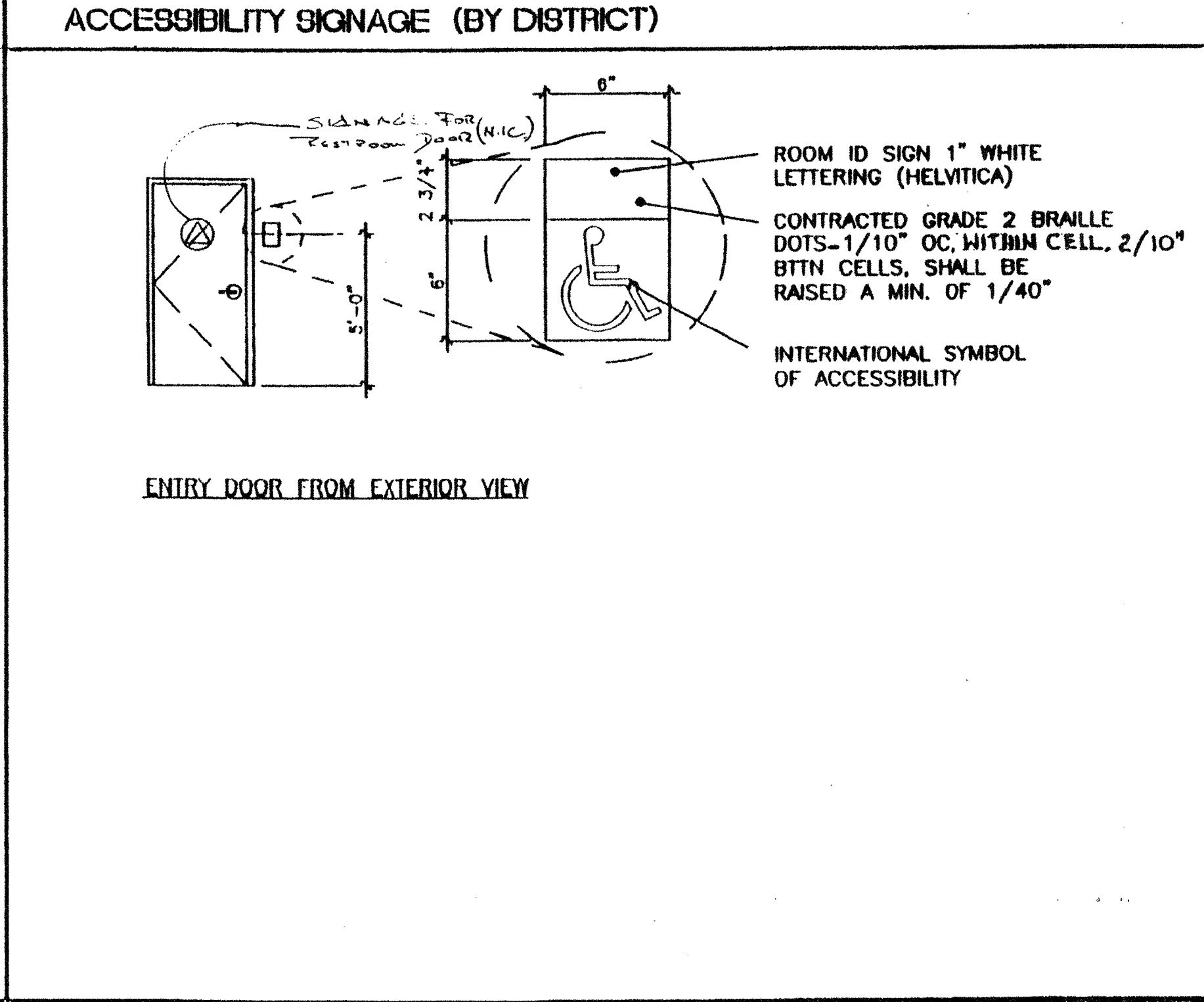


- DOOR NOTES**
- DOOR HANDLES FOR LOCKSETS TO BE CENTERED @ 36" AFF & DEADBOLTS @ 44" AFF.
  - HARDWARE TO BE OPENABLE FROM THE INSIDE WITHOUT ANY SPECIAL KNOWLEDGE OR EFFORT. LEVERS TO RETURN TO WITHIN 1/2" OF DOOR.
  - ALL DOORS SHALL BE 1-3/4" THICK UNO
  - DOUBLE LETTERS IN SCHEDULE, INDICATES A PAIR OF DOORS.
  - SAFETY GLASS, CLEAR
  - WIRE GLASS
  - UNDERCUT DOOR
  - FIXED LOUVER
  - FUSIBLE LINK LOUVER
  - VISION PANEL
  - CLOSURE SHALL BE SET FOR MAXIMUM OPENING PRESSURE OF 8.5 LBS @ EXTERIOR DOORS AND 5.0 LBS @ INTERIOR DOORS.

- WINDOW NOTES**
- 0040 XOX ANODIZED ALUMINUM GLAZING; EXTERIOR LITE 3/16" MIN. TEMPERED GLASS OF SOLAR GRAY WITH A LITE TRANSMISSION FACTOR OF 46%. 1/4" ALUMINUM SPACER. INTERIOR LITE - 1/8" MIN. CLEAR TEMPERED. ALL OPERABLE SASH SHALL HAVE ALUMINUM SScreens.

- FINISH NOTES**
- SUB-FLOOR PREP:**  
 PREPARATION FOR SUB FLOOR TO ACCEPT FINISH FLOORING IS BY FLOORING CONTRACTOR. PLYWOOD SUB FLOOR IS 2.4.1 PLYWOOD. OUTER PLY IS PLUGGED AND TOUCH SANDED, ANY DEFORMITIES DUE TO STANDARD CONSTRUCTION PRACTICES SHALL BE FILLED AND SANDED BY FLOORING CONTRACTOR. THE JOINT AT THE MODULE JOINING SHALL NOT BE LARGER THAN 1/8" AND SHALL BE FILLED AND SANDED BY FLOORING CONTRACTOR.

- HARDWARE SCHEDULE**
- HARDWARE SET #1**
- LOCKSET - SCHLAGE D70PD, RHODES LEVER, OR EQUAL
  - BUITS - 1-1/2 PAIR HAGER 1279 BB 4-1/2 x 4-1/2 NRP 26D OR EQUAL
  - CLOSER - NORTON 0500 DA / LCN 1460 OR EQUAL
  - THRESHOLD - PEMCO 271A OR EQUAL
  - DOOR BOTTOM - PEMCO 216AV OR EQUAL
  - WEATHERSTRIP - PEMCO 299AV OR EQUAL
  - DOOR STOP - QUALITY #44 OR EQUAL
- HARDWARE SET #2 (INTERIOR TOILET ROOM / PRIVACY)**
- LOCKSET - SCHLAGE D40S OR EQUAL
  - BUITS - 1-1/2 PAIR HAGER 1279 4-1/2 x 4-1/2 26D



**REVISIONS**

1				
2				
3				
4				
5				

Electrical Engineer's Seal  
 Mechanical Engineer's Seal  
 Structural Engineer's Seal  
 Architect's Seal  
 Division of the State Architect  
**REVISED**  
 IDENTIFICATION STAMP  
 DIV. OF THE STATE ARCHITECT  
 OFFICE OF REGULATION SERVICES  
 PC-270  
 DATE: 11/16/99

**MODTECH INC.**  
 2830 BARRETT AVENUE  
 PERRIS, CALIF. 92572  
 PH (909) 943-4014  
 FAX (909) 940-0427

PROJECT NUMBER: © MODTECH, INC. 1998

DESIGN BY: RVF  
 DATE: 2-2-99  
 CHECKED BY: SS  
 DATE:  
 PROJECT NO:  
 MODTECH Index No.  
**A5.0**

FILE PATH: PROJECT NO. PC-270