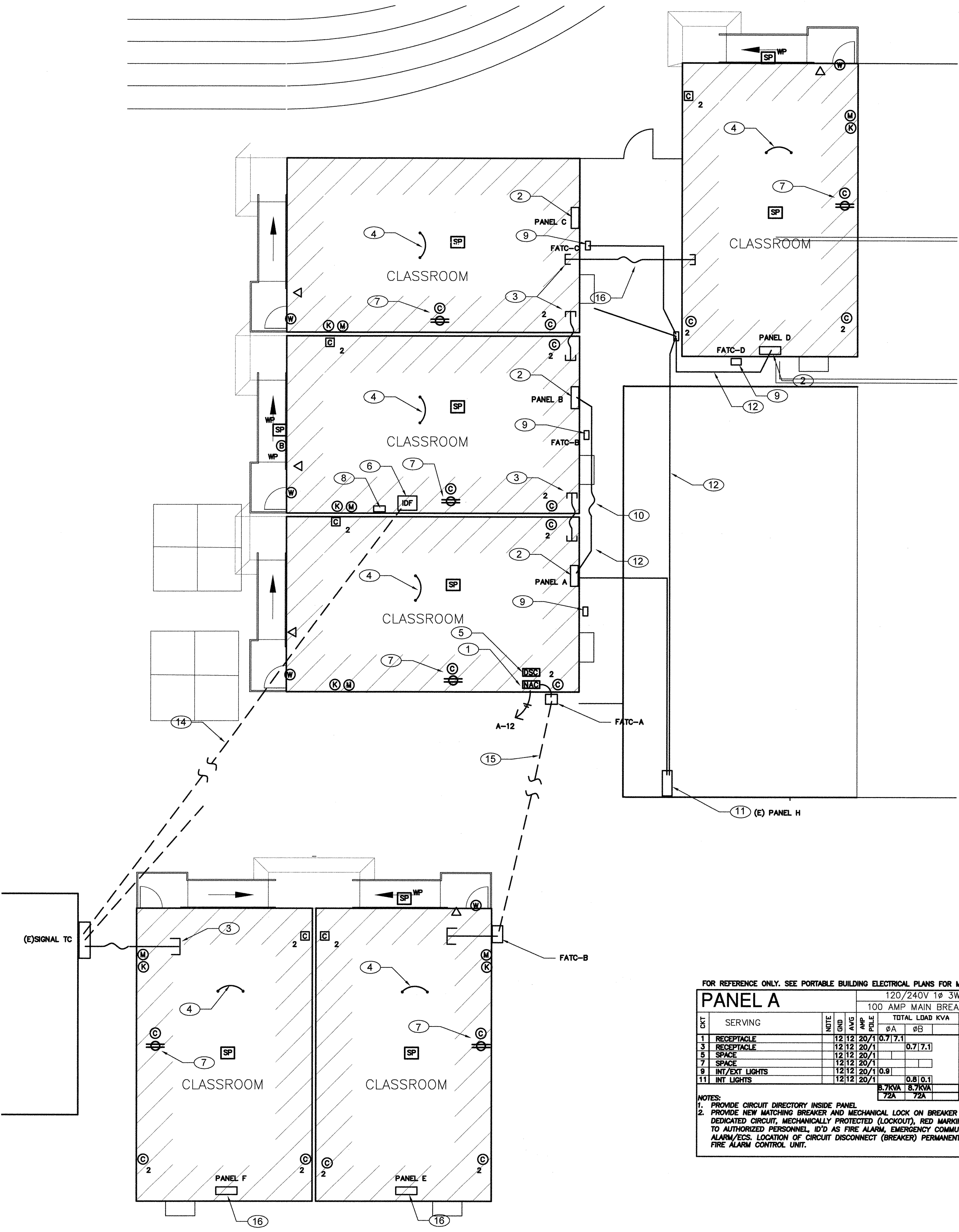


1" = 40'-0"  
 1" = 30'-0"  
 1" = 20'-0"  
 1" = 1'-0"  
 1/4" = 1'-0"



FOR REFERENCE ONLY. SEE PORTABLE BUILDING ELECTRICAL PLANS FOR MORE INFORMATION.

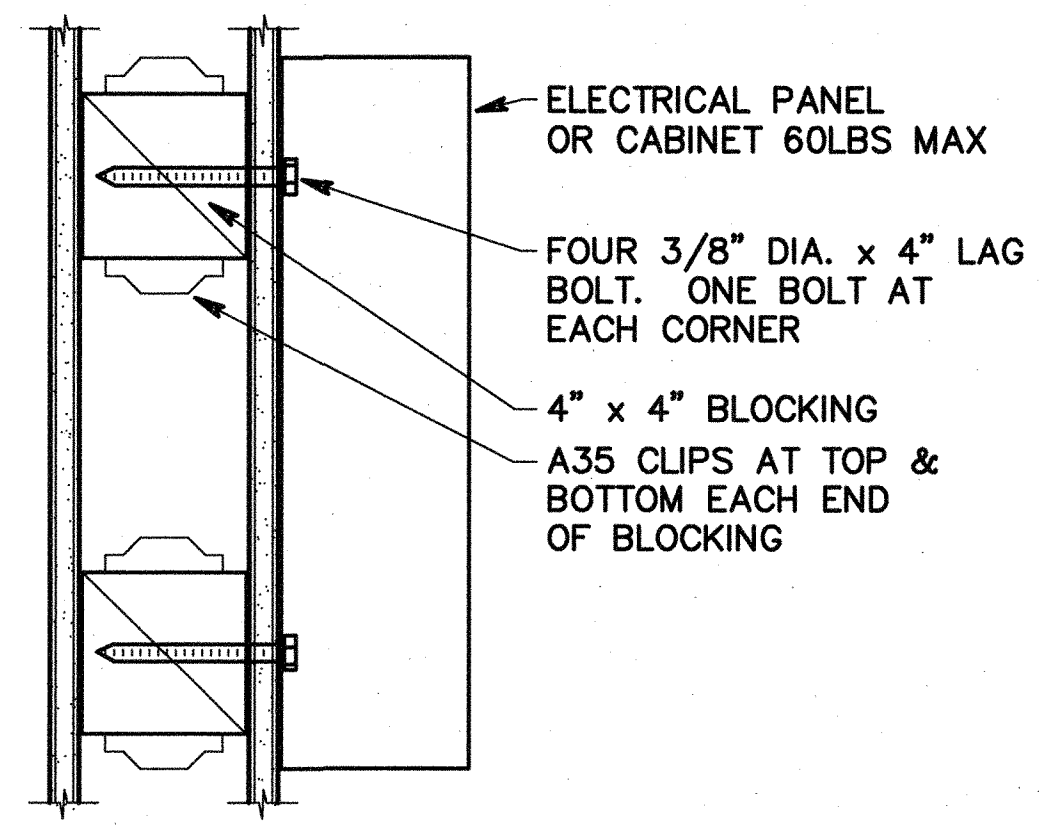
120/240V 1Ø 3W		REAR		FLUSH	
100 AMP MAIN BREAKER		10,000 AIC		NEMA 1	
NO.	SERVING	NOTE	AVG	AVG	AVG
1	RECEPTACLE	12/12/20/1	0.7/1.7		
2	RECEPTACLE	12/12/20/1	0.7/1.7		
3	RECEPTACLE	12/12/20/1	0.7/1.7		
4	SPACE	12/12/20/1			
5	SPACE	12/12/20/1			
6	SPACE	12/12/20/1			
7	INT/EXT LIGHTS	12/12/20/1	10.9		
8	INT LIGHTS	12/12/20/1			
9	INT LIGHTS	12/12/20/1			
10	INT LIGHTS	12/12/20/1			
11	INT LIGHTS	12/12/20/1			
12	INT LIGHTS	12/12/20/1			
			0.8/0.1		
			8.7KVA	8.7KVA	
			72A	72A	

NOTES:  
 1. PROVIDE CIRCUIT DIRECTORY INSIDE PANEL.  
 2. PROVIDE NEW MATCHING BREAKER AND MECHANICAL LOCK ON BREAKER PER NFPA 72, 10.6.5.2: DEDICATED CIRCUIT, MECHANICALLY PROTECTED (LOCKOUT), RED MARKING, ACCESSIBLE ONLY TO AUTHORIZED PERSONNEL, ID'D AS FIRE ALARM, EMERGENCY COMMUNICATIONS OR FIRE ALARM/ECS. LOCATION OF CIRCUIT DISCONNECT (BREAKER) PERMANENTLY IDENTIFIED AT THE FIRE ALARM CONTROL UNIT.

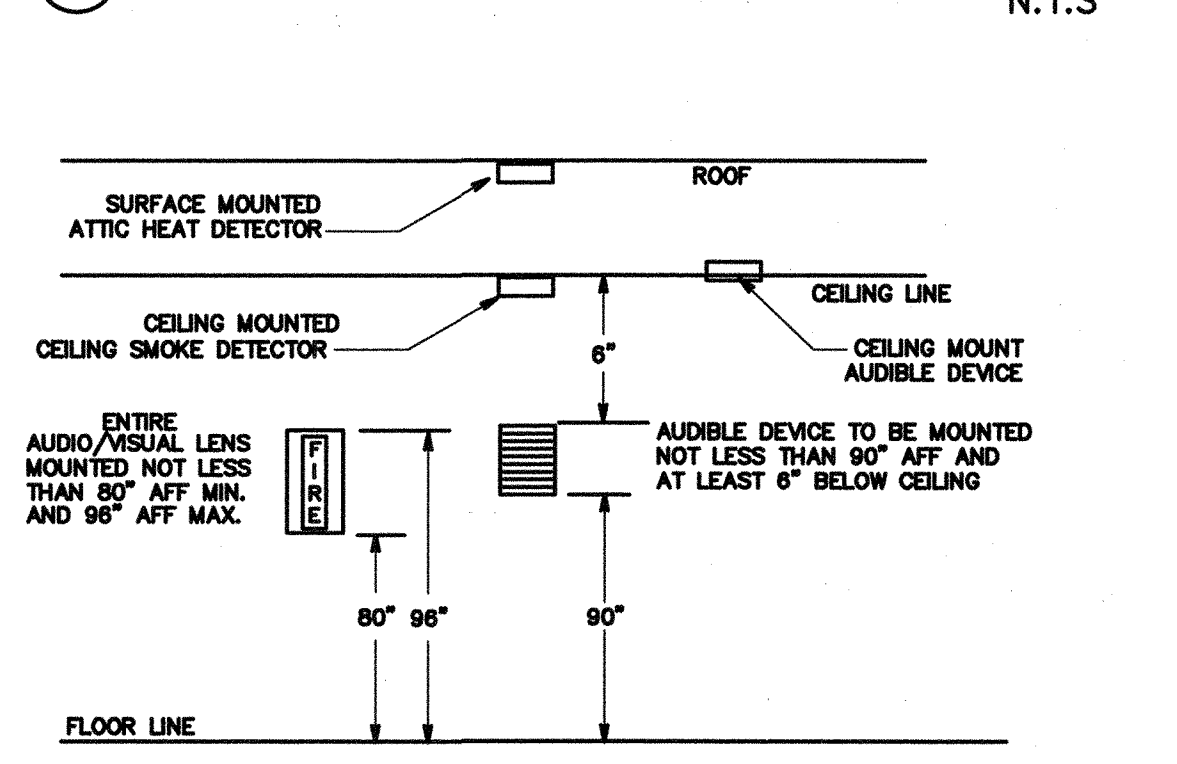
**FIRE ALARM SEQUENCE OF OPERATIONS**

	ACTIVATE ALARM FACP	ACTIVATE ALARM AT REMOTE ANNUNCIATOR	ACTIVATE TRIGGER SIGNAL AT REMOTE ANNUNCIATOR	ACTIVATE SUPERVISORY SIGNAL AT FACP	SEND SUPERVISORY SIGNAL OFF-SITE VIA COMMUNICATOR	ACTIVATE WATER FLOW BELL	PRIMARY FLOOR RECALL	ELEVATOR SHUNT TRIP	SHUT FIRE ALARM NUMBERS	SHUT FIRE ALARM NUMBERS	RESET LOWVAC INITIATING DEVICES	ACTIVATE BATTERY BACK-UP	DEACTIVATE AUDIBLE SIGNALS	RESET FIRE ALARM DEVICES	SYSTEM NORMAL
MANUAL PULL STATION	X	X													
SMOKE DETECTORS:															
ALL (EXCEPT LISTED BELOW)	X	X													
PRIMARY FLOOR LOBBY	X	X													
ALL OTHER LOBBIES	X	X													
ELEVATOR MACHINE ROOM	X	X													
ELEVATOR SHAFT	X	X													
HEAT DETECTORS:															
ALL (EXCEPT LISTED BELOW)	X	X													
ELEVATOR MACHINE ROOM	X	X													
ELEVATOR SHAFT	X	X													
DUCT DETECTOR	X	X													
FIRE SPRINKLER WATERFLOW SWITCH	X	X													
FIRE SPRINKLER TAMPER SWITCH	X	X													
POST INDICATOR VALVE	X	X													
WIRING CONDITIONS:															
SIGNALING LINE CIRCUIT (SLC)-															
WIRE-TO-WIRE SHORT	X	X													
SINGLE OPEN	X	X													
SINGLE GROUND	X	X													
INITIATING DEVICE CIRCUIT (IDC)-															
WIRE-TO-WIRE SHORT	X	X													
SINGLE OPEN	X	X													
SINGLE GROUND	X	X													
NOTIFICATION APPLIANCE CIRCUIT (NAC)-															
WIRE-TO-WIRE SHORT	X	X													
SINGLE OPEN	X	X													
SINGLE GROUND	X	X													
LOSS OF 120VAC POWER	X	X													
SIGNAL SILENCE															
RESET FACP															

NOTE: SOME SEQUENCE OF OPERATIONS SHOWN MAY NOT APPLY



**2 SURFACE MOUNTED IDF DETAIL**



**1 TYPICAL FIRE ALARM DEVICES MT'D DETAIL**



**SHEET NOTES**

- APPROXIMATE LOCATION FOR NEW FIRE ALARM SIGNAL AND AUDIO ROOSTER PANEL. PROVIDE 110V POWER CONNECTION AND DEDICATED CIRCUIT FROM PANEL A-12. SEE DRAWING E-3 FOR MORE INFORMATION.
- PROVIDE POWER CONNECTION FOR RELOCATABLE BUILDING PRE-WIRED PANEL. SEE SINGLE LINE DIAGRAM ON DRAWING E-4.
- PROVIDE 2" C EMT BETWEEN BUILDINGS AND DRILL INTO BUILDING CEILING CAVITY FOR SIGNAL WIRING RACEWAY. CORE DRILL AND SEAL EXTERIOR WALL AS REQUIRED. PULL BACK PA/IC TELE CABLE TO ADMIN OFFICE MASTER EQUIPMENT FOR NEW DEVICES CONNECTION. SEE RISER DIAGRAMS.
- PROVIDE #8 COPPER GROUNDING CONDUCTOR AND BOND TO EACH SECTION STRUCTURAL STEEL BEAM. FIELD VERIFY EXACT LOCATION WITH GENERAL CONTRACTOR PRIOR TO INSTALLATION.
- NEW SECURITY ALARM PANEL AND SYSTEM. PROVIDE 110V POWER CONNECTION AND INTERCONNECTION TO (E) MASTER EQUIPMENT IN ADMIN OFFICE. FIELD VERIFY EXACT LOCATION AND REQUIREMENT WITH OWNER PRIOR TO INSTALLATION. SEE RISER DIAGRAM.
- NEW IDF AND CABINET SURFACE MOUNTED BELOW CEILING. PROVIDE 110V POWER CONNECTION, DATA SWITCH, FO CABLE AND DATA CABLE PATCH PANEL FOR NEW DATA OUTLET CONNECTION. PROVIDE FO CABLE TO (E) IDF IN ADMIN OFFICE FOR INTERCONNECTION. FIELD VERIFY EXACT LOCATION AND REQUIREMENT WITH OWNER PRIOR TO INSTALLATION. SEE RISER DIAGRAM.
- DATA AND POWER OUTLET AT CEILING FOR SMART BOARD. FIELD VERIFY EXACT LOCATION AND REQUIREMENT WITH OWNER PRIOR TO INSTALLATION. SEE RISER DIAGRAM.
- PROVIDE 50 PAIR PUNCH DOWN BLOCK AND SURFACE MOUNTED BELOW CEILING FOR INTERCOM / TELEPHONE WIRING TERMINATION.
- PROVIDE NEW FA PULL BOX. SEE DRAWING E-3 FOR MORE INFORMATION.
- PROVIDE FLEX CONDUIT RACEWAY BETWEEN BUILDINGS AS REQUIRED.
- (E) PANEL H. PROVIDE NEW CONDUITS AND FEEDERS FOR NEW PRE-WIRED PANEL POWER CONNECTION. SEE SINGLE LINE DIAGRAM.
- NEW SURFACE MOUNTED POWER CONDUITS AND FEEDERS. SEE SINGLE LINE DIAGRAM.
- NEW 24"X24"X4" NEWMARK SIGNAL. TO SURFACE MOUNTED ON EXTERIOR WALL. PROVIDE (2) 2" C STUD INTO BUILDING ATTIC CAVITY. SEE SIGNAL RISER DIAGRAM.
- EXISTING U.O SIGNAL CONDUITS TO REMAIN AND REUSE PER PLANS. RESULATE AND REPEAT NEW CONDUCTORS AS REQUIRED. SEE RISER DIAGRAMS.
- EXISTING FA UNDERGROUND CONDUIT TO REMAIN AND REUSE. FIELD VERIFY LOCATION WITH OWNER AND GENERAL CONTRACTOR. PULL IN NEW FA CABLE PER PLANS.
- DISCONNECT AND REMOVE EXISTING PORTABLE BUILDING PANEL. REUSE EXISTING FEEDERS AND RECONNECT TO NEW PORTABLE BUILDING PRE-WIRED PANEL PER PLANS. FIELD VERIFY LOCATION WITH OWNER AND GENERAL CONTRACTOR PRIOR TO DEMOLITION.

**SIGNAL AND COMM. LEGEND**

- SECURITY ALARM SYSTEM**
- DISC1 DIGITAL SECURITY ALARM CONTROL PANEL, MODEL SONITROL (64ZONE). INTERFACE WITH EXISTING BUILDING MASTER SECURITY ALARM PANEL. AS REQUIRED.
  - LOD KEYPAD - MATCH EXISTING EQUIPMENT AS REQUIRED.
  - DUAL TECHNOLOGY CEILING MOUNT DETECTOR. MATCH EXISTING EQUIPMENT AS REQUIRED.
  - EXTERIOR BELL (SPEN) - DISC6515W WITH WEATHERPROOF BACKBOX AND TAMPER SWITCH.
  - DOOR CONTACT SWITCH. RECESS ABOVE DOOR JAMB AT OPEN SIDE.
  - B - INDOOR SECURITY ALARM CABLE. WEST PENN #241
  - B1 - OUTDOOR SECURITY ALARM CABLE. WEST PENN #AQ224
- COMMUNICATION (TELEPHONE/INTERCOM) SYSTEM**
- HANDSET/PHONE - FIELD VERIFY MODEL NO. AND MATCH EXISTING MASTER EQUIPMENT AS REQUIRED.
  - CEILING SPEAKER - RAILAND #J50221 W/ACC1000 BAFFLE. PROVIDE BACKBOX AND CEILING SUPPORT AS REQUIRED.
  - SP1P OUTDOOR SPEAKER - ATLAS #APF15 HORN W/FAIR AND LOWELL (#0284 FOR SURFACE, #075X FOR RECESS) BACK BOX W/SOLIC GRILL
  - T - OUTDOOR TELE/IC CABLE. 22AWG SOLID COPPER 12 PAIR SHIELDED AND 12 PAIR UNSHIELDED CABLE.
  - T1 - INDOOR TELEPHONE CABLE. CAT.3 22AWG SOLID COPPER 4UTP SHIELDED CABLE.
  - P1 - OUTDOOR PA/IC CABLE - WEST PENN #40C-368
- DATA COMMUNICATION SYSTEM**
- D2 DATA OUTLET - LEVITON CAT 5E (DUAL RECEPTACLE RED IN COLOR FOR ADMINISTRATIVE)
  - D2 DATA OUTLET - LEVITON CAT 5E (DUAL RECEPTACLE BLUE IN COLOR FOR INSTRUCTIONAL)
  - FO - FIBER OPTIC CABLE VIA INNER DUCT WITH J-HOOK IN ATTIC AND 2" C FOR OUTDOOR. SEE RISER DIAGRAM FOR MODEL NO.
  - C1 - (ONE) CAT 5E 22AWG 4UTP. SEE RISER DIAGRAM FOR MODEL NO.
  - C2 - (TWO) CAT 5E 22AWG 4UTP. SEE RISER DIAGRAM FOR MODEL NO.
- NOTES:**
- ALL SIGNAL CONDUCTORS CANNOT SPICE INSIDE PULL BOX. CONDUCTOR MUST CONTINUE RUN BETWEEN SIGNAL DEVICES BACK BOX OR ABOVE GROUND TERMINAL CABINET.

**POWER AND SIGNAL PLAN**

SCALE : 1/8" = 1' - 0"

Ownership of Documents  
 This document, the ideas and designs incorporated herein, as an instrument of Professional Service is the property of Integrated Designs by SOMAM Inc. and is not to be used, in whole or in part for any other project without written authorization.  
 © COPYRIGHT 2013

**integrated designs by SOMAM, Inc.**  
 ARCHITECTURE - ENGINEERING - INTERIOR DESIGN - CONSTRUCTION MANAGEMENT  
 8001 N. Fremont, Suite 205, Fresno, California 93710  
 Phone (559) 438-0881 Fax (559) 438-0887 E-Mail: design@integrated.com  
 www.integrateddesigns.com

Project Name & Address:  
**6 RELOCATABLE CLASSROOMS**  
**FRANKLIN ELEMENARY SCHOOL**  
 BAKERSFIELD CITY SCHOOL DISTRICT  
 2400 TRUXTUN AVE., BAKERSFIELD, CA

Issue Date: 00/00/16  
 Date: 5/31/16  
 Designer: J CHONG  
 DR: J CHONG  
 PC: C.M

Agency Approval Stamp:  
 FILE #15-6  
 IDENTIFICATION STAMP  
 DIV. OF THE STATE ARCHITECT  
 OFFICE OF REGULATION SERVICES  
 03-117026  
 AC: [Signature]  
 DATE: 6/1/16  
 TRACKING #: DSA TRACKING NO

Stamp(s):  
 REGISTERED ARCHITECT  
 JOHN S. CHONG  
 No. C 28986  
 EXPIRES 5-31-15  
 STATE OF CALIFORNIA

Job No.: **5142**  
 Sheet No.: **E-2**  
 Release:

CONSULTING ENGINEERS  
**John S. Chong Engineering**  
 JOHN S. CHONG  
 E 14419  
 Exp. 6/30/2018  
 ELECTRICAL  
 2017 E. DECATUR AVE. FRESNO CA 93710  
 (559) 935-9288 • FAX 257-5401  
 jchong1neer@aol.com