

FLOOR FRAMING PLAN
SCALE: 1/4" = 1'-0"
LIVE LOAD = 70 PSF

NOTE: CHART'S BEAMS MAY BE SUBSTITUTED WHEREVER C7X9.8 BEAMS ARE SPECIFIED.

NOTE: STEEL JOISTS @ 24" O.C. TO CENTERLINE OF TOP FLANGE FOR CONNECTION AND WELDING TO THIS MODULE ONLY.

NOTE: STEEL JOISTS @ 48" O.C. TO CENTERLINE OF TOP FLANGE FOR CONNECTION AND WELDING TO THIS MODULE ONLY.

NOTE: STEEL JOISTS @ 24" O.C. TO CENTERLINE OF TOP FLANGE FOR CONNECTION AND WELDING TO THIS MODULE ONLY.

NOTE: STEEL JOISTS @ 48" O.C. TO CENTERLINE OF TOP FLANGE FOR CONNECTION AND WELDING TO THIS MODULE ONLY.

NOTE: STEEL JOISTS @ 24" O.C. TO CENTERLINE OF TOP FLANGE FOR CONNECTION AND WELDING TO THIS MODULE ONLY.

NOTE: STEEL JOISTS @ 48" O.C. TO CENTERLINE OF TOP FLANGE FOR CONNECTION AND WELDING TO THIS MODULE ONLY.

NOTE: STEEL JOISTS @ 24" O.C. TO CENTERLINE OF TOP FLANGE FOR CONNECTION AND WELDING TO THIS MODULE ONLY.

NOTE: STEEL JOISTS @ 48" O.C. TO CENTERLINE OF TOP FLANGE FOR CONNECTION AND WELDING TO THIS MODULE ONLY.

NOTE: STEEL JOISTS @ 24" O.C. TO CENTERLINE OF TOP FLANGE FOR CONNECTION AND WELDING TO THIS MODULE ONLY.

NOTE: STEEL JOISTS @ 48" O.C. TO CENTERLINE OF TOP FLANGE FOR CONNECTION AND WELDING TO THIS MODULE ONLY.

NOTE: STEEL JOISTS @ 24" O.C. TO CENTERLINE OF TOP FLANGE FOR CONNECTION AND WELDING TO THIS MODULE ONLY.

NOTE: STEEL JOISTS @ 48" O.C. TO CENTERLINE OF TOP FLANGE FOR CONNECTION AND WELDING TO THIS MODULE ONLY.

NOTE: STEEL JOISTS @ 24" O.C. TO CENTERLINE OF TOP FLANGE FOR CONNECTION AND WELDING TO THIS MODULE ONLY.

NOTE: STEEL JOISTS @ 48" O.C. TO CENTERLINE OF TOP FLANGE FOR CONNECTION AND WELDING TO THIS MODULE ONLY.

NOTE: STEEL JOISTS @ 24" O.C. TO CENTERLINE OF TOP FLANGE FOR CONNECTION AND WELDING TO THIS MODULE ONLY.

NOTE: STEEL JOISTS @ 48" O.C. TO CENTERLINE OF TOP FLANGE FOR CONNECTION AND WELDING TO THIS MODULE ONLY.

NOTE: STEEL JOISTS @ 24" O.C. TO CENTERLINE OF TOP FLANGE FOR CONNECTION AND WELDING TO THIS MODULE ONLY.

NOTE: STEEL JOISTS @ 48" O.C. TO CENTERLINE OF TOP FLANGE FOR CONNECTION AND WELDING TO THIS MODULE ONLY.

NOTE: STEEL JOISTS @ 24" O.C. TO CENTERLINE OF TOP FLANGE FOR CONNECTION AND WELDING TO THIS MODULE ONLY.

NOTE: STEEL JOISTS @ 48" O.C. TO CENTERLINE OF TOP FLANGE FOR CONNECTION AND WELDING TO THIS MODULE ONLY.

NOTE: STEEL JOISTS @ 24" O.C. TO CENTERLINE OF TOP FLANGE FOR CONNECTION AND WELDING TO THIS MODULE ONLY.

NOTE: STEEL JOISTS @ 48" O.C. TO CENTERLINE OF TOP FLANGE FOR CONNECTION AND WELDING TO THIS MODULE ONLY.

NOTE: STEEL JOISTS @ 24" O.C. TO CENTERLINE OF TOP FLANGE FOR CONNECTION AND WELDING TO THIS MODULE ONLY.

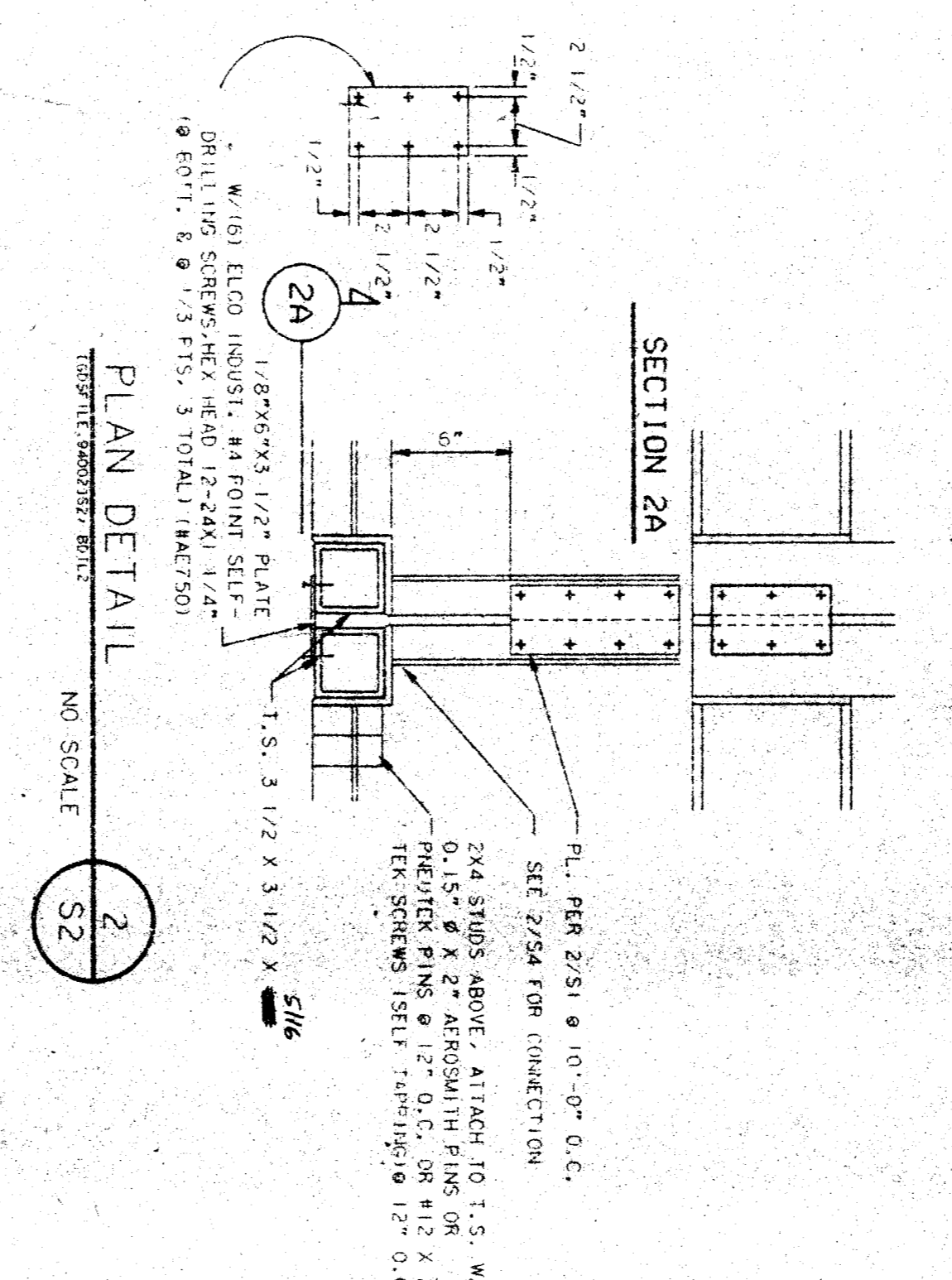
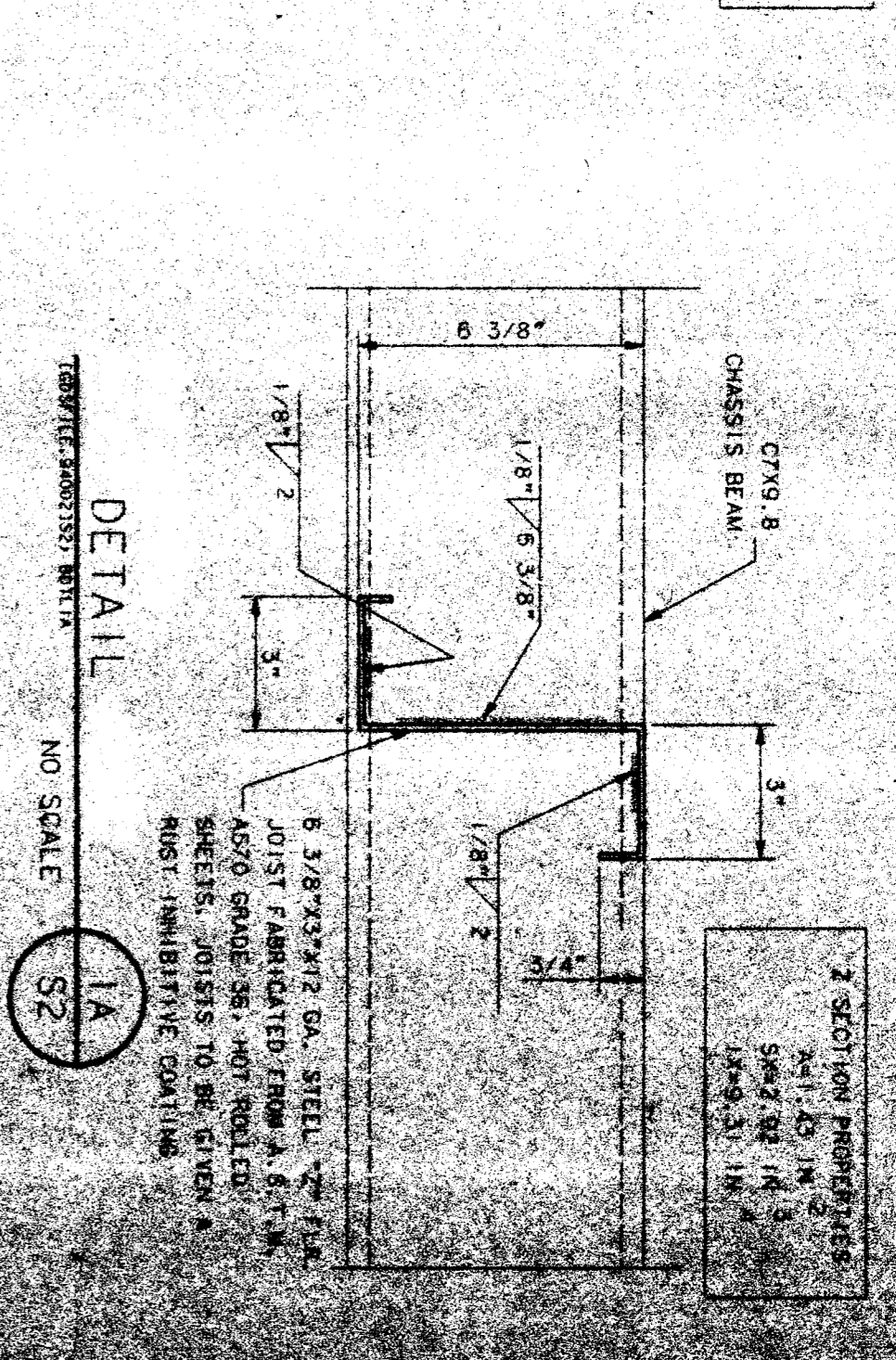
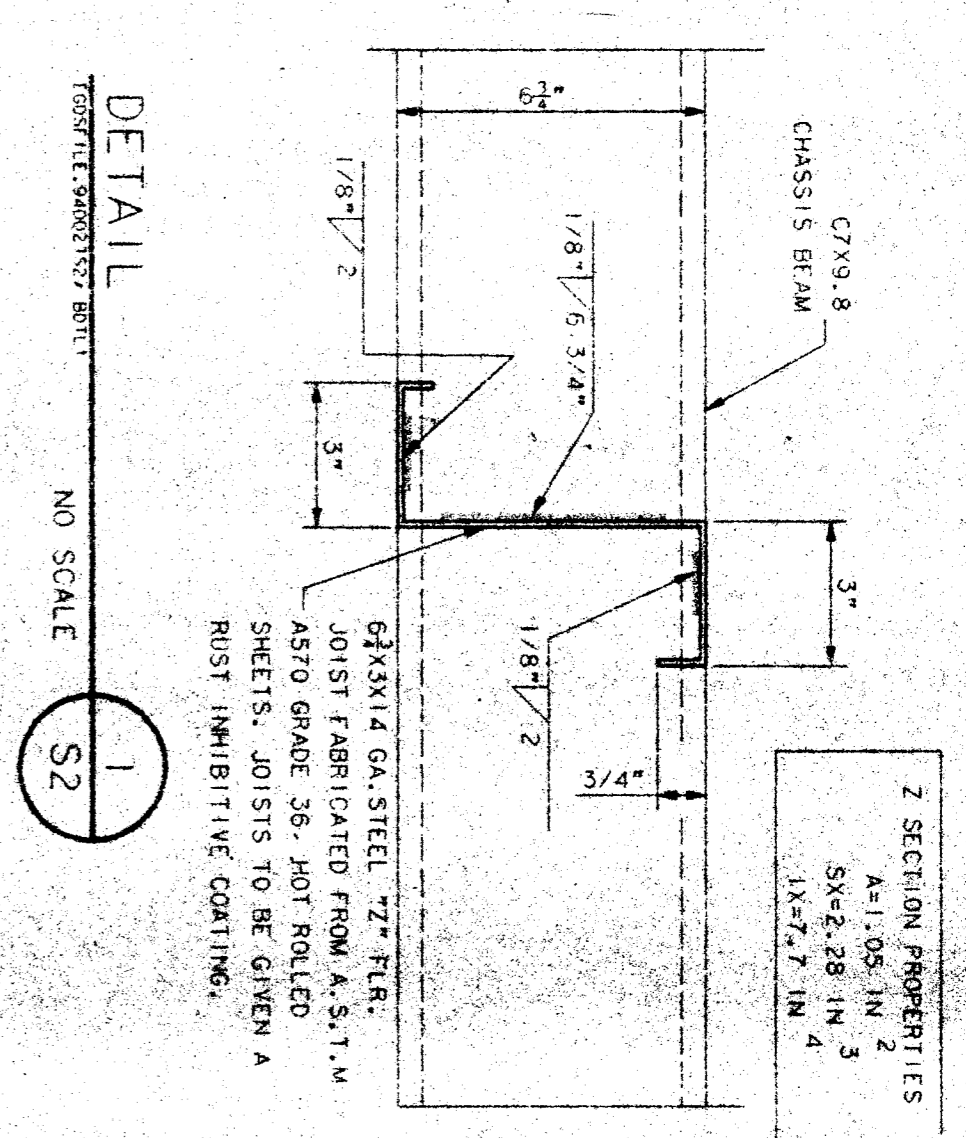
NOTE: STEEL JOISTS @ 48" O.C. TO CENTERLINE OF TOP FLANGE FOR CONNECTION AND WELDING TO THIS MODULE ONLY.

NOTE: STEEL JOISTS @ 24" O.C. TO CENTERLINE OF TOP FLANGE FOR CONNECTION AND WELDING TO THIS MODULE ONLY.

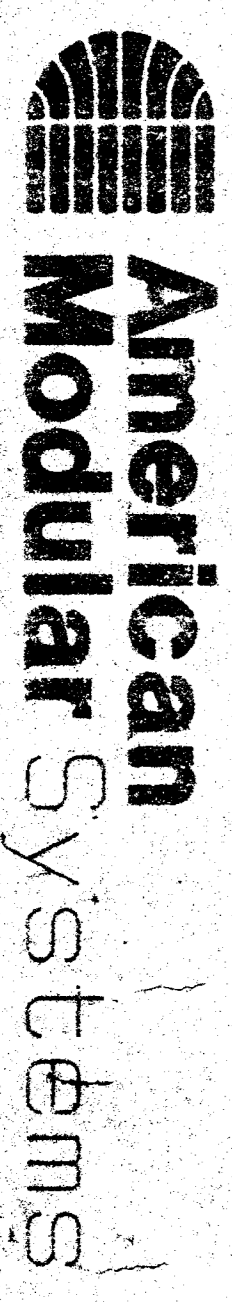
NOTE: STEEL JOISTS @ 48" O.C. TO CENTERLINE OF TOP FLANGE FOR CONNECTION AND WELDING TO THIS MODULE ONLY.

NOTE: STEEL JOISTS @ 24" O.C. TO CENTERLINE OF TOP FLANGE FOR CONNECTION AND WELDING TO THIS MODULE ONLY.

NOTE: STEEL JOISTS @ 48" O.C. TO CENTERLINE OF TOP FLANGE FOR CONNECTION AND WELDING TO THIS MODULE ONLY.



36' X 40'
RELOCATABLE
CLASSROOM



CUSTOMER:
KCCOOC - HEADQUARTERS
VARIOUS SCHOOL SITES
36' X 40' RIGID FRAME

DATE: 7-2-88
SCALE: 1/4" = 1'-0"
DRAWN BY: [Signature]
CHECKED BY: [Signature]
SERIAL NO.:

NO.	DATE	DESCRIPTION	INITIALS	REVISIONS

