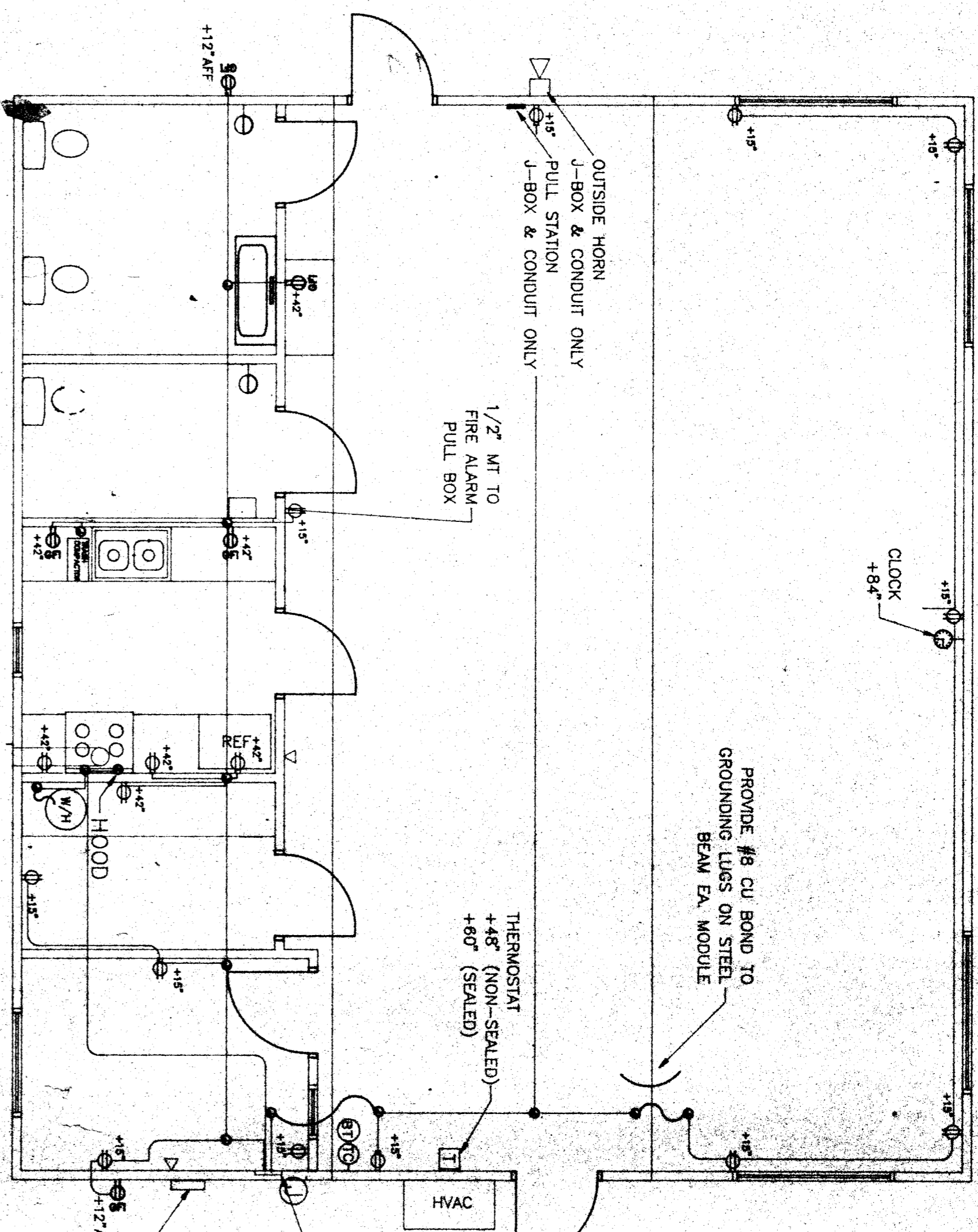
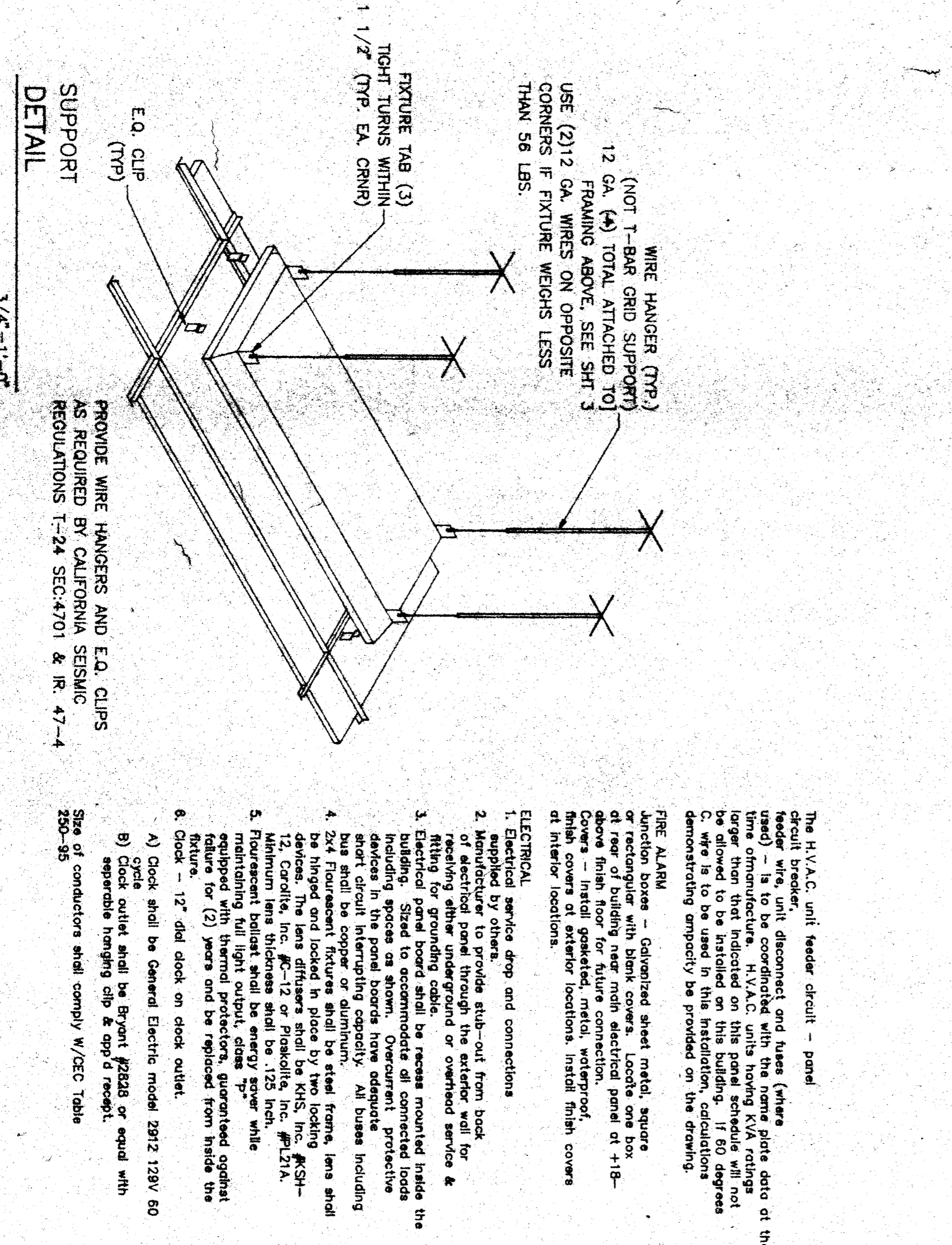


LIGHT FIXTURES  
SCALE: 1/8" = 1'-0"



ELECTRICAL PLAN  
SCALE: 1/8" = 1'-0"

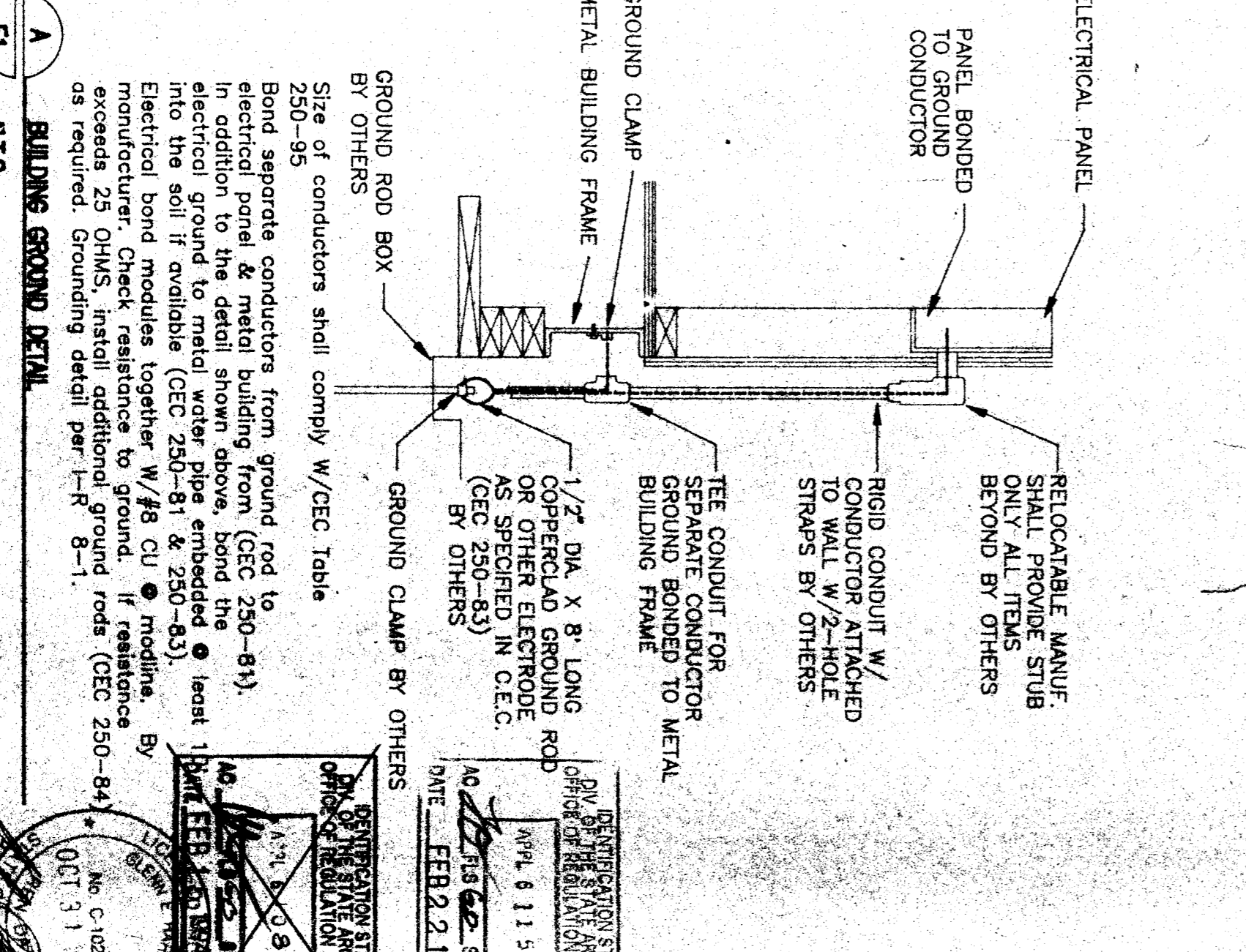


36X40 RELOCATABLE  
HEAD START  
PROVIDE WIRE HANGERS AND E.O. CLIPS  
AS REQUIRED BY CALIFORNIA SEISMIC  
REGULATIONS 17-24 SEC. 4701 & R. 47-4

The N.Y.C. unit feeder detail - panel  
header wire, unit disconnect and lines (where  
used) - 1/2" to be coordinated with the normal  
larger than that indicated on this panel schedule will not  
be shown. If 60 degrees  
demonstrating capacity be provided on the drawing.

**FIRE ALARM**  
Junction boxes - Galvanized sheet metal, square  
or rectangular with lock covers. Locks one box  
above finish floor for future connection. Panel of 1-1/2"  
Cover - Inlaid galvanized metal, waterproof.  
at interior locations for locations, inlaid finish covers  
at exterior locations.

**ELECTRICAL**  
1. Electrical service drop and connections  
2. Applied by others.  
3. Electrical service drop and connections  
4. Electrical service drop and connections  
5. Electrical service drop and connections  
6. Electrical service drop and connections  
7. Electrical service drop and connections  
8. Electrical service drop and connections  
9. Electrical service drop and connections  
10. Electrical service drop and connections



SEE TYPICAL CLASSROOM LAYOUT FOR LOCATIONS OF ALL DEVICES.  
FIXTURE MOUNTING SHALL COMPLY WITH CALIFORNIA SEISMIC REGULATIONS.

SYMBOL	DESCRIPTION	WATTS	LUMENS/FOOTCANDLE
(Symbol)	2'x4' FLUORESCENT DROP IN FIXTURE, ACRYLIC PRISMATIC LENS, ENERGY SAVING BALLAST, (4) 15W WATT TUBES, WT. 27 LBS.	156 W	CR2000/40
(Symbol)	FLUORESCENT SURFACE MOUNTED EXTERIOR LIGHT WITH IMPACT RESISTANT ENCLOSURE, 1/25 THICK GLASS PRISMATIC ONE PIECE LENS W/ MEDPHEN CASNET & POSITIVE STAINLESS STEEL SOLENS.	(2) 7W TT 2700 W	RECALL 3718 LUMENS/FOOTCANDLE 2700
(Symbol)	INCANDESCENT WALL MOUNTED	150W	(TYP) 95/100

**ELECTRICAL PANEL - A**

NO.	DATE	DESCRIPTION	BY	CHKD.
1	1-17-84	REVISIONS	RS	RS
2				
3				
4				
5				
6				
7				
8				
9				
10				

CUSTOMER: RELOCATABLE HEAD START  
HEAD START  
KECCO-HEADSTART PROGRAM

DATE: 1-17-84  
DRAWN BY: RS  
CHECKED BY: RS  
SERIAL NO. 98-1350-001 A-6

AMERICAN Modular Systems