

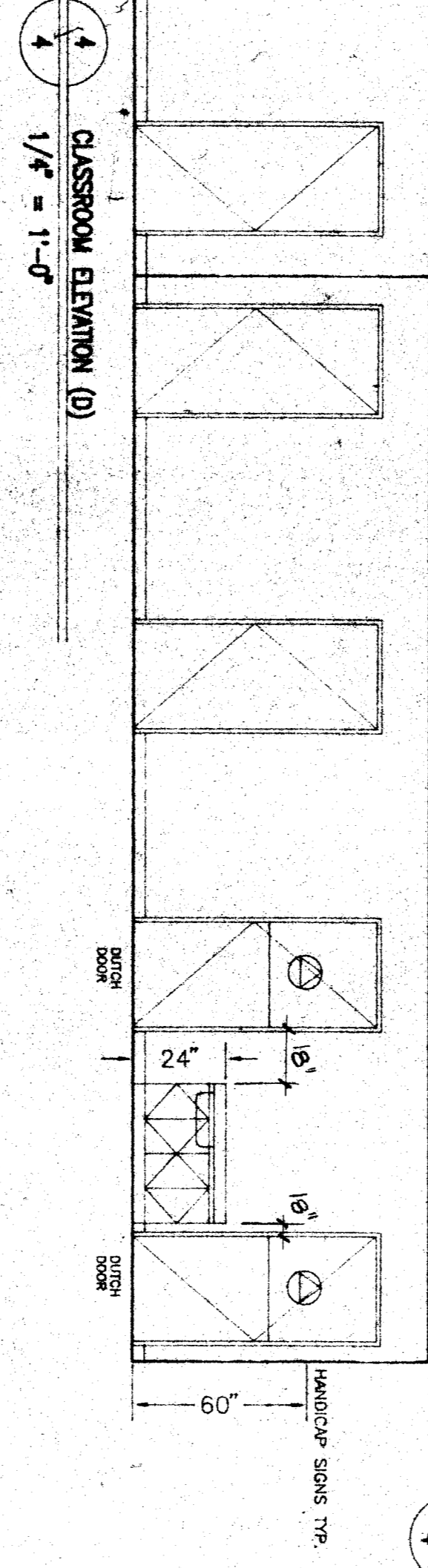
1 CLASSROOM ELEVATION (A)
1/4" = 1'-0"

2 CLASSROOM ELEVATION (B)
1/4" = 1'-0"

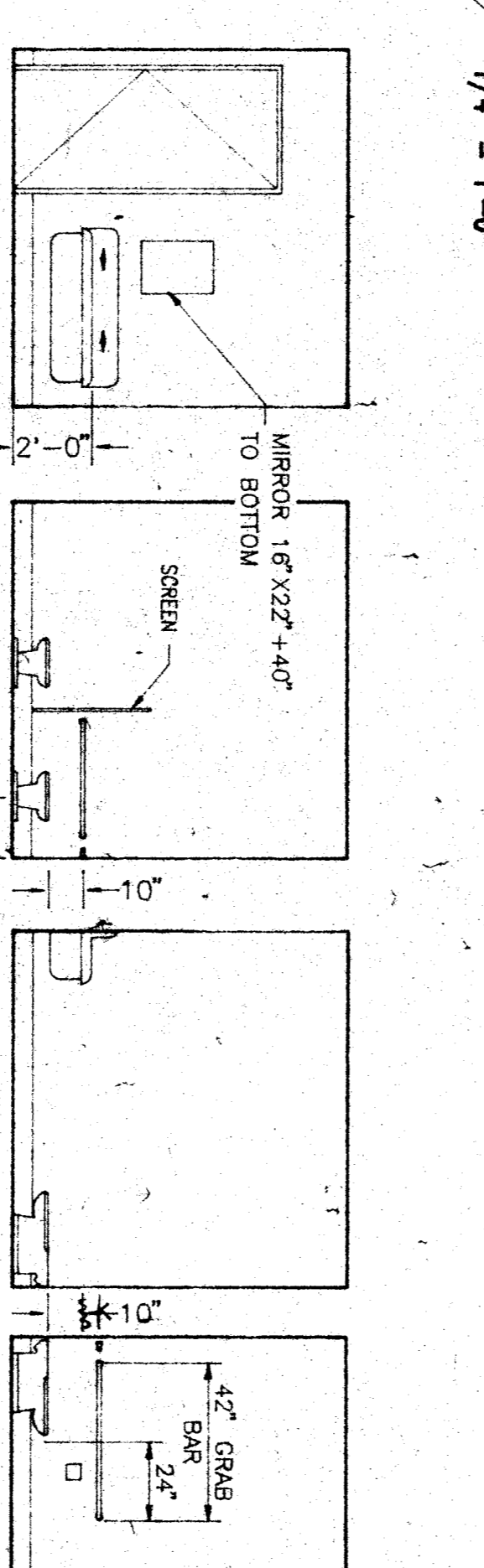
3 CLASSROOM ELEVATION (C)
1/4" = 1'-0"

6 OFFICE
1/4" = 1'-0"

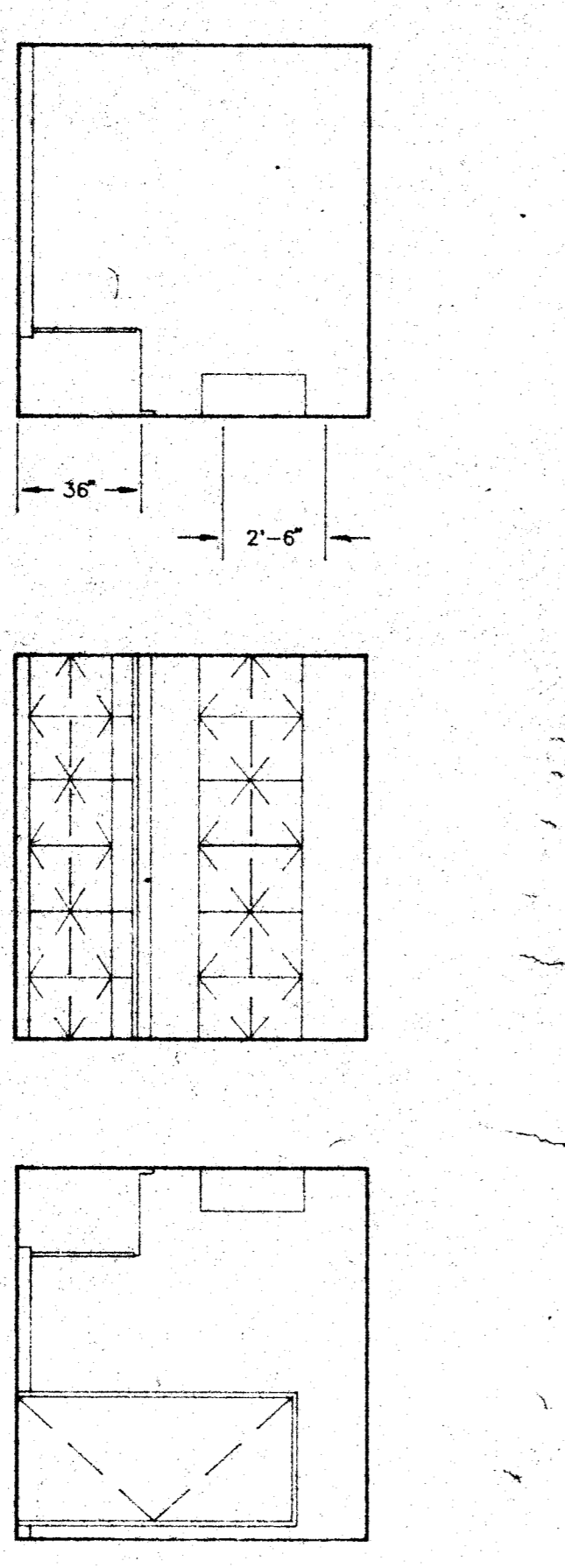
5 STAFF TOILET ROOM
1/4" = 1'-0"



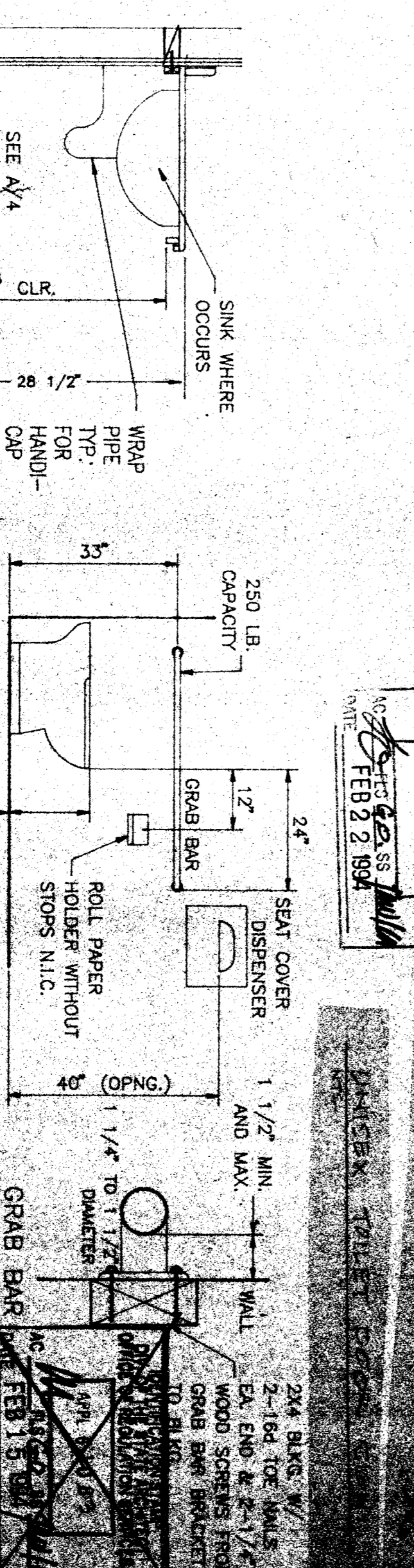
4 CLASSROOM ELEVATION (D)
1/4" = 1'-0"



7 KITCHEN
1/4" = 1'-0"



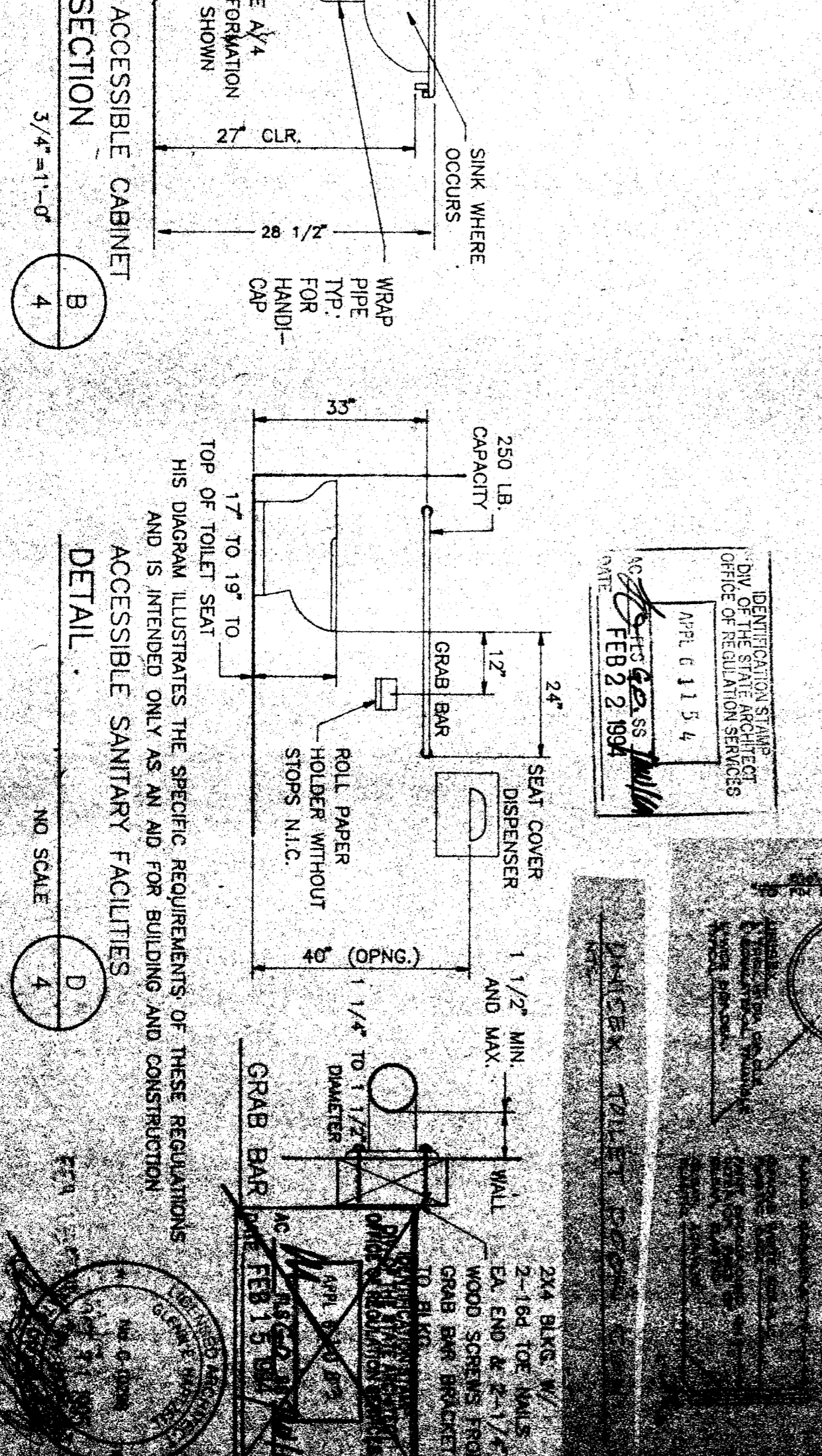
8 STUDENT TOILET ROOM
1/4" = 1'-0"



9 TEACHERS
1/4" = 1'-0"

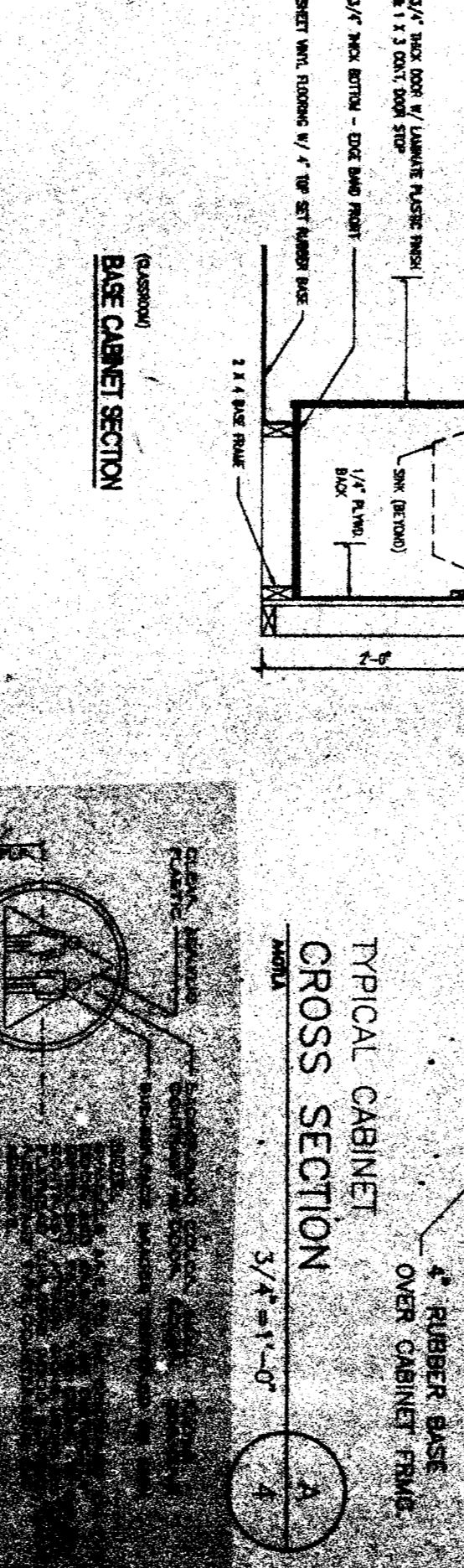
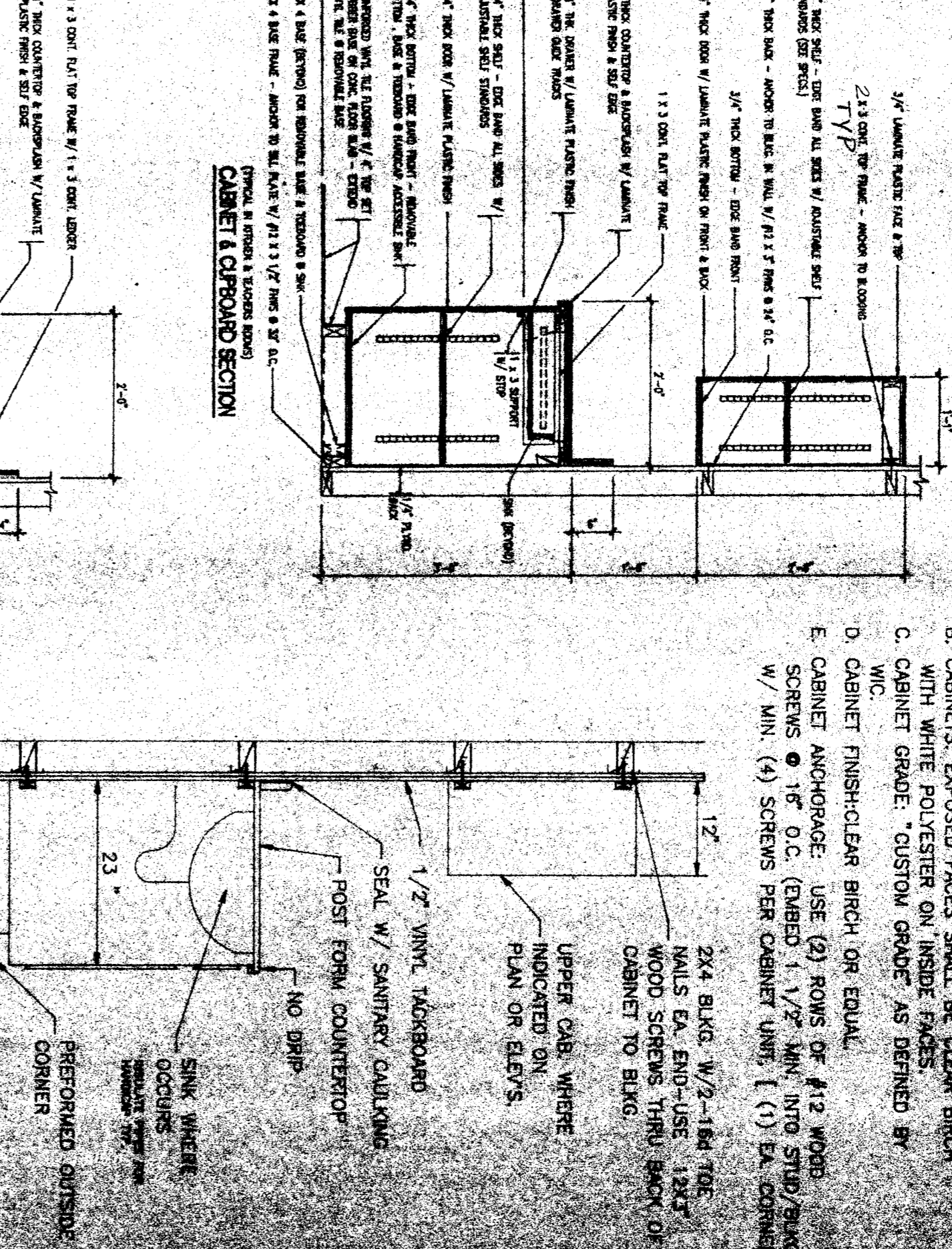
DOOR SCHEDULE										
DOOR NO.	OPENING SIZE	DOOR TYPE	THK.	MAT'L	FRAME MAT'L	DETAILS				REMARKS
						HEAD	JAMB	THRESHOLD	HARDWARE	
A	3'-0" x 7'-0"	A	1 1/2"	HAM	HAM	N/A	N/A	1		
B	3'-0" x 7'-0"	B	1 1/2"	S.C.	HAM	N/A	N/A	2		
C	3'-0" x 7'-0"	C	1 1/2"	S.C.	HAM	N/A	N/A	3		
D	3'-0" x 7'-0"	D	1 1/2"	S.C.	HAM	N/A	N/A	4		

FINISH SCHEDULE										
ROOM NO.	ROOM NAME	FLOOR	BASE	WALLS				CEILING	CLG. HT.	REMARKS
				NORTH	EAST	SOUTH	WEST			
01	CLASSROOM	F2	BI	WI	WI	WI	CI	N/A	8'-6"	
02	OFFICE	F2	BI	WI	WI	WI	CI	N/A	8'-6"	
03	TEACHERS	F2	BI	WI	WI	WI	CI	N/A	8'-6"	
04	KITCHEN	F2	BI	WI	WI	WI	CI	N/A	8'-6"	
05	H/C BATH	F2	BI	WI	WI	WI	CI	N/A	8'-6"	
06	STUDENT BATH	F2	BI	WI	WI	WI	CI	N/A	8'-6"	



NOTE: USE SLEEVE OR WASHER THRU WALL FINISH MAT'L TYPE @ CABINETS AND GRAB BARS

- CABINETS & MILLWORK
- MATERIAL & FABRICATION STANDARDS:
 - WIC STANDARDS: WORK SHALL CONFORM TO (WIC) WOODWORK INSTITUTE OF CALIFORNIA, APRIL 1988 EDITION, SECTION 14 - WOOD CASERWORK.
 - GENERAL MATERIAL & FABRICATION REQUIREMENTS:
 - COUNTER TOPS: PLASTIC LAMINATE OVERLAP ON PARTICLE BOARD. * BACKSPASH.
 - NO DRIP EDGE. SEE PLANS FOR BACK SPLASH AREA.
 - CABINETS: EXPOSED FACES SHALL BE CLEAR BIRCH WITH WHITE POLYESTER ON INSIDE FACES.
 - CABINET GRADE: CUSTOM GRADE AS DEFINED BY WIC.
 - CABINET FINISH: CLEAR BIRCH OR EQUAL.
 - CABINET ANCHORAGE: USE (2) ROWS OF #12 WOOD SCREWS @ 16" O.C. (EMBED 1 1/2" MIN. INTO STUD/PLANK W/ MIN. (4) SCREWS PER CABINET UNIT. (1) EA. CORNER.



HANDICAP ACCESSIBLE CABINET CROSS SECTION

NO SCALE

THIS DIAGRAM ILLUSTRATES THE SPECIFIC REQUIREMENTS OF THESE REGULATIONS AND IS INTENDED ONLY AS AN AID FOR BUILDING AND CONSTRUCTION ACCESSIBLE SANITARY FACILITIES.

DATE: 1-18-84
SCALE: NONE
DRAWN BY: NS
CHECKED BY: NS
SERIAL NO.: NS-8150-001-AS-C

REVISIONS

NO.	DATE	DESCRIPTION

PRODUCED BY: [Logo]

36 X 40 RELOCATABLE HEAD START

American Modular Systems